

OPERATOR: **Extraction Oil & Gas**

WELL NAME: **Kiteley 8**

FIELD NAME: DJ Basin - Wattenberg

DRILLING RIG: Cyclone 37

API #: 05-123-43924

LAT/LONG: 40.207796, -105.015078

SURFACE HOLE: NWSW S21-T3N-R68W, 1389' FSL, 622' FWL

BOTTOM HOLE: S21-T3N-R68W, 750' FSL, 460' FEL

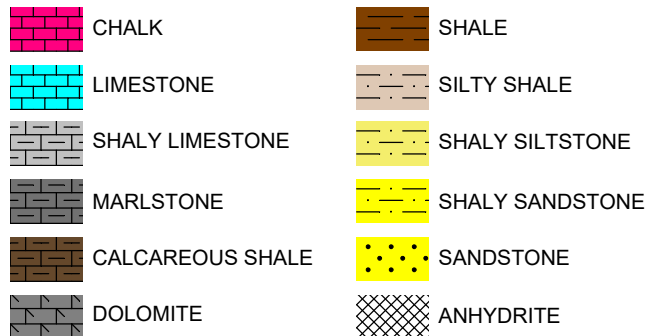


Earth Science Agency, LLC

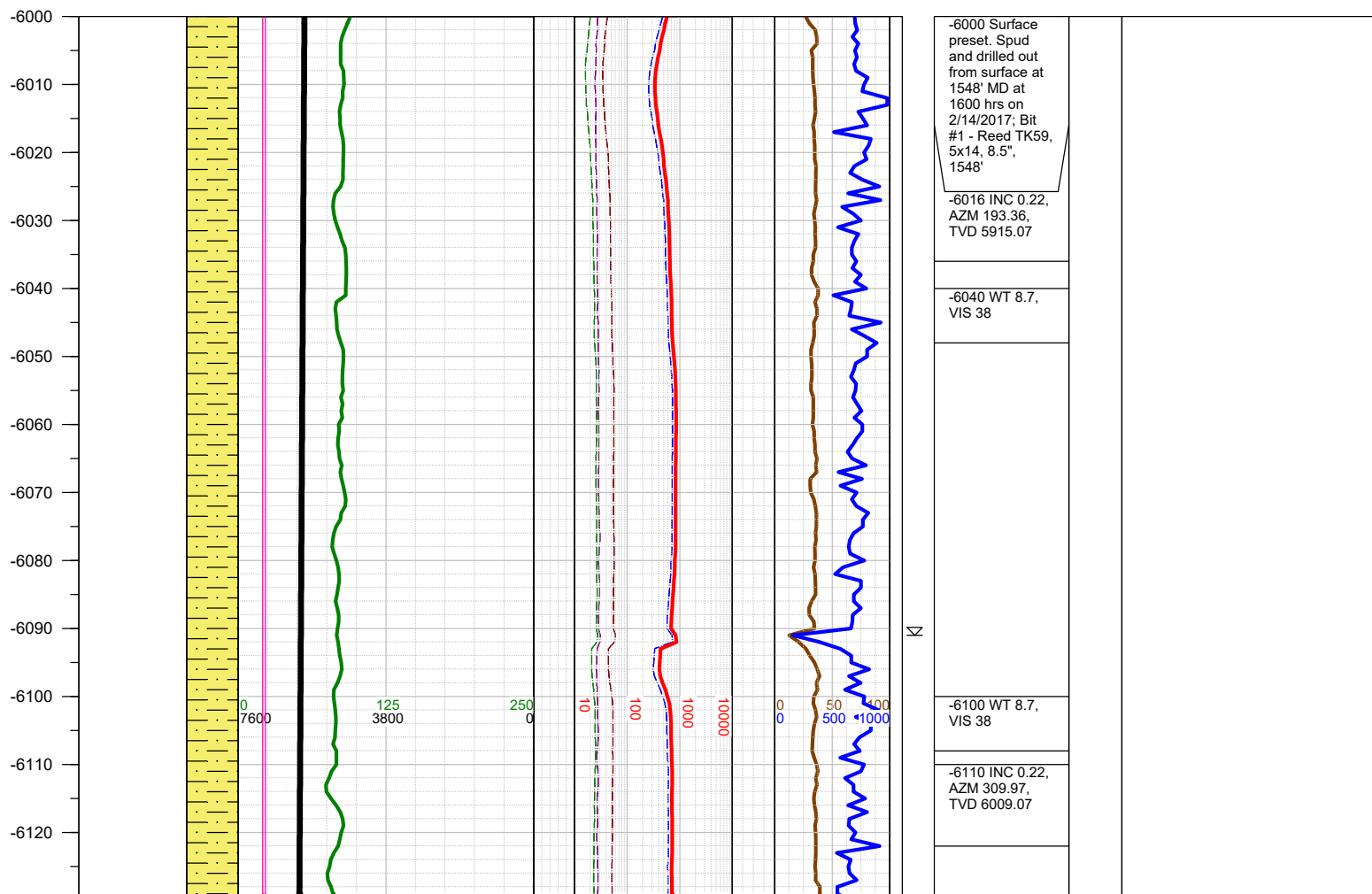
COUNTY: Weld
STATE: Colorado
GROUND ELEVATION: 4988'
KELLY BUSHING: 5016'
DRILLING FLUID: OBM
TVD VS. MD: 7098' / 11580'
SPUD DATE: February 14, 2017
TD DATE: February 16, 2017

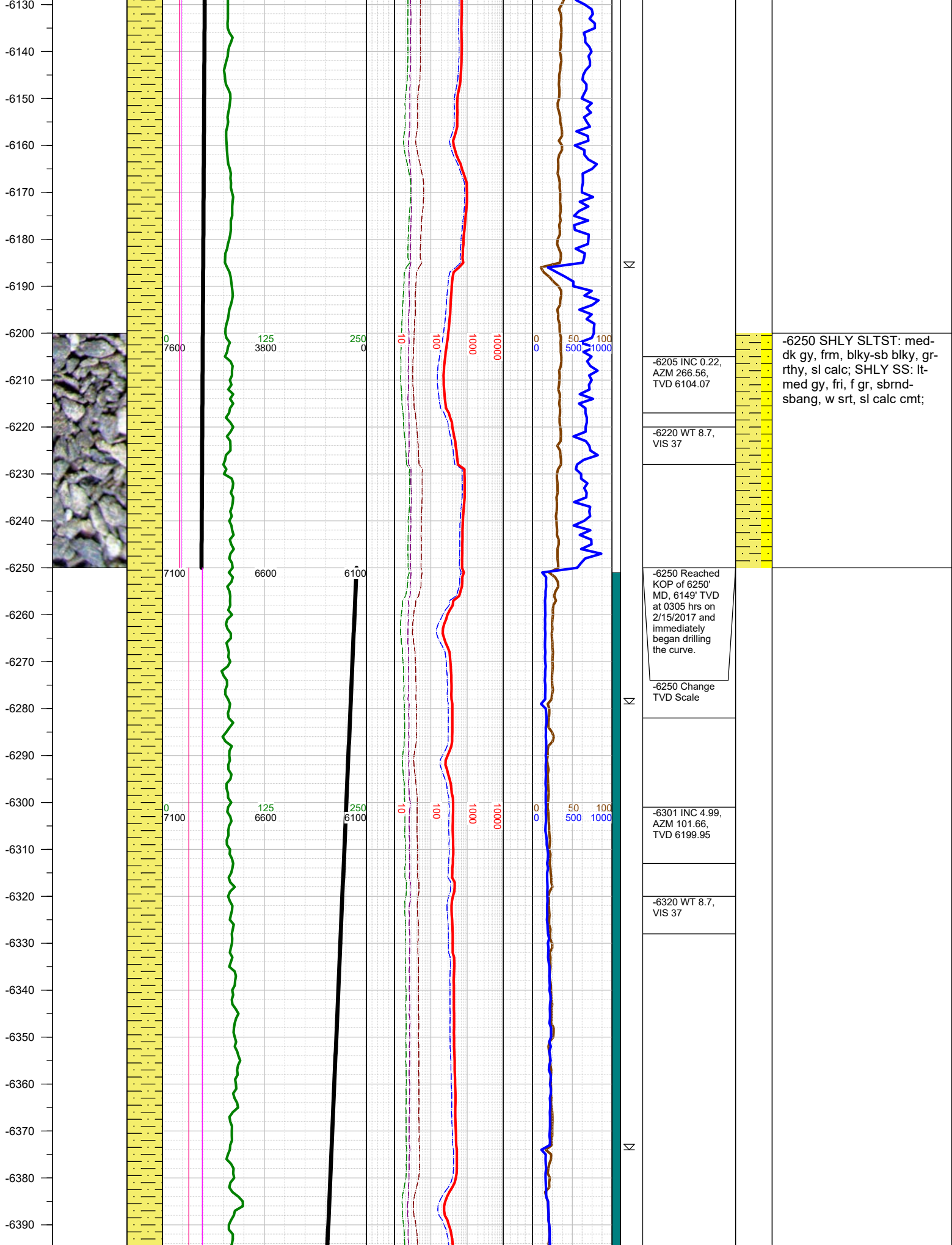
DEPTHS LOGGED: 6000' - 11580'
DATES LOGGED: February 14, 2017 - February 16, 2017
GEOLOGISTS: Curtis Magnino, Nick Watkins
SCALE: 5" = 100'

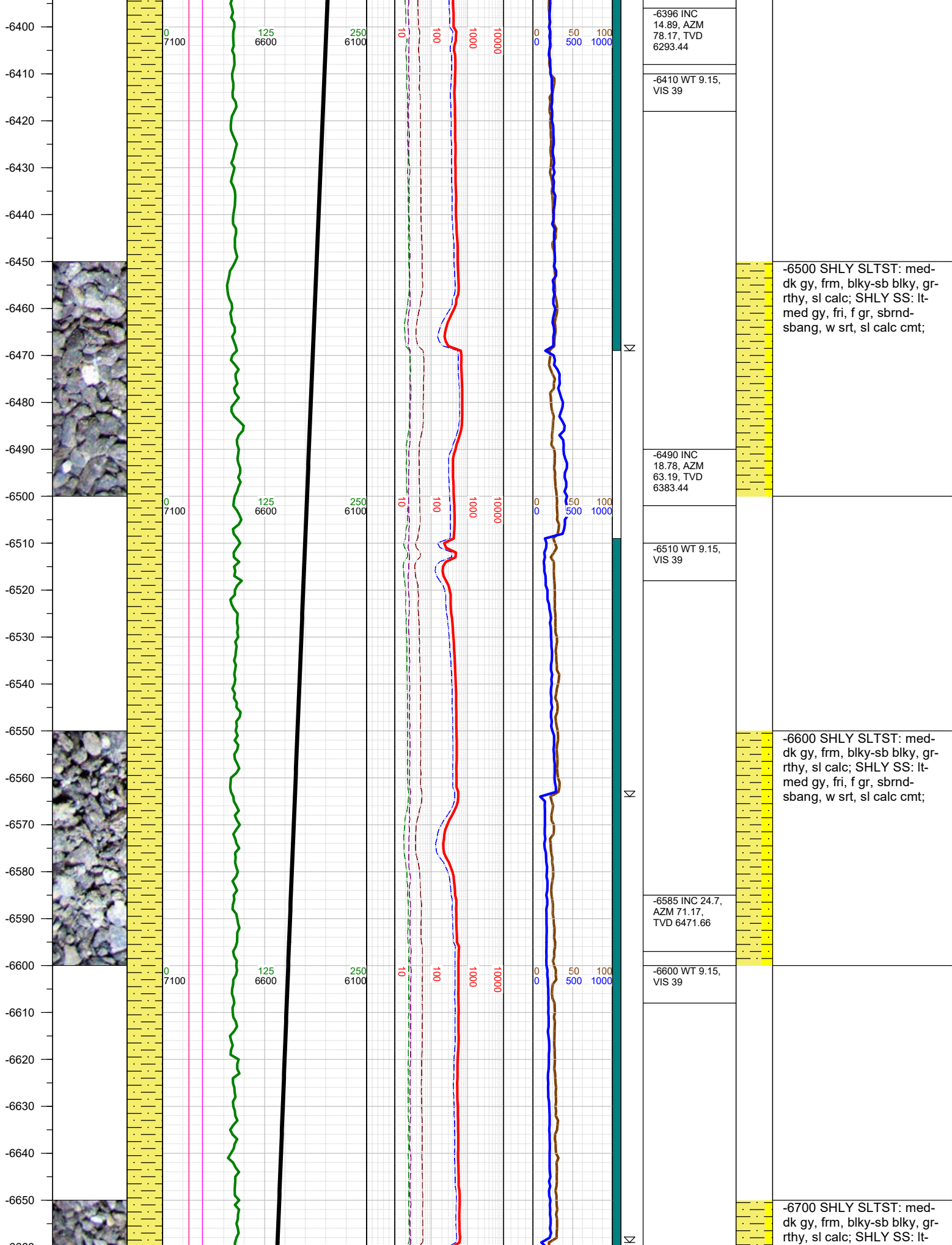
LEGEND

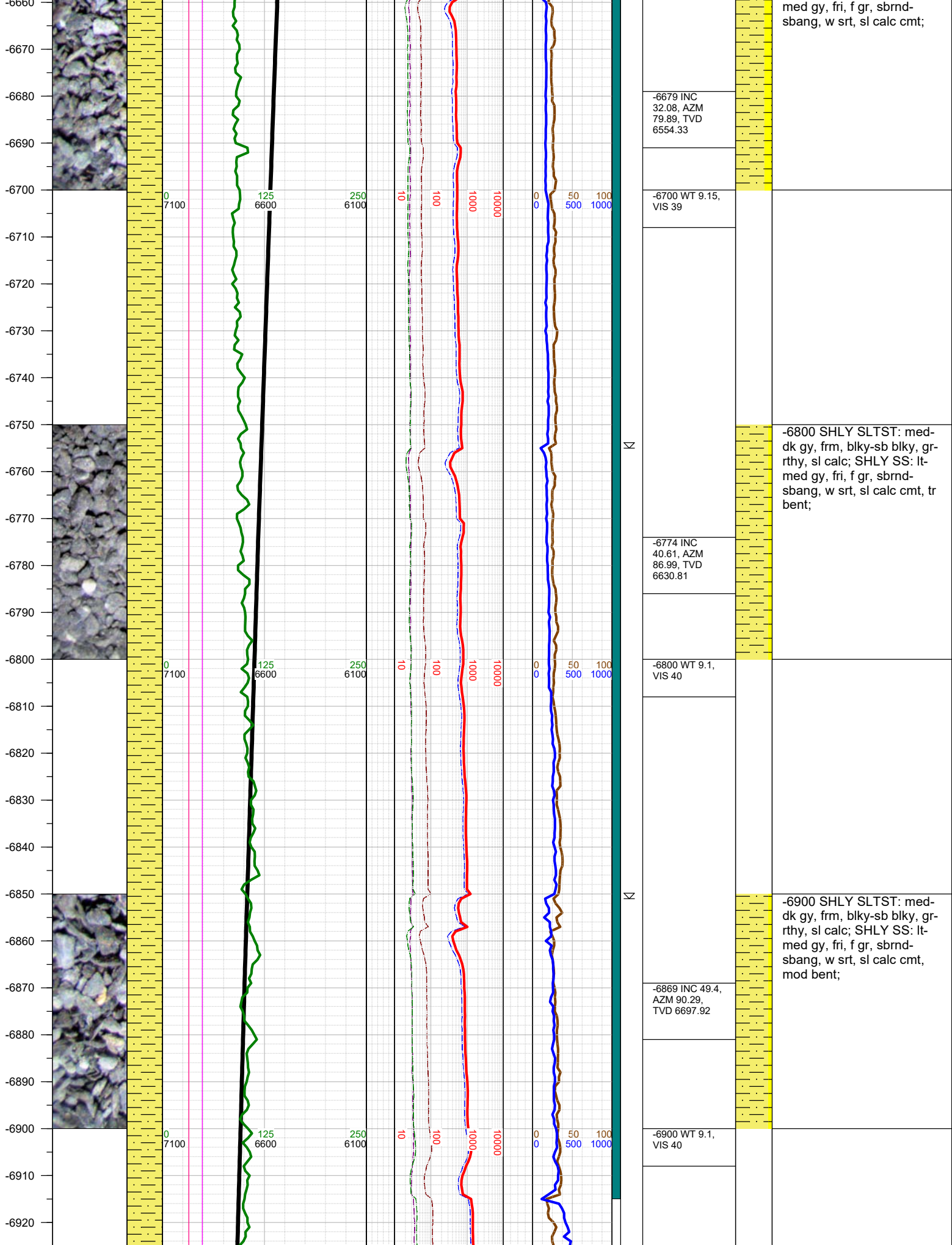


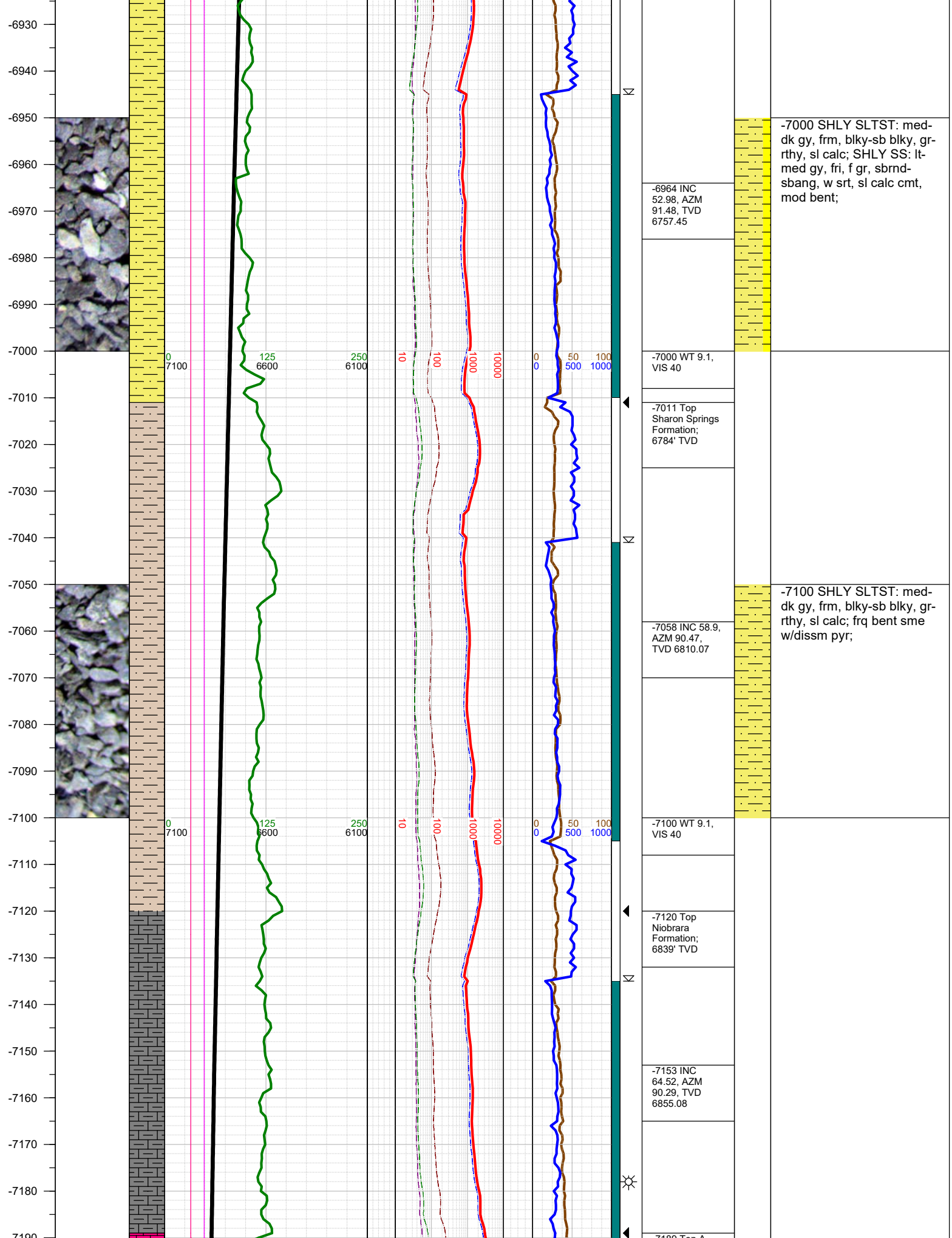
FORMATION \approx CONNECTION Δ MIDNIGHT NEW BIT GAS SHOW FAULT

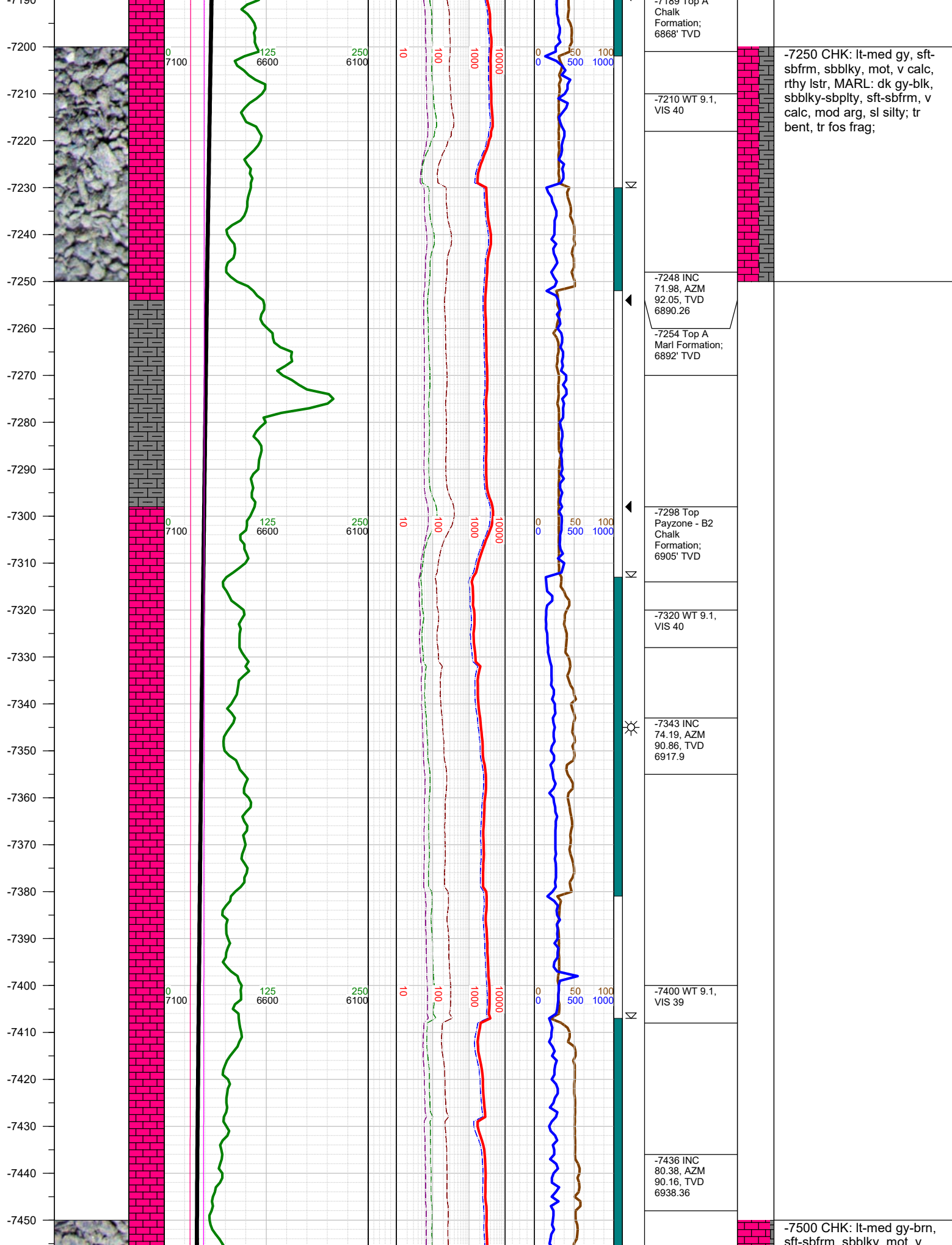


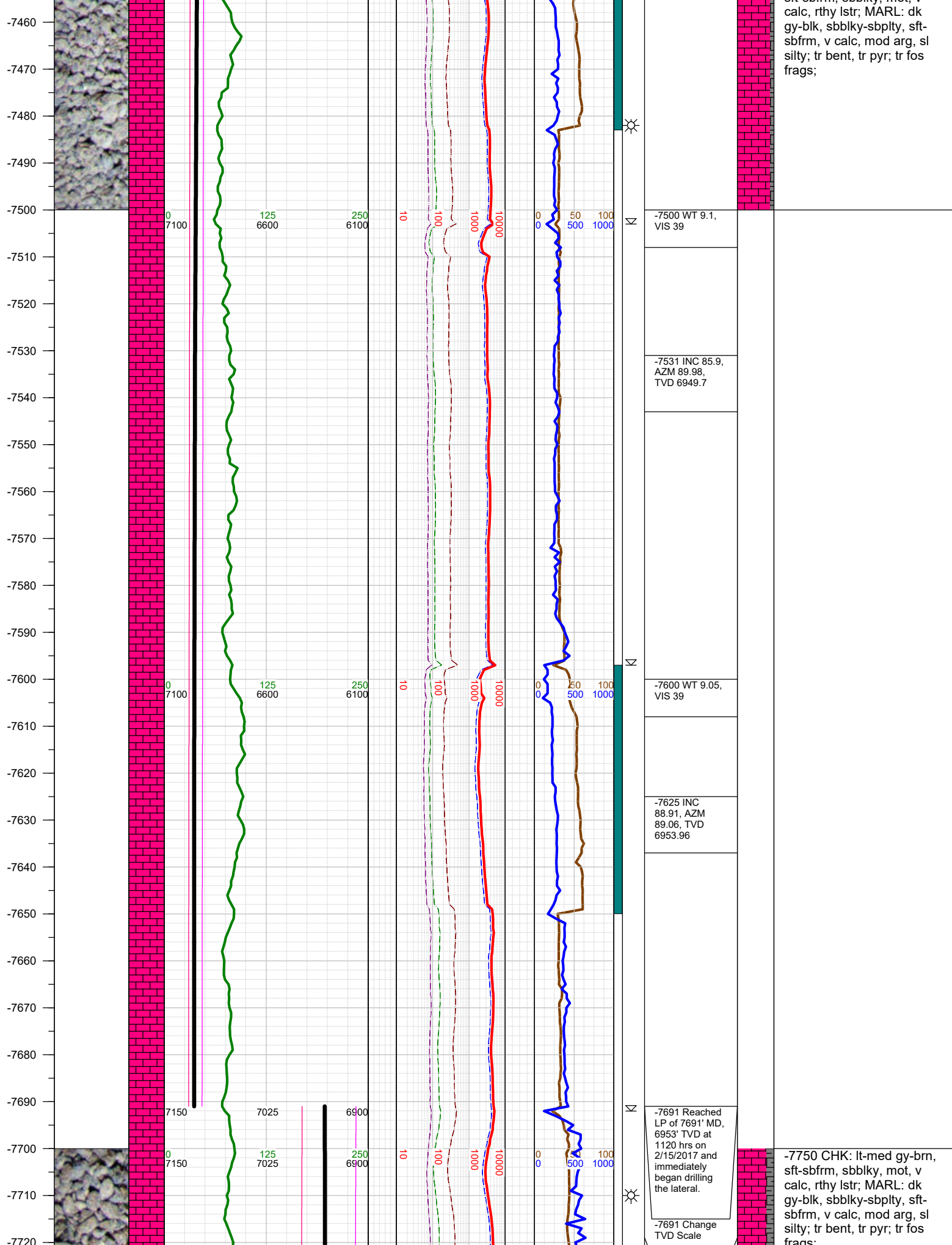


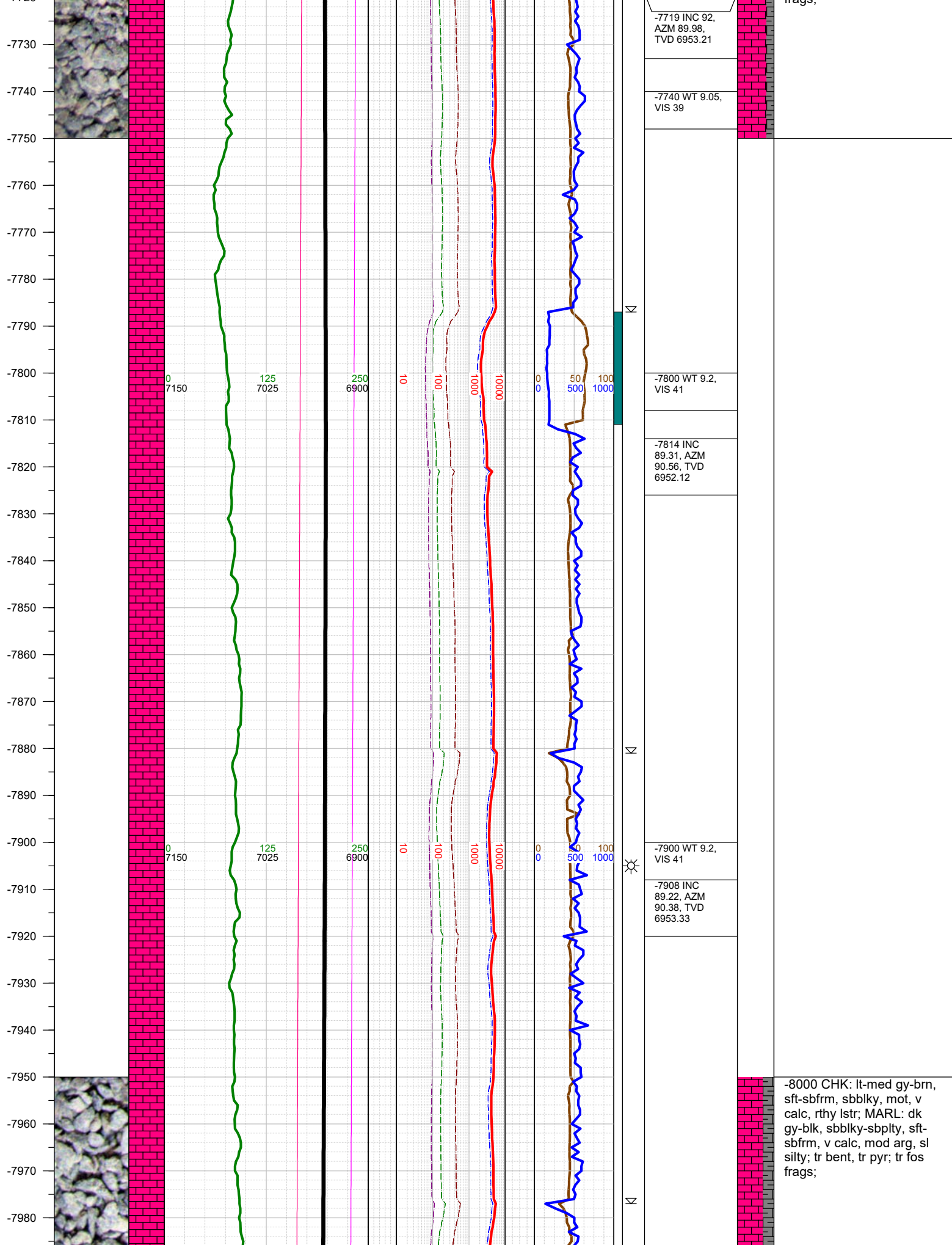




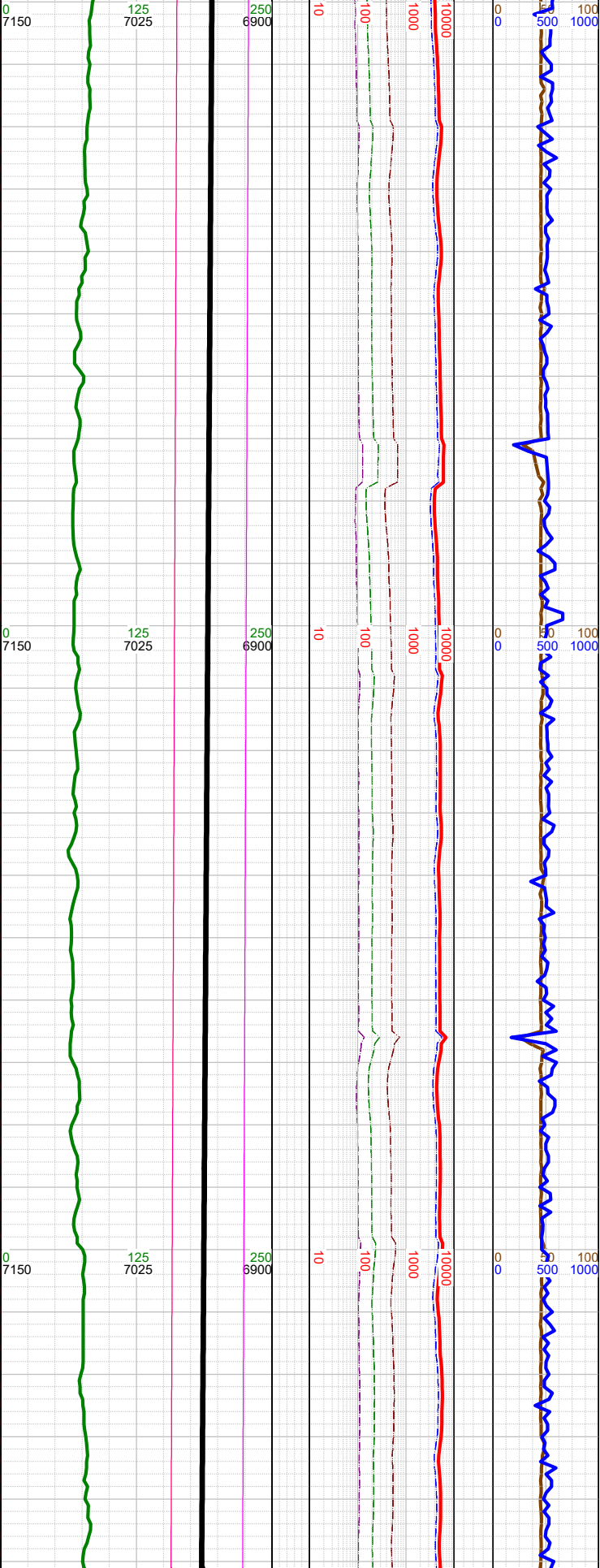
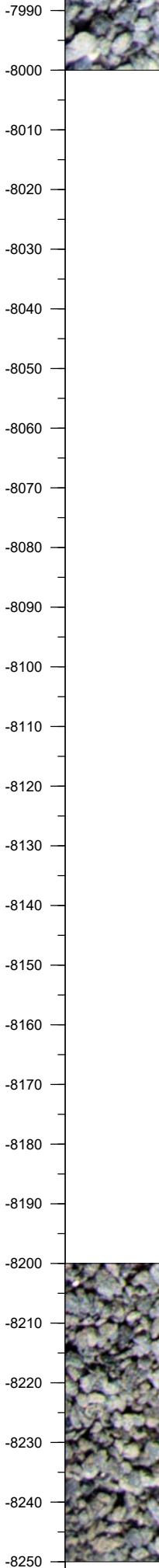








-8000 CHK: lt-med gy-brn, sft-sbfrm, sbblky, mot, v calc, rthy lstr; MARL: dk gy-blk, sbblky-sbplty, sft-sbfrm, v calc, mod arg, sl silty; tr bent, tr pyr; tr fos frags;



⌵

⌵

-8003 INC
87.89, AZM
90.38, TVD
6955.73

-8020 WT 9.2,
VIS 41

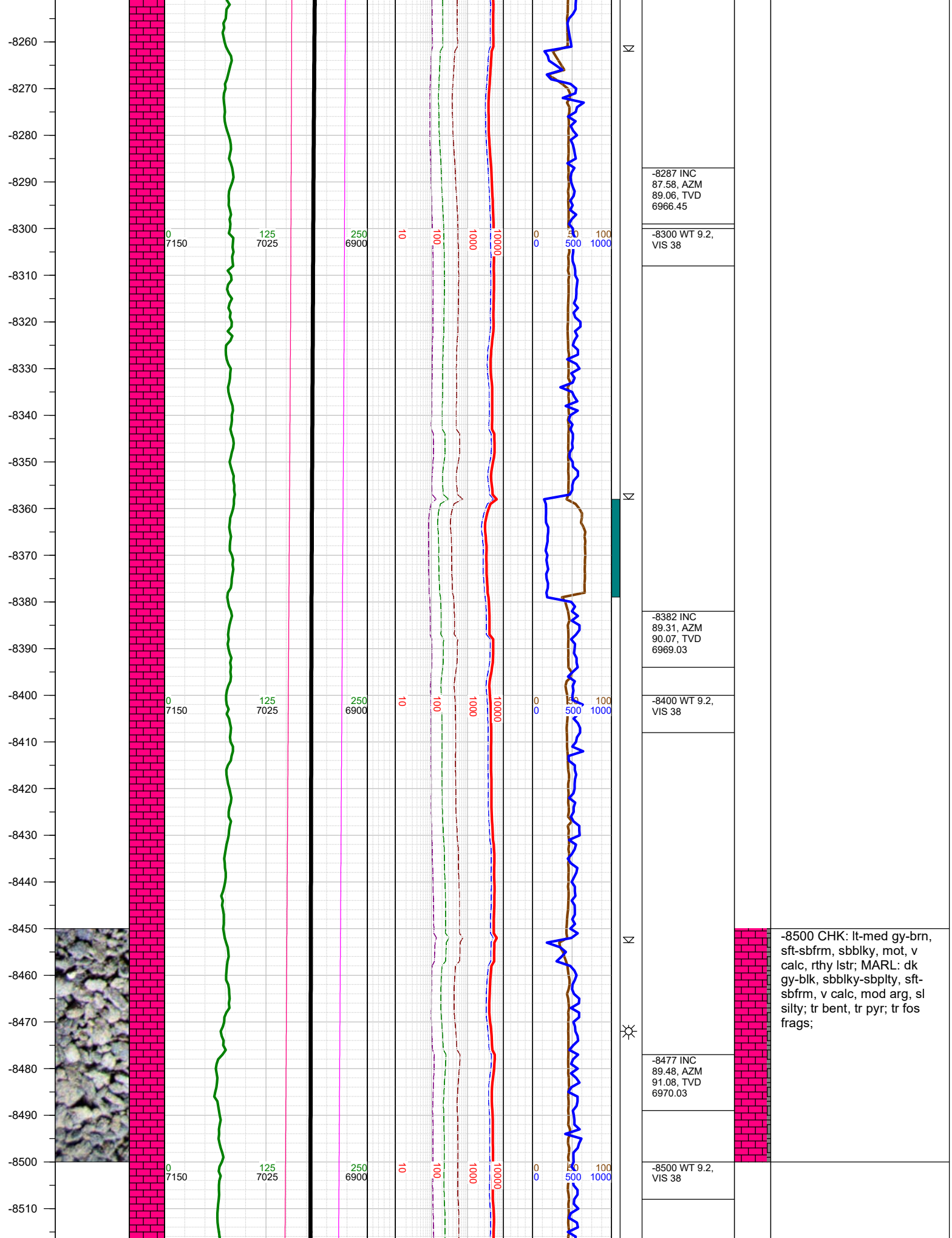
-8098 INC
87.89, AZM
90.07, TVD
6959.23

-8110 WT 9.2,
VIS 41

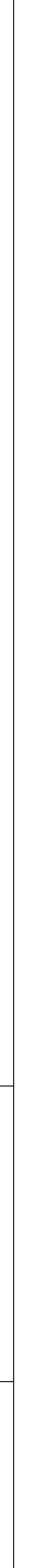
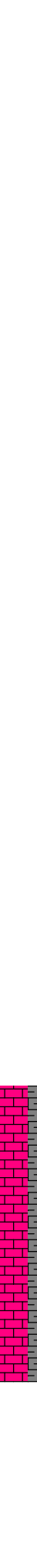
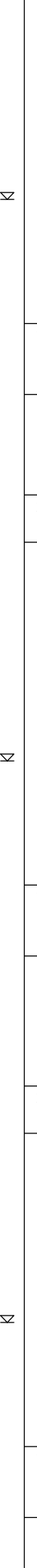
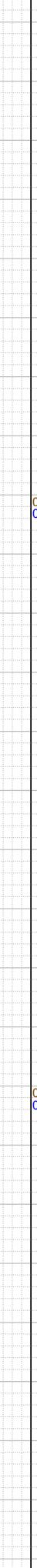
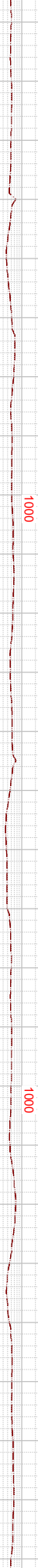
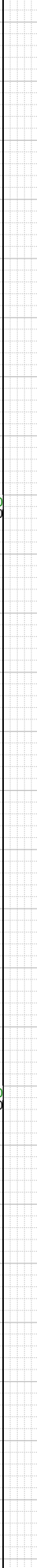
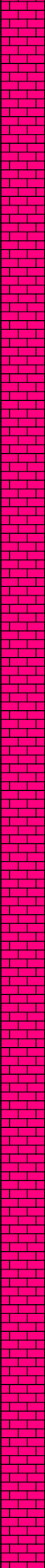
-8193 INC
87.89, AZM
90.38, TVD
6962.73

-8210 WT 9.2,
VIS 41

-8250 CHK: lt-med gy-brn,
sft-sbfrm, sbblky, mot, v
calc, rthy lstr; MARL: dk
gy-blk, sbblky-sbplty, sft-
sbfrm, v calc, mod arg, sl
silty; tr bent, tr pyr; tr fos
frags;



-8520
-8530
-8540
-8550
-8560
-8570
-8580
-8590
-8600
-8610
-8620
-8630
-8640
-8650
-8660
-8670
-8680
-8690
-8700
-8710
-8720
-8730
-8740
-8750
-8760
-8770
-8780



Δ

Δ

Δ

-8571 INC
89.79, AZM
90.16, TVD
6970.63

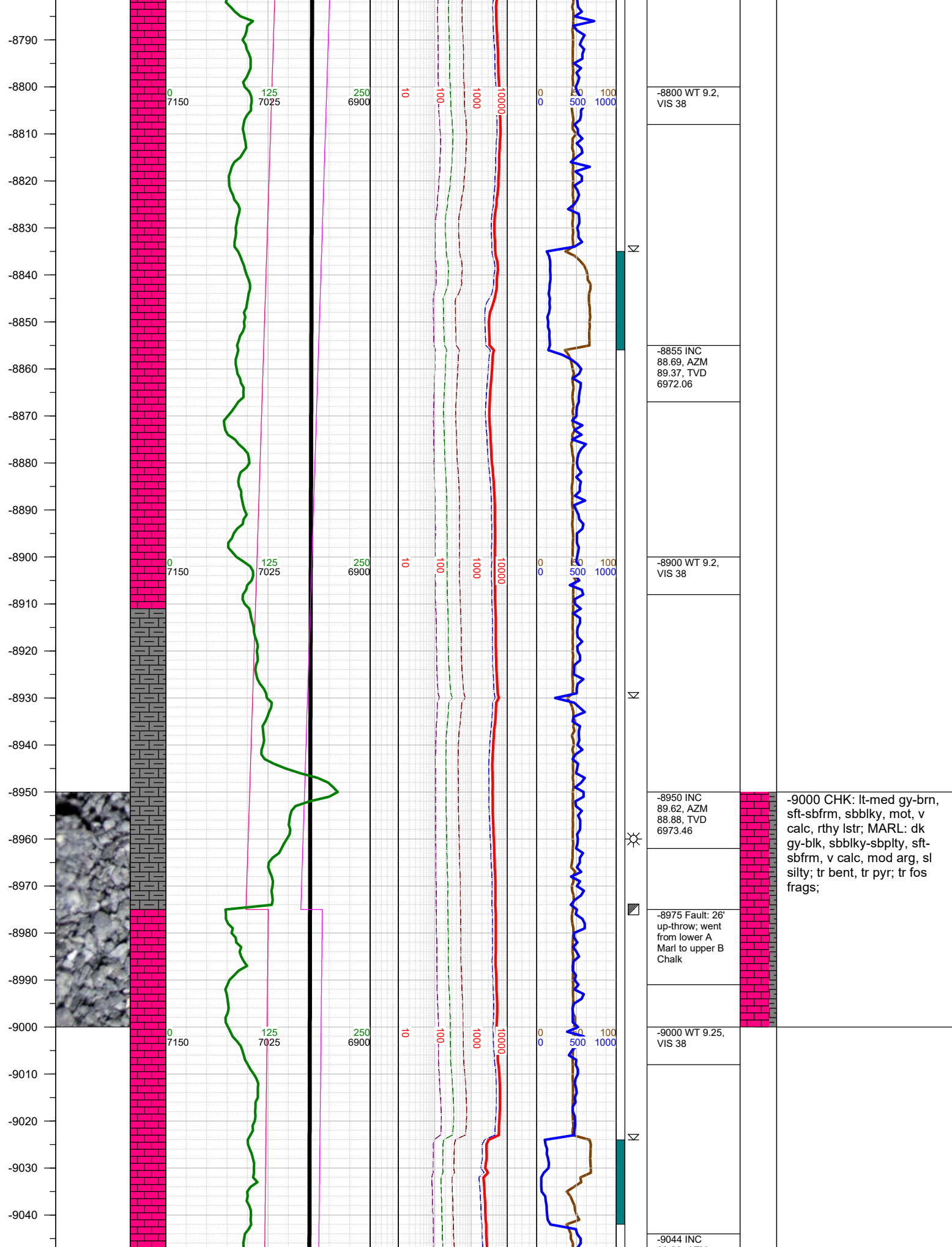
-8600 WT 9.2,
VIS 38

-8666 INC
89.88, AZM
90.47, TVD
6970.9

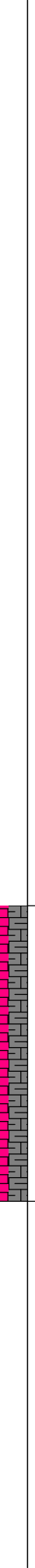
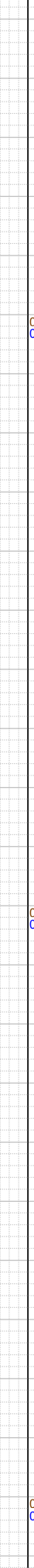
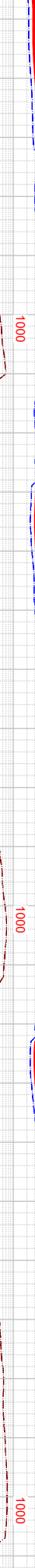
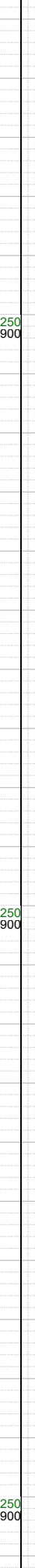
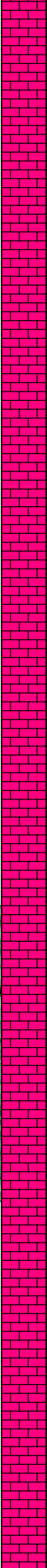
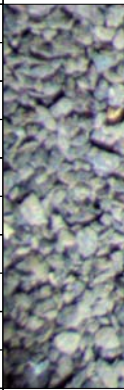
-8700 WT 9.2,
VIS 38

-8761 INC
90.01, AZM
90.56, TVD
6970.99

-8750 CHK: lt-med gy-brn,
sft-sbfrm, sbblky, mot, v
calc, rthy lstr; MARL: dk
gy-blk, sbblky-sbplty, sft-
sbfrm, v calc, mod arg, sl
silty; tr bent, tr pyr; tr fos
frags;



-9050
-9060
-9070
-9080
-9090
-9100
-9110
-9120
-9130
-9140
-9150
-9160
-9170
-9180
-9190
-9200
-9210
-9220
-9230
-9240
-9250
-9260
-9270
-9280
-9290
-9300
-9310



89.22, AZM
89.28, TVD
6974.41

-9100 WT 9.3,
VIS 40

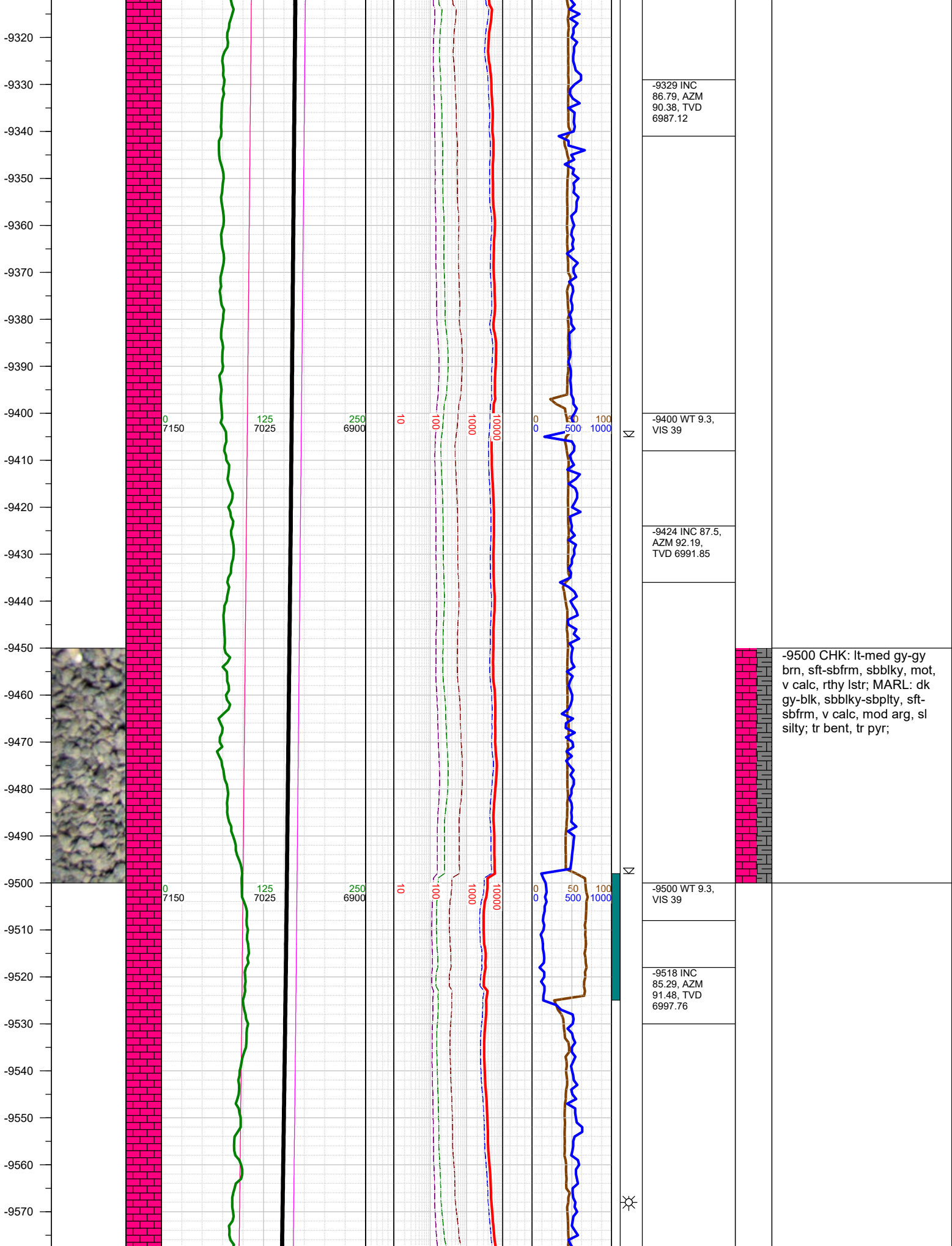
-9139 INC
87.32, AZM
90.86, TVD
6977.28

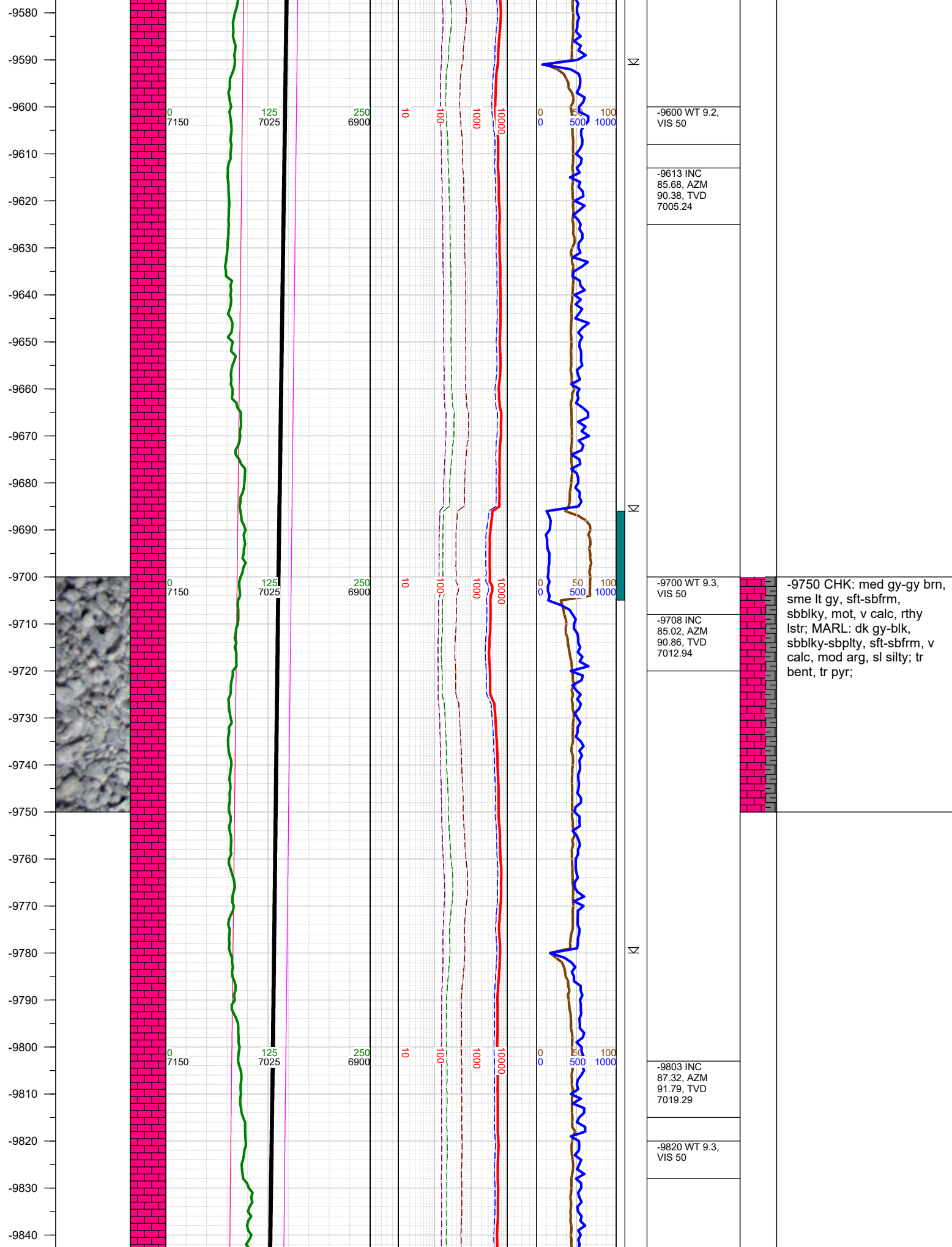
-9200 WT 9.3,
VIS 40

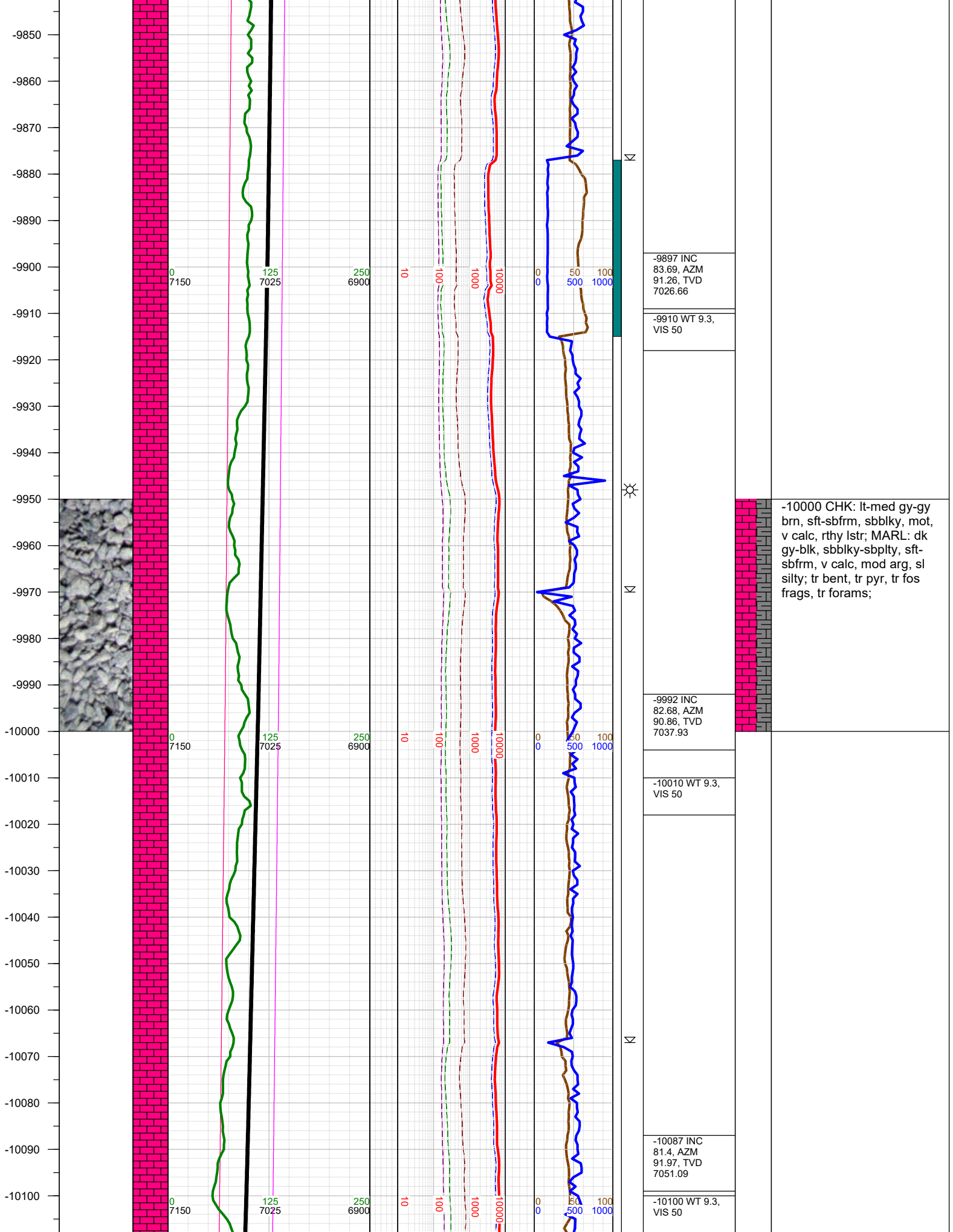
-9234 INC
87.01, AZM
90.16, TVD
6981.98

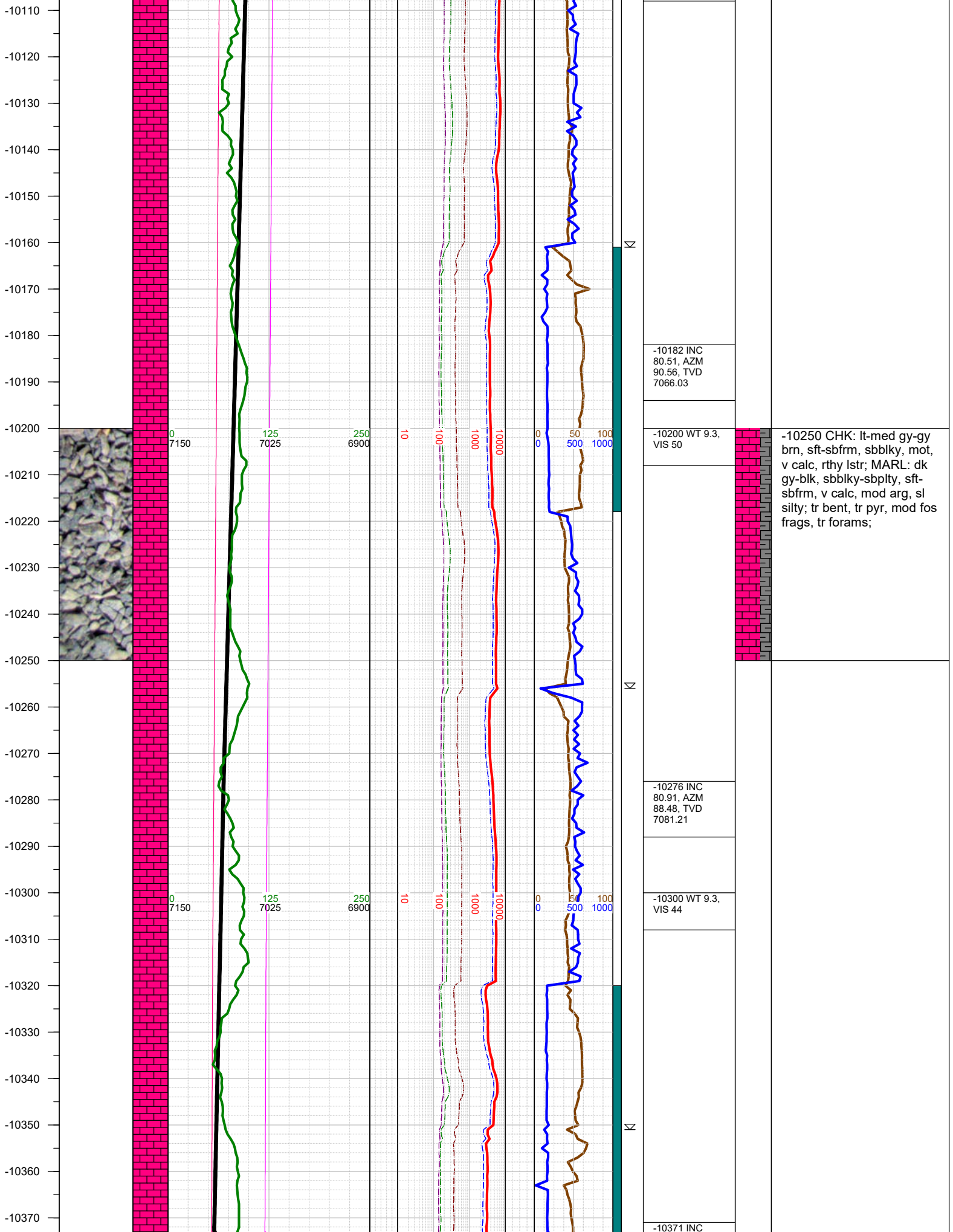
-9300 WT 9.3,
VIS 39

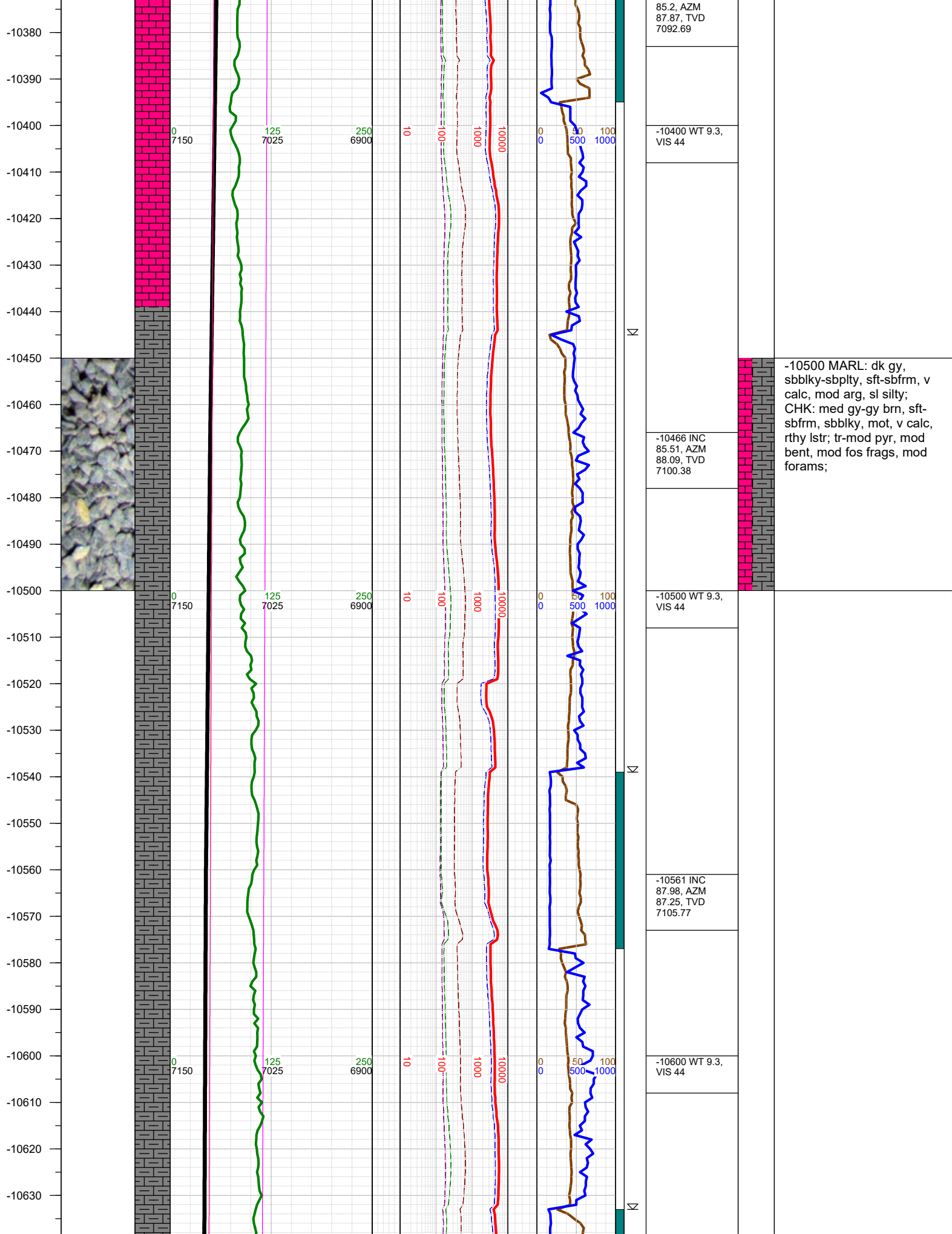
-9250 CHK: lt-med gy-gy
brn, sft-sbfrm, sbblky, mot,
v calc, rthy lstr; MARL: dk
gy-blk, sbblky-sbplty, sft-
sbfrm, v calc, mod arg, sl
silty; tr bent, tr pyr, tr fos
frags mod forams;

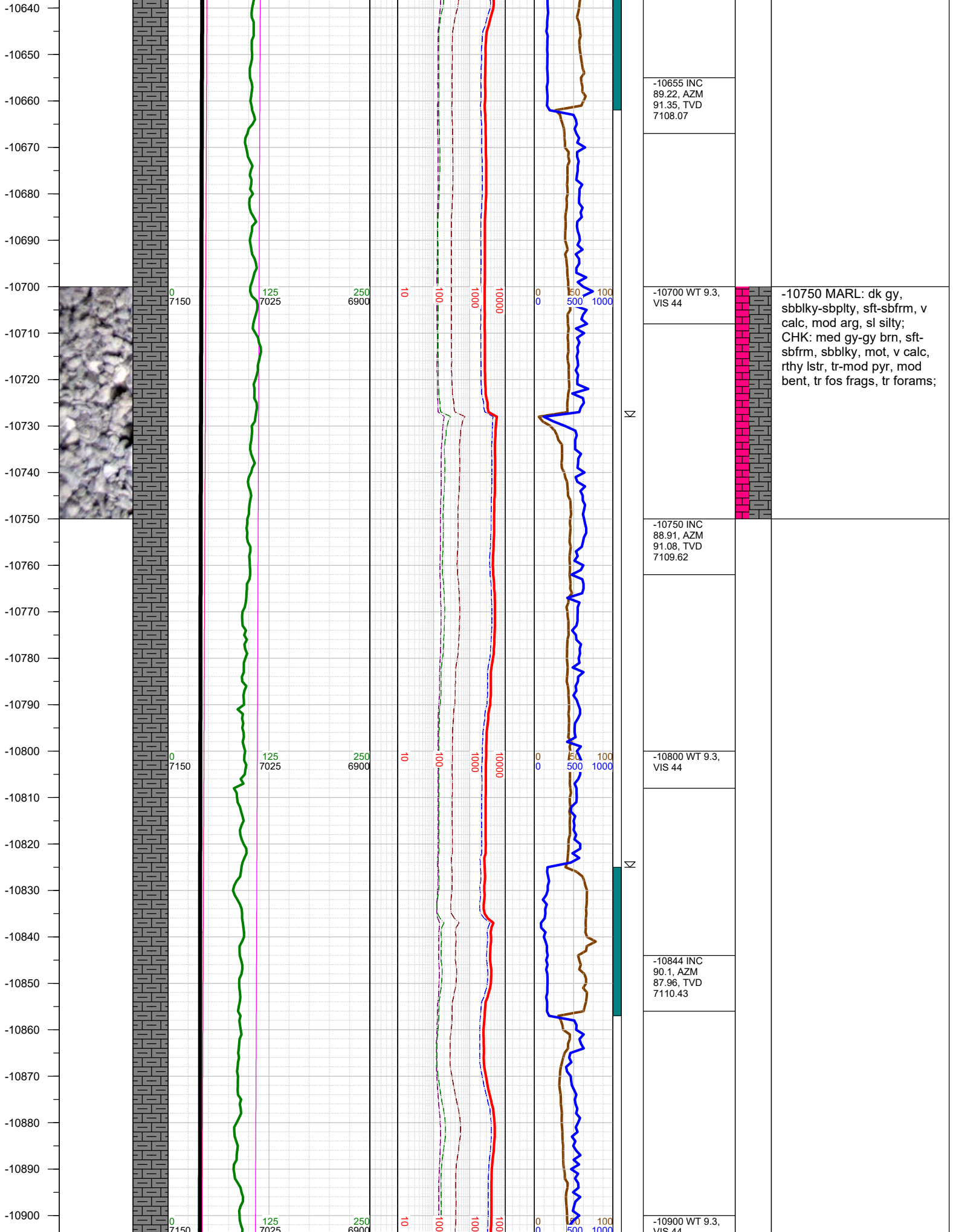




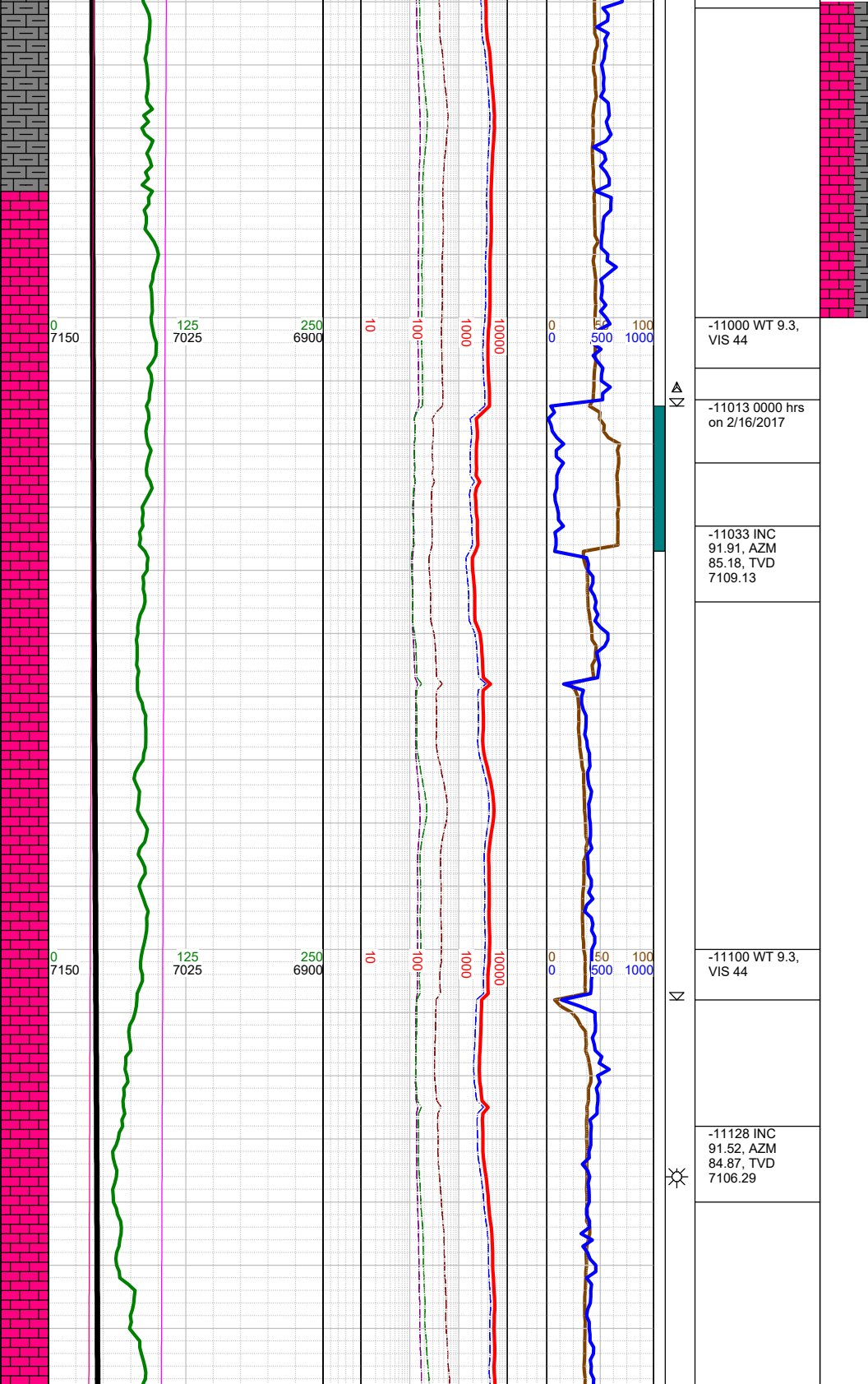
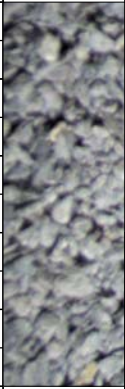








-10910
-10920
-10930
-10940
-10950
-10960
-10970
-10980
-10990
-11000
-11010
-11020
-11030
-11040
-11050
-11060
-11070
-11080
-11090
-11100
-11110
-11120
-11130
-11140
-11150
-11160



-10939 INC
89.79, AZM
87.78, TVD
7110.52

-11000 CHK: med gy-gy
brn, sft-sbfrm, sbblky, mot,
v calc, rthy lstr; MARL: dk
gy, sbblky-sbplty, sft-sbfrm,
v calc, mod arg, sl silty, tr-
mod pyr, mod bent, mod
fos frags, mod forams;

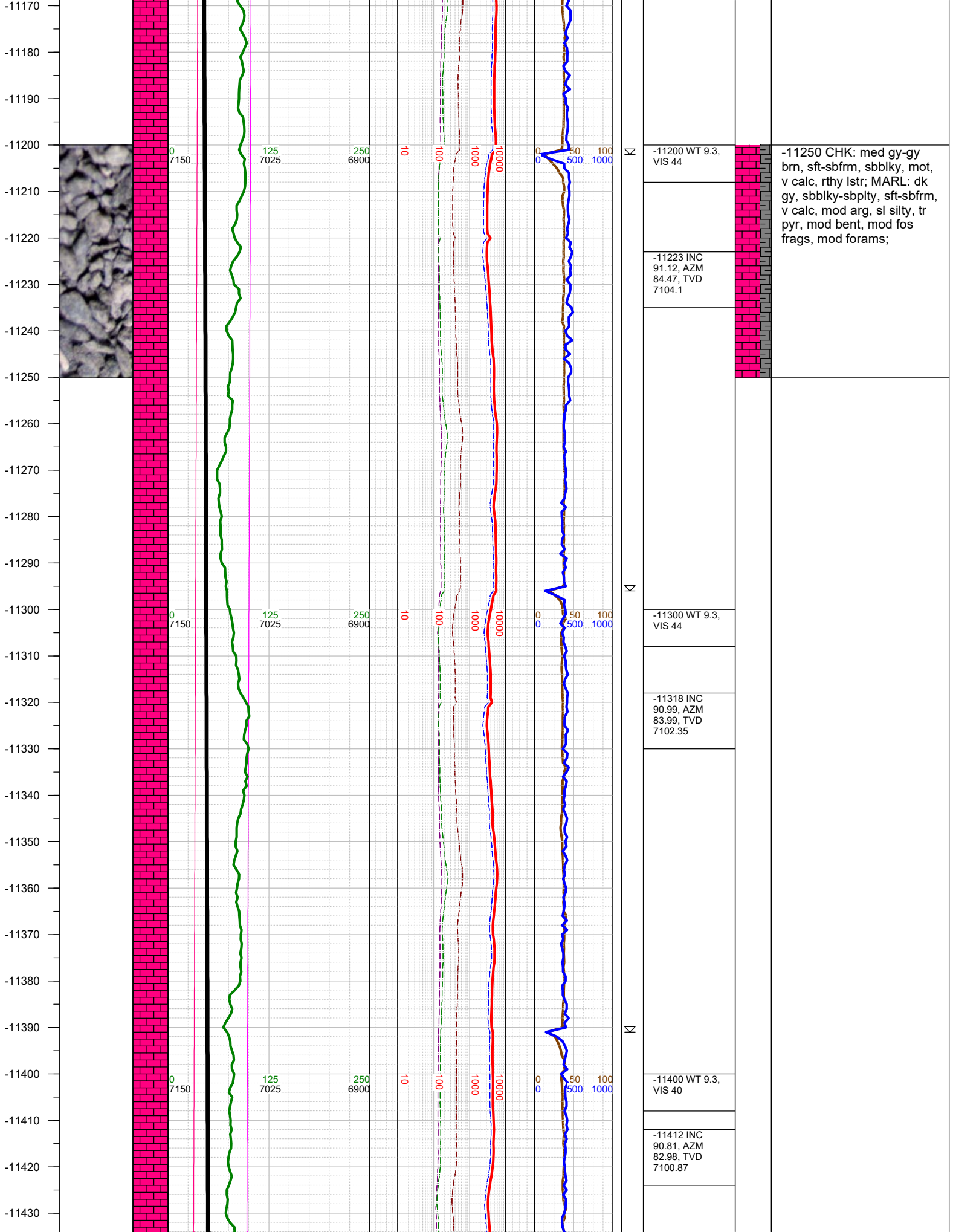
-11000 WT 9.3,
VIS 44

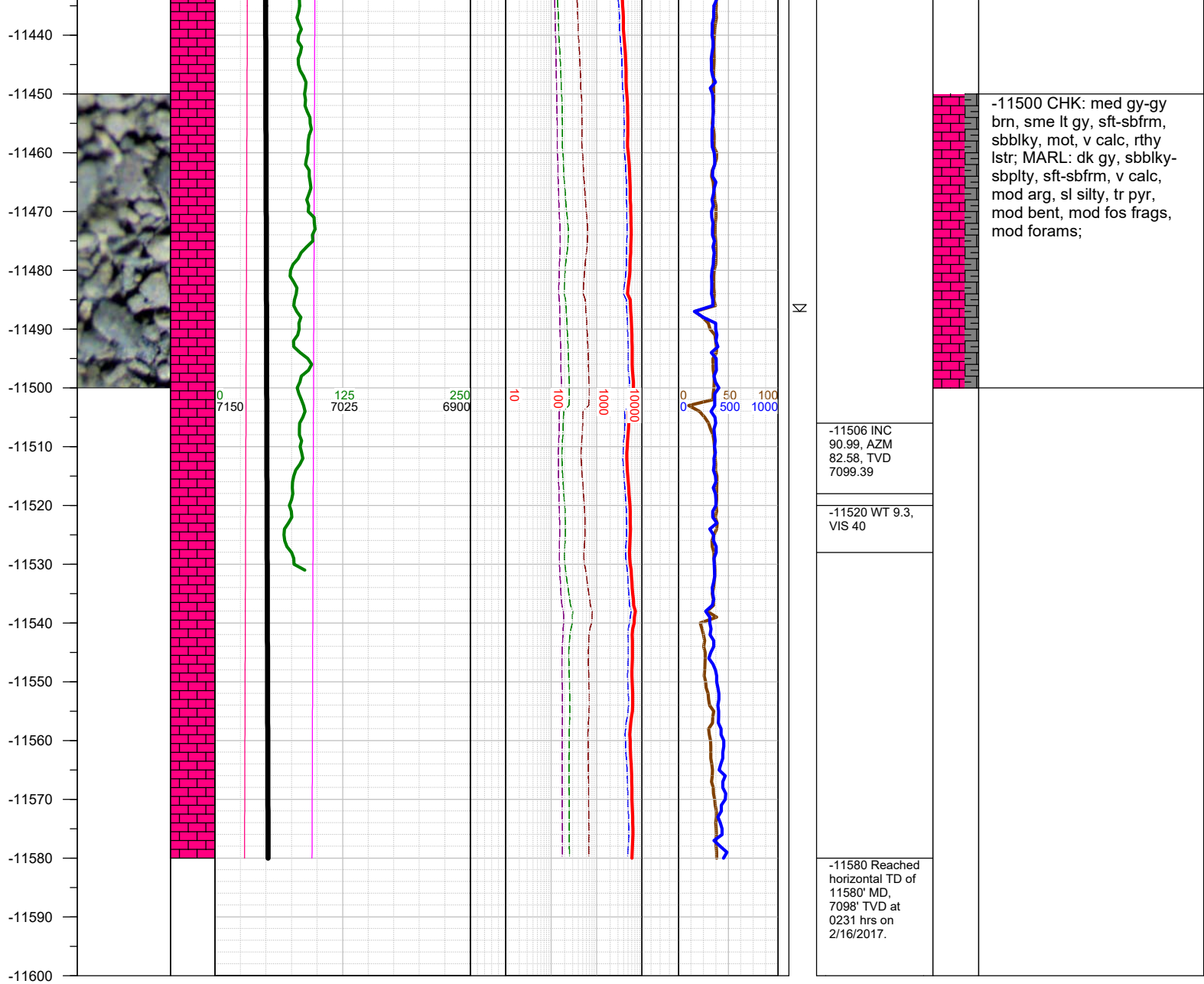
-11013 0000 hrs
on 2/16/2017

-11033 INC
91.91, AZM
85.18, TVD
7109.13

-11100 WT 9.3,
VIS 44

-11128 INC
91.52, AZM
84.87, TVD
7106.29





TOTAL DEPTH = 11580'

Thank you for using Earth Science Agency