



Project: WELD COUNTY, CO  
Site: Kiteley 21-I Pad  
Well: Kiteley 6  
Wellbore: Kiteley 6  
Design: Kiteley 6  
Latitude: 40° 12' 28.451 N  
Longitude: 105° 0' 54.680 W  
GL: 4990.00  
KB: New KB @ 5018.00ft (Cyclone 37)



#### WELLBORE TARGET DETAILS (LAT/LONG)

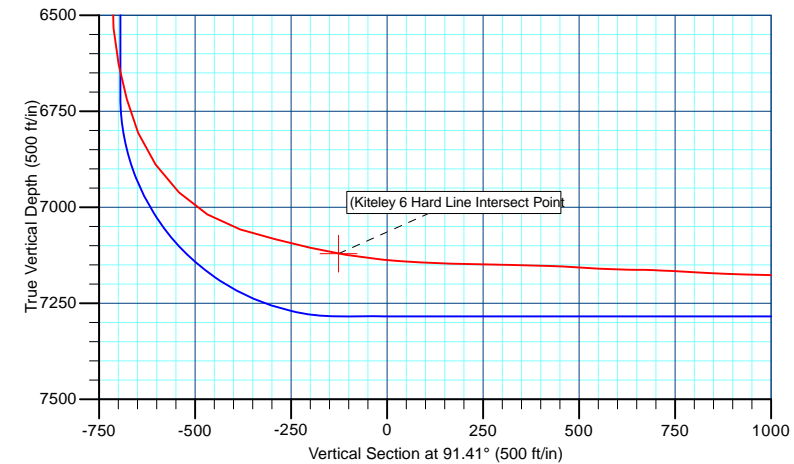
| Name           | TVD     | +N/-S   | +E/-W   | Northing   | Easting    | Latitude         | Longitude       |
|----------------|---------|---------|---------|------------|------------|------------------|-----------------|
| PBHL Kiteley 6 | 7285.00 | -104.54 | 4232.25 | 1318870.14 | 3139639.56 | 40° 12' 27.414 N | 105° 0' 0.130 W |

#### WELL DETAILS: Kiteley 6

| +N/-S | +E/-W | Northing   | Ground Level:<br>Easting | 4990.00<br>Latitude | 105° 0' 54.680 W<br>Longitude | Slot |
|-------|-------|------------|--------------------------|---------------------|-------------------------------|------|
| 0.00  | 0.00  | 1318951.53 | 3135406.81               | 40° 12' 28.451 N    |                               |      |

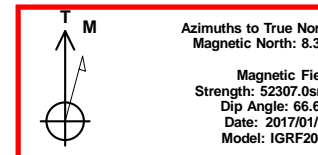
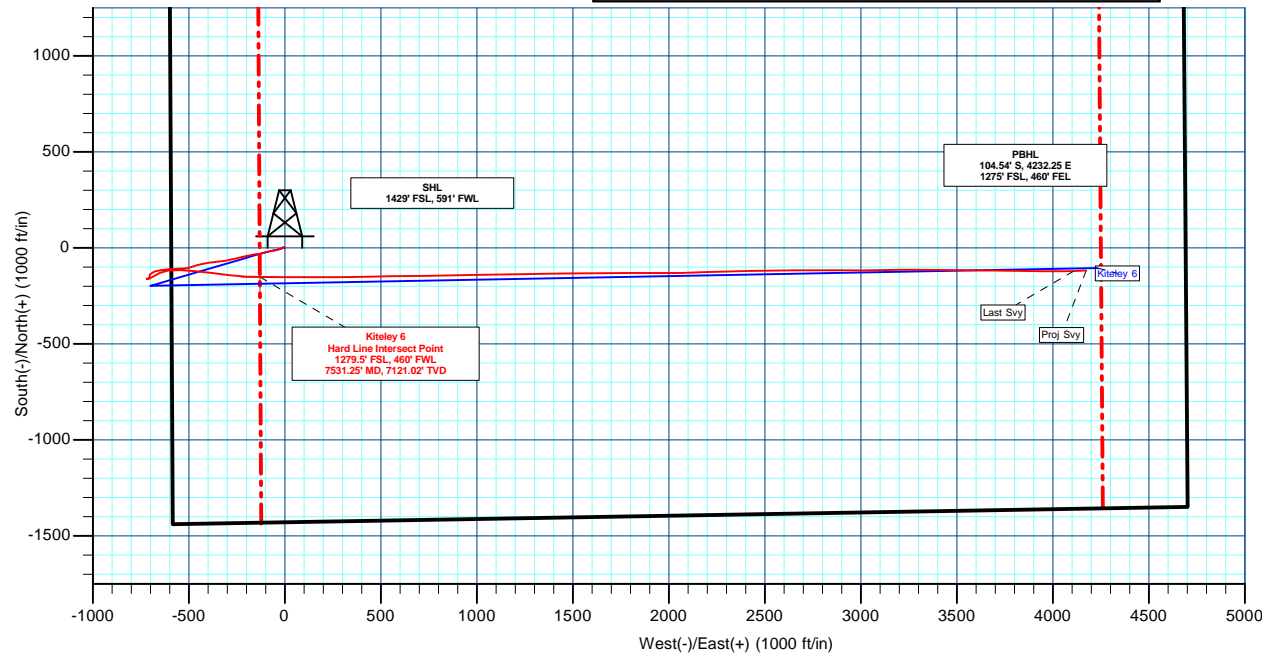
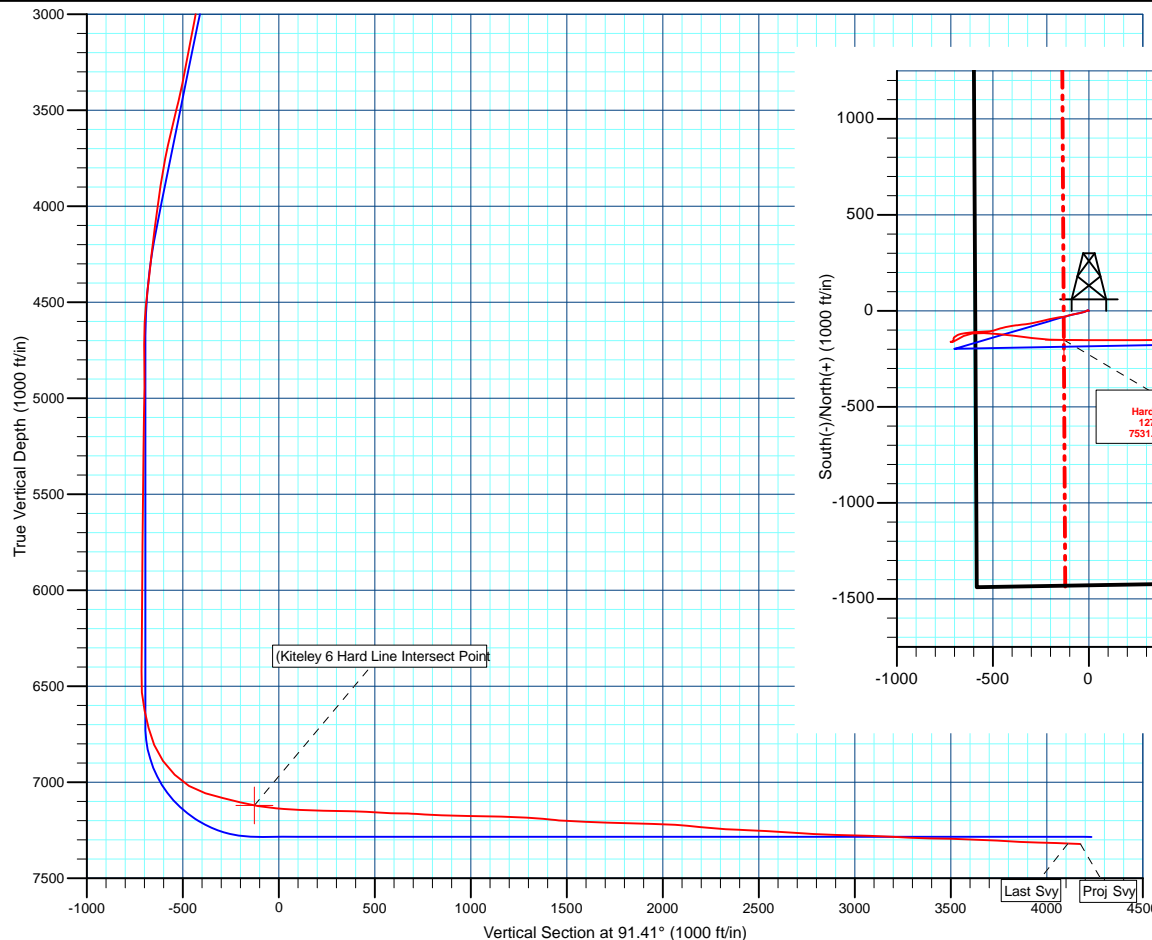
#### SECTION DETAILS

| MD       | Inc   | Azi    | TVD     | +N/-S   | +E/-W   | Dleg  | TFace  | Vsect   | Annotation                       |
|----------|-------|--------|---------|---------|---------|-------|--------|---------|----------------------------------|
| 1505.00  | 11.10 | 256.10 | 1497.78 | -24.88  | -108.01 | 0.00  | 0.00   | -107.36 | Surface Tie on 2.00' DLG         |
| 1556.00  | 12.00 | 253.70 | 1547.75 | -27.55  | -117.86 | 2.00  | -29.28 | -117.15 | Start 2613.33 hold at 1556.00 MD |
| 4169.33  | 12.00 | 253.70 | 4103.97 | -180.05 | -639.37 | 0.00  | 0.00   | -634.72 | Start DLS 2.00 TFO 180.00        |
| 4769.33  | 0.00  | 0.00   | 4699.60 | -197.62 | -699.45 | 2.00  | 180.00 | -694.36 | Start 2012.44 hold at 4769.33 MD |
| 6781.78  | 0.00  | 0.00   | 6712.04 | -197.62 | -699.45 | 0.00  | 0.00   | -694.36 | Start DLS 10.00 TFO 88.92        |
| 7681.78  | 90.00 | 88.92  | 7285.00 | -186.81 | -126.59 | 10.00 | 88.92  | -121.94 | Start 4359.62 hold at 7681.78 MD |
| 12041.40 | 90.00 | 88.92  | 7285.00 | -104.54 | 4232.25 | 0.00  | 0.00   | 4233.54 | TD at 12041.40                   |



Survey: Survey #1 (Kiteley 6/Kiteley 6)

Created By: TRACY WILLIAMS Date: 12:32, April 28 2017



Azimuths to True North  
Magnetic North: 8.37°  
Magnetic Field  
Strength: 52307.0snT  
Dip Angle: 66.67°  
Date: 2017/01/31  
Model: IGRF2015

PROJECT DETAILS: WELD COUNTY, CO  
Geodetic System: US State Plane 1983  
Datum: North American Datum 1983  
Ellipsoid: GRS 1980  
Zone: Colorado Northern Zone  
System Datum: Mean Sea Level