

# HALLIBURTON

iCem<sup>®</sup> Service

## **EXTRACTION OIL & GAS**

Date: Saturday, March 18, 2017

### **Kiteley #6 Production**

Job Date: Tuesday, February 21, 2017

Sincerely,

**Julia Nichols**

## Legal Notice

---

### Disclaimer:

All information in this report is provided subject to the terms and conditions which govern the services provided by Halliburton. Halliburton personnel use their best efforts in gathering information and their best judgment in interpreting it, but any interpretation, research, analysis or recommendation furnished by Halliburton are opinions based upon inferences from measurements and empirical relationships and assumptions, which inferences and empirical relationships and assumptions are not infallible, and with respect to which professionals in the industry may differ. Accordingly, HALLIBURTON IS UNABLE TO GUARANTEE THE ACCURACY OF ANY CHART INTERPRETATION, RESEARCH ANALYSIS, OR JOB RECOMMENDATION and any interpretation or recommendation is not for use of or reliance upon by any third party. The customer has full responsibility for any of its decisions which are based on the information provided in this report.

Table of Contents

---

1.0    Cementing Job Summary ..... 4

    1.1    Executive Summary .....4

2.0    Real-Time Job Summary ..... 7

    2.1    Job Event Log .....7

3.0    Attachments..... 8

    3.1    Custom Results – Job Chart with Events .....8

    3.2    Custom Results – Job Chart without Events.....9

## 1.0 Cementing Job Summary

---

### 1.1 Executive Summary

---

Halliburton appreciates the opportunity to perform the cementing services on the **Kiteley #6** cement **Production** casing job. A pre-job safety meeting was held before the job where details of the job were discussed, potential safety hazards were reviewed, and environmental compliance procedures were outlined.

**Approximately 70 barrels of cement were returned to surface.**

Halliburton maintains a continuous quality improvement process and appreciates any comments or suggestions that you may have. Halliburton again thanks you for the opportunity to perform service work on this well. We hope to be your solutions provider for future projects.

Respectfully,

**Halliburton [Ft. Lupton]**

## HALLIBURTON

## Cementing Job Summary

## The Road to Excellence Starts with Safety

Sold To #: 369404	Ship To #: 3770373	Quote #:	Sales Order #: 0903859319							
Customer: EXTRACTION OIL & GAS		Customer Rep: Jose Torres								
Well Name: KITELEY	Well #: 6	API/UWI #: 05-123-43920-00								
Field: WATTENBERG	City (SAP): LONGMONT	County/Parish: WELD	State: COLORADO							
Legal Description: NW SW-21-3N-68W-1429FSL-591FWL										
Contractor: CYCLONE		Rig/Platform Name/Num: CYCLONE 37								
Job BOM: 7523										
Well Type: HORIZONTAL OIL										
Sales Person: HALAMERICA\HX38199		Srvc Supervisor: Vaughn Oteri								
Job										
Formation Name										
Formation Depth (MD)	Top	Bottom								
Form Type		BHST								
Job depth MD	11842ft	Job Depth TVD								
Water Depth		Wk Ht Above Floor								
Perforation Depth (MD)	From	To								
Well Data										
Description	New / Used	Size in	ID in	Weight lbm/ft	Thread	Grade	Top MD ft	Bottom MD ft	Top TVD ft	Bottom TVD ft
Casing		9.625	8.921	36			0	1575	0	1575
Casing		5.5	4.778	20			0	11827	0	7300
Open Hole Section			8.5				1575	11842	1575	7300
Tools and Accessories										
Type	Size in	Qty	Make	Depth ft		Type	Size in	Qty	Make	
Guide Shoe	5.5					Top Plug	5.5	1	KLX	
Float Shoe	5.5			11827		Bottom Plug	5.5			
Float Collar	5.5			11822		SSR plug set	5.5			
Insert Float	5.5					Plug Container	5.5	1	HES	
Stage Tool	5.5					Centralizers	5.5			
Fluid Data										
Stage/Plug #: 1										
Fluid #	Stage Type	Fluid Name	Qty	Qty UoM	Mixing Density lbm/gal	Yield ft3/sack	Mix Fluid Gal	Rate bbl/min	Total Mix Fluid Gal	
1	11.5 lb/gal Tuned Spacer III	Tuned Spacer III	50	bbl	11.5	3.74		4		
Fluid #	Stage Type	Fluid Name	Qty	Qty UoM	Mixing Density lbm/gal	Yield ft3/sack	Mix Fluid Gal	Rate bbl/min	Total Mix Fluid Gal	
2	ElastiCem W/O CBL	ELASTICEM (TM) SYSTEM	150	sack	13.2	1.57		6	7.48	

last updated on 3/18/2017 9:40:43 AM

Page 1 of 2

iCem® Service

(v. 4.4.18)

Created: Saturday, March 18, 2017

## HALLIBURTON

*Cementing Job Summary*

Fluid #	Stage Type	Fluid Name	Qty	Qty UoM	Mixing Density lbm/gal	Yield ft3/sack	Mix Fluid Gal	Rate bbl/min	Total Mix Fluid Gal
3	ElastiCem Tail	ELASTICEM (TM) SYSTEM	1800	sack	13.2	1.57		6	7.49
Fluid #	Stage Type	Fluid Name	Qty	Qty UoM	Mixing Density lbm/gal	Yield ft3/sack	Mix Fluid Gal	Rate bbl/min	Total Mix Fluid Gal
4	Displacement	Displacement	0	bbl	8.33			8	
Cement Left In Pipe		Amount	4 ft		Reason			Shoe Joint	
Comment 70bbl of cement back to surface									

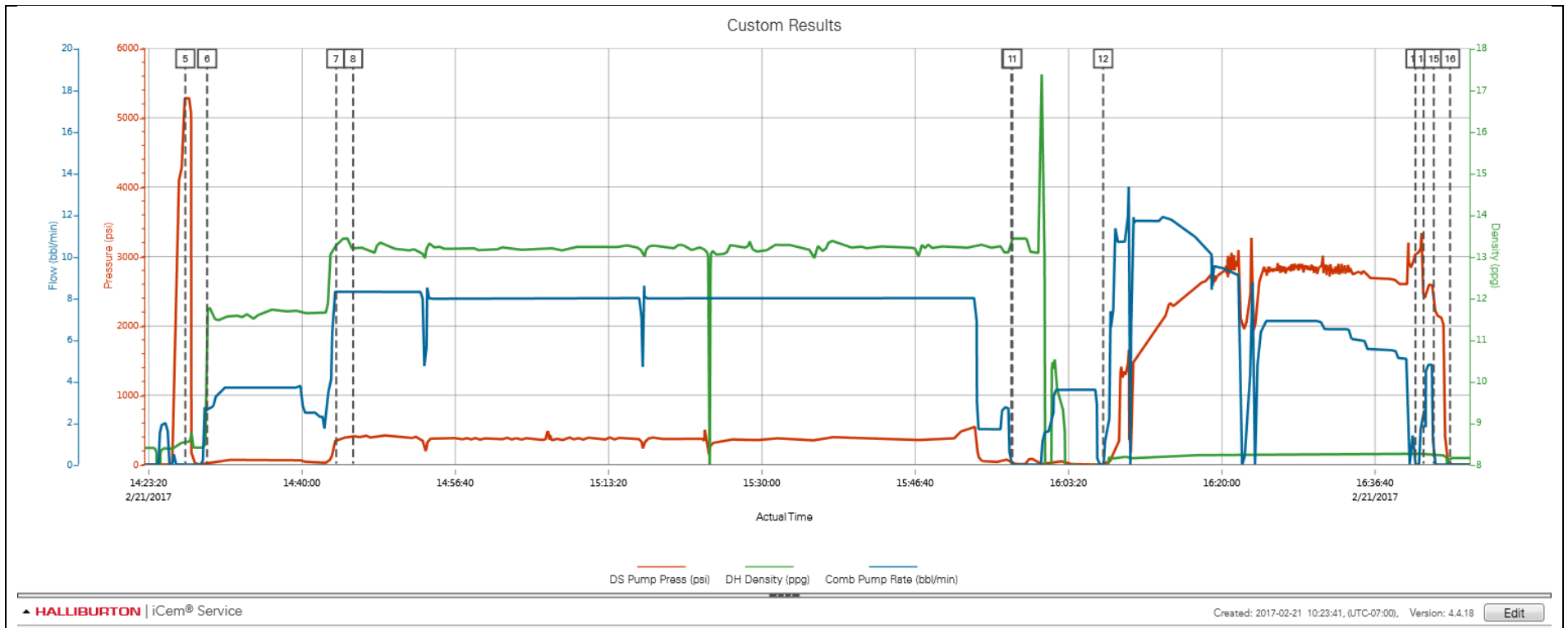
## 2.0 Real-Time Job Summary

## 2.1 Job Event Log

Type	Seq. No.	Activity	Graph Label	Date	Time	Source	DS Pump Press (psi)	DH Density (ppg)	Comb Pump Rate (bbl/min)	Comments
Event	1	Call Out	Call Out	2/21/2017	06:00:00	USER				Call out from ARC hub
Event	2	Arrive at Rig	Arrive at Rig	2/21/2017	08:00:00	USER				Arrive on location met with company rep to discuss job process and concerns
Event	3	Other	Other	2/21/2017	08:10:10	USER				TD-11842 TP-11827 FC-11827 Surf-1575 Mud-10.3ppg Casing-5.5 20#
Event	4	Start Job	Start Job	2/21/2017	13:30:18	COM4	-84.00	8.39	0.00	Held pre-job safety meeting with all hands on location to discuss job process and hazards
Event	5	Test Lines	Test Lines	2/21/2017	14:27:20	COM4	5286.00	8.56	0.00	Pressure tested pumps and lines with fresh water 5280psi
Event	6	Pump Spacer 1	Pump Spacer 1	2/21/2017	14:29:42	COM4	27.00	11.50	2.70	Mixed 50bbl of 11.5ppg Tuned spacer III 4.0bpm 65psi
Event	7	Pump Cement	Pump Cement	2/21/2017	14:43:44	COM4	356.00	13.29	8.30	Mixed 1950sks or 545bbl of 13.2ppg Y-1.57 G/sk7.48 Elasticem at 8.0bpm 407psi
Event	8	Check Weight	Check weight	2/21/2017	14:45:34	COM4	407.00	13.19	8.30	Confirmed weight on scales of 13.2ppg
Event	9	Shutdown	Shutdown	2/21/2017	15:57:07	COM4	27.00	13.43	0.00	
Event	10	Clean Lines	Clean Lines	2/21/2017	15:57:11	COM4	21.00	13.43	0.00	Washed pumps and lines with fresh water
Event	11	Drop Top Plug	Drop Top Plug	2/21/2017	15:57:14	COM4	18.00	13.44	0.00	KLX tool hand released plug witnessed by company rep and HES supervisor
Event	12	Pump Displacement	Pump Displacement	2/21/2017	16:07:06	COM4	1.00	-0.23	0.00	Pumped 261bbl of fresh water to displace cement
Event	13	Bump Plug	Bump Plug	2/21/2017	16:41:04	COM4	3038.00	8.26	0.00	Bumped plug 500psi over final pump pressure
Event	14	Pressure Up Well	Pressure Up Well	2/21/2017	16:41:56	COM4	2442.00	8.24	2.70	Pressure up well to blow disc in plug 3326psi and pumped 5bbl in to shoe
Event	15	Other	Other	2/21/2017	16:43:03	COM4	2337.00	8.23	0.00	Released pressure back to pump truck to check floats, floats held good 2.0bbl back
Event	16	End Job	End Job	2/21/2017	16:44:49	COM4	9.00	8.16	0.00	70bbl of cement back to surface

## 3.0 Attachments

### 3.1 Custom Results – Job Chart with Events





3.2 Custom Results – Job Chart without Events

