

# HALLIBURTON

iCem<sup>®</sup> Service

## **EXTRACTION OIL & GAS**

Date: Saturday, February 11, 2017

## **KITELEY #7 SURFACE**

Job Date: Tuesday, January 24, 2017

Sincerely,

**Julia Nichols**

## Legal Notice

---

### Disclaimer:

All information in this report is provided subject to the terms and conditions which govern the services provided by Halliburton. Halliburton personnel use their best efforts in gathering information and their best judgment in interpreting it, but any interpretation, research, analysis or recommendation furnished by Halliburton are opinions based upon inferences from measurements and empirical relationships and assumptions, which inferences and empirical relationships and assumptions are not infallible, and with respect to which professionals in the industry may differ. Accordingly, HALLIBURTON IS UNABLE TO GUARANTEE THE ACCURACY OF ANY CHART INTERPRETATION, RESEARCH ANALYSIS, OR JOB RECOMMENDATION and any interpretation or recommendation is not for use of or reliance upon by any third party. The customer has full responsibility for any of its decisions which are based on the information provided in this report.

Table of Contents

---

1.0    Cementing Job Summary ..... 4

    1.1    Executive Summary .....4

2.0    Real-Time Job Summary ..... 7

    2.1    Job Event Log .....7

3.0    Attachments..... 9

    3.1    Custom Results – Job Chart with Events .....9

    3.2    Custom Results – Job Chart without Events.....10

## 1.0 Cementing Job Summary

---

### 1.1 Executive Summary

---

Halliburton appreciates the opportunity to perform the cementing services on the **Kiteley 7** cement **Surface** casing job. A pre-job safety meeting was held before the job where details of the job were discussed, potential safety hazards were reviewed, and environmental compliance procedures were outlined.

**Approximately 30 barrels of cement were returned to surface.**

Halliburton maintains a continuous quality improvement process and appreciates any comments or suggestions that you may have. Halliburton again thanks you for the opportunity to perform service work on this well. We hope to be your solutions provider for future projects.

Respectfully,

**Halliburton [Ft. Lupton]**

HALLIBURTON

## Cementing Job Summary

The Road to Excellence Starts with Safety

Sold To #: 369404		Ship To #: 3770361		Quote #:		Sales Order #: 0903801086	
Customer: EXTRACTION OIL & GAS -				Customer Rep: Shawn M			
Well Name: KITELEY			Well #: 7		API/UWI #: 05-123-43919-00		
Field: WATTENBERG		City (SAP): LONGMONT		County/Parish: WELD		State: COLORADO	
Legal Description: NW SW-21-3N-68W-1409FSL-606FWL							
Contractor:				Rig/Platform Name/Num: Spud Rig			
Job BOM: 7521							
Well Type: HORIZONTAL OIL							
Sales Person: HALAMERICA/HX38199				Srvc Supervisor: Bradley Hinkle			
Job							

Formation Name			
Formation Depth (MD)	Top		Bottom
Form Type			BHST
Job depth MD	1575ft	Job Depth TVD	157 /ft
Water Depth		Wk Ht Above Floor	
Perforation Depth (MD)	From	To	

## Well Data

Description	New / Used	Size in	ID in	Weight lbm/ft	Thread	Grade	Top MD ft	Bottom MD ft	Top TVD ft	Bottom TVD ft
Casing		9.625	8.921	36			0	1575	0	1575
Open Hole Section			13.5				0	1577	0	1577

## Tools and Accessories

Type	Size in	Qty	Make	Depth ft	Type	Size in	Qty	Make
Guide Shoe	9.625				Top Plug	9.625	1	HES
Float Shoe	9.625	1		1575	Bottom Plug	9.625		HES
Float Collar	9.625	1		1533	SSR plug set	9.625		HES
Insert Float	9.625				Plug Container	9.625		HES
Stage Tool	9.625				Centralizers	9.625		HES

## Fluid Data

Stage/Plug #: 1

Fluid #	Stage Type	Fluid Name	Qty	Qty UoM	Mixing Density lbm/gal	Yield ft <sup>3</sup> /sack	Mix Fluid Gal	Rate bbl/min	Total Mix Fluid Gal
1	Spacer	Red Dye Water	10	bbl	8.33			3	

Fluid #	Stage Type	Fluid Name	Qty	Qty UoM	Mixing Density lbm/gal	Yield ft <sup>3</sup> /sack	Mix Fluid Gal	Rate bbl/min	Total Mix Fluid Gal
2	Primary Cement	SWIFTCEN (TM) SYSTEM	550	sack	13.5	1.74	9.2	8	

last updated on 1/24/2017 7:10:33 PM

Page 1 of 2

iCem® Service

(v. 4.3.44)

Created: Saturday, February 11, 2017

HALLIBURTON

*Cementing Job Summary*

Fluid #	Stage Type	Fluid Name	Qty	Qty UoM	Mixing Density lbm/gal	Yield ft <sup>3</sup> /sack	Mix Fluid Gal	Rate bbl/min	Total Mix Fluid Gal	
3	Displacement	Fresh Water	118	bbl	8.33					
Cement Left In Pipe		Amount	42 ft		Reason			Shoe Joint		
Mix Water: pH 6		Mix Water Chloride:		00 ppm		Mix Water Temperature:		79 °F °C		
Cement Temperature:		75 °F °C		Plug Displaced by:## lb/gal kg/m3 XXXX		Disp. Temperature:		## °F °C		
Plug Bumped?		Yes		Bump Pressure:		520 psi MPa		Floats Held?		Yes
Cement Returns:		30 bbl m3		Returns Density:## lb/gal kg/m3		Returns Temperature:		## °F °C		
Comment 30 bbls cement to surface										

## 2.0 Real-Time Job Summary

## 2.1 Job Event Log

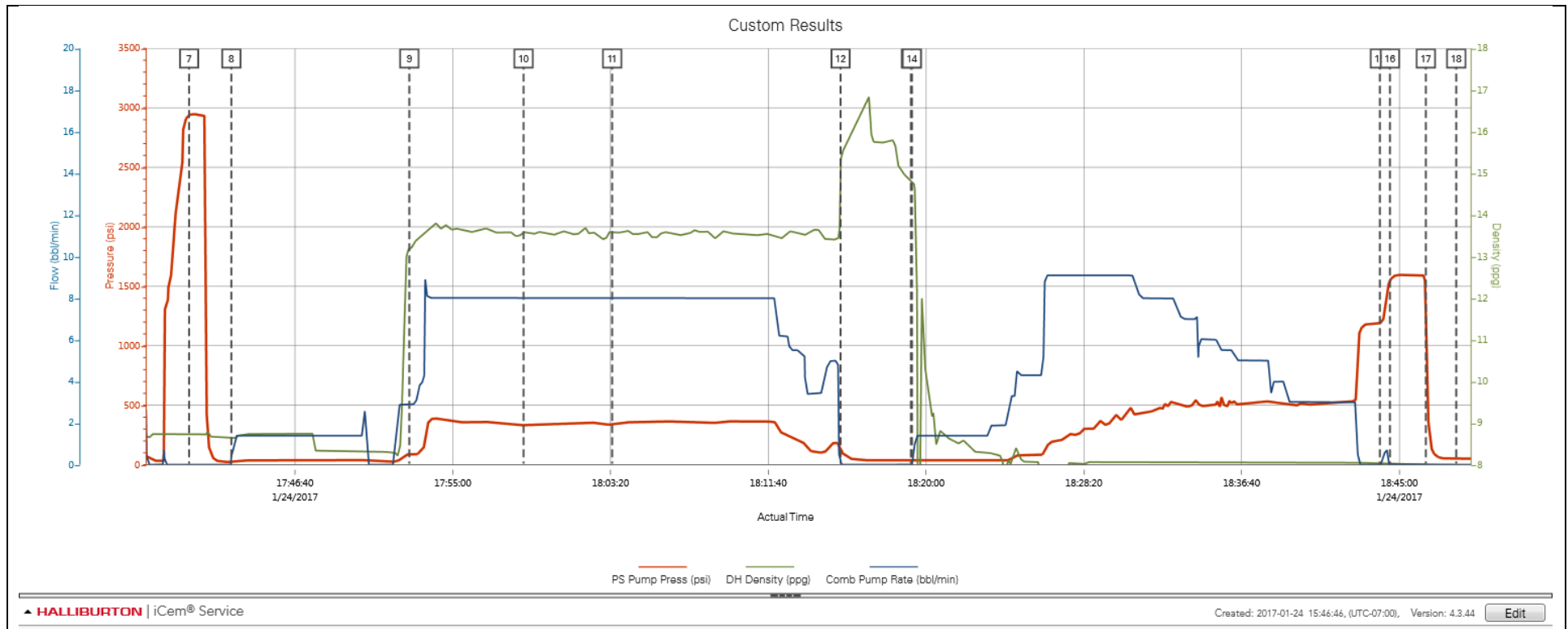
Type	Seq. No.	Activity	Graph Label	Date	Time	Source	PS Pump Press (psi)	DH Density (ppg)	Comb Pump Rate (bbl/min)	Comments
Event	1	Call Out	Call Out	1/24/2017	11:00:00	USER				Crew called for an on location of 1600. Crew was Bradley Hinkle, Luke Kosakewich, Randy Blackham, Lonnie McNeal (Crown) and Steven Richey (Crown).
Event	2	Depart Shop for Location	Depart Shop for Location	1/24/2017	15:00:00	USER				Pre-journey safety meeting.
Event	3	Arrive at Location from Service Center	Arrive at Location from Service Center	1/24/2017	15:30:00	USER				Perform a site assessment and pre rig-up safety meeting. Rig just started running casing.
Event	4	Other	Check-in With Customer	1/24/2017	15:35:00	USER				Check-in and get numbers. TD: 1577. TP:1575. FC: 1533. Mud weight 8.6 ppg. 9.625" 36# casing in a 13.5" OH.
Event	5	Safety Meeting	Safety Meeting	1/24/2017	16:17:47	USER				Pre job safety meeting with personnel on location.
Event	6	Start Job	Start Job	1/25/2017	17:37:11	COM5				
Event	7	Test Lines	Test Lines	1/25/2017	17:41:04	COM5	2942.00	8.74	0.00	Pressure test lines with a 500 PSI electronic kick-out test.
Event	8	Pump Spacer 1	Pump Spacer 1	1/25/2017	17:43:18	COM5	23.00	8.67	0.40	Pump 10 bbls red dye water.
Event	9	Pump Cement	Pump Cement	1/25/2017	17:52:42	COM5	89.00	13.20	2.90	Pump 170 bbls (550 sacks) SwiftCem mixed at 13.5 ppg. Density verified by pressurized scales. Slurry temp at 75 degrees.
Event	10	Check Weight	Check weight	1/25/2017	17:58:44	COM5	336.00	13.58	8.00	Cement weighed at 13.45 ppg.
Event	11	Check Weight	Check weight	1/25/2017	18:03:25	COM5	346.00	13.59	8.00	Cement weighed at 13.5 ppg.
Event	12	Shutdown	Shutdown	1/25/2017	18:15:29	COM5	128.00	15.01	0.00	
Event	13	Drop Top Plug	Drop Top Plug	1/25/2017	18:19:12	COM5	38.00	14.78	0.00	Top plug preloaded.
Event	14	Pump Displacement	Pump Displacement	1/25/2017	18:19:15	COM5	38.00	14.76	0.00	Pump 118 bbls fresh water. Good returns throughout. 30 bbls cement to surface.
Event	15	Bump Plug	Bump Plug	1/25/2017	18:43:58	USER	1187.00	8.03	0.00	Bump plug at 520 PSI and increase to 1100 PSI. Held for a minute before increasing pressure for casing test.

Event	16	Pressure Up Well	Pressure Up Well	1/25/2017	18:44:30	COM5	1549.00	8.04	0.00	1500 PSI casing test.
Event	17	Check Floats	Check Floats	1/25/2017	18:46:24	USER	1398.00	8.03	0.00	Floats held. .75 bbls back.
Event	18	Pre-Rig Down Safety Meeting	Pre-Rig Down Safety Meeting	1/25/2017	18:48:00	USER				Pre rig-down safety meeting.
Event	19	Depart Location for Service Center or Other Site	Depart Location for Service Center or Other Site	1/25/2017	20:00:00	USER				Pre-journey safety meeting.



## 3.0 Attachments

### 3.1 Custom Results – Job Chart with Events



3.2 Custom Results – Job Chart without Events

