

HALLIBURTON

iCem[®] Service

EXTRACTION OIL & GAS

United States of America

Kiteley 2

Surface

Job Date: Saturday, January 28, 2017

Sincerely,
Derek Trier

Legal Notice

Disclaimer:

All information in this report is provided subject to the terms and conditions which govern the services provided by Halliburton. Halliburton personnel use their best efforts in gathering information and their best judgment in interpreting it, but any interpretation, research, analysis or recommendation furnished by Halliburton are opinions based upon inferences from measurements and empirical relationships and assumptions, which inferences and empirical relationships and assumptions are not infallible, and with respect to which professionals in the industry may differ. Accordingly, HALLIBURTON IS UNABLE TO GUARANTEE THE ACCURACY OF ANY CHART INTERPRETATION, RESEARCH ANALYSIS, OR JOB RECOMMENDATION and any interpretation or recommendation is not for use of or reliance upon by any third party. The customer has full responsibility for any of its decisions which are based on the information provided in this report.

Table of Contents

1.0 Cementing Job Summary 4

 1.1 Executive Summary4

2.0 Real-Time Job Summary 7

 2.1 Job Event Log7

3.0 Attachments..... 8

 3.1 Case 1-Custom Results.png.....8

 3.2 Case 1-Custom Results (1).png9

1.0 Cementing Job Summary

1.1 Executive Summary

Halliburton appreciates the opportunity to perform the cementing services on the **Kiteley 2** cement **Surface** casing job. A pre-job safety meeting was held before the job where details of the job were discussed, potential safety hazards were reviewed, and environmental compliance procedures were outlined.

Approximately, 30bbl of cement returned to surface.

Halliburton maintains a continuous quality improvement process and appreciates any comments or suggestions that you may have. Halliburton again thanks you for the opportunity to perform service work on this well. We hope to be your solutions provider for future projects.

Respectfully,

Halliburton [Ft. Lupton]

HALLIBURTON

Cementing Job Summary

The Road to Excellence Starts with Safety

Sold To #: 369404	Ship To #: 3770376	Quote #:	Sales Order #: 0903799371
Customer: EXTRACTION OIL & GAS -		Customer Rep: Larry Seigal	
Well Name: KITELEY	Well #: 2	API/UWI #: 05-123-43925-00	
Field: WATTENBERG	City (SAP): LONGMONT	County/Parish: WELD	State: COLORADO
Legal Description: NW SW-21-3N-68W-1507FSL-528FWL			
Contractor:		Rig/Platform Name/Num: Spud Rig	
Job BOM: 7521			
Well Type: HORIZONTAL OIL			
Sales Person: HALAMERICA/HX38199		Srv Supervisor: Vaughn Oteri	
Job			
Formation Name			
Formation Depth (MD)	Top	Bottom	
Form Type		BHST	
Job depth MD	1560ft	Job Depth TVD	
Water Depth		Wk Ht Above Floor	
Perforation Depth (MD)	From	To	
Well Data			
Description	New / Used	Size in	ID in
Casing		9.625	8.921
Open Hole Section			13.5
Tools and Accessories			
Type	Size in	Qty	Make
Guide Shoe	9.625		
Float Shoe	9.625		
Float Collar	9.625		
Insert Float	9.625		
Stage Tool	9.625		
Top Plug	9.625	1	HES
Bottom Plug	9.625		
SSR plug set	9.625		
Plug Container	9.625	1	HES
Centralizers	9.625		
Fluid Data			
Stage/Plug #: 1			
Fluid #	Stage Type	Fluid Name	Qty
1	Red Dye Spacer	Red Dye Spacer	20
Fluid #	Stage Type	Fluid Name	Qty
2	SwiftCem	SWIFTCM (TM) SYSTEM	550
Fluid #	Stage Type	Fluid Name	Qty
3	Fresh Water	Fresh Water	115

last updated on 2/6/2017 11:43:50 AM

Page 1 of 2

iCem® Service

(v. 4.3.44)

Created: Monday, February 06, 2017

HALLIBURTON

Cementing Job Summary

Cement Left In Pipe	Amount	Reason	Shoe Joint
	42 ft		
Comment 30bbl of cement back to surface			

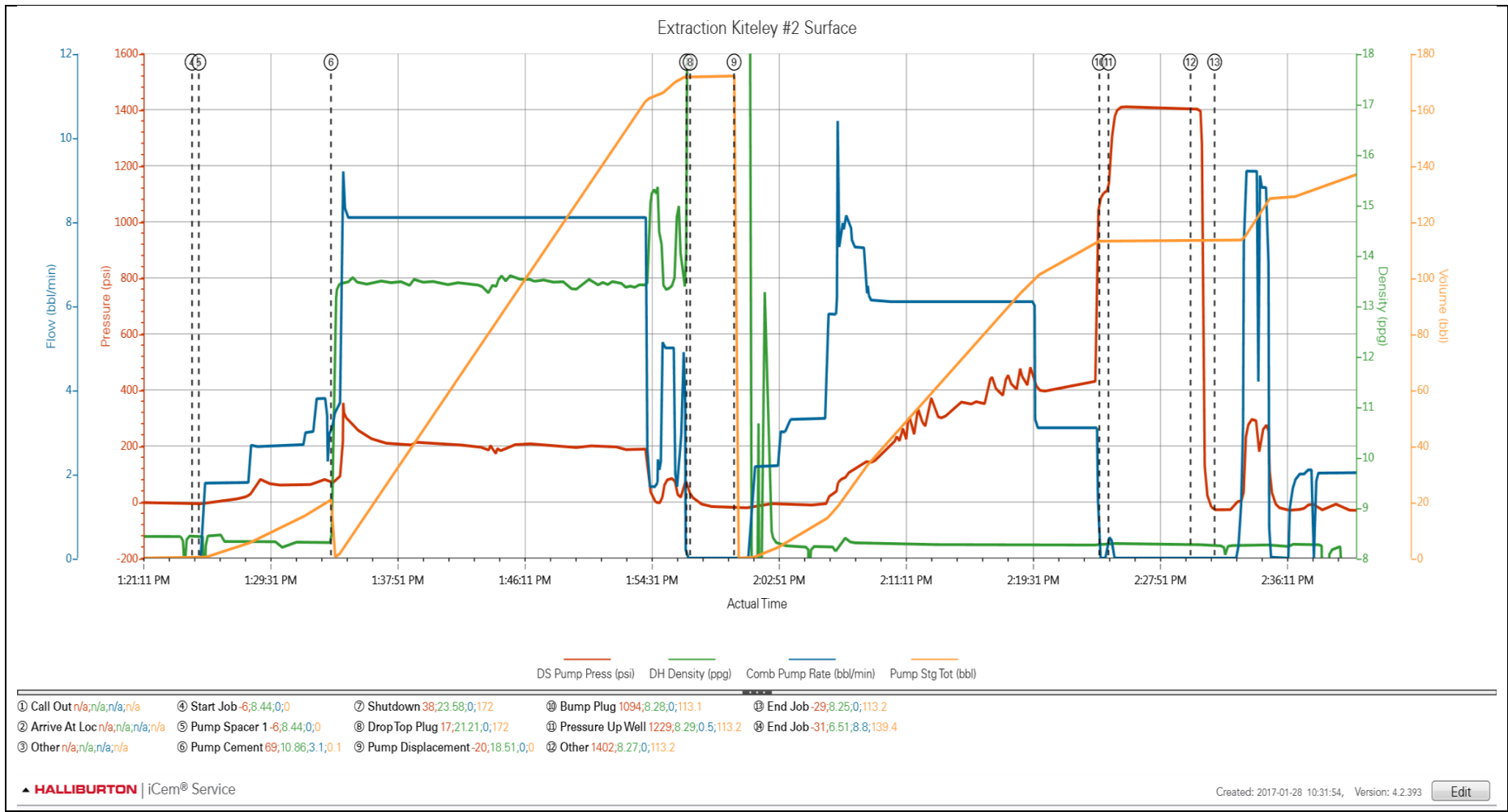
2.0 Real-Time Job Summary

2.1 Job Event Log

Type	Seq. No.	Activity	Graph Label	Date	Time	Source	PS Pump Press (psi)	DH Density (ppg)	Comb Pump Rate (bbl/min)	Comments
Event	1	Call Out	Call Out	1/28/2017	05:30:00	USER				Call out from ARC hub
Event	2	Arrive At Loc	Arrive At Loc	1/28/2017	08:00:00	USER				Arrived on location met with company rep to discuss job process and concerns
Event	3	Other	Other	1/28/2017	08:10:10	USER				TD-1560 TP-1540 FC-1497 OH-13.5 Casing 9.625 36# mud-8.33 water temp-55deg
Event	4	Start Job	Start Job	1/28/2017	13:24:30	COM4	-3.00	8.44	0.00	Held pre-job safety meeting with all hands on location to discuss job process and hazards
Event	5	Pump Spacer 1	Pump Spacer 1	1/28/2017	13:24:57	COM4	-3.00	8.44	0.00	Mixed 20bbl of fresh water with red tracer dye
Event	6	Pump Cement	Pump Cement	1/28/2017	13:33:37	COM4	76.00	10.48	3.10	Mixed 550sks or 170bbl of 13.5ppg Y-1.74 G/sk-9.2 Swiftcem at 8.0bpm 133psi
Event	7	Shutdown	Shutdown	1/28/2017	13:56:56	COM4	74.00	23.41	0.00	
Event	8	Drop Top Plug	Drop Top Plug	1/28/2017	13:57:10	COM4	45.00	21.39	0.00	Released plug witnessed by company rep
Event	9	Pump Displacement	Pump Displacement	1/28/2017	14:00:03	COM4	13.00	18.51	0.00	Pumped 115bbl of fresh water to displace cement
Event	10	Bump Plug	Bump Plug	1/28/2017	14:24:00	COM4	1174.00	8.28	0.00	Bumped plug 500psi over final pump pressure 460/1041psi
Event	11	Pressure Up Well	Pressure Up Well	1/28/2017	14:24:36	COM4	1284.00	8.28	0.40	Pressure up well to 1500psi for 5min
Event	12	Other	Other	1/28/2017	14:29:59	COM4	1490.00	8.27	0.00	Released pressure back to pump truck to check floats, floats held good 1.0bbl back
Event	13	End Job	End Job	1/28/2017	14:31:34	USER	37.00	8.25	0.00	30bbl of cement back to surface
Event	14	End Job	End Job	1/28/2017	14:41:21	COM4	39.00	6.51	8.80	

3.0 Attachments

3.1 Case 1-Custom Results.png



3.2 Case 1-Custom Results (1).png

