

OPERATOR: **Extraction Oil & Gas**

WELL NAME: **Kiteley 2**

FIELD NAME: DJ Basin - Wattenberg

DRILLING RIG: Cyclone 37

API #: 05-123-43925

LAT/LONG: 40.208117, -105.015413

SURFACE HOLE: NWSW S21-T3N-R68W, 1507' FSL, 528' FWL

BOTTOM HOLE: S21-T3N-R68W, 2150' FSL, 460' FEL



Earth Science Agency, LLC

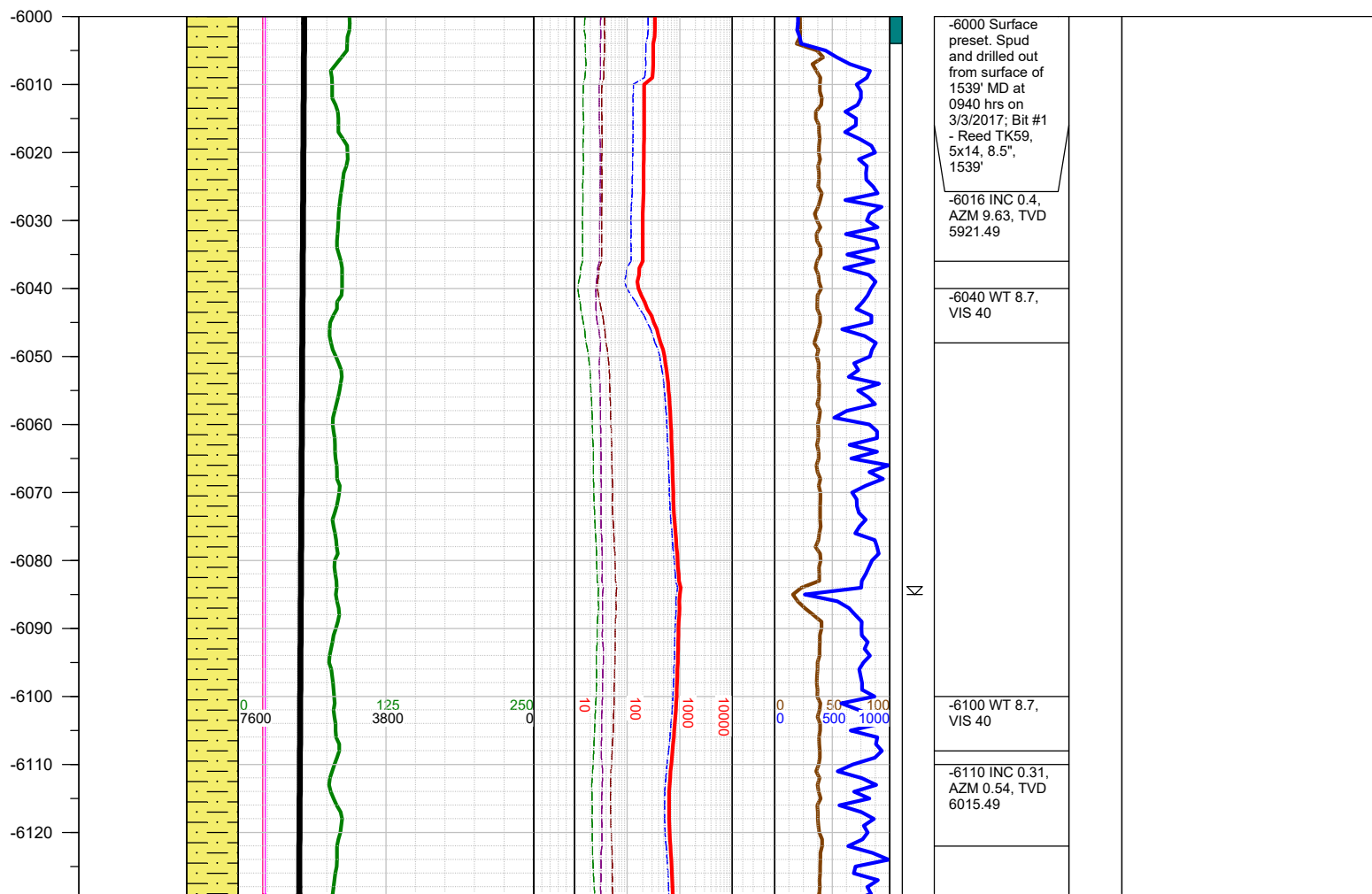
COUNTY: Weld
STATE: Colorado
GROUND ELEVATION: 4991'
KELLY BUSHING: 5019'
DRILLING FLUID: OBM
TVD VS. MD: 7104' / 11670'
SPUD DATE: March 3, 2017
TD DATE: March 5, 2017

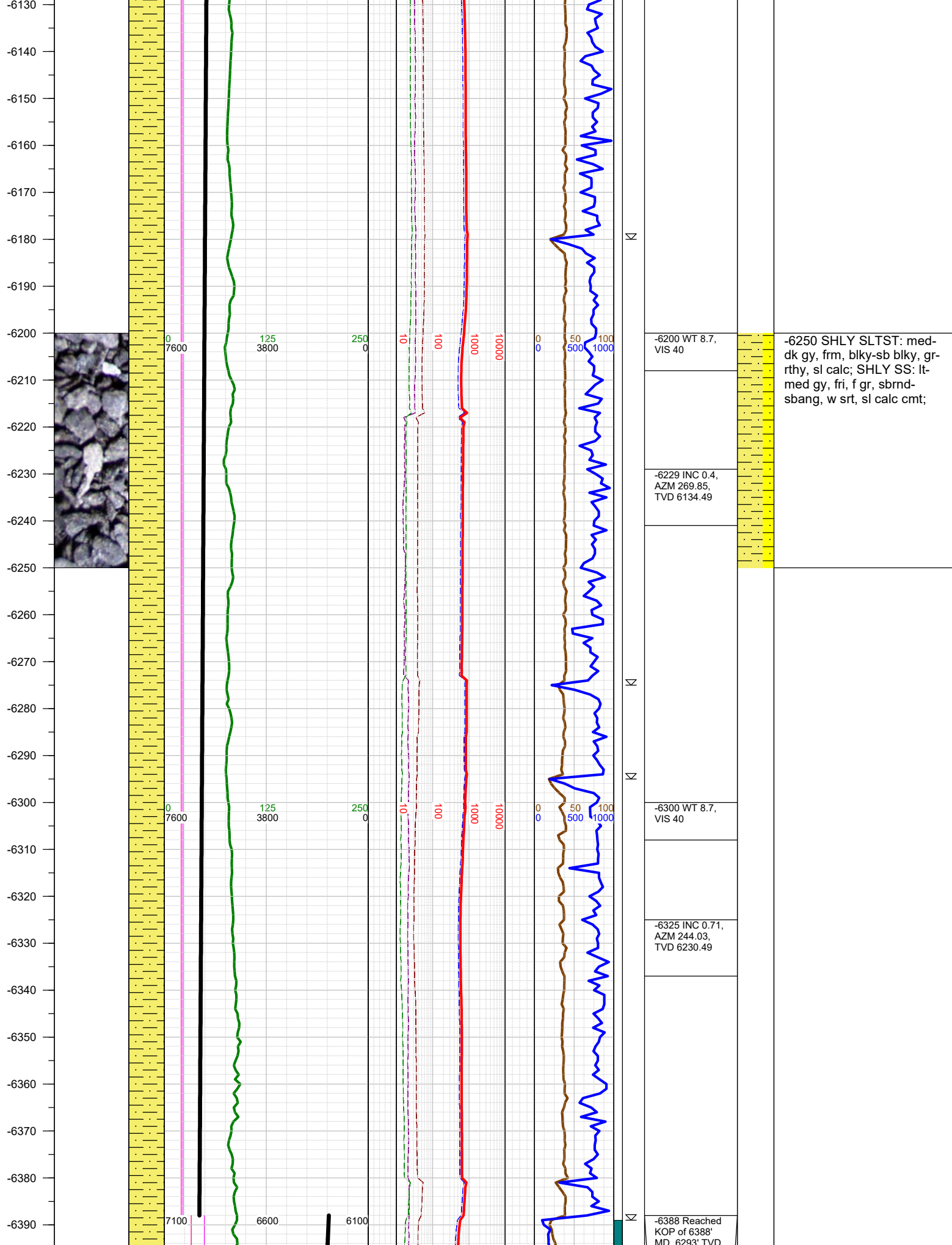
DEPTHS LOGGED: 6000' - 11670'
DATES LOGGED: March 3, 2017 - March 5, 2017
GEOLOGISTS: James Brooks, Nick Watkins
SCALE: 5" = 100'

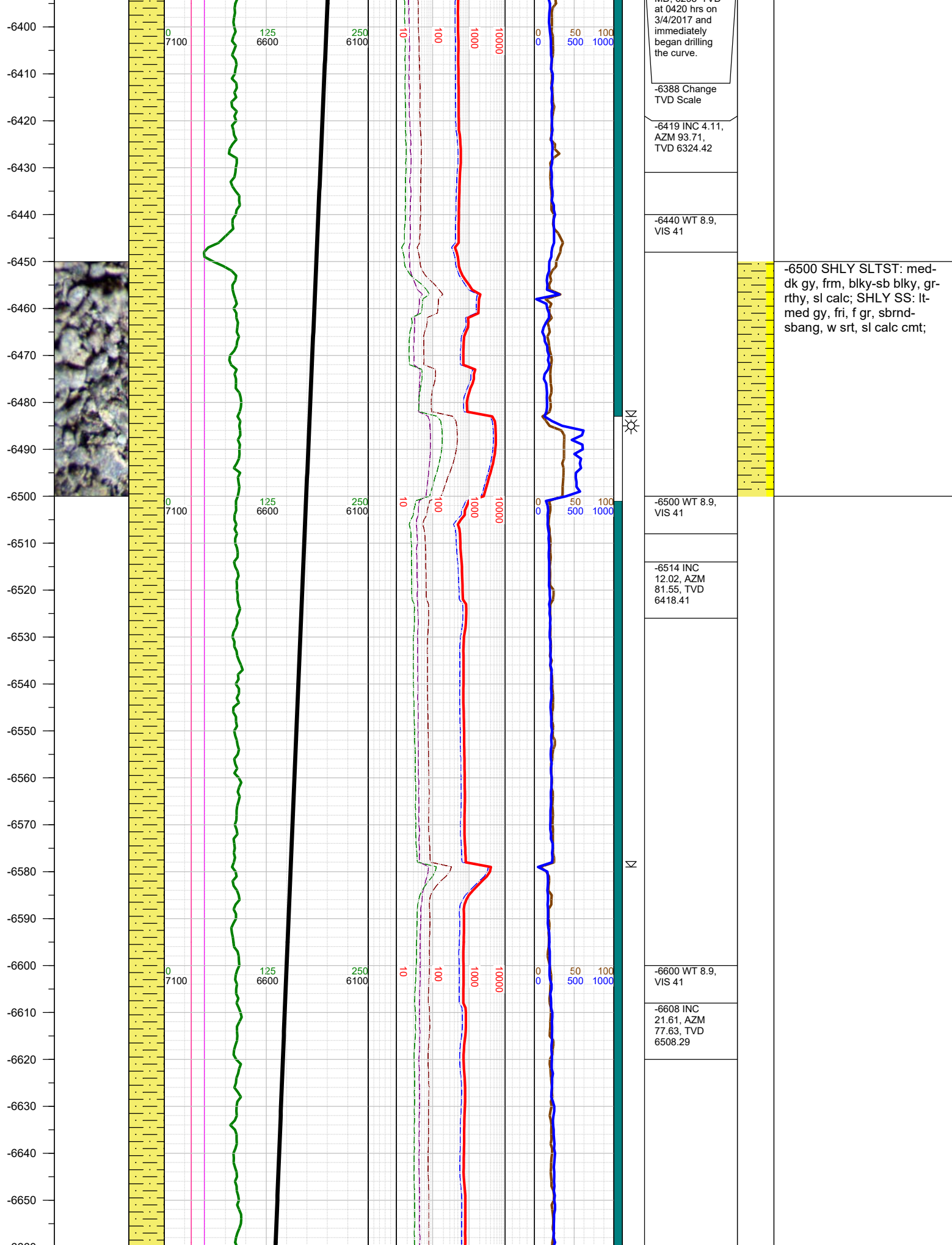
LEGEND

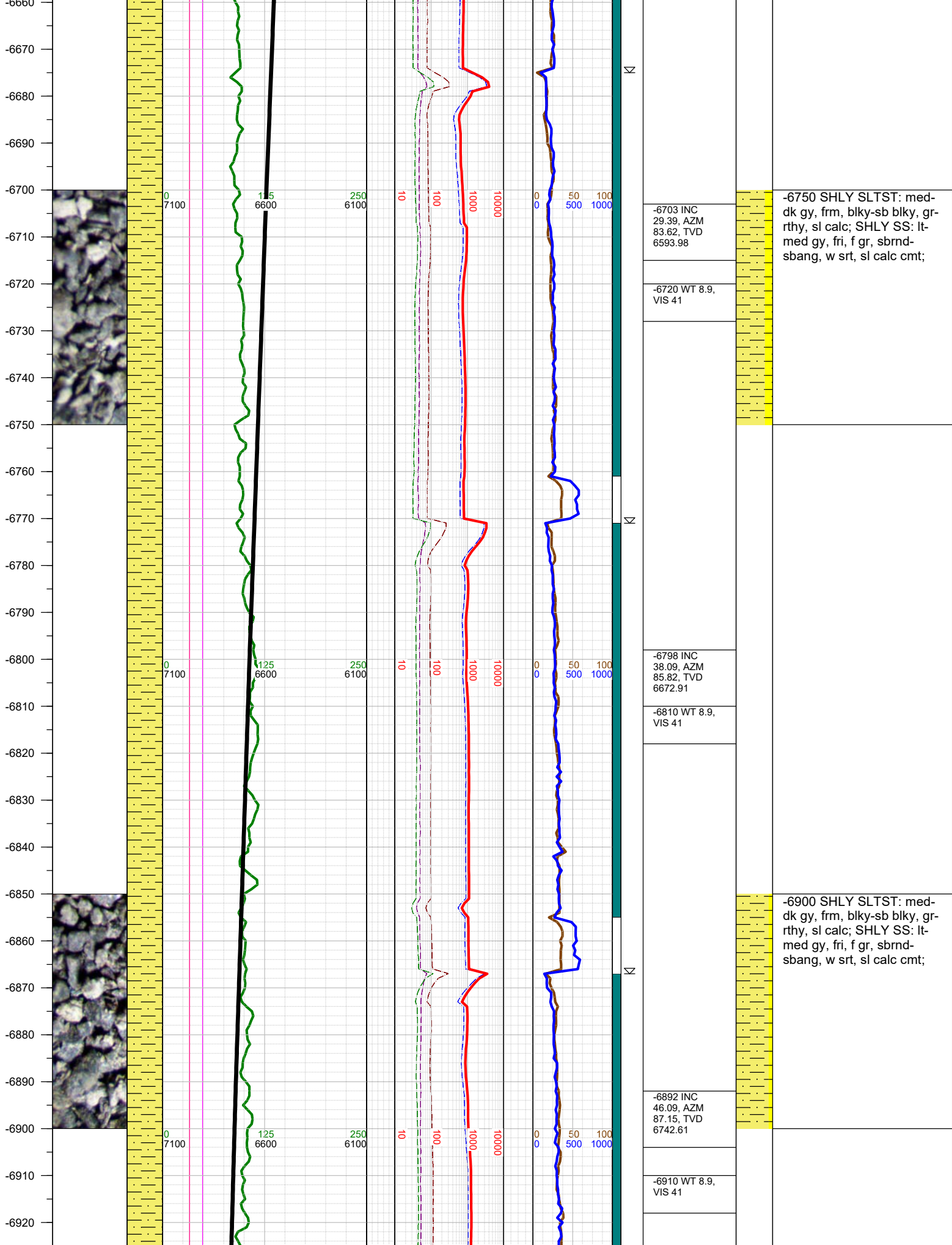


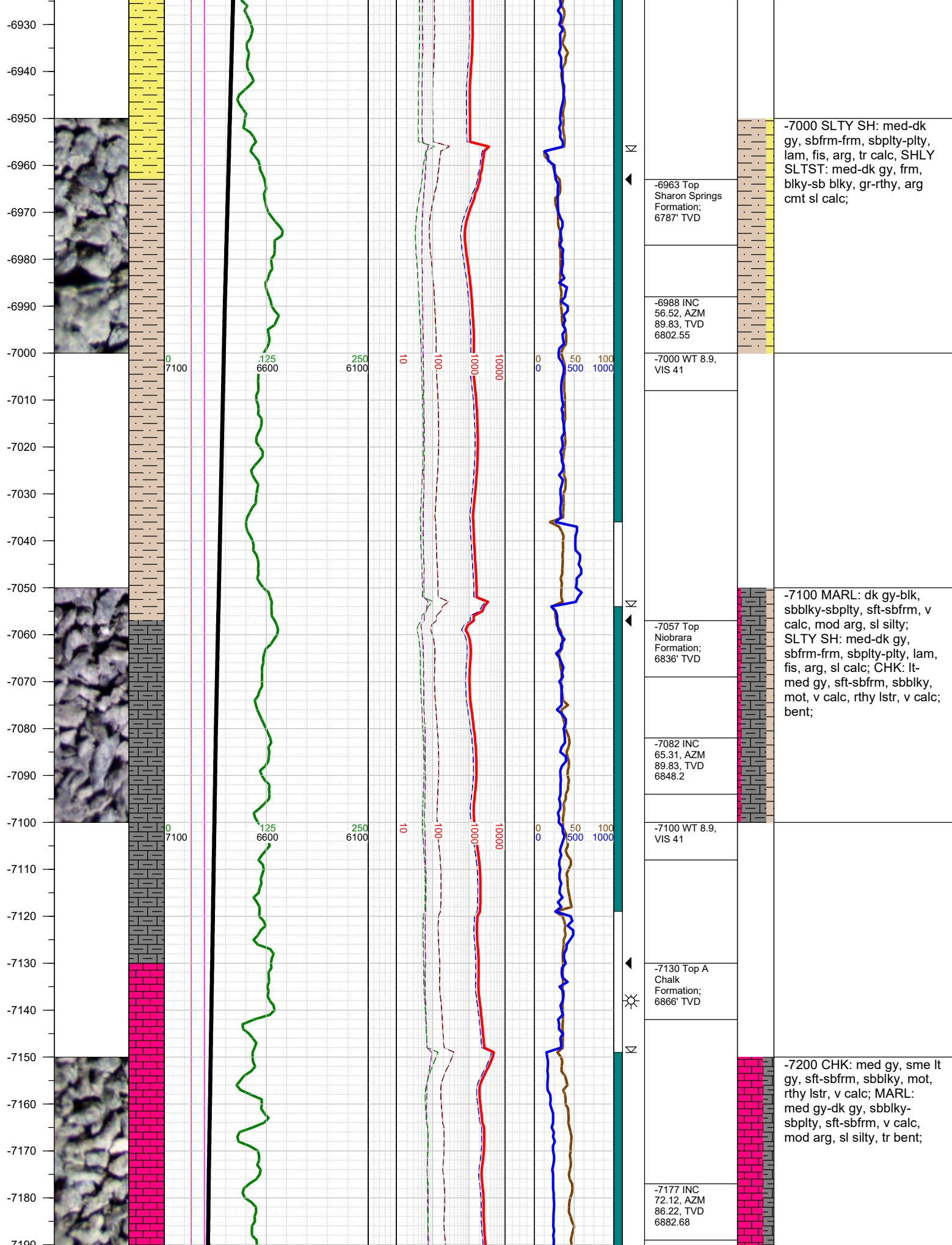
FORMATION \approx CONNECTION Δ MIDNIGHT NEW BIT GAS SHOW FAULT

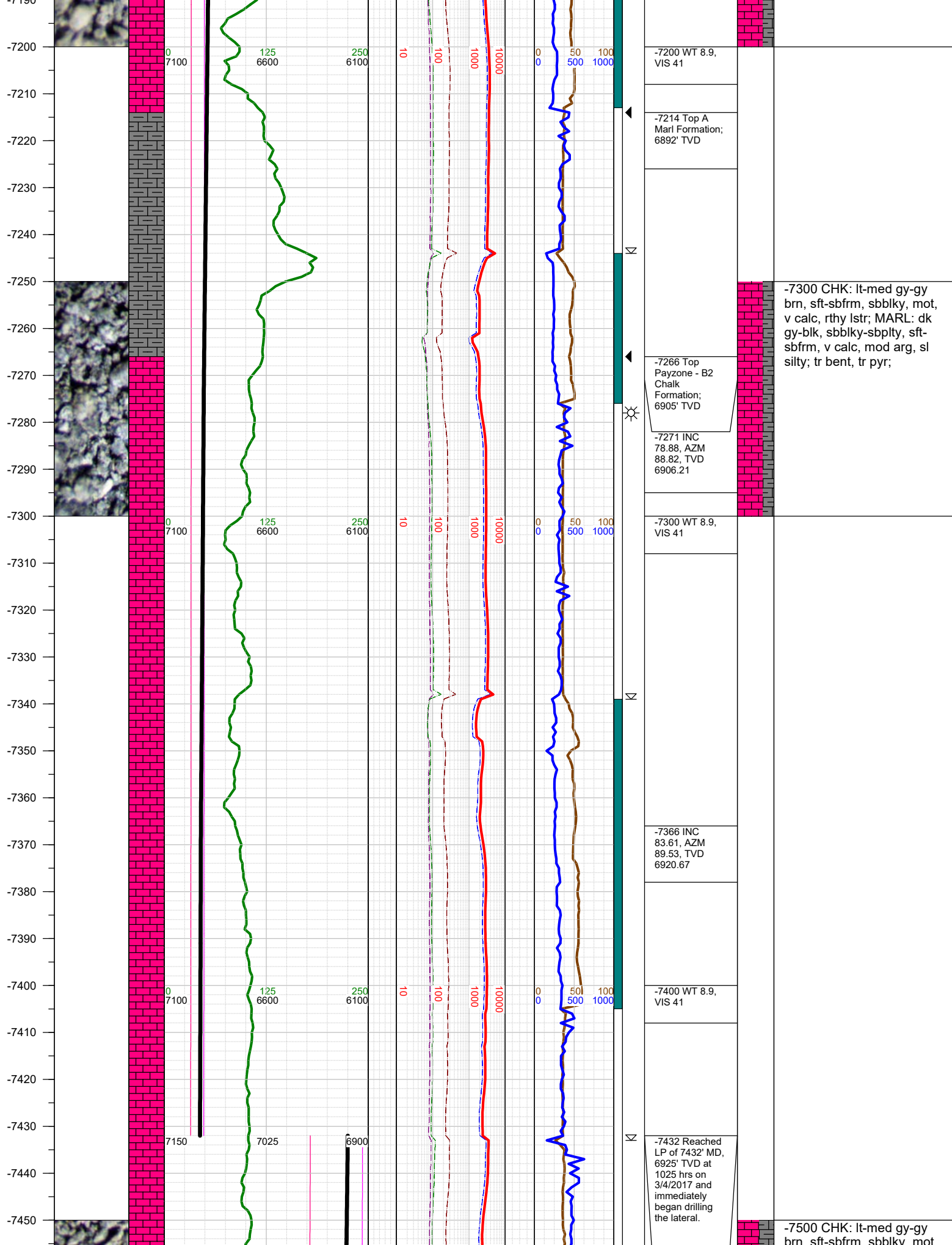


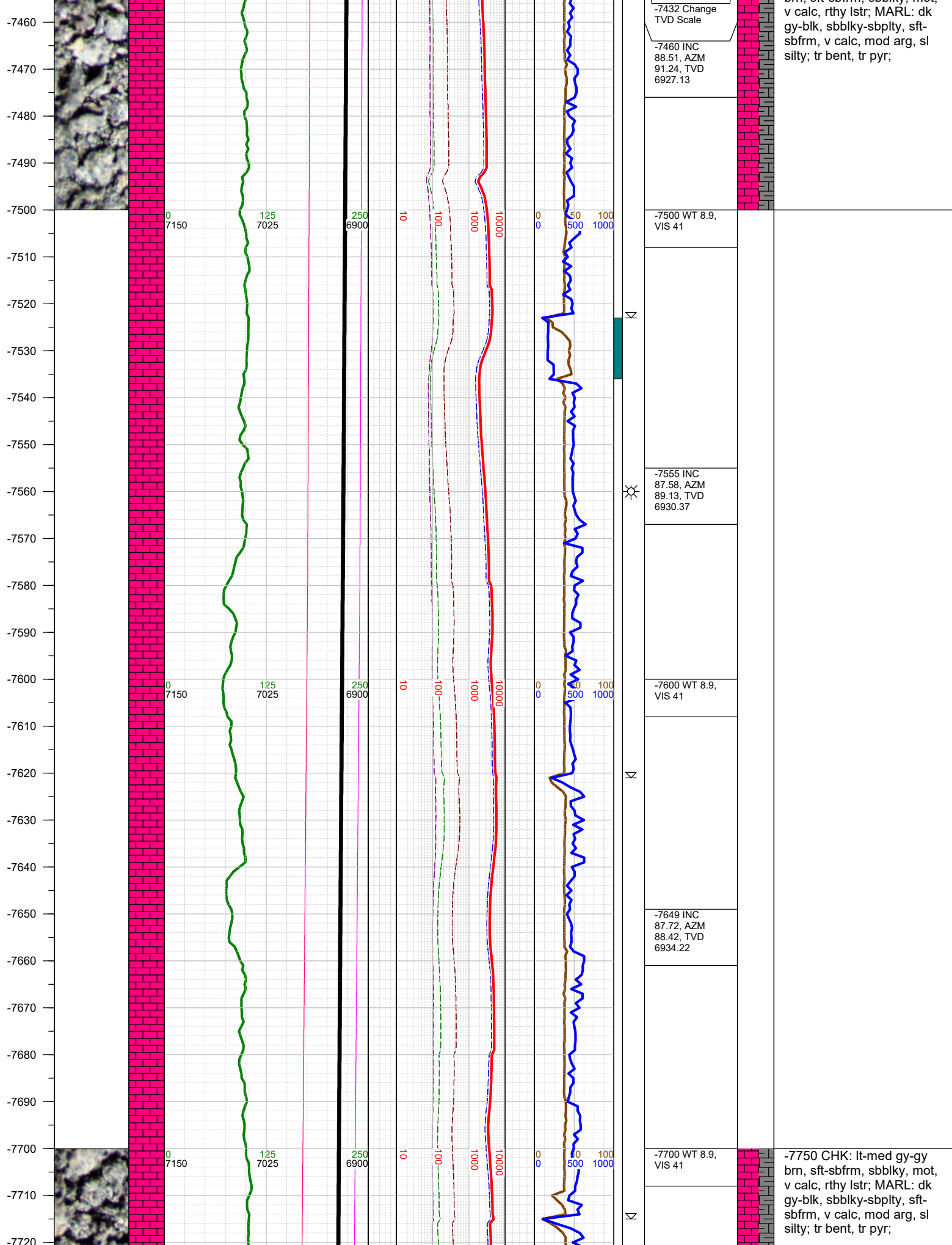


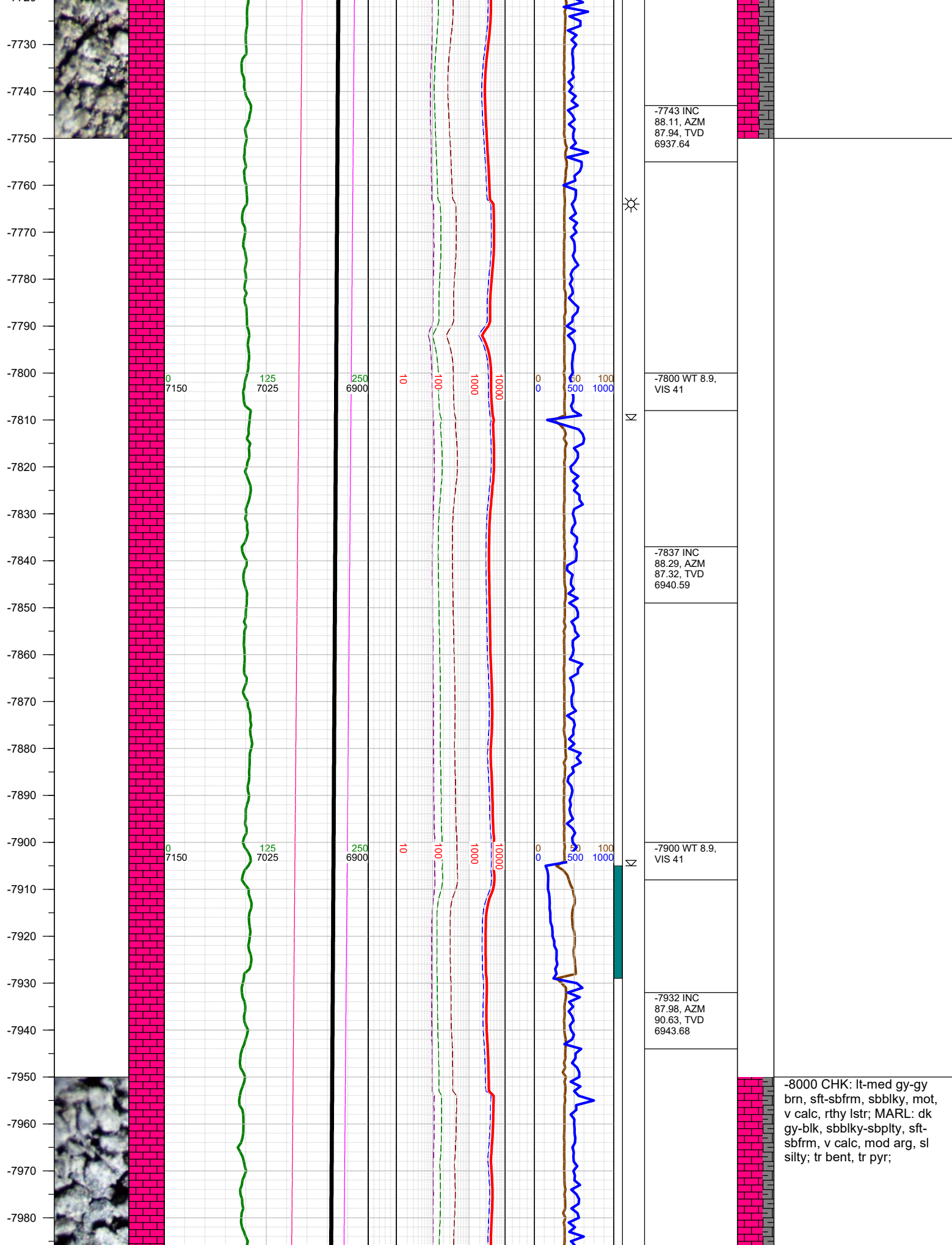


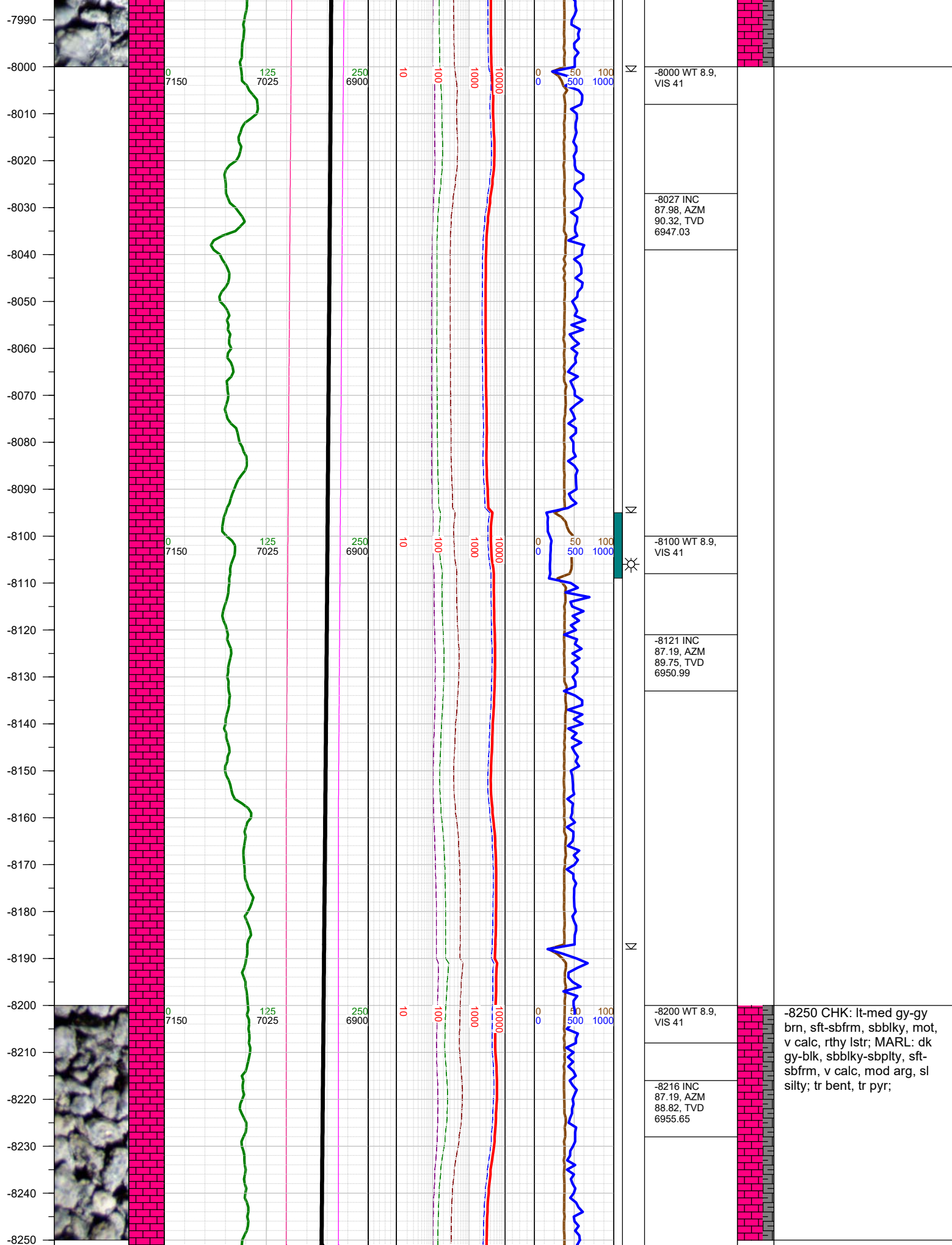


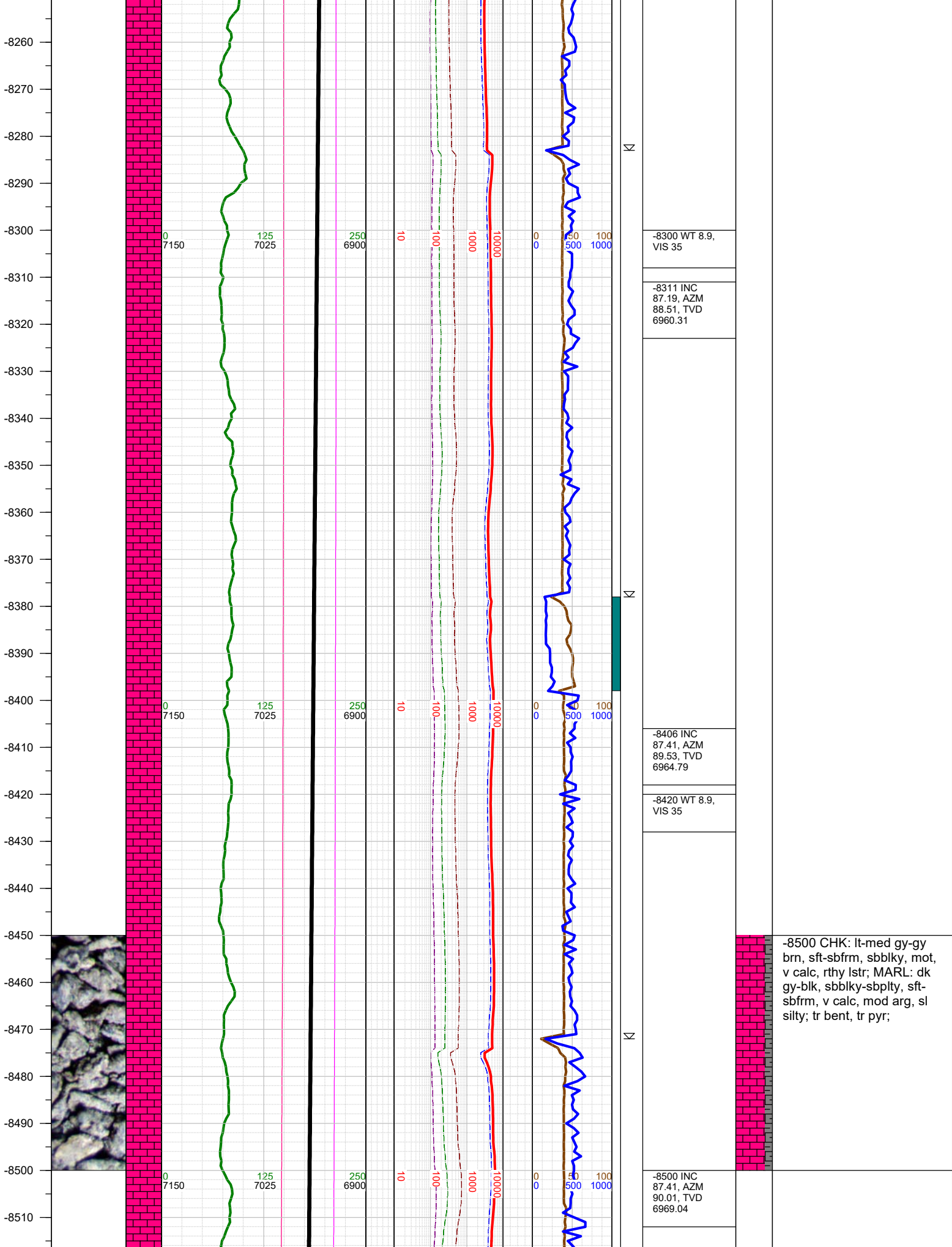






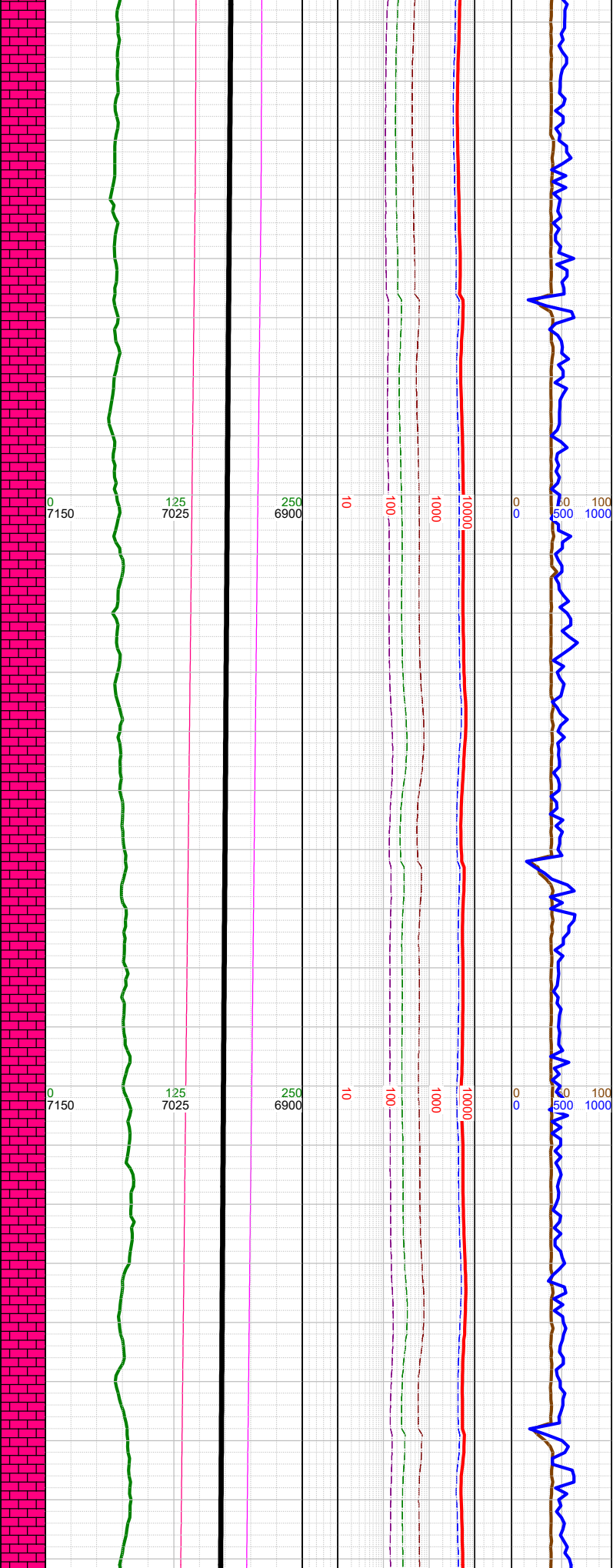
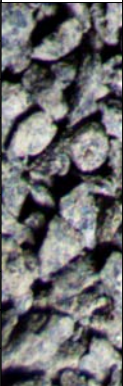






-8500 CHK: lt-med gy-gy
brn, sft-sbfrm, sbblky, mot,
v calc, rthy lstr; MARL: dk
gy-blk, sbblky-sbplty, sft-
sbfrm, v calc, mod arg, sl
silty; tr bent, tr pyr;

-8520
-8530
-8540
-8550
-8560
-8570
-8580
-8590
-8600
-8610
-8620
-8630
-8640
-8650
-8660
-8670
-8680
-8690
-8700
-8710
-8720
-8730
-8740
-8750
-8760
-8770
-8780



N



N

N

-8520 WT 8.9,
VIS 35

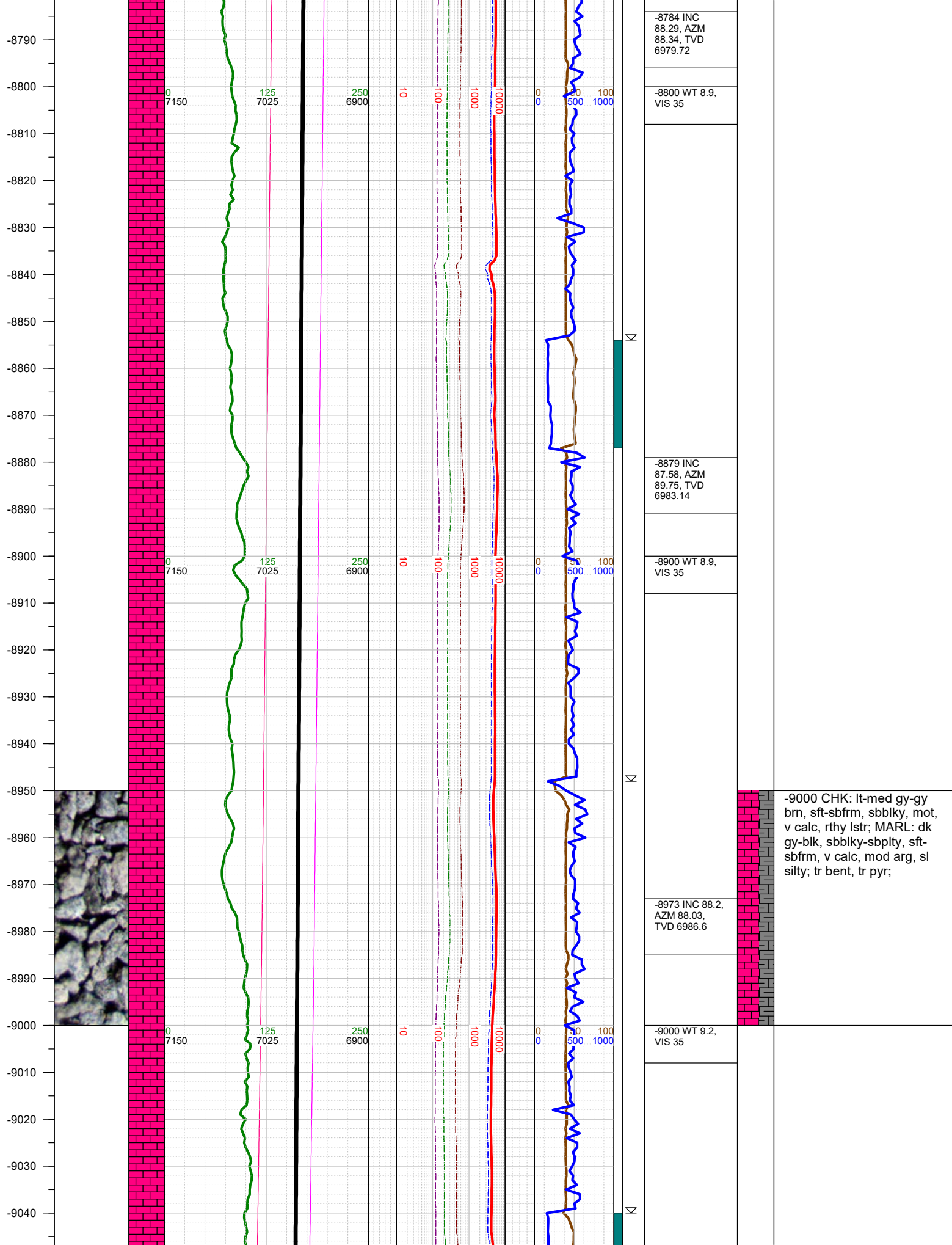
-8595 INC
87.89, AZM
88.42, TVD
6972.94

-8610 WT 8.9,
VIS 35

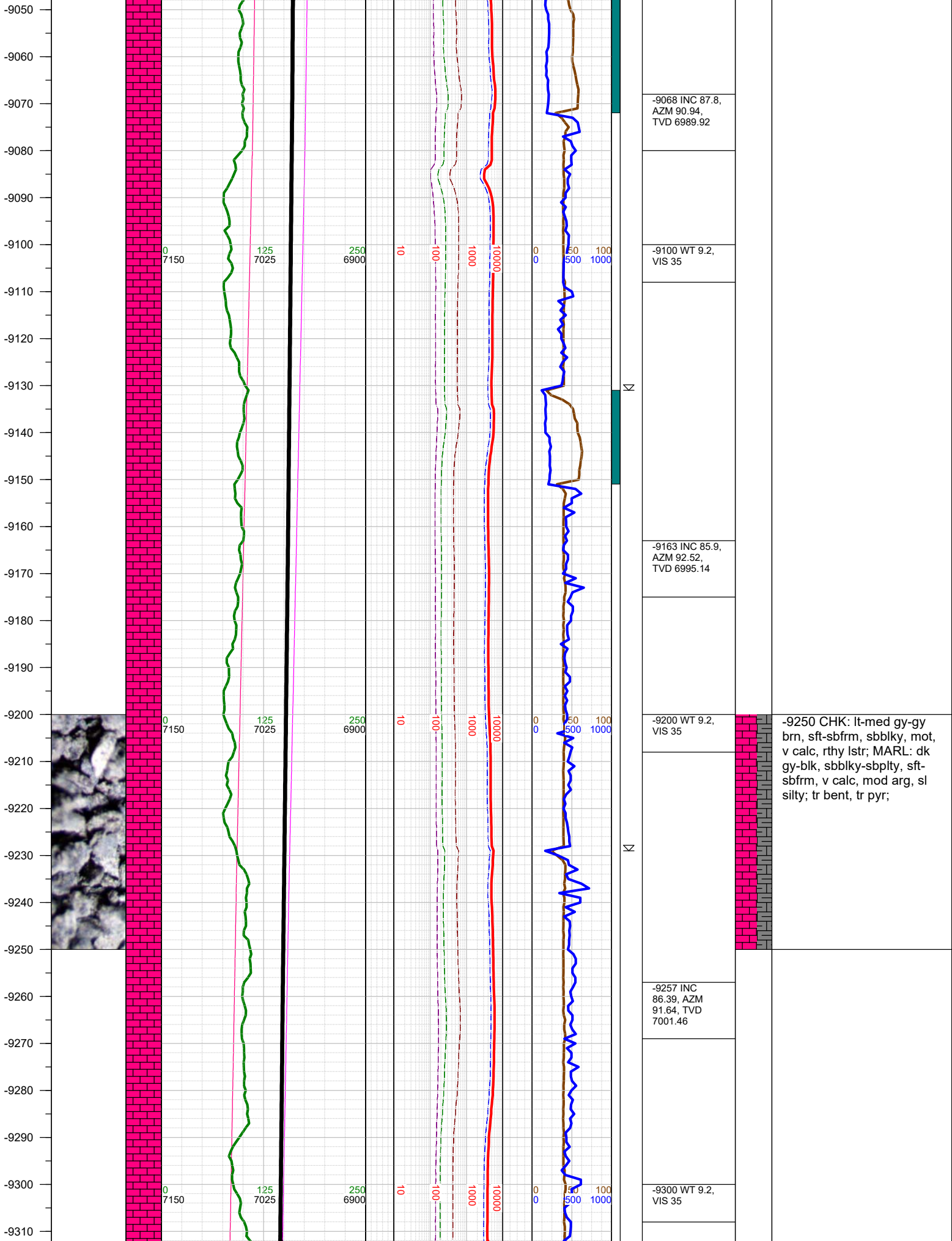
-8690 INC 87.8,
AZM 88.42,
TVD 6976.51

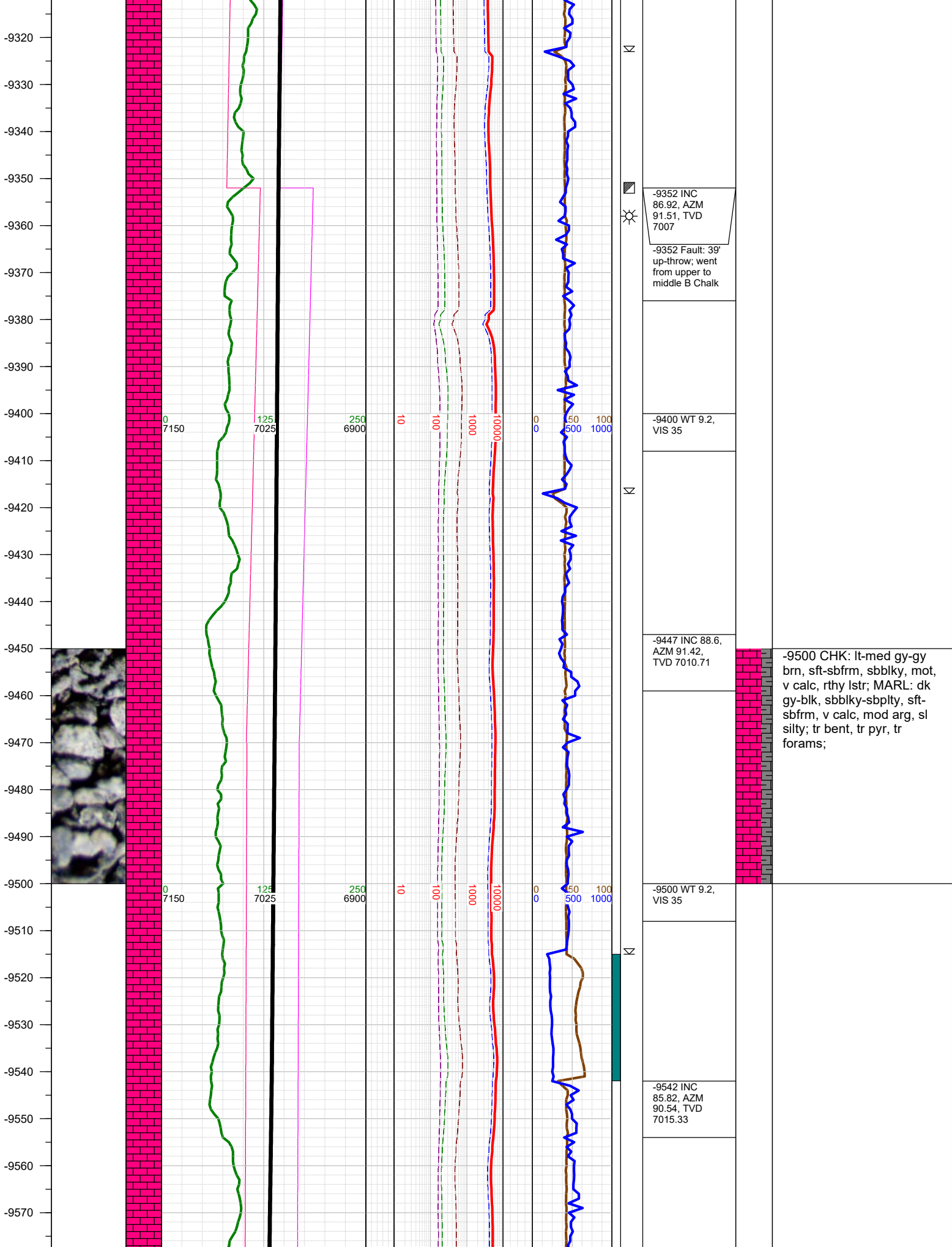
-8710 WT 8.9,
VIS 35

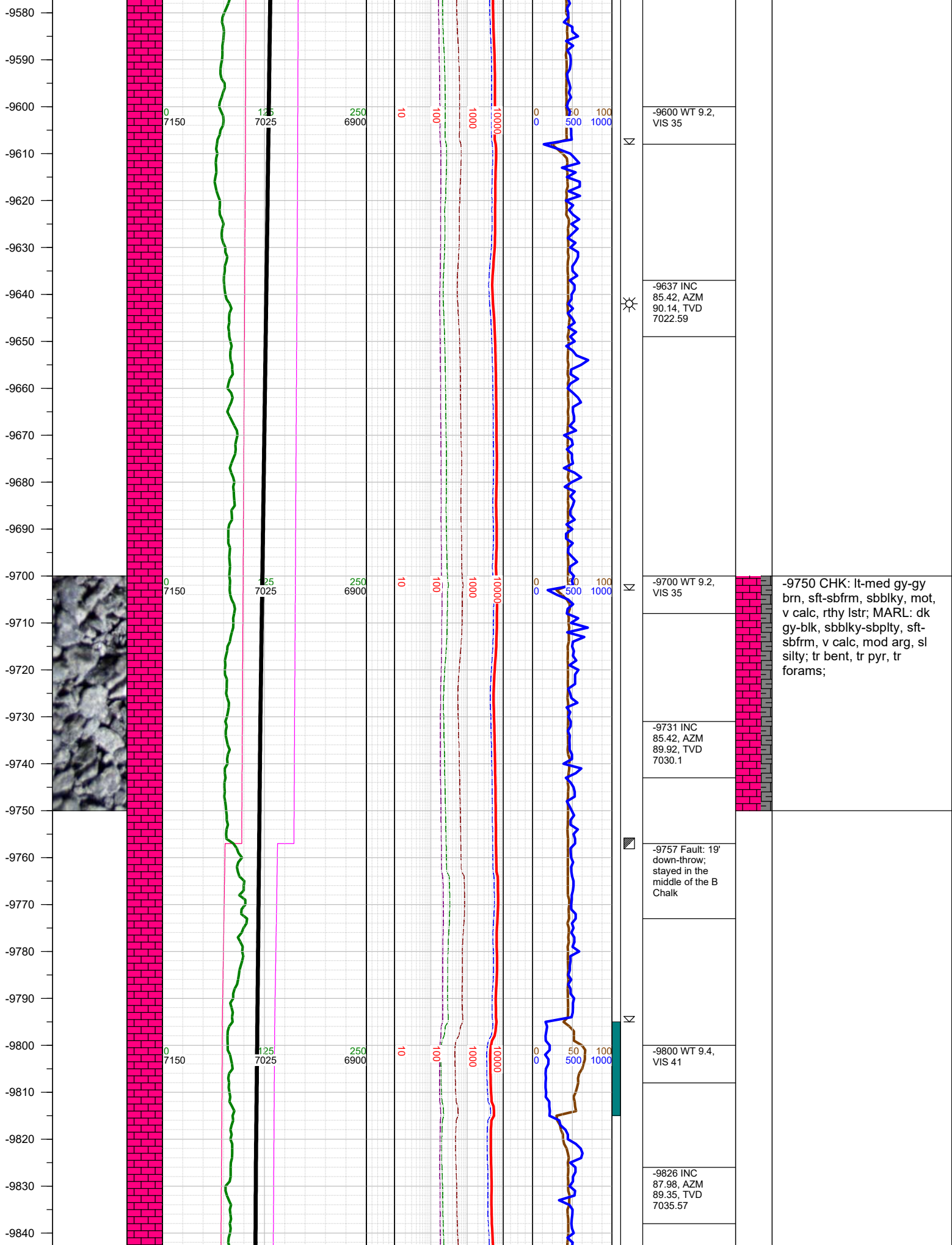
-8750 CHK: lt-med gy-gy
brn, sft-sbfrm, sbblky, mot,
v calc, rthy lstr; MARL: dk
gy-blk, sbblky-sbplty, sft-
sbfrm, v calc, mod arg, sl
silty; tr bent, tr pyr;

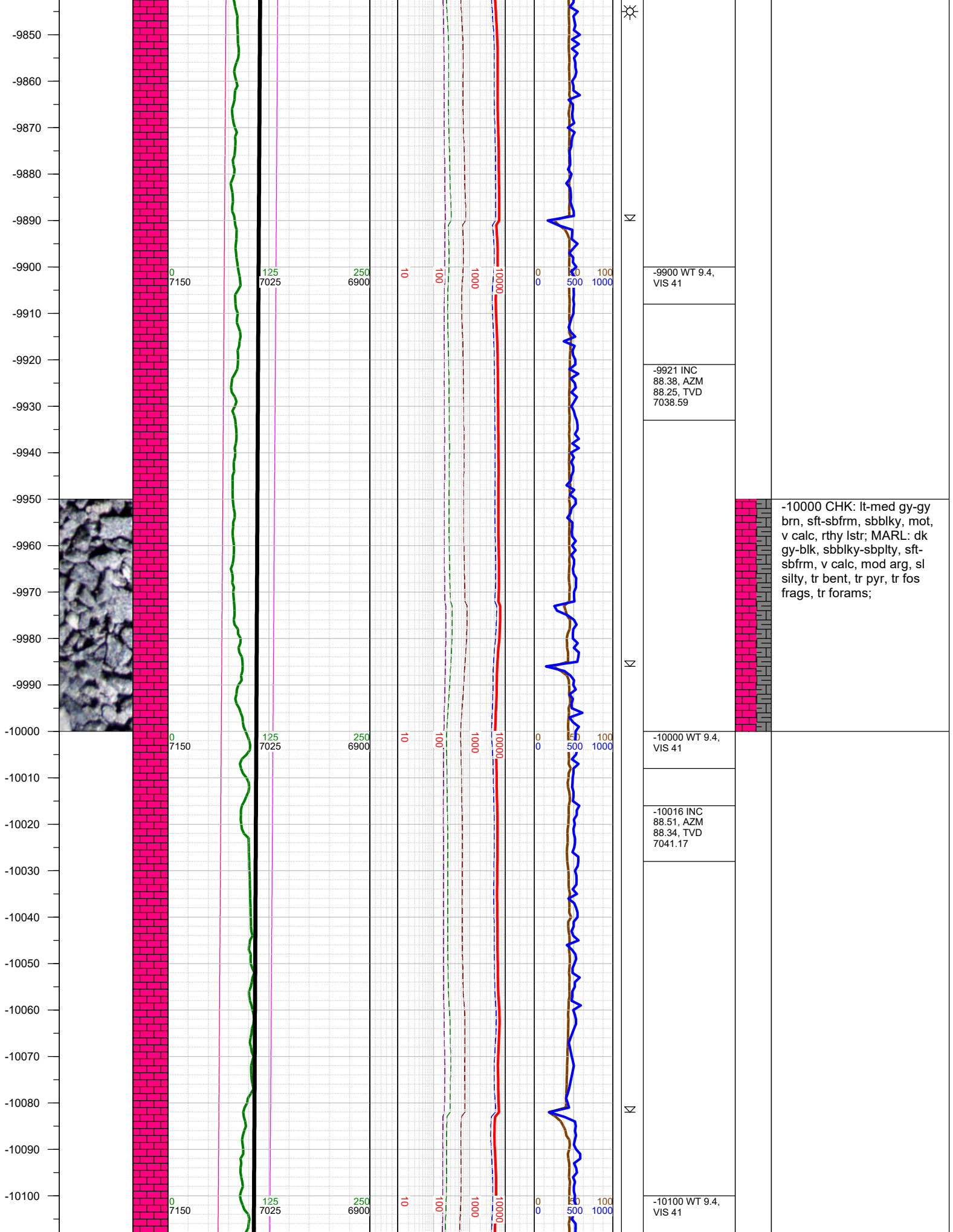


-9000 CHK: lt-med gy-gy
brn, sft-sbfrm, sbblky, mot,
v calc, rthy lstr; MARL: dk
gy-blk, sbblky-sbpty, sft-
sbfrm, v calc, mod arg, sl
silty; tr bent, tr pyr;

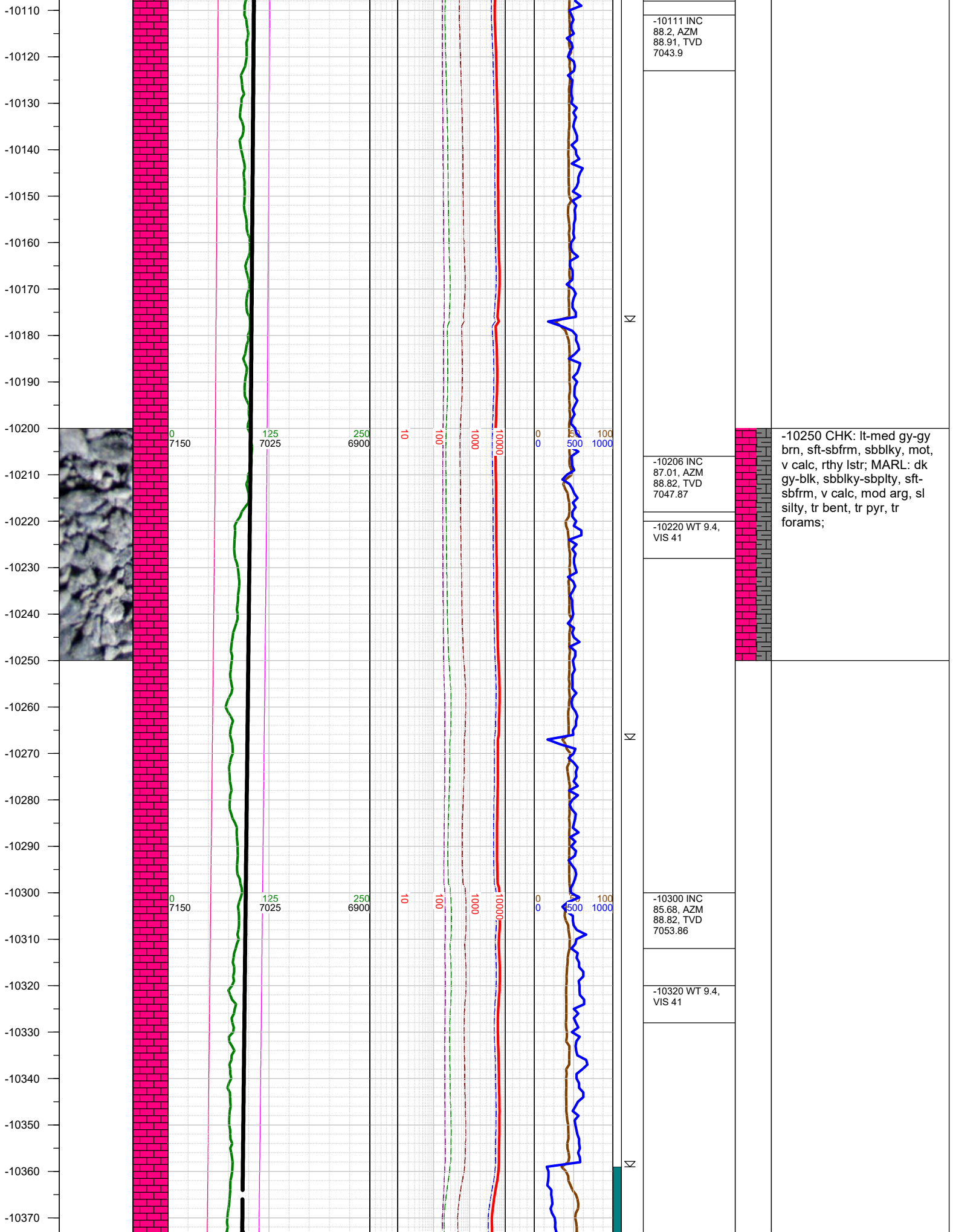




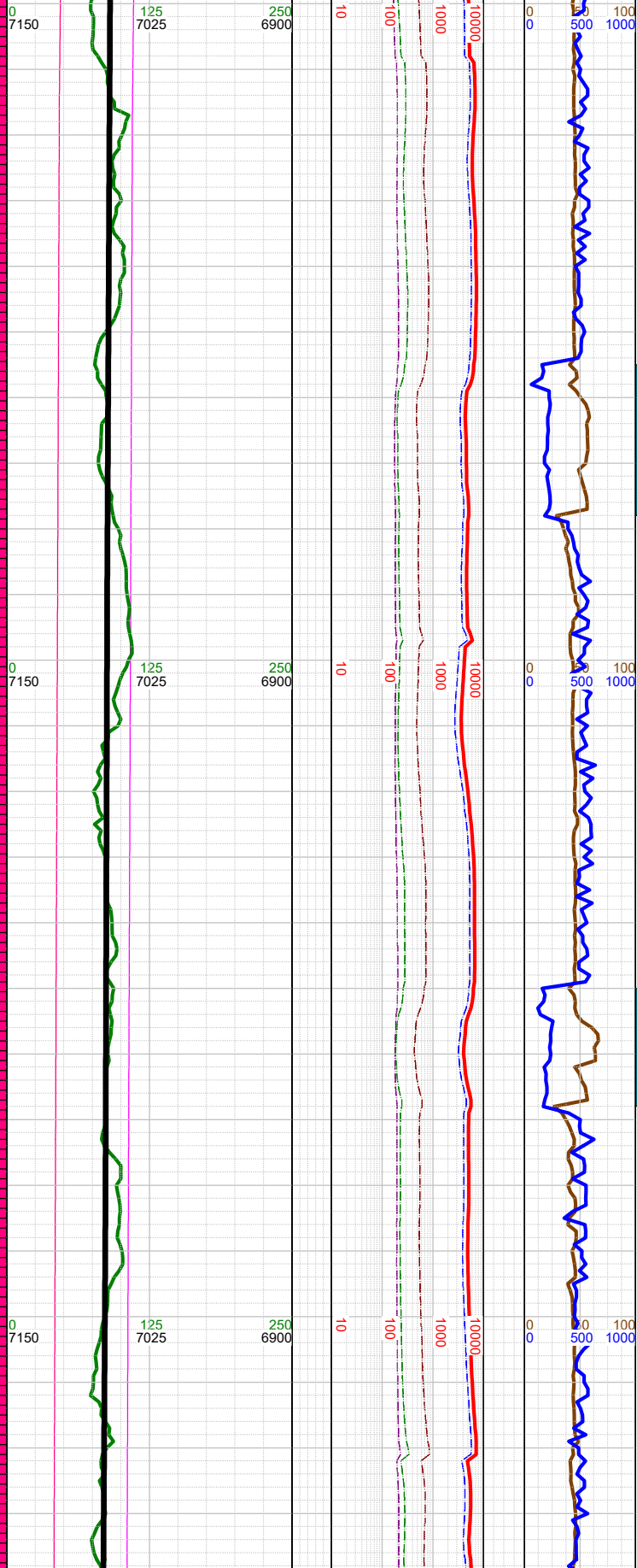
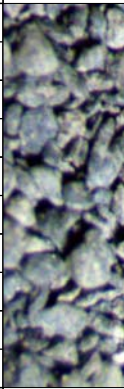




-10000 CHK: lt-med gy-gy
brn, sft-sbfrm, sbblky, mot,
v calc, rthy lstr; MARL: dk
gy-blk, sbblky-sbplty, sft-
sbfrm, v calc, mod arg, sl
silty, tr bent, tr pyr, tr fos
frags, tr forams;



-10380
-10390
-10400
-10410
-10420
-10430
-10440
-10450
-10460
-10470
-10480
-10490
-10500
-10510
-10520
-10530
-10540
-10550
-10560
-10570
-10580
-10590
-10600
-10610
-10620
-10630



-10395 INC
87.5, AZM
87.72, TVD
7059.51

-10410 WT 9.4,
VIS 41

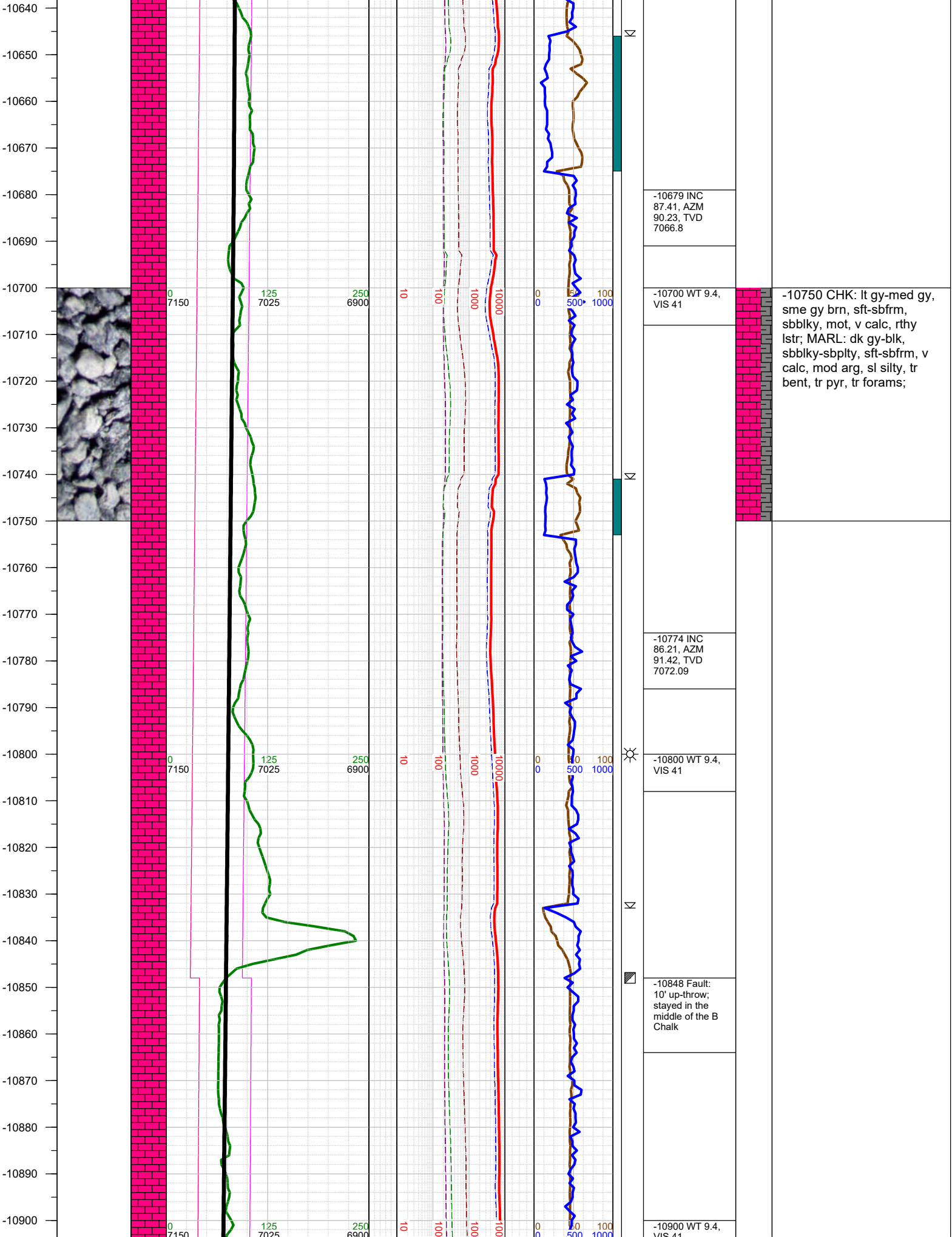
-10489 INC
89.31, AZM
89.22, TVD
7062.13

-10510 WT 9.4,
VIS 41

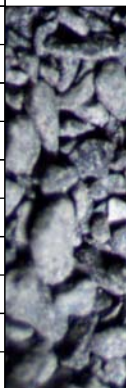
-10584 INC
88.82, AZM
90.01, TVD
7063.68

-10600 WT 9.4,
VIS 41

-10500 CHK: lt gy-med gy,
sme gy brn, sft-sbfrm,
sbbly, mot, v calc, rthy
lstr; MARL: dk gy-blk,
sbbly-sbply, sft-sbfrm, v
calc, mod arg, sl silty, tr
bent, tr pyr, tr-mod forams;



-10910
-10920
-10930
-10940
-10950
-10960
-10970
-10980
-10990
-11000
-11010
-11020
-11030
-11040
-11050
-11060
-11070
-11080
-11090
-11100
-11110
-11120
-11130
-11140
-11150
-11160



0
7150

125
7025

250
6900

10

100

1000

10000

0
0

50
500

100
1000

Σ

Σ

Σ

-10963 INC
87.1, AZM 89,
TVD 7083.12

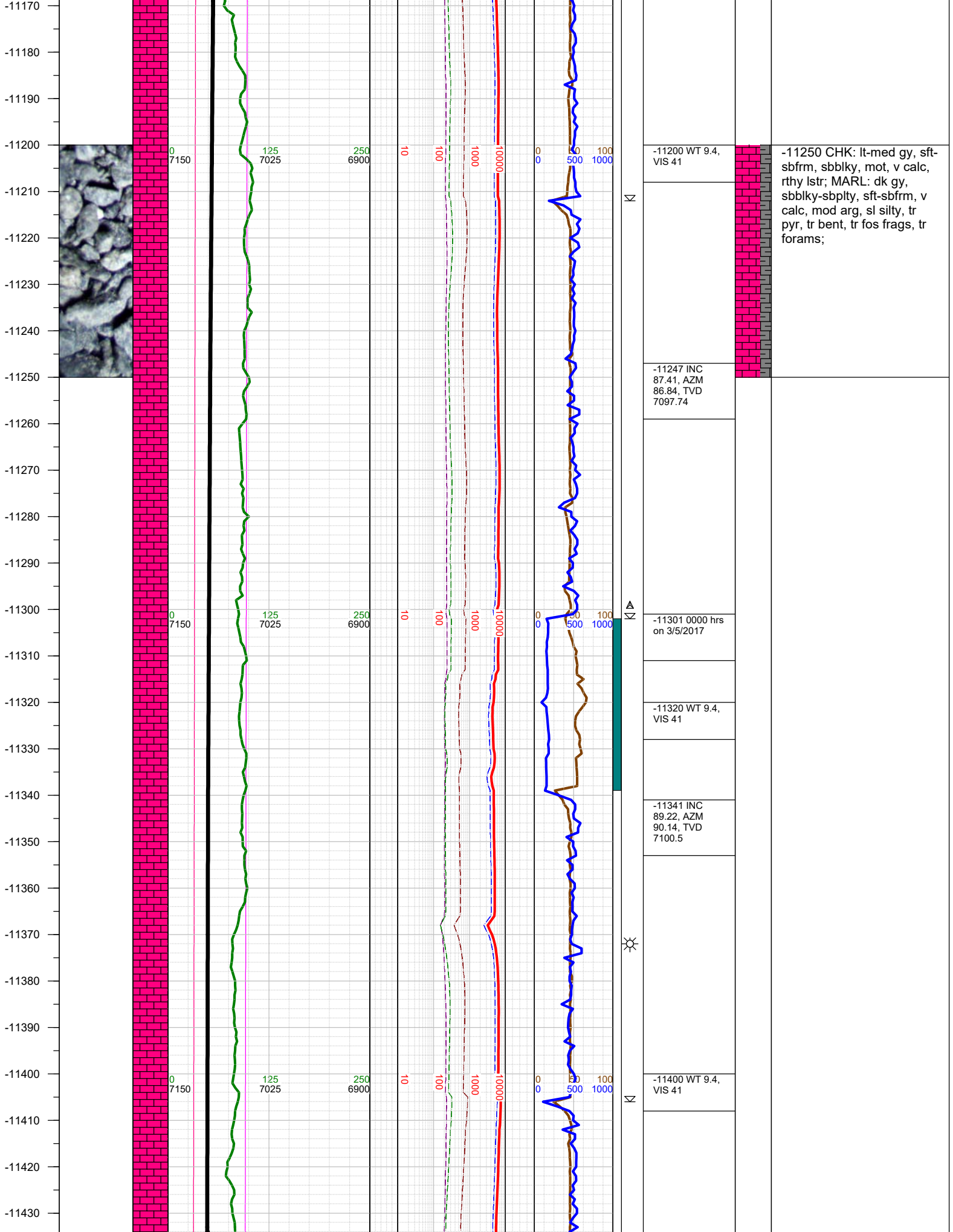
-11000 WT 9.4,
VIS 41

-11057 INC
86.39, AZM
89.04, TVD
7088.46

-11100 WT 9.4,
VIS 41

-11152 INC
87.5, AZM
88.82, TVD
7093.52

-11000 CHK: lt gy-med gy,
sft-sbfrm, sbblky, mot, v
calc, rthy lstr; MARL: dk
gy-blk, sbblky-sbplty, sft-
sbfrm, v calc, mod arg, sl
silty, tr pyr, tr-mod bent, tr
forams;



TOTAL DEPTH = 11670'

Thank you for using Earth Science Agency