

HALLIBURTON

iCem[®] Service

EXTRACTION OIL & GAS

United States of America

Kiteley #1

Extraction - Kiteley #1 - Surface Casing

Job Date: Sunday, January 29, 2017

Sincerely,
Derek Trier

Legal Notice

Disclaimer:

All information in this report is provided subject to the terms and conditions which govern the services provided by Halliburton. Halliburton personnel use their best efforts in gathering information and their best judgment in interpreting it, but any interpretation, research, analysis or recommendation furnished by Halliburton are opinions based upon inferences from measurements and empirical relationships and assumptions, which inferences and empirical relationships and assumptions are not infallible, and with respect to which professionals in the industry may differ. Accordingly, HALLIBURTON IS UNABLE TO GUARANTEE THE ACCURACY OF ANY CHART INTERPRETATION, RESEARCH ANALYSIS, OR JOB RECOMMENDATION and any interpretation or recommendation is not for use of or reliance upon by any third party. The customer has full responsibility for any of its decisions which are based on the information provided in this report.

Table of Contents

1.0 Cementing Job Summary 4

 1.1 Executive Summary4

2.0 Real-Time Job Summary 7

 2.1 Job Event Log7

3.0 Attachments..... 9

 3.1 Case 1-Custom Results.png.....9

 3.2 Case 1-Custom Results (1).png10

1.0 Cementing Job Summary

1.1 Executive Summary

Halliburton appreciates the opportunity to perform the cementing services on the **Kiteley 1** cement **Surface** casing job. A pre-job safety meeting was held before the job where details of the job were discussed, potential safety hazards were reviewed, and environmental compliance procedures were outlined.

Approximately, 32bbl of cement returned to surface.

Halliburton maintains a continuous quality improvement process and appreciates any comments or suggestions that you may have. Halliburton again thanks you for the opportunity to perform service work on this well. We hope to be your solutions provider for future projects.

Respectfully,

Halliburton [Ft. Lupton]

HALLIBURTON

Cementing Job Summary

The Road to Excellence Starts with Safety

Sold To #: 369404	Ship To #: 3770371	Quote #:	Sales Order #: 0903799763							
Customer: EXTRACTION OIL & GAS -		Customer Rep: Sean								
Well Name: KITELEY	Well #: 1	API/UWI #: 05-123-43918-00								
Field: WATTENBERG	City (SAP): LONGMONT	County/Parish: WELD	State: COLORADO							
Legal Description: NW SW-21-3N-68W-1527FSL-513FWL										
Contractor:		Rig/Platform Name/Num: Spud Rig								
Job BOM: 7521										
Well Type: HORIZONTAL OIL										
Sales Person: HALAMERICA\HX38199		Srv Supervisor: Justin Wheeler								
Job										
Formation Name										
Formation Depth (MD)	Top	Bottom								
Form Type	BHST									
Job depth MD	1555ft	Job Depth TVD								
Water Depth		Wk Ht Above Floor	3'							
Perforation Depth (MD)	From	To								
Well Data										
Description	New / Used	Size in	ID in	Weight lbm/ft	Thread	Grade	Top MD ft	Bottom MD ft	Top TVD ft	Bottom TVD ft
Casing		9.625	8.921	36			0	1555	0	1555
Open Hole Section			13.5				0	1555	0	1555
Tools and Accessories										
Type	Size in	Qty	Make	Depth ft	Type	Size in	Qty	Make		
Float Shoe	9.625	1		1555'	Top Plug	9.625	1	HES		
Float Collar	9.625	1		1513'	Bottom Plug					
					SSR plug set					
					Plug Container					
					Centralizers					
Miscellaneous Materials										
Gelling Agt		Conc		Surfactant		Conc	Acid Type		Qty	Conc
Treatment Fld		Conc		Inhibitor		Conc	Sand Type		Size	Qty
Fluid Data										
Stage/Plug #: 1										
Fluid #	Stage Type	Fluid Name	Qty	Qty UoM	Mixing Density lbm/gal	Yield ft ³ /sack	Mix Fluid Gal	Rate bbl/min	Total Mix Fluid Gal	
1	Red Dye Spacer	Red Dye Spacer	10	bbl	8.33					
Fluid #	Stage Type	Fluid Name	Qty	Qty UoM	Mixing Density lbm/gal	Yield ft ³ /sack	Mix Fluid Gal	Rate bbl/min	Total Mix Fluid Gal	
2	SwiftCem	SWIFTCM (TM) SYSTEM	550	sack	13.5	1.74		5	9.2	

last updated on 2/5/2017 12:55:25 PM

Page 1 of 2

iCem® Service

(v. 4.3.44)

Created: Sunday, February 05, 2017

HALLIBURTON

Cementing Job Summary

9.20 Gal		FRESH WATER							
Fluid #	Stage Type	Fluid Name	Qty	Qty UoM	Mixing Density lbm/gal	Yield ft3/sack	Mix Fluid Gal	Rate bbl/min	Total Mix Fluid Gal
3	Fresh Water	Fresh Water	117	bbl	8.33				
Cement Left In Pipe		Amount	42 ft		Reason		Shoe Joint		
Comment 32 bbls Cement to Surface									

2.0 Real-Time Job Summary

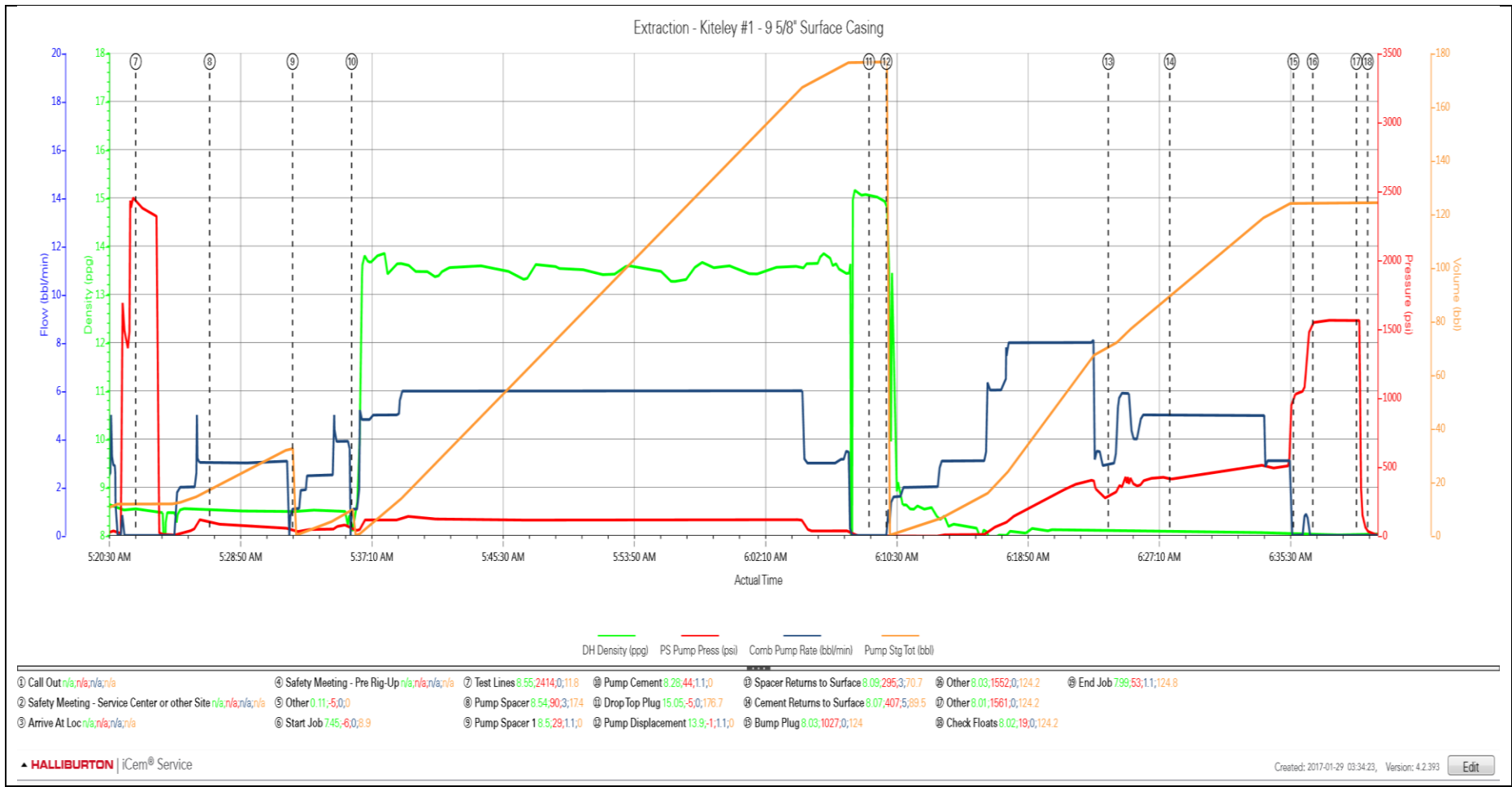
2.1 Job Event Log

Type	Seq. No.	Activity	Graph Label	Date	Time	Source	PS Pump Press (psi)	DH Density (ppg)	Comb Pump Rate (bbl/min)	Pump Stg Tot (bbl)	Comments
Event	1	Call Out	Call Out	1/29/2017	23:15:00	USER					Called Out at 2315
Event	2	Safety Meeting - Service Center or other Site	Safety Meeting - Service Center or other Site	1/29/2017	02:30:00	USER					Journey Management Meeting with Crew Prior to Departing Service Center
Event	3	Arrive At Loc	Arrive At Loc	1/29/2017	03:00:00	USER					Arrive on Location @ 0300. Requested O/L @ 0400. Rig Running Casing
Event	4	Safety Meeting - Pre Rig-Up	Safety Meeting - Pre Rig-Up	1/29/2017	03:10:00	USER					Pre Rig-Up Safety Meeting with HES Crew Prior to Spotting Trucks
Event	5	Other	Other	1/29/2017	03:52:53	USER	-5.00	0.11	0.00	0.00	1555' - 9 5/8" Casing, 42' Shoe. 13 1/2" OH. Water Provided by Rig, Tested as follows: Chlorides - 0, Sulfates <200, PH 7.5, 65 Deg.
Event	6	Start Job	Start Job	1/29/2017	05:19:43	COM5	-6.00	7.74	0.00	8.90	
Event	7	Test Lines	Test Lines	1/29/2017	05:22:17	COM5	2417.00	8.55	0.00	11.80	Pressure Test Lines to 2414 PSI
Event	8	Pump Spacer	Pump Spacer	1/29/2017	05:27:00	USER	90.00	8.54	3.00	17.40	Pump 20 bbls Fresh Water Spacer
Event	9	Pump Spacer 1	Pump Spacer 1	1/29/2017	05:32:15	COM5	29.00	8.50	1.10	32.50	Pump 10 bbls Dyed Water Spacer
Event	10	Pump Cement	Pump Cement	1/29/2017	05:36:00	COM5	47.00	8.12	1.10	9.70	Mix and Pump 170.4 bbls (550 sks) SwiftCem Cement @ 13.5 lb/gal (Density Verified by Pressurized Scales)
Event	11	Drop Top Plug	Drop Top Plug	1/29/2017	06:08:51	COM5	-5.00	15.05	0.00	176.70	Shut-Down, Drop Top Plug. (Witnessed by Customer Rep.)
Event	12	Pump Displacement	Pump Displacement	1/29/2017	06:09:57	COM5	-2.00	14.51	1.10	176.80	Pump Fresh Water Displacement (Wash-up on top of plug)
Event	13	Spacer Returns to Surface	Spacer Returns to Surface	1/29/2017	06:24:03	USER	298.00	8.09	3.00	70.60	Dyed Water Returns to Surface
Event	14	Cement Returns to	Cement Returns to	1/29/2017	06:27:57	USER	408.00	8.07	5.00	89.50	32 bbls Cement Returns to Surface

		Surface	Surface									
Event	15	Bump Plug	Bump Plug	1/29/2017	06:35:48	COM5	1023.00	8.03	0.00	124.00	Bump Plug @ 117 bbls Away@ 1027 PSI. 500 PSI Final Pump Pressure	
Event	16	Other	Other	1/29/2017	06:37:02	COM5	1551.00	8.03	0.00	124.20	Pressure up Casing to 1528 PSI. Monitor for Casing Test	
Event	17	Other	Other	1/29/2017	06:39:48	COM5	1561.00	8.01	0.00	124.20	Casing Pressure 1561 PSI	
Event	18	Check Floats	Check Floats	1/29/2017	06:40:31	USER	20.00	8.02	0.00	124.20	Check Floats, Floats Holding Returned 2 bbls back to truck	
Event	19	End Job	End Job	1/29/2017	06:48:35	COM5	53.00	7.99	1.10	124.80		

3.0 Attachments

3.1 Case 1-Custom Results.png



3.2 Case 1-Custom Results (1).png

