

HALLIBURTON

iCem[®] Service

BP AMERICA PROD CO - NAG - EBUS

United States of America

For: David Warren

Date: Tuesday, January 17, 2017

Southern Ute BK2 Surface

Job Date: Sunday, January 15, 2017

Sincerely,

Jacob Ayers

Legal Notice

Disclaimer:

All information in this report is provided subject to the terms and conditions which govern the services provided by Halliburton. Halliburton personnel use their best efforts in gathering information and their best judgment in interpreting it, but any interpretation, research, analysis or recommendation furnished by Halliburton are opinions based upon inferences from measurements and empirical relationships and assumptions, which inferences and empirical relationships and assumptions are not infallible, and with respect to which professionals in the industry may differ. Accordingly, HALLIBURTON IS UNABLE TO GUARANTEE THE ACCURACY OF ANY CHART INTERPRETATION, RESEARCH ANALYSIS, OR JOB RECOMMENDATION and any interpretation or recommendation is not for use of or reliance upon by any third party. The customer has full responsibility for any of its decisions which are based on the information provided in this report.

Table of Contents

1.0 Real-Time Job Summary 4

1.1 Job Event Log4

2.0 Attachments..... 5

2.1 Southern Ute BK2 Surface -Chart.png.....5

2.2 Southern Ute BK2 Surface -Events.png.....6

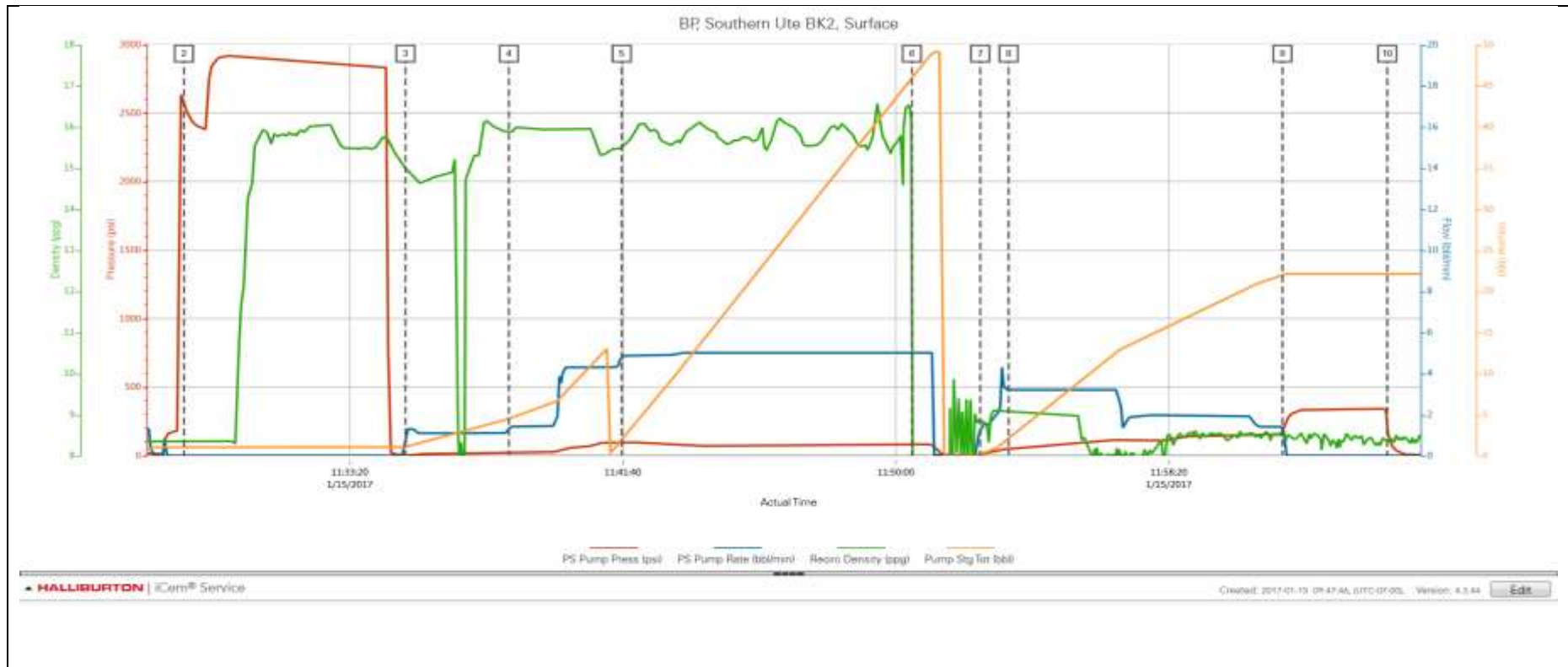
1.0 Real-Time Job Summary

1.1 Job Event Log

Type	Seq. No.	Activity	Graph Label	Date	Time	Source	PS Pump Press (psi)	PS Pump Rate (bbl/min)	Recirc Density (ppg)	Pump Stg Tot (bbl)	Comments
Event	1	Depart Shop for Location	Depart Yard for Location	1/15/2017	08:00:26	USER					departed from yard @ 800
Event	2	Job Called In	Job Called out	1/15/2017	09:51:24	USER					job called out @ 0500
Event	3	Arrive At Loc	Arrive at Location from Other Job or Site	1/15/2017	10:00:44	USER					requested on location time was 1000
Event	4	Start Job	Start Job	1/15/2017	11:25:59	COM5	-1.00	0.00	8.24	0.00	
Event	5	Pressure Test	Pressure Test	1/15/2017	11:28:16	USER	2576.00	0.00	8.35	1.00	test pumps and lines to 2600
Event	6	Pump Spacer	Pump Spacer	1/15/2017	11:35:02	USER	1.00	1.30	15.00	1.10	10bbl water spacer
Event	7	Check Weight	Check Weight	1/15/2017	11:38:11	COM5	19.00	1.50	15.87	4.50	checked weight and auto called down hole
Event	8	Pump Cement	Pump Cement	1/15/2017	11:41:38	USER	91.00	4.80	15.48	1.80	250sks 1.18 yield 5.24 wrq = 52.5bbl cmt @15.8#
Event	9	Drop Plug	Drop Plug	1/15/2017	11:50:29	USER	79.00	5.00	16.04	45.90	shut down dropped plug
Event	10	Pump Displacement	Pump Displacement	1/15/2017	11:52:34	USER	3.00	1.10	8.80	0.10	calculated 22 bbl to land plug
Event	11	Cement Returns to Surface	Cement Returns to Surface	1/15/2017	11:53:26	USER	47.00	3.20	9.08	2.00	calculated 22.7bbl cmt back 18 bbl actually returned to surface
Event	12	Bump Plug	Bump Plug	1/15/2017	12:01:48	USER	157.00	1.40	8.52	22.00	calculated 134psi to land plug actually landed @ 170psi
Event	13	Check Floats	Check Floats	1/15/2017	12:05:00	USER	193.00	0.00	8.30	22.10	floats held 1/4 bbl back
Event	14	End Job	End Job	1/15/2017	12:43:40	COM5	-3.00	0.00	0.21	0.00	

2.0 Attachments

2.1 Southern Ute BK2 Surface -Chart.png



2.2 Southern Ute BK2 Surface -Events.png

