



RADIAL CEMENT BOND LOG

Company **Kerr McGee Oil & Gas**
Well **Bulthaup 24-6**
Field **Wattenberg**
County **Weld** State **Colorado**

Location: API #: 05-123-26890-0000
SE/NE
Other Services
NONE

Permanent Datum G.L. = 4987'
Log Measured From K.B. = 14'
Drilling Measured From K.B. = 4987'

Date 4-18-2017

Run Number 1
Depth Driller 7965'
Depth Logger 3005'
Bottom Logged Interval 3005'
Top Log Interval SURFACE
Open Hole Size 4.5"
Type Fluid WATER
Density / Viscosity ~ 8.3 #
Max. Recorded Temp. 146 DEGREE F.
Estimated Cement Top SEE LOG.
Time Well Ready 14:15
Time Logger on Bottom 14:45
Equipment Number 204
Location WINDSOR, CO
Recorded By C. JONES
Witnessed By D. GOMEZ

Borehole Record
Run Number Bit From To Size Weight From To


Casing Record
Surface String 8.63" 24# 14' 685'
Prot. String 2.38" 4.7# 14' 7754'
Production String 4.5" 11.6# 14' 7949'
Liner

>>> Fold Here >>>

All interpretations are opinions based on inferences from electrical or other measurements and we cannot and do not guarantee the accuracy or correctness of any interpretation, and we shall not, except in the case of gross or willful negligence on our part, be liable or responsible for any loss, costs, damages, or expenses incurred or sustained by anyone resulting from any interpretation made by any of our officers, agents or employees. These interpretations are also subject to our general terms and conditions set out in our current Price Schedule.

Comments

FREE PIPE AMPLITUDE = 82 mV.
WELL LOGGED WITH 0 PSI ON CASING.
THANK YOU FOR CHOOSING CUTTERS WIRELINE SERVICE.

Sensor	Offset (ft)	Schematic	Description	Len (ft)	OD (in)	Wt (lb)
			1.4375CHD Titan Cable Head 1 7/16	1.00	1.44	10.00

WVF3FT	9.97		RBT-Probe (Pro101106) Probe 2.75" Radii Bond Tool	8.75	2.75	90.00
WVFCAL	9.97					
WVFS1	9.97					
WVFS2	9.97					
WVFS3	9.97					
WVFS4	9.97					
WVFS5	9.97					
WVFS6	9.97					
WVFS7	9.97					
WVFS8	9.97					
WVF5FT	8.97					
CCL	4.88					
DCCL	4.88					
GR	3.54		GR-Probe275dig (PRO120885) Probe Digital Gamma CCL	4.78	2.75	57.00
TEMP	0.08		TEMP-Probe (080510) Probe 1 3/8" Temp	1.00	1.38	4.00
Dataset: bulthaupt_24_6.db: field/well/run1/pass9.1 Total Length: 15.53 ft Total Weight: 161.00 lb O.D. 2.75 in						

Database File: bulthaup_24_6.db
 Dataset Pathname: pass9.1
 Presentation Format: rbl55
 Dataset Creation: Tue Apr 18 17:30:01 2017 by Calc 7.0 B1
 Charted by: Depth in Feet scaled 1:240

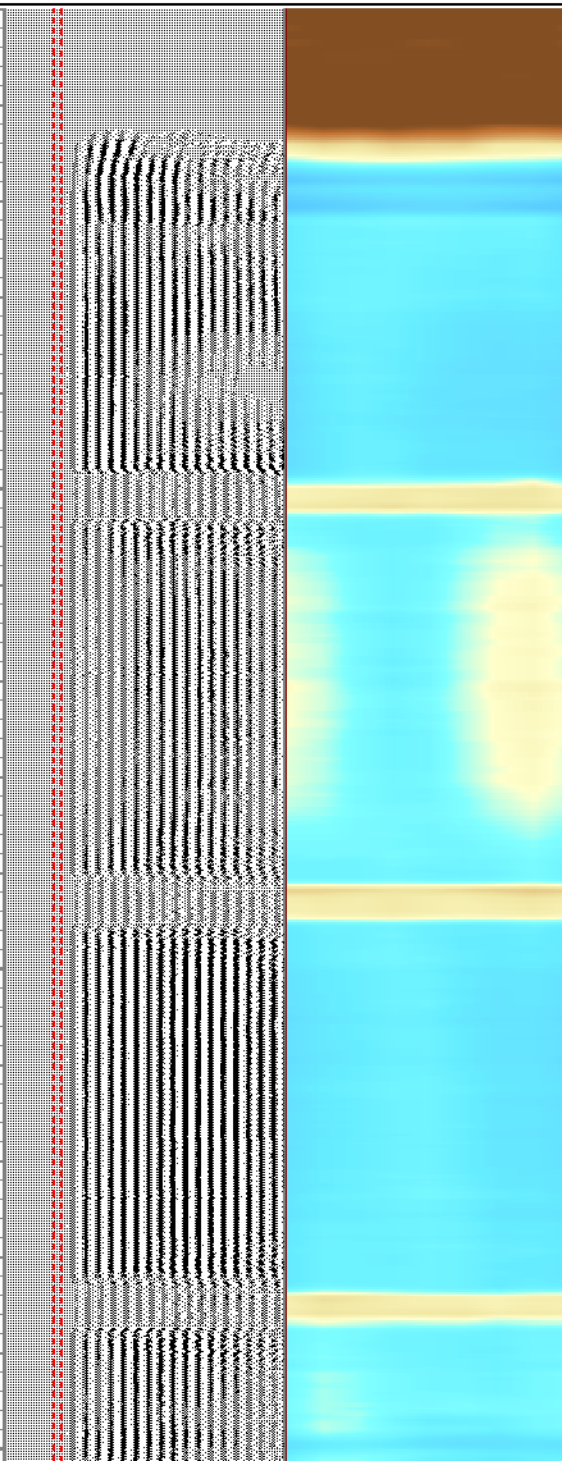
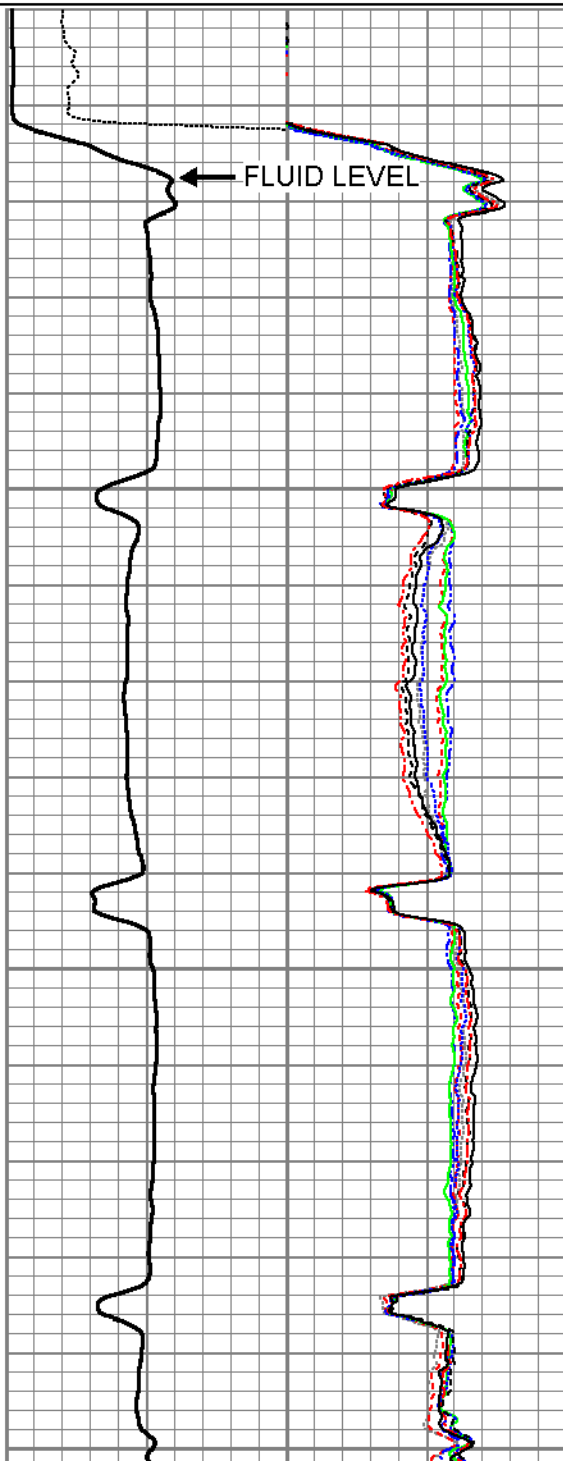
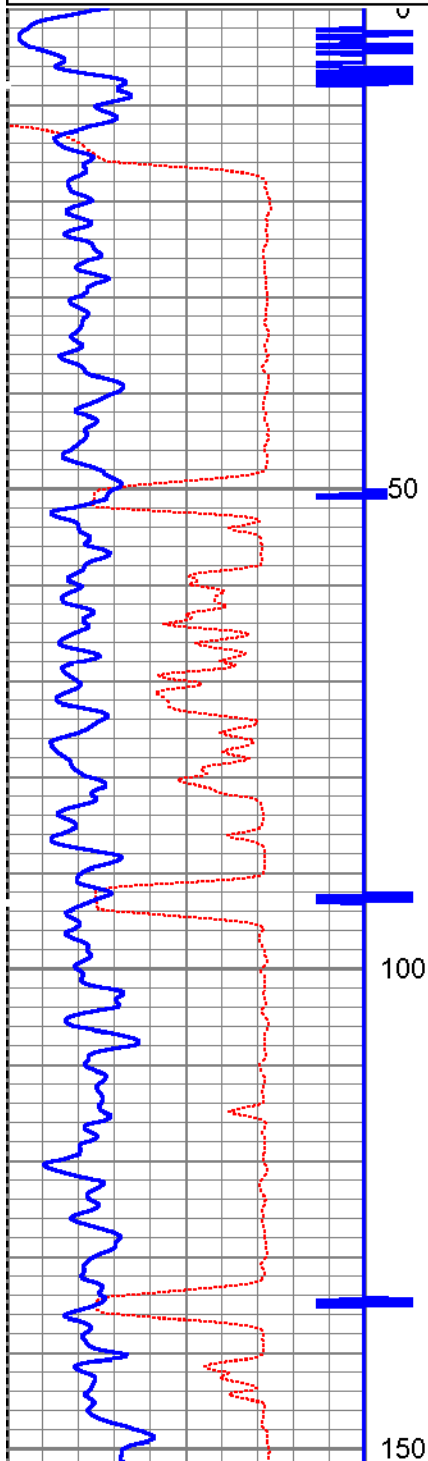
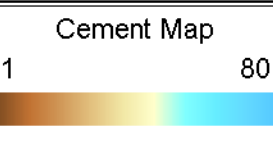
343	TT (usec)	243
0	GR (GAPI)	200
0	LTEN (lb)	4000

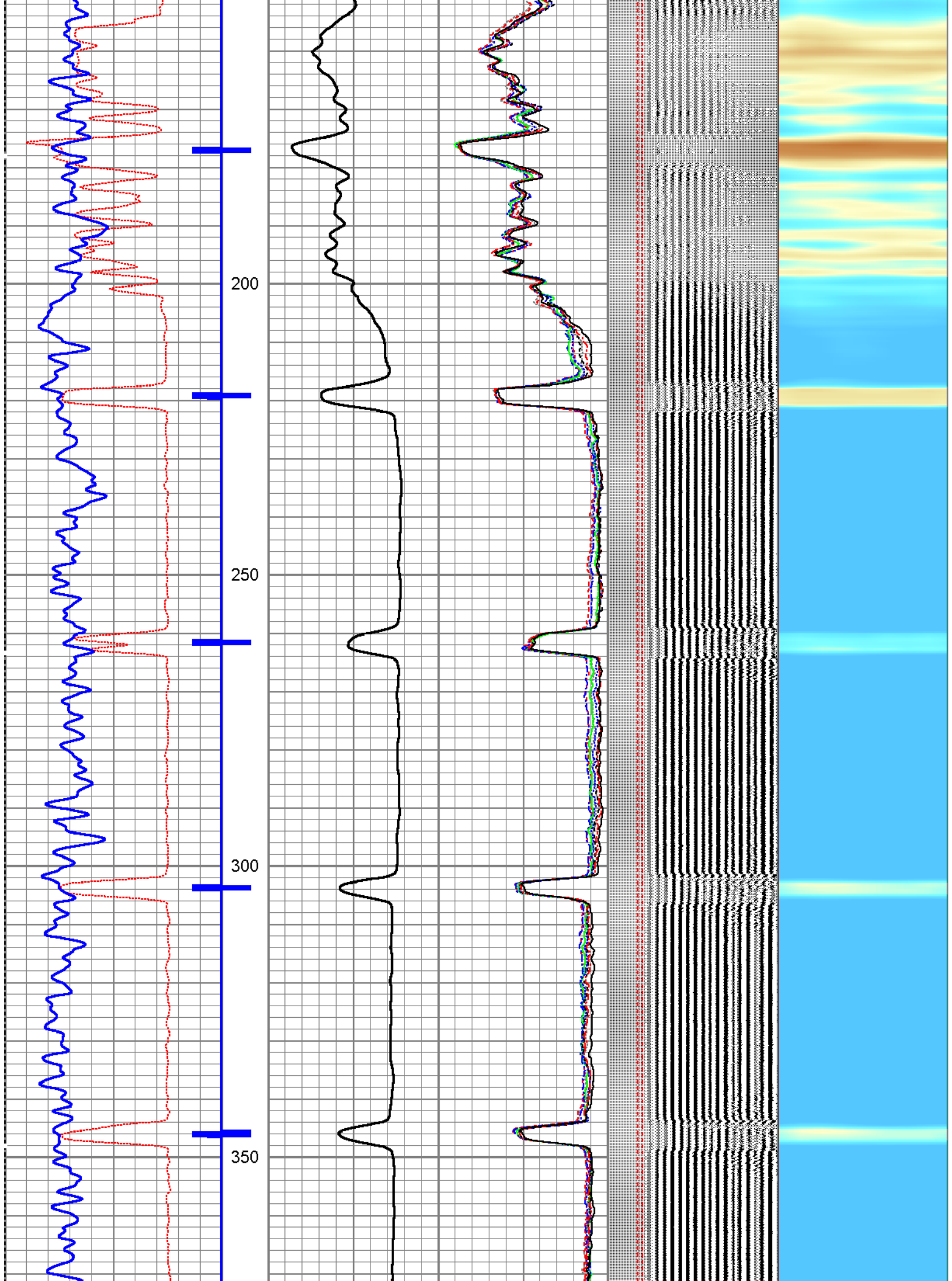
CCL

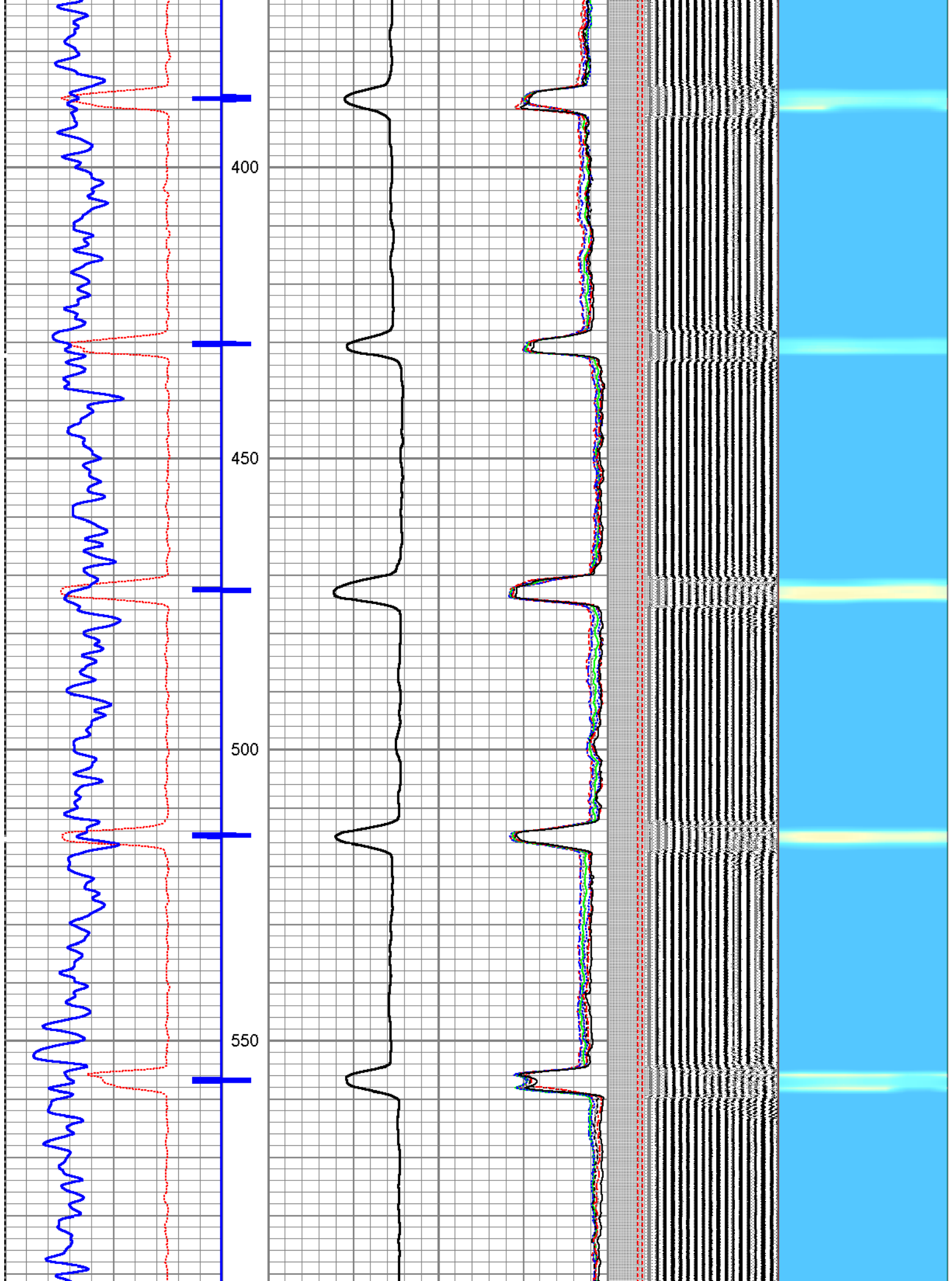
Amplitude		
0	(mV)	100
Amplified Amplitude		
0	(mV)	10

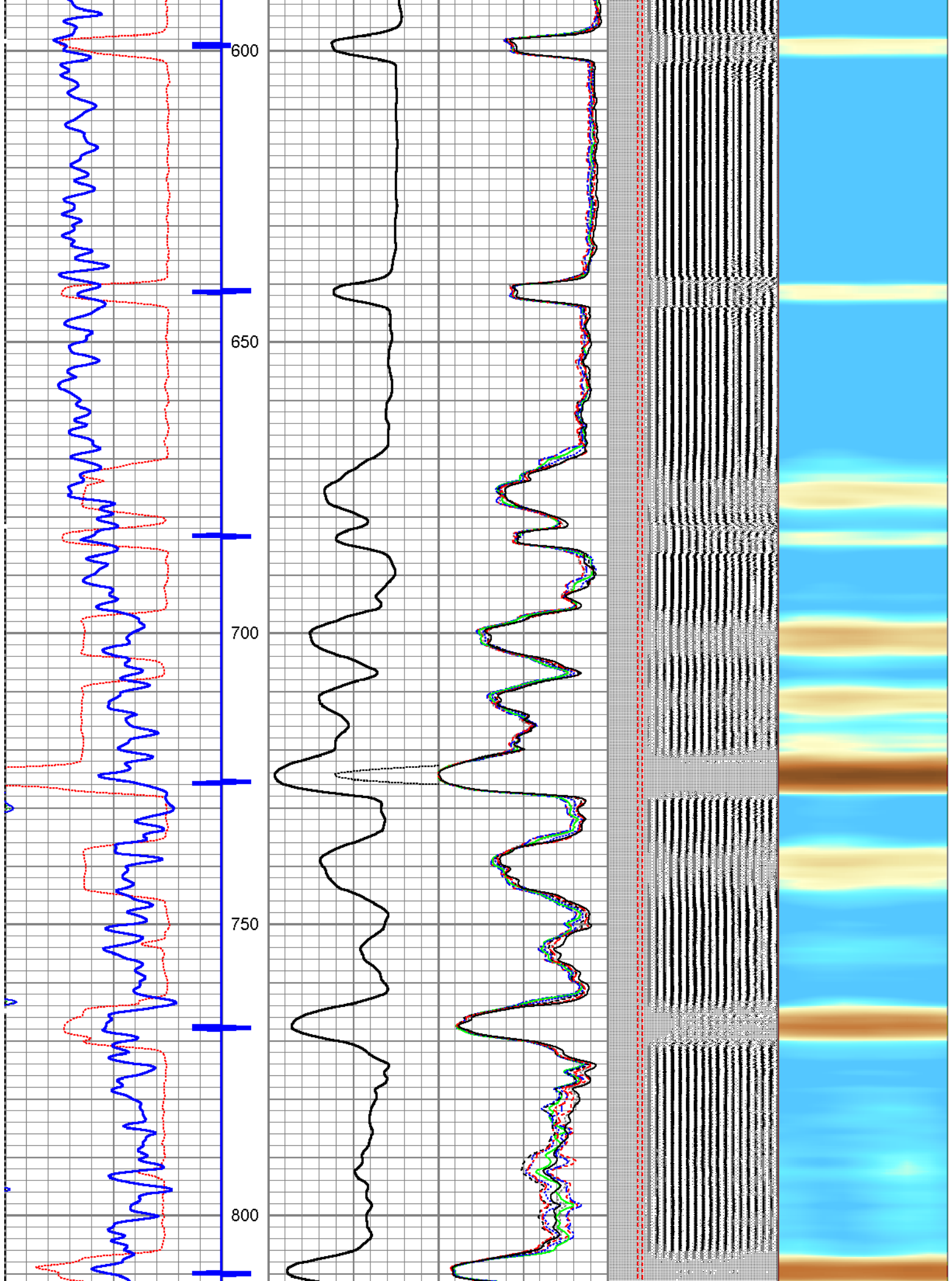
2	AMPS2	100
2	AMPS3	100
2	AMPS4	100
2	AMPS5	100
2	AMPS6	100
2	AMPS7	100
2	AMPS8	100
2	AMPS1	100

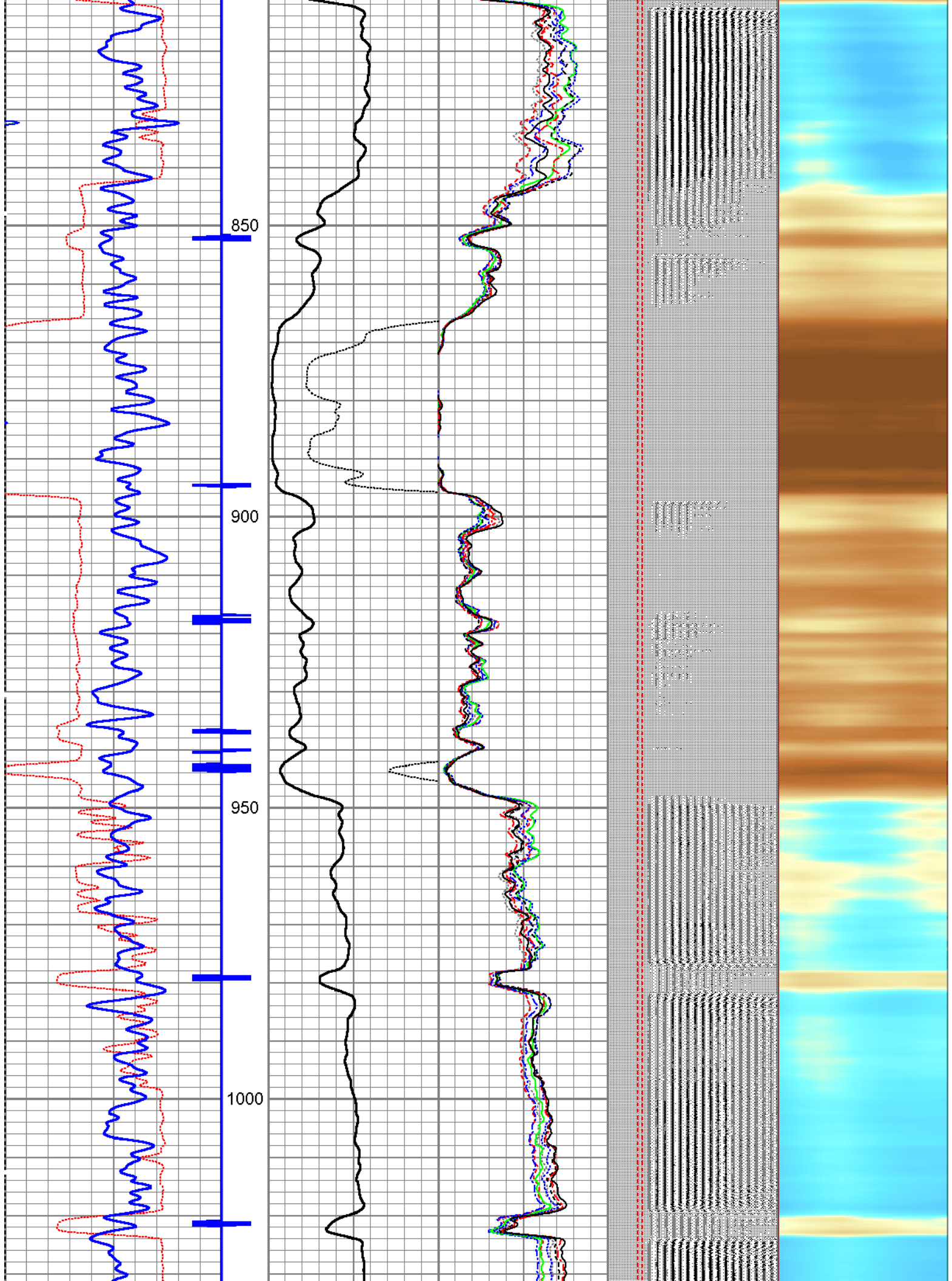
200	VDL	1200
Free Pipe Gate		

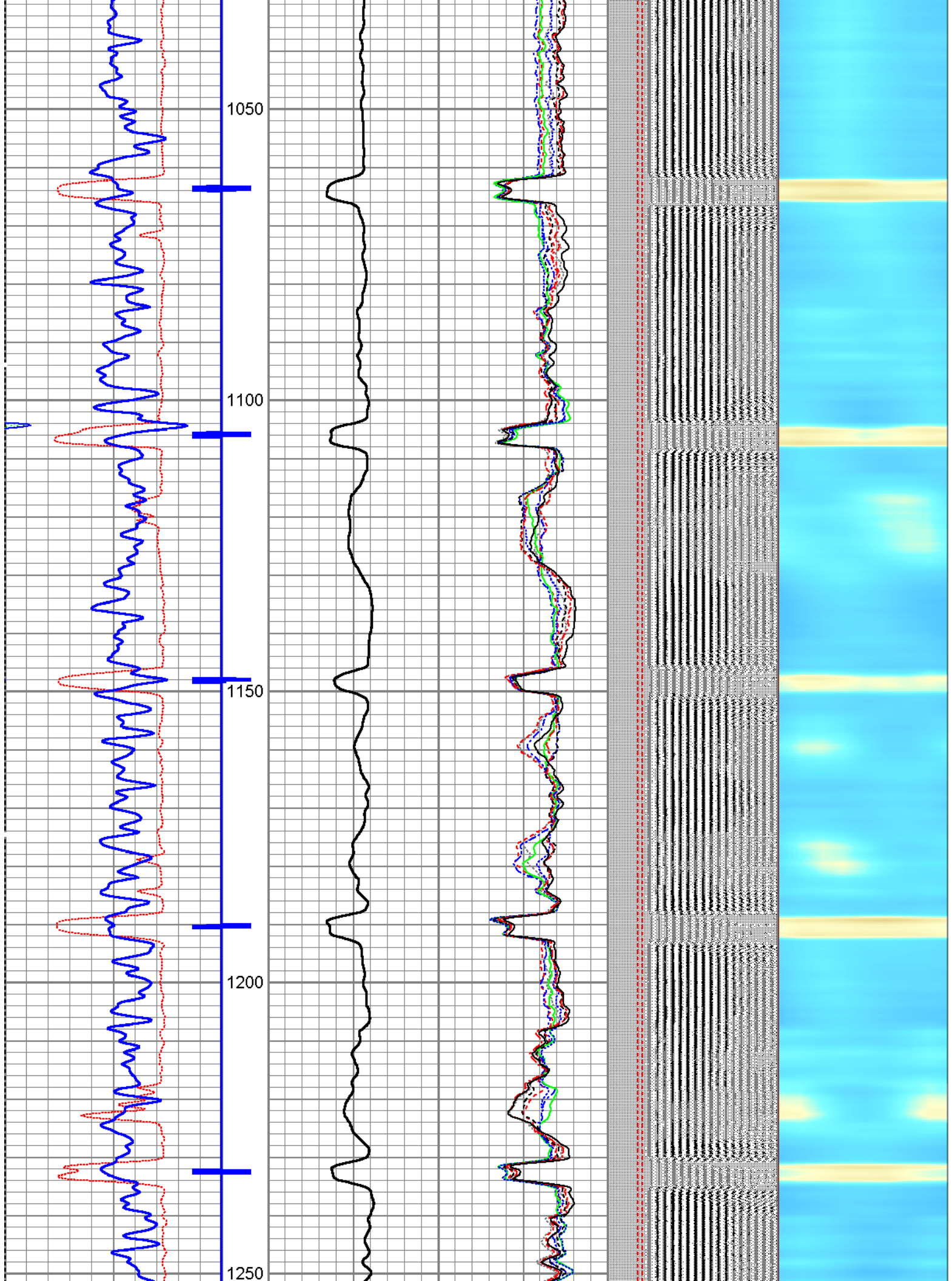


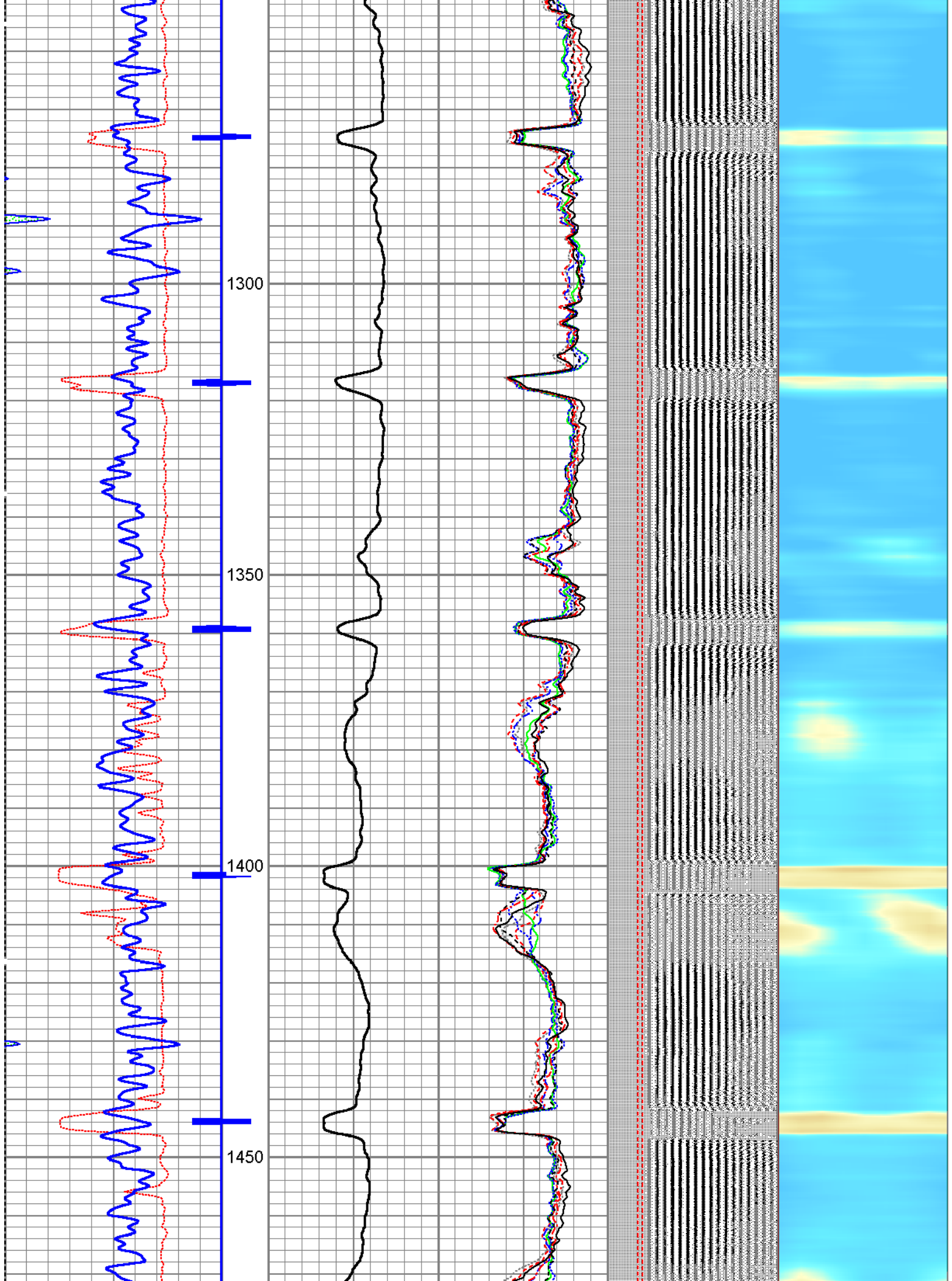


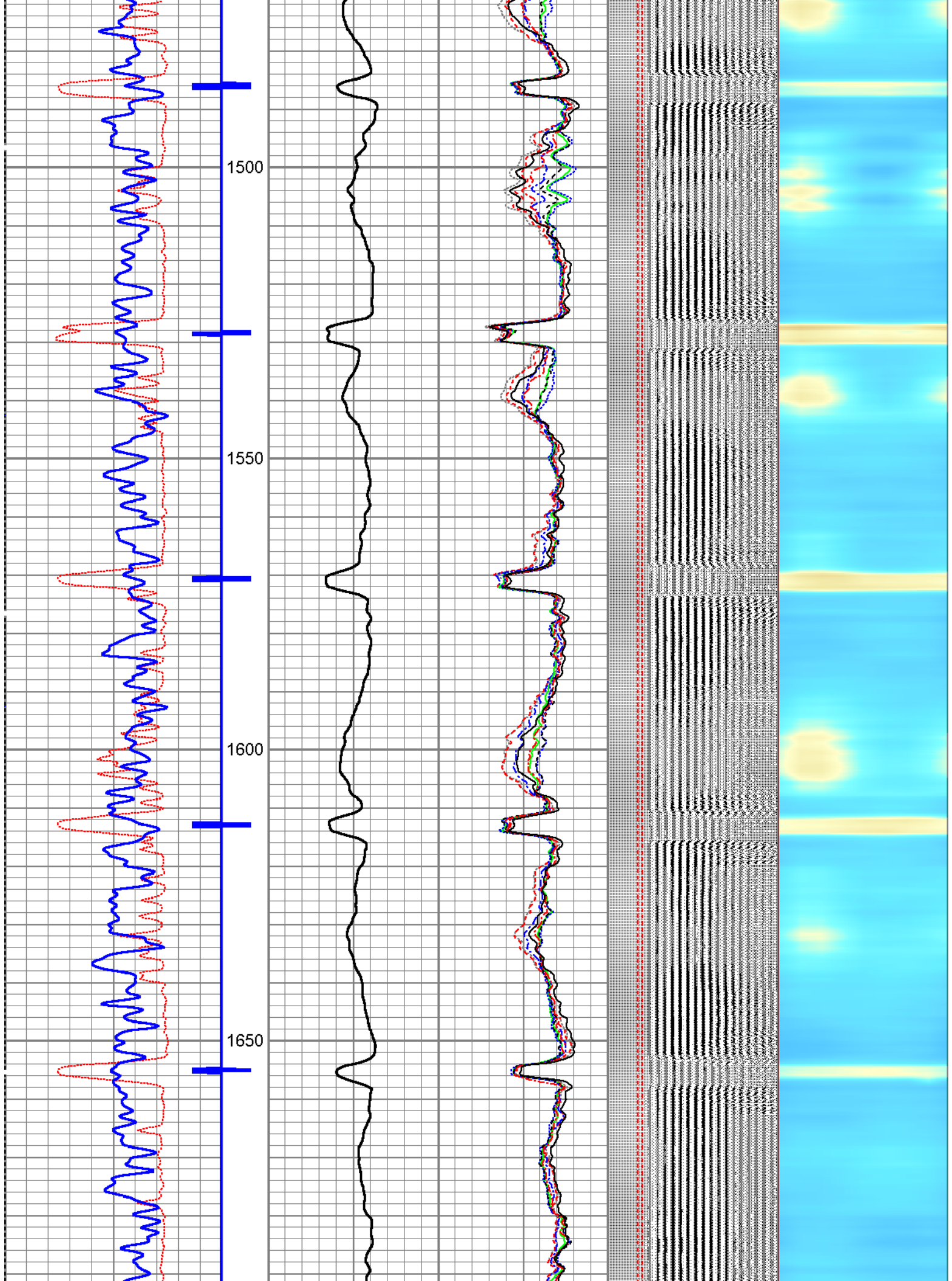


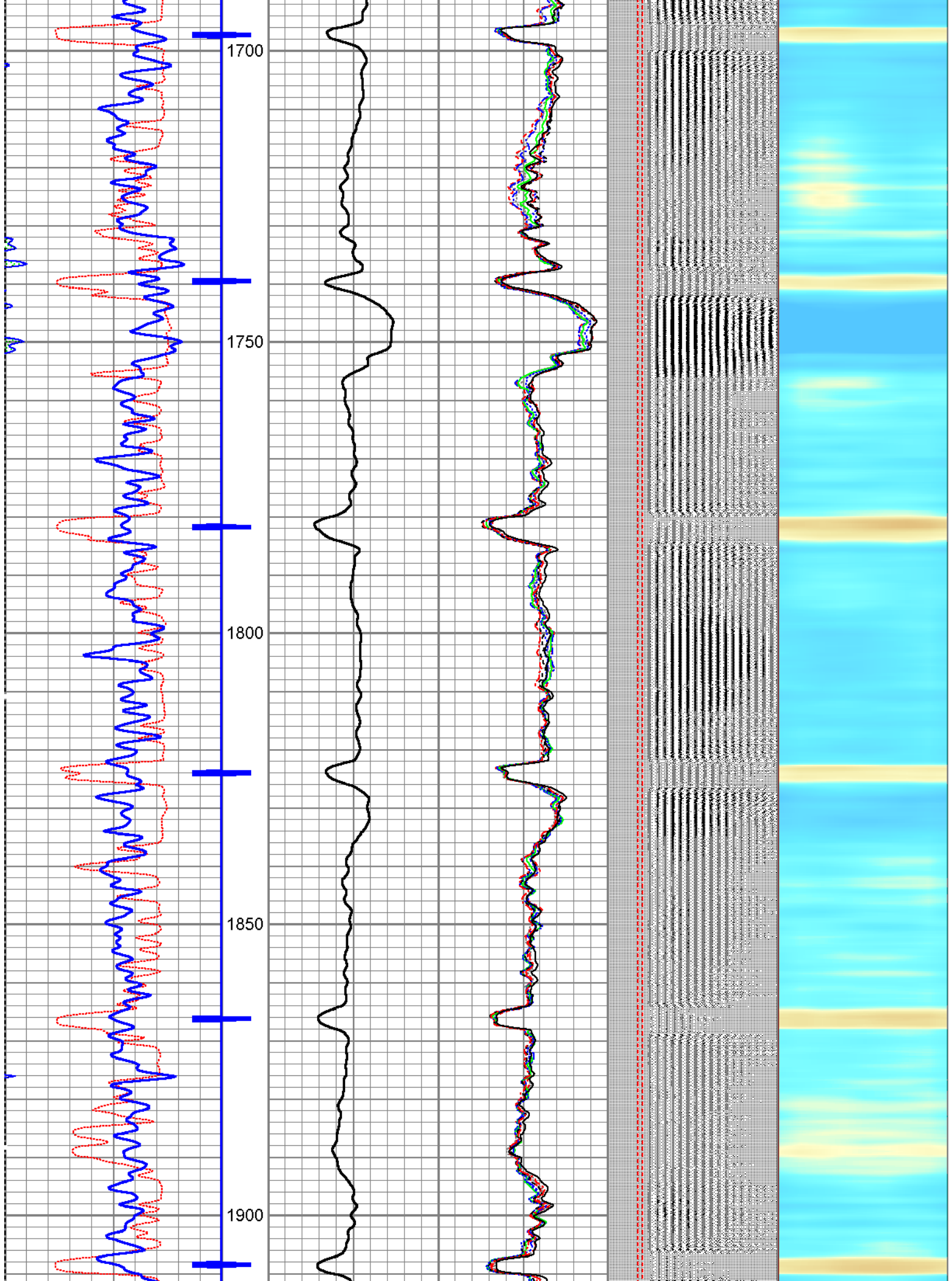


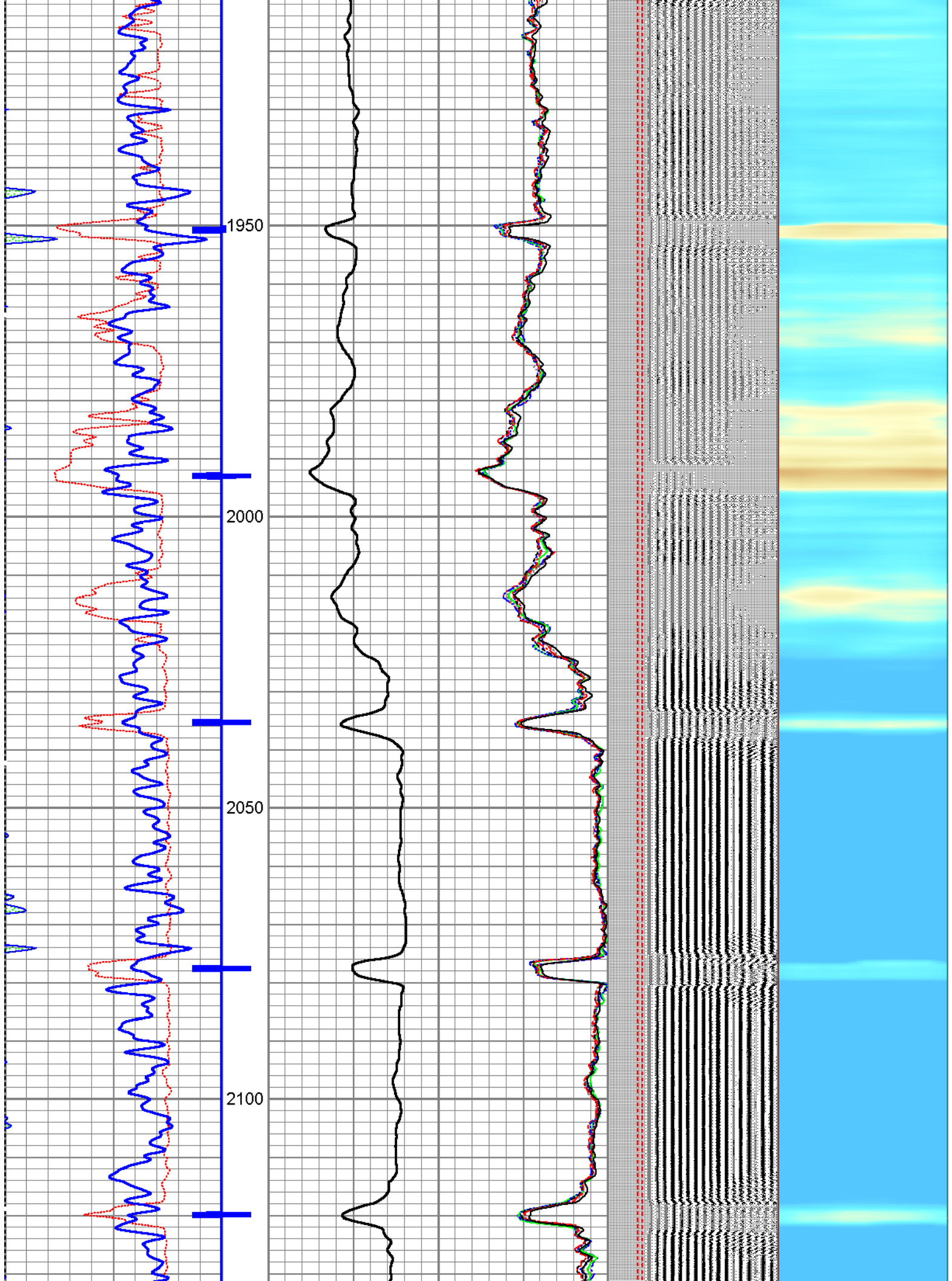


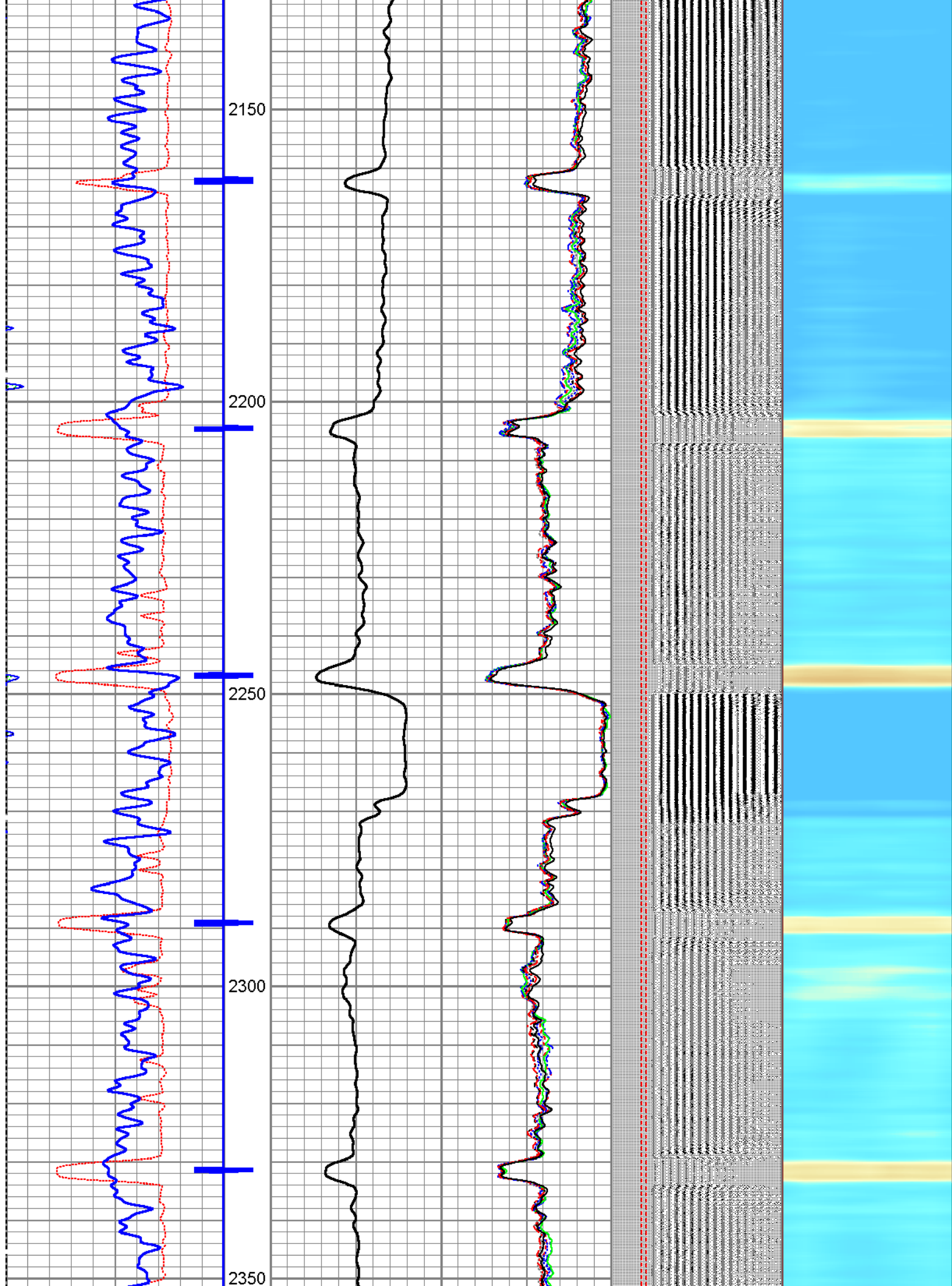


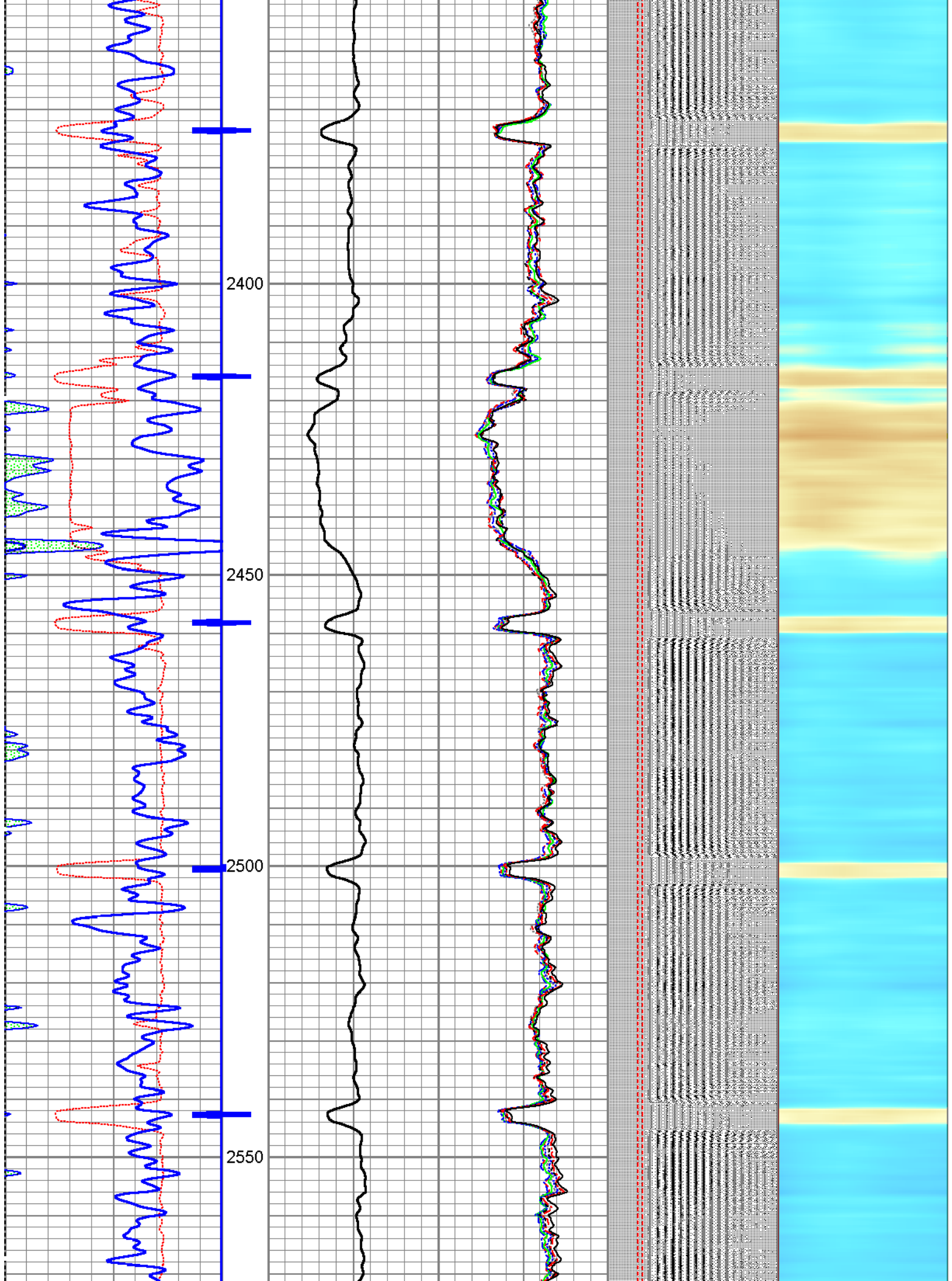


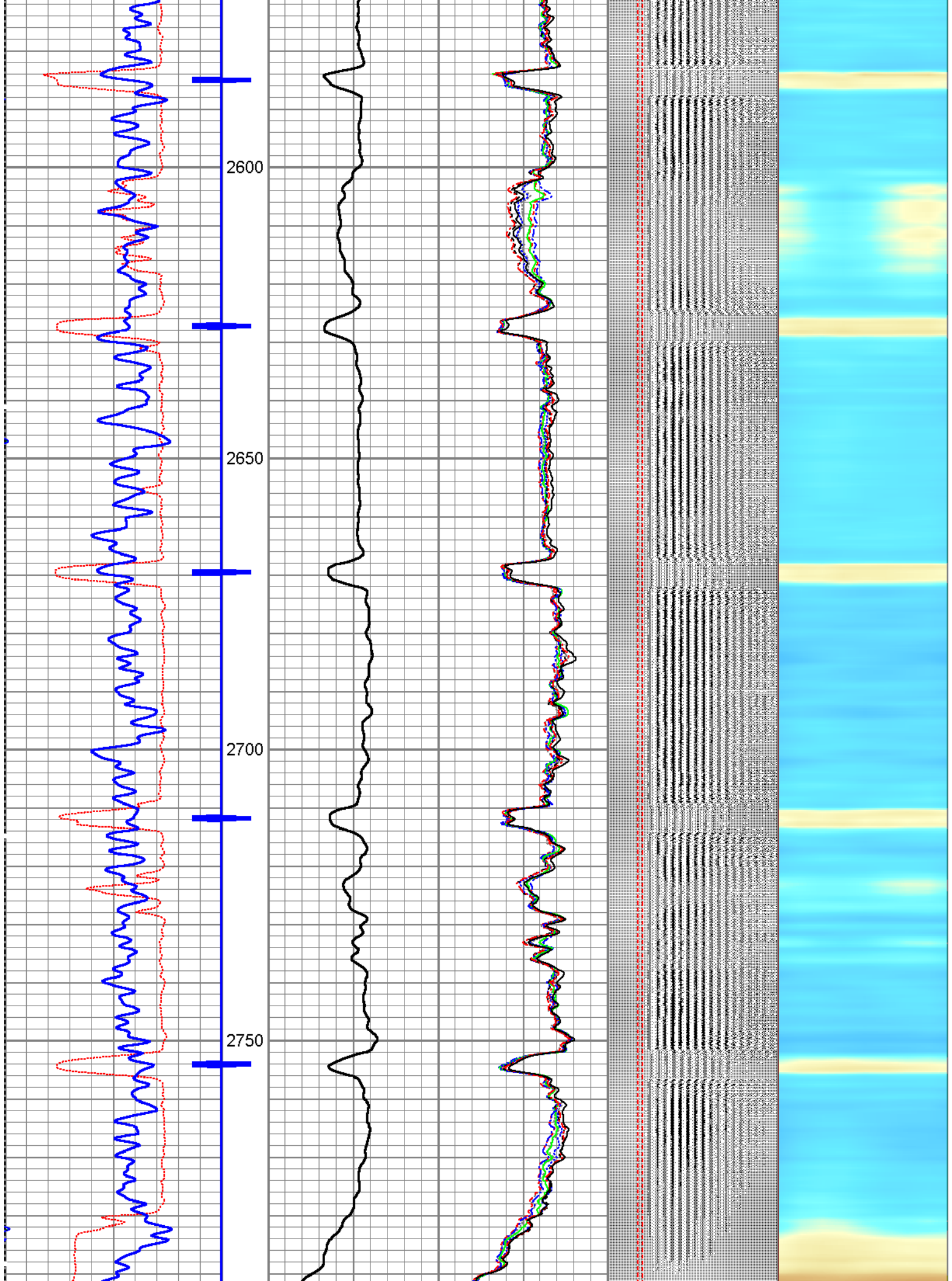


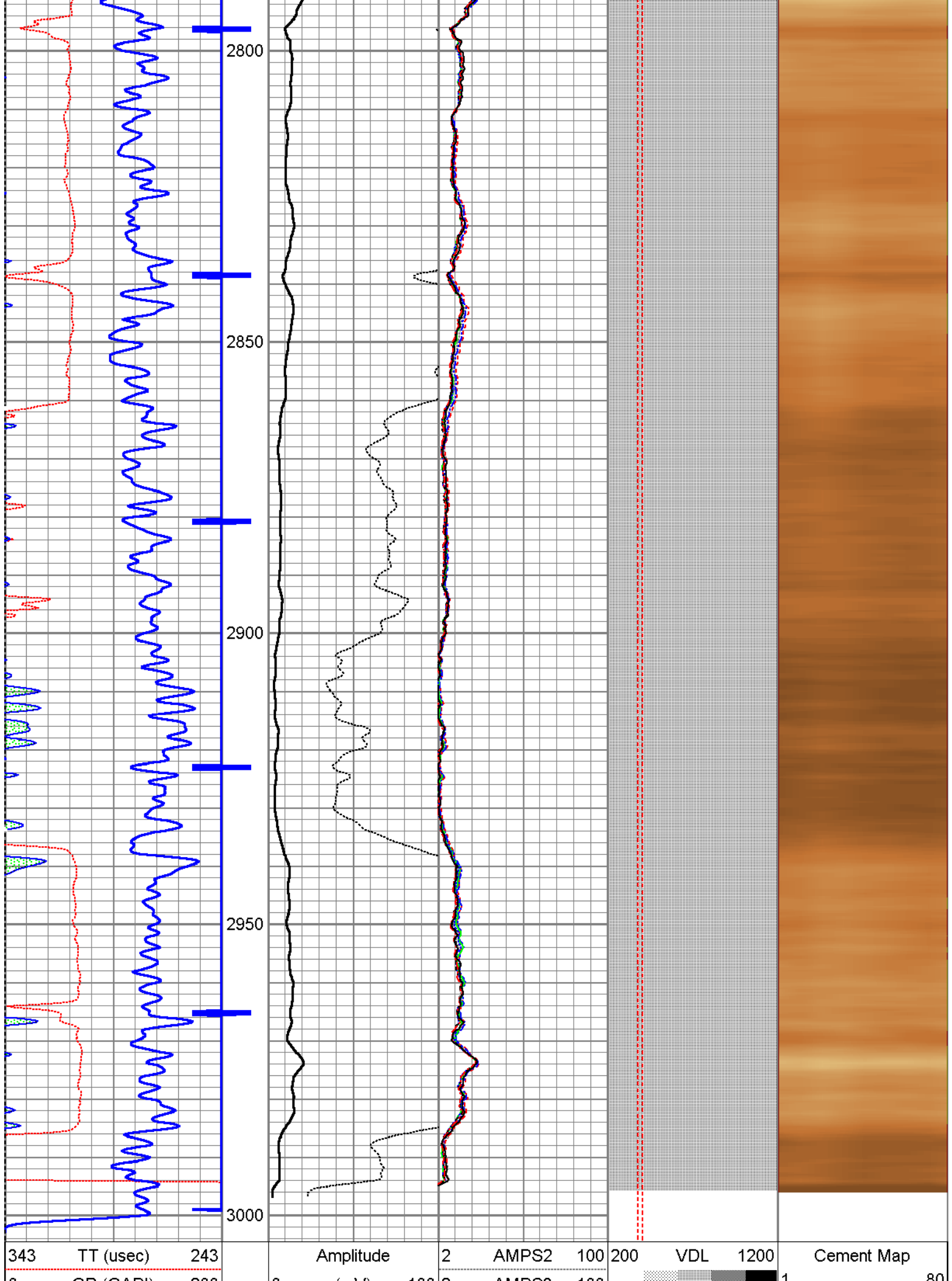













0	GR (GAPI)	200	0	(mV)	100	2	AMPS3	100		00
0	LTEN (lb)	4000	Amplified Amplitude			2	AMPS4	100	Free Pipe Gate	
			0	(mV)	10	2	AMPS5	100		
						2	AMPS6	100		
						2	AMPS7	100		
						2	AMPS8	100		
						2	AMPS1	100		

	Company	Kerr McGee Oil & Gas
	Well	Bulthaup 24-6
	Field	Wattenberg
	County	Weld
	State	Colorado