

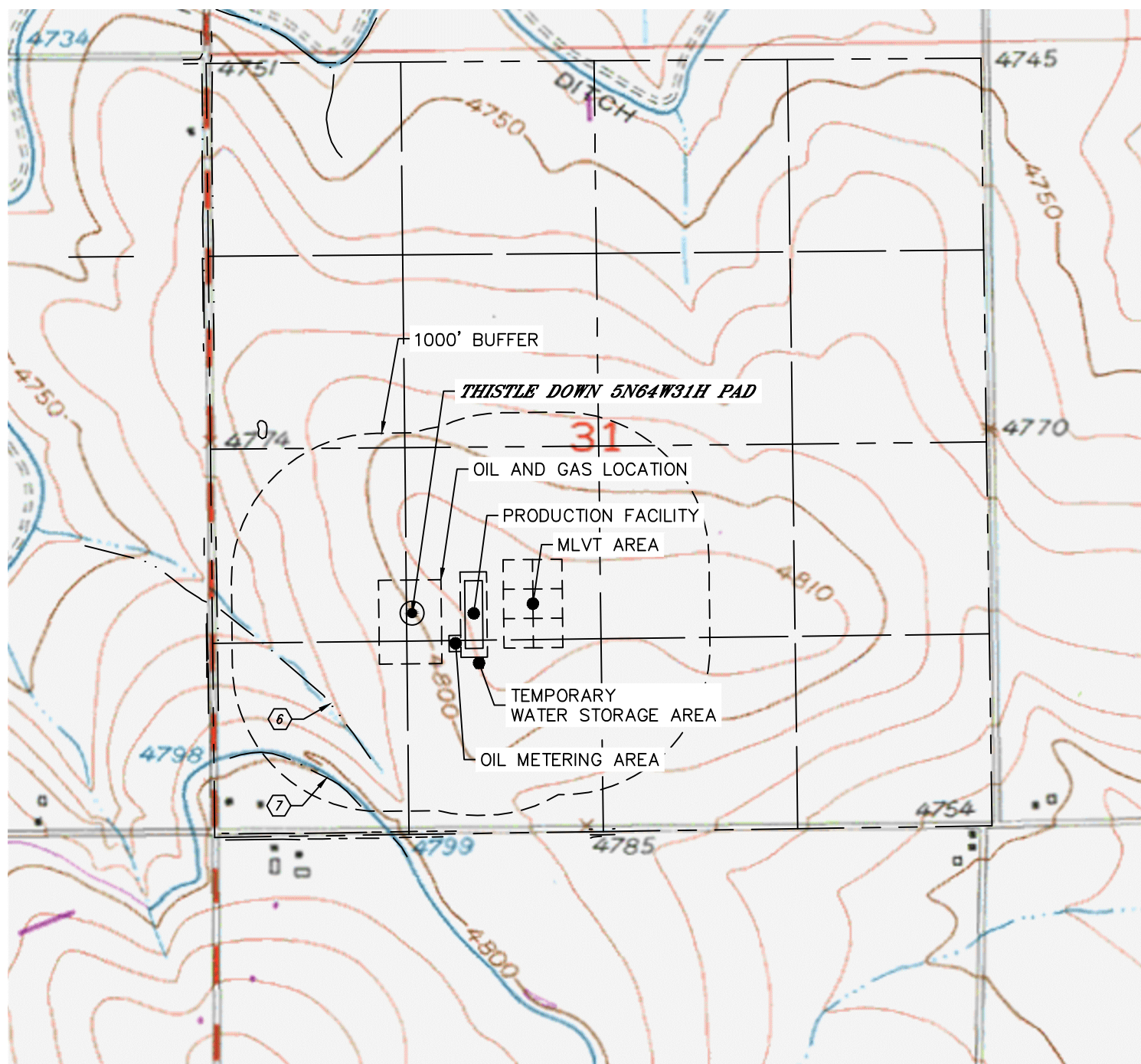


Lat40°, Inc. 6250 W. 10th Street, Unit 2, Greeley, CO 970-515-5294

HYDROLOGY MAP

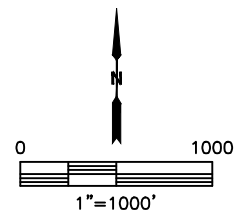
THISTLE DOWN 5N64W31H PAD

SECTION: 31
TOWNSHIP: 5N
RANGE: 64W
6TH. P.M.
WELD COUNTY, CO



DISTANCES MEASURED FROM THE EDGE OF THE OIL AND GAS LOCATION.

- ⑥ DRAINAGE 430' SW
- ⑦ DITCH 850' SW



NEAREST DOWN GRADIENT SURFACE WATER: DRAINAGE 430' SW

DATE: 1/25/2017
PROJECT#: 2016074