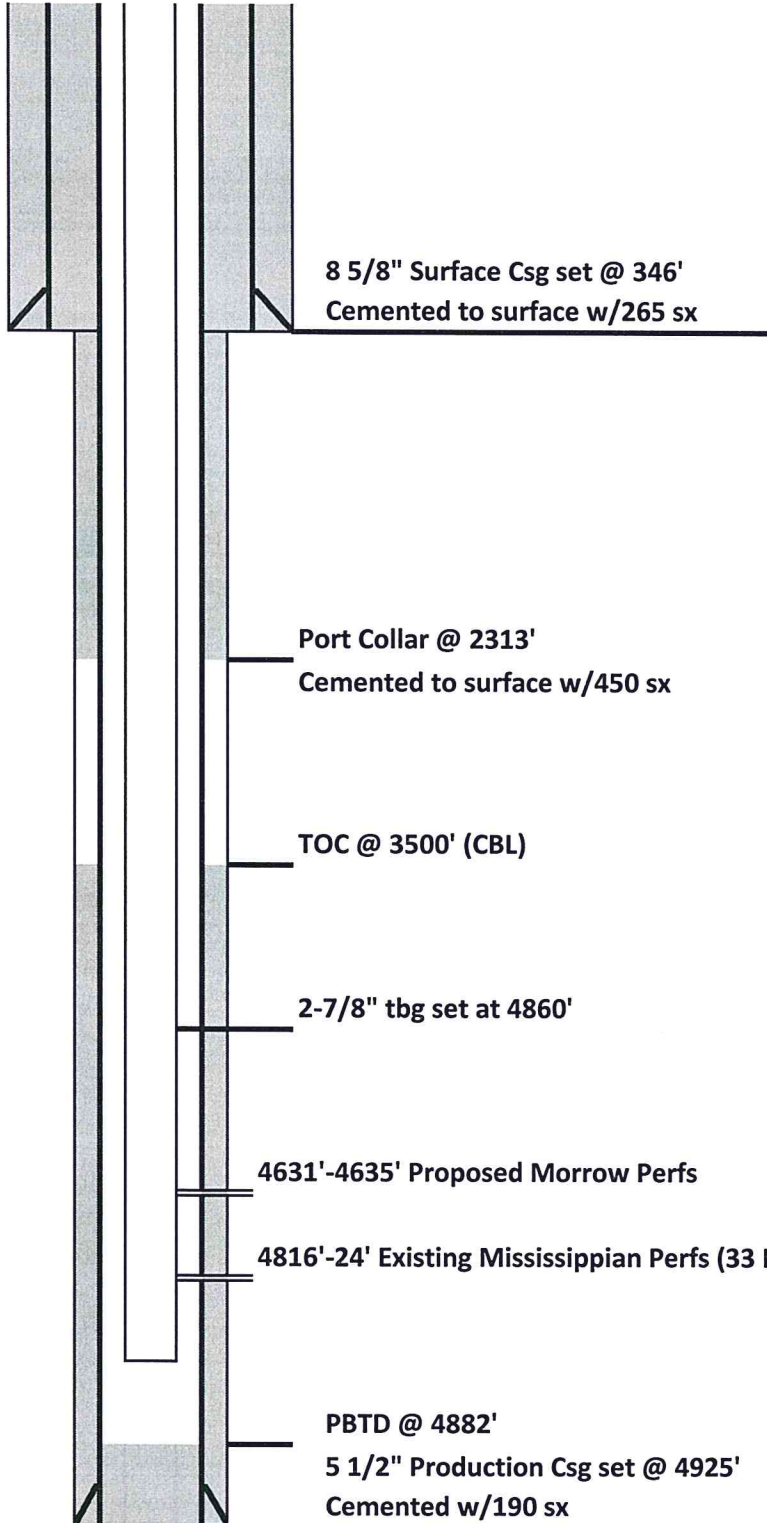




**DRILLING COMPANY, INC.**  
**WICHITA, KANSAS**

**Proposed Wellbore Diagram**



Date: 4/18/2017  
 Well Name: WF-Michel "A" #1-30  
 Location: 605' FNL & 605' FWL  
Lot 1 30-18S-45W  
 County: Kiowa  
 State: Colorado  
 API: 05-061-06862-00  
 Spud Date: 7/5/2011

Hole Size: 12 1/4"  
 Surface Casing: Set @ 346' (8 5/8")  
 Cemented with: 265 sx  
 Production Csg: Set @ 4925' (5 1/2")  
 Cemented with: 190 sx

**Log Tops:**

Anhydrite	2286
B/Anhydrite	2321
Shawnee	3454
Heebner Shale	3652
Lansing	3681
B/KC	4024
Marmaton	4064
Fort Scott	4152
Cherokee Shale	4210
Atoka	4362
Morrow Shale	4494
Mississippian	4729
RTD	4998
LTD	4996