

SECTIONS 11, 12, 13 & 14, T6N, R66W

MATCH LINE SEE SHEET 1B

WELLS
CONTINUE INTO
SECTION 10

W. 1/4 COR.
SEC. 11, T6N, R66W
FOUND 3 1/4" ALUM. CAP
P.L.S. NO. 28258
LAT: 40.502841
LON: -104.754121

S 89°21'43" W
2672.00' (M)

FALKEN 32C-9-L BOTTOM OF HOLE
FALKEN 32N-9B-L BOTTOM OF HOLE
FALKEN 9N-9C-L BOTTOM OF HOLE

11

CENTER 1/4 COR.
SEC. 11, T6N, R66W
SET 2 1/2" ALUM. CAP
P.L.S. NO. 38230
LAT: 40.502860
LON: -104.744512

S 89°21'31" W
2663.91' (M)

E. 1/4 COR.
SEC. 11, T6N, R66W
FOUND 2 1/2" ALUM. CAP
L.S. NO. 30462
LAT: 40.502879
LON: -104.734933

12

S 89°31'21" W
2653.53' (C)
LAT: 40.502877
LON: -104.725391

N 00°26'23" W 2643.71' (M)

FALKEN 9C-9-L BOTTOM OF HOLE
FALKEN 33N-9B-L BOTTOM OF HOLE
FALKEN 33N-9A-L BOTTOM OF HOLE
FALKEN 33C-9-L BOTTOM OF HOLE
FALKEN 33N-9C-L BOTTOM OF HOLE
FALKEN 16C-9-L BOTTOM OF HOLE

SW. COR.
SEC. 11, T6N, R66W
FOUND 3 1/4" ALUM. CAP
L.S. NO. 22098
LAT: 40.495578
LON: -104.754128

FALKEN 16N-9B-L BOTTOM OF HOLE
FALKEN 34C-9-L BOTTOM OF HOLE
FALKEN 34N-9C-L BOTTOM OF HOLE

S. 1/4 COR.
SEC. 11, T6N, R66W
SET 2 1/2" ALUM. CAP
P.L.S. NO. 38230
LAT: 40.495574
LON: -104.744565

SE. COR.
SEC. 11, T6N, R66W
FOUND 2 1/2" ALUM. CAP
L.S. NO. 23501
LAT: 40.495570
LON: -104.735083

S. 1/4 COR.
SEC. 12, T6N, R66W
FOUND 2 1/2" ALUM. CAP
ILLEGIBLE
LAT: 40.495583
LON: -104.725448

N 00°33'25" W 2636.52' (M)

FALKEN 30N-14B-S BOTTOM OF HOLE
FALKEN 30C-14-S BOTTOM OF HOLE
FALKEN 4N-14A-S BOTTOM OF HOLE
FALKEN 4N-14C-S BOTTOM OF HOLE
FALKEN 31N-14B-S BOTTOM OF HOLE
FALKEN 31C-14-S BOTTOM OF HOLE

LAT: 40.488338
LON: -104.744598

14

S 89°32'30" W
2647.12' (C)

W. 1/4 COR.
SEC. 14, T6N, R66W
FOUND 2 1/2" ALUM. CAP
ILLEGIBLE
LAT: 40.488341
LON: -104.754115

S 89°32'30" W
2680.32' (C)

E. 1/4 COR.
SEC. 14, T6N, R66W
FOUND 2 1/2" ALUM. CAP
L.S. NO. 23501
LAT: 40.488334
LON: -104.734962

LAT: 40.488340
LON: -104.725421

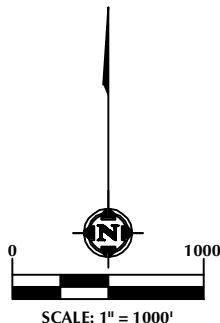
S 89°27'04" W
2653.64' (C)

13

TOP OF PRODUCTION (TYP.)

NOTES:

- ▲ INDICATES SECTION CORNER
- INDICATES CALCULATED CORNER
- BASIS OF BEARING DERIVED FROM COLORADO COORDINATE SYSTEM OF 1983 NORTH ZONE.
- ALL MEASURED DISTANCES ARE GRID. COMBINED SCALE FACTOR: .99973891 CALCULATED FROM THE SW. CORNER OF SECTION 11, T6N, R66W
- WELL FOOTAGES ARE MEASURED AT RIGHT ANGLES TO THE SECTION LINES.



WELL PAD - FALKEN 9-11 PAD

MULTI-WELL PLAN
FALKEN 32C-9-L, FALKEN 32N-9B-L, FALKEN 9N-9C-L,
FALKEN 9C-9-L, FALKEN 33N-9B-L, FALKEN 33N-9A-L, FALKEN 33C-9-L,
FALKEN 33N-9C-L, FALKEN 16C-9-L, FALKEN 16N-9B-L, FALKEN 34C-9-L,
FALKEN 34N-9C-L, FALKEN 30N-14B-S, FALKEN 30C-14-S, FALKEN 4N-14A-S,
FALKEN 4N-14C-S, FALKEN 31N-14B-S & FALKEN 31C-14-S
LOCATED IN SECTIONS 9, 10, 11, 12, 13 & 14
T6N, R66W, 6TH P.M.
WELD COUNTY, COLORADO



SRC ENERGY
1675 Broadway, Suite 2600
Denver, Colorado 80202



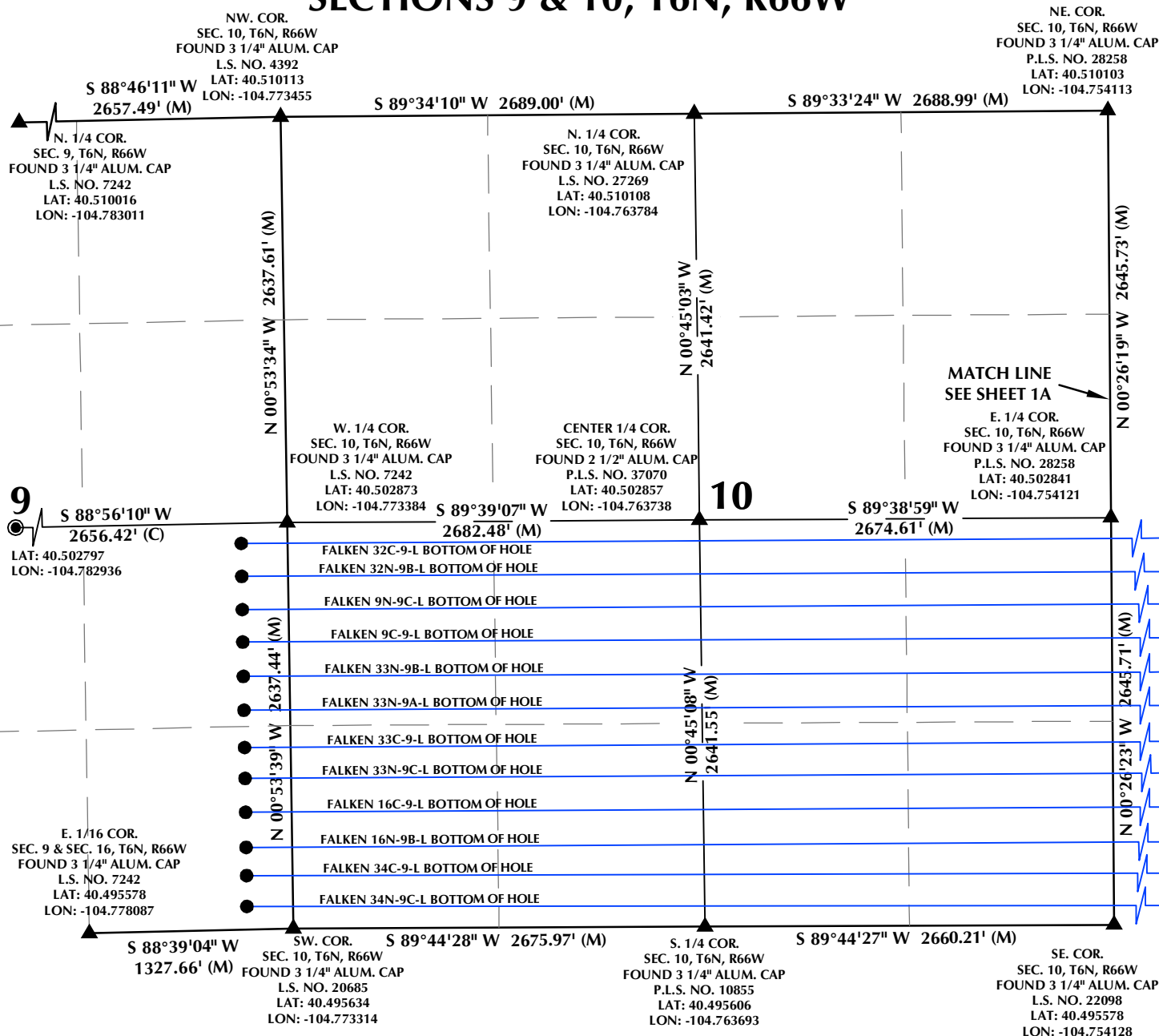
CONSULTING, LLC

SHERIDAN OFFICE
1095 Saberton Avenue
Sheridan, Wyoming 82801
Phone 307-674-0609

LOVELAND OFFICE
1635 Foxtrail Drive, Suite 204
Loveland, Colorado 80538
Phone 970-776-4331

DRAFTED BY:	LMO	CHECKED BY:	JRS	SHEET NO:
DATE DRAFTED:	4/14/17	DATE SURVEYED:	4/3/17	1A
REVISED:		FILE NAME:	17-26	1A OF 3

SECTIONS 9 & 10, T6N, R66W



NOTES:

- ▲ INDICATES SECTION CORNER
- INDICATES CALCULATED CORNER
- BASIS OF BEARING DERIVED FROM COLORADO COORDINATE SYSTEM OF 1983 NORTH ZONE.
- ALL MEASURED DISTANCES ARE GRID. COMBINED SCALE FACTOR: .99973891 CALCULATED FROM THE SW. CORNER OF SECTION 11, T6N, R66W
- WELL FOOTAGES ARE MEASURED AT RIGHT ANGLES TO THE SECTION LINES.

WELL PAD - FALKEN 9-11 PAD

MULTI-WELL PLAN
FALKEN 32C-9-L, FALKEN 32N-9B-L, FALKEN 9N-9C-L, FALKEN 9C-9-L, FALKEN 33N-9B-L, FALKEN 33N-9A-L, FALKEN 33C-9-L, FALKEN 33N-9C-L, FALKEN 16C-9-L, FALKEN 16N-9B-L, FALKEN 34C-9-L, FALKEN 34N-9C-L, FALKEN 30N-14B-S, FALKEN 30C-14-S, FALKEN 4N-14A-S, FALKEN 4N-14C-S, FALKEN 31N-14B-S & FALKEN 31C-14-S
LOCATED IN SECTIONS 9, 10, 11, 12, 13 & 14
T6N, R66W, 6TH P.M.
WELD COUNTY, COLORADO



SRC ENERGY
1675 Broadway, Suite 2600
Denver, Colorado 80202



CONSULTING, LLC

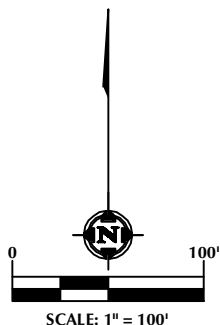
SHERIDAN OFFICE
1095 Saberton Avenue
Sheridan, Wyoming 82801
Phone 307-674-0609

LOVELAND OFFICE
1635 Foxtrail Drive, Suite 204
Loveland, Colorado 80538
Phone 970-776-4331

DRAFTED BY:	LMO	CHECKED BY:	JRS	SHEET NO:
DATE DRAFTED:	4/14/17	DATE SURVEYED:	4/3/17	1B
REVISED:		FILE NAME:	17-26	1B OF 3

FALKEN 9-11 PAD

FALKEN 32C-9-L ● 15'
 FALKEN 32N-9B-L ● 15'
 FALKEN 9N-9C-L ● 15'
 FALKEN 9C-9-L ● 15'
 FALKEN 33N-9B-L ● 15'
 FALKEN 33N-9A-L ● 15'
 FALKEN 33C-9-L ● 15'
 FALKEN 33N-9C-L ● 15'
 FALKEN 16C-9-L ● 15'
 FALKEN 16N-9B-L ● 15'
 FALKEN 34C-9-L ● 15'
 FALKEN 34N-9C-L ● 15'
 FALKEN 30N-14B-S ● 15'
 FALKEN 30C-14-S ● 15'
 FALKEN 4N-14A-S ● 15'
 FALKEN 4N-14C-S ● 15'
 FALKEN 31N-14B-S ● 15'
 FALKEN 31C-14-S ● 15'



NOTES:

1. ▲ INDICATES SECTION CORNER
2. ● INDICATES CALCULATED CORNER
3. BASIS OF BEARING DERIVED FROM COLORADO COORDINATE SYSTEM OF 1983 NORTH ZONE.
4. ALL MEASURED DISTANCES ARE GRID.
COMBINED SCALE FACTOR: .99973891 CALCULATED FROM THE SW. CORNER OF SECTION 11, T6N, R66W
5. WELL FOOTAGES ARE MEASURED AT RIGHT ANGLES TO THE SECTION LINES.

WELL PAD - FALKEN 9-11 PAD

MULTI-WELL PLAN
 FALKEN 32C-9-L, FALKEN 32N-9B-L, FALKEN 9N-9C-L,
 FALKEN 9C-9-L, FALKEN 33N-9B-L, FALKEN 33N-9A-L, FALKEN 33C-9-L,
 FALKEN 33N-9C-L, FALKEN 16C-9-L, FALKEN 16N-9B-L, FALKEN 34C-9-L,
 FALKEN 34N-9C-L, FALKEN 30N-14B-S, FALKEN 30C-14-S, FALKEN 4N-14A-S,
 FALKEN 4N-14C-S, FALKEN 31N-14B-S & FALKEN 31C-14-S
 LOCATED IN SECTIONS 9, 10, 11, 12, 13 & 14
 T6N, R66W, 6TH P.M.
 WELD COUNTY, COLORADO



SRC ENERGY
 1675 Broadway, Suite 2600
 Denver, Colorado 80202



CONSULTING, LLC

SHERIDAN OFFICE
 1095 Saberton Avenue
 Sheridan, Wyoming 82801
 Phone 307-674-0609

LOVELAND OFFICE
 1635 Foxtrail Drive, Suite 204
 Loveland, Colorado 80538
 Phone 970-776-4331

DRAFTED BY:	LMO	CHECKED BY:	JRS	SHEET NO:
DATE DRAFTED:	4/14/17	DATE SURVEYED:	4/3/17	2
REVISED:		FILE NAME:	17-26	2 OF 3

FALKEN 9-11 PAD

WELL NOTES:

FALKEN 32C-9-L

SURFACE:

1904' FSL & 276' FEL

LATITUDE= 40.500797°

LONGITUDE= -104.735945°

TOP OF PRODUCTION:

2499' FSL & 300' FWL

LATITUDE= 40.502431°

LONGITUDE= -104.733858°

BOTTOM HOLE:

2509' FSL & 300' FEL

LATITUDE= 40.502508°

LONGITUDE= -104.774460°

FORMATION:

CODELL

FALKEN 32N-9B-L

SURFACE:

1889' FSL & 276' FEL

LATITUDE= 40.500756°

LONGITUDE= -104.735945°

TOP OF PRODUCTION:

2276' FSL & 300' FWL

LATITUDE= 40.501819°

LONGITUDE= -104.733864°

BOTTOM HOLE:

2294' FSL & 300' FEL

LATITUDE= 40.501918°

LONGITUDE= -104.774454°

FORMATION:

NIOBRARA

FALKEN 9N-9C-L

SURFACE:

1874' FSL & 276' FEL

LATITUDE= 40.500715°

LONGITUDE= -104.735946°

TOP OF PRODUCTION:

2070' FSL & 300' FWL

LATITUDE= 40.501253°

LONGITUDE= -104.733870°

BOTTOM HOLE:

2079' FSL & 300' FEL

LATITUDE= 40.501328°

LONGITUDE= -104.774448°

FORMATION:

NIOBRARA

FALKEN 9C-9-L

SURFACE:

1859' FSL & 276' FEL

LATITUDE= 40.500674°

LONGITUDE= -104.735946°

TOP OF PRODUCTION:

1843' FSL & 300' FWL

LATITUDE= 40.500630°

LONGITUDE= -104.733876°

BOTTOM HOLE:

1868' FSL & 300' FEL

LATITUDE= 40.500749°

LONGITUDE= -104.774443°

FORMATION:

CODELL

FALKEN 33N-9B-L

SURFACE:

1844' FSL & 276' FEL

LATITUDE= 40.500632°

LONGITUDE= -104.735947°

TOP OF PRODUCTION:

1624' FSL & 300' FWL

LATITUDE= 40.500029°

LONGITUDE= -104.733881°

BOTTOM HOLE:

1644' FSL & 300' FEL

LATITUDE= 40.500134°

LONGITUDE= -104.774437°

FORMATION:

NIOBRARA

FALKEN 33N-9A-L

SURFACE:

1829' FSL & 276' FEL

LATITUDE= 40.500591°

LONGITUDE= -104.735947°

TOP OF PRODUCTION:

1406' FSL & 300' FWL

LATITUDE= 40.499431°

LONGITUDE= -104.733887°

BOTTOM HOLE:

1424' FSL & 300' FEL

LATITUDE= 40.499530°

LONGITUDE= -104.774431°

FORMATION:

NIOBRARA

FALKEN 33C-9-L

SURFACE:

1814' FSL & 276' FEL

LATITUDE= 40.500550°

LONGITUDE= -104.735948°

TOP OF PRODUCTION:

1179' FSL & 300' FWL

LATITUDE= 40.498808°

LONGITUDE= -104.733893°

BOTTOM HOLE:

1182' FSL & 300' FEL

LATITUDE= 40.498866°

LONGITUDE= -104.774424°

FORMATION:

CODELL

FALKEN 33N-9C-L

SURFACE:

1799' FSL & 276' FEL

LATITUDE= 40.500509°

LONGITUDE= -104.735948°

TOP OF PRODUCTION:

973' FSL & 300' FWL

LATITUDE= 40.498242°

LONGITUDE= -104.733899°

BOTTOM HOLE:

981' FSL & 300' FEL

LATITUDE= 40.498314°

LONGITUDE= -104.774419°

FORMATION:

NIOBRARA

FALKEN 16C-9-L

SURFACE:

1784' FSL & 276' FEL

LATITUDE= 40.500468°

LONGITUDE= -104.735949°

TOP OF PRODUCTION:

750' FSL & 300' FWL

LATITUDE= 40.497630°

LONGITUDE= -104.733905°

BOTTOM HOLE:

761' FSL & 300' FEL

LATITUDE= 40.497710°

LONGITUDE= -104.774413°

FORMATION:

CODELL

FALKEN 16N-9B-L

SURFACE:

1769' FSL & 276' FEL

LATITUDE= 40.500427°

LONGITUDE= -104.735949°

TOP OF PRODUCTION:

523' FSL & 300' FWL

LATITUDE= 40.497007°

LONGITUDE= -104.733911°

BOTTOM HOLE:

533' FSL & 300' FEL

LATITUDE= 40.497084°

LONGITUDE= -104.774407°

FORMATION:

NIOBRARA

FALKEN 34C-9-L

SURFACE:

1754' FSL & 276' FEL

LATITUDE= 40.500385°

LONGITUDE= -104.735950°

TOP OF PRODUCTION:

301' FSL & 300' FWL

LATITUDE= 40.496397°

LONGITUDE= -104.733917°

BOTTOM HOLE:

350' FSL & 300' FEL

LATITUDE= 40.496582°

LONGITUDE= -104.774402°

FORMATION:

CODELL

FALKEN 34N-9C-L

SURFACE:

1739' FSL & 276' FEL

LATITUDE= 40.500344°

LONGITUDE= -104.735950°

TOP OF PRODUCTION:

82' FSL & 300' FWL

LATITUDE= 40.495796°

LONGITUDE= -104.733922°

BOTTOM HOLE:

149' FSL & 300' FEL

LATITUDE= 40.496030°

LONGITUDE= -104.774397°

FORMATION:

NIOBRARA

WELL PAD - FALKEN 9-11 PAD

MULTI-WELL PLAN

FALKEN 32C-9-L, FALKEN 32N-9B-L, FALKEN 9N-9C-L,
FALKEN 9C-9-L, FALKEN 33N-9B-L, FALKEN 33N-9A-L, FALKEN 33C-9-L,
FALKEN 33N-9C-L, FALKEN 16C-9-L, FALKEN 16N-9B-L, FALKEN 34C-9-L,
FALKEN 34N-9C-L, FALKEN 30N-14B-S, FALKEN 30C-14-S, FALKEN 4N-14A-S,
FALKEN 4N-14C-S, FALKEN 31N-14B-S & FALKEN 31C-14-S
LOCATED IN SECTIONS 9, 10, 11, 12, 13 & 14
T6N, R66W, 6TH P.M.
WELD COUNTY, COLORADO



SRC ENERGY
1675 Broadway, Suite 2600
Denver, Colorado 80202



CONSULTING, LLC

SHERIDAN OFFICE
1095 Saberton Avenue
Sheridan, Wyoming 82801
Phone 307-674-0609

LOVELAND OFFICE
1635 Foxtrail Drive, Suite 204
Loveland, Colorado 80538
Phone 970-776-4331

DRAFTED BY:	LMO	CHECKED BY:	JRS	SHEET NO:
DATE DRAFTED:	4/14/17	DATE SURVEYED:	4/3/17	3A
REVISED:		FILE NAME:	17-26	3A OF 3

FALKEN 9-11 PAD

WELL NOTES:

FALKEN 30N-14B-S

SURFACE:

1724' FSL & 276' FEL

LATITUDE= 40.500303°

LONGITUDE= -104.735951°

TOP OF PRODUCTION:

140' FNL & 300' FWL

LATITUDE= 40.495187°

LONGITUDE= -104.733922°

BOTTOM HOLE:

129' FNL & 50' FWL

LATITUDE= 40.495224°

LONGITUDE= -104.753947°

FORMATION:

NIOBRARA

FALKEN 30C-14-S

SURFACE:

1709' FSL & 276' FEL

LATITUDE= 40.500262°

LONGITUDE= -104.735951°

TOP OF PRODUCTION:

359' FNL & 300' FWL

LATITUDE= 40.494586°

LONGITUDE= -104.733919°

BOTTOM HOLE:

336' FNL & 50' FWL

LATITUDE= 40.494656°

LONGITUDE= -104.753946°

FORMATION:

CODELL

FALKEN 4N-14A-S

SURFACE:

1694' FSL & 276' FEL

LATITUDE= 40.500221°

LONGITUDE= -104.735952°

TOP OF PRODUCTION:

582' FNL & 300' FWL

LATITUDE= 40.493974°

LONGITUDE= -104.733915°

BOTTOM HOLE:

563' FNL & 460' FWL

LATITUDE= 40.494032°

LONGITUDE= -104.752471°

FORMATION:

NIOBRARA

FALKEN 4N-14C-S

SURFACE:

1679' FSL & 276' FEL

LATITUDE= 40.500180°

LONGITUDE= -104.735952°

TOP OF PRODUCTION:

800' FNL & 300' FWL

LATITUDE= 40.493375°

LONGITUDE= -104.733912°

BOTTOM HOLE:

789' FNL & 460' FWL

LATITUDE= 40.493412°

LONGITUDE= -104.752470°

FORMATION:

NIOBRARA

FALKEN 31N-14B-S

SURFACE:

1664' FSL & 276' FEL

LATITUDE= 40.500138°

LONGITUDE= -104.735952°

TOP OF PRODUCTION:

1027' FNL & 300' FWL

LATITUDE= 40.492752°

LONGITUDE= -104.733908°

BOTTOM HOLE:

1015' FNL & 460' FWL

LATITUDE= 40.492792°

LONGITUDE= -104.752469°

FORMATION:

NIOBRARA

FALKEN 31C-14-S

SURFACE:

1649' FSL & 276' FEL

LATITUDE= 40.500097°

LONGITUDE= -104.735953°

TOP OF PRODUCTION:

1237' FNL & 300' FWL

LATITUDE= 40.492176°

LONGITUDE= -104.733905°

BOTTOM HOLE:

1226' FNL & 460' FWL

LATITUDE= 40.492212°

LONGITUDE= -104.752468°

FORMATION:

CODELL

WELL PAD - FALKEN 9-11 PAD

MULTI-WELL PLAN

FALKEN 32C-9-L, FALKEN 32N-9B-L, FALKEN 9N-9C-L,
FALKEN 9C-9-L, FALKEN 33N-9B-L, FALKEN 33N-9A-L, FALKEN 33C-9-L,
FALKEN 33N-9C-L, FALKEN 16C-9-L, FALKEN 16N-9B-L, FALKEN 34C-9-L,
FALKEN 34N-9C-L, FALKEN 30N-14B-S, FALKEN 30C-14-S, FALKEN 4N-14A-S,
FALKEN 4N-14C-S, FALKEN 31N-14B-S & FALKEN 31C-14-S
LOCATED IN SECTIONS 9, 10, 11, 12, 13 & 14
T6N, R66W, 6TH P.M.
WELD COUNTY, COLORADO



SRC ENERGY

1675 Broadway, Suite 2600
Denver, Colorado 80202



CONSULTING, LLC

SHERIDAN OFFICE
1095 Saberton Avenue
Sheridan, Wyoming 82801
Phone 307-674-0609

LOVELAND OFFICE
1635 Foxtrail Drive, Suite 204
Loveland, Colorado 80538
Phone 970-776-4331

DRAFTED BY:	LMO	CHECKED BY:	JRS	SHEET NO:
DATE DRAFTED:	4/14/17	DATE SURVEYED:	4/3/17	3B
REVISED:		FILE NAME:	17-26	3B OF 3