

Mineral Lease Map – AD-Library

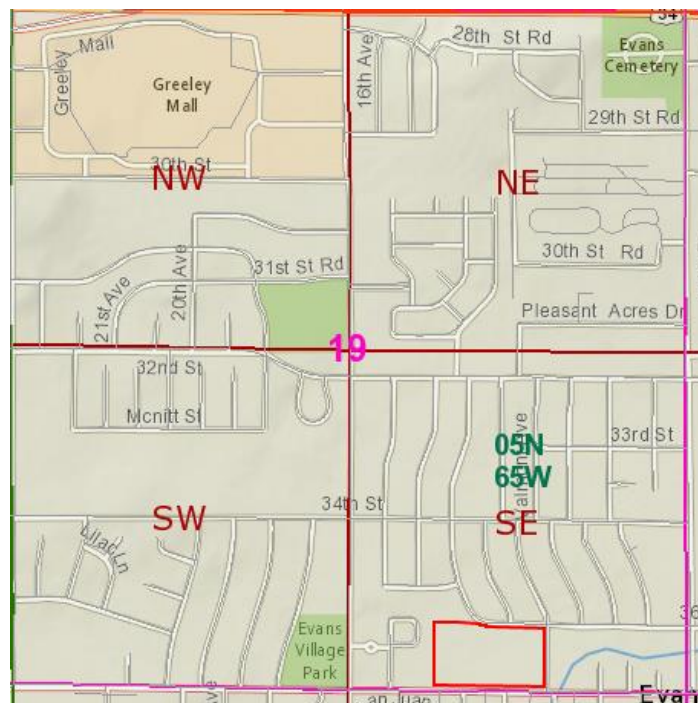
Spacing Unit:

Section 24-5N-66W: S/2SE/4
Section 25-5N-66W: N/2NE/4
Section 19-5N-65W: S/2S/2
Section 20-5N-65W: S/2S/2
Section 30-5N-65W: N/2N/2
Section 29-5N-65W: N/2N/2
Acres: 800

Wells: AD-Library 1-20-24 and AD-Library 2-20-24

Lease:

Lessor: Weld County School District 6
Lessee: Mineral Resources Inc.
Reception No.: 3858329
Recording Date: 7/11/2012
Lease Date: 6/13/2012
Located in: Section 9-5N-65W
Acres: 9.1042



— Outline of Lease described