

"These interpretations and analyses ("Interpretations") are opinions provided by Baker Hughes Oilfield Operations, Inc ("Baker Hughes"), based upon industry practice, empirical relationships, assumptions and measurements, (many of which may be provided by the customer). The Interpretations are not infallible and may be subject to different opinions. Vjwu."Dcmgt"JwiJgu"fqgu"pqv"ycttcpv"vjgkt"ceewtce{"."eqttgevpguu."qt"eqorngvgpguu."qt"vjcv"vjg"ewuvqogtøu"cpflqt"cp{"vjktf"rctv{øu"tgnkcpv"qp"uwej"Kpvgtrtgvcvkqpu"yknn"ceeornkuJ"cp{"rctvkewnct"tguwnvu0"Vjg"ewuvqogt"cuuwogu"hwnn" responsibility for the use of the Interpretations and for decisions based thereon and the customer agrees to release, defend and indemnify Baker Hughes, its parent, subsidiaries and affiliated or related entities, and subcontractors, together with its and their officers, directors, employees, agents and invitees against, any and all claims, losses, damages, or expenses sustained by the customer or any third party arising out of reliance upon or use of the Interpretations, without regard to the cause(s) thereof, including without limitation any form of negligence on the part of Baker Hughes. Unless other contract terms have been agreed to by the parties, each party's liabilities and qdnkicvkqpu"ujcnn"dg"iqxgtpgf"d{"Dcmgt"JwiJgu"Kpeqtrqtcvvgføu"Yqtnfykfg"Vgtou"cpf"Eqpfkvkqpu0\$"

Crew								
Name	Arrive Wellsite	Depart Wellsite	Name	Arrive Wellsite	Depart Wellsite	Name	Arrive Wellsite	Depart Wellsite
Emi Iyalla	2017-02-24	2017-02-27	Zac Williams	2017-02-24	2017-02-27			

Equipment and Service Data							
Run No.	Tool	Serial Number	Measurement	Sensor Offset (ft)	Bit Offset (ft)	Max O.D. (in)	Min I.D. (in)
1	ATC_SU	11813726	Near Bit VSS	5.93	6.73	7.000	2.250
1	ATC_SU	11813726	Near Bit Inclination	5.93	6.73	7.000	2.250
1	ATC_MWD	12304740	Gamma (single)	2.75	12.90	7.000	2.250
1	ATC_MWD	12304740	Directional (mag)	12.27	22.42	7.000	2.250

Service and Tool Mnemonics		
Mnemonic	Name	Description
ATC_SU	ATC_SU	Auto Trak Curve Steering Unit
ATC_MWD	ATC_MWD	Auto Trak Curve MWD

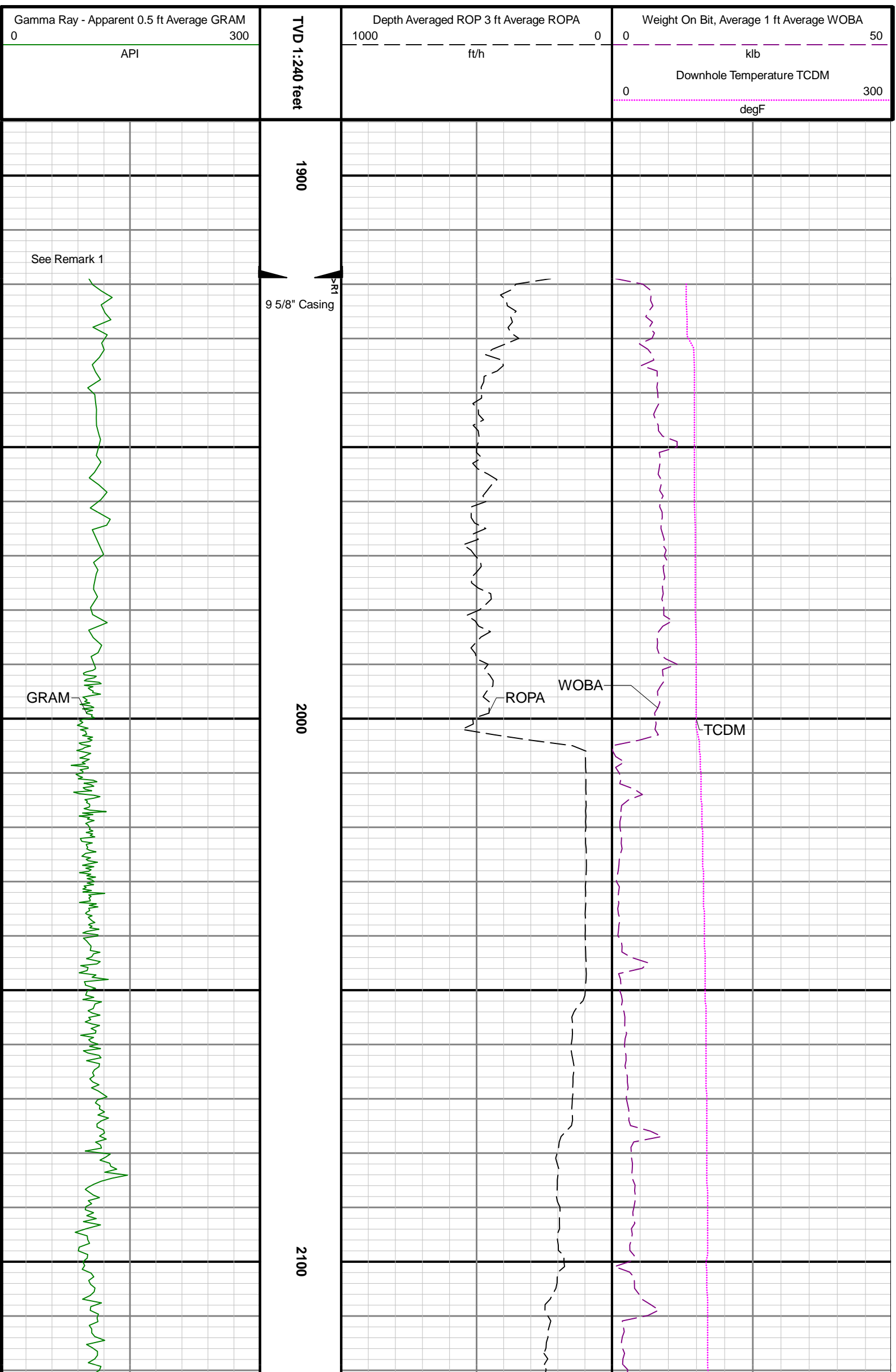
ATC_MWD	ATC_MWD	Auto Trak Curve MWD
ATC_LCPM	ATC_LCPM	Auto Trak Curve LCPM

Comments

- 1
- Depth measurements were obtained from a depth control system not supplied or operated by Baker Hughes. Due to the lack of control by Baker Hughes, depth calibrations and measurements could not be independently verified.
- 2
- Baker Hughes LWD run 1 utilized a 6.75 inch NaviGamma (Directional and Gamma Ray) services behind a 8.5 inch bit and rotary steerable assembly from 1919 to 10866 feet MD (1919 to 6028 feet TVD).

Remarks

Number	Measured Depth (ft)	Hole Section (in)	Run No.	Remark
1	1919.00	8.500	1	Gamma Ray logging operations began at 1919 feet MD (1919 feet TVD).

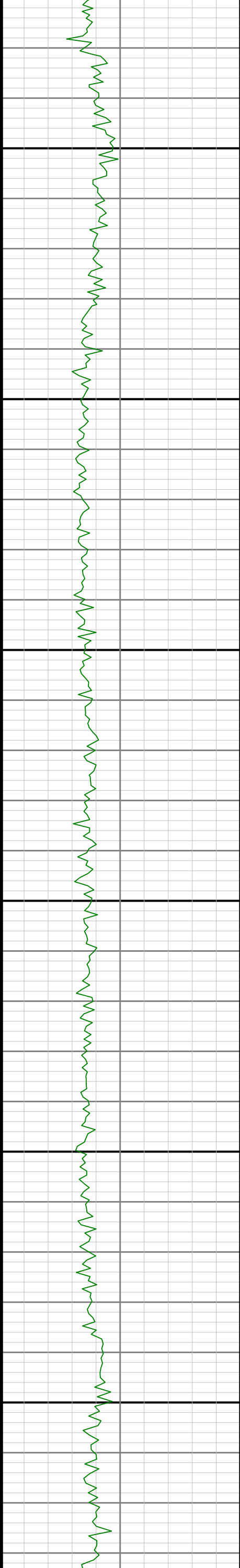


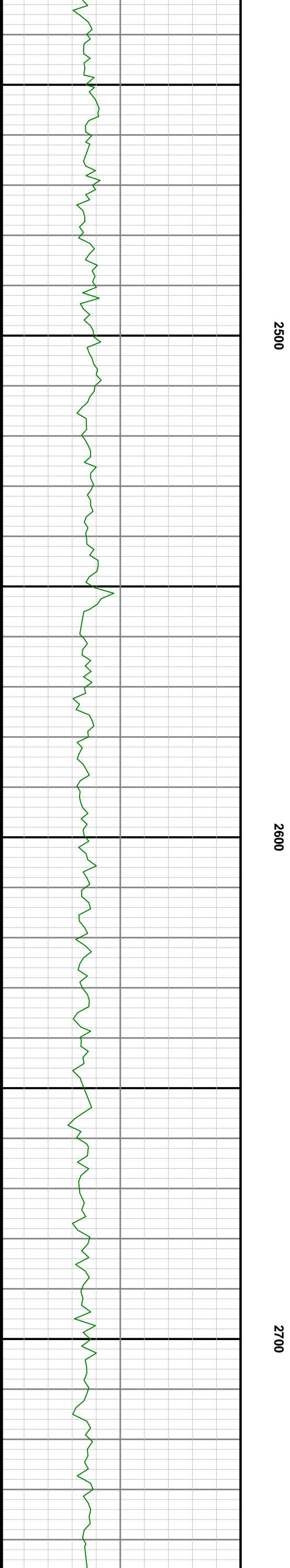
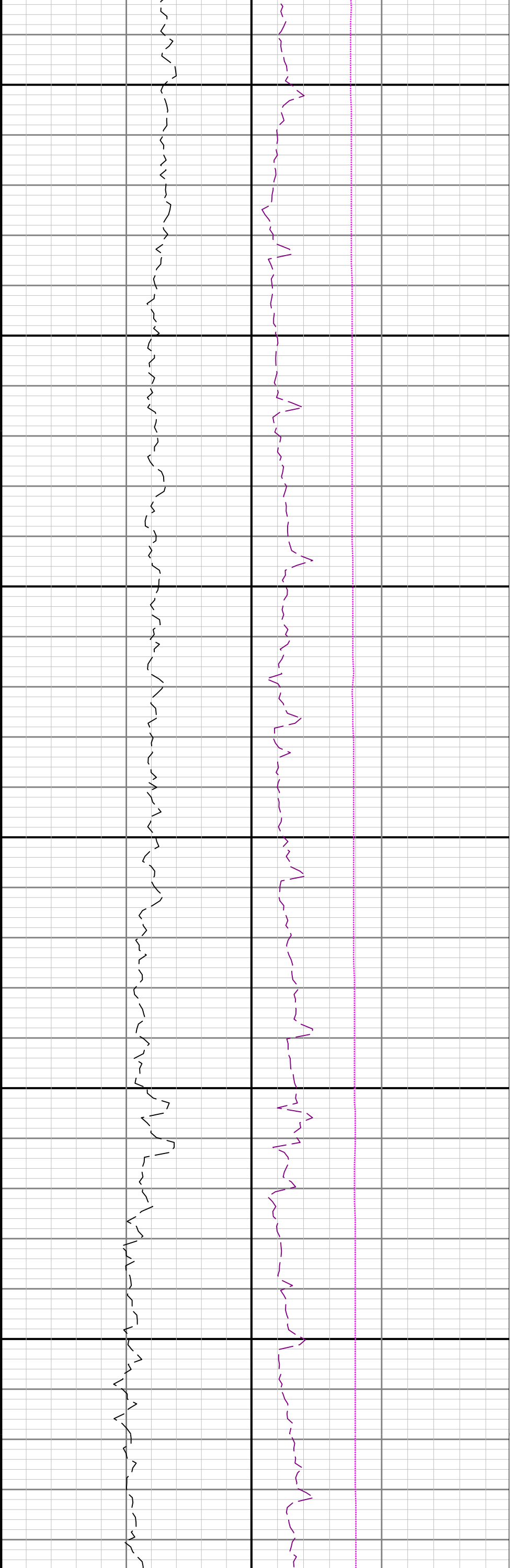


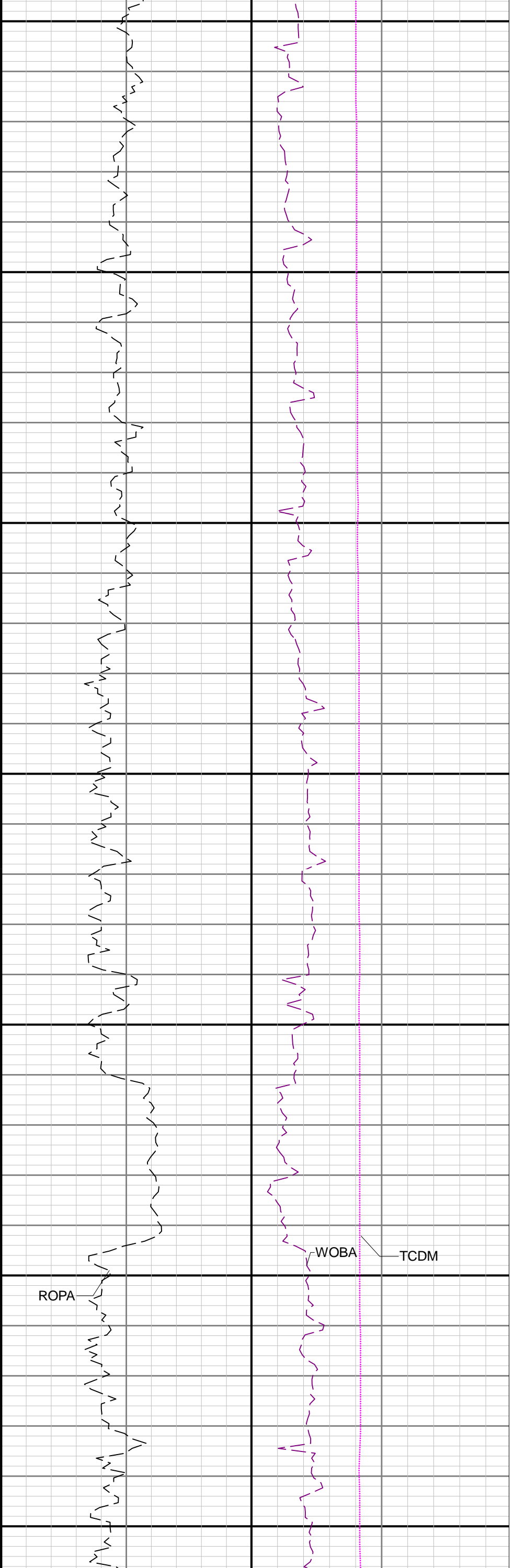
2200

2300

2400







2800

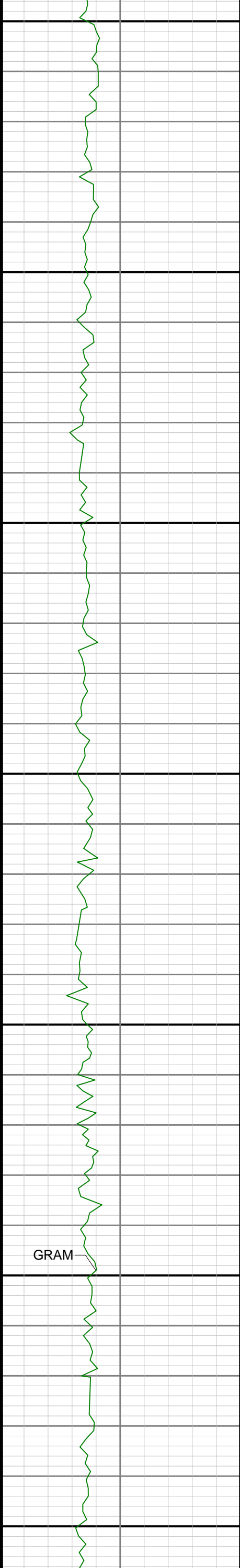
2900

3000

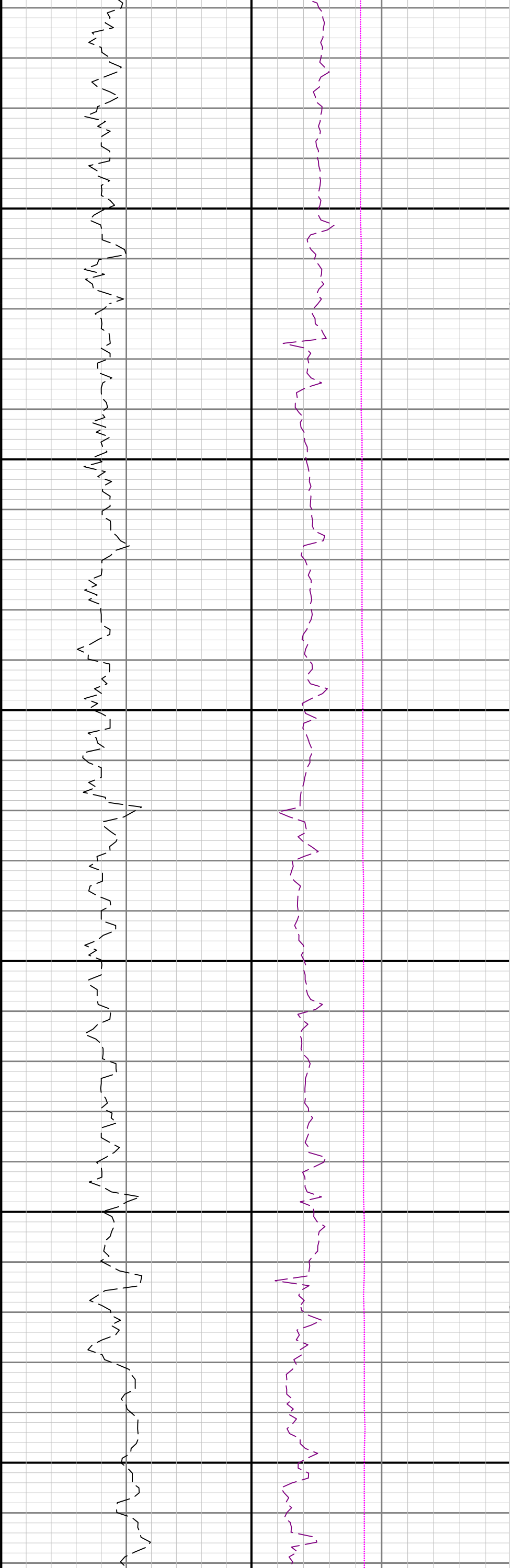
ROPA

WOBA

TCDM



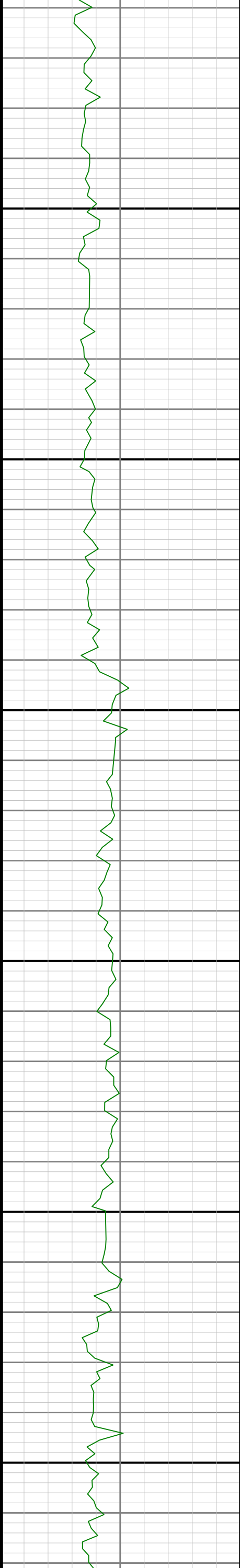
GRAM

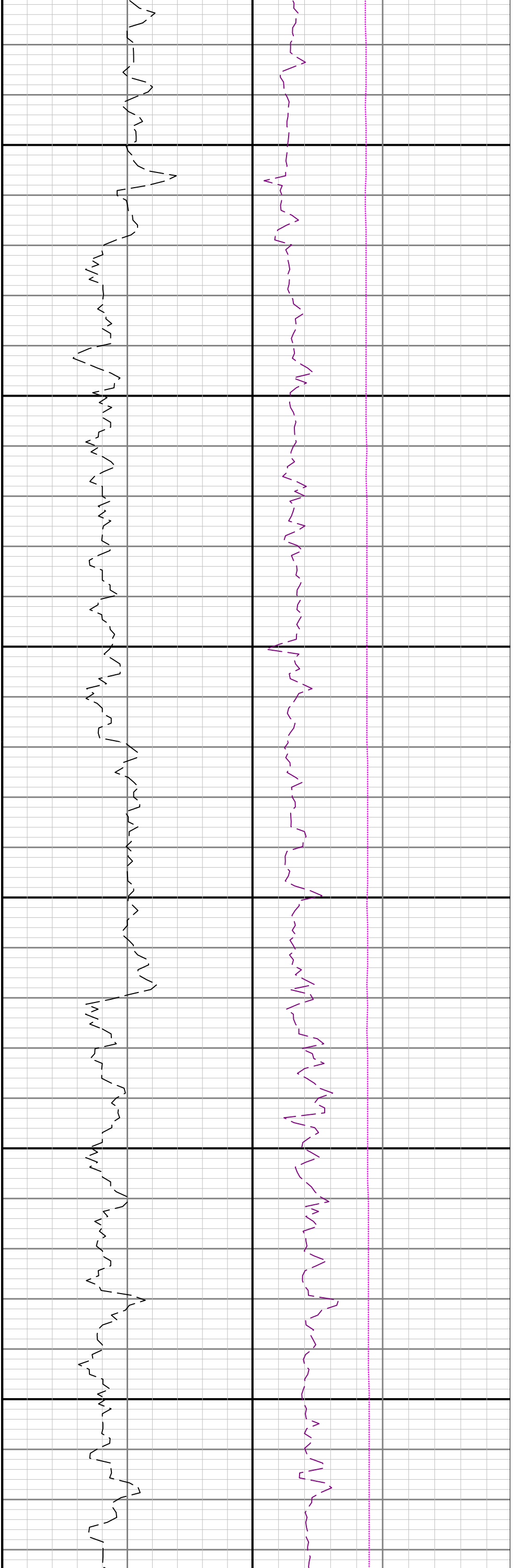


3100

3200

3300

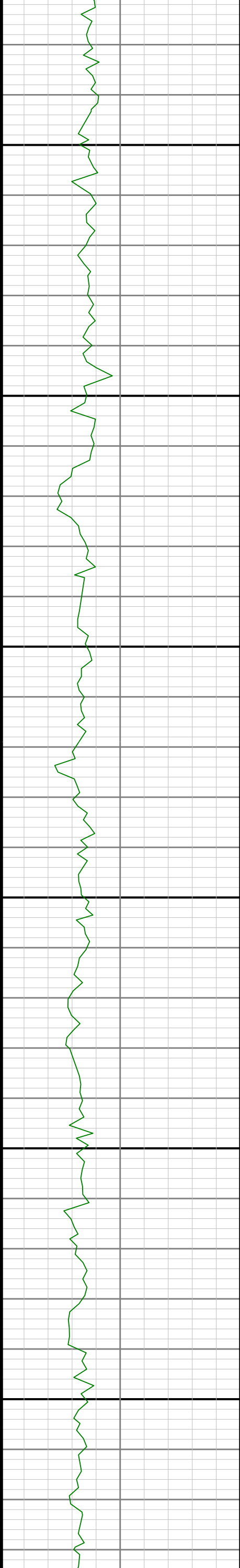


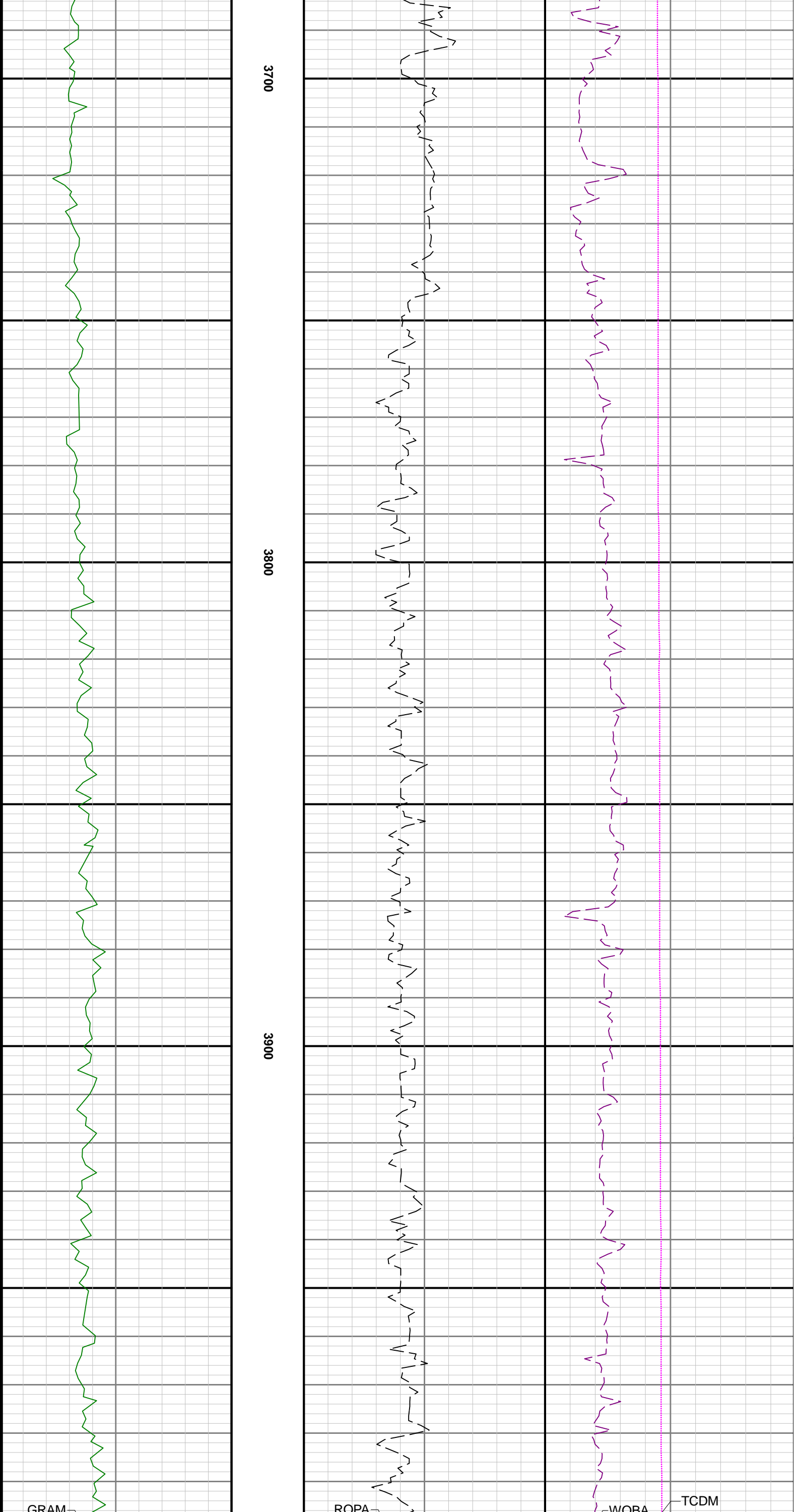


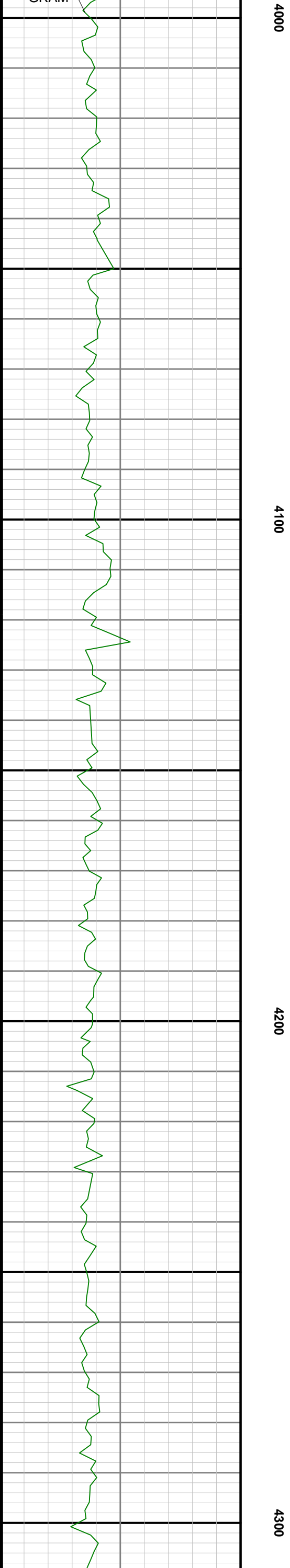
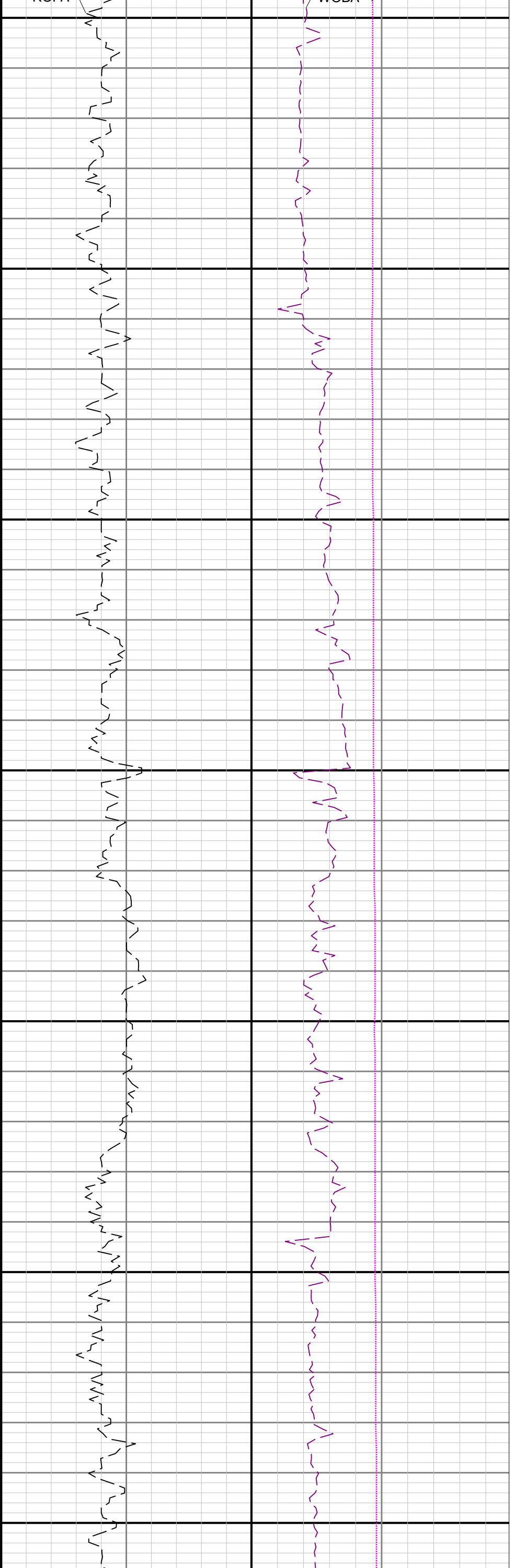
3400

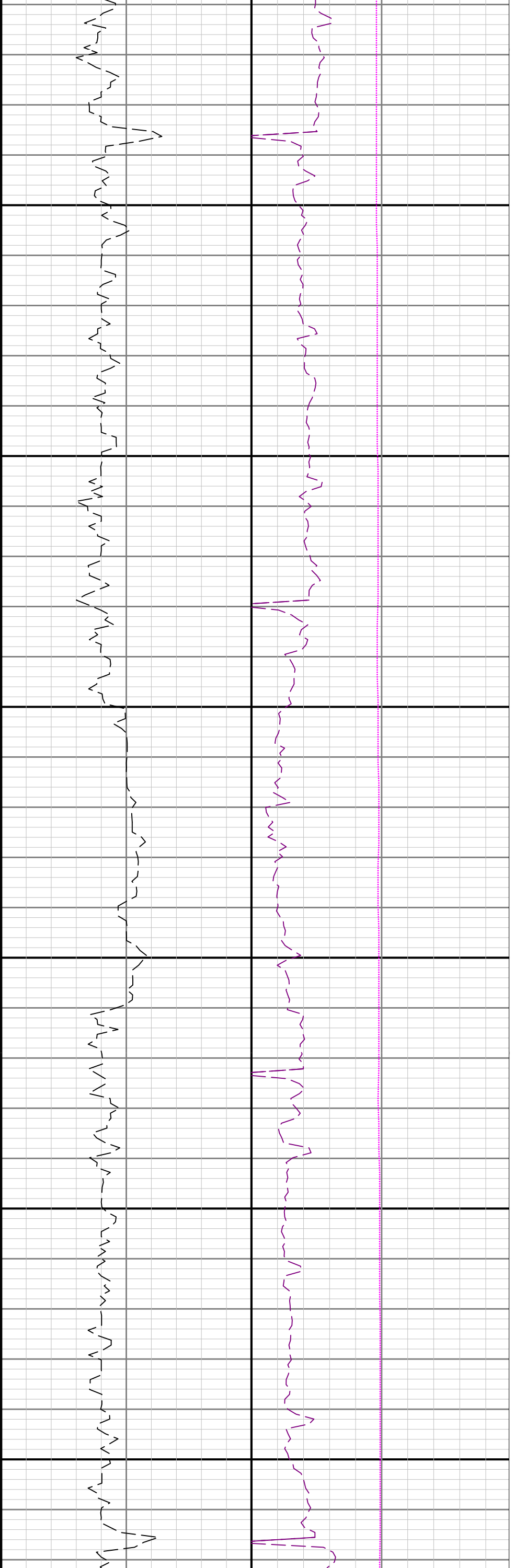
3500

3600





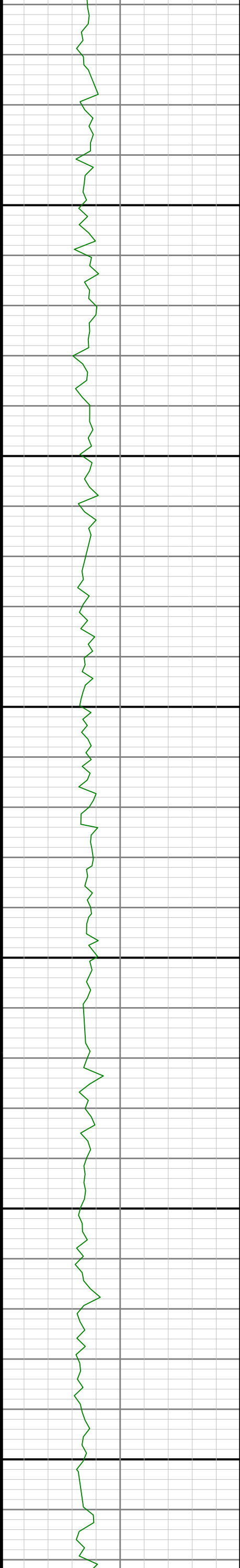


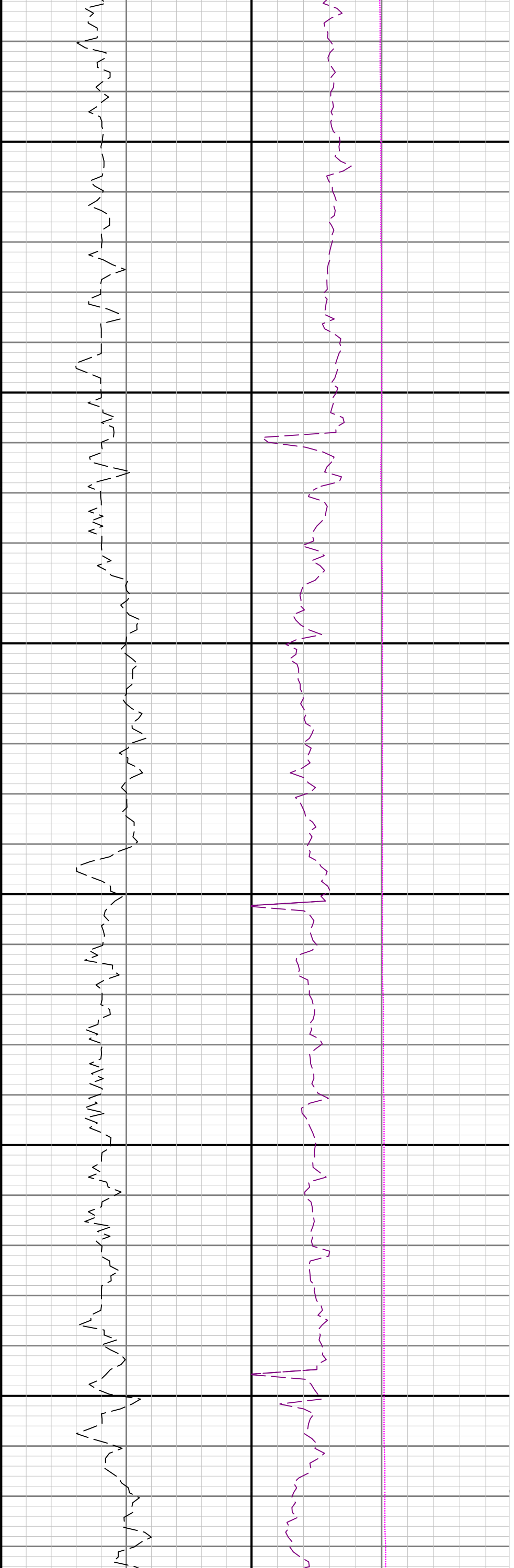


4400

4500

4600

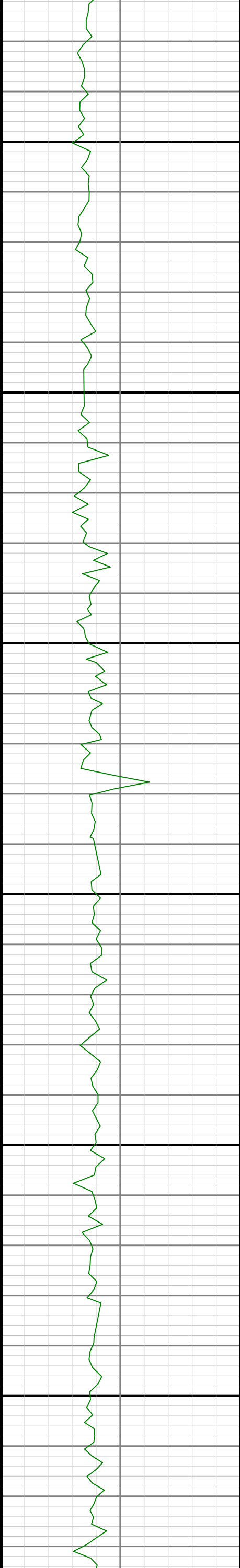


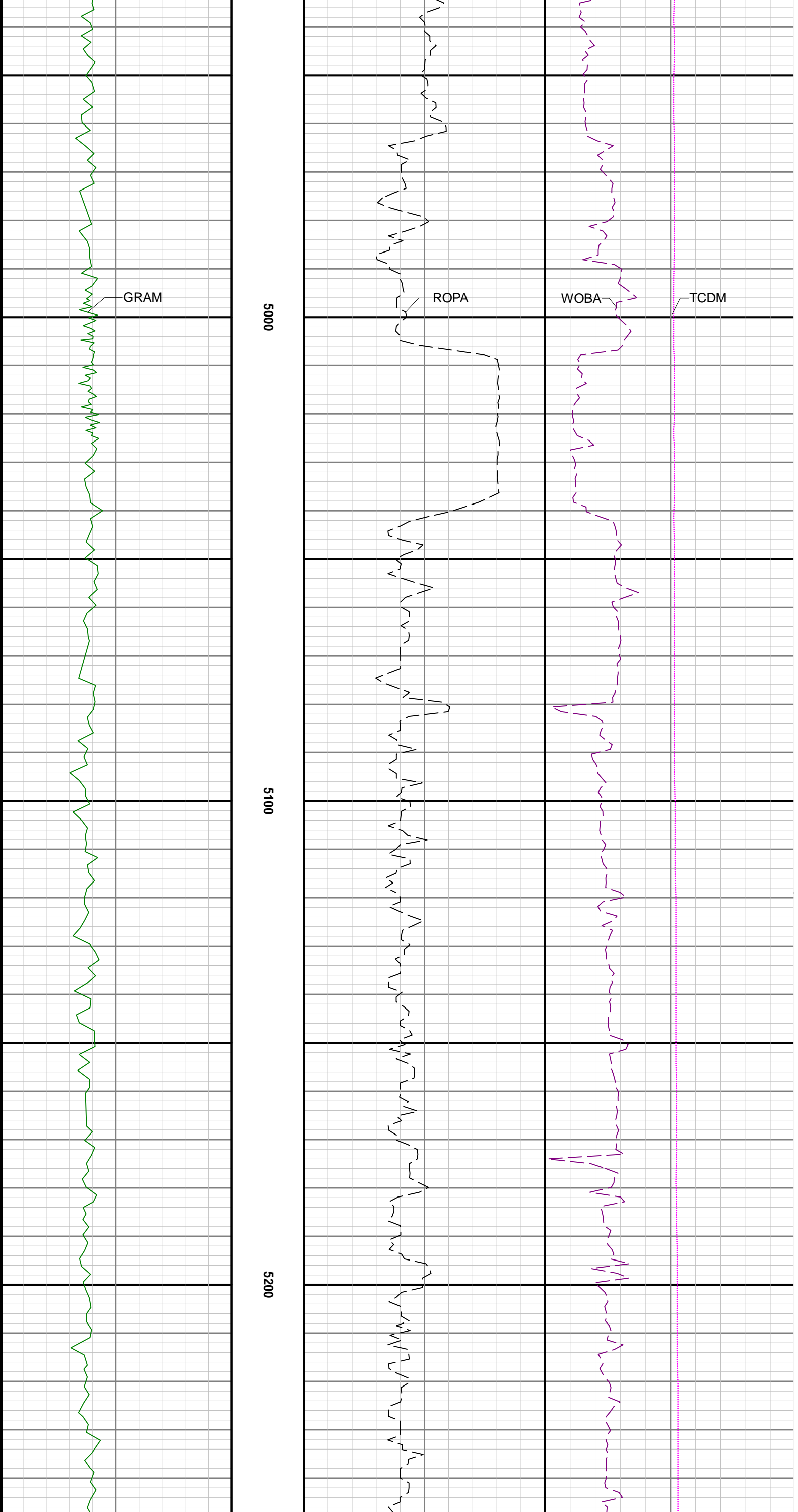


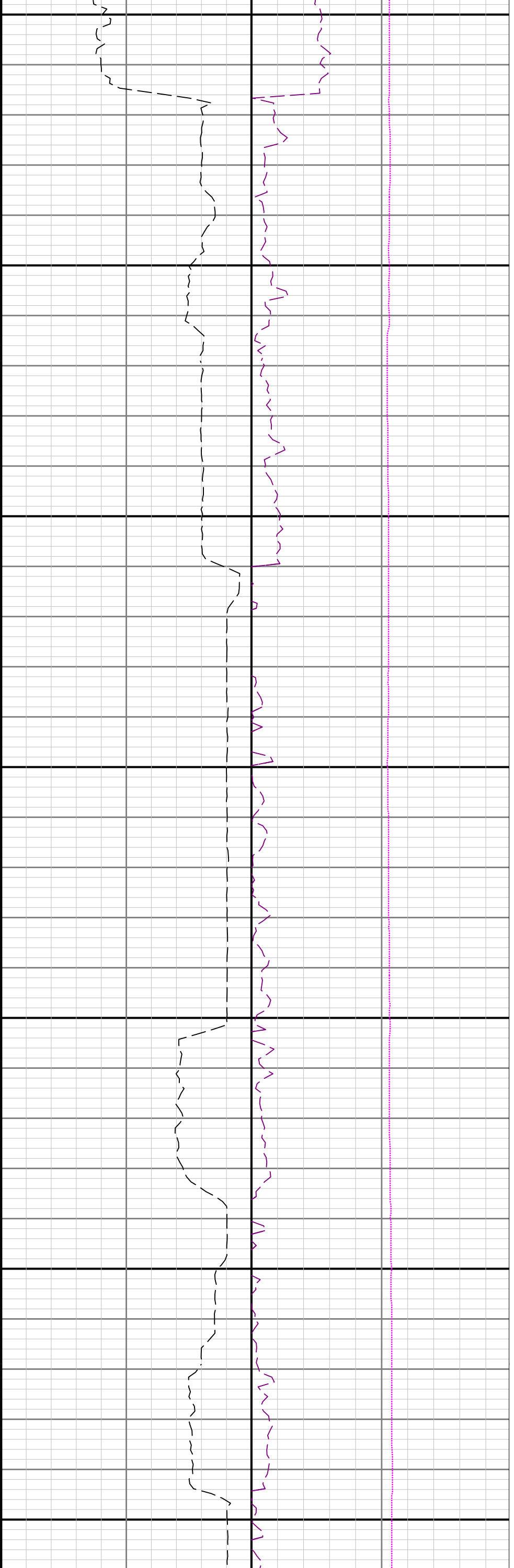
4700

4800

4900



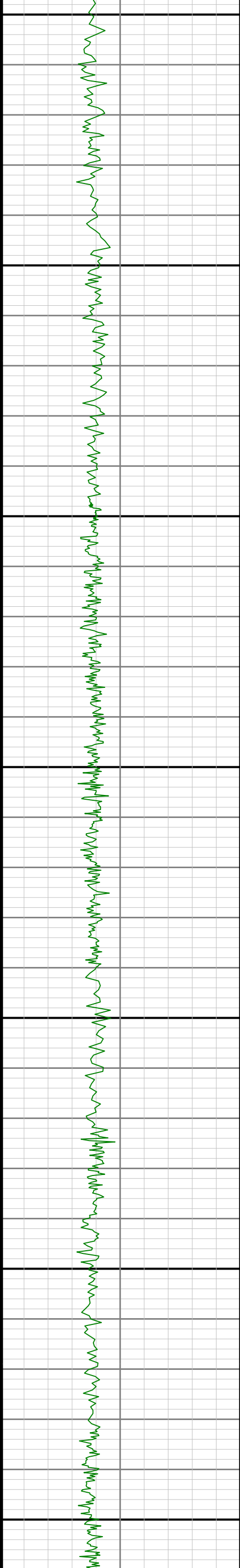


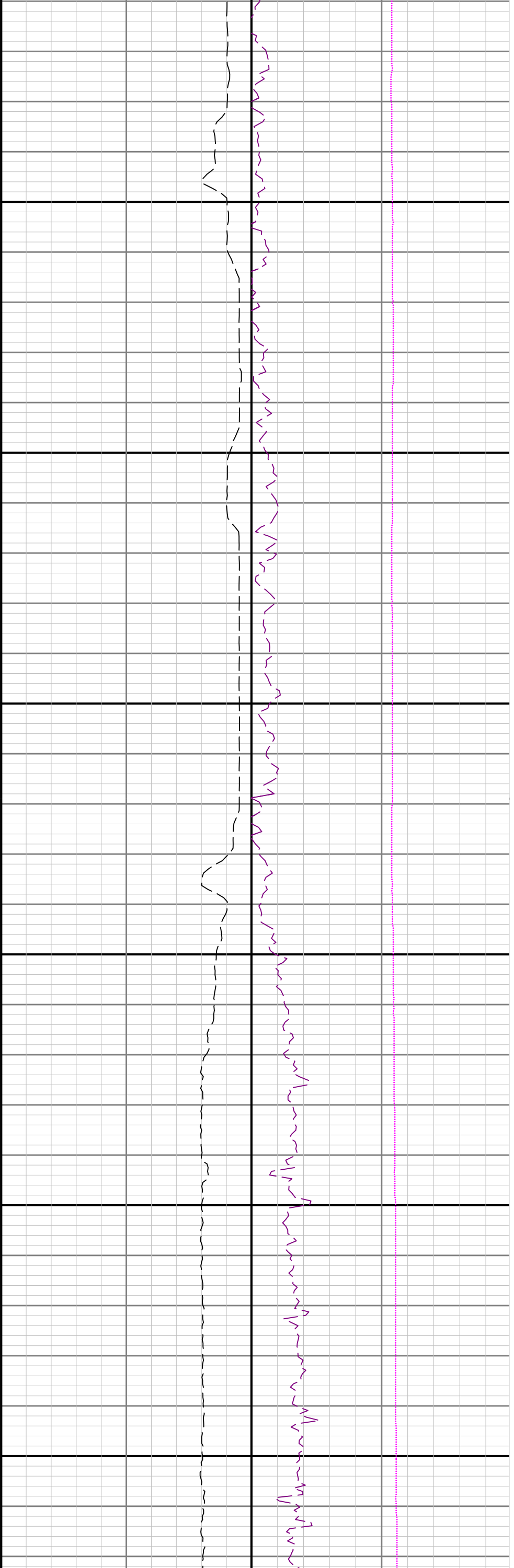


5300

5400

5500

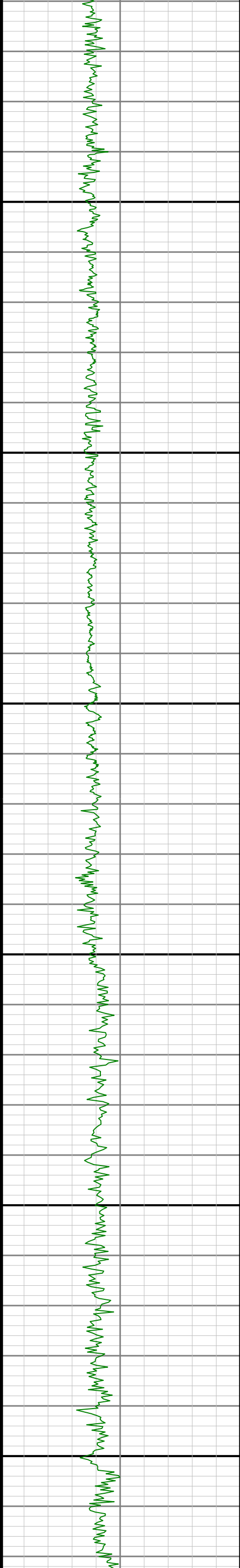


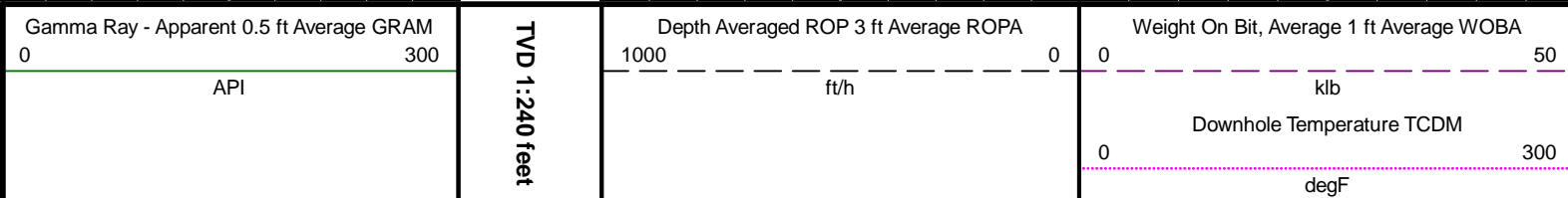


5600

5700

5800





Tie-In / Projection	Measured Depth (ft)	Inclination (deg)	Azimuth (deg)	Temperature (degF)	North (ft)	East (ft)	True Vertical Depth (ft)	Vertical Section (ft)	Course Length (ft)	Dog Leg Severity (deg/100ft)	Build Rate (deg/100ft)	Turn Rate (deg/100ft)
Tie-In	0.00	0.00	0.00	N/A	0.00	0.00	0.00	0.00	0.00	0.00	0.00	0.00
	80.00	0.09	324.61	N/A	0.05	-0.04	80.00	-0.05	80.00	0.11	0.11	-44.24
	175.00	0.30	125.19	N/A	-0.03	0.12	175.00	0.04	95.00	0.41	0.22	169.03
	269.00	0.07	54.77	N/A	-0.14	0.37	269.00	0.17	94.00	0.30	-0.24	-74.91
	364.00	0.22	262.90	N/A	-0.13	0.24	364.00	0.15	95.00	0.30	0.16	-159.86
	459.00	0.15	287.14	N/A	-0.11	-0.06	459.00	0.11	95.00	0.11	-0.07	25.52
	553.00	0.22	9.21	N/A	0.10	-0.15	553.00	-0.11	94.00	0.26	0.07	87.31
	648.00	0.17	18.21	N/A	0.41	-0.08	648.00	-0.42	95.00	0.06	-0.05	9.47
	742.00	0.26	106.40	N/A	0.49	0.17	742.00	-0.47	94.00	0.33	0.10	93.82
	837.00	0.61	68.03	N/A	0.61	0.85	836.99	-0.53	95.00	0.46	0.37	-40.39
	931.00	0.21	69.50	N/A	0.86	1.47	930.99	-0.72	94.00	0.43	-0.43	1.56
	1026.00	0.45	78.48	N/A	1.00	2.00	1025.99	-0.80	95.00	0.26	0.25	9.45
	1121.00	0.20	24.72	N/A	1.22	2.44	1120.99	-0.98	95.00	0.39	-0.26	-56.59
	1215.00	0.08	131.16	N/A	1.33	2.55	1214.99	-1.08	94.00	0.25	-0.13	113.23
	1310.00	0.45	313.82	N/A	1.54	2.33	1309.99	-1.31	95.00	0.56	0.39	-186.67
	1405.00	0.21	148.88	N/A	1.65	2.16	1404.99	-1.44	95.00	0.69	-0.25	-173.62
	1499.00	0.13	289.68	N/A	1.54	2.14	1498.99	-1.33	94.00	0.34	-0.09	149.79
	1594.00	0.06	284.59	N/A	1.59	1.99	1593.99	-1.39	95.00	0.07	-0.07	-5.36
	1688.00	0.08	136.78	N/A	1.55	1.99	1687.99	-1.36	94.00	0.14	0.02	-157.24
	1783.00	0.06	115.84	N/A	1.48	2.08	1782.99	-1.28	95.00	0.03	-0.02	-22.04
	1878.00	0.37	28.93	N/A	1.73	2.27	1877.99	-1.51	95.00	0.39	0.33	-91.48
	1902.00	0.48	26.78	N/A	1.89	2.36	1901.99	-1.65	24.00	0.46	0.46	-8.96
	1982.00	0.89	332.56	N/A	2.74	2.22	1981.98	-2.51	80.00	0.90	0.51	-67.77

	10842.00	88.40	178.24	N/A	-4525.60	444.35	6027.77	4547.35	65.00	0.98	-0.23	0.95
Projection	10866.00	88.40	178.24	N/A	-4549.58	445.09	6028.44	4571.29	24.00	0.00	0.00	0.00