



Kerr-McGee Oil & Gas Onshore LP

A subsidiary of Anadarko Petroleum Corporation

1099 18th Street
Denver, CO 80202
720-929-6000

April 24, 2017

Matt Lepore
Director, Colorado Oil and Gas Conservation Commission
Department of Natural Resources
The Chancery Building
1120 Lincoln Street, Suite 801
Denver, CO 80203

Re: **30 Day Certification Letter - 318A.e**
HAMMER 3-3HZ (Doc # 401251217)
Township 1 North, Range 68 West
Section 3: SWSW
Unit Acreage: 320
Unit Spacing: 1N-68W SEC 3: NWSW, W2NW
2N-68W SEC 34: W2W2
2N-68W SEC 27: SWSW
Weld County, Colorado

Dear Director Lepore:

Kerr-McGee Oil and Gas Onshore LP (“KMG”) hereby certifies that a thirty (30) day notice has been given by certified mail to all mineral owners in the proposed wellbore spacing unit. We have not received any objections to such well location or proposed spacing unit. KMG hereby respectfully requests approval of this boundary well.

If you have any questions or issues regarding this permit, please contact me at (720) 929-6907.

Sincerely,

KERR-McGEE OIL AND GAS ONSHORE LP

A handwritten signature in black ink that reads "Shayelyn Marshall".

Shayelyn Marshall
Regulatory Analyst II

PROPOSED SPACING UNIT

T1N, R68W

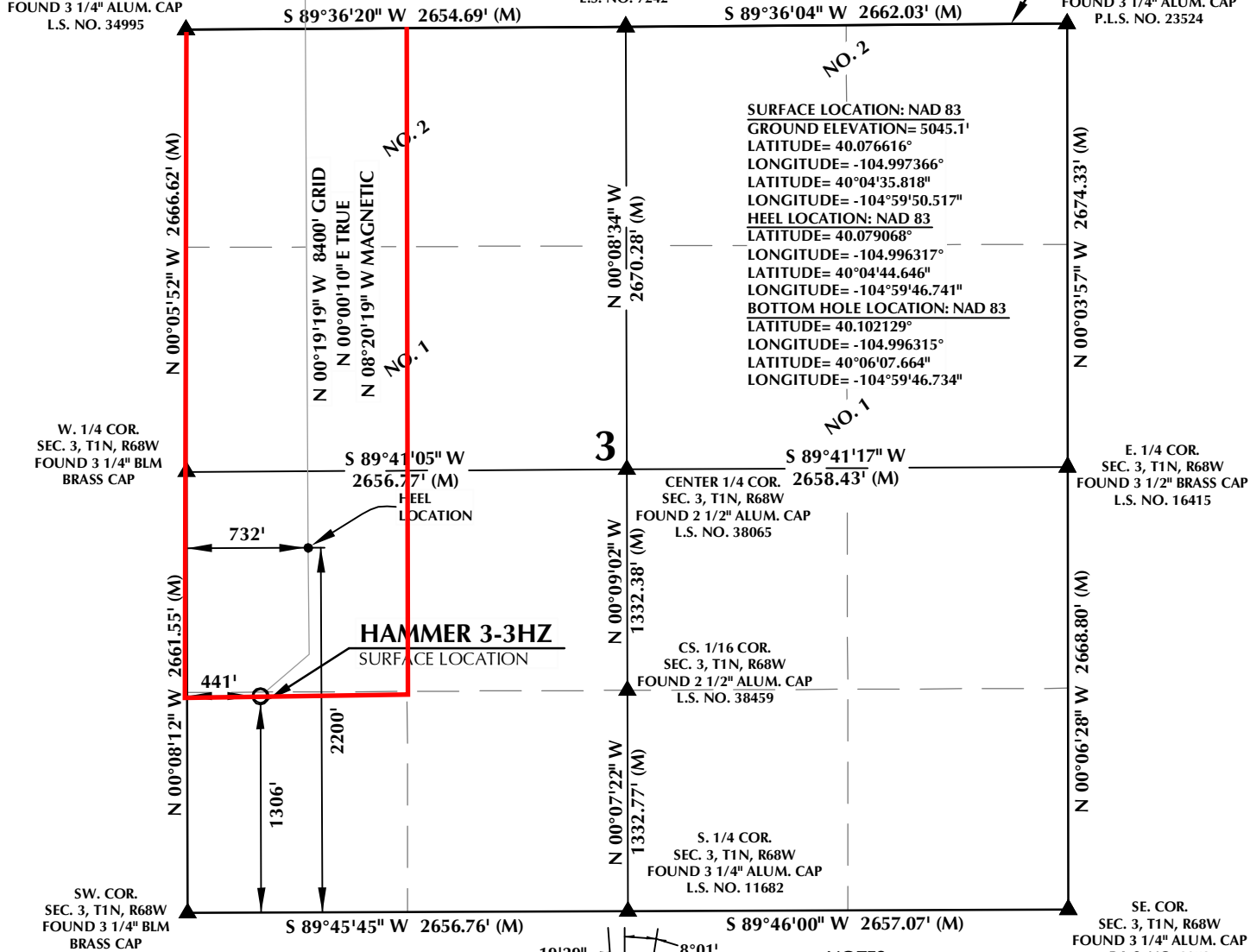
WELLBORE CONTINUES INTO SECTION 34, T2N, R68W

MATCH LINE SEE SHEET 2

NW. COR.
SEC. 3, T1N, R68W
FOUND 3 1/4" ALUM. CAP
L.S. NO. 34995

N. 1/4 COR.
SEC. 3, T1N, R68W
FOUND 3 1/4" ALUM. CAP
L.S. NO. 7242

NE. COR.
SEC. 3, T1N, R68W
FOUND 3 1/4" ALUM. CAP
P.L.S. NO. 23524



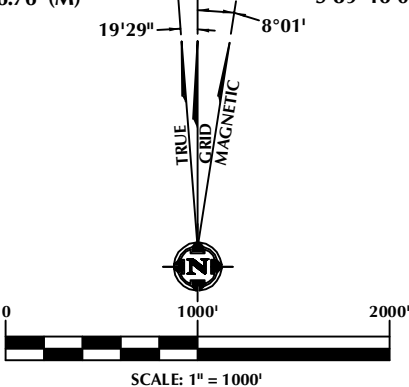
SURFACE LOCATION: NAD 83
GROUND ELEVATION= 5045.1'
LATITUDE= 40.076616°
LONGITUDE= -104.997366°
LATITUDE= 40°04'35.818"
LONGITUDE= -104°59'50.517"
HEEL LOCATION: NAD 83
LATITUDE= 40.079068°
LONGITUDE= -104.996317°
LATITUDE= 40°04'44.646"
LONGITUDE= -104°59'46.741"
BOTTOM HOLE LOCATION: NAD 83
LATITUDE= 40.102129°
LONGITUDE= -104.996315°
LATITUDE= 40°06'07.664"
LONGITUDE= -104°59'46.734"

CERTIFICATE OF SURVEYOR:

THIS IS TO CERTIFY THAT THE ABOVE PLAT WAS PREPARED FROM FIELD NOTES OF ACTUAL SURVEY MADE BY ME OR UNDER MY SUPERVISION AND THAT THE SAME ARE TRUE AND CORRECT TO THE BEST OF MY KNOWLEDGE AND BELIEF. THIS CERTIFICATE DOES NOT REPRESENT A LAND SURVEY, PLAT OR IMPROVEMENT SURVEY PLAT AS DEFINED BY C.R.S. 38-51-302 AND CANNOT BE RELIED UPON TO DETERMINE OWNERSHIP.

Randall K. French
PROFESSIONAL LAND SURVEYOR
COLORADO REGISTRATION NUMBER 38512
2/20/17

NOTICE: ACCORDING TO COLORADO STATE LAW YOU MUST COMMENCE ANY LEGAL ACTION BASED UPON ANY DEFECT IN THIS SURVEY WITHIN THREE YEARS AFTER YOU FIRST DISCOVER SUCH DEFECT. IN NO EVENT MAY ANY ACTION BASED UPON ANY DEFECT IN THIS SURVEY BE COMMENCED MORE THAN TEN YEARS FROM THE DATE ON THE CERTIFICATION SHOWN HEREON.



NOTE: MAGNETIC NORTH IS CURRENT AS OF 2/13/2017. MAGNETIC NORTH CHANGES WEST 0°06' PER YEAR.

NOTES:

- ▲ INDICATES SECTION CORNER
- INDICATES CALCULATED CORNER
- ELEVATION BASED ON NAVD88 (GEOID12B)
- BASIS OF BEARING DERIVED FROM COLORADO COORDINATE SYSTEM OF 1983 NORTH ZONE.
- ALL MEASURED DISTANCES ARE GRID. COMBINED SCALE FACTOR: .99972258 CALCULATED FROM THE SW. CORNER OF SECTION 3, T1N, R68W
- OPERATOR: ROB WILSON / PDOP = 1.2
- SEE ADDENDUM TO WELL LOCATION CERTIFICATE FOR EXISTING IMPROVEMENTS WITHIN 500' OF THE WELL PAD.
- WELL FOOTAGES ARE MEASURED AT RIGHT ANGLES TO THE SECTION LINES.
- THE BOTTOM OF HOLE BEARS N00°19'19"W, 8400' FROM THE HEEL LOCATION.
- NO. 1 & NO. 2 AS SHOWN HEREON ARE GOVERNMENT LOTS 1 & 2 PER THE ORIGINAL GLO SURVEY

WELL PAD - HAMMER 3-5HZ

HAMMER 3-3HZ
LOCATION CERTIFICATE
1306' FSL & 441' FWL SWSW (SURFACE)
2200' FSL & 732' FWL NWSW (HEEL)
LOCATED IN SECTION 3
T1N, R68W, 6TH P.M.
52' FNL & 701' FWL NWNW (BOTTOM)
LOCATED IN SECTION 34
T2N, R68W, 6TH P.M.
WELD COUNTY, COLORADO

Kerr-McGee Oil & Gas Onshore L.P.
1099 18th Street
Denver, Colorado 80202



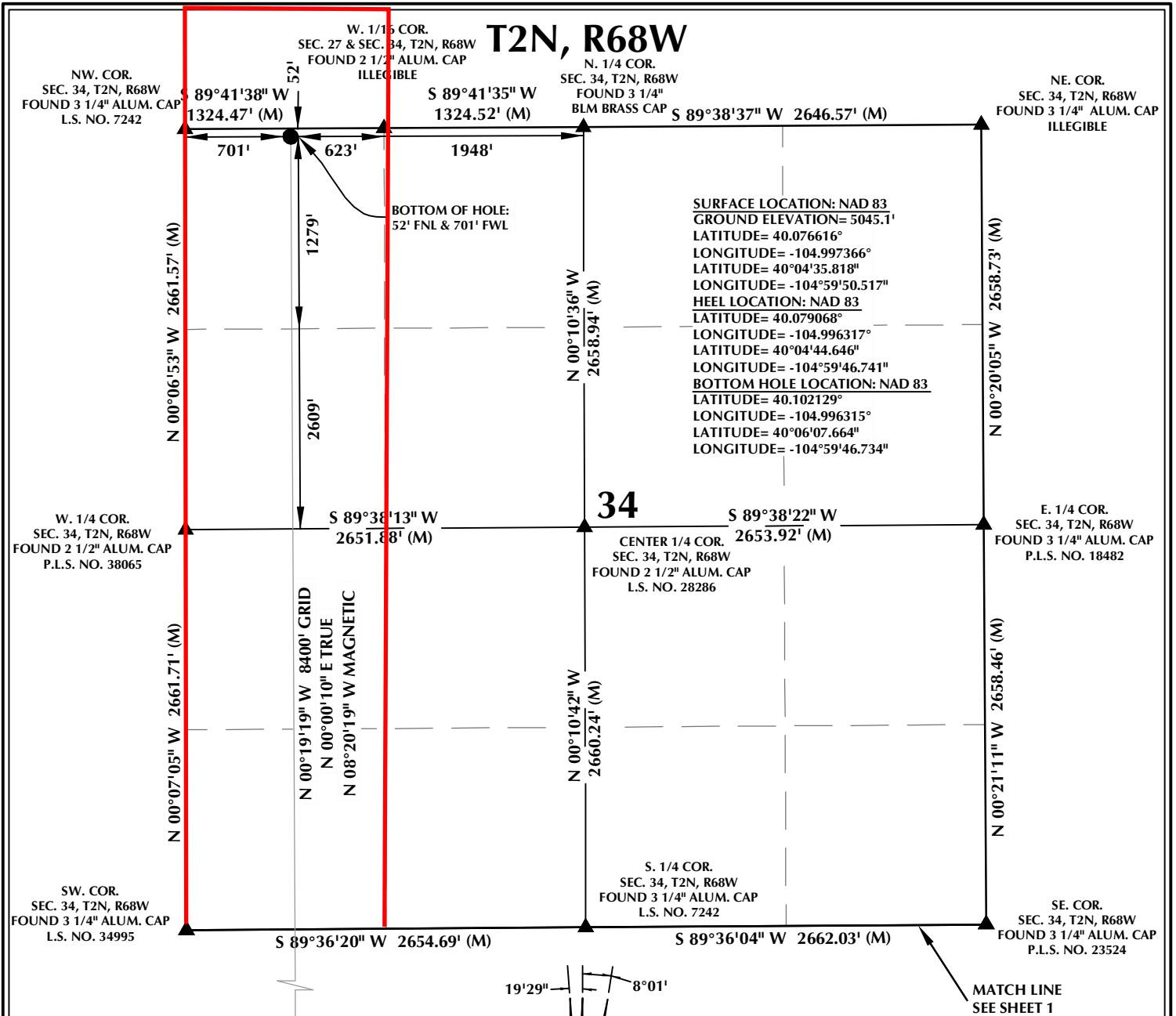
CONSULTING, LLC

SHERIDAN OFFICE
1095 Saberton Avenue
Sheridan, Wyoming 82801
Phone 307-674-0609

LOVELAND OFFICE
1635 Foxtrail Drive, Suite 204
Loveland, Colorado 80538
Phone 970-776-4331

DRAFTED BY: LMO	CHECKED BY: RKF	SHEET NO: 1 1 OF 2
DATE DRAFTED: 2/20/17	DATE SURVEYED: 12/15/16	
REVISED:	FILE NAME: 14-106	

PROPOSED SPACING UNIT

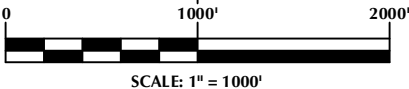
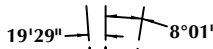


CERTIFICATE OF SURVEYOR:

THIS IS TO CERTIFY THAT THE ABOVE PLAT WAS PREPARED FROM FIELD NOTES OF ACTUAL SURVEY MADE BY ME OR UNDER MY SUPERVISION AND THAT THE SAME ARE TRUE AND CORRECT TO THE BEST OF MY KNOWLEDGE AND BELIEF. THIS CERTIFICATE DOES NOT REPRESENT A LAND SURVEY PLAT OR IMPROVEMENT SURVEY PLAT AS DEFINED BY C.R.S. 38-51-302 AND CANNOT BE RELIED UPON TO DETERMINE OWNERSHIP.

Randall K. French
 RANDALL K. FRENCH
 PROFESSIONAL LAND SURVEYOR
 COLORADO REGISTRATION NUMBER 38512

NOTICE:
 ACCORDING TO COLORADO STATE LAW YOU MUST COMMENCE ANY LEGAL ACTION BASED UPON ANY DEFECT IN THIS SURVEY WITHIN THREE YEARS AFTER YOU FIRST DISCOVER SUCH DEFECT. IN NO EVENT MAY ANY ACTION BASED UPON ANY DEFECT IN THIS SURVEY BE COMMENCED MORE THAN TEN YEARS FROM THE DATE ON THE CERTIFICATION SHOWN HEREON.



NOTE:
 MAGNETIC NORTH IS CURRENT AS OF 2/13/2017.
 MAGNETIC NORTH CHANGES WEST 0°06' PER YEAR.

NOTES:

- ▲ INDICATES SECTION CORNER
- INDICATES CALCULATED CORNER
- ELEVATION BASED ON NAVD88 (GEOID12B)
- BASIS OF BEARING DERIVED FROM COLORADO COORDINATE SYSTEM OF 1983 NORTH ZONE.
- ALL MEASURED DISTANCES ARE GRID.
- COMBINED SCALE FACTOR: .99972258 CALCULATED FROM THE SW. CORNER OF SECTION 3, T1N, R68W
 OPERATOR: ROB WILSON / PDOP = 1.2
- SEE ADDENDUM TO WELL LOCATION CERTIFICATE FOR EXISTING IMPROVEMENTS WITHIN 500' OF THE WELL PAD.
- WELL FOOTAGES ARE MEASURED AT RIGHT ANGLES TO THE SECTION LINES.
- THE BOTTOM OF HOLE BEARS N00°19'19"W, 8400' FROM THE HEEL LOCATION.

WELL PAD - HAMMER 3-5HZ

HAMMER 3-3HZ
 LOCATION CERTIFICATE
 1306' FSL & 441' FWL SWSW (SURFACE)
 2200' FSL & 732' FWL NWSW (HEEL)
 LOCATED IN SECTION 3
 T1N, R68W, 6TH P.M.
 52' FNL & 701' FWL NWNW (BOTTOM)
 LOCATED IN SECTION 34
 T2N, R68W, 6TH P.M.
 WELD COUNTY, COLORADO

Kerr-McGee Oil & Gas Onshore L.P.
 1099 18th Street
 Denver, Colorado 80202



CONSULTING, LLC

SHERIDAN OFFICE
 1095 Saberton Avenue
 Sheridan, Wyoming 82801
 Phone 307-674-0609

LOVELAND OFFICE
 1635 Foxtrail Drive, Suite 204
 Loveland, Colorado 80538
 Phone 970-776-4331

DRAFTED BY:	LMO	CHECKED BY:	RKF	SHEET NO:
DATE DRAFTED:	2/20/17	DATE SURVEYED:	12/15/16	2
REVISED:		FILE NAME:	14-106	2 OF 2