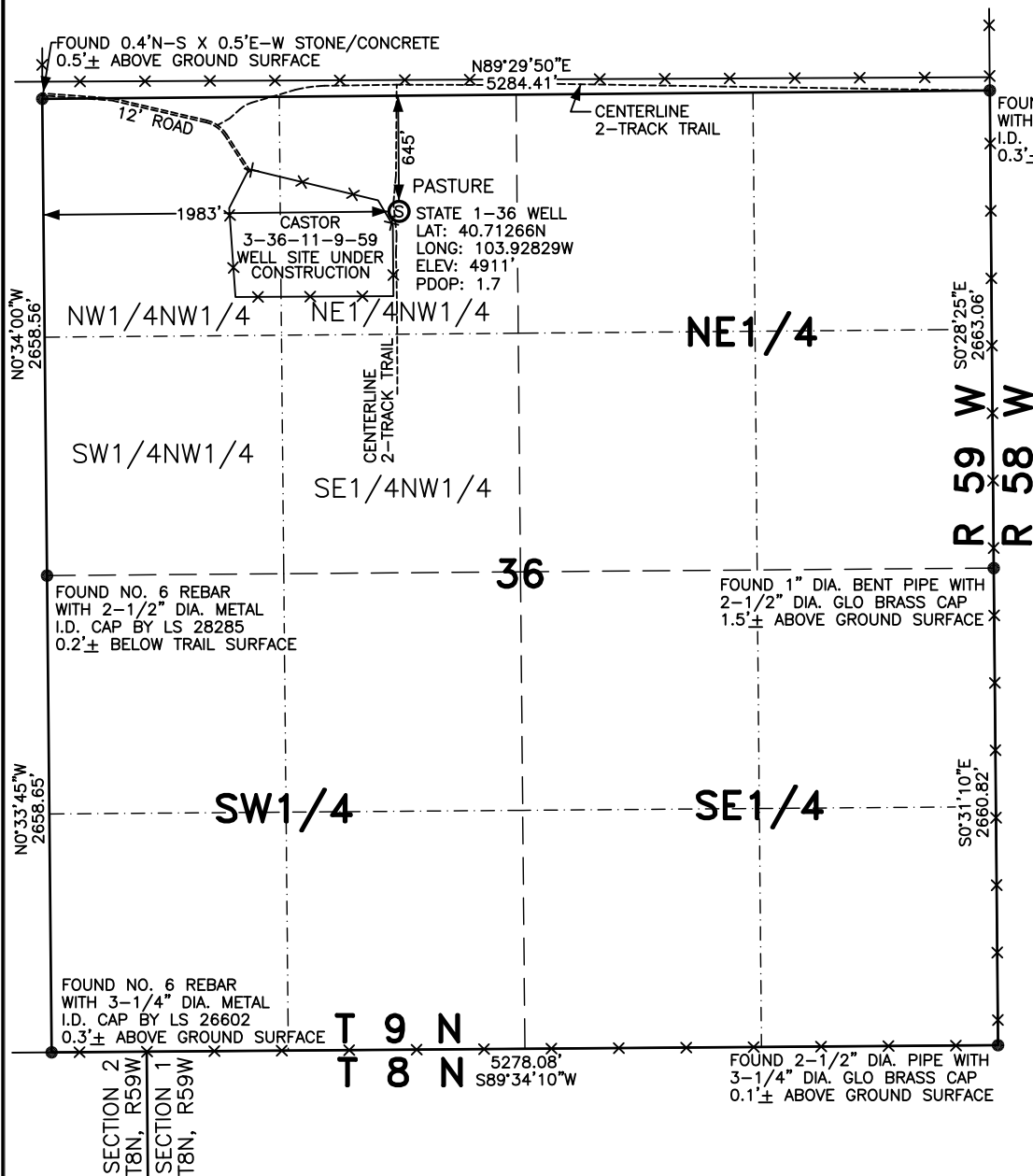


WELL LOCATION FOR CARRIZO OIL & GAS, INC.

STATE 1-36



NOTES

BEARINGS SHOWN HEREON ARE
BASED UPON RTK GPS
OBSERVATIONS

THERE ARE NO VISIBLE
IMPROVEMENTS WITHIN 600' OF
LOCATION.

USGS QUAD MAP:
RAYMER NW, COLO.

LAT/LONG VALUES ARE NAD83

ELEVATIONS BASED UPON NGS
OPUS SOLUTION NAVD 88 DATUM

ALL DISTANCES TO SECTION LINES
ARE MEASURED PERPENDICULAR
TO AND ARE AT RIGHT ANGLES
TO SAID SECTION LINES.

LEGEND

⊙ FIELD SURVEYED
WELL LOCATION

--- ROAD

--- FENCE



SCALE: 1" = 1000'



SCALE IN FEET



LEIBERT-McATEE & ASSOCIATES, INC.

P.O. BOX 442 615 SOUTH TENTH AVENUE
STERLING, CO 80751 970-522-1960

FIELD DATE: 6-13-13	DWG DATE: 6-18-13	GPS OPERATOR: DARREN VEAL
STATE 1-36	DWG NO. 670-13	SHEET 1 OF 1