

# HALLIBURTON

iCem<sup>®</sup> Service

## **BILL BARRETT CORPORATION E-BILL**

**For: Nathan**

Date: Friday, April 21, 2017

**903985523 BBC Rein 11-32**

903985523 BBCRein 11-32

Case 1

Job Date: Friday, April 21, 2017

Sincerely,

**Nathaniel Moore**

## Legal Notice

---

### Warning Disclaimer

Although the information contained in this report is based on sound engineering practices, the copyright owner(s) does (do) not accept any responsibility whatsoever, in negligence or otherwise, for any loss or damage arising from the possession or use of the report whether in terms of correctness or otherwise. The application, therefore, by the user of this report or any part thereof, is solely at the user's own risk.

### Limitations of Liability

Except as expressly set forth herein, there are no representations or warranties by Halliburton, express or implied, including implied warranties of merchantability and/or fitness for a particular purpose. In no event will Halliburton or its suppliers be liable for consequential, incidental, special, punitive or exemplary damages (including, without limitation, loss of data, profits, use of hardware, or software). Customer accepts full responsibility for any investment made based on results from the Software. Any interpretations, analyses or modeling of any data, including, but not limited to Customer data, and any recommendation or decisions based upon such interpretations, analyses or modeling are opinions based upon inferences from measurements and empirical relationships and assumptions, which inferences and assumptions are not infallible, and with respect to which professional may differ. Accordingly, Halliburton cannot and does not warrant the accuracy, correctness or completeness of any such interpretation, recommendation, modeling or other products of the Software Product. As such, any interpretation, recommendation or modeling resulting from the Software for the purpose of any drilling, well treatment, production or financial decision will be at the sole risk of Customer. Under no circumstances will Halliburton or its suppliers be liable for any damages.

Table of Contents

---

Real-Time Job Summary.....

    Job Event Log.....

Attachments .....

    Case 1-Custom Results.png.....

Custom Graphs.....

    Custom Graph.....

## 1.0 Real-Time Job Summary

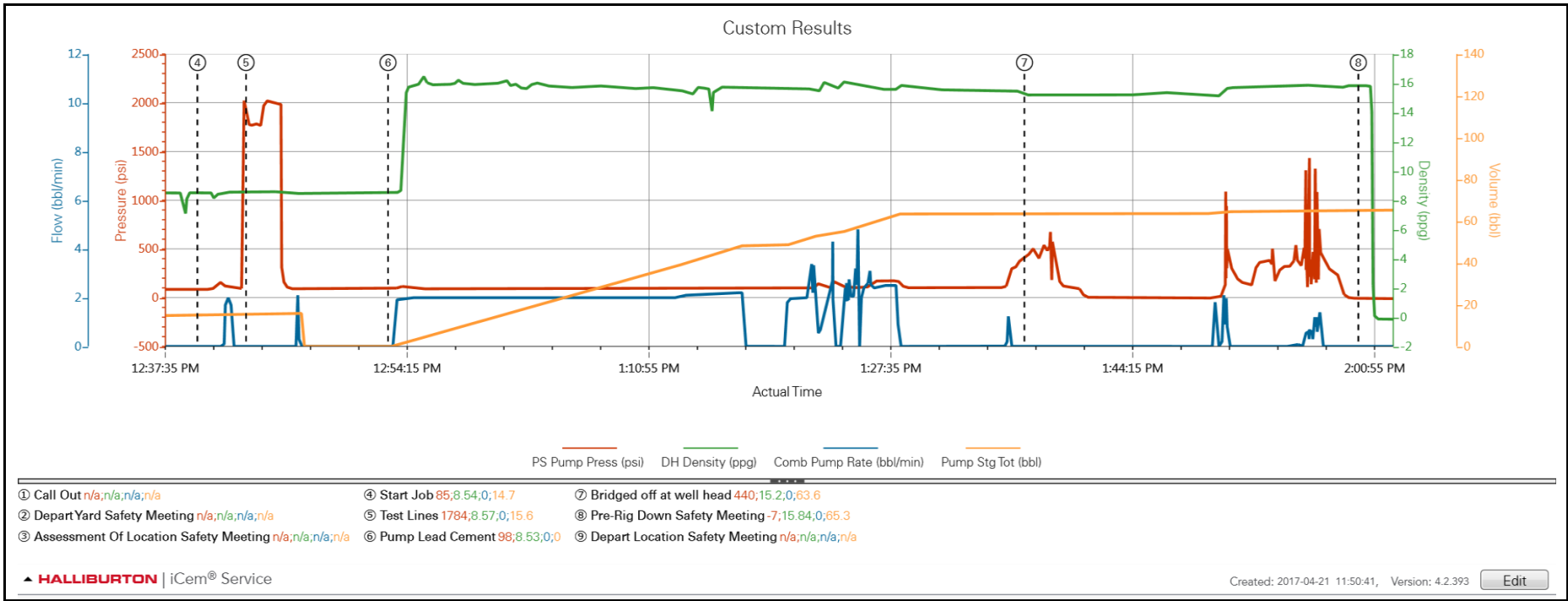
## 1.1 Job Event Log

Type	Seq. No.	Activity	Graph Label	Date	Time	Source	Pass-Side Pump Pressure (psi)	Downhole Density (ppg)	Combined Pump Rate (bbl/min)	Pump Stage Total (bbl)	Comments
Event	1	Call Out	Call Out	4/21/2017	08:00:00	USER					OL time asap
Event	2	Depart Yard Safety Meeting	Depart Yard Safety Meeting	4/21/2017	09:30:00	USER					
Event	3	Assessment Of Location Safety Meeting	Assessment Of Location Safety Meeting	4/21/2017	11:00:00	USER					Spot in and rig up equipment. Had to chain up to get on location. Tubing at 520' 2.875" tubing inside 8.625" 24# surface casing. Pump cemen to surface then top out.
Event	4	Start Job	Start Job	4/21/2017	12:40:00	COM1	85.00	8.54	0.00	14.7	Fill lines and establish circulation. 3 bbl water
Event	5	Test Lines	Test Lines	4/21/2017	12:43:20	USER	1784.00	8.57	0.00	15.6	500 psi kickout test and 2000 psi pressure test
Event	6	Pump Lead Cement	Pump Lead Cement	4/21/2017	12:53:07	COM1	98.00	8.53	0.00	0.0	Pumped 190 sks/39 bbl 15.8 ppg 1.15 ft3/sk 5.0 gal/sk
Event	7	Other	Bridged off at well head	4/21/2017	13:36:59	USER	440.00	15.20	0.00	63.6	Lost returns and pressured up on tubing. Pulled one stand and tried to pump again. Still bridged at well head. Tied iron into flow line and pumped to clear then tied back onto tubing and pressured up again. Could not break circulation. Shutdown and rig pulled tubing. Will tag cement tomorrow morning and finish topping out.

Event	8	Pre-Rig Down Safety Meeting	Pre-Rig Down Safety Meeting	4/21/2017	14:00:00	USER	-7.00	15.84	0.00	65.3	Washed pumps and lines and cleaned tubing for rig.
Event	9	Depart Location Safety Meeting	Depart Location Safety Meeting	4/21/2017	16:00:00	USER					

2.0 Attachments

2.1 Case 1-Custom Results.png



## 3.0 Custom Graphs

### 3.1 Custom Graph

