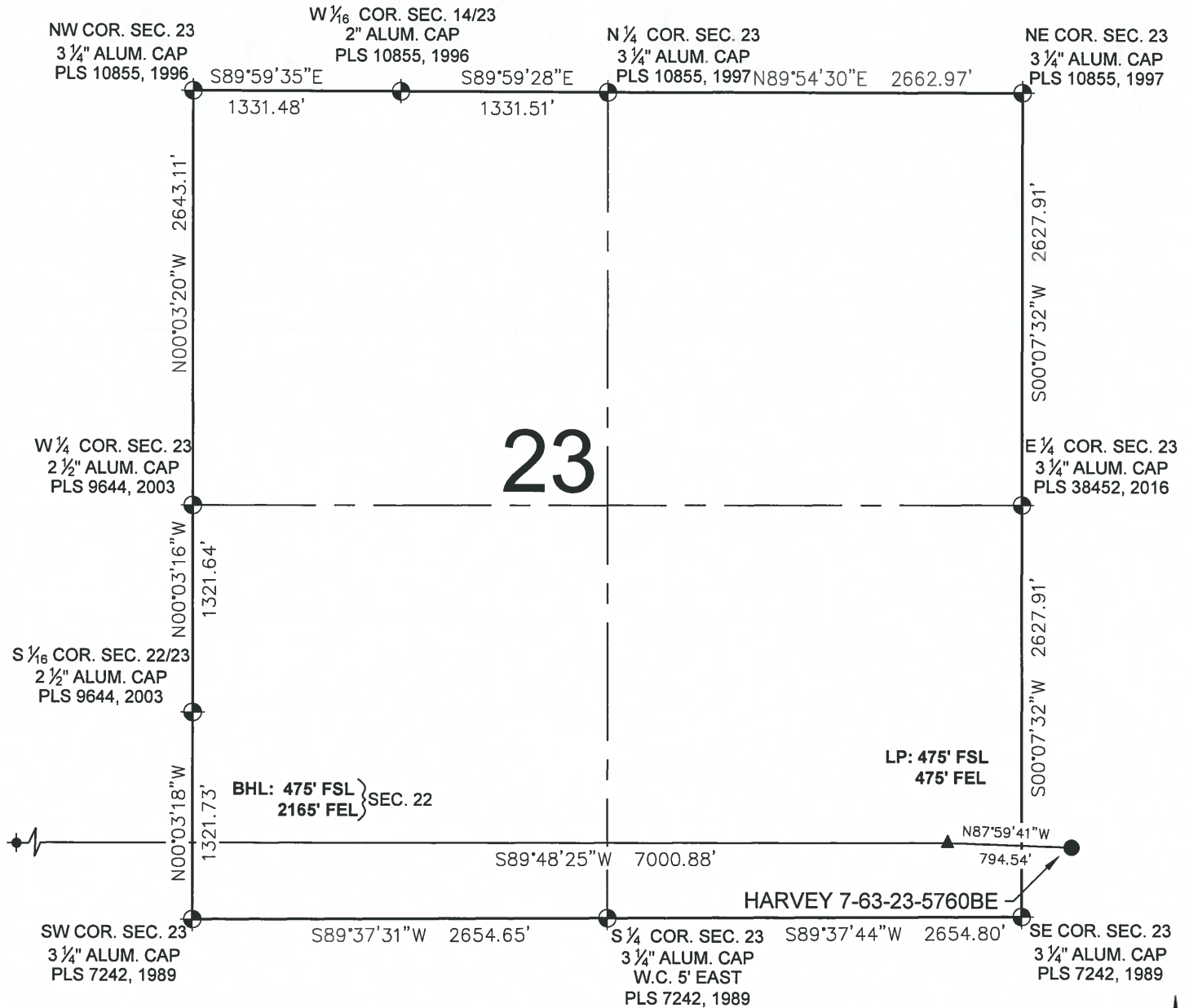


SHEET 1 OF 3

HARVEY 7-63-23-5760BE WELL LOCATION CERTIFICATE



LEGEND

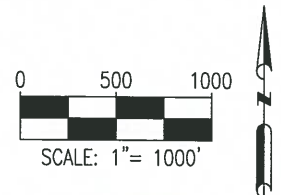
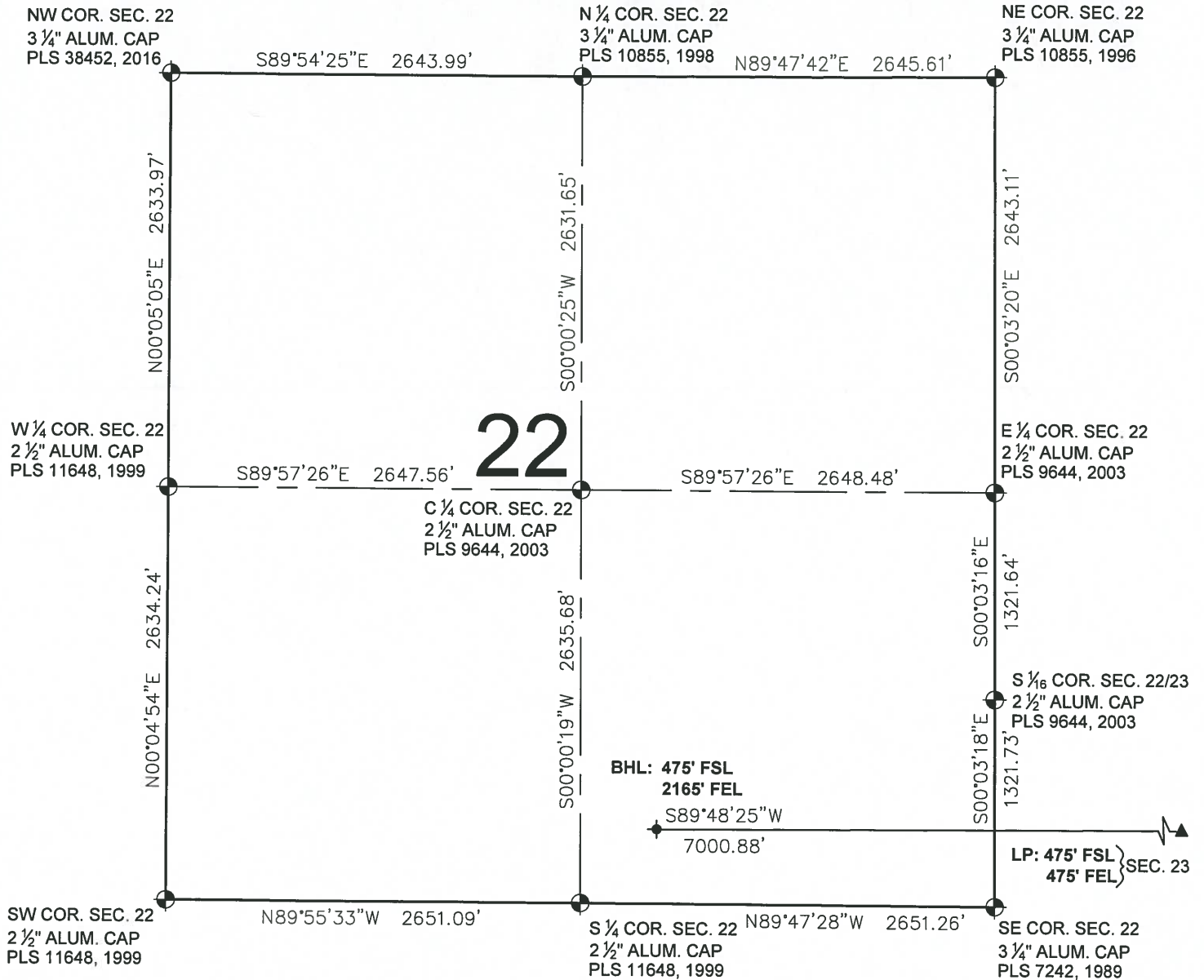
- ⊕ = EXISTING MONUMENT ♦ = BOTTOM HOLE
- = CALCULATED POSITION ▲ = LANDING POINT
- = PROPOSED WELL LP = LANDING POINT
- ◆ = EXISTING WELL BHL = BOTTOM HOLE LOCATION

BRIAN C. RITZ, PLS 38452
COLORADO LICENSED PROFESSIONAL LAND SURVEYOR
FOR AND ON BEHALF OF P.F.S., LLC

SHEET 2 OF 3

PREPARED BY: 	FIELD DATE: 10-07-16	WELL NAME: HARVEY 7-63-23-5760BE	PREPARED FOR: 	
	DRAWING DATE: 10-17-16	SURFACE LOCATION: SW 1/4 SW 1/4 SEC. 24, T7N, R63W, 6TH P.M. WELD COUNTY, COLORADO		
	BY: IJM	CHECKED BY: KAD		

HARVEY 7-63-23-5760BE WELL LOCATION CERTIFICATE





LEGEND

- ⊙ = EXISTING MONUMENT
- = CALCULATED POSITION
- = PROPOSED WELL
- ◆ = EXISTING WELL
- ⬮ = BOTTOM HOLE
- ▲ = LANDING POINT
- LP = LANDING POINT
- BHL = BOTTOM HOLE LOCATION

BRIAN C. RITZ, PLS 38452
COLORADO LICENSED PROFESSIONAL LAND SURVEYOR
FOR AND ON BEHALF OF P.F.S., LLC



SHEET 3 OF 3

PREPARED BY:  Petroleum Field Services, LLC 7535 Hilltop Circle Denver, CO 80221	FIELD DATE: 10-07-16 DRAWING DATE: 10-17-16 BY: IJM CHECKED BY: KAD	WELL NAME: HARVEY 7-63-23-5760BE SURFACE LOCATION: SW 1/4 SW 1/4 SEC. 24, T7N, R63W, 6TH P.M. WELD COUNTY, COLORADO	PREPARED FOR:  Crescent Point ENERGY CORP
---	--	---	--