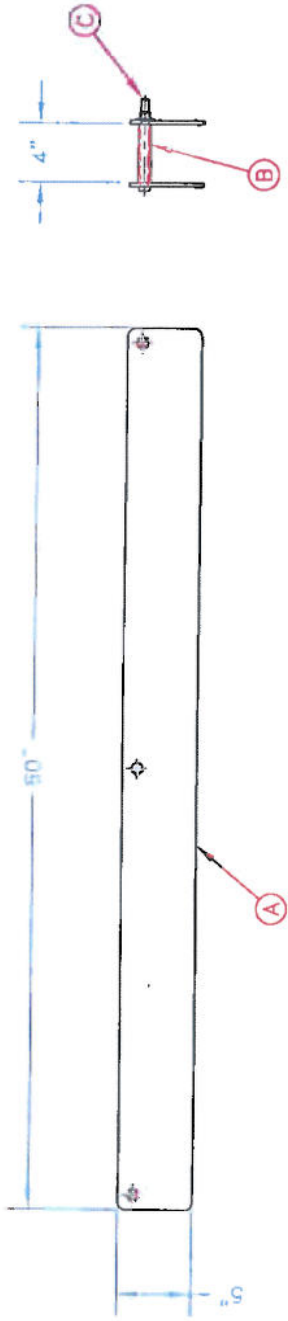


NO	DESCRIPTION	PART NO	QTY	WT
A	PL 1/4" x 5" x 80" BURNCUT		2	
B	PIPE 1/2" SCH40 x 4" LG.		3	
C	BOLT 1/2" x 4" LG. CW F.W. & LOCKNUT		3	



2-16-2013

Pinnacle MFG
 512 Vogel Henderson Ave
 Flow, Arizona 85037
 Telephone 254 840 8001

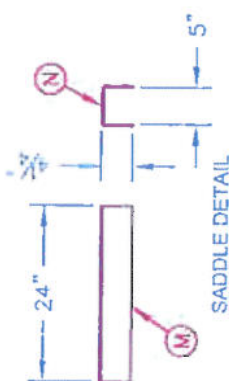
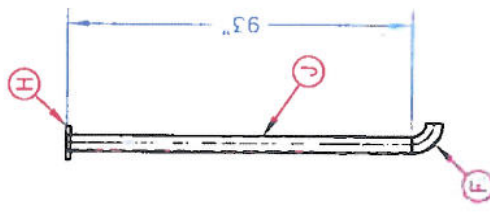
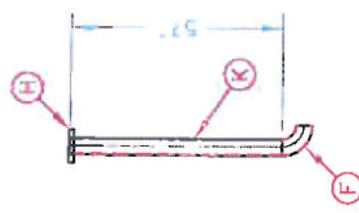
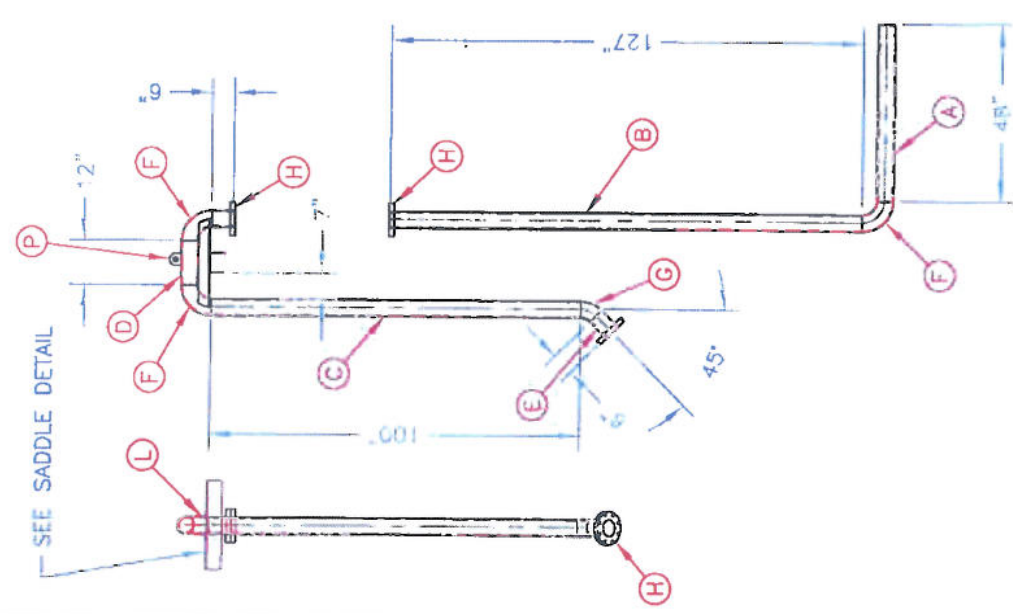
Linear Clamp Detail
 Pool Tank

DATE: 2-16-13
 DRAWN BY: [Signature]
 CHECKED BY: [Signature]

Pinnacle tanks
 Certified & Stamped
 Drawings
 H0,000001
 15054 Dia.

NO	DESCRIPTION	PART NO	QTY	WT
A	PIPE 4" SCH10 x 48" LG.		2	
B	PIPE 4" SCH10 x 127" LG.		2	
C	PIPE 4" SCH10 x 100" LG.		4	
D	PIPE 4" SCH10 x 12" LG.		4	
E	PIPE 4" SCH10 x 6" LG.		4	
F	ELBOW 90° LR. 4" SCH10		12	
G	ELBOW 45° LR. 4" SCH10		4	
H	FLANGE SUP-ON 150#		12	
J	PIPE 4" SCH10 x 93" LG.		1	
K	PIPE 4" SCH10 x 57" LG.		1	
L	L 3" x 2" x 1/4" x 24" LG.		8	
M	PL 1/4" x 4" x 24"		8	
N	PL 1/4" x 5" x 24"		4	
P	PL 1/2" x 3 1/8" x 3 1/4"		4	

MATERIAL REQ'D FOR (4) UNITS



NOTE: PICK UP / DISCHARGE TUBE CAN BE MADE TO CUSTOM LENGTHS.

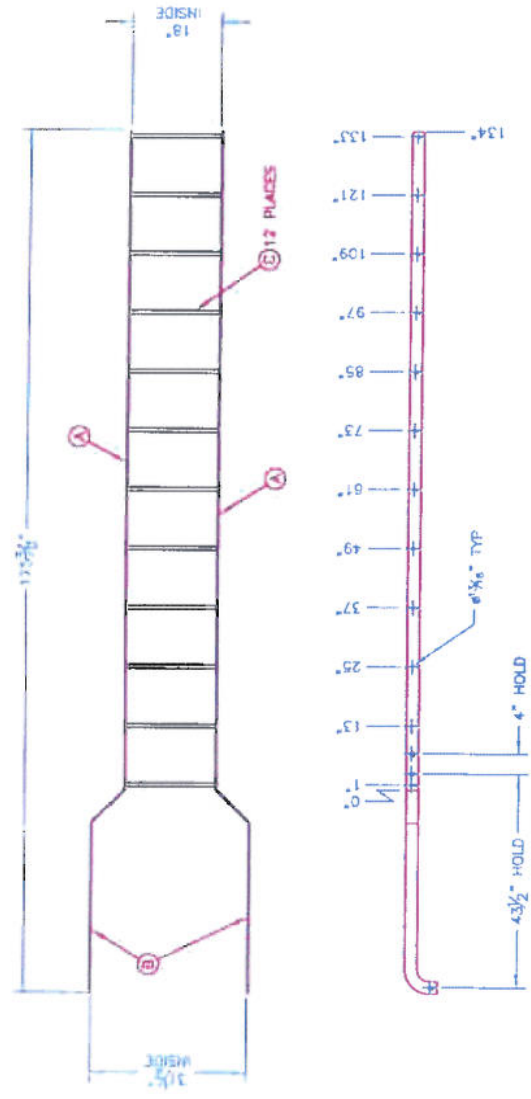
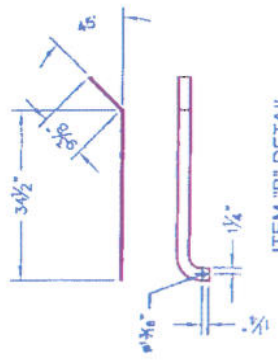
PINNACLE MFG
 655 West Henderson Ave
 Box 1000
 Telephone 256-840-8031

Cane Line Detail
 Pool Tank PT-10

REV	CHANGE	DATE	BY	CHK	APP

REVISION

REV	DESCRIPTION	DATE	BY
A	F.B. 2 1/2" x 3/8" x 13' 0"		
B	P.L. 3/8" x 2 1/2" x 43 7/8" (SEE DETAIL)		
C	R.B. 3/8" x 1 1/2" x 13'		

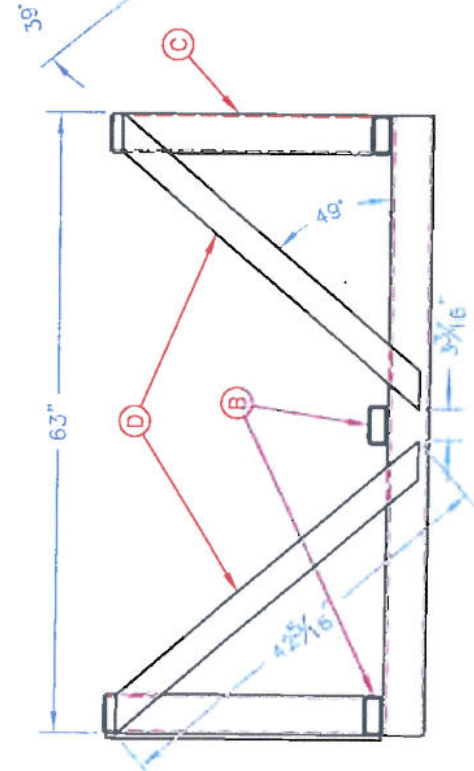
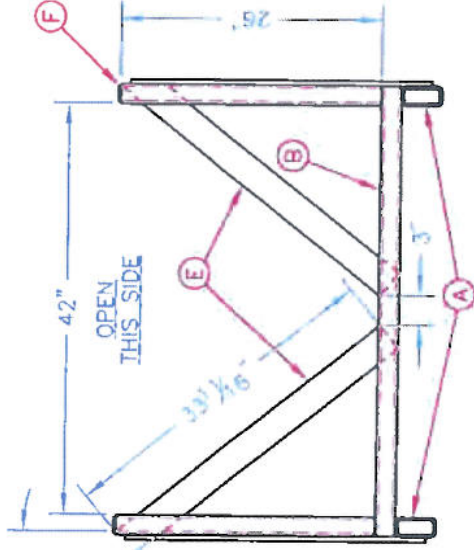
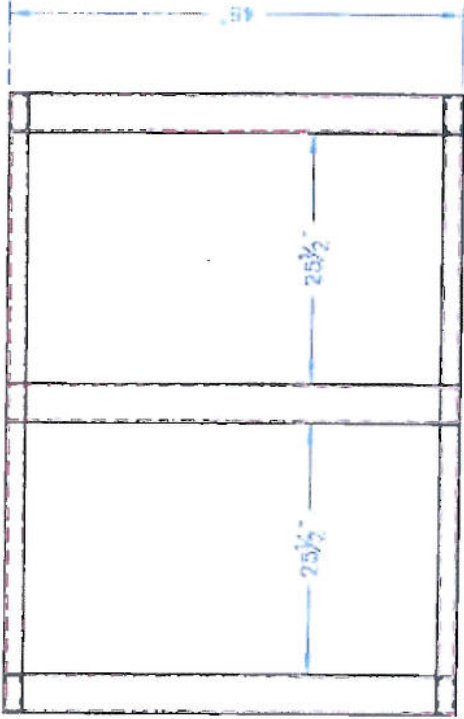


PINNACLE MEP
 5-2 West Independence Ave
 Birmingham, AL 35202
 Telephone 205-861-8031

Ladder Detail
 Pool Tank PT-10

REV	DATE	BY	CHANGE	REVISION

NO	DESCRIPTION	PART NO	QTY	WT
A	TUBING 4" x 2" x 1/4" x 63" LG.		2	
B	TUBING 4" x 2" x 1/4" x 48" LG.		3	
C	TUBING 4" x 2" x 1/4" x 20" LG.		4	
D	F.B. 3" x 1/2" x 42 5/16" LG.		4	
E	F.B. 3" x 1/2" x 33 11/16" LG.		2	
F	1/4" PL CAP		4	



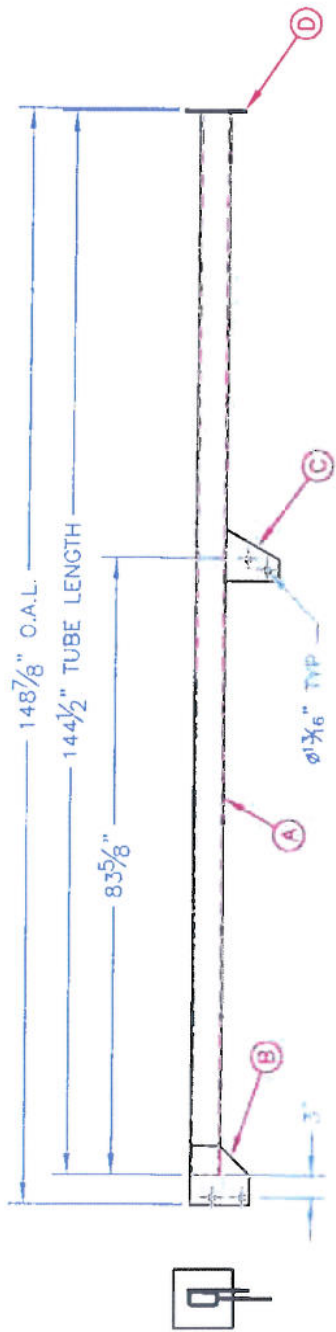
2-16-2013

PINNACLE MFG
 817 West Montgomery Ave
 Ross, Alabama 35067
 Telephone 205 840-2031

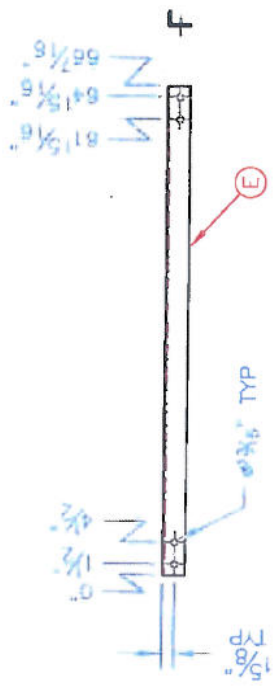
Liner Clamp Detail
 PT-10 Pool Tank

DATE	11-14-10	REV	B
BY		APP	
CHKD		DATE	

NO	DESCRIPTION	BURN FILES	QTY	WT
A	TUBE 4" x 2" x 1/4" WALL x 144 1/2" LG		1	
B	PL 1/4" x 6" x 6" BURNOUT	POOL TANK PLATFORM PARTS	1	
C	PL 1/4" x 7" x 7" BURNOUT	POOL TANK PLATFORM PARTS	1	
D	PL 3/8" x 6" x 6"		1	
E	L 3" x 2" x 1/4" x 88 7/16" LG.		1	



COLUMN DETAIL



KICK BRACE DETAIL



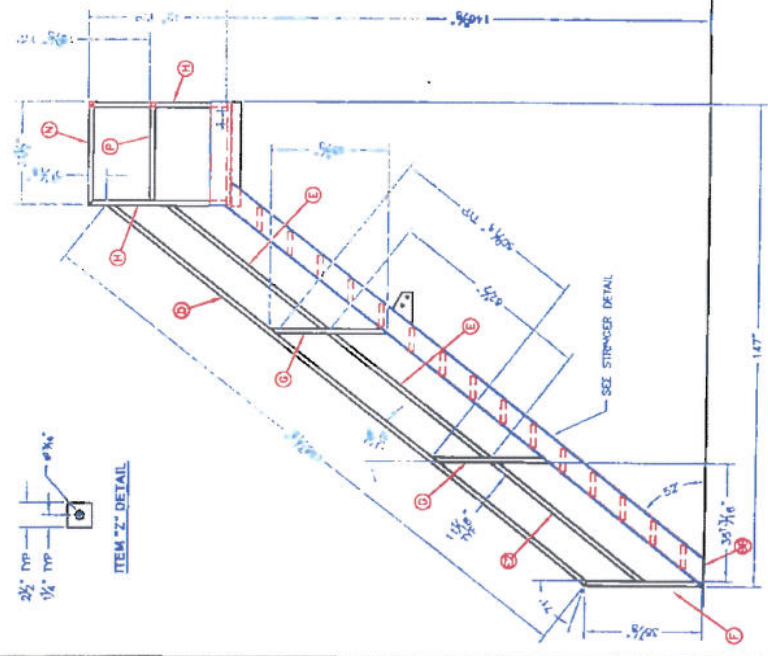
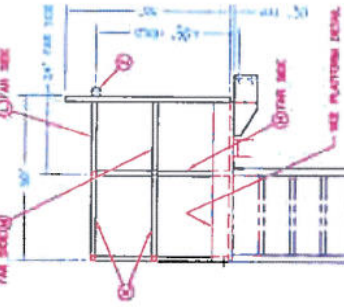
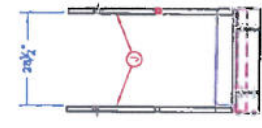
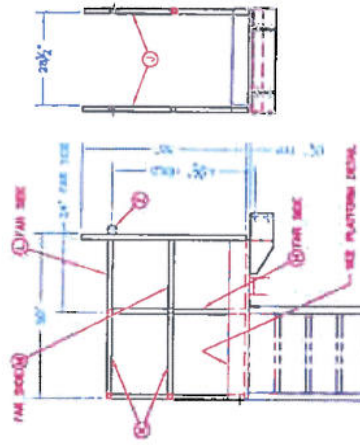
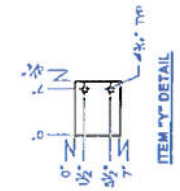
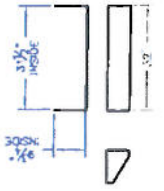
2-16-2013

PINNACLE MFG
 512 West Henderson Ave
 Box 400000
 Birmingham, AL 35207
 Telephone 205 840-8201

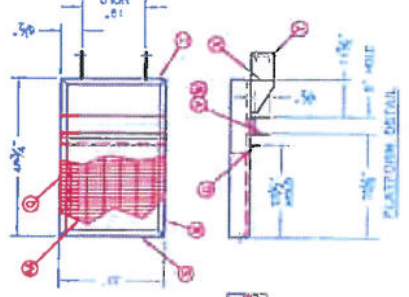
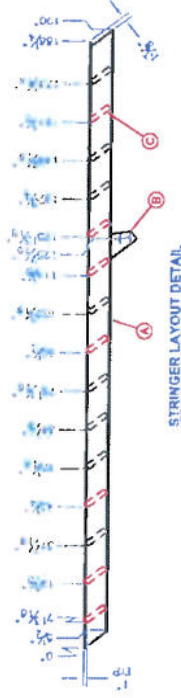
Platform Support Column Detail
 Pool Tank PT-10

DATE: 2-16-13
 DRAWN BY: B
 CHECKED BY: B

NO.	DESCRIPTION	QUANTITY	UNIT	NOTES
U	1 1/2" x 2" x 1/4" BURNOUT	1		
V	PL. 1/4" x 8" x 3/8"	1		
W	PL. 1/4" x 5 7/8" x 3/8"	2		
X	PL. 1/4" x 7" x 3/8" BURNOUT (SEE DETAIL)	1		
Y	PL. 3/8" x 7" x 1/4" BURNOUT (SEE DETAIL)	2		
Z	PL. 3/8" x 3 1/2" BURNOUT (SEE DETAIL)	2		
AA	GRATING 31" x 47 3/4"	1		
BB	PL. 1/4" x 8" x 3/8" 1/2"	1		



NO.	DESCRIPTION	QUANTITY	UNIT	NOTES
A	CP. x 8.88 x 187' L3	2		
B	PL. 1/4" x 7 3/4" x 7 3/4" BURNOUT	2		
C	COMP. BRIDGE 7" WIDE x 24"	10		
D	TUBE 1 1/2" OD x 1 1/4" x 188 7/16" L3	2		
E	TUBE 1 1/2" OD x 1 1/4" x 68 1/2" L3	4		
F	TUBE 1 1/2" OD x 1 1/4" x 38 1/2" L3	2		
G	TUBE 1 1/2" OD x 1 1/4" x 28 1/2" L3	2		
H	TUBE 1 1/2" OD x 1 1/4" x 27" L3	3		
I	TUBE 1 1/2" OD x 1 1/4" x 27" L3	2		
J	TUBE 1 1/2" OD x 1 1/4" x 27" L3	2		
K	TUBE 1 1/2" OD x 1 1/4" x 27" L3	1		
L	TUBE 1 1/2" OD x 1 1/4" x 27" L3	1		
M	TUBE 1 1/2" OD x 1 1/4" x 27" L3	1		
N	TUBE 1 1/2" OD x 1 1/4" x 27" L3	1		
O	PL. 1/4" x 7 3/4" x 48 1/4" BURNOUT	1		
P	PL. 1/4" x 7 3/4" x 48 1/4" BURNOUT	1		
Q	PL. 1/4" x 7 3/4" x 31 1/2" BURNOUT	1		
R	PL. 1/4" x 7 3/4" x 31 1/2" BURNOUT	1		
S	PL. 1/4" x 7 3/4" x 31 1/2" BURNOUT	1		
T	PL. 1/4" x 7 3/4" x 31 1/2" BURNOUT	1		



2-16-2013

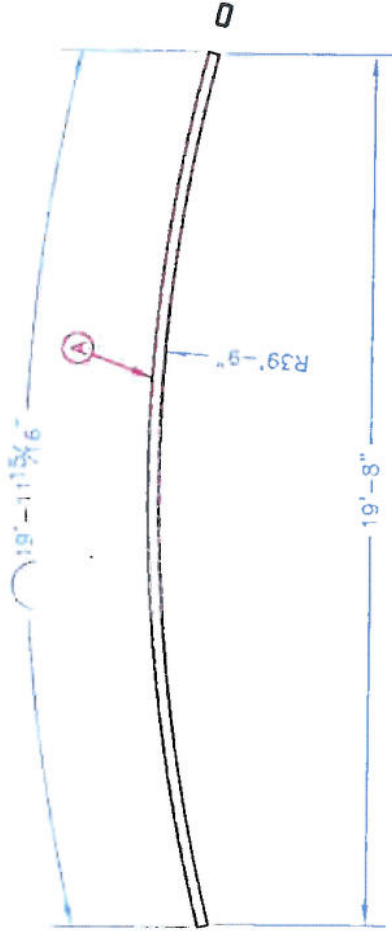
PINNACLE MFG
 512 Wood Hardman Ave
 Bessemer, Alabama 35897
 Telephone 205 940-0071

Stair & Platform Detail
Pool Tank PT-10

NO.	DESCRIPTION	DATE	BY	CHKD.	REVISED
1	ISSUED FOR CONSTRUCTION	02/16/13

NO	DESCRIPTION	PART NO	QTY	WT
A	TUBE 8" x 3" x 1/4" WALL		3	

MATERIAL REQ'D FOR (1) PANEL



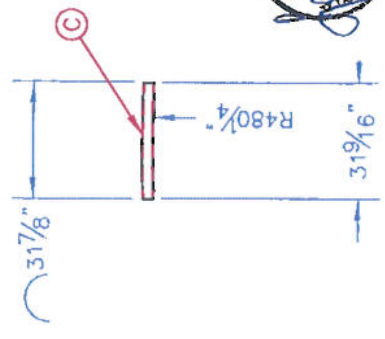
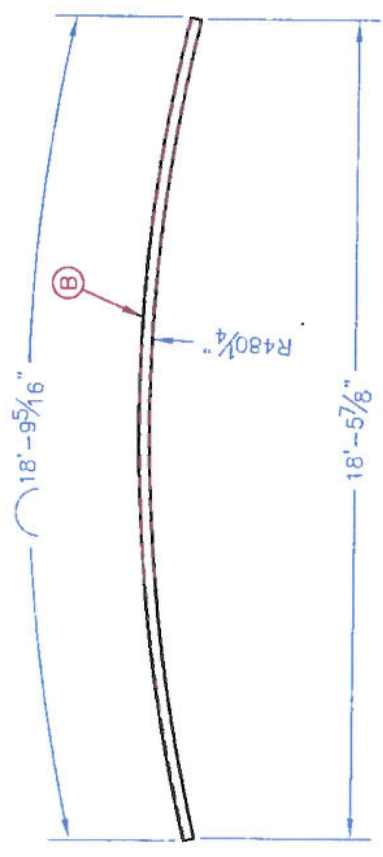
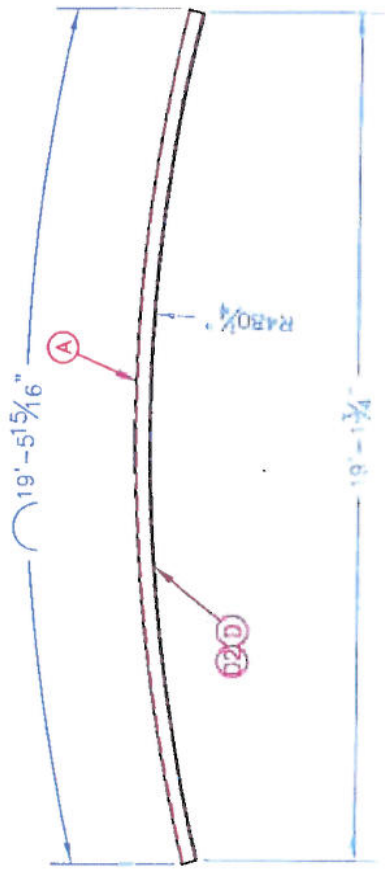
PINNACLE MFG
 812 West Henderson Ave
 Birmingham, AL 35209
 Telephone: 205-840-2023

Rolled Jig Tube Detail
 PT-10 Tank Panel

REV	DATE	BY	CHK	APP	REVISION
1					
2					
3					
4					
5					
6					
7					
8					
9					
10					

NO	DESCRIPTION	QUANTITY	WT
A	TUBE 4" SQ. X 1/4" WALL	2	
B	TUBE 3" SQ. X 1/4" WALL	4	
C	TUBE 3" SQ. X 1/4" WALL	11	
D	PL. 1/4" X 72" X 231 1/2"		
DZ	PL. 1/4" X 70" X 231 1/2"		

MATERIAL REQ'D FOR (1) PANEL

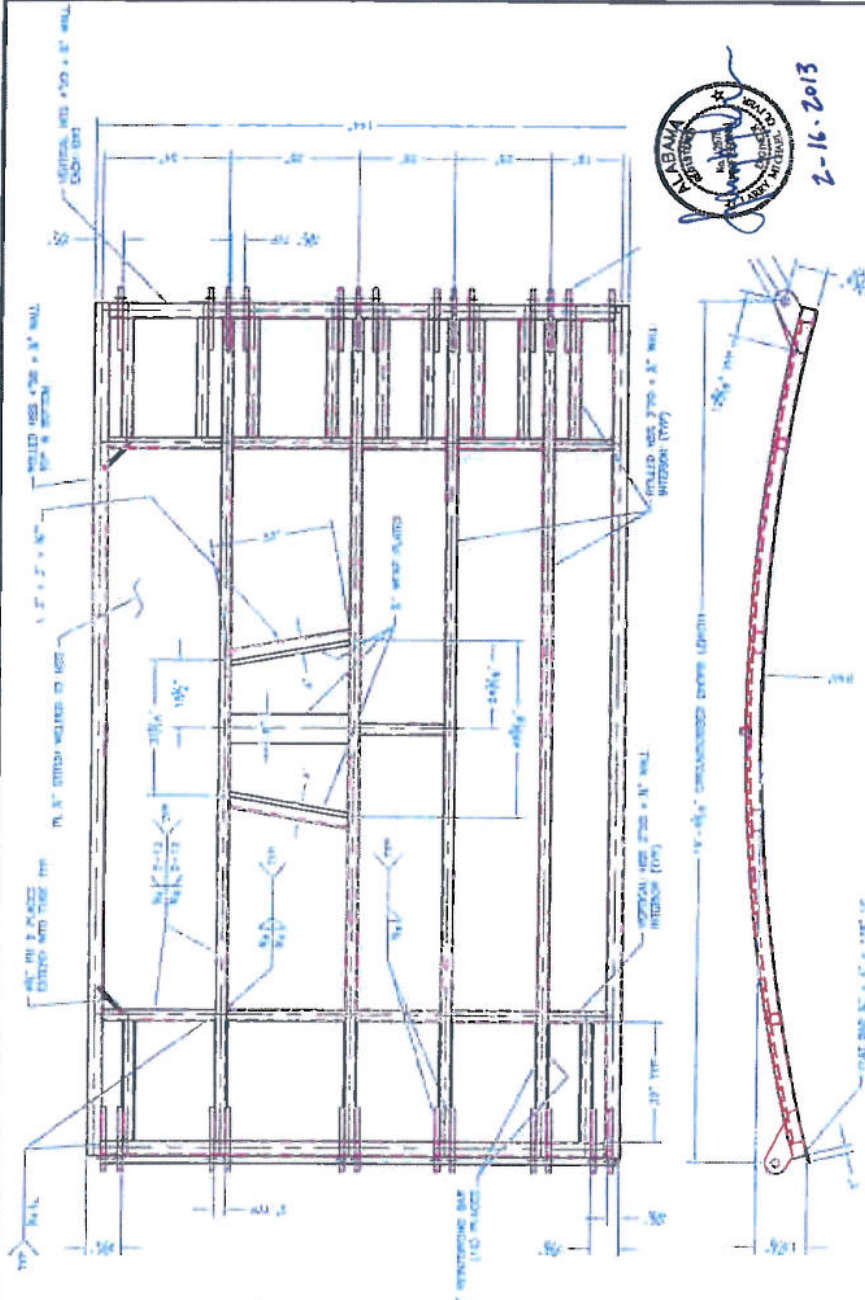


2-16-2013

PINNACLE MFG
 812 West Henderson Ave
 Boaz, Alabama 36007
 Telephone 205 342-0031

Roller Tube Detail
PT-10 Tank Panel

REV	DATE	BY	CHK	REVISION
1	11-08-13	DM	DM	REVISED TO B



PINNACLE MFG
 813 West Henderson Ave
 Dox, Alabama 36007
 Telephone 205 840-3031

**Mobile Water Tank PT-10
 Panel Detail**

BURN FILES:
 PT-10 PANEL TOP PLATE
 PT-10 PANEL BOTTOM PLATE
 PT-10 PANEL REINFORCING BARS

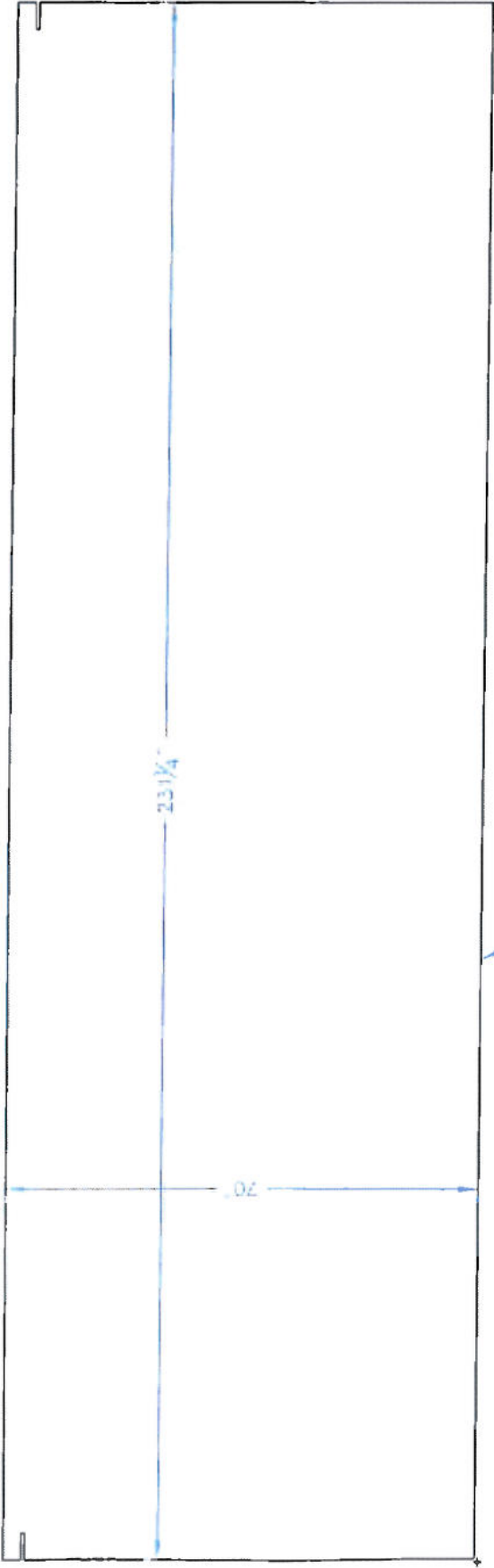
DATE: 2-16-2013

GENERAL NOTES:

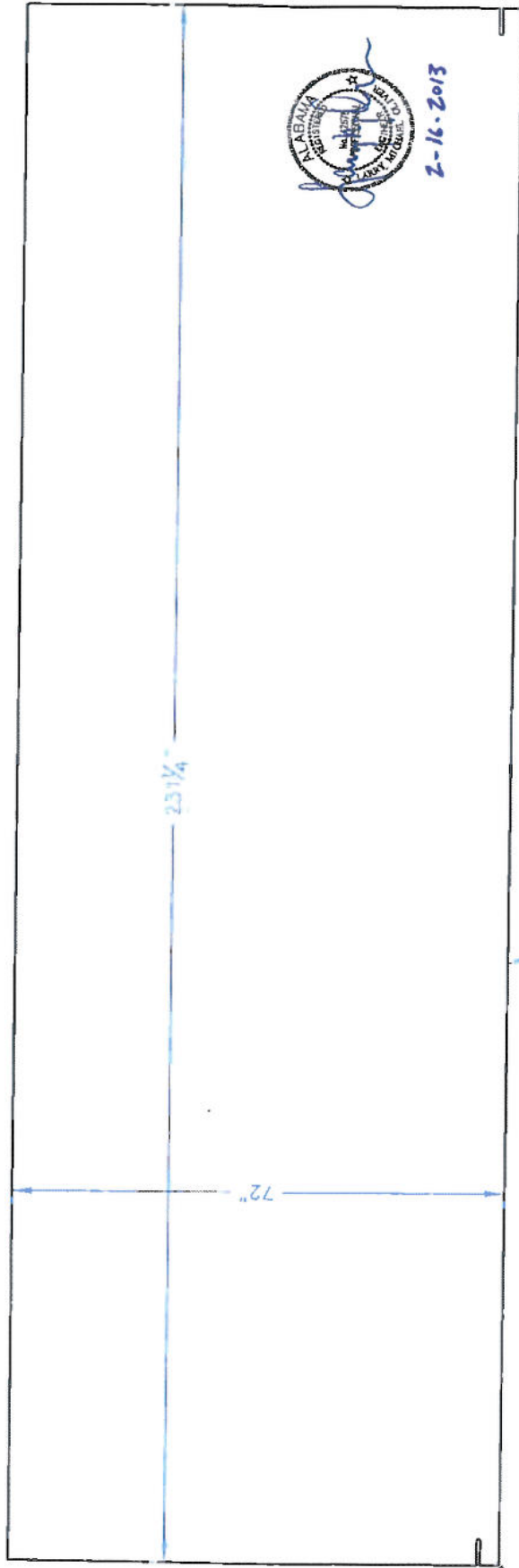
1. The fabricator shall fabricate and assemble the tank to meet the requirements of the contract and the applicable code.
2. The fabricator shall be responsible for obtaining all necessary permits and approvals.
3. The fabricator shall be responsible for obtaining all necessary materials and labor.
4. The fabricator shall be responsible for obtaining all necessary drawings and specifications.
5. The fabricator shall be responsible for obtaining all necessary approvals and permits.
6. The fabricator shall be responsible for obtaining all necessary materials and labor.
7. The fabricator shall be responsible for obtaining all necessary drawings and specifications.
8. The fabricator shall be responsible for obtaining all necessary approvals and permits.
9. The fabricator shall be responsible for obtaining all necessary materials and labor.
10. The fabricator shall be responsible for obtaining all necessary drawings and specifications.
11. The fabricator shall be responsible for obtaining all necessary approvals and permits.
12. The fabricator shall be responsible for obtaining all necessary materials and labor.
13. The fabricator shall be responsible for obtaining all necessary drawings and specifications.
14. The fabricator shall be responsible for obtaining all necessary approvals and permits.
15. The fabricator shall be responsible for obtaining all necessary materials and labor.
16. The fabricator shall be responsible for obtaining all necessary drawings and specifications.
17. The fabricator shall be responsible for obtaining all necessary approvals and permits.
18. The fabricator shall be responsible for obtaining all necessary materials and labor.
19. The fabricator shall be responsible for obtaining all necessary drawings and specifications.
20. The fabricator shall be responsible for obtaining all necessary approvals and permits.

GENERAL NOTES (continued):

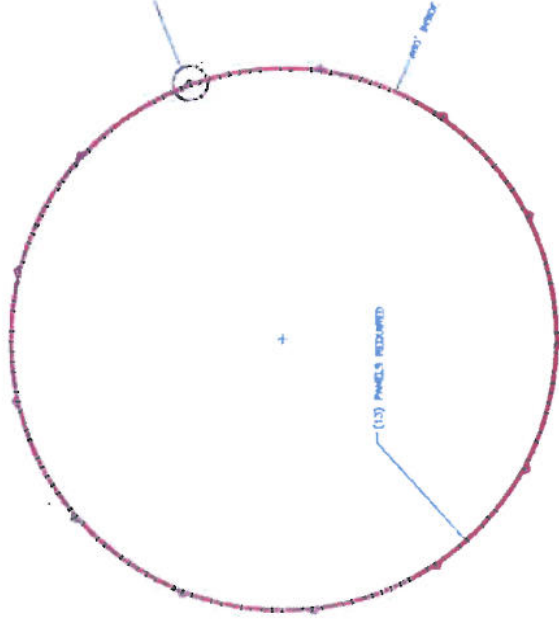
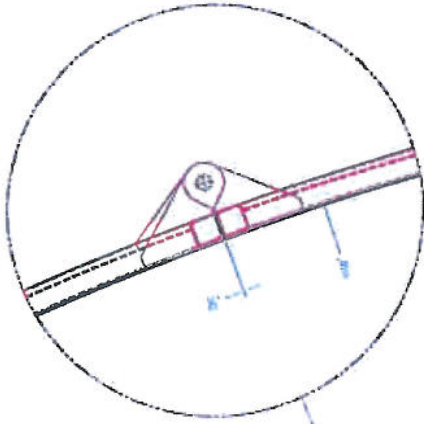
21. The fabricator shall be responsible for obtaining all necessary materials and labor.
22. The fabricator shall be responsible for obtaining all necessary drawings and specifications.
23. The fabricator shall be responsible for obtaining all necessary approvals and permits.
24. The fabricator shall be responsible for obtaining all necessary materials and labor.
25. The fabricator shall be responsible for obtaining all necessary drawings and specifications.
26. The fabricator shall be responsible for obtaining all necessary approvals and permits.
27. The fabricator shall be responsible for obtaining all necessary materials and labor.
28. The fabricator shall be responsible for obtaining all necessary drawings and specifications.
29. The fabricator shall be responsible for obtaining all necessary approvals and permits.
30. The fabricator shall be responsible for obtaining all necessary materials and labor.
31. The fabricator shall be responsible for obtaining all necessary drawings and specifications.
32. The fabricator shall be responsible for obtaining all necessary approvals and permits.
33. The fabricator shall be responsible for obtaining all necessary materials and labor.
34. The fabricator shall be responsible for obtaining all necessary drawings and specifications.
35. The fabricator shall be responsible for obtaining all necessary approvals and permits.
36. The fabricator shall be responsible for obtaining all necessary materials and labor.
37. The fabricator shall be responsible for obtaining all necessary drawings and specifications.
38. The fabricator shall be responsible for obtaining all necessary approvals and permits.
39. The fabricator shall be responsible for obtaining all necessary materials and labor.
40. The fabricator shall be responsible for obtaining all necessary drawings and specifications.
41. The fabricator shall be responsible for obtaining all necessary approvals and permits.
42. The fabricator shall be responsible for obtaining all necessary materials and labor.
43. The fabricator shall be responsible for obtaining all necessary drawings and specifications.
44. The fabricator shall be responsible for obtaining all necessary approvals and permits.
45. The fabricator shall be responsible for obtaining all necessary materials and labor.
46. The fabricator shall be responsible for obtaining all necessary drawings and specifications.
47. The fabricator shall be responsible for obtaining all necessary approvals and permits.
48. The fabricator shall be responsible for obtaining all necessary materials and labor.
49. The fabricator shall be responsible for obtaining all necessary drawings and specifications.
50. The fabricator shall be responsible for obtaining all necessary approvals and permits.



1/4" TOP PANEL PLATE



1/4" BOTTOM PANEL PLATE



2-16-2013

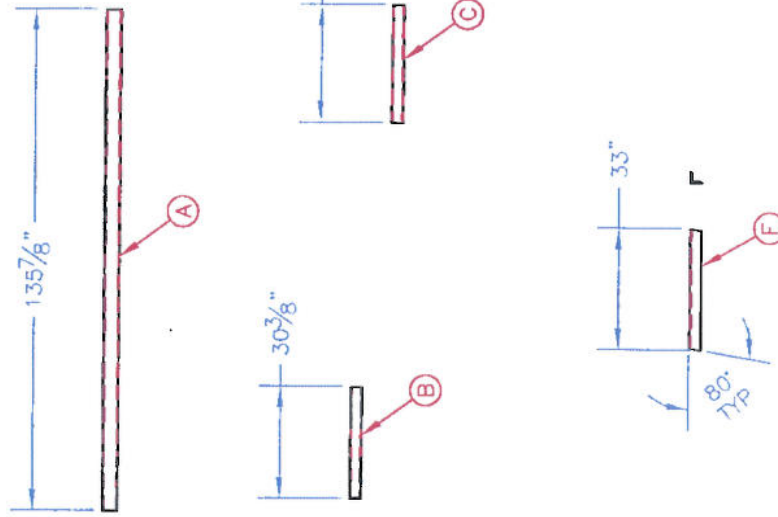
Pinnacle MFG
 115 West Hartsfield Ave
 Box 2, J. Anderson
 Telephone 258 800-8001
 FAX 258 800-8002
 115 West Hartsfield Ave
 Box 2, J. Anderson
 Telephone 258 800-8001
 FAX 258 800-8002

Mobile Water Tank 10,740 BBL
 Plan View

DATE	BY	CHKD	APP'D

NO	DESCRIPTION	PART NO	QTY	WT
A	TUBE 4" SQ. x 1/4" WALL x 135 7/8" LG.		2	
B	TUBE 3" SQ. x 1/4" WALL x 30 3/8" LG.		2	
C	TUBE 3" SQ. x 1/4" WALL x 31 7/8" LG.		2	
D	TUBE 3" SQ. x 1/4" WALL x 22 7/8" LG.		8	
E	TUBE 3" SQ. x 1/4" WALL x 15 3/8" LG.		2	
F	L 3" x 3" x 3/8" x 33" LG.		2	

MATERIAL REQ'D FOR (1) PANEL

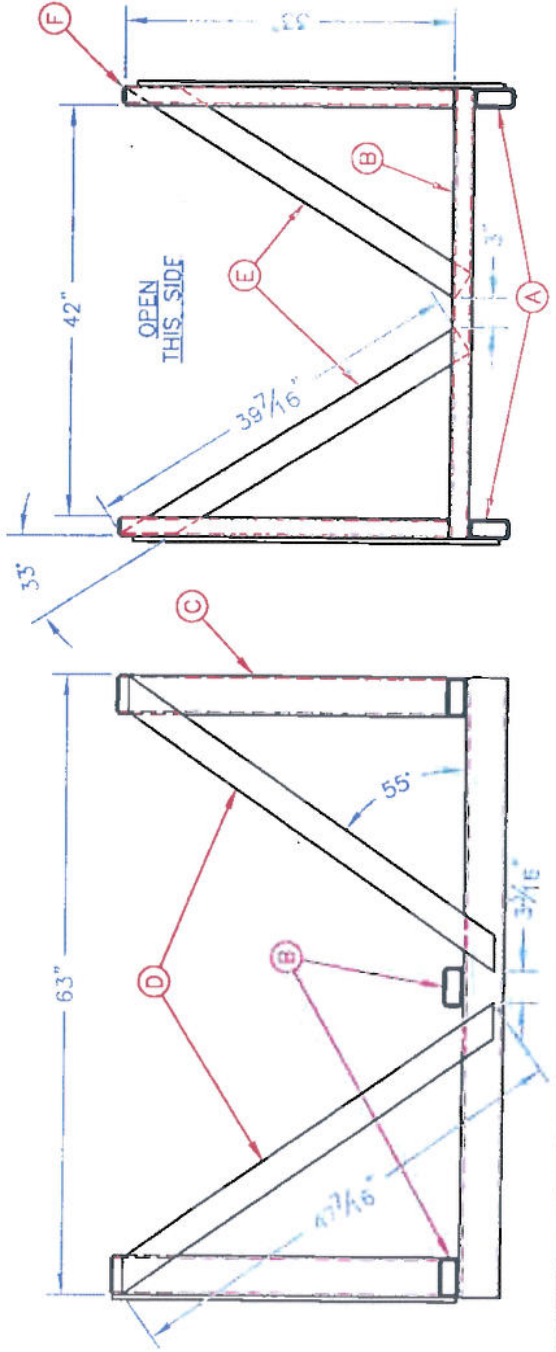
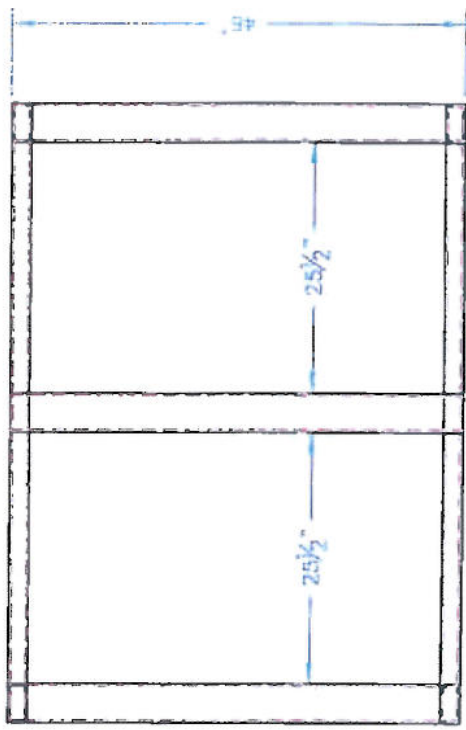


PINNACLE MFG
 615 West Henderson Ave
 Dallas, Texas 75207
 Telephone 214-840-8031

Vertical Tube Detail
 Pool Tank PT-10

DATE: 02-16-13
 SHEET NO: 8
 OF: 2

NO	DESCRIPTION	PART NO	QTY	WT
A	TUBING 4" x 2" x 1/4" x 63" LG		2	
B	TUBING 4" x 2" x 1/4" x 46" LG		3	
C	TUBING 4" x 2" x 1/4" x 33" LG		4	
D	F.B. 3" x 1/2" x 47 7/16" LG.		4	
E	F.B. 3" x 1/2" x 39 7/16" LG.		2	
F	1/4" PL CAP		4	

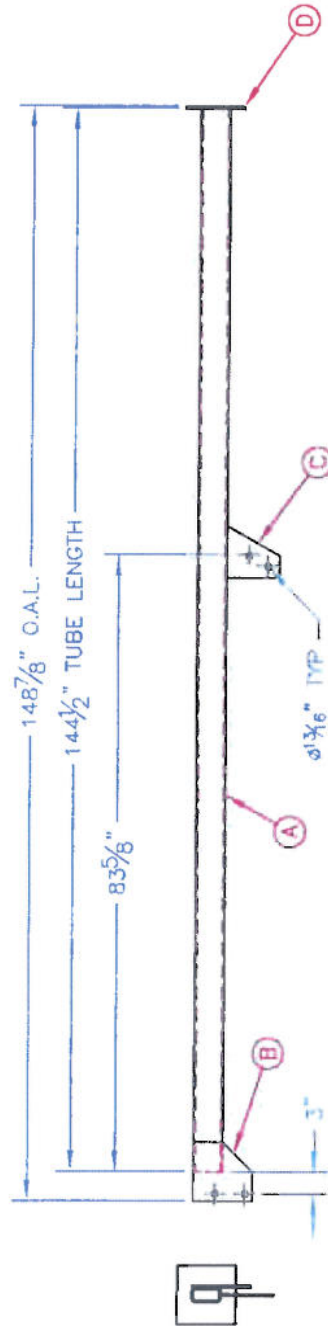


PINNACLE MFG
 513 West Henderson Ave
 Opelika, Alabama 36801
 (205) 349-1100
 Fax: (205) 349-1101
 www.pinnacle-mfg.com

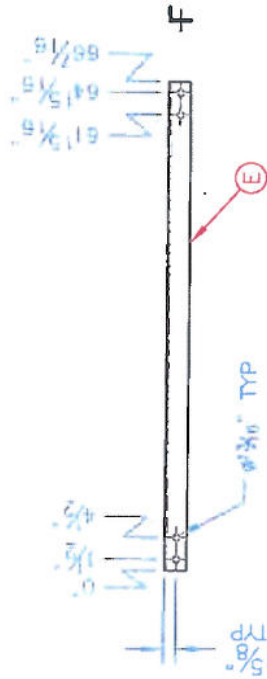
Linear Clamp Pallet Tank
 PT-24 Pallet Tank

DATE: 02/16/13
 DRAWN BY: B
 CHECKED BY: B
 SCALE: 1:1

NO	DESCRIPTION	BURN FILES	QTY	WT
A	TUBE 4" x 2" x 1/4" WALL x 144 1/2" LG.		1	
B	PL 1/4" x 8" x 8" BURNDOUT	POOL TANK PLATFORM PARTS	1	
C	PL 1/4" x 7" x 7" BURNDOUT	POOL TANK PLATFORM PARTS	1	
D	PL 3/8" x 8" x 8"		1	
E	L 3" x 2" x 1/4" x 66 7/16" LG.		1	



COLUMN DETAIL



KICK BRACE DETAIL



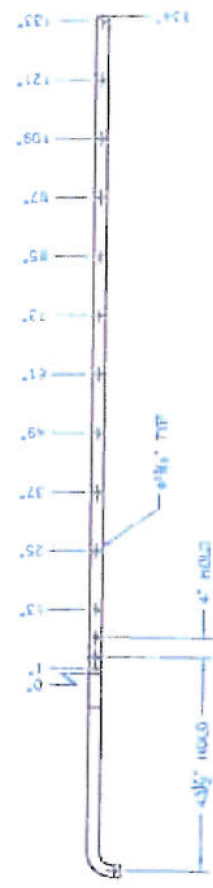
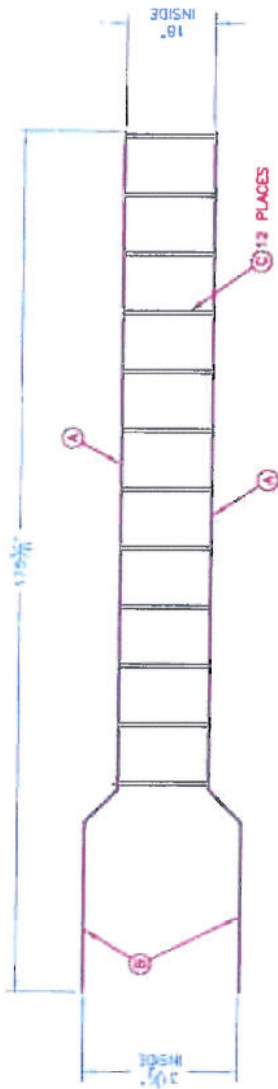
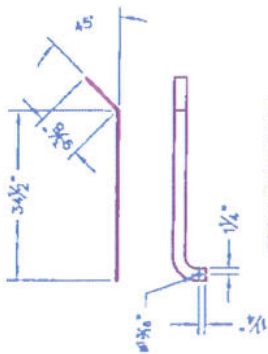
2-16-2013

Pinnacle MEP
 612 West Henderson Ave
 Suite 100
 Tampa, FL 33609
 Telephone: 813.840.8031

Platform Support Column Detail
 Pool Tank PT-24

PROJECT: _____ SHEET: _____ OF _____
 DATE: _____
 DRAWN BY: _____
 CHECKED BY: _____
 SCALE: _____

NO.	REV.	DATE	BY
A			
B			
C			



ALABAMA REGISTERED PROFESSIONAL ENGINEER
 LARRY W. HUGHES
 2-16-2013

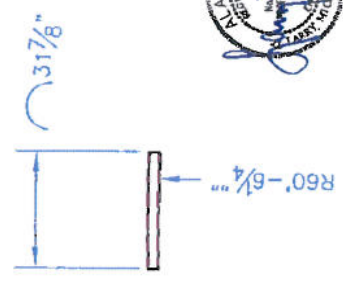
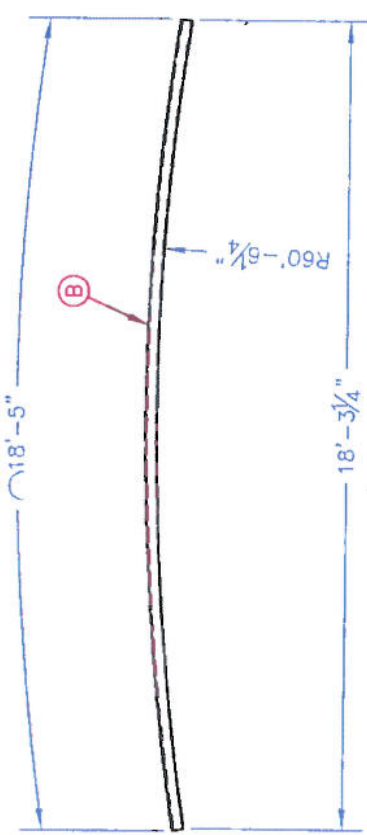
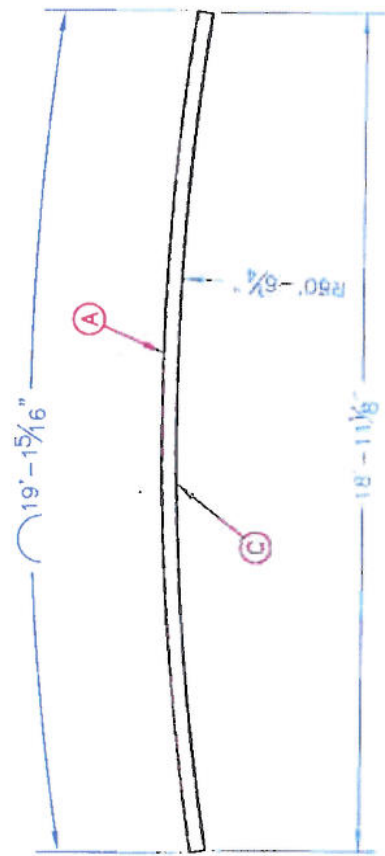
PINNACLE MFG
 817 West Independence Ave
 Pool, Alabama 36067
 Telephone: 205-690-0211
 Fax: 205-690-0212
 Email: sales@pinnacle-mfg.com
 Website: www.pinnacle-mfg.com

Ladder Detail
 Pool Tank PT-24

REV	DATE	BY	REVISION
			CHANGE
			8

NO	DESCRIPTION	PART NO	QTY	WT
A	TUBE 4" SQ. x 1/4" WALL		2	
B	TUBE 3" SQ. x 1/4" WALL		4	
C	PL 1/4" x 72" x 2Z 1/4"		2	
D	TUBE 3" SQ. x 1/4" WALL		11	

MATERIAL REQ'D FOR (1) PANEL

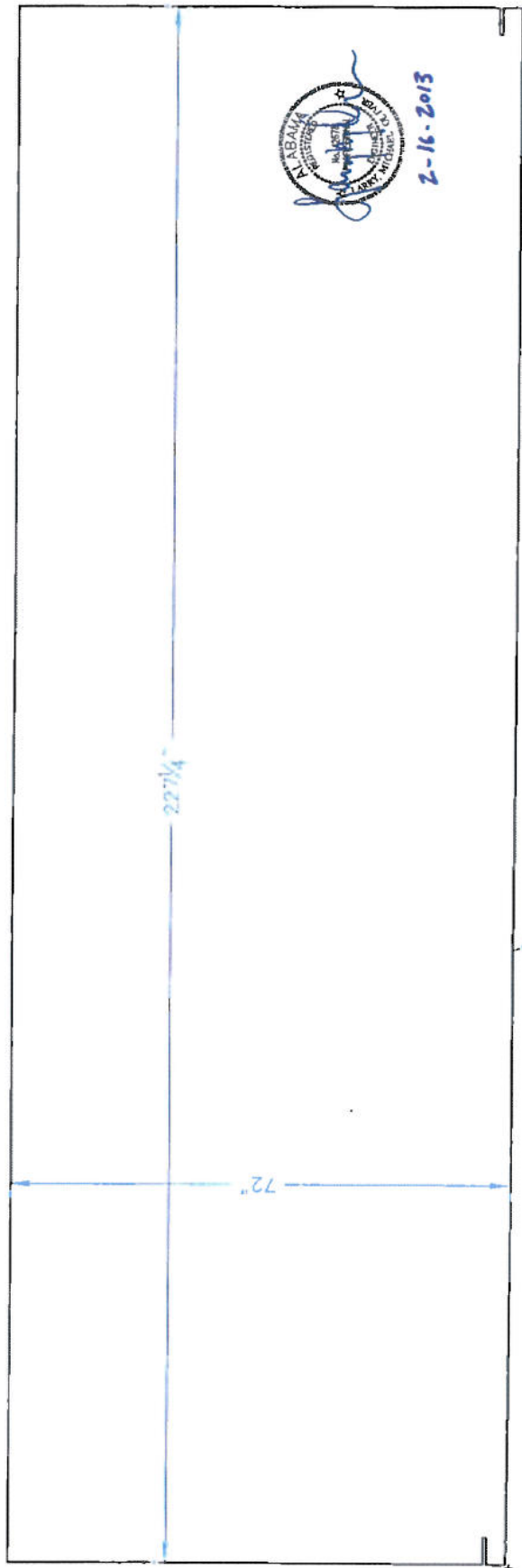
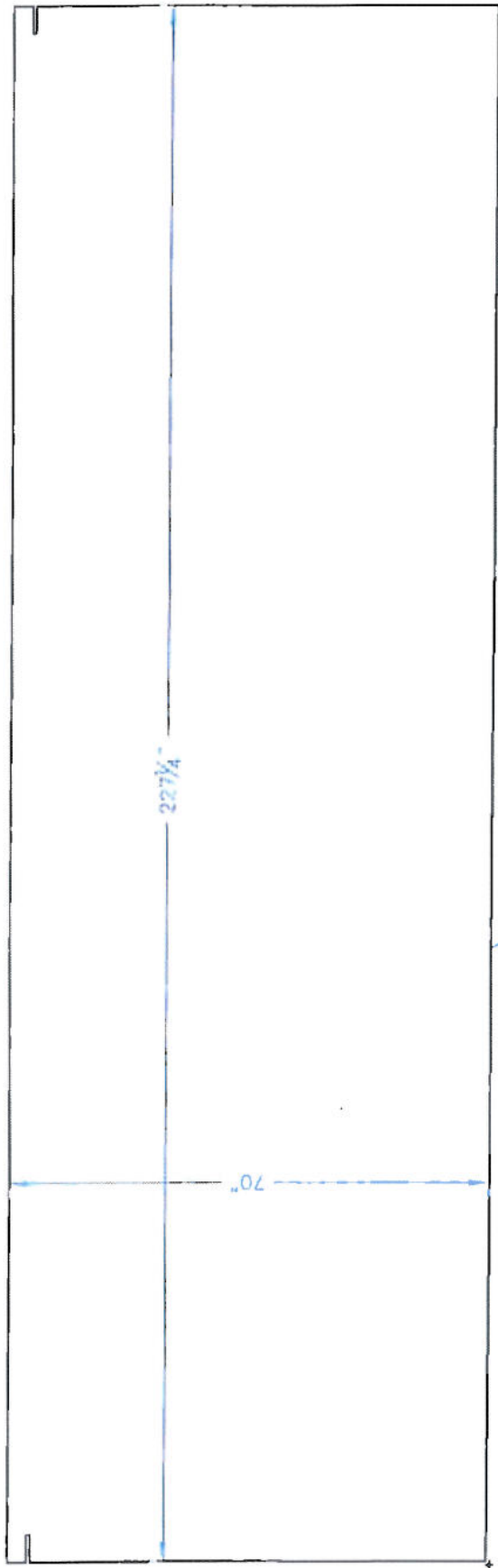


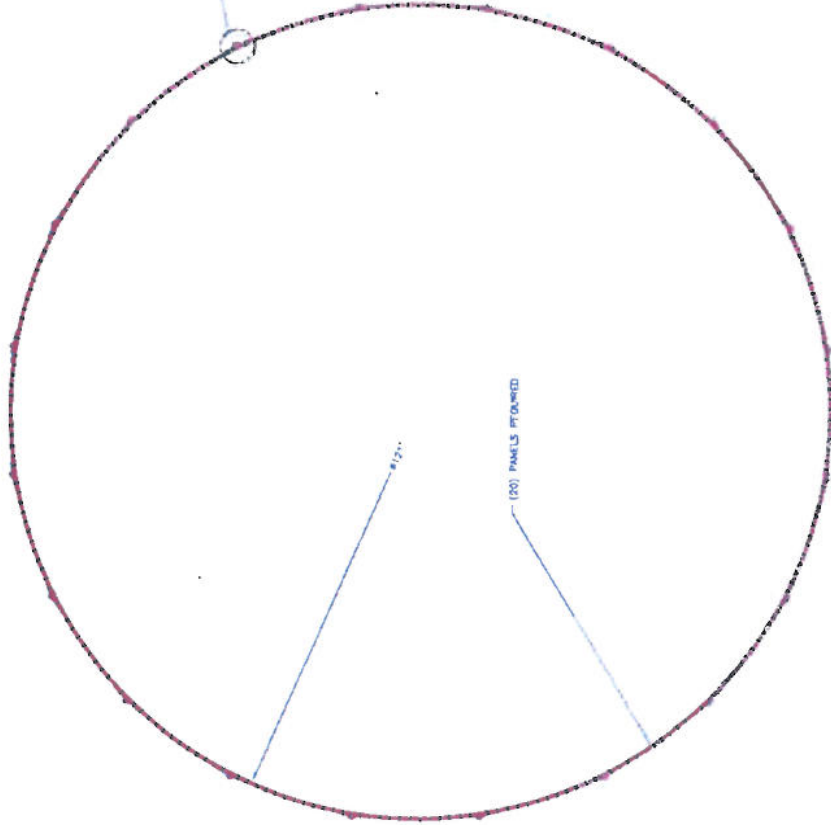
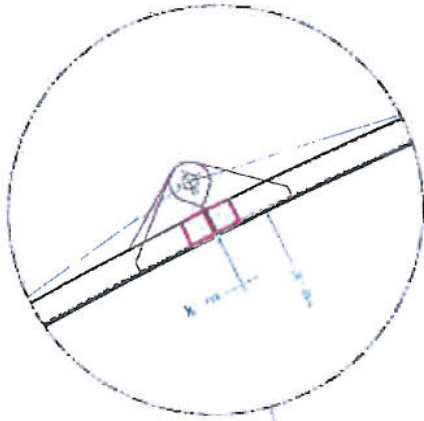
2-16-2013

PINNACLE MFG
 515 West Henderson Ave
 Boaz, Alabama 35957
 Telephone 205 840-9031

Rolled Tube Detail
 PT-24 Tank Panel

REV	DATE	BY	CHKD	APP'D	REVISION
1					





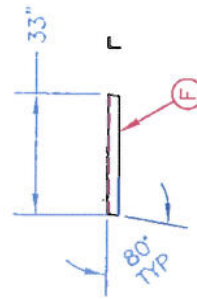
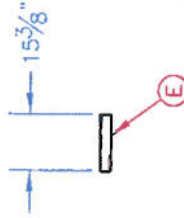
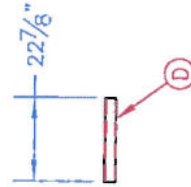
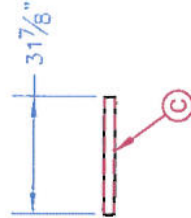
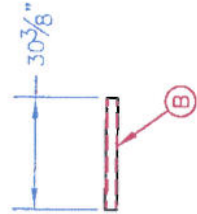
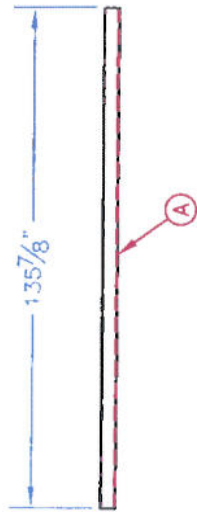
2-16-2013

Pinnacle I/F/B
 512 West Henderson Ave
 Decatur, Alabama 35607
 Telephone: 256-321-8400
 Fax: 256-321-8401
 Email: info@pinnacleifb.com
 Website: www.pinnacleifb.com
 Project: Mobba Water Tank 24, 918 BBL
 Plan View

NO.	DATE	BY	CHKD	APP'D	REV

NO	DESCRIPTION	PART NO	QTY	WT
A	TUBE 4" SQ. x 1/4" WALL x 135 7/8" LG.		2	
B	TUBE 3" SQ. x 1/4" WALL x 30 3/8" LG.		2	
C	TUBE 3" SQ. x 1/4" WALL x 31 7/8" LG.		2	
D	TUBE 3" SQ. x 1/4" WALL x 22 7/8" LG.		5	
E	TUBE 3" SQ. x 1/4" WALL x 15 3/8" LG.		2	
F	L 3" x 3" x 3/8" x 33" LG.		2	

MATERIAL REQ'D FOR (1) PANEL



2-16-2013

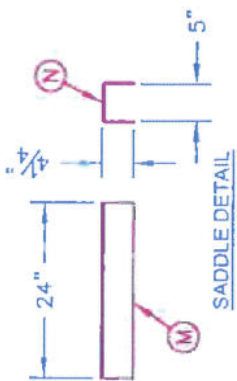
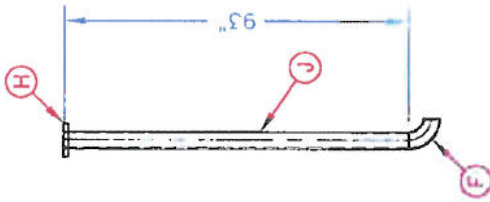
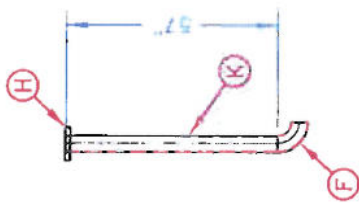
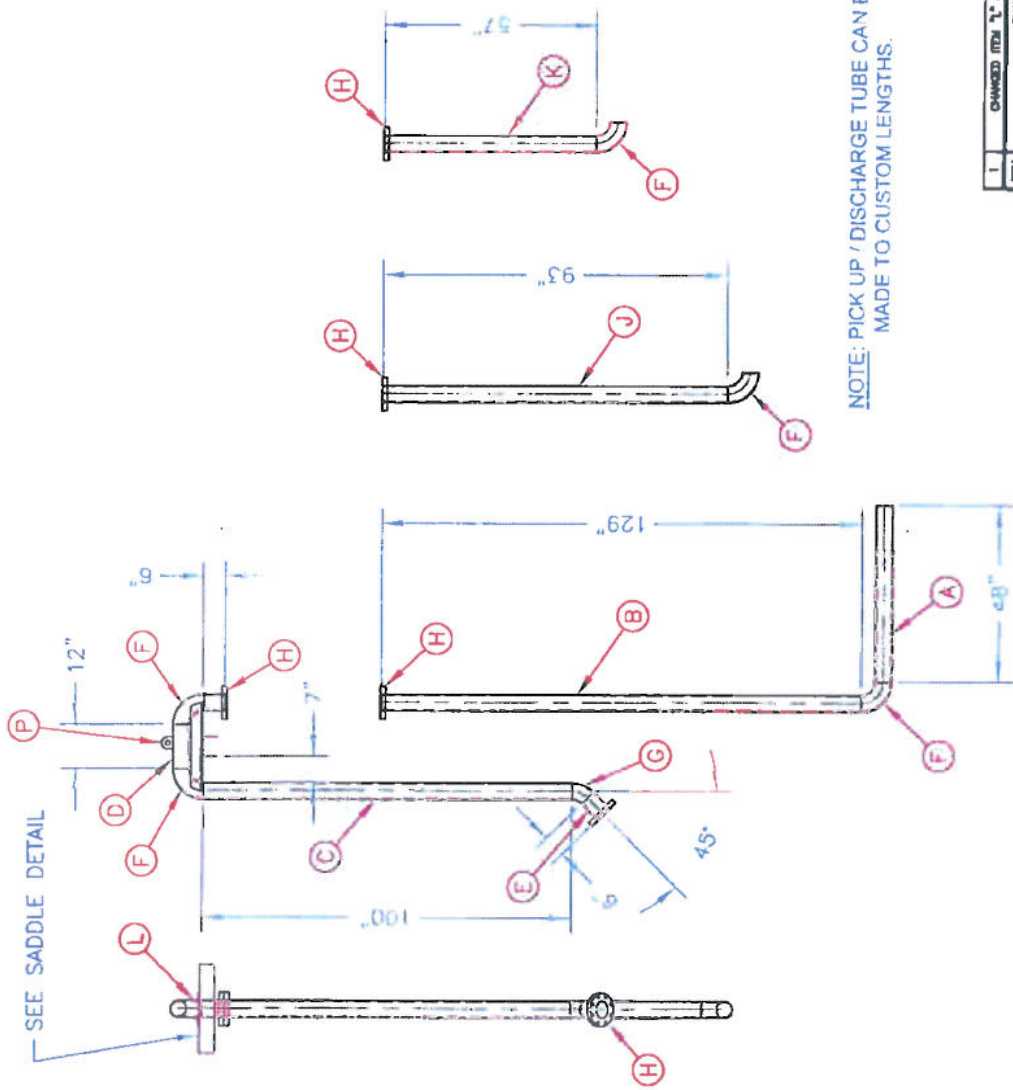
PINNACLE MFG
 512 Wood Henshaw Ave
 Tallapoosa, GA 30565
 Telephone 205 840-8031

Vertical Tube Detail
 Pool Tank PT-24

DATE: 2-16-13
 DRAWN BY: [unclear]
 CHECKED BY: [unclear]

NO	DESCRIPTION	PART NO	QTY	WT
A	PIPE 4" SCH10 x 48" LG.		2	
B	PIPE 4" SCH10 x 129" LG		2	
C	PIPE 4" SCH10 x 100" LG.		4	
D	PIPE 4" SCH10 x 12" LG.		4	
E	PIPE 4" SCH10 x 6" LG.		4	
F	ELBOW 90° L.R. 4" SCH10		12	
G	ELBOW 45° L.R. 4" SCH10		12	
H	FLANGE SLIP-ON 150#		1	
J	PIPE 4" SCH10 x 93" LG.		1	
K	PIPE 4" SCH10 x 57" LG.		1	
L	L 3" x 2" x 1/4" x 24" LG.		8	
M	PL 1/4" x 4" x 24"		8	
N	PL 1/4" x 5" x 24"		4	
P	PL 1/2" x 3 1/8" x 3 1/4"		4	

MATERIAL REQ'D FOR (4) UNIT



2-16-2013

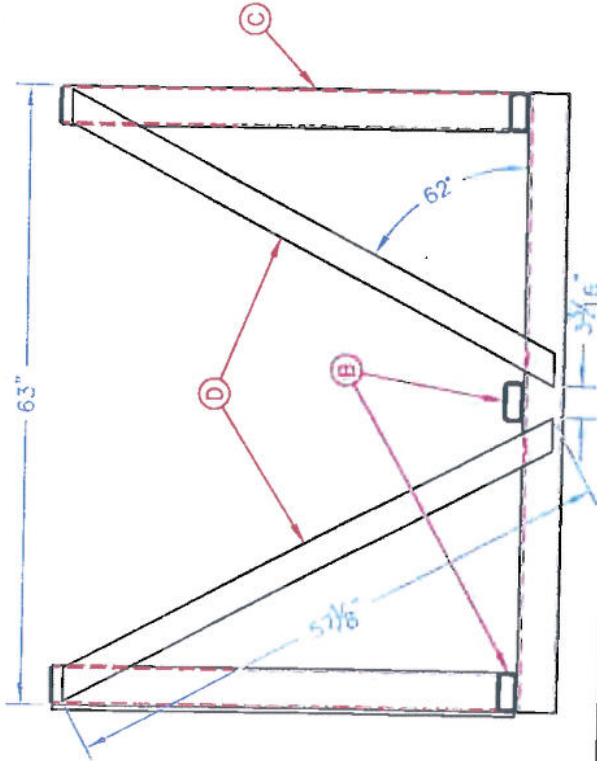
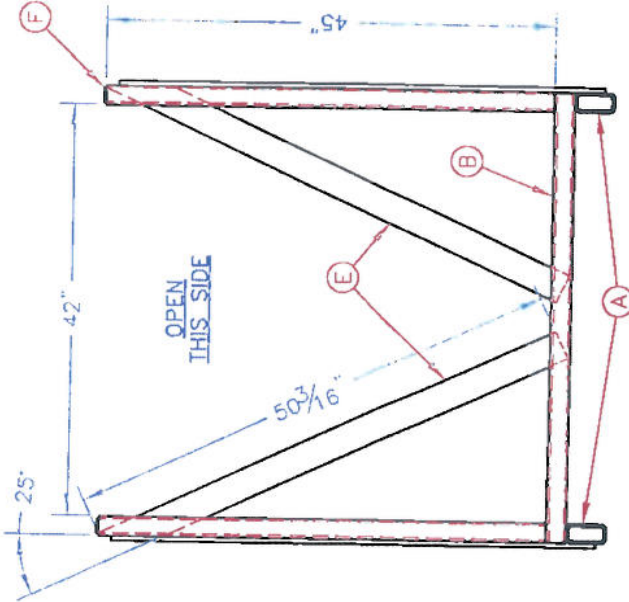
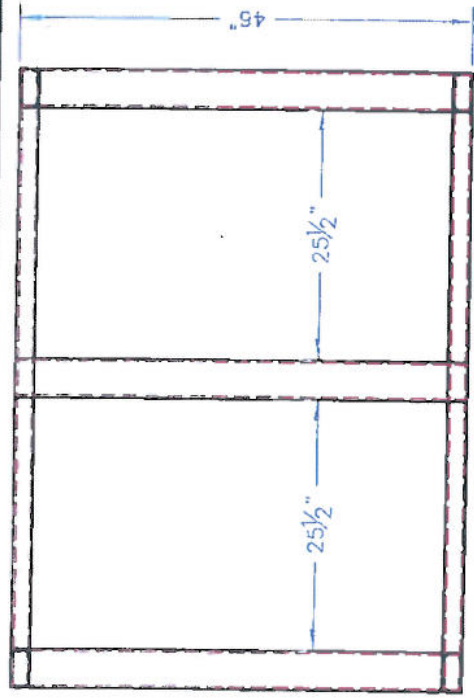
NOTE: PICK UP / DISCHARGE TUBE CAN BE MADE TO CUSTOM LENGTHS.

PINNACLE MFG
 615 West Hartsfield Ave
 Jacksonville, FL 32207
 Telephone 205 840-8031

REV	DESCRIPTION	DATE	BY	CHKD	APP'D
1	CHANGED ITEM 'L' & PIPE TO SCH10 CHANGE	10-04-12			

REVISION

NO	DESCRIPTION	PART NO	QTY	WT
A	TUBING 4" x 2" x 1/4" x 63" LO.		2	
B	TUBING 4" x 2" x 1/4" x 48" LO.		3	
C	TUBING 4" x 2" x 1/4" x 45" LO.		4	
D	F.B. 3" x 1/2" x 67 1/8" LO.		4	
E	F.B. 3" x 1/2" x 50 3/16" LO.		2	
F	1/4" FL. CAP		4	



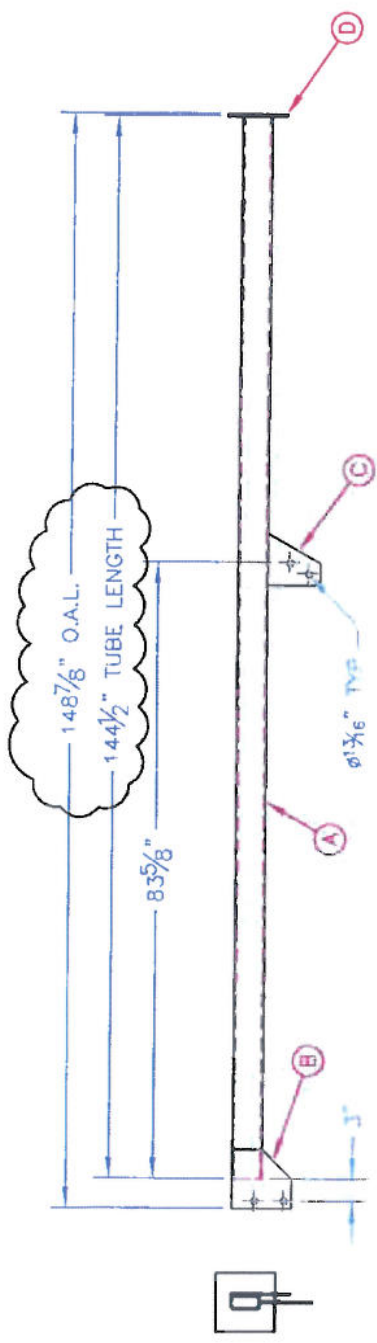
2-16-2013

PINNACLE MFG
 512 West Henderson Ave
 Mechanicsville, MD 21101
 (410) 426-1111
 FAX: (410) 426-1112
 www.pinnacle-mfg.com

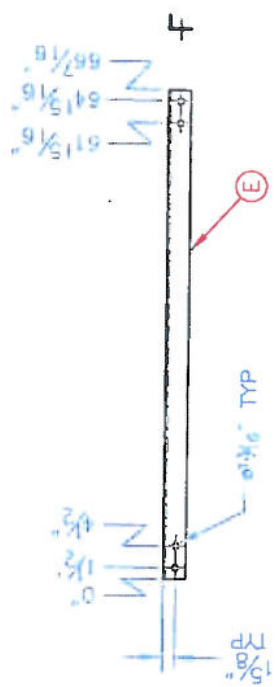
PT-42 Pool Tank

DATE: 11/13/12
 PART NO: B
 REV: 1

NO	DESCRIPTION	BURN FILES	QTY	WT
A	TUBE 4" x 2" x 1/4" WALL x 144 1/2" LG.		1	
B	PL 1/4" x 8" x 8" BURNOUT	POOL TANK PLATFORM PARTS	1	
C	PL 1/4" x 7 1/2" BURNOUT	POOL TANK PLATFORM PARTS	1	
D	PL 3/8" x 8" x 8"		1	
E	L 3" x 2" x 1/4" x 88 7/16" LG.		1	



COLUMN DETAIL



KICK BRACE DETAIL



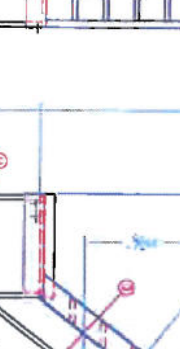
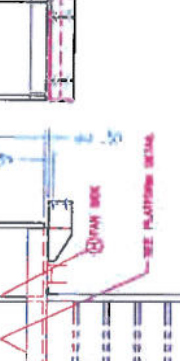
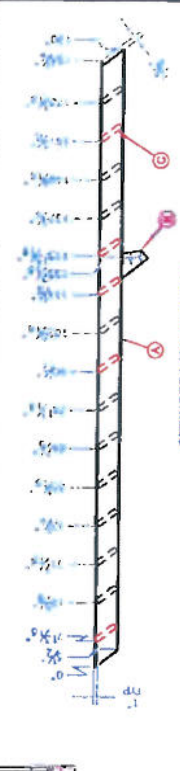
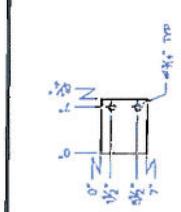
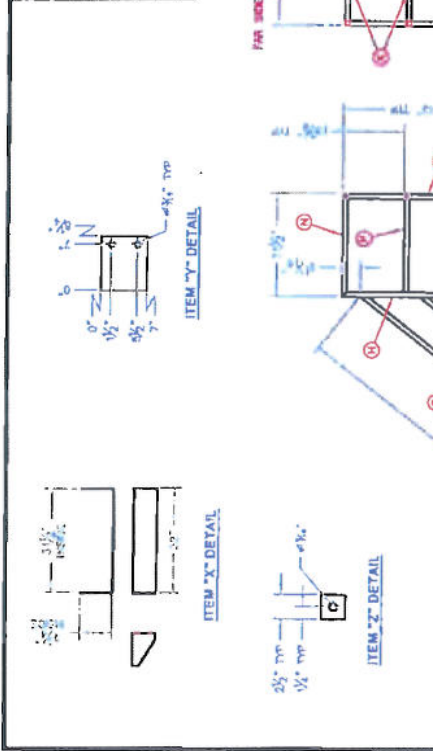
2-16-2013

PINNACLE MFG
 813 West Henderson Ave
 Prichard, Alabama 36607
 Telephone 205 840-8001
 FAX 205 840-8002
 WWW.PINNACLEMFG.COM
 Pinnacle Manufacturing
 Platform Support Column Detail
 Pool Tank PT-42

DATE	BY	CHKD	APP'D
DATE	BY	CHKD	APP'D

NO.	DESCRIPTION	QTY	UNIT
A	7" x 7" x 1/2" PL. 10' x 20' x 1/2" LG.	1	EA
B	PL. 1/4" x 8" x 3/8"	1	EA
C	PL. 1/4" x 8" x 3/8" BURNOUT	2	EA
D	GRIP STRUT 7" WIDE x 24"	15	EA
E	TUBE 1 1/2" OD. x 1 1/8" x 180 7/8" LG.	2	EA
F	TUBE 1 1/2" OD. x 1 1/8" x 82 1/2" LG.	4	EA
G	TUBE 1 1/2" OD. x 1 1/8" x 82 1/2" LG.	2	EA
H	TUBE 1 1/2" OD. x 1 1/8" x 82 1/2" LG.	2	EA
I	TUBE 1 1/2" OD. x 1 1/8" x 82 1/2" LG.	4	EA
J	TUBE 1 1/2" OD. x 1 1/8" x 47 1/8"	3	EA
K	TUBE 1 1/2" OD. x 1 1/8" x 47 1/8"	2	EA
L	TUBE 1 1/2" OD. x 1 1/8" x 22 1/2" LG.	1	EA
M	TUBE 1 1/2" OD. x 1 1/8" x 27 1/2" LG.	1	EA
N	TUBE 1 1/2" OD. x 1 1/8" x 27 1/2" LG.	1	EA
O	TUBE 1 1/2" OD. x 1 1/8" x 27 1/2" LG.	1	EA
P	PL. 1/4" x 7 3/8" x 48 1/4" BURNOUT	1	EA
Q	PL. 1/4" x 7 3/8" x 48 1/4" BURNOUT	1	EA
R	PL. 1/4" x 7 3/8" x 31 1/2" BURNOUT	1	EA
S	PL. 1/4" x 7 3/8" x 31 1/2" BURNOUT	1	EA
T	PL. 1/4" x 7 3/8" x 31 1/2" BURNOUT	1	EA

NO.	DESCRIPTION	QTY	UNIT
U	1 1/2" x 1 1/2" x 1/4" GRATING	1	EA
V	PL. 1/4" x 8" x 3/8"	1	EA
W	PL. 1/4" x 8" x 3/8"	2	EA
X	PL. 1/4" x 7" x 3/8" BURNOUT (SEE DETAIL)	1	EA
Y	PL. 3/8" x 7" x 1/4" BURNOUT (SEE DETAIL)	2	EA
Z	PL. 3/8" x 7" x 1/4" BURNOUT (SEE DETAIL)	2	EA
AA	GRATING 24" x 42" 3/4"	1	EA
BB	PL. 1/4" x 7" x 3/8" LG.	1	EA



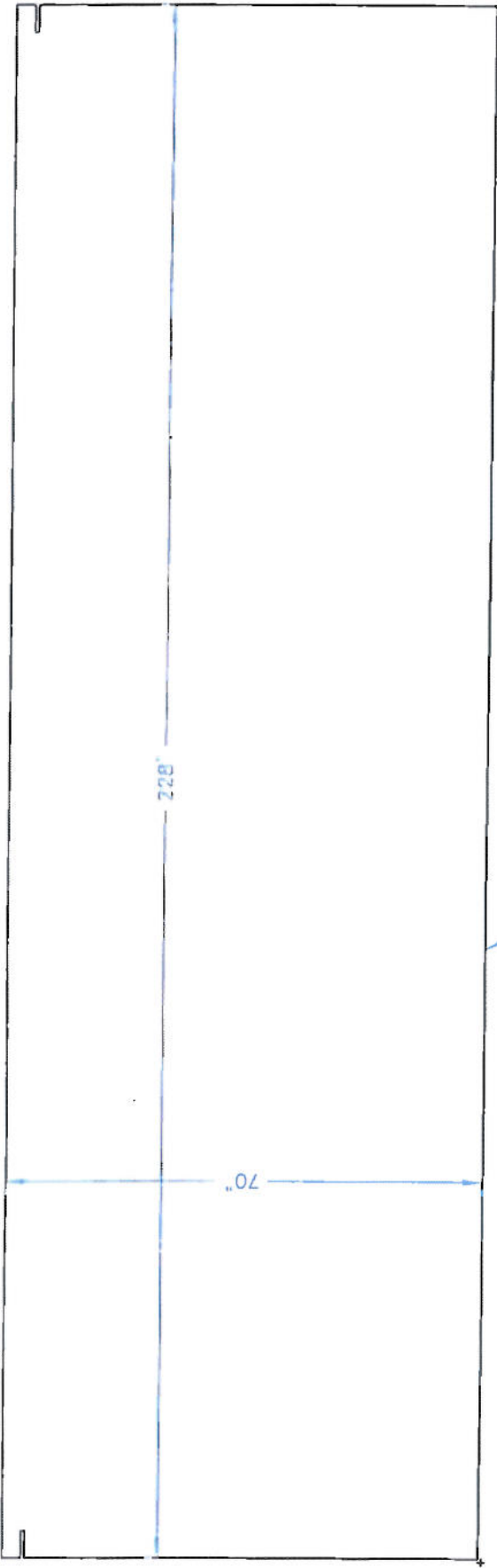


2-16-2013

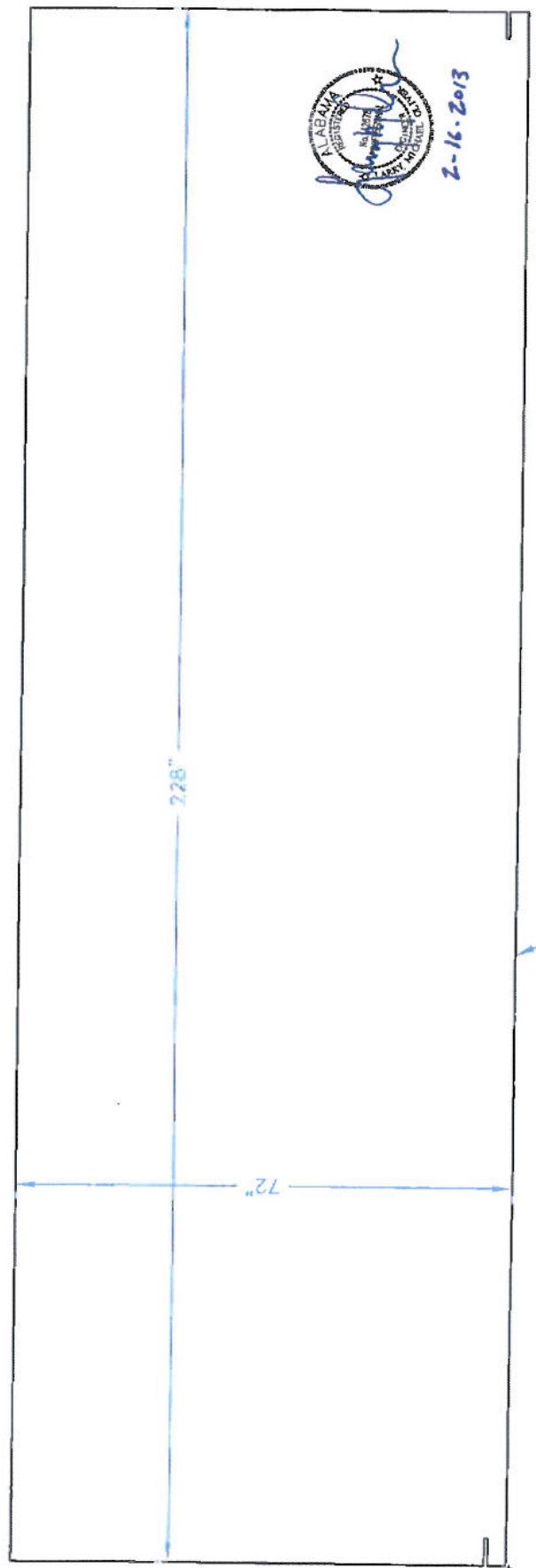
PINNACLE MFG
512 West Henderson Ave
Boca, Alabama 36007
Telephone 206 840-8003

Stair & Platform Detail
Pool Tank PT-42

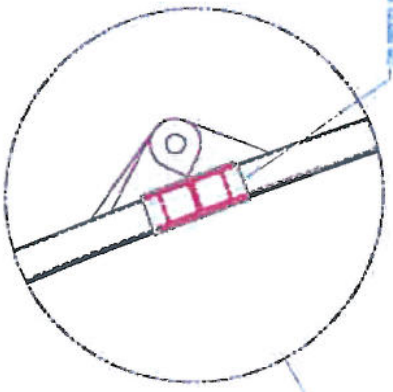
NO.	DESCRIPTION	QTY	UNIT	DATE	BY	CHKD	APP'D
1	REVISION						



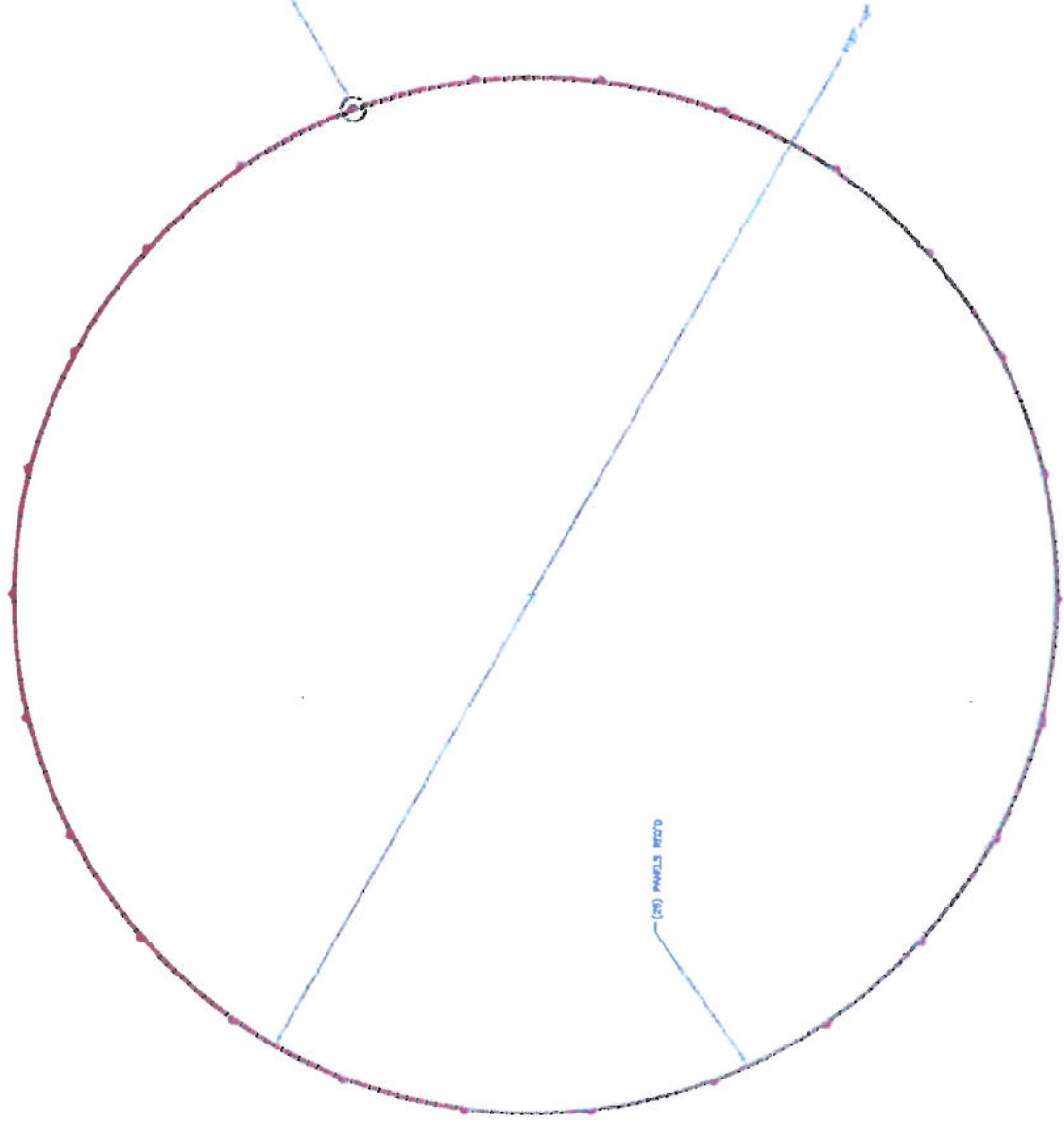
1/4" TOP PANEL PLATE



1/4" BOTTOM PANEL PLATE



FOR REFERENCE ONLY



(20) PIPING INFO



2-16-2013

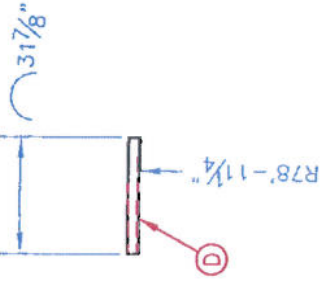
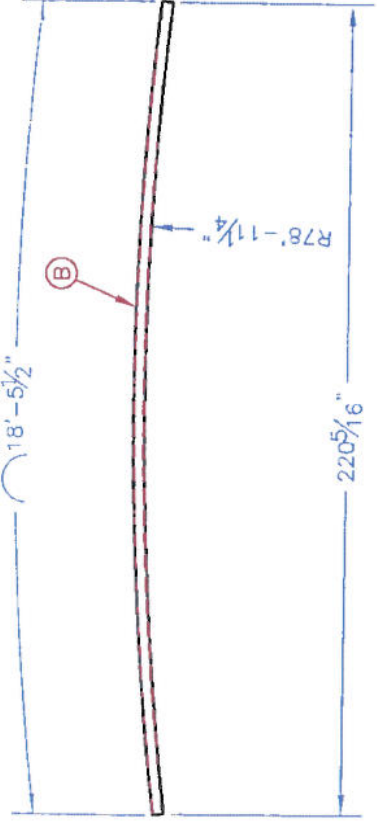
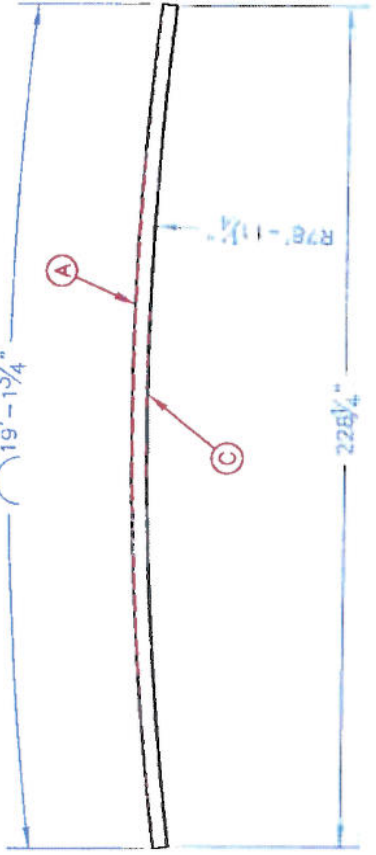
PINNACLE MFG
 617 West Montgomery Ave
 Gadsden, Alabama 35907
 Telephone 205 842-8001

Mobile Water Tank #7-42
 Plan View 42,385 BBL

DATE	BY	CHKD	APP'D

NO	DESCRIPTION	PART NO	QTY	WT
A	TUBE 4" SQ. x 1/4" WALL		2	
B	TUBE 3" SQ. x 1/4" WALL		4	
C	PL 1/4" x 72" x 228"		2	
D	TUBE 3" SQ. x 1/4" WALL		11	

MATERIAL REQ'D FOR (1) PANEL



2-16-2013

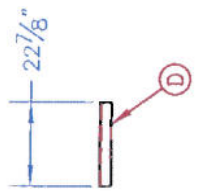
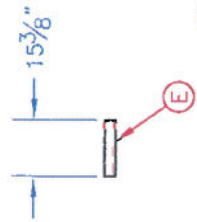
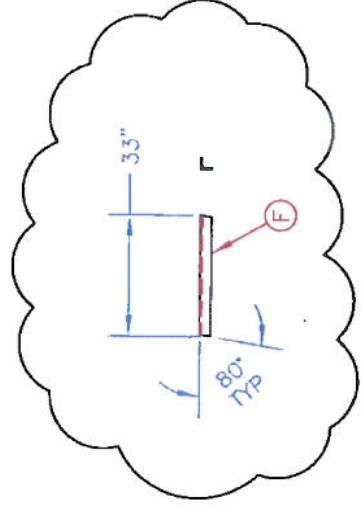
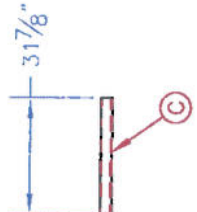
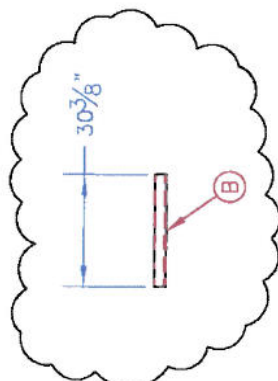
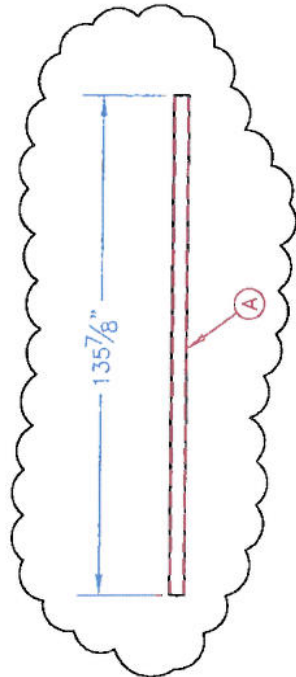
PINNACLE MFG
 815 Wood Henderson Ave
 Doak, Alabama, 36037
 Telephone 256-840-8031

Roller Tube Detail
 Pool Tank PT-42

NO	REVISION	DATE	BY	APP'D
1				

NO	DESCRIPTION	PART NO	QTY	WT
A	TUBE 4" SQ. x 1/4" WALL x 135 7/8" LG.		2	
B	TUBE 3" SQ. x 1/4" WALL x 30 3/8" LG.		2	
C	TUBE 3" SQ. x 1/4" WALL x 31 7/8" LG.		2	
D	TUBE 3" SQ. x 1/4" WALL x 22 7/8" LG.		5	
E	TUBE 3" SQ. x 1/4" WALL x 15 3/8" LG.		2	
F	L 3" x 3" x 3/8" x 33" LG.		2	

MATERIAL REQ'D FOR (1) PANEL



2-16-2013

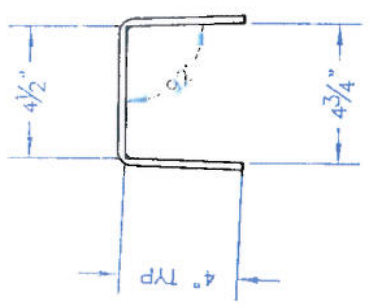
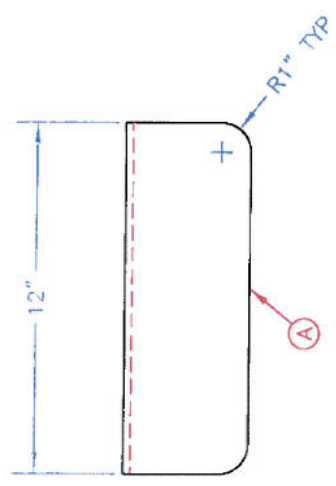
PINNACLE MFG
 312 West Henderson Ave
 Bessemer, Alabama 35887
 Telephone 205 940-8811

Vertical Tube Detail
 Pool Tank PT-42

DATE: 2-16-2013
 DRAWN BY: [Signature]
 CHECKED BY: [Signature]

SCALE: 1/8" = 1'-0"
 SHEET NO. 2

NO	DESCRIPTION	PART NO	QTY	WT
A	PL 14" x 12" x 12 1/2"		26	



2-16-2013

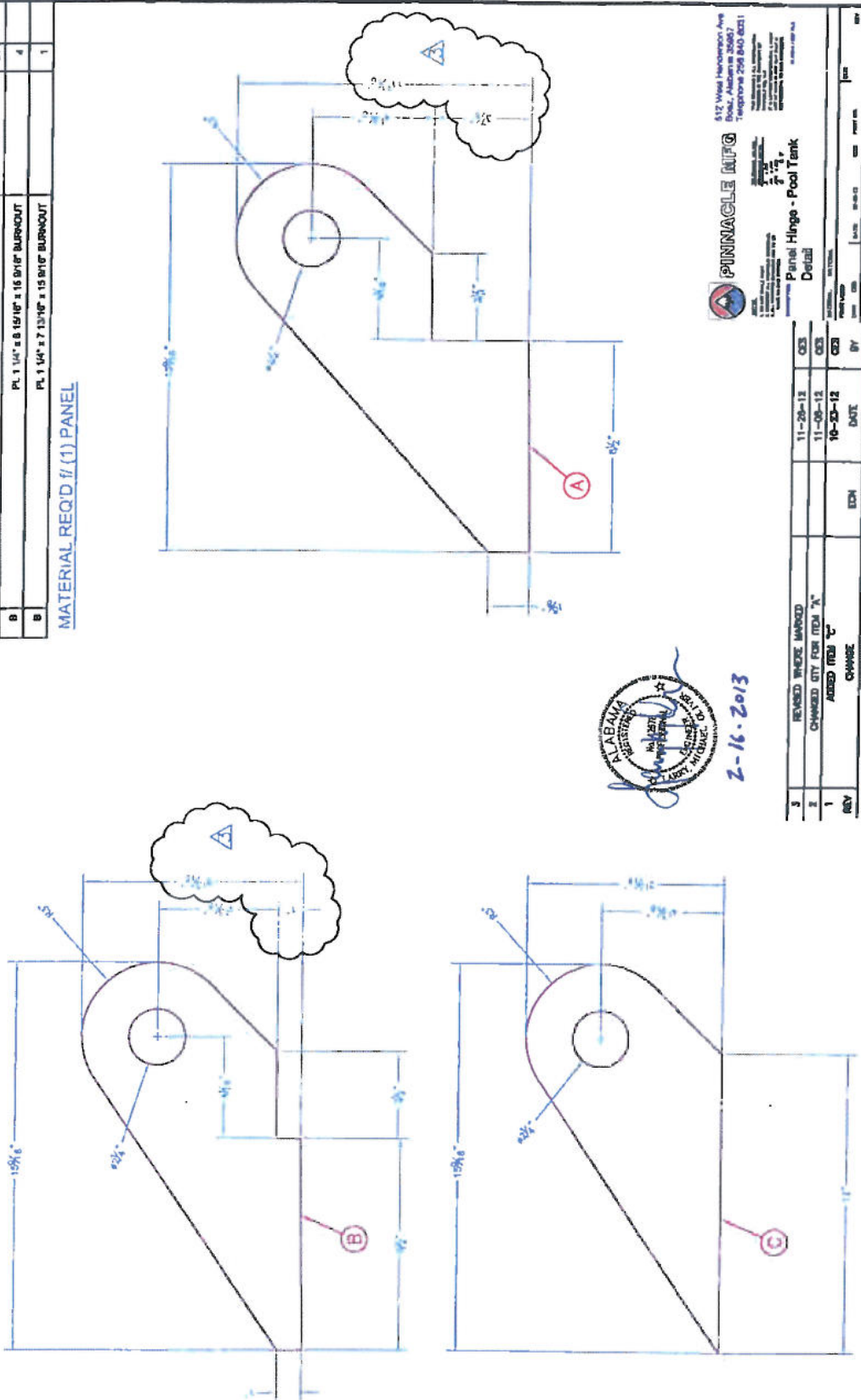
PINNACLE MFG
 612 West Henderson Ave
 Prattville, Alabama 36068
 Telephone: 205-340-0001
 Fax: 205-340-0002
 Email: sales@pinnacle-mfg.com
 Website: www.pinnacle-mfg.com
 ISO 9001:2008 Certified
 Pinnacle Mfg. is a member of the
 Alabama Manufacturing Association
 (AMA) and the Alabama Pool & Spa
 Association (APSA).

Felt Retainer - Pool Tank
 Detail

DATE	BY	CHKD	APP'D
SCALE	REV	DESCRIPTION	DATE
	8		

NO.	DESCRIPTION	PART NO.	QTY.	WT.
A	PL 1 1/4" x 11 1/2" x 15 8/16" BURROUT		21	
B	PL 1 1/4" x 8 15/16" x 16 8/16" BURROUT		4	
B	PL 1 1/4" x 7 13/16" x 15 8/16" BURROUT		1	

MATERIAL REQ'D f/ (1) PANEL



ALABAMA
REGISTERED
ARCHITECT
LABOR CONTRACTORS
2-16-2013

Pinnacle MFG
612 Vogel Henderson Ave
Birmingham, AL 35202
Telephone 205 840 8231

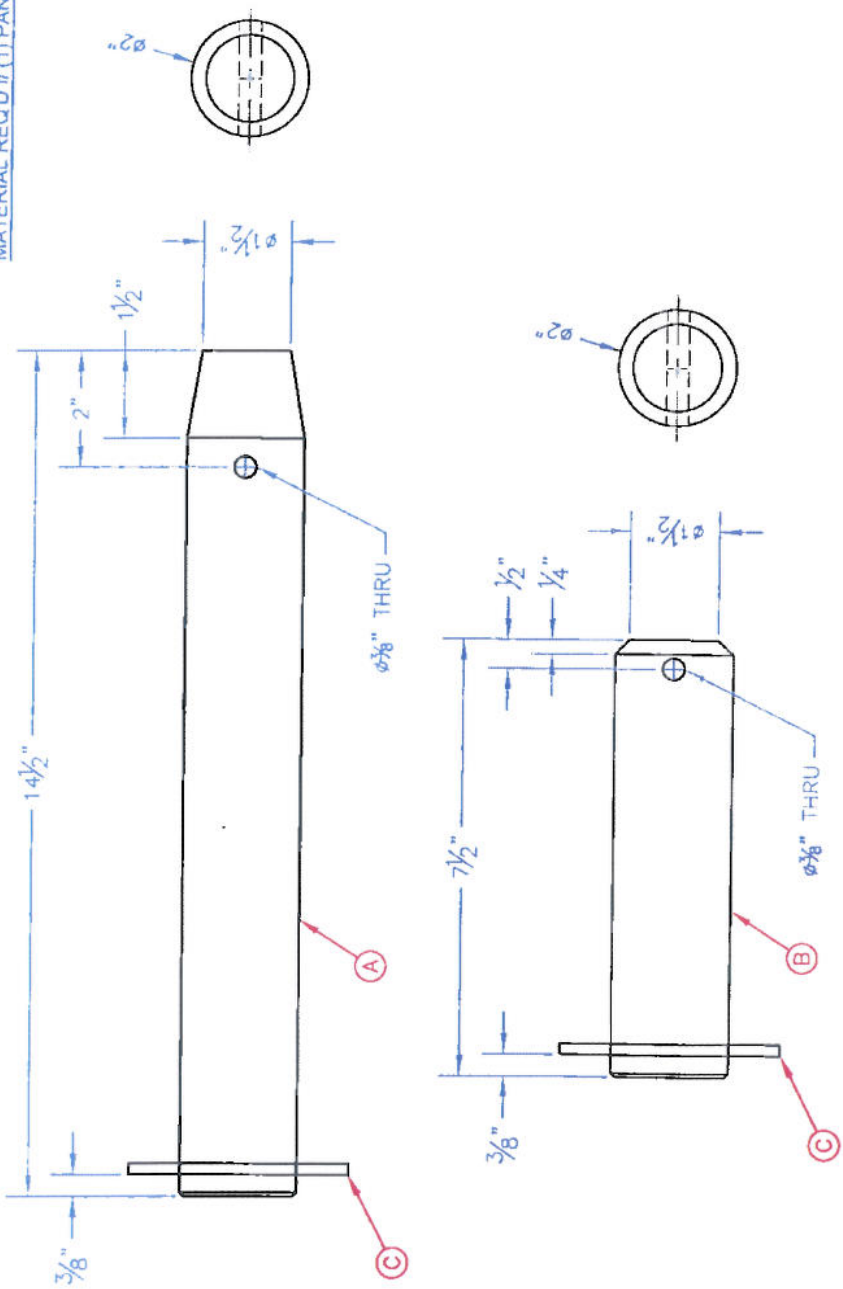
Panel Hinge - Pool Tank
Detail

REV	DESCRIPTION	DATE	BY
3	REVISED WHERE MARKED	11-29-12	OCB
2	CHANGED QTY FOR ITEM "A"	11-09-12	OCB
1	ADDED ITEM "C"	10-29-12	OCB
	CHANGE		

REVISION		DATE	BY
1			
2			
3			

NO	DESCRIPTION	PART NO	QTY	WT
A	CR 827 x 14 1/2" LG.		4	
B	CR 827 x 7 1/2" LG.		2	
C	WASHER 3/8" O.D. x 2 1/4" I.D.		8	
D	LOCK PIN 827/1P x 2 1/2" FASTENALL 80127027		5	

MATERIAL REQ'D # (1) PANEL

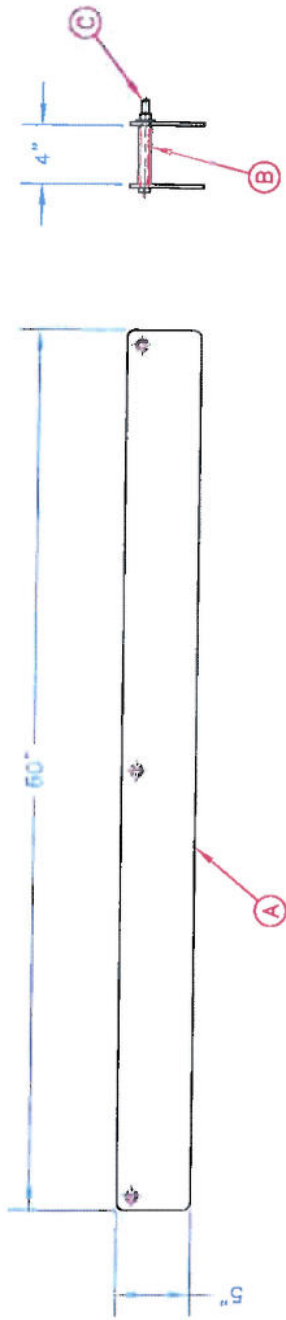


2-16-2013

PINNACLE MFG
 313 West Independence Ave
 Boaz, Alabama 36007
 Telephone 256 840-8331
 FAX 256 840-8331
 www.pinnacle-mfg.com
 Panel Hinge Pin - Pool Tank
 Detail

NO	DATE	BY	CHKD	APP'D	REVISION
1	11-02-13				1
2	10-02-13				2

NO	DESCRIPTION	PART NO	QTY	WT
A	PL 1/4" x 3" x 60" BURNDOUT		2	
B	PIPE 1/2" SCH40 x 4" LG.		3	
C	BOLT 5/16" x 6" LG. 6W F.W. & LOCKWIT		3	



2-16-2013

PINNACLE MFG
 212 West Montgomery Ave
 Escal, Alabama 36027
 Telephone 256 842-8831

Pool Clamp Detail

DATE	REV	BY	APP
	1		