

**EQUIPMENT LIABILITY** - Operator shall at its risk and expense attempt to recover any Contractor equipment lost or lodged in a well. If a radioactive source becomes lost or lodged in a well, Operator shall meet all requirements of Section 39.15(a) of the Nuclear Regulatory Commission regulations and any other applicable state or federal laws or regulations concerning retrieval or abandonment, including without limitation regulations of the Nuclear Regulatory Commission. Operator shall permit Contractor to monitor the recovery or abandonment efforts all at no risk or liability to Contractor. Notwithstanding any indemnity regarding Contractor's property, (i) Operator shall be responsible for damages to or loss of Contractor equipment, products, and materials while in transit aboard Operator-supplied transportation, even if such is arranged by Contractor at Operator's request, and during loading and unloading from such transport, and Operator (ii) will also pay for the repair or replacement of Contractor equipment damaged by corrosion or abrasion due to well effluents.

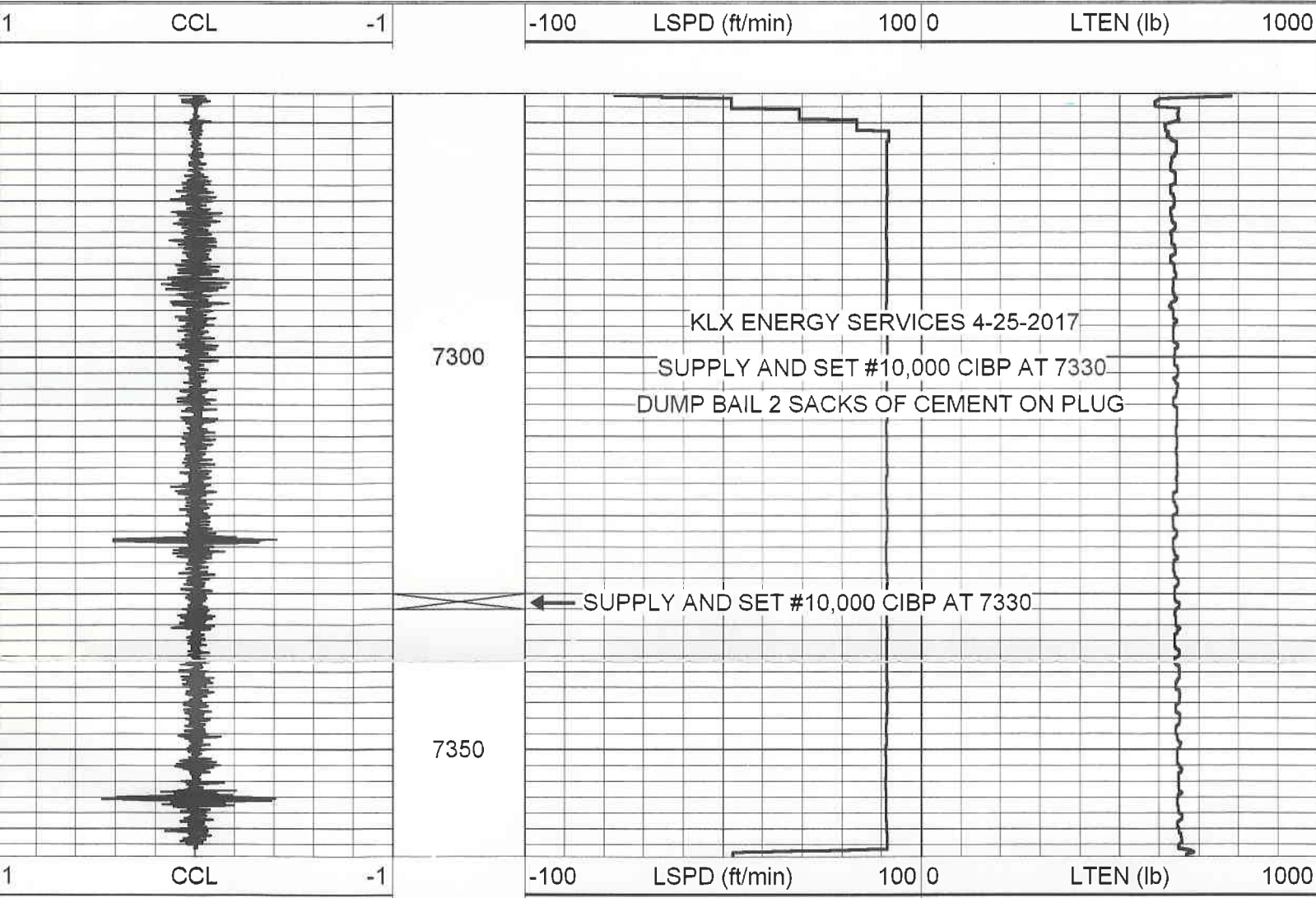
District Manager: James Stevenson

Customer Representative:

2 of 3

# LEISTIKOW #1

Database File: bluechipleistikow.db  
 Dataset Pathname: pass4  
 Presentation Format: ccl  
 Dataset Creation: Tue Apr 25 10:47:46 2017 by Log 7.0 B1  
 Charted by: Depth in Feet scaled 1:240



Database File: bluechipleistikow.db  
Dataset Pathname: pass11  
Presentation Format: ccl  
Dataset Creation: Tue Apr 25 12:14:45 2017 by Log 7.0 B1  
Charted by: Depth in Feet scaled 1:240

