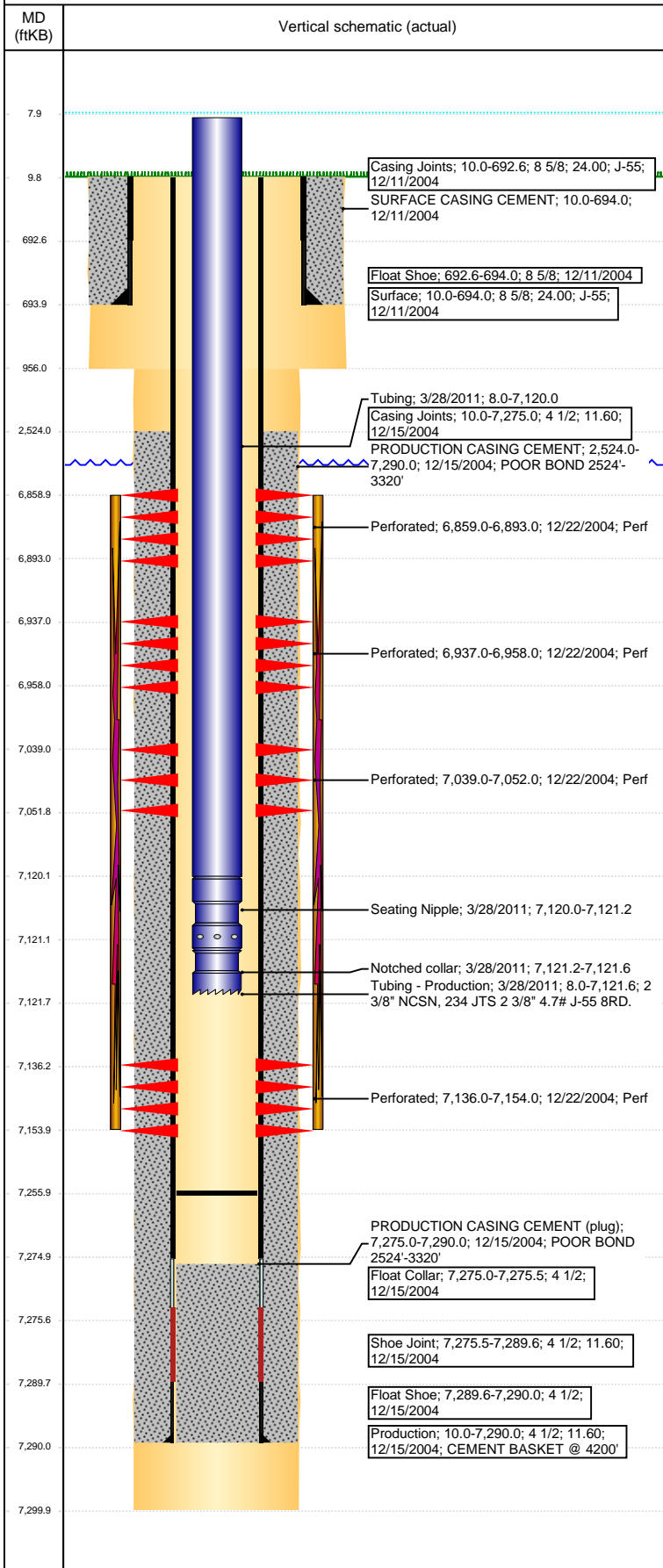


Well Name: KESSLER 19-22

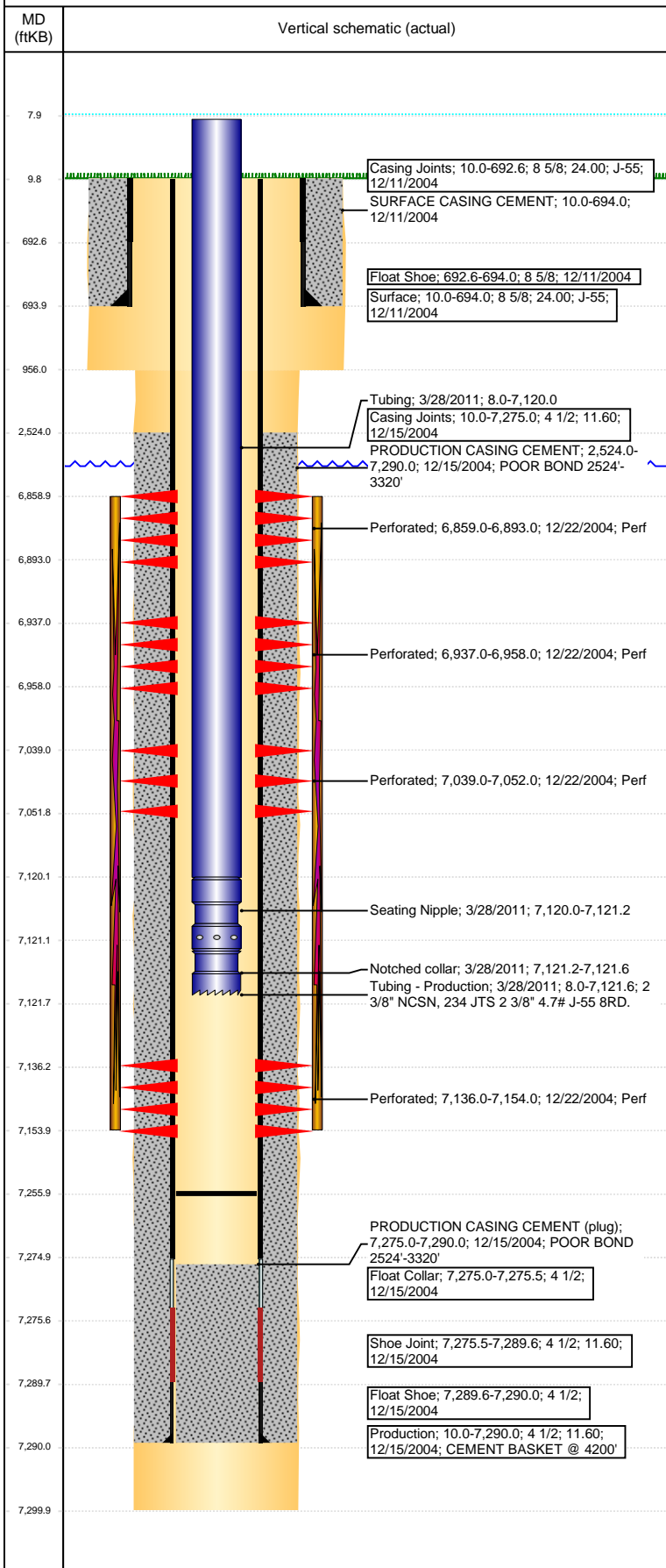
VERTICAL - ORIGINAL HOLE, 4/28/2017 10:19:37 AM



Well Header							
API 05-123-22380	Business Unit DJ BASIN	District 15	Well Config VERTICAL				
Original KB Elevation (ft) 4,800	KB - GL / MSL (ftKB) 10.00	Spud Date 12/10/2004		P & A Date			
Comment FRAC'D INTO 2008 POOR CEMENT BOND TOC - 3320'							
Directions To Well HWY 392 & RDS 27, WEST 3/4, SOUTH 1/10, WEST TO 2ND WELLHEAD.							
Congressional Location							
Quarter 3 NW	Quarter 4 NW	Section 19	Township 6	Twnshp N/S Dir N	Range 66	Range E/W Dir W	
Bottom Hole Location							
North-South Distance (ft)		From N or S Line	East-West Distance (ft)		From E or W Line		
Plug Back Total Depths							
Date	Depth (ftKB)	Method		Com			
12/15/2004	7,275.0	CASING TALLY		TOP OF FLOAT COLLAR			
12/21/2004	7,220.0	CASED HOLE LOG		DEPTH LOGGER ON CBL			
3/28/2011	7,256.0	TAG		TBG TALLY			
Wellbore Sections							
Section Des		Size (in)	Act Top, MD (ftKB)		Act Btm, MD (ftKB)		
SURFACE		12 1/4	10		956		
PRODUCTION		7 7/8	956		7,300		
Zone Statuses							
Zone Name	Status Date	Status	Fluid Type	Job	Prod Method		
CODELL	1/4/2005	PR	Water	DRILLING/CO...	Flowing		
CODELL	3/29/2011	PR					
CODELL	1/19/2015	PR					
NIOBRARA	1/4/2005	PR	Water	DRILLING/CO...	Flowing		
NIOBRARA	3/29/2011	PR					
NIOBRARA	1/19/2015	PR					
Casing Strings							
Surface, 694.0ftKB							
Casing Description	Run Date	OD (in)	Wt/Len (l...	Grade	Top, MD (ft...	MD (ftKB)	
Surface	12/11/2004	8 5/8	24.00	J-55	10.0	694.0	
Production, 7,290.0ftKB							
Casing Description	Run Date	OD (in)	Wt/Len (l...	Grade	Top, MD (ft...	MD (ftKB)	
Production	12/15/2004	4 1/2	11.60	J-55	10.0	7,290.0	
Cement							
Description				Top Depth (ftKB)		Bottom Depth (ftKB)	
SURFACE CASING CEMENT				10.0		694.0	
Description				Top Depth (ftKB)		Bottom Depth (ftKB)	
PRODUCTION CASING CEMENT				2,524.0		7,290.0	
Tubing Strings							
Tubing Description	Run Date	String...	ID (in)	Wt (lb/ft)	Grade	Len (ft)	Set De...
Tubing - Production	7/11/2005	2 3/8	1.87	4.70	J-55	7,111.00	
Tubing Description	Run Date	String...	ID (in)	Wt (lb/ft)	Grade	Len (ft)	Set De...
Tubing - Production	3/28/2011	2 3/8	2.00	4.70	J-55	7,113.64	
Tubing Components							
Item Des	OD (in)	Wt (lb/ft)	Grade	Jts	Len (ft)	Btm (ftKB)	Btm (TVD) (ftKB)
Tubing	2 3/8	4.70	J-55	234	7,111.99	7,120.0	
Seating Nipple	2 3/8	5.40	J-55	1	1.20	7,121.2	
Notched collar	2 3/8		J-55	1	0.45	7,121.6	
Other In Hole							
Run Date	Des			OD (in)	Top (ftKB)	Btm (ftKB)	
Logs							
Date	Type				Top, MD (ftKB)	Btm, MD (ftKB)	
12/16/2004	COMPENSATED DENSITY				3,550.0	7,272.0	
12/16/2004	INDUCTION				688.0	7,292.0	
12/21/2004	CBL/CCL/GR				2,300.0	7,218.0	

Well Name: KESSLER 19-22

VERTICAL - ORIGINAL HOLE, 4/28/2017 10:19:39 AM



Perforation Data					
Linked Zone	Bnch/St g	Sum of Entered Shot Total	Top (ftKB)	Btm (ftKB)	Date
NIOBRARA, ORIGINAL HOLE	A	0	6,859.00	6,893.00	12/22/2004
NIOBRARA, ORIGINAL HOLE	B	0	6,937.00	6,958.00	12/22/2004
NIOBRARA, ORIGINAL HOLE	C	0	7,039.00	7,052.00	12/22/2004
CODELL, ORIGINAL HOLE		0	7,136.00	7,154.00	12/22/2004
Total (Sum)		0			
Stimulation Intervals					
Start Date		Primary Job Type			
12/29/2004		DRILLING/COMPLETION - ORIGINAL			
Technical Result		Tech Result Details		Tech Result Note	
Comment					
LIMITED ENTRY					