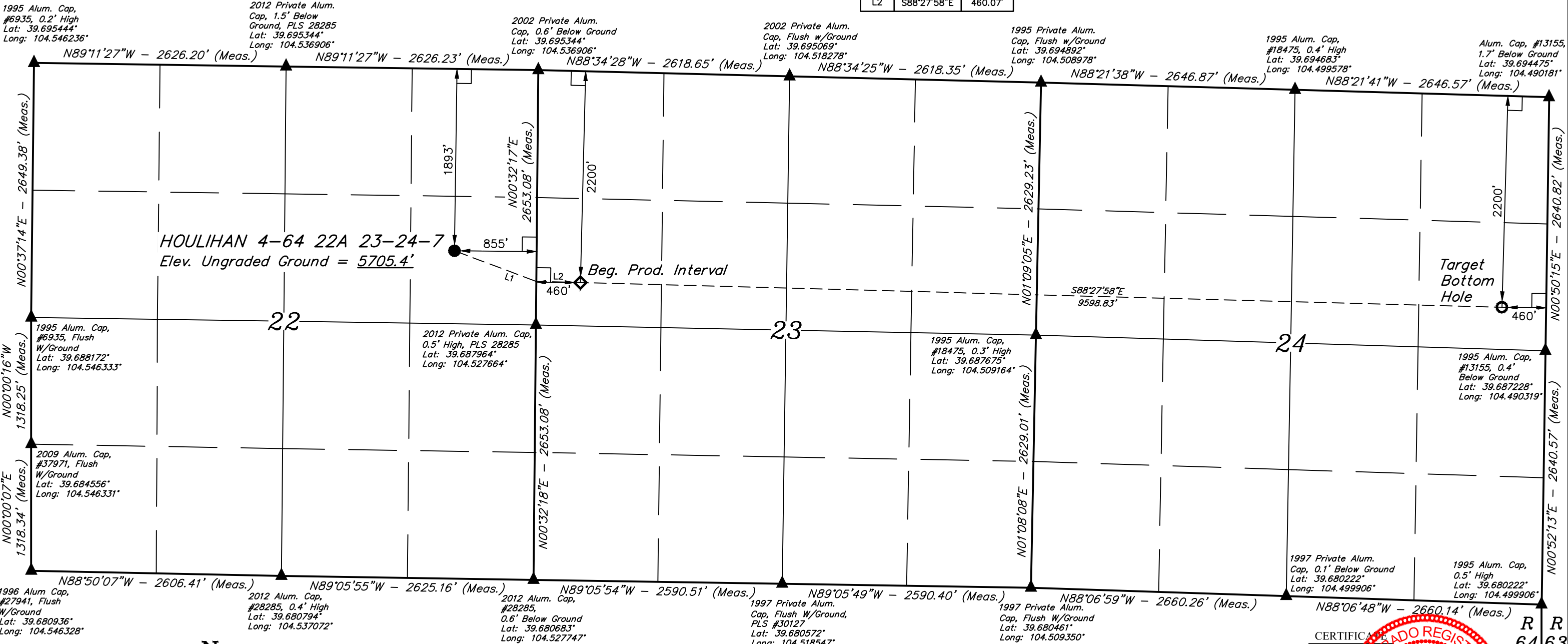


T4S, R64W, 6th P.M.

LINE TABLE		
LINE	DIRECTION	LENGTH
L1	S69°30'56"E	909.82'
L2	S88°27'58"E	460.07'

BISON EXPLORATION

HOULIHAN 4-64 22A 23-24-7  
SE 1/4 NE 1/4, SECTION 22, T4S, R64W, 6th P.M.  
ARAPAHOE COUNTY, COLORADO



- LEGEND:
- 90° SYMBOL
  - PROPOSED WELLHEAD.
  - PRODUCTION INTERVAL.
  - TARGET BOTTOM HOLE.
  - SECTION CORNERS LOCATED. (NAD 83)

**BASIS OF BEARINGS**  
BASIS OF BEARINGS IS A G.P.S. OBSERVATION

**BASIS OF ELEVATION**  
USGS COOPERATIVE BASE NETWORK CONTROL STATION,  
DESIGNATION "K 374". NGS DATA SHEET LISTS THE NAVD 88  
ELEVATION AS BEING 6054.61 FEET.

SURFACE LOCATION 1893' FNL 855' FEL	BEG. PROD. INTERVAL 2200' FNL 460' FWL	TARGET BOTTOM HOLE 2200' FNL 460' FEL
NAD 83 (SURFACE LOCATION)	NAD 83 (BEG. PROD. INTERVAL)	NAD 83 (TARGET BOTTOM HOLE)
LATITUDE = 39°41'24.30" (39.690083)	LATITUDE = 39°41'21.03" (39.689175)	LATITUDE = 39°41'18.50" (39.688472)
LONGITUDE = 104°31'50.43" (104.530675)	LONGITUDE = 104°31'33.65" (104.526014)	LONGITUDE = 104°29'30.94" (104.491928)
NAD 27 (SURFACE LOCATION)	NAD 27 (BEG. PROD. INTERVAL)	NAD 27 (TARGET BOTTOM HOLE)
LATITUDE = 39°41'24.35" (39.690097)	LATITUDE = 39°41'21.08" (39.689189)	LATITUDE = 39°41'18.55" (39.688486)
LONGITUDE = 104°31'48.56" (104.530156)	LONGITUDE = 104°31'31.78" (104.525494)	LONGITUDE = 104°29'29.08" (104.491411)
STATE PLANE NAD 83 (CO. CENTRAL)	STATE PLANE NAD 83 (CO. CENTRAL)	STATE PLANE NAD 83 (CO. CENTRAL)
N: 1677696.96 E: 3272784.20	N: 1677380.78 E: 3274099.57	N: 1677229.29 E: 3283694.38
STATE PLANE NAD 27 (CO. CENTRAL)	STATE PLANE NAD 27 (CO. CENTRAL)	STATE PLANE NAD 27 (CO. CENTRAL)
N: 677689.97 E: 2272937.67	N: 677373.81 E: 2274253.03	N: 677222.51 E: 2283847.80

PDOP = 1.6

CERTIFICATE OF REGISTRATION  
THIS IS TO CERTIFY THAT THE ABOVE PLAT WAS PREPARED FROM FIELD  
NOTES OF ACTUAL SURVEYS MADE BY ME OR UNDER MY SUPERVISION  
AND THAT THE SAME ARE TRUE AND CORRECT TO THE BEST OF MY  
KNOWLEDGE AND BELIEF.

REGISTERED LAND SURVEYOR  
REGISTRATION NO. 28285  
STATE OF COLORADO  
J.J. JONES

REV: 1 03-14-17 J.J. (SURFACE HOLE MOVE)



UELS, LLC  
Corporate Office \* 85 South 200 East  
Vernal, UT 84078 \* (435) 789-1017

SURVEYED BY	NIGEL POLL, G.W.	02-13-17	SCALE
DRAWN BY	J.J.	02-16-17	1" = 1000'

WELL LOCATION PLAT