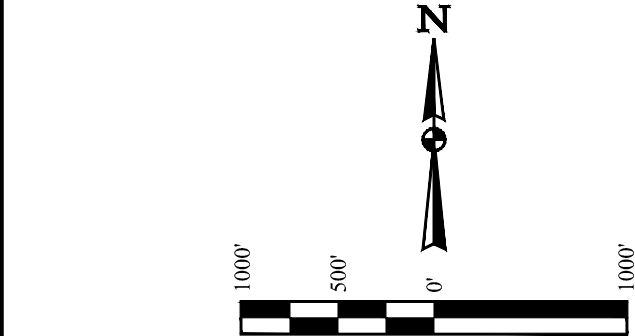
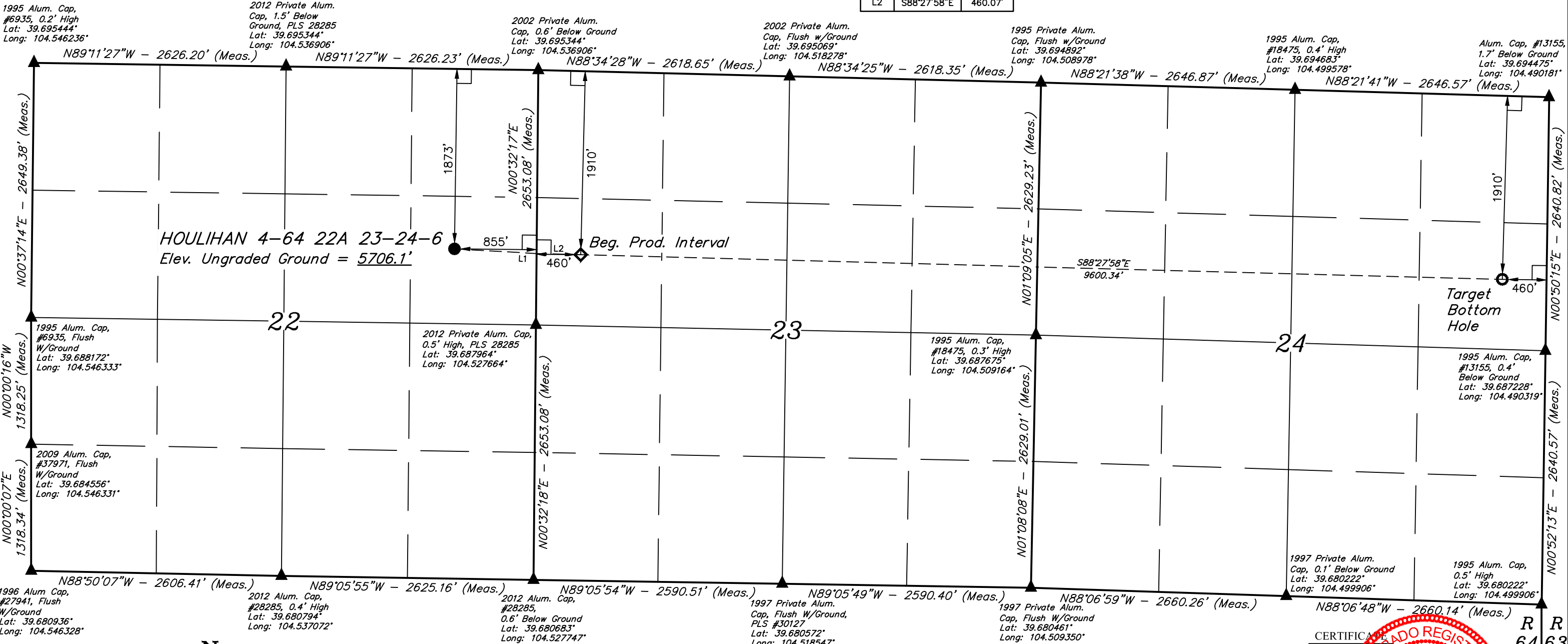


T4S, R64W, 6th P.M.

LINE TABLE		
LINE	DIRECTION	LENGTH
L1	S86°45'43"E	856.30'
L2	S88°27'58"E	460.07'

BISON EXPLORATION

HOULIHAN 4-64 22A 23-24-6
SE 1/4 NE 1/4, SECTION 22, T4S, R64W, 6th P.M.
ARAPAHOE COUNTY, COLORADO



- LEGEND:**
- 90° SYMBOL
 - PROPOSED WELLHEAD.
 - PRODUCTION INTERVAL.
 - TARGET BOTTOM HOLE.
 - SECTION CORNERS LOCATED. (NAD 83)

BASIS OF BEARINGS
BASIS OF BEARINGS IS A G.P.S. OBSERVATION

BASIS OF ELEVATION
USGS COOPERATIVE BASE NETWORK CONTROL STATION,
DESIGNATION "K 374". NGS DATA SHEET LISTS THE NAVD 88
ELEVATION AS BEING 6054.61 FEET.

SURFACE LOCATION 1873' FNL 855' FEL	BEG. PROD. INTERVAL 1910' FNL 460' FWL	TARGET BOTTOM HOLE 1910' FNL 460' FEL
NAD 83 (SURFACE LOCATION)	NAD 83 (BEG. PROD. INTERVAL)	NAD 83 (TARGET BOTTOM HOLE)
LATITUDE = 39°41'24.50" (39.690139)	LATITUDE = 39°41'23.90" (39.689972)	LATITUDE = 39°41'21.37" (39.689269)
LONGITUDE = 104°31'50.43" (104.530675)	LONGITUDE = 104°31'33.62" (104.526006)	LONGITUDE = 104°29'30.89" (104.491914)
NAD 27 (SURFACE LOCATION)	NAD 27 (BEG. PROD. INTERVAL)	NAD 27 (TARGET BOTTOM HOLE)
LATITUDE = 39°41'24.55" (39.690153)	LATITUDE = 39°41'23.95" (39.689986)	LATITUDE = 39°41'21.42" (39.689283)
LONGITUDE = 104°31'48.56" (104.530156)	LONGITUDE = 104°31'31.75" (104.525486)	LONGITUDE = 104°29'29.02" (104.491394)
STATE PLANE NAD 83 (CO. CENTRAL)	STATE PLANE NAD 83 (CO. CENTRAL)	STATE PLANE NAD 83 (CO. CENTRAL)
N: 1677716.95 E: 3272784.07	N: 1677670.73 E: 3274099.11	N: 1677519.23 E: 3283695.44
STATE PLANE NAD 27 (CO. CENTRAL)	STATE PLANE NAD 27 (CO. CENTRAL)	STATE PLANE NAD 27 (CO. CENTRAL)
N: 677709.95 E: 2272937.54	N: 677663.76 E: 2274252.57	N: 677512.44 E: 2283848.85

PDOP = 1.6

CERTIFICATE OF REGISTRATION
THIS IS TO CERTIFY THAT THE ABOVE PLAT WAS PREPARED IN ACCORDANCE WITH THE NOTES OF ACTUAL SURVEYS MADE IN THE FIELD UNDER MY SUPERVISION, AND THAT THE SAME ARE TRUE AND CORRECT TO THE BEST OF MY KNOWLEDGE AND BELIEF.

REGISTERED LAND SURVEYOR
REGISTRATION NO. 28285
STATE OF COLORADO
J.J. JONES

REV: 1 03-14-17 J.J. (SURFACE HOLE MOVE)



UELS, LLC
Corporate Office * 85 South 200 East
Vernal, UT 84078 * (435) 789-1017

SURVEYED BY	NIGEL POLL, G.W.	02-13-17	SCALE
DRAWN BY	J.J.	02-16-17	1" = 1000'

WELL LOCATION PLAT