

*T4S, R64W, 6th P.M.*

## BISON EXPLORATION

**HOULIHAN 4-64 22A 21-1**  
**SE 1/4 NE 1/4, SECTION 22, T4S, R64W, 6th P.M.**  
**ARAPAHOE COUNTY, COLORADO**

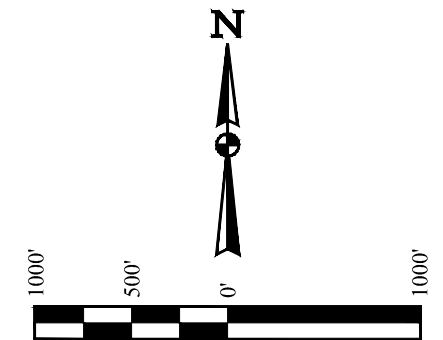
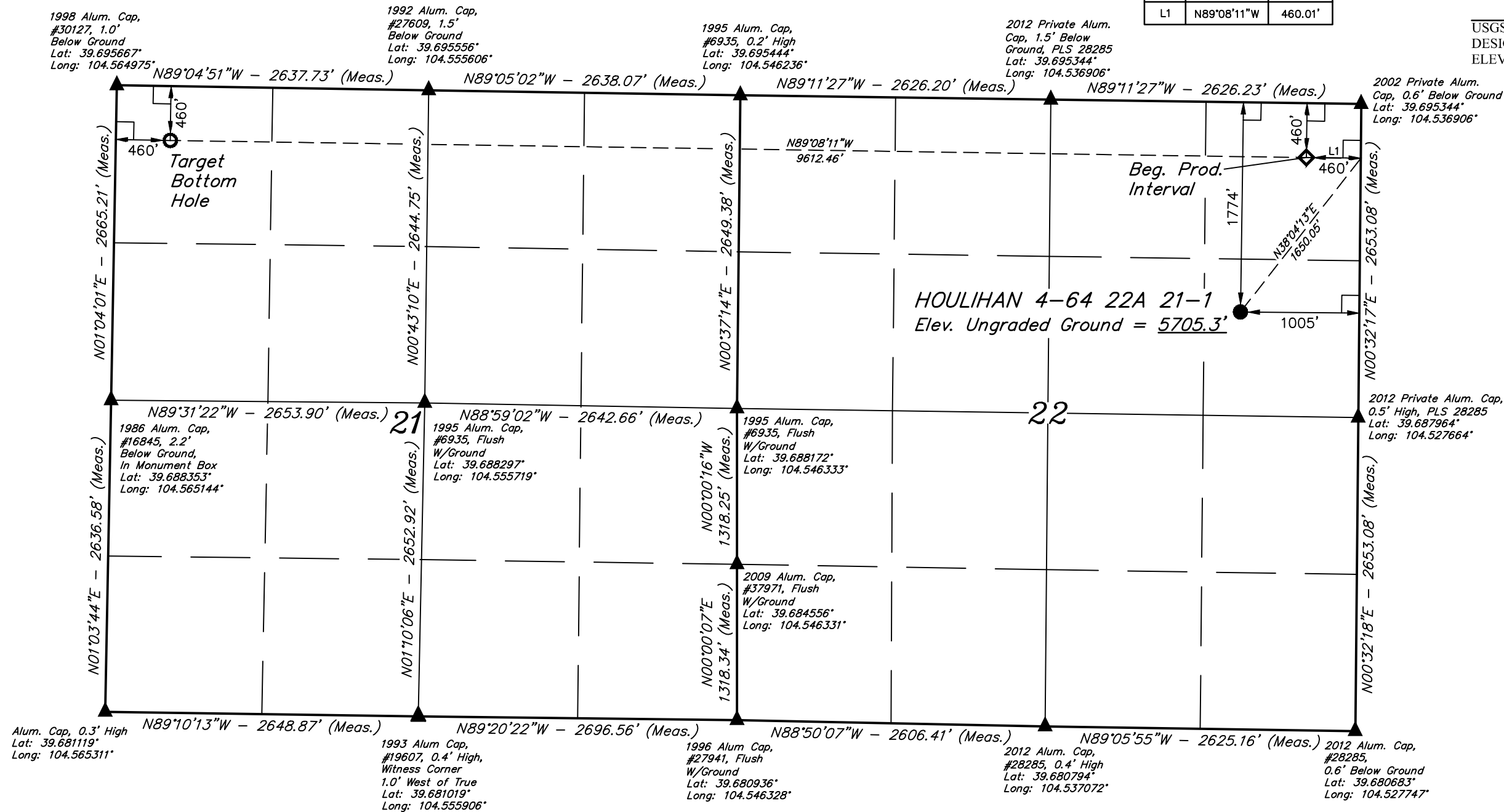
## **BASIS OF BEARINGS**

### BASIS OF BEARINGS IS A G.P.S. OBSERVATION

### **BASIS OF ELEVATION**

USGS COOPERATIVE BASE NETWORK CONTROL STATION,  
DESIGNATION "K 374". NGS DATA SHEET LISTS THE NAVD 88  
ELEVATION AS BEING 6054.61 FEET.

LINE TABLE		
LINE	DIRECTION	LENGTH
L1	N89°08'11"W	460.01'



**PDOP = 1.4**

CERTIFICATE

THIS IS TO CERTIFY THAT THE ABOVE STATEMENT WAS PREPARED FROM FIELD NOTES OF ACTUAL SURVEYS MADE BY ME OR UNDER MY SUPERVISION, AND THAT THE SAME ARE TRUE AND CORRECT TO THE BEST OF MY KNOWLEDGE AND BELIEF.

REGISTERED LAND SURVEYOR  
REGISTRATION NO. 28285  
STATE OF COLORADO

REV: 1 03-14-17 J.J. (SURFACE HOLE MOVE)

LEGEND:

|| = 90° SYMBOL

● = PROPOSED WELLHEAD.

 = PRODUCTION INTERVAL.

 = TARGET BOTTOM HOLE.

▲ = SECTION CORNERS LOCATED. (NAD 83)

SURFACE LOCATION 1774' FNL 1005' FEL	BEG. PROD. INTERVAL 460' FNL 460' FEL	TARGET BOTTOM HOLE 460' FNL 460' FWL
<b>NAD 83 (SURFACE LOCATION)</b>	<b>NAD 83 (BEG. PROD. INTERVAL)</b>	<b>NAD 83 (TARGET BOTTOM HOLE)</b>
LATITUDE = 39°41'25.50" (39.690417)	LATITUDE = 39°41'38.40" (39.694000)	LATITUDE = 39°41'39.79" (39.694386)
LONGITUDE = 104°31'52.34" (104.531206)	LONGITUDE = 104°31'45.21" (104.529225)	LONGITUDE = 104°33'48.14" (104.563372)
<b>NAD 27 (SURFACE LOCATION)</b>	<b>NAD 27 (BEG. PROD. INTERVAL)</b>	<b>NAD 27 (TARGET BOTTOM HOLE)</b>
LATITUDE = 39°41'25.55" (39.690431)	LATITUDE = 39°41'38.45" (39.694014)	LATITUDE = 39°41'39.84" (39.694400)
LONGITUDE = 104°31'50.46" (104.530683)	LONGITUDE = 104°31'43.34" (104.528706)	LONGITUDE = 104°33'46.26" (104.562850)
<b>STATE PLANE NAD 83 (CO. CENTRAL)</b>	<b>STATE PLANE NAD 83 (CO. CENTRAL)</b>	<b>STATE PLANE NAD 83 (CO. CENTRAL)</b>
N: 1677816.75 E: 3272634.08	N: 1679128.36 E: 3273177.05	N: 1679167.58 E: 3263567.48
<b>STATE PLANE NAD 27 (CO. CENTRAL)</b>	<b>STATE PLANE NAD 27 (CO. CENTRAL)</b>	<b>STATE PLANE NAD 27 (CO. CENTRAL)</b>
N: 677809.76 E: 2272787.55	N: 679121.35 E: 2273330.49	N: 679160.41 E: 2263721.00



**UELS, LLC**  
Corporate Office \* 85 South 200 East  
Vernal, UT 84078 \* (435) 789-1017

<b>SURVEYED BY</b>	NIGEL POLL, G.W.	02-13-17	<b>SCALE</b>
<b>DRAWN BY</b>	J.J.	02-16-17	1" = 1000'

## WELL LOCATION PLAT