

# **LEGEND:**

 **PROPOSED LOCATION**



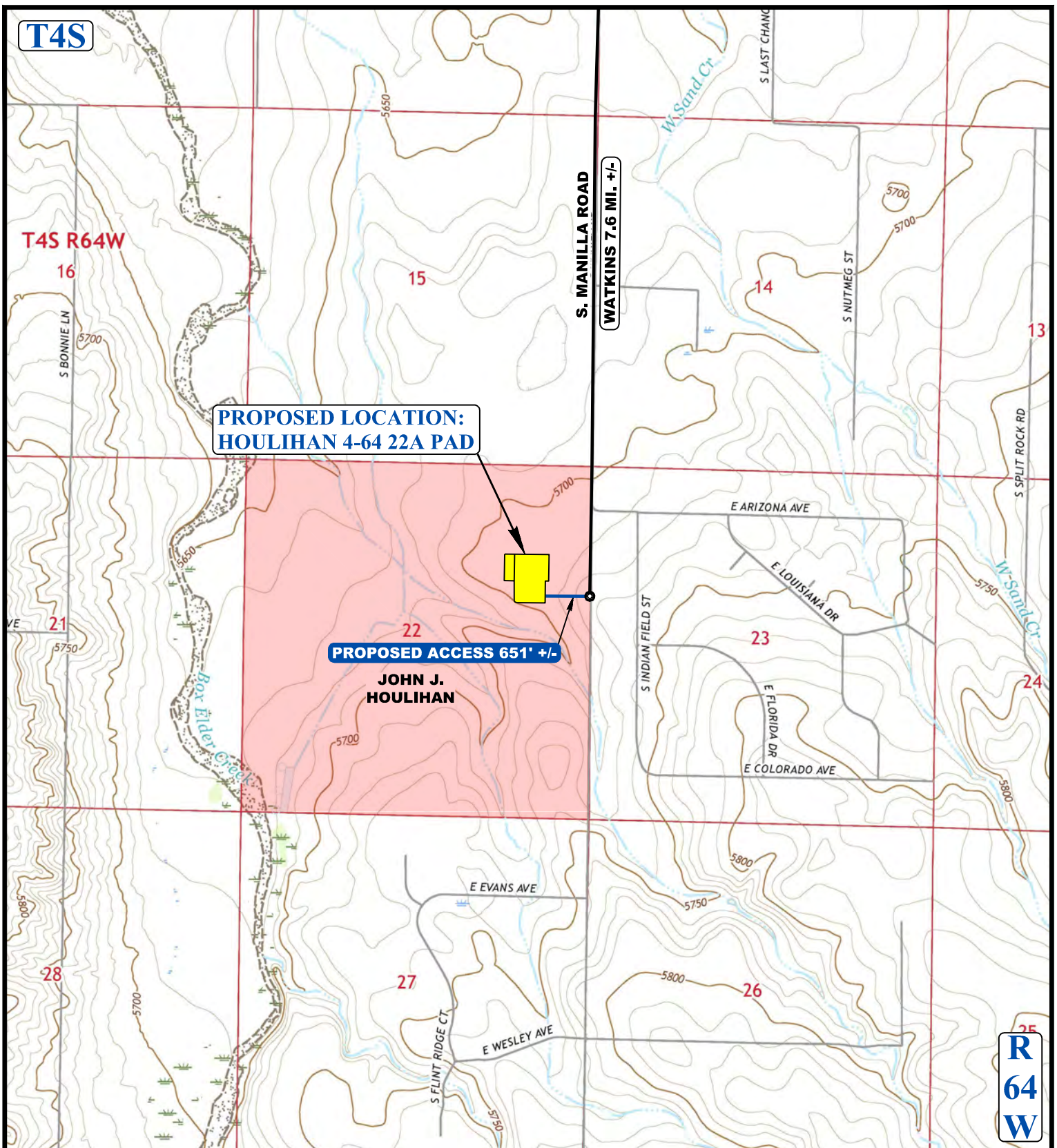
**UELS, LLC**  
Corporate Office \* 85 South 200 East  
Vernal, UT 84078 \* (435) 789-1017



## **BISON EXPLORATION**

**HOULIHAN 4-64 22A PAD**  
SE 1/4 NE 1/4, SECTION 22, T4S, R64W, 6th P.M.  
ARAPAHOE COUNTY, COLORADO

SURVEYED BY	G.W.	02-28-17	SCALE
DRAWN BY	J.J.	03-16-17	1 : 100,000
<b>ACCESS ROAD MAP</b>			<b>TOPO A</b>



NOTE: PARCEL DATA SHOWN HAS BEEN OBTAINED FROM VARIOUS SOURCES AND SHOULD BE USED FOR MAPPING, GRAPHIC AND PLANNING PURPOSES ONLY. NO WARRANTY IS MADE BY UINTAH ENGINEERING AND LAND SURVEYING (UELS) FOR ACCURACY OF THE PARCEL DATA.

#### LEGEND:

EXISTING ROAD  
PROPOSED ROAD



#### BISON EXPLORATION

**HOULIHAN 4-64 22A PAD**  
SE 1/4 NE 1/4, SECTION 22, T4S, R64W, 6th P.M.  
ARAPAHOE COUNTY, COLORADO

SURVEYED BY	G.W.	02-28-17	SCALE
DRAWN BY	J.J.	03-16-17	1 : 24,000
<b>ACCESS ROAD MAP</b>			<b>TOPO B</b>



**UELS, LLC**  
Corporate Office \* 85 South 200 East  
Vernal, UT 84078 \* (435) 789-1017