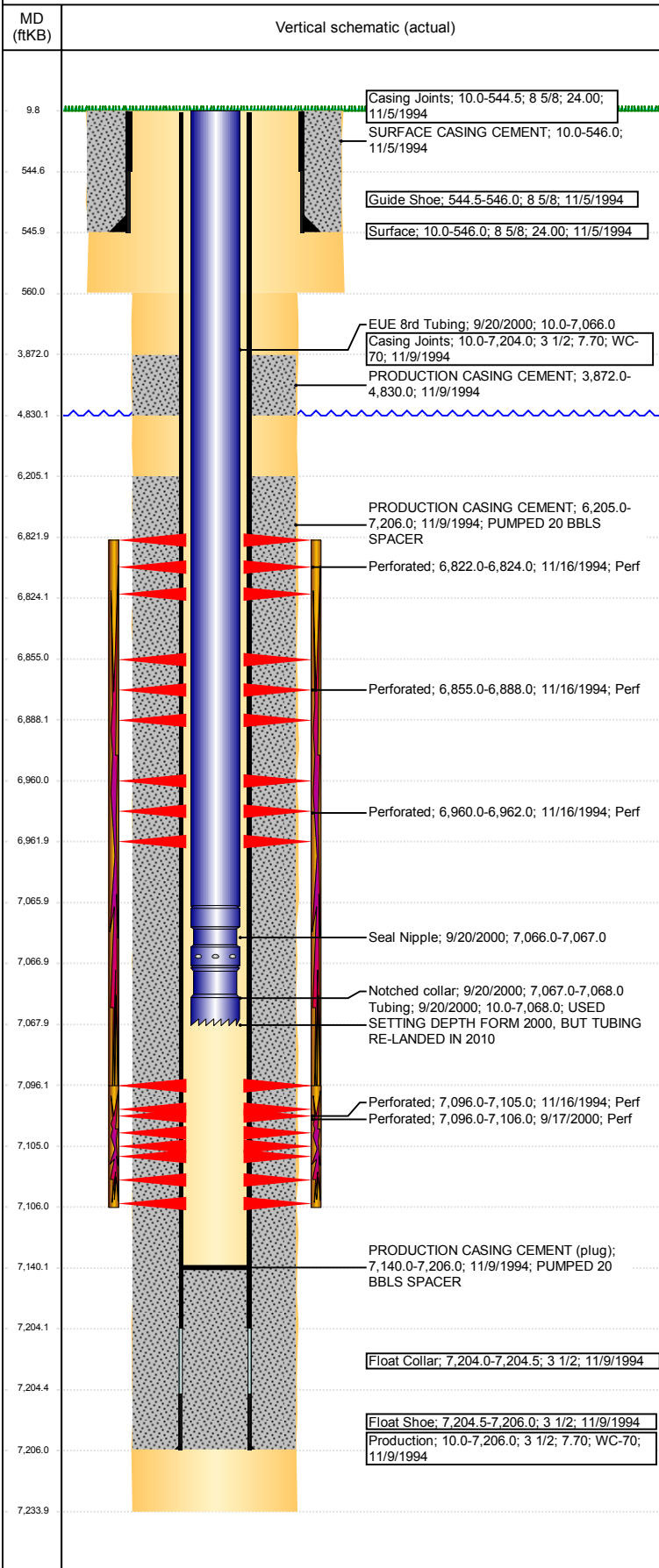


Well Name: SHELTON 41-2

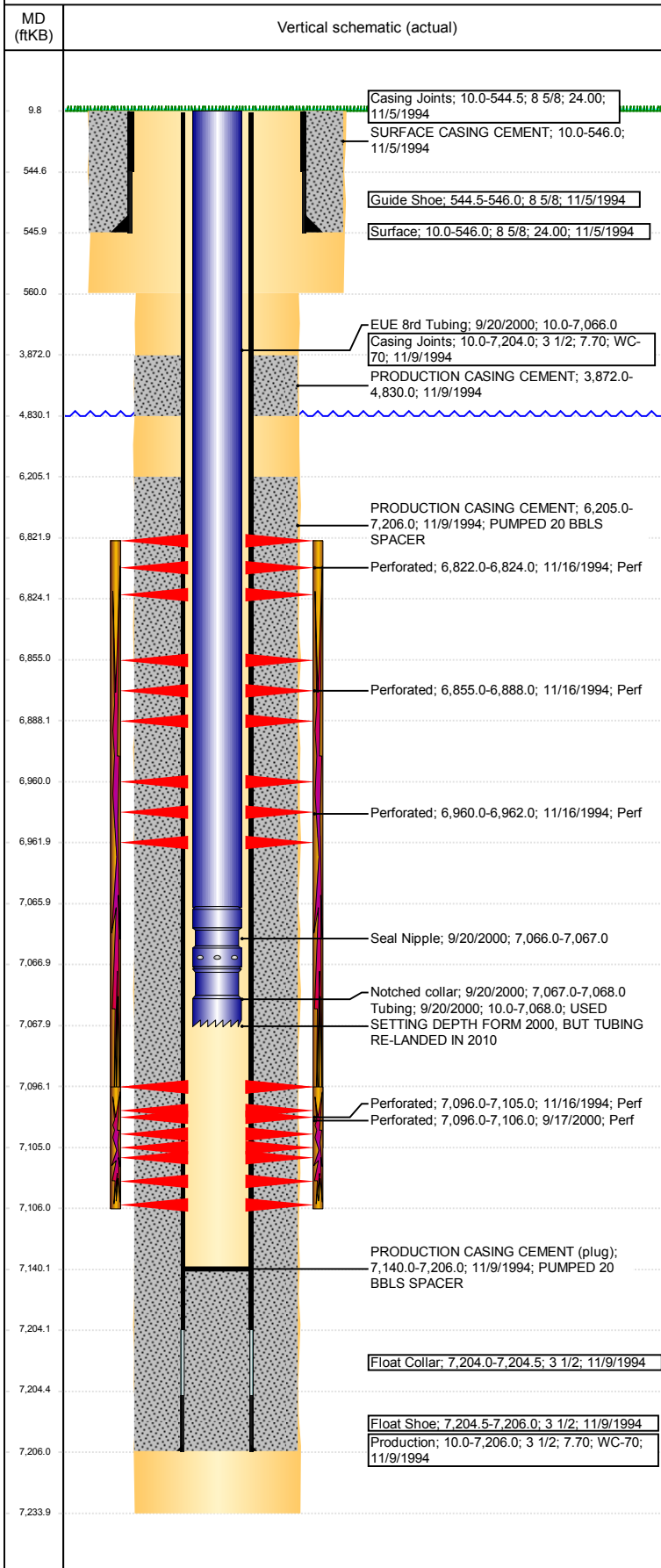
VERTICAL - ORIGINAL HOLE, 4/27/2017 10:25:20 AM



Well Header							
API	05-123-18528	Business Unit	DJ BASIN	District	15	Well Config	VERTICAL
Original KB Elevation (ft)	4,815	KB - GL / MSL (ftKB)	10.00	Spud Date	11/5/1994	P & A Date	
Comment							
WELL DATA LIMITED							
SURFACE CSG DISCREPANCY, ST RPT 535', DRL/CEMENT RPT HAS 546', STUCK WITH DRL RPT							
Directions To Well							
Congressional Location							
Quarter 3	Quarter 4	Section	Township	Twnshp N/S Dir	Range	Range E/W Dir	
NE	NE	2	3	N	65	W	
Bottom Hole Location							
North-South Distance (ft)		From N or S Line		East-West Distance (ft)		From E or W Line	
Plug Back Total Depths							
Date	Depth (ftKB)	Method		Com			
11/15/1994	7,140.0	CASED HOLE LOG		DEPTH LOGGER ON CBL			
Wellbore Sections							
Section Des		Size (in)	Act Top, MD (ftKB)		Act Btm, MD (ftKB)		
SURFACE		12 1/4	10		560		
PRODUCTION		7 7/8	560		7,234		
Zone Statuses							
Zone Name	Status Date	Status	Fluid Type	Job	Prod Method		
NIOBRARA	12/29/1994	PR		DRILLING/CO...			
NIOBRARA	3/11/2014	PR	Water		Flowing		
CODELL	12/29/1994	PR		DRILLING/CO...			
CODELL	9/20/2000	PR		RE-FRAC, 9/17...			
CODELL	3/11/2014	PR	Water		Flowing		
NIOBRARA-C...	3/11/2014	PR	Water		Flowing		
NIOBRARA-C...	11/15/2016	PR					
Casing Strings							
Surface, 546.0ftKB							
Casing Description	Run Date	OD (in)	Wt/Len (l...)	Grade	Top, MD (ft...)	MD (ftKB)	
Surface	11/5/1994	8 5/8	24.00		10.0	546.0	
Production, 7,206.0ftKB							
Casing Description	Run Date	OD (in)	Wt/Len (l...)	Grade	Top, MD (ft...)	MD (ftKB)	
Production	11/9/1994	3 1/2	7.70	WC-70	10.0	7,206.0	
Cement							
Description	SURFACE CASING CEMENT				Top Depth (ftKB)	Bottom Depth (ftKB)	
					10.0	546.0	
Description	PRODUCTION CASING CEMENT				Top Depth (ftKB)	Bottom Depth (ftKB)	
					3,872.0	4,830.0	
Description	PRODUCTION CASING CEMENT				Top Depth (ftKB)	Bottom Depth (ftKB)	
					6,205.0	7,206.0	
Tubing Strings							
Tubing Description	Run Date	String...	ID (in)	Wt (lb/ft)	Grade	Len (ft)	Set De...
Tubing	9/20/2000	2 3/8	2.00	4.70	J-55	7,058.00	00
Tubing Components							
Item Des	OD (in)	Wt (lb/ft)	Grade	Jts	Len (ft)	Btm (ftKB)	Btm (TVD) (ftKB)
EUE 8rd Tubing	2 3/8	4.70	J-55	217	7,056.00	7,066.0	
Seal Nipple	2 3/8			1	1.00	7,067.0	
Notched collar	2 3/8			1	1.00	7,068.0	
Other In Hole							
Run Date	Des			OD (in)	Top (ftKB)	Btm (ftKB)	
Logs							
Date	Type				Top, MD (ftKB)	Btm, MD (ftKB)	
11/9/1994	COMPENSATED DENSITY				4,200.0	7,200.0	
11/9/1994	INDUCTION				500.0	7,200.0	
11/15/1994	CEMENT BOND				3,800.0	7,134.0	

Well Name: SHELTON 41-2

VERTICAL - ORIGINAL HOLE, 4/27/2017 10:25:21 AM



Perforation Data					
Linked Zone	Bnch/St g	Sum of Entered Shot Total	Top (ftKB)	Btm (ftKB)	Date
NIOBRARA, ORIGINAL HOLE	A	2	6,822.00	6,824.00	11/16/1994
NIOBRARA, ORIGINAL HOLE	B	2	6,855.00	6,888.00	11/16/1994
NIOBRARA, ORIGINAL HOLE	C	2	6,960.00	6,962.00	11/16/1994
CODELL, ORIGINAL HOLE		40	7,096.00	7,106.00	9/17/2000
CODELL, ORIGINAL HOLE		9	7,096.00	7,105.00	11/16/1994
Total (Sum)		55			

Stimulation Intervals		
Start Date 11/18/1994	Primary Job Type DRILLING/COMPLETION - ORIGINAL	
Technical Result	Tech Result Details	Tech Result Note
Comment LIMITED ENTRY FRAC		
Start Date 9/18/2000	Primary Job Type RE-FRAC	
Technical Result	Tech Result Details	Tech Result Note
Comment		