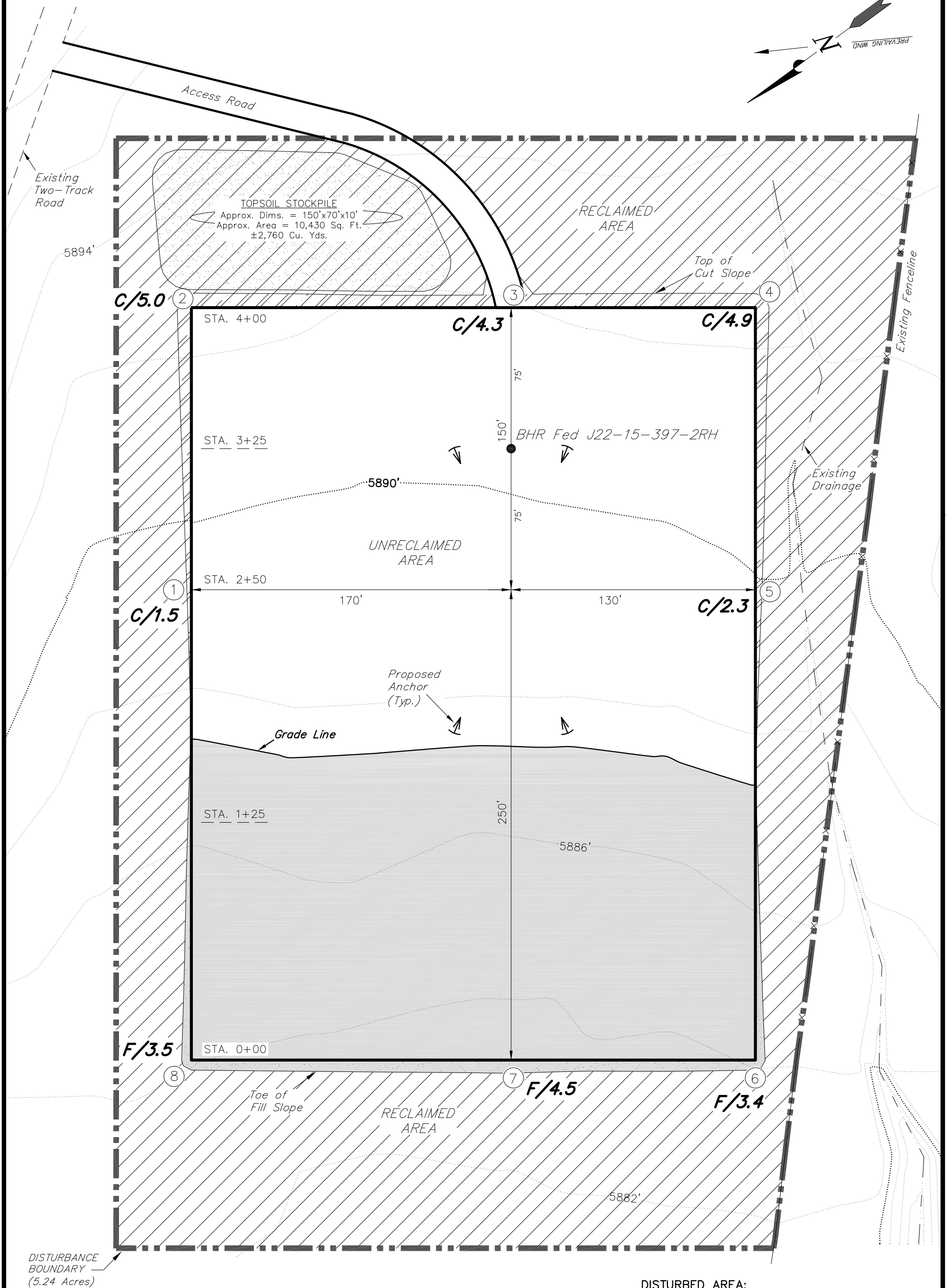
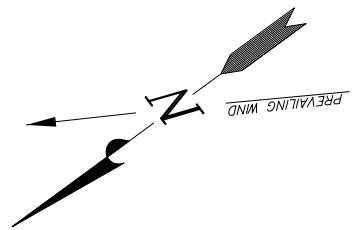


**AUGUSTUS ENERGY PARTNERS II, LLC**  
**INTERIM RECLAMATION PLAN**  
**BHR Fed J22-397 PAD**  
*Pad Location: NESE Section 22, T3N, R97W, 6th P.M.*



**DISTURBED AREA:**

TOTAL DISTURBED AREA = ±5.24 ACRES  
TOTAL RECLAIMED AREA = ±2.49 ACRES  
UNRECLAIMED AREA = ±2.75 ACRES

SURVEYED BY: K.G.S.	DATE SURVEYED: 10-02-14
DRAWN BY: M.W.	DATE DRAWN: 08-30-12
SCALE: 1" = 50'	REVISED: F.T.M. 01-24-17

**Tri State** (435) 781-2501  
**Land Surveying, Inc.**  
180 NORTH VERNAL AVE. VERNAL, UTAH 84078

**SHEET**  
**7**