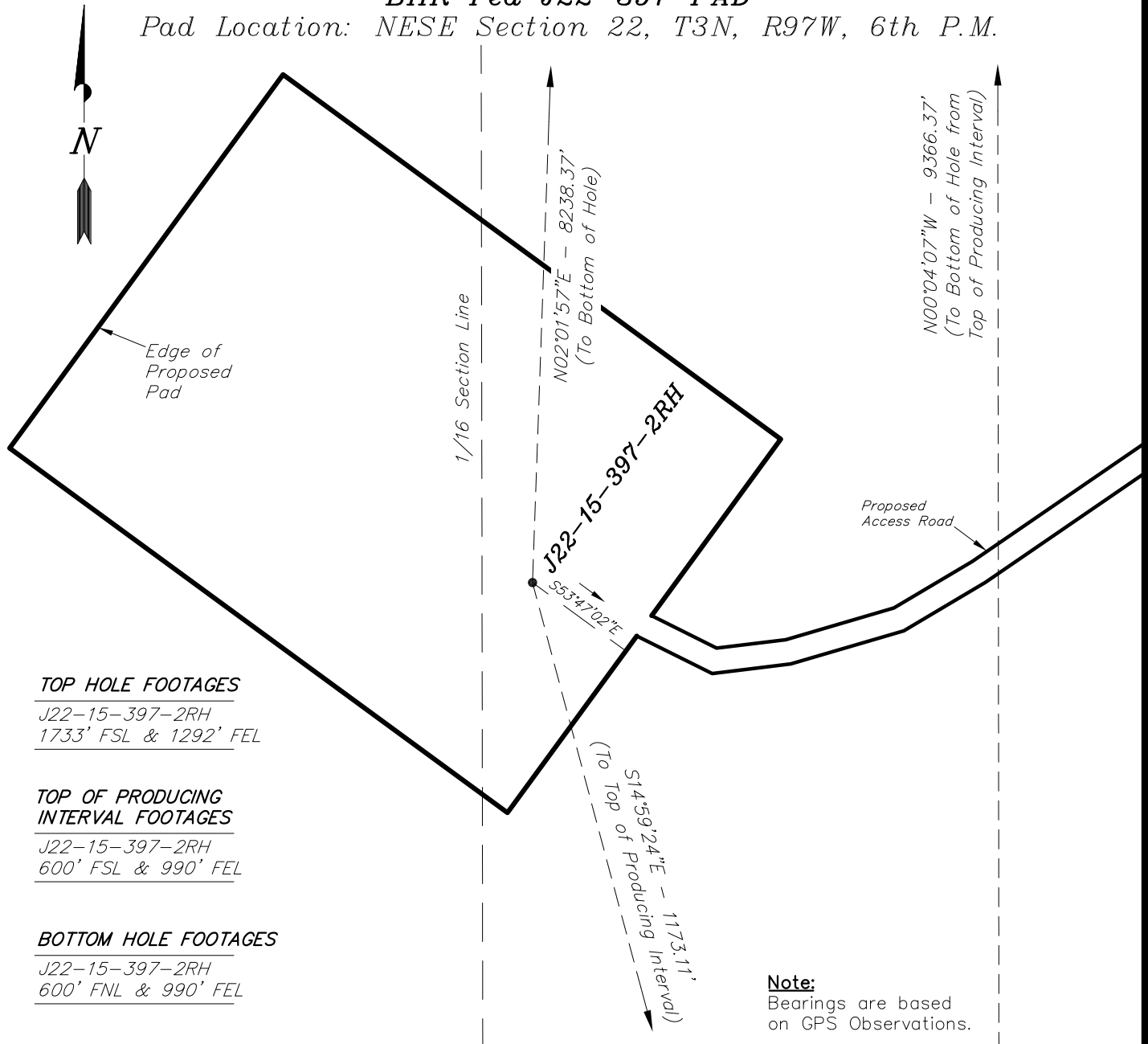


AUGUSTUS ENERGY PARTNERS II, LLC

WELL PAD INTERFERENCE PLAT

BHR Fed J22-397 PAD

Pad Location: NESE Section 22, T3N, R97W, 6th P.M.



TOP HOLE FOOTAGES

J22-15-397-2RH
1733' FSL & 1292' FEL

TOP OF PRODUCING INTERVAL FOOTAGES

J22-15-397-2RH
600' FSL & 990' FEL

BOTTOM HOLE FOOTAGES

J22-15-397-2RH
600' FNL & 990' FEL

Note:

Bearings are based on GPS Observations.

LATITUDE & LONGITUDE Surface position of Wells (NAD 83)

WELL	LATITUDE	LONGITUDE
J22-15-397-2RH	40° 12' 43.03"	108° 15' 34.60"

RELATIVE COORDINATES From Top Hole to Bottom Hole

WELL	NORTH	EAST
J22-15-397-2RH	8,233'	292'

LATITUDE & LONGITUDE Top of Producing Interval (NAD 83)

WELL	LATITUDE	LONGITUDE
J22-15-397-2RH	40° 12' 31.84"	108° 15' 30.69"

LATITUDE & LONGITUDE Bottom Hole Position (NAD 83)

WELL	LATITUDE	LONGITUDE
J22-15-397-2RH	40° 14' 04.37"	108° 15' 30.77"

SURVEYED BY: K.G.S. DATE SURVEYED: 10-02-14
DRAWN BY: M.W. DATE DRAWN: 11-22-14
SCALE: 1" = 100' REVISED: F.T.M. 01-24-17

Tri State
Land Surveying, Inc.

(435) 781-2501

180 NORTH VERNAL AVE. VERNAL, UTAH 84078

SHEET

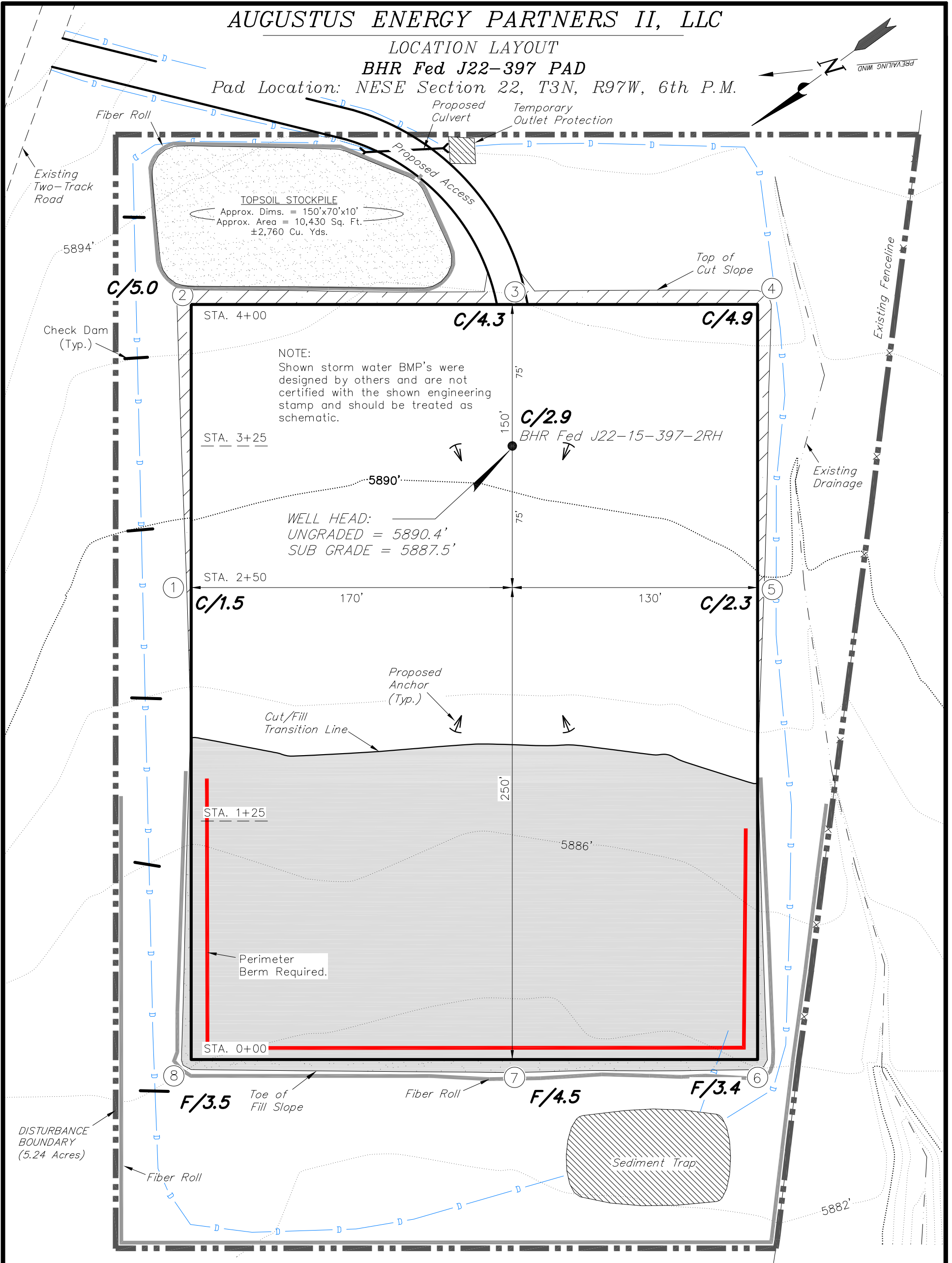
3

AUGUSTUS ENERGY PARTNERS II, LLC

LOCATION LAYOUT

BHR Fed J22-397 PAD

Pad Location: NESE Section 22, T3N, R97W, 6th P.M.



REFERENCE POINTS

300' SOUTHEASTERLY - 5882.2'
350' SOUTHEASTERLY - 5881.0'
220' NORTHEASTERLY - 5889.3'
270' NORTHEASTERLY - 5891.9'

NOTE:

The topsoil stockpile area is calculated as being a mound containing 2,760 cubic yards of dirt (a 10% fluff factor is included). The mound area is calculated with push slopes of 1.5:1 & fall slopes of 1.5:1.

SURVEYED BY: K.G.S.	DATE SURVEYED: 10-02-14
DRAWN BY: M.W.	DATE DRAWN: 08-30-12
SCALE: 1" = 50'	REVISED: F.T.M. 01-24-17

Tri State
Land Surveying, Inc.
180 NORTH VERNAL AVE. VERNAL, UTAH 84078
(435) 781-2501

SHEET
4

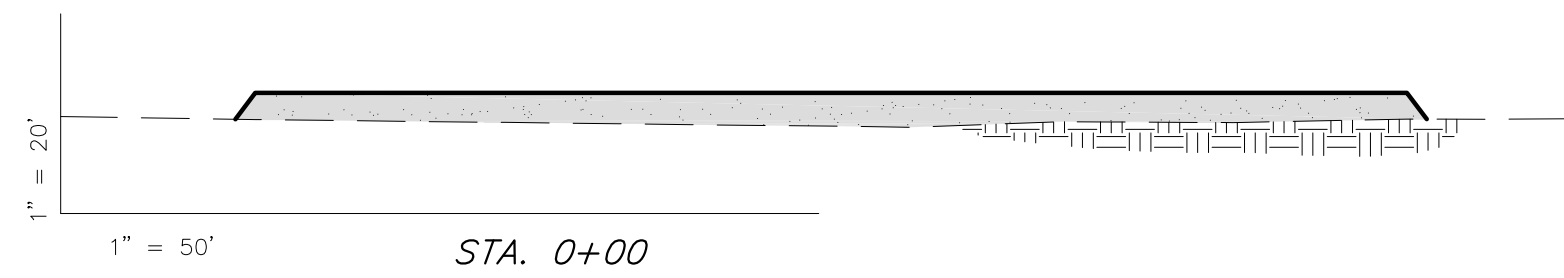
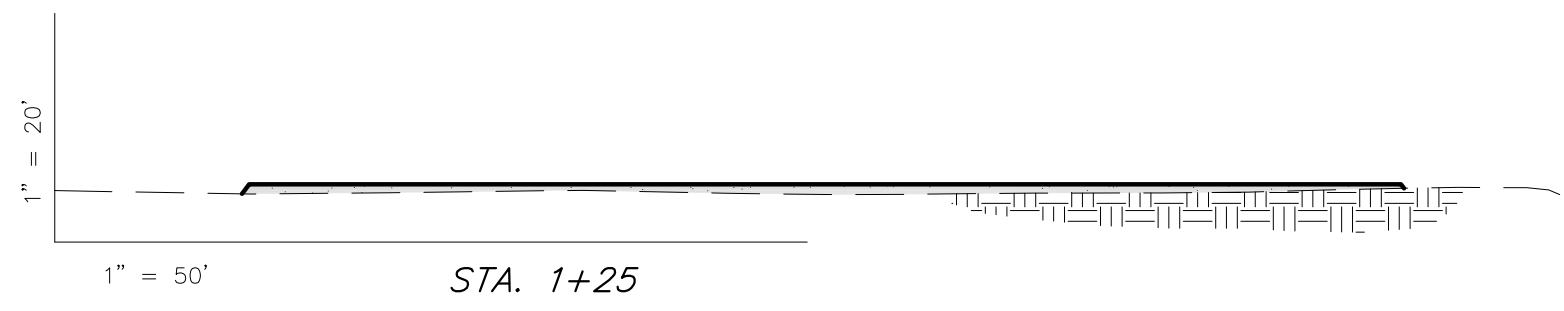
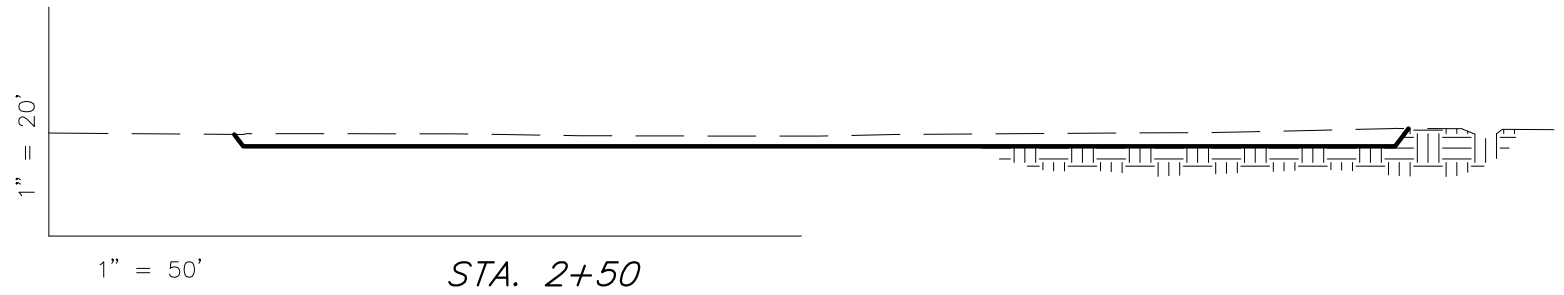
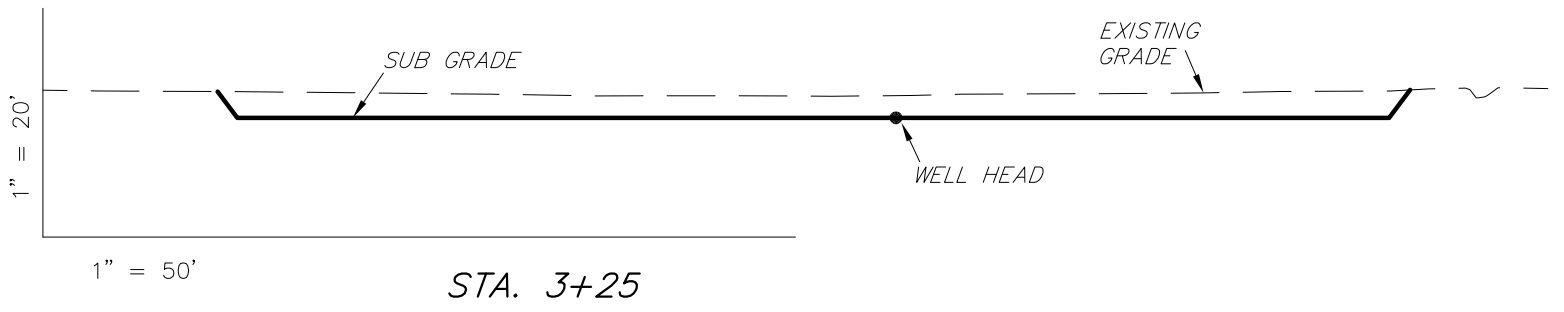
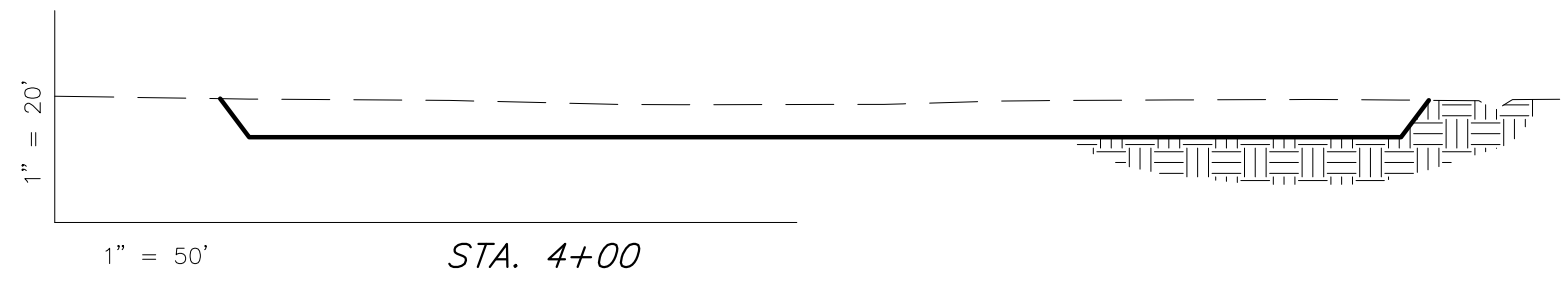


AUGUSTUS ENERGY PARTNERS II, LLC

CROSS SECTIONS

BHR Fed J22-397 PAD

Pad Location: NESE Section 22, T3N, R97W, 6th P.M.



NOTE:
UNLESS OTHERWISE
NOTED ALL CUT/FILL
SLOPES ARE AT 1.5:1



ESTIMATED EARTHWORK QUANTITIES (No Shrink or swell adjustments have been used) (Expressed in Cubic Yards)				
ITEM	CUT	FILL	6" TOPSOIL	EXCESS
PAD	4,950	4,950	Topsoil is not included in Pad Cut	0
PIT	N/A	N/A		N/A
TOTALS	4,950	4,950	2,510	0

SURVEYED BY:	K.G.S.	DATE SURVEYED:	10-02-14
DRAWN BY:	M.W.	DATE DRAWN:	08-30-12
SCALE:	1" = 50'	REVISED:	F.T.M. 01-24-17

Tri State
Land Surveying, Inc.
180 NORTH VERNAL AVE. VERNAL, UTAH 84078

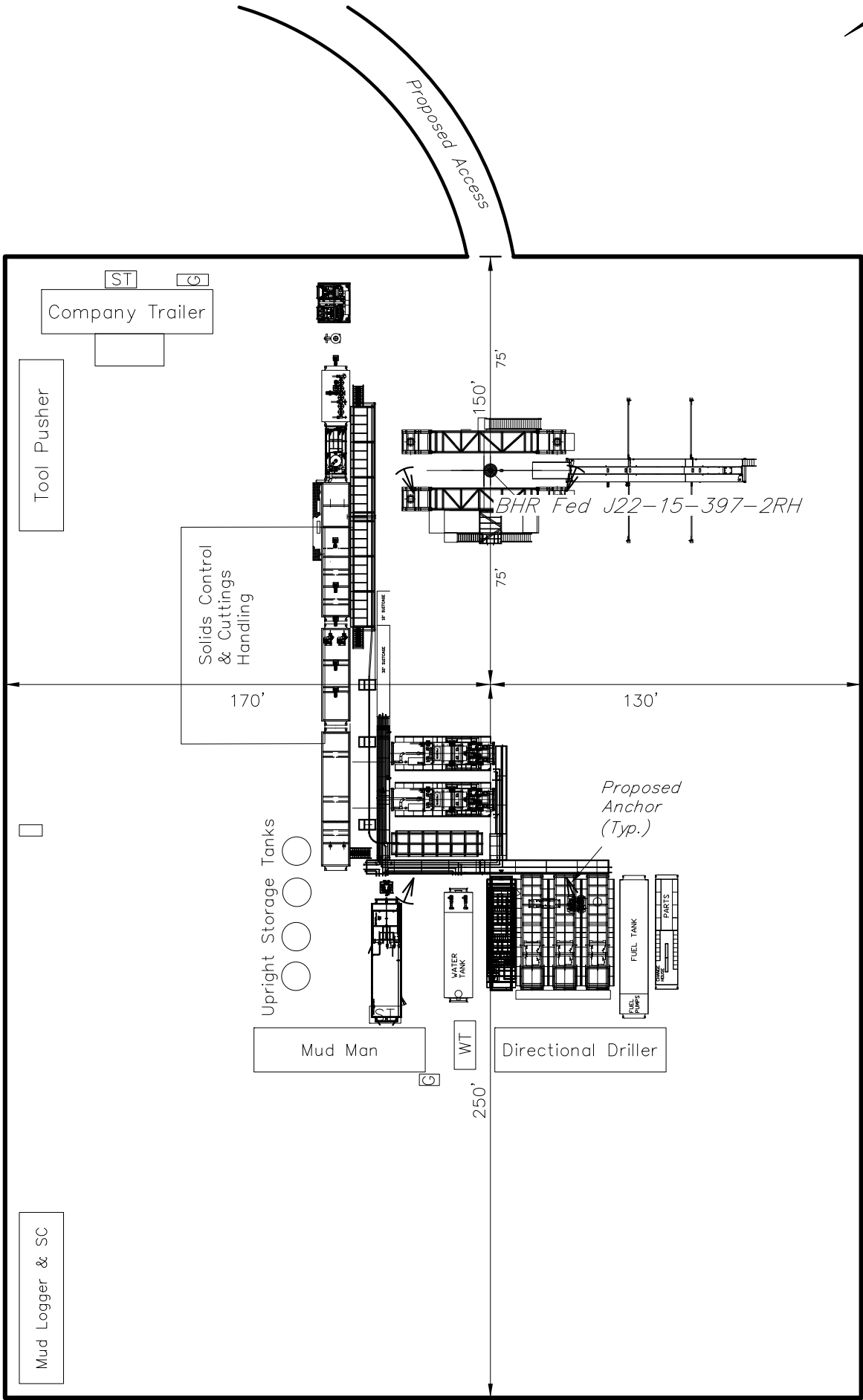
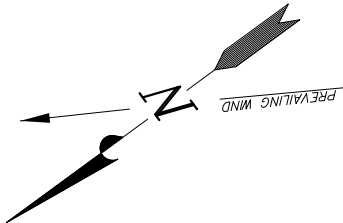
(435) 781-2501

AUGUSTUS ENERGY PARTNERS II, LLC

TYPICAL RIG LAYOUT

BHR Fed J22-397 PAD

Pad Location: NESE Section 22, T3N, R97W, 6th P.M.



SURVEYED BY: K.G.S.	DATE SURVEYED: 10-02-14
DRAWN BY: M.W.	DATE DRAWN: 08-30-12
SCALE: 1" = 50'	REVISED: F.T.M. 01-24-17

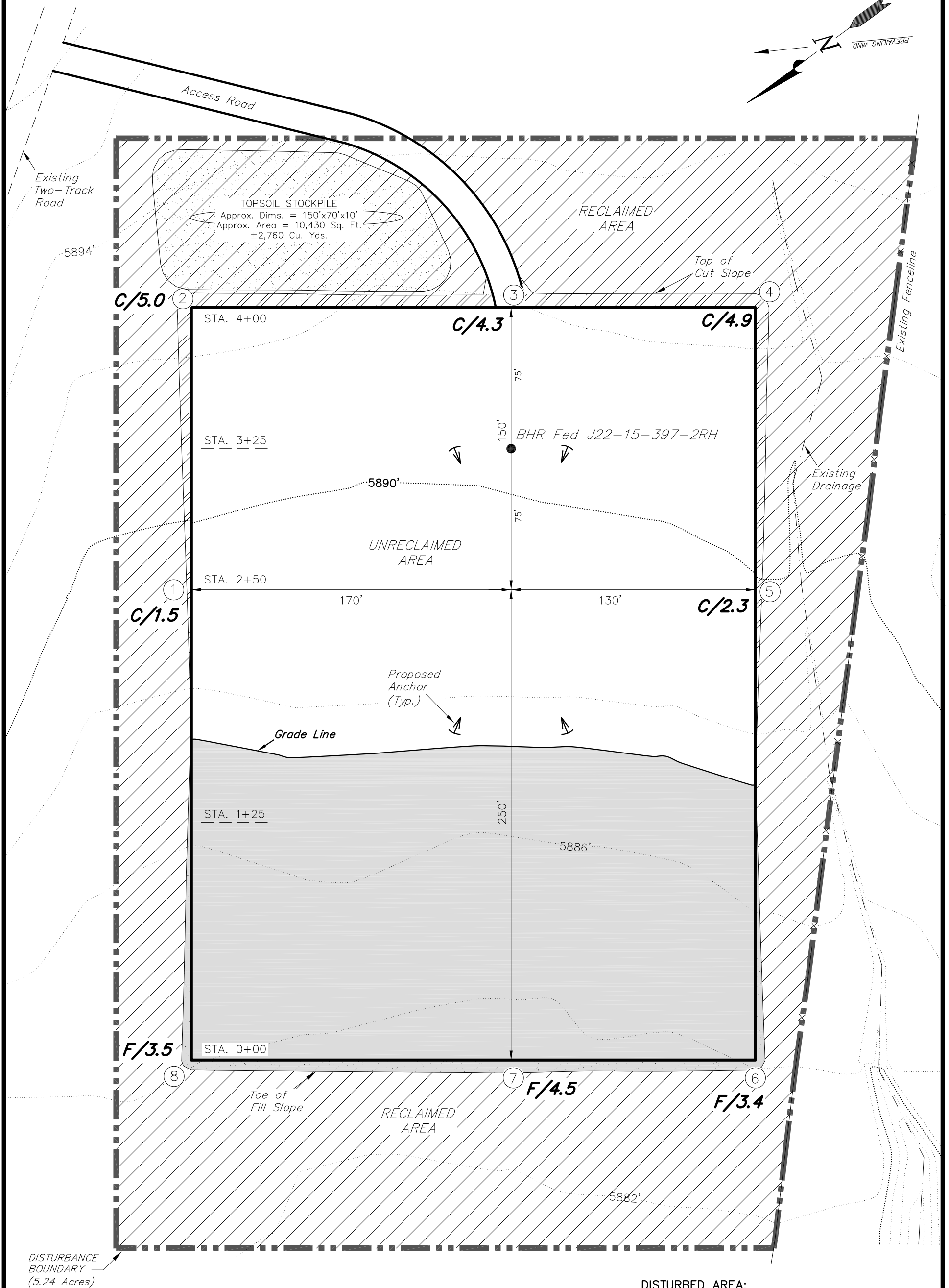
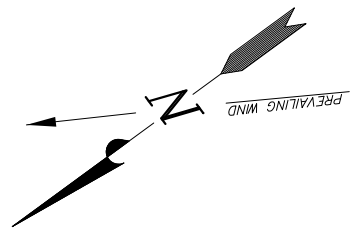
Tri State

Land Surveying, Inc.

180 NORTH VERNAL AVE. VERNAL, UTAH 84078

(435) 781-2501

AUGUSTUS ENERGY PARTNERS II, LLC
INTERIM RECLAMATION PLAN
BHR Fed J22-397 PAD
Pad Location: NESE Section 22, T3N, R97W, 6th P.M.



DISTURBED AREA:

TOTAL DISTURBED AREA = ±5.24 ACRES
TOTAL RECLAIMED AREA = ±2.49 ACRES
UNRECLAIMED AREA = ±2.75 ACRES

SURVEYED BY: K.G.S.	DATE SURVEYED: 10-02-14
DRAWN BY: M.W.	DATE DRAWN: 08-30-12
SCALE: 1" = 50'	REVISED: F.T.M. 01-24-17

Tri State (435) 781-2501
Land Surveying, Inc.
180 NORTH VERNAL AVE. VERNAL, UTAH 84078

SHEET
7