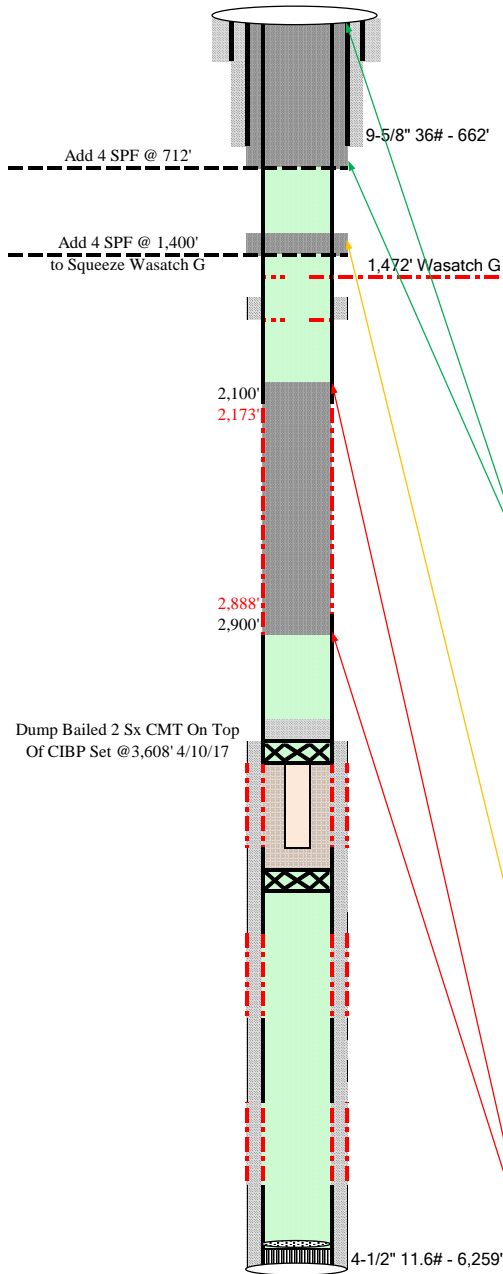


Exploration and Production

Proposed Wellbore



Well Name
Location
Field
County
API

GM 256-2
SE4 NW4 SEC 2 T7S-R96W
Grand Valley
Garfield, CO
05-045-07991

Tubulars

Casing	662'	9-5/8" 36# - 662'	
Cement	320 sx 14.5# 1.43 yield 6.9 gal	13-1/2" hole	
Casing	6,259'	4-1/2" 11.6# - 6,259'	0.08726 ft ³ /Lnft
Cement	205 sx 12.5# 1.75 yield 8.82 gal	7-7/8" hole	0.22779 ft ³ /Lnft
	680 sx 14.2# 1.33 yield 5.86 gal	4-1/2" Inside 9-5/8" CSG	0.33143 ft ³ /Lnft

Shallow Zones

Wasatch G Top	1,472'
Wasatch G Base	1,494'

TOC - Bond Log 1,682'

TOC - Bond Log 3,790'

P&A Calculations

	Shallow	Deep
Surface cement, plug from	0'	712'
62.12912 ft ³	between desired plug depths	
1.15 ft ³ /sk yield	15.8 lb/gal cmt	
54.03 sx for 712' plug inside 4.5" CSG		
100% excess		
54.03 sx		
219.40666 ft ³	0'	662'
1.15 ft ³ /sk yield	between desired plug depths	
190.79 sx for 662' plug in annulus of 4.5" CSG and 9.625" CSG	15.8 lb/gal cmt	
100% excess		
190.79 sx		
11.3895 ft ³	662'	712'
1.15 ft ³ /sk yield	between desired plug depths	
9.90 sx for 50' plug in annulus of 4.5" CSG and 7.875" hole	15.8 lb/gal cmt	
100% excess		
9.90 sx		
254.72 sx Total		
Wasatch G cement, plug from	1,300'	1,400'
8.726 ft ³	between desired plug depths	
1.15 ft ³ /sk yield	15.8 lb/gal cmt	
7.59 sx for 100' plug inside 4.5" CSG		
200% excess		
15.18 sx Total		
22.779 ft ³	1,300'	1,400'
1.15 ft ³ /sk yield	between desired plug depths	
19.81 sx for 100' plug in annulus of 4.5" CSG and 7.875" hole	15.8 lb/gal cmt	
200% excess		
39.62 sx		
54.79 sx Total		
Primary cement plug from	2,100'	2,900'
69.808 ft ³	between desired plug depths	
1.15 ft ³ /sk yield	15.8 lb/gal cmt	
60.70 sx for 800' plug inside 4.5" CSG		
110% excess		
66.77 sx Total		

Revision Date:
4/24/2017

Engineer:
Will Greathouse