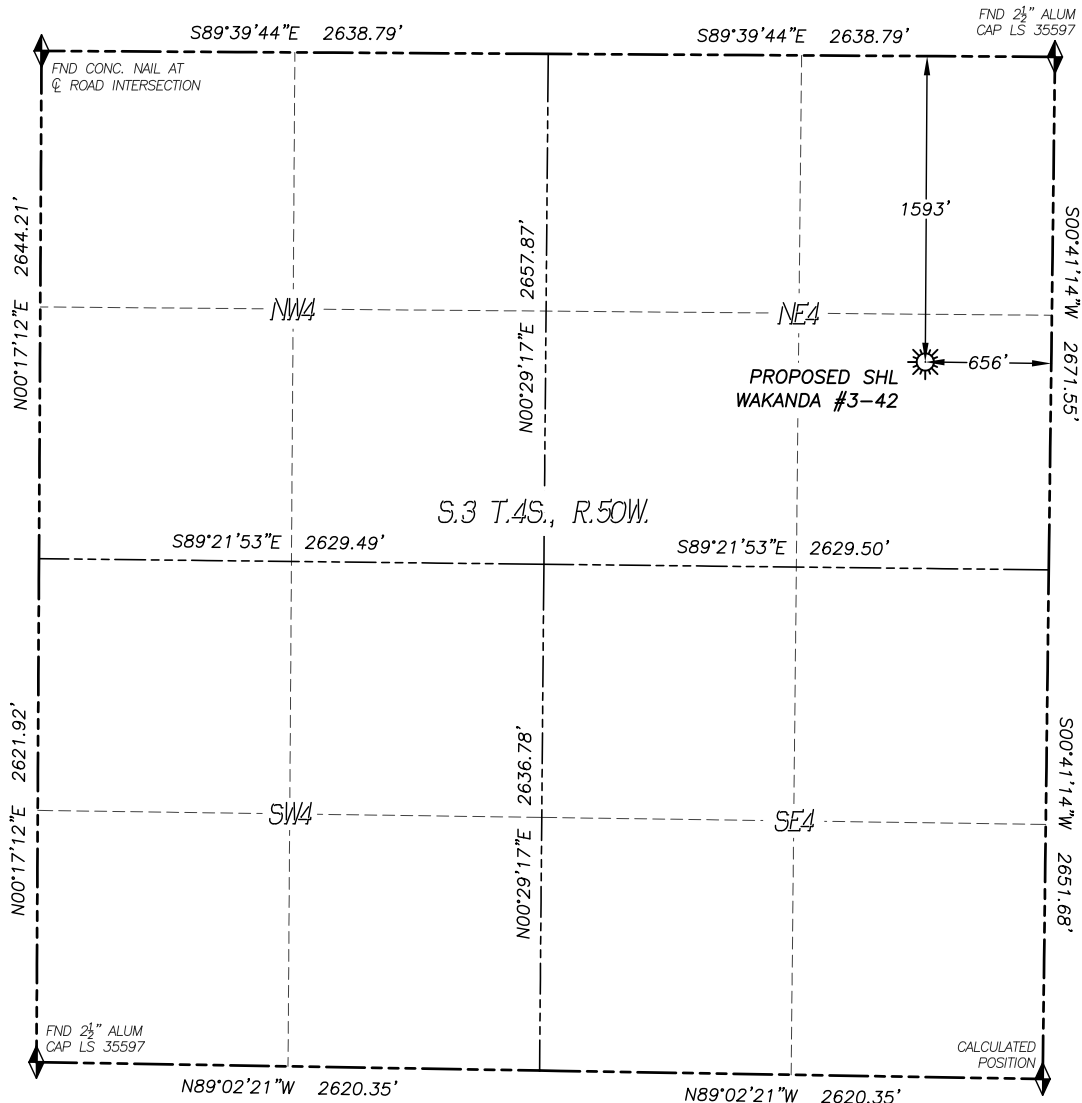


WELL LOCATION CERTIFICATE

WAKANDA #3-42

SECTION: 3
TOWNSHIP: 4S
RANGE: 50W



0 500 1000
SCALE: 1" = 1000'

LEGEND

- ◆ FOUND MONUMENT AS DESCRIBED
- ☀ PROPOSED WELL
- ⊙ EXISTING WELL
- BOTTOM HOLE
- ⊗ ABANDONED WELL
- ◆ CALCULATED POSITION

IN ACCORDANCE WITH A REQUEST FROM LARIO OIL & GAS COMPANY, DALEY LAND SURVEYING, INC. HAS DETERMINED THE SURFACE LOCATION OF THE WAKANDA #3-42 WELL TO BE 1593' FNL, 656' FEL, AS MEASURED AT NINETY (90) DEGREES FROM THE SECTION LINES OF SECTION 3, TOWNSHIP 4 SOUTH, RANGE 50 WEST, OF THE 6TH PRINCIPAL MERIDIAN, WASHINGTON COUNTY, COLORADO.

I HEREBY STATE THAT THIS WELL LOCATION CERTIFICATE WAS PREPARED BY ME OR UNDER MY DIRECT SUPERVISION, THAT THE WORK WAS COMPLETED ON 3/8/2017 FOR AND ON BEHALF OF LARIO OIL & GAS COMPANY, INC., AND THAT THIS MAP DOES NOT REPRESENT A BOUNDARY SURVEY, IT IS NOT A LAND SURVEY PLAT OR AN IMPROVEMENT SURVEY PLAT AND IT IS NOT TO BE RELIED UPON FOR THE ESTABLISHMENT OF FENCE, BUILDING OR OTHER FUTURE IMPROVEMENT LINES.

NOTES:

- 1) BEARINGS FOR THIS MAP ARE ASSUMED AND BASED UPON GPS OBSERVATIONS MADE BETWEEN MONUMENTS LOCATED AT THE NORTHWEST CORNER AND NORTHEAST CORNER OF SECTION 3, T.4S., R.50W.
- 2) HORIZONTAL DATUM IS NAD83.
- 3) VERTICAL DATUM IS NAVD88 AND ORIGINATES FROM THE LOCAL C.O.R.S. NETWORK, UTILIZING THE GEOID12A MODEL.
- 4) SEE LOCATION DRAWING FOR VISIBLE IMPROVEMENTS WITHIN 500' OF PROPOSED DISTURBED AREA.
- 5) SURFACE USE: PASTURE.
- 6) INST. OPERATOR: SCOTT ESTABROOKS.

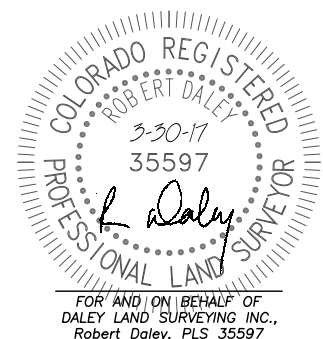
NEAREST CULTURAL ITEMS:

BUILDING:	3482'± NW
BUILDING UNIT:	3541'± NW
HIGH OCC. BLD. UNIT:	5280'±
DES. OUTSIDE ACTIVITY AREA:	5280'±
PUBLIC ROAD:	1578'± N
ABOVE GROUND UTILITY:	1559'± N
RAILROAD:	5280'±
PROPERTY LINE:	656'± E

NAD 83 LATITUDE AND LONGITUDE

SURFACE LOCATION:

LATITUDE:	N39.73818°
LONGITUDE:	W102.95600°
ELEV:	4542'
PDOP:	1.6
QTR/QTR:	SE4/NE4



SHEET 1 OF 1

Drawing Date: 3/30/17