



April 20, 2017

Mr. Matthew Lepore, Director
Colorado Oil & Gas Conservation Commission
1120 Lincoln Street, Ste. 801
Denver, Colorado 80203

RE: Rule 318.A.e.
Johnsons Corner East 2-C
Johnsons Corner East 3-N
Johnsons Corner East 4-N
Johnsons Corner East 5-C
Johnsons Corner East 6-N

Surface Location: SWNE, Section 35, Township 5N, Range 68W, Larimer County, CO

Dear Mr. Lepore,

Extraction Oil and Gas is planning to drill the captioned horizontal wells in accordance with the provision of COGCC Rule 318A.e.

The proposed wellbore spacing unit consists of:

Sec. 35-5N-68W: E/2NW/4 & NE/4
Sec. 36-5N-68W: N/2
Sec. 31-5N-67W: N/2

The spacing unit is an 880-acre wellbore spacing unit for the Niobrara and Codell formations.

Extraction Oil and Gas hereby certifies to the Director that all Owners within the proposed spacing unit above were notified and 30 days have passed without objection.

If you have any questions or issues regarding this permit, please contact Alyssa Andrews at (720) 481-2379.

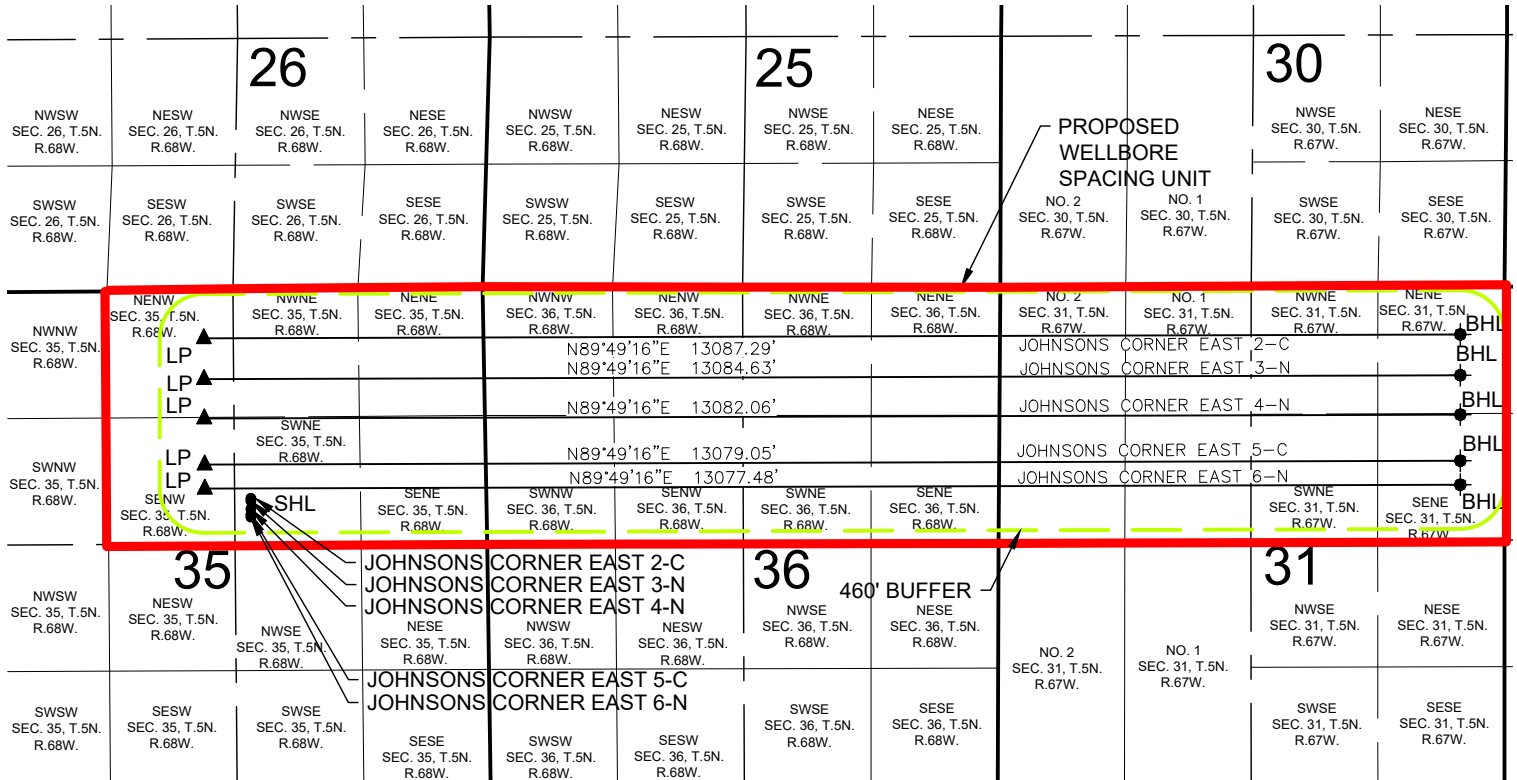
Sincerely,

Alyssa Andrews
Regulatory Analyst
Extraction Oil & Gas, LLC

JOHNSONS CORNER 35-F PAD PROPOSED 318A.a.(4)D. SPACING UNIT

T5N, R67W
SEC 31: N2

T5N, R68W
SEC 35: NE4, E2NW4
SEC 36: N2



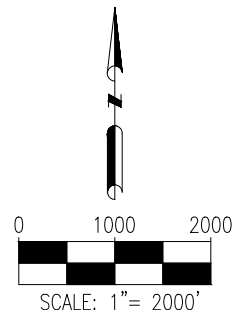
JOHNSONS CORNER EAST 2-C WELL TO BE LOCATED 2164' FNL AND 2452' FEL, SEC 35, T5N, R68W
JOHNSONS CORNER EAST 3-N WELL TO BE LOCATED 2192' FNL AND 2453' FEL, SEC 35, T5N, R68W
JOHNSONS CORNER EAST 4-N WELL TO BE LOCATED 2276' FNL AND 2455' FEL, SEC 35, T5N, R68W
JOHNSONS CORNER EAST 5-C WELL TO BE LOCATED 2332' FNL AND 2455' FEL, SEC 35, T5N, R68W
JOHNSONS CORNER EAST 6-N WELL TO BE LOCATED 2360' FNL AND 2456' FEL, SEC 35, T5N, R68W

LEGEND

● = PROPOSED WELL
● = BOTTOM HOLE
▲ = LANDING POINT

SHL = SURFACE HOLE LOCATION
BHL = BOTTOM HOLE LOCATION
LP = LANDING POINT

DISCLAIMER:
THIS PLOT DOES NOT REPRESENT A MONUMENTED LAND SURVEY AND SHOULD NOT BE
RELIED UPON TO DETERMINE BOUNDARY LINES, PROPERTY OWNERSHIP OR OTHER
PROPERTY INTERESTS. PARCEL LINES, IF DEPICTED HAVE NOT BEEN FIELD VERIFIED AND
MAY BE BASED UPON PUBLICLY AVAILABLE DATA THAT ALSO HAS NOT BEEN
INDEPENDENTLY VERIFIED.



PREPARED BY:



FIELD DATE:
07-28-14

DRAWING DATE:
03-15-17

BY:
IJM

CHECKED BY:
JLG

SITE NAME:

JOHNSONS CORNER 35-F PAD

SURFACE LOCATION:

SW 1/4 NE 1/4 SEC 35, T5N, R68W, 6TH P.M.

LARIMER COUNTY, COLORADO

PREPARED FOR:

