

EXTRACTION OIL & GAS

Weld County

Sec 35-T5N-R68W

JOHNSON CORNER EAST 2-C

ORIGINAL WELLBORE

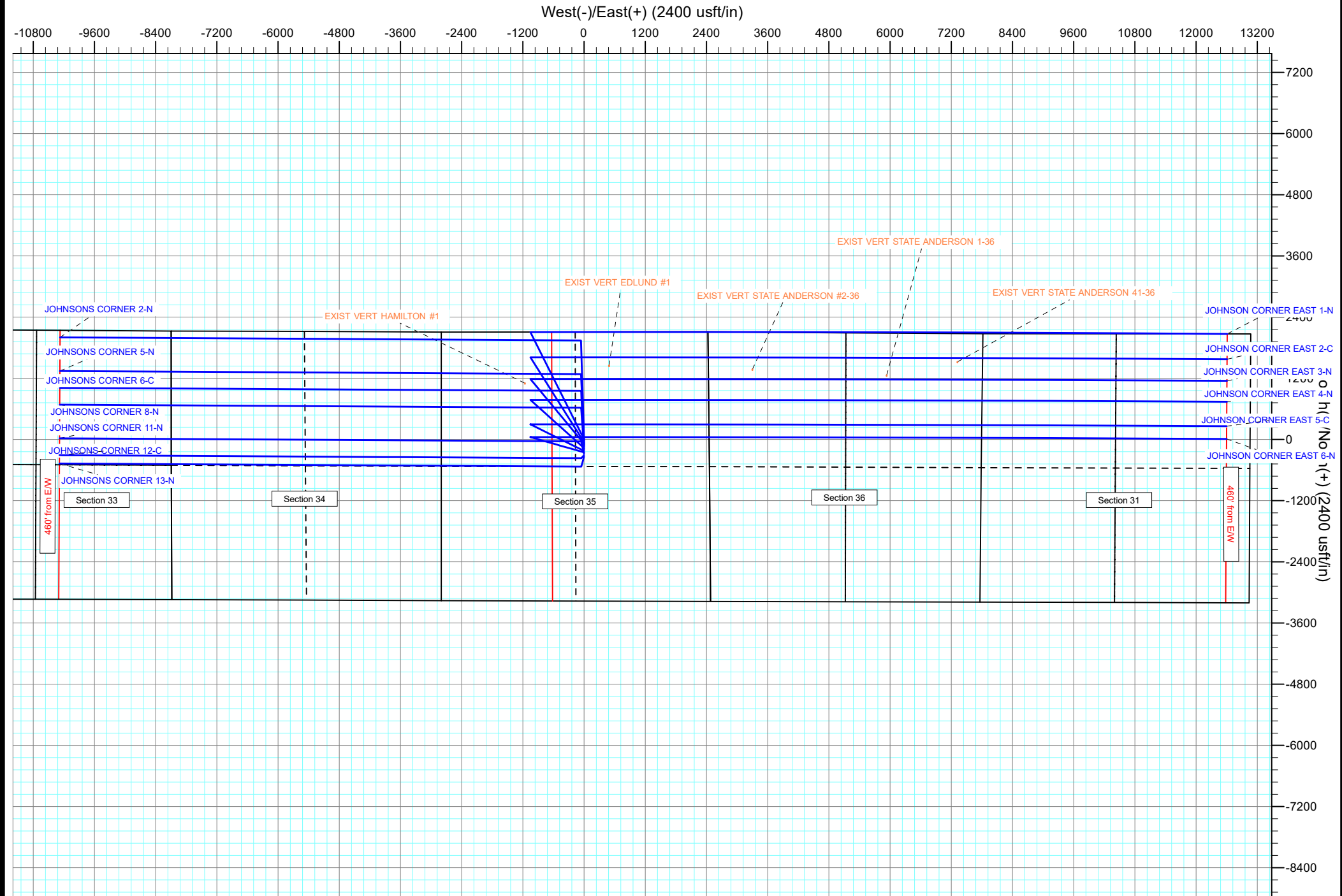
PROPOSAL 1

Anticollision Report

29 March, 2017



Project: Weld County
Site: Sec 35-T5N-R68W
Well: JOHNSON CORNER / EAST SPIDER
ORIGINAL WELLBORE
PROPOSAL 1



Anticollision Report

| | | | |
|---------------------------|-------------------------|-------------------------------------|------------------------------|
| Company: | EXTRACTION OIL & GAS | Local Co-ordinate Reference: | Well JOHNSON CORNER EAST 2-C |
| Project: | Weld County | TVD Reference: | KB 24' @ 5033.0usft |
| Reference Site: | Sec 35-T5N-R68W | MD Reference: | KB 24' @ 5033.0usft |
| Site Error: | 0.0 usft | North Reference: | True |
| Reference Well: | JOHNSON CORNER EAST 2-C | Survey Calculation Method: | Minimum Curvature |
| Well Error: | 0.0 usft | Output errors are at | 2.00 sigma |
| Reference Wellbore | ORIGINAL WELLBORE | Database: | EDT_32Bit_ODBC |
| Reference Design: | PROPOSAL 1 | Offset TVD Reference: | Offset Datum |

| | | | |
|-------------------------------------|---|-----------------------|---------------------|
| Reference | PROPOSAL 1 | | |
| Filter type: | NO GLOBAL FILTER: Using user defined selection & filtering criteria | | |
| Interpolation Method: | MD + Stations Interval 100.0usft | Error Model: | ISCWSA |
| Depth Range: | Unlimited | Scan Method: | Closest Approach 3D |
| Results Limited by: | Maximum center-center distance of 10,000.0 usft | Error Surface: | Pedal Curve |
| Warning Levels Evaluated at: | 2.00 Sigma | Casing Method: | Not applied |

| | | | | |
|----------------------------|------------------|--------------------------------|------------------|---------------------|
| Survey Tool Program | Date | 3/29/2017 | | |
| From (usft) | To (usft) | Survey (Wellbore) | Tool Name | Description |
| 0.0 | 20,971.7 | PROPOSAL 1 (ORIGINAL WELLBORE) | MWD OWSG | OWSG MWD - Standard |

| Summary | | | | | | |
|--|---------------------------------|------------------------------|---------------------------------|----------------------------------|-------------------|---------------------|
| Site Name | Reference Measured Depth (usft) | Offset Measured Depth (usft) | Distance Between Centres (usft) | Distance Between Ellipses (usft) | Separation Factor | Warning |
| Offset Well - Wellbore - Design | | | | | | |
| Sec 35-T5N-R68W | | | | | | |
| EXIST VERT EDLUND #1 - Wellbore #1 - Design #1 | 8,854.8 | 7,102.0 | 161.9 | 97.9 | 2.528 | CC, ES, SF |
| EXIST VERT HAMILTON #1 - Wellbore #1 - Design #1 | 5,458.5 | 5,064.7 | 362.9 | 227.3 | 2.677 | CC |
| EXIST VERT HAMILTON #1 - Wellbore #1 - Design #1 | 5,500.0 | 5,102.4 | 363.3 | 226.7 | 2.659 | ES |
| EXIST VERT HAMILTON #1 - Wellbore #1 - Design #1 | 5,600.0 | 5,206.6 | 367.6 | 228.3 | 2.639 | SF |
| JOHNSON CORNER EAST 1-N - ORIGINAL WELLBOR | 800.0 | 799.0 | 56.1 | 50.8 | 10.610 | CC |
| JOHNSON CORNER EAST 1-N - ORIGINAL WELLBOR | 20,971.7 | 21,006.1 | 513.4 | -196.3 | 0.723 | Level 1, ES, SF |
| JOHNSON CORNER EAST 3-N - ORIGINAL WELLBOR | 1,000.0 | 1,000.0 | 28.1 | 21.3 | 4.171 | CC |
| JOHNSON CORNER EAST 3-N - ORIGINAL WELLBOR | 20,971.7 | 20,719.0 | 446.7 | -249.8 | 0.641 | Level 1, ES, SF |
| JOHNSON CORNER EAST 4-N - ORIGINAL WELLBOR | 1,000.0 | 1,000.0 | 112.2 | 105.5 | 16.685 | CC, ES |
| JOHNSON CORNER EAST 4-N - ORIGINAL WELLBOR | 20,971.7 | 20,642.5 | 846.1 | 125.5 | 1.174 | Level 2, SF |
| JOHNSON CORNER EAST 5-C - ORIGINAL WELLBOR | 1,000.0 | 1,000.0 | 168.3 | 161.6 | 25.027 | CC, ES |
| JOHNSON CORNER EAST 5-C - ORIGINAL WELLBOR | 20,971.7 | 20,709.9 | 1,315.1 | 584.8 | 1.801 | SF |
| JOHNSON CORNER EAST 6-N - ORIGINAL WELLBOR | 1,000.0 | 1,000.0 | 196.0 | 189.3 | 29.144 | CC, ES |
| JOHNSON CORNER EAST 6-N - ORIGINAL WELLBOR | 20,971.7 | 20,559.1 | 1,571.0 | 843.7 | 2.160 | SF |
| JOHNSONS CORNER 11-N - ORIGINAL WELLBORE - | 1,000.0 | 1,000.0 | 224.1 | 217.3 | 33.317 | CC, ES |
| JOHNSONS CORNER 11-N - ORIGINAL WELLBORE - | 7,200.0 | 7,757.2 | 1,658.2 | 1,590.1 | 24.359 | SF |
| JOHNSONS CORNER 12-C - ORIGINAL WELLBORE - | 1,000.0 | 1,000.0 | 252.1 | 245.4 | 37.488 | CC, ES |
| JOHNSONS CORNER 12-C - ORIGINAL WELLBORE - | 9,100.0 | 6,825.5 | 2,175.6 | 2,100.8 | 29.074 | SF |
| JOHNSONS CORNER 13-N - ORIGINAL WELLBORE - | 903.3 | 903.3 | 280.1 | 274.1 | 46.444 | CC |
| JOHNSONS CORNER 13-N - ORIGINAL WELLBORE - | 1,000.0 | 995.7 | 280.5 | 273.8 | 41.865 | ES |
| JOHNSONS CORNER 13-N - ORIGINAL WELLBORE - | 9,200.0 | 6,725.9 | 2,387.3 | 2,312.0 | 31.664 | SF |
| JOHNSONS CORNER 2-N - ORIGINAL WELLBORE - P | 1,219.0 | 1,216.4 | 25.8 | 17.6 | 3.123 | CC |
| JOHNSONS CORNER 2-N - ORIGINAL WELLBORE - P | 1,300.0 | 1,296.6 | 26.4 | 17.5 | 2.982 | ES, SF |
| JOHNSONS CORNER 5-N - ORIGINAL WELLBORE - P | 1,000.0 | 1,000.0 | 56.1 | 49.4 | 8.344 | CC, ES |
| JOHNSONS CORNER 5-N - ORIGINAL WELLBORE - P | 7,400.0 | 7,847.5 | 328.1 | 260.0 | 4.817 | SF |
| JOHNSONS CORNER 6-C - ORIGINAL WELLBORE - P | 1,000.0 | 1,000.0 | 84.2 | 80.8 | 25.028 | CC, ES |
| JOHNSONS CORNER 6-C - ORIGINAL WELLBORE - P | 8,300.0 | 7,175.0 | 697.5 | 659.2 | 18.205 | SF |
| JOHNSONS CORNER 8-N - ORIGINAL WELLBORE - P | 1,000.0 | 1,000.0 | 140.3 | 133.5 | 20.857 | CC, ES |
| JOHNSONS CORNER 8-N - ORIGINAL WELLBORE - P | 7,300.0 | 7,775.6 | 992.4 | 924.5 | 14.605 | SF |
| SEC. 31 T5N R67W 6th P.M. | | | | | | |
| EXIST VERT EDLUND #1 - Wellbore #1 - Design #1 | 8,854.8 | 7,102.0 | 161.9 | -28.1 | 0.852 | Level 1, CC, ES, SF |
| EXIST VERT STATE ANDERSON #2-36 - Wellbore #1 - | 11,664.3 | 7,088.0 | 234.2 | -23.6 | 0.909 | Level 1, CC, ES, SF |
| EXIST VERT STATE ANDERSON 1-36 - Wellbore #1 - D | 14,296.4 | 7,036.0 | 343.8 | 16.9 | 1.052 | Level 2, CC |
| EXIST VERT STATE ANDERSON 1-36 - Wellbore #1 - D | 14,300.0 | 7,036.0 | 343.8 | 16.9 | 1.052 | Level 2, ES, SF |
| EXIST VERT STATE ANDERSON 41-36 - Wellbore #1 - | 15,684.5 | 7,029.0 | 75.8 | -288.2 | 0.208 | Level 1, CC, ES, SF |

CC - Min centre to center distance or convergent point, SF - min separation factor, ES - min ellipse separation