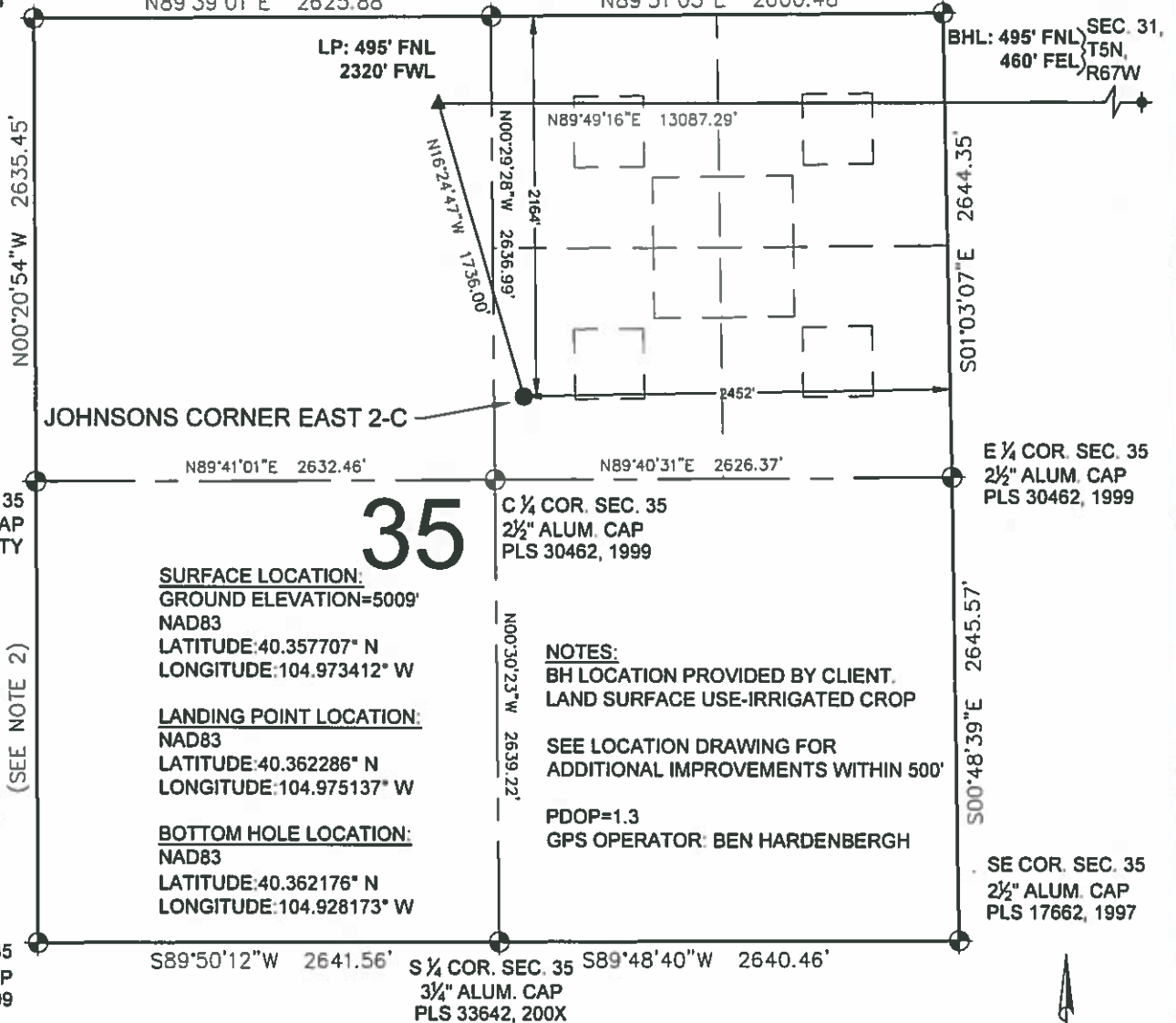


JOHNSONS CORNER EAST 2-C WELL LOCATION CERTIFICATE

NW COR. SEC. 35
2 1/2" ALUM. CAP
PLS 38065, 2014

N 1/4 COR. SEC. 35
3 3/4" BRASS CAP
PLS 16415, 1994

NE COR. SEC. 35
3 3/4" ALUM. CAP
PLS 17662, 1990



35

SURFACE LOCATION:
GROUND ELEVATION=5009'
NAD83
LATITUDE:40.357707° N
LONGITUDE:104.973412° W

LANDING POINT LOCATION:
NAD83
LATITUDE:40.362286° N
LONGITUDE:104.975137° W

BOTTOM HOLE LOCATION:
NAD83
LATITUDE:40.362176° N
LONGITUDE:104.928173° W

NOTES:
BH LOCATION PROVIDED BY CLIENT.
LAND SURFACE USE-IRRIGATED CROP

SEE LOCATION DRAWING FOR
ADDITIONAL IMPROVEMENTS WITHIN 500'

PDOP=1.3
GPS OPERATOR: BEN HARDENBERGH

LEGEND

- = EXISTING MONUMENT
- = CALCULATED POSITION
- = PROPOSED WELL
- ◆ = EXISTING WELL
- ▲ = BOTTOM HOLE
- △ = LANDING POINT
- LP = LANDING POINT
- BHL = BOTTOM HOLE LOCATION

**WELL JOHNSONS CORNER EAST 2-C TO
BE LOCATED 2164' FNL & 2452' FEL**

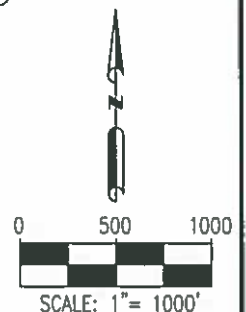
NOTES:

- THIS FIELD SURVEY CONFORMS TO THE MINIMUM STANDARDS SET BY THE C.O.G.C.C., RULE NO. 215
- BEARINGS AND DISTANCE SHOWN HEREON ARE GRID AND BASED ON THE COLORADO STATE PLANE COORDINATE SYSTEM, NAD 83/2011 BETWEEN MONUMENTS AS LABELED HEREON AND ELEVATIONS SHOWN ARE NAVD 88, AS DERIVED BY GPS OBSERVATIONS.
- GRID DISTANCES ARE SHOWN, AS MEASURED IN THE FIELD, WITH TIES TO WELLS MEASURED PERPENDICULAR TO SECTION LINES.

NOTICE: ACCORDING TO COLORADO LAW YOU MUST COMMENCE ANY LEGAL ACTION BASED UPON ANY DEFECT IN THIS SURVEY WITHIN THREE YEARS AFTER YOU FIRST DISCOVER SUCH DEFECT. IN NO EVENT MAY ANY ACTION BASED UPON ANY DEFECT IN THIS SURVEY BE COMMENCED MORE THAN TEN YEARS FROM THIS SAID DATE OF THIS CERTIFICATION SHOWN HEREON.

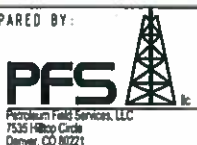
I, MICHAEL L. POOL, A LICENSED PROFESSIONAL LAND SURVEYOR IN THE STATE OF COLORADO DO HEREBY CERTIFY TO **EXTRACTION OIL & GAS** THAT THE SURVEY AND WELL LOCATION CERTIFICATE SHOWN HEREON WERE DONE BY ME OR UNDER MY DIRECT SUPERVISION AND THAT THE DRAWING SHOWN HEREON ACCURATELY DEPICTS THE PROPOSED LOCATION OF THE WELL. THIS CERTIFICATE DOES NOT REPRESENT A LAND SURVEY PLAT OR IMPROVEMENT SURVEY PLAT AS DEFINED BY C.R.S. 38-51-102 AND CANNOT BE RELIED UPON TO DETERMINE OWNERSHIP.

MICHAEL L. POOL, PLS 38304
COLORADO LICENSED PROFESSIONAL LAND SURVEYOR
FOR AND ON BEHALF OF P.F.S., LLC



SHEET 1 OF 3

PREPARED BY:



FIELD DATE:

07-28-14

DRAWING DATE:

02-28-17

BY:

JJM

CHECKED BY:

JLG

WELL NAME:

JOHNSONS CORNER EAST 2-C

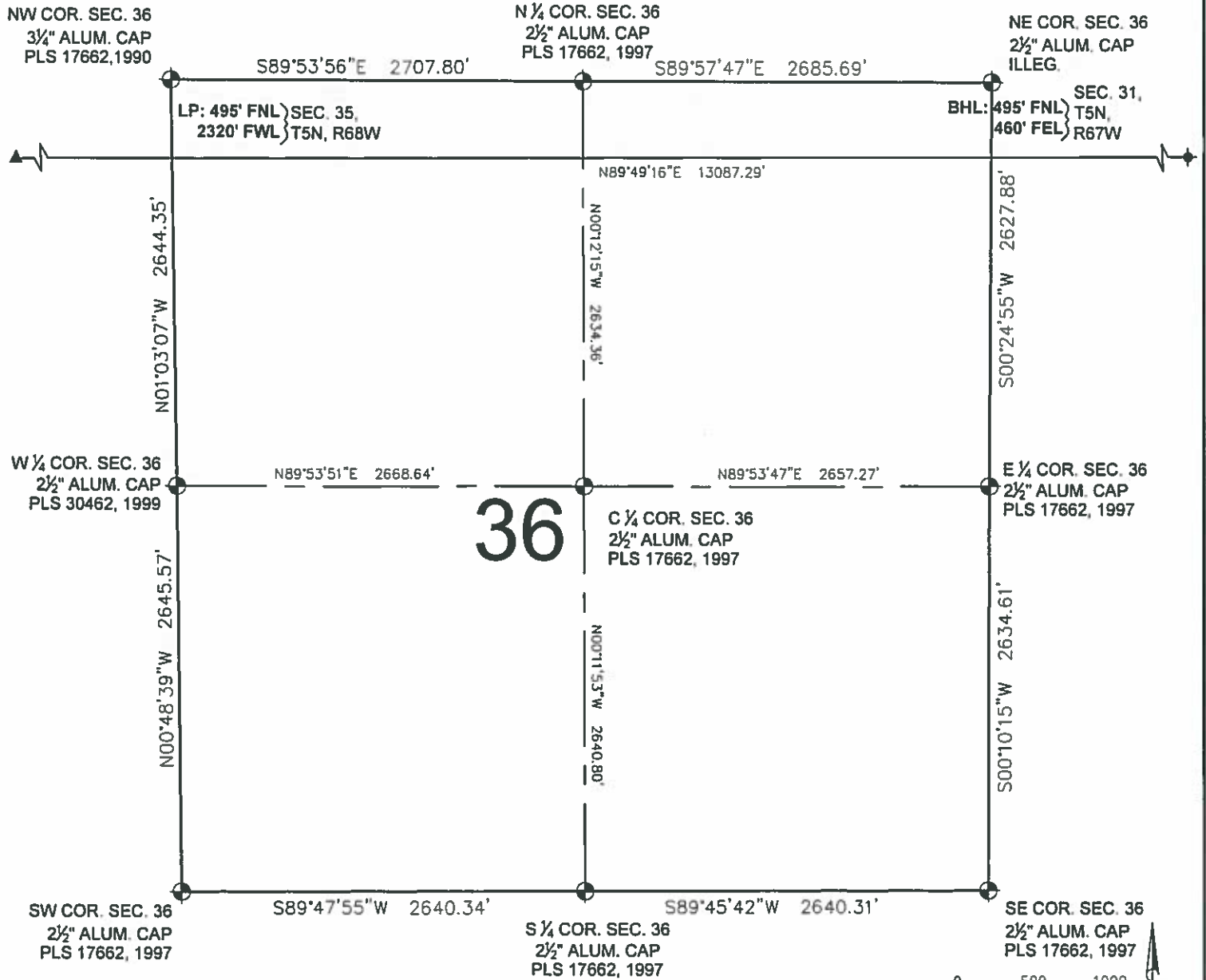
SURFACE LOCATION:

SW 1/4 NE 1/4 SEC. 35, T5N, R68W, 6TH P.M.
LARIMER COUNTY, COLORADO

PREPARED FOR



JOHNSONS CORNER EAST 2-C WELL LOCATION CERTIFICATE



0 500 1000
SCALE: 1" = 1000'

LEGEND

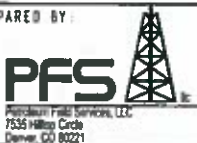
- ⊕ = EXISTING MONUMENT
- = CALCULATED POSITION
- = PROPOSED WELL
- ◆ = EXISTING WELL
- ⚡ = BOTTOM HOLE
- ▲ = LANDING POINT
- LP = LANDING POINT
- BHL = BOTTOM HOLE LOCATION

MICHAEL L. POOL, PLS 38304
COLORADO LICENSED PROFESSIONAL LAND SURVEYOR
FOR AND ON BEHALF OF P.F.S., LLC



SHEET 2 OF 3

PREPARED BY:



FIELD DATE:

07-28-14

DRAWING DATE:

02-28-17

BY:

IJM

CHECKED BY:

JLG

WELL NAME:

JOHNSONS CORNER EAST 2-C

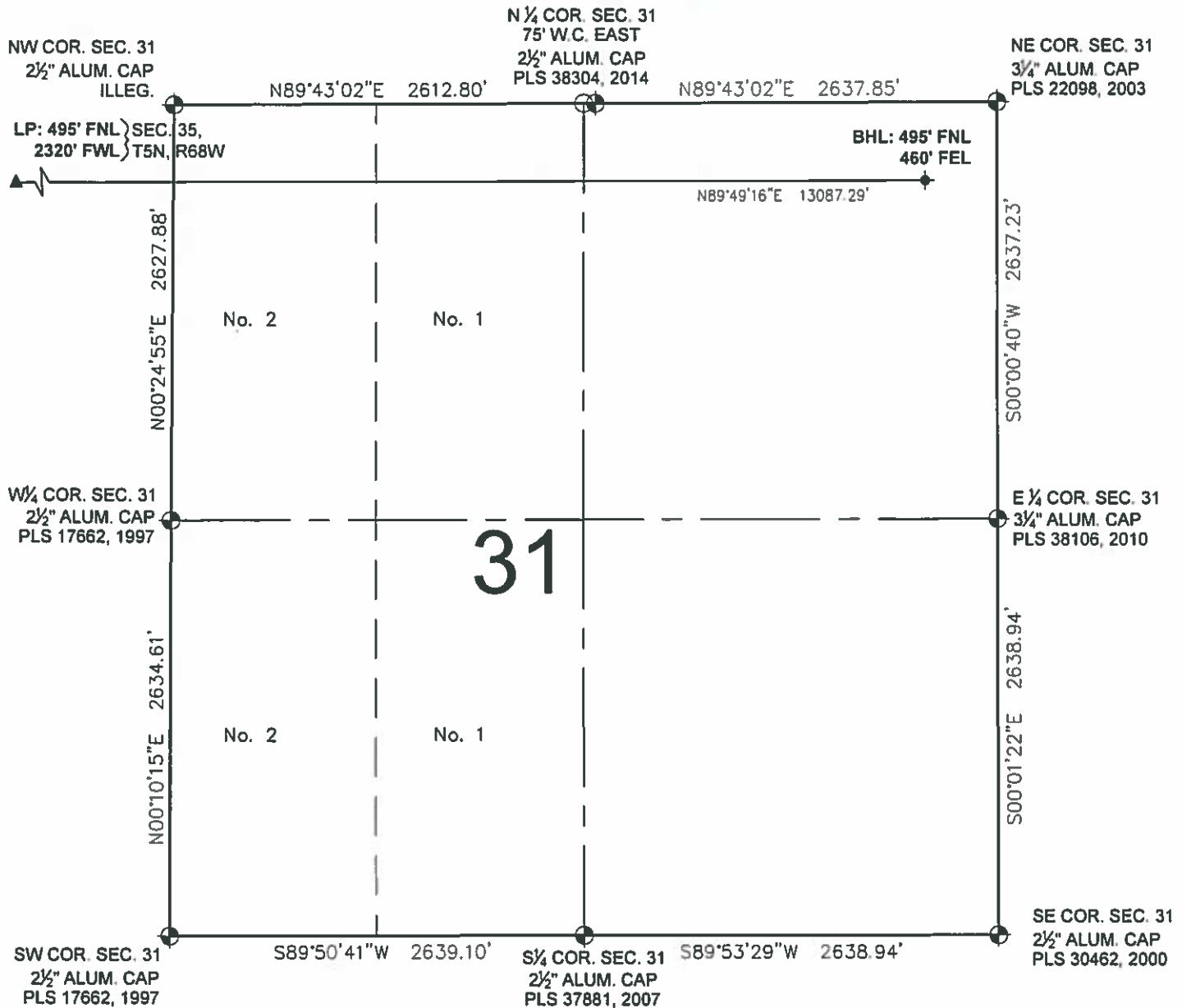
SURFACE LOCATION:

SW 1/4 NE 1/4 SEC. 35, T5N, R68W, 6TH P.M.
LARIMER COUNTY, COLORADO

PREPARED FOR:

EXTRACTION
Oil & Gas

JOHNSONS CORNER EAST 2-C WELL LOCATION CERTIFICATE



0 500 1000
SCALE: 1" = 1000'



LEGEND

- ⊕ = EXISTING MONUMENT
- = CALCULATED POSITION
- = PROPOSED WELL
- ◆ = EXISTING WELL
- ⬮ = BOTTOM HOLE
- ▲ = LANDING POINT
- LP = LANDING POINT
- BHL = BOTTOM HOLE LOCATION

MICHAEL L. POOL, PLS 38304
COLORADO LICENSED PROFESSIONAL LAND SURVEYOR
FOR AND ON BEHALF OF P.F.S., LLC



SHEET 3 OF 3

PREPARED BY:  Petroleum Field Services, LLC 7535 Hilltop Circle Denver, CO 80221	FIELD DATE: 07-28-14	WELL NAME: JOHNSONS CORNER EAST 2-C	PREPARED FOR:  EXTRACTION Oil & Gas
	DRAWING DATE: 02-28-17	SURFACE LOCATION: SW 1/4 NE 1/4 SEC. 35, T5N, R68W, 6TH P.M. LARIMER COUNTY, COLORADO	
BY: IJM	CHECKED BY: JLG		