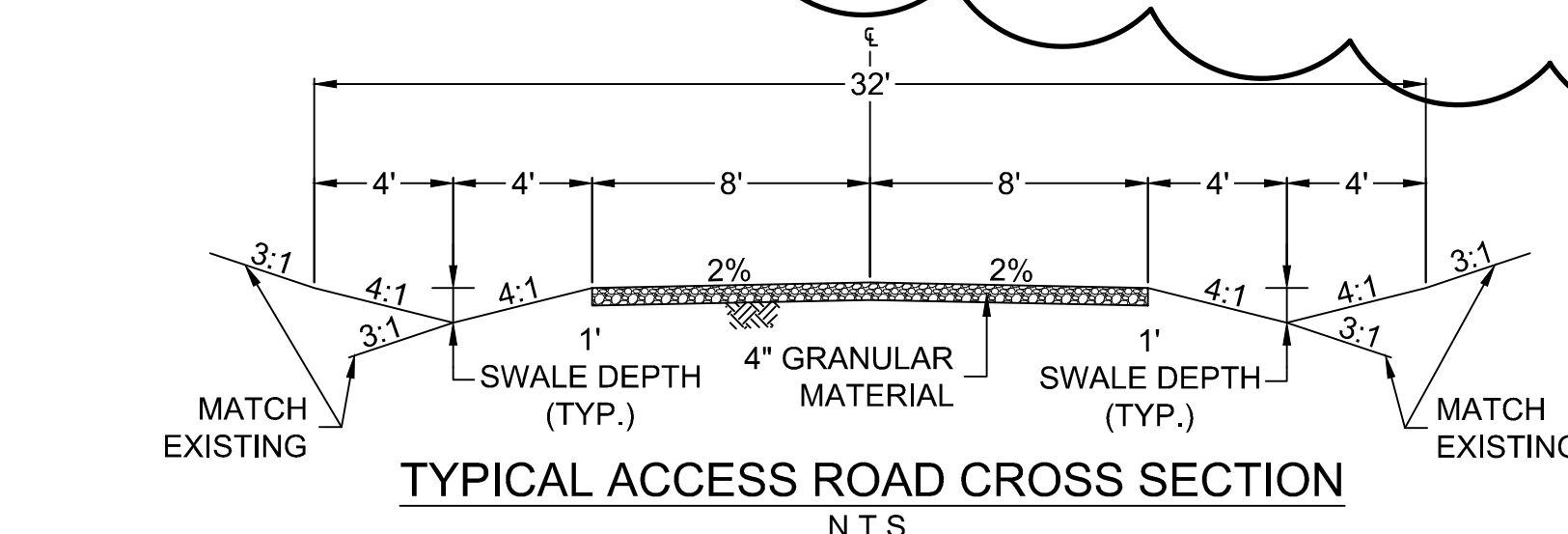
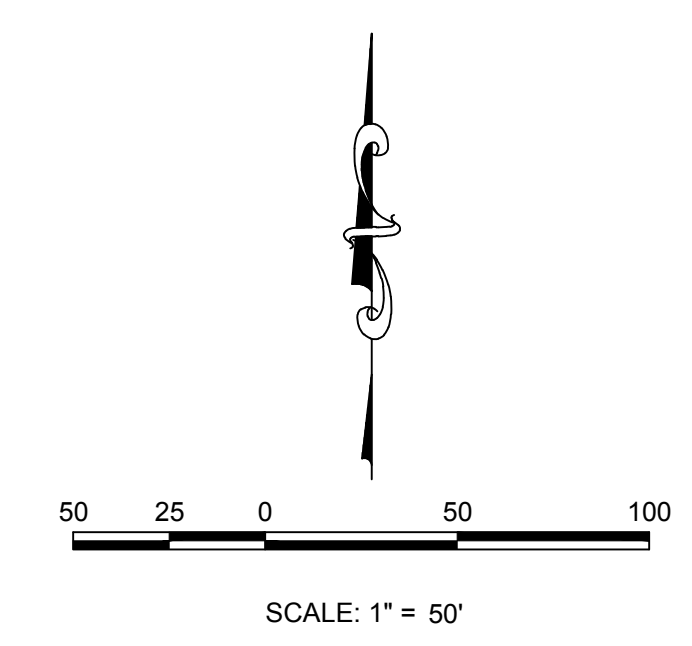


PLAN 1: WELL PAD SITE
HORIZONTAL SCALE: 1" = 50'

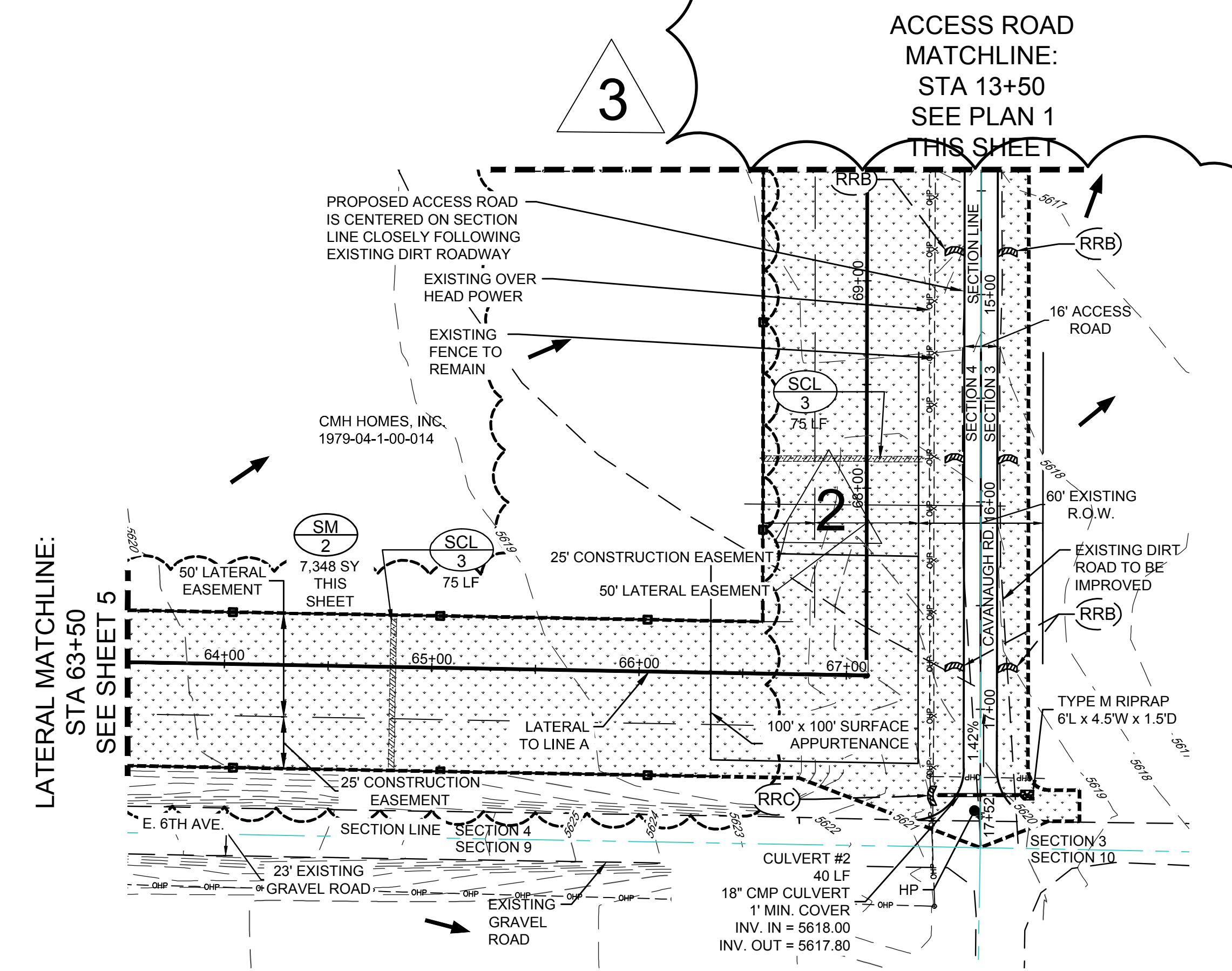


ACCESS ROAD MATCHLINE:
STA 13+50
SEE PLAN 2
THIS SHEET



NOTES:
1. SEE THE ARAPAHOE COUNTY GESC PLAN STANDARD NOTES AND DETAILS, REVISED JANUARY 2010 (3 SHEETS) FOR ALL STANDARD DETAILS, NOTES AND LEGENDS OF BMP NAMES AND SYMBOLS.
2. QUANTITIES:
EXISTING GRADE AT WELL HEAD = 5618.3
PAD SITE ELEVATION = 5617.2 (GROUND), 5617.7 (GRAVEL)
CUT SLOPES = 3:1
FILL SLOPES = 3:1
TOPSOIL = 2916 CY REMOVED, 240 CY PLACED @ 3" DEPTH ON PAD CUT/FILL
TOTAL CUT = 1508CY (DOES NOT INCLUDE TOPSOIL)
TOTAL FILL = 1508CY (INCLUDES 10% ADJUSTMENT FOR COMPACTION)
GRAVEL BASE AT 6" DEPTH = 2,963 CY
TOTAL DISTURBED AREA = 9.5 ACRES (INCLUDING ACCESS ROADWAY)
*SEE THE QUANTITIES/COST ESTIMATE ON THE COVER SHEET FOR THE PROJECT GESC COLLATERAL AMOUNT
3. ALL DIVERSION DITCHES ARE ANTICIPATED TO BE UNLINED.
4. THE DIMENSION OF THE CRUSHED ROCK AROUND THE SEDIMENT BASIN RISER PIPE IS LARGER THAN THE HOLE DIAMETER.
5. ALL BMP'S ARE FINAL UNLESS DASHED LINE TYPE. DASHED LINE TYPE BMP'S ARE INTERIM.

DETAIL SHEET		BMP LEGEND	
NO.	NO.		
1	1	CD	CHECK DAM
2	1	CB	COMPOST BLANKET
3	1	CFB	COMPOST FILTER BERM
4	1	CWA	CONCRETE WASHOUT AREA
5	1	CF	CONSTRUCTION FENCE
6	1	CM	CONSTRUCTION MARKERS
7	1	CS	CURB SOCK-INLET PROTECTION
8	1	DW	DEWATERING
9	1	DD	DIVERSION DITCH
10	2	ECB	EROSION CONTROL BLANKET
11	2	FGM	FLEXIBLE GROWTH MEDIUM
12	2	IP	INLET PROTECTION
13	2	RCD	REINFORCED CHECK DAM
14	2	RRB	REINFORCED ROCK BERM
15	2	RRC	RRB FOR CULVERT PROTECTION
16	2	SB	SEDIMENT BASIN
17	3	SCL	SEDIMENT CONTROL LOG
18	3	ST	SEDIMENT TRAP
19	3	SM	SEEDING AND MULCHING
20	3	SF	SILT FENCE
21	3	SSA	STABILIZED STAGING AREA
22	3	SR	SURFACE ROUGHENING
23	3	TSD	TEMPORARY SLOPE DRAIN
24	3	TSC	TEMPORARY STREAM CROSSING
25	3	TER	TERRACING
26	3	VTC	VEHICLE TRACKING CONTROL
27	3	WW	VTC WITH WHEEL WASH
			ROCK AND RIPRAP GRADATIONS
		LOC	LIMITS OF CONSTRUCTION
			AREA OUTSIDE OF LIMITS OF CONSTRUCTION, LOC



PLAN 2: ACCESS ROAD STA: 13+50 - 16+62
HORIZONTAL SCALE: 1" = 50'

BMP PHASE
1. INITIAL
2. INTERIM
3. FINAL

BENCHMARK
BENCHMARK 374 LOCATED ON THE SECTION LINE
BETWEEN SECTIONS 12 AND 13, T5S, R64W, 6TH
P.M., TAKEN FROM 1988 PUBLISHED DATUM BY THE
UNITED STATES DEPARTMENT OF THE INTERIOR,
GEOLOGICAL SURVEY AS BEING 6054.61 FEET.

CALL 811
TWO WORKING DAYS
BEFORE YOU DIG
UNCC 1-800-922-1987
UTILITY NOTIFICATION
CENTER OF COLORADO

10333 E. Dry Creek Rd. Englewood, CO 80110 Tel: (720) 482-9526 Fax: (720) 482-9548	10333 E. Dry Creek Rd. Englewood, CO 80110 Tel: (720) 482-9526 Fax: (720) 482-9548	10333 E. Dry Creek Rd. Englewood, CO 80110 Tel: (720) 482-9526 Fax: (720) 482-9548	10333 E. Dry Creek Rd. Englewood, CO 80110 Tel: (720) 482-9526 Fax: (720) 482-9548
CONOCOPHILLIPS COMPANY ATTN: MAXWELL BLAIR 34801 E. QUINCY AVE. BAYTOWN, CO 80137 PHONE: (303) 468-3711	CONOCOPHILLIPS COMPANY ATTN: MAXWELL BLAIR 34801 E. QUINCY AVE. BAYTOWN, CO 80137 PHONE: (303) 468-3711	CONOCOPHILLIPS COMPANY ATTN: MAXWELL BLAIR 34801 E. QUINCY AVE. BAYTOWN, CO 80137 PHONE: (303) 468-3711	CONOCOPHILLIPS COMPANY ATTN: MAXWELL BLAIR 34801 E. QUINCY AVE. BAYTOWN, CO 80137 PHONE: (303) 468-3711
SCALE: AS SHOWN DRAWN BY: DK CHECKED BY: GM DATE: 08-18-14	SCALE: AS SHOWN DRAWN BY: DK CHECKED BY: GM DATE: 08-18-14	SCALE: AS SHOWN DRAWN BY: DK CHECKED BY: GM DATE: 08-18-14	SCALE: AS SHOWN DRAWN BY: DK CHECKED BY: GM DATE: 08-18-14
FILE NO: 8.13.0201645	FILE NO: 8.13.0201645	FILE NO: 8.13.0201645	FILE NO: 8.13.0201645
SHEET NUMBER 3	SHEET NUMBER 3	SHEET NUMBER 3	SHEET NUMBER 3