

NOBLE ENERGY INC.

Pauline PJ 05

SWSW 8-5N-64W

1320 FSL & 1320 FWL

WELD COUNTY, CO

Wattenberg

CURRENT WELLBORE SCHEMATIC

with PROPOSED P&A

Written: 4/6/2017

API: 05-123-25616

GL Elev: 4592'

KB Elev: 4604'

Spud Date: 2/5/2005

Surface Casing:

8.625" 24# J-55 @ 411' KB

Cement: 335 sx

TOC: Surface

Water Well	103	253
FH:	161	311
Sfc Casing	411	511
Min. shoe plug depth:		511

TOC @ Surface

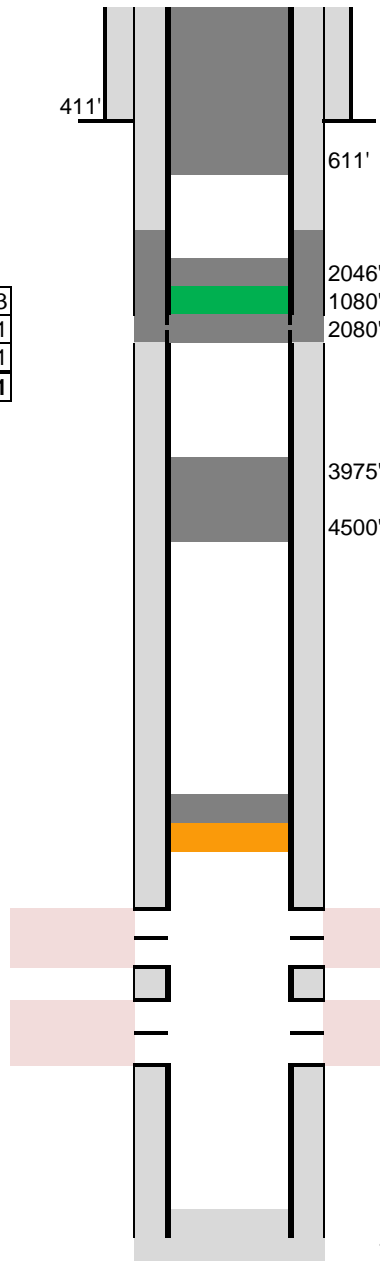
Nio Log Top: 6517'

Production Casing:

4.5" 11.6# M-80 @ 6960' KB

Cement: 530 sx

TD: 2/10/2005



Cut surface casing off 6'-8' below surface.

Pump approx 50 sx shoe plug @ 611'
Will bring cement to surface

TOC: 1580' in pipe
Pump 190 sx through and 10 sx on top
Set CICR @ 1,080'
Perforate csg @ 2,080', using DynaSlot

TOC: 3975' in pipe
Pump 40 sx balance plug from 4500' to 3975'

Set CIBP @ 6446' and 2 sx cement on top

Niobrara Perforations: 6496-6716' KB

Codell Perforations: 6804-6818' KB

TD: 6995' KB