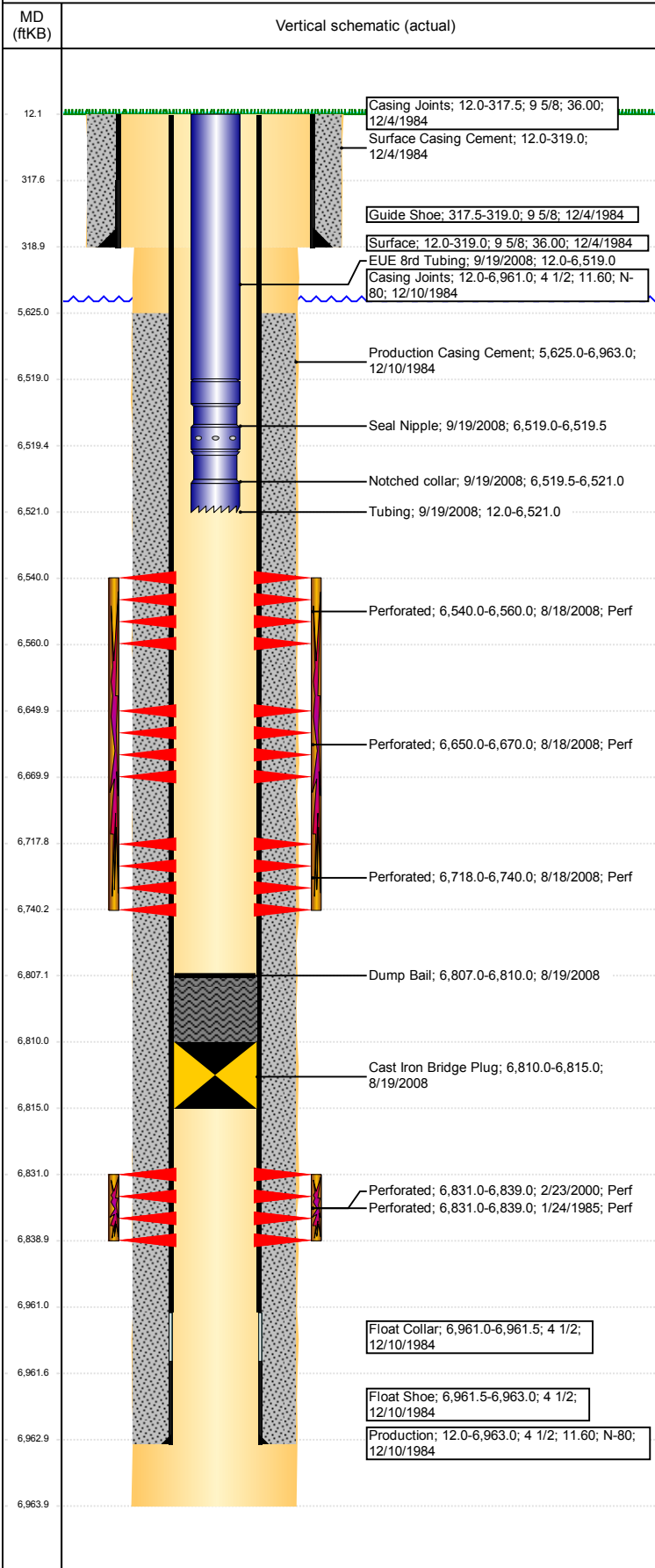


Well Name: PAULINE 1

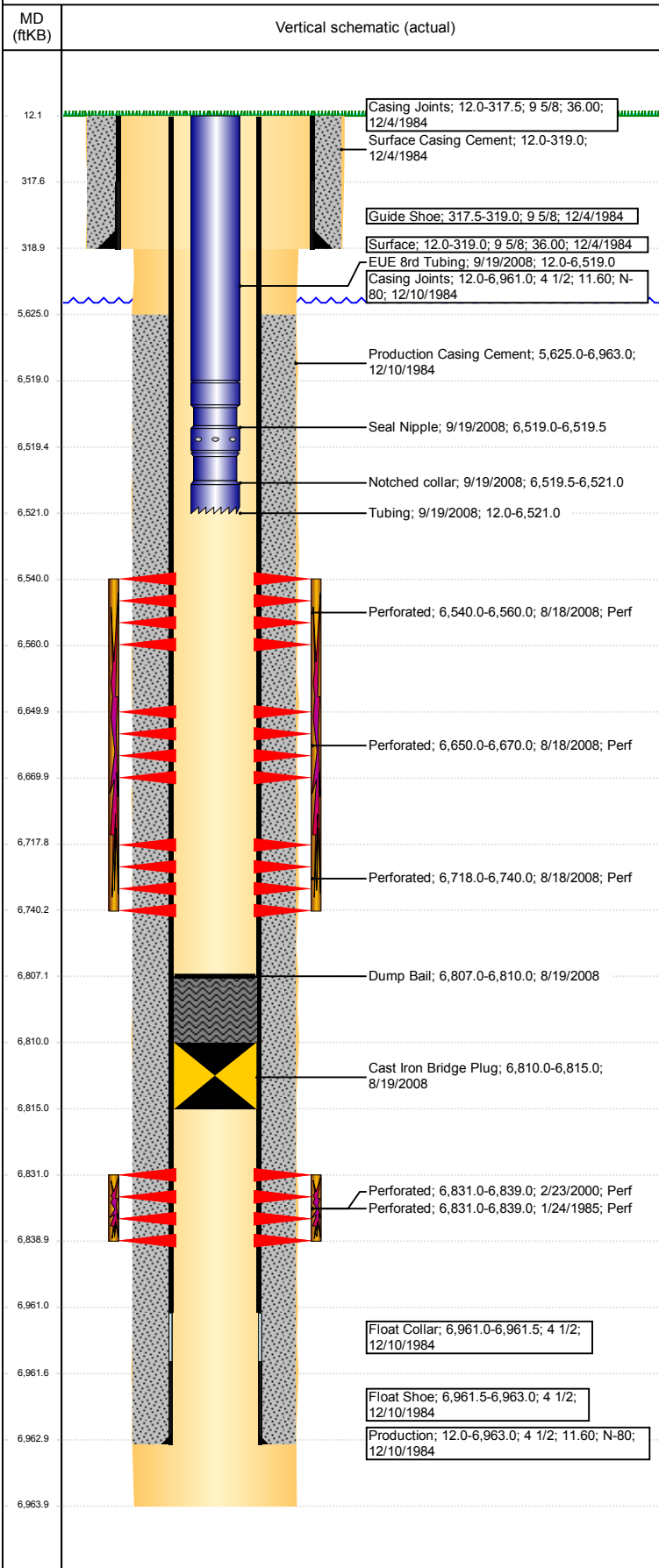
Vertical - ORIGINAL HOLE, 4/18/2017 3:07:14 PM



Well Header							
API 05-123-12138	Business Unit DJ BASIN	District 15	Well Config Vertical				
Original KB Elevation (ft) 4,608	KB - GL / MSL (ftKB) 12.00	Spud Date 12/4/1984	P & A Date				
Comment MISSING DRILL REPORTS. FRAC DATE ESTIMATED							
Directions To Well							
Congressional Location							
Quarter 3	Quarter 4	Section	Township	TwNS Dir	Range E/W Dir		
Bottom Hole Location							
North-South Distance (ft)		From N or S Line	East-West Distance (ft)		From E or W Line		
Plug Back Total Depths							
Date	Depth (ftKB)	Method	Com				
12/13/1984	6,931.0	CASED HOLE LOG	DEPTH LOGGER ON CBL				
9/19/2008	6,807.0	TAG	CLEAN OUT TO LAND TUBING				
Wellbore Sections							
Section Des		Size (in)	Act Top, MD (ftKB)	Act Btm, MD (ftKB)			
SURFACE		12 1/4	12	319			
PRODUCTION		7 7/8	319	6,964			
Zone Statuses							
Zone Name	Status Date	Status	Fluid Type	Job	Prod Method		
CODELL	1/31/1985	PR		COMPLETION...			
CODELL	2/28/2000	PR		RE-FRAC, 2/22...			
CODELL	8/19/2008	TA		RECOMPLETI...			
NIOBRARA	8/28/2008	PR		RECOMPLETI...			
Casing Strings							
Surface, 319.0ftKB							
Casing Description Surface	Run Date 12/4/1984	OD (in) 9 5/8	Wt/Len (l...) 36.00	Grade	Top, MD (ft...) 12.0	MD (ftKB) 319.0	
Production, 6,963.0ftKB							
Casing Description Production	Run Date 12/10/1984	OD (in) 4 1/2	Wt/Len (l...) 11.60	Grade N-80	Top, MD (ft...) 12.0	MD (ftKB) 6,963.0	
Cement							
Description Surface Casing Cement				Top Depth (ftKB) 12.0	Bottom Depth (ftKB) 319.0		
Description Production Casing Cement				Top Depth (ftKB) 5,625.0	Bottom Depth (ftKB) 6,963.0		
Description Dump Bail				Top Depth (ftKB) 6,807.0	Bottom Depth (ftKB) 6,810.0		
Tubing Strings							
Tubing Description Tubing	Run Date 9/19/2008	String... 2 3/8	ID (in) 2.00	Wt (lb/ft) 4.70	Grade	Len (ft) 6,509.00	Set De...
Tubing Components							
Item Des	OD (in)	Wt (lb/ft)	Grade	Jts	Len (ft)	Btm (ftKB)	Btm (TVD) (ftKB)
EUE 8rd Tubing	2 3/8	4.70		201	6,507.00	6,519.0	
Seal Nipple	2 3/8			1	0.50	6,519.5	
Notched collar	2 3/8			1	1.50	6,521.0	
Other In Hole							
Run Date	Des			OD (in)	Top (ftKB)	Btm (ftKB)	
8/19/2008	Cast Iron Bridge Plug			4	6,810.0	6,815.0	
Logs							
Date	Type			Top, MD (ftKB)	Btm, MD (ftKB)		
12/10/1984	COMPENSATED DENSITY			3,450.0	6,962.0		
12/10/1984	INDUCTION			320.0	6,963.0		
12/13/1984	CEMENT BOND			5,571.0	6,925.0		
11/23/2015	GYRO			10.0	6,500.0		
Perforation Data							
Linked Zone	Bnch/St g	Sum of Entered Shot Total	Top (ftKB)	Btm (ftKB)	Date		
NIOBRARA, ORIGINAL HOLE		120	6,540.00	6,560.00	8/18/2008		
NIOBRARA, ORIGINAL HOLE		120	6,650.00	6,670.00	8/18/2008		
NIOBRARA, ORIGINAL HOLE		132	6,718.00	6,740.00	8/18/2008		
CODELL, ORIGINAL HOLE		24	6,831.00	6,839.00	1/24/1985		

Well Name: PAULINE 1

Vertical - ORIGINAL HOLE, 4/18/2017 3:07:15 PM



Perforation Data					
Linked Zone	Bnch/St g	Sum of Entered Shot Total	Top (ftKB)	Btm (ftKB)	Date
CODELL, ORIGINAL HOLE		32	6,831.00	6,839.00	2/23/2000
Total (Sum)		428			
Stimulation Intervals					
Start Date 1/27/1985		Primary Job Type COMPLETION - ORIGINAL			
Technical Result		Tech Result Details		Tech Result Note	
Comment					
Start Date 2/25/2000		Primary Job Type RE-FRAC			
Technical Result		Tech Result Details		Tech Result Note	
Comment					
Start Date 8/18/2008		Primary Job Type RECOMPLETION			
Technical Result		Tech Result Details		Tech Result Note	
Comment					