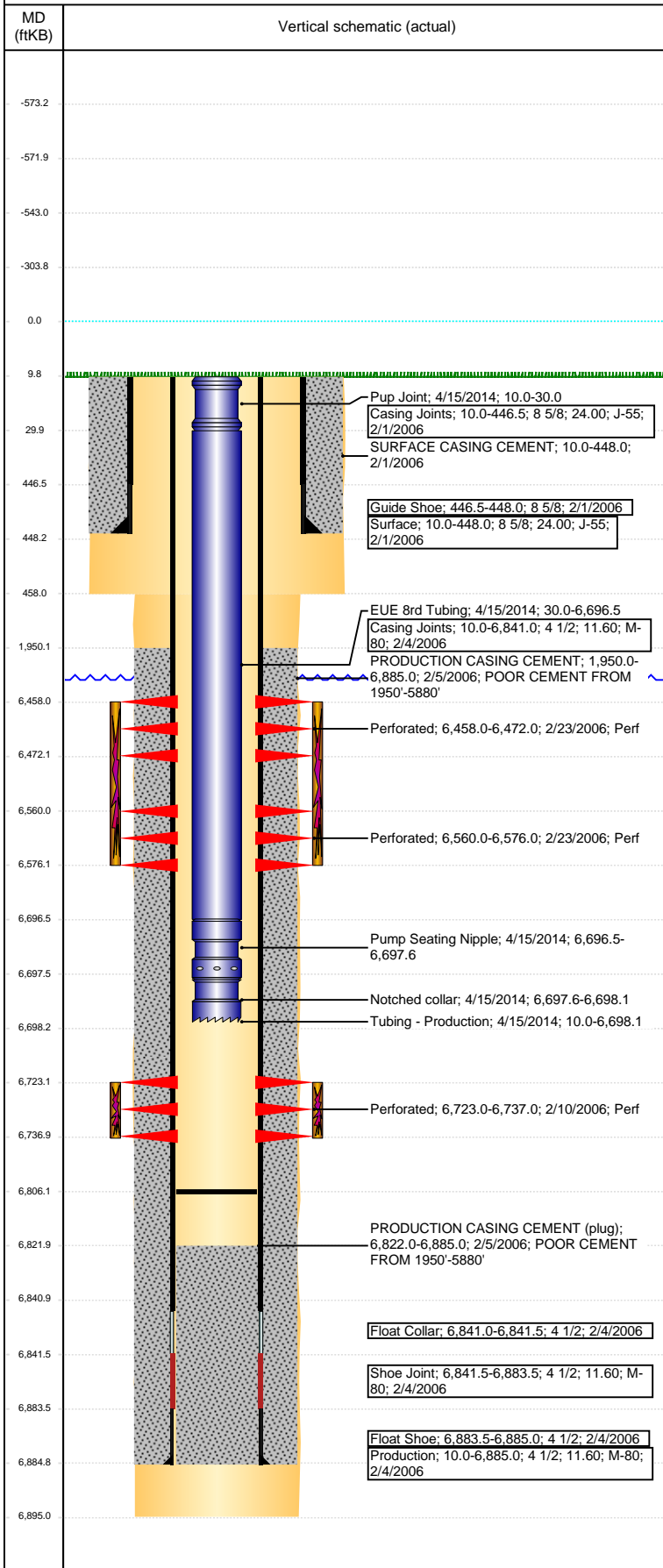


Well Name: PECKOCK B10-23

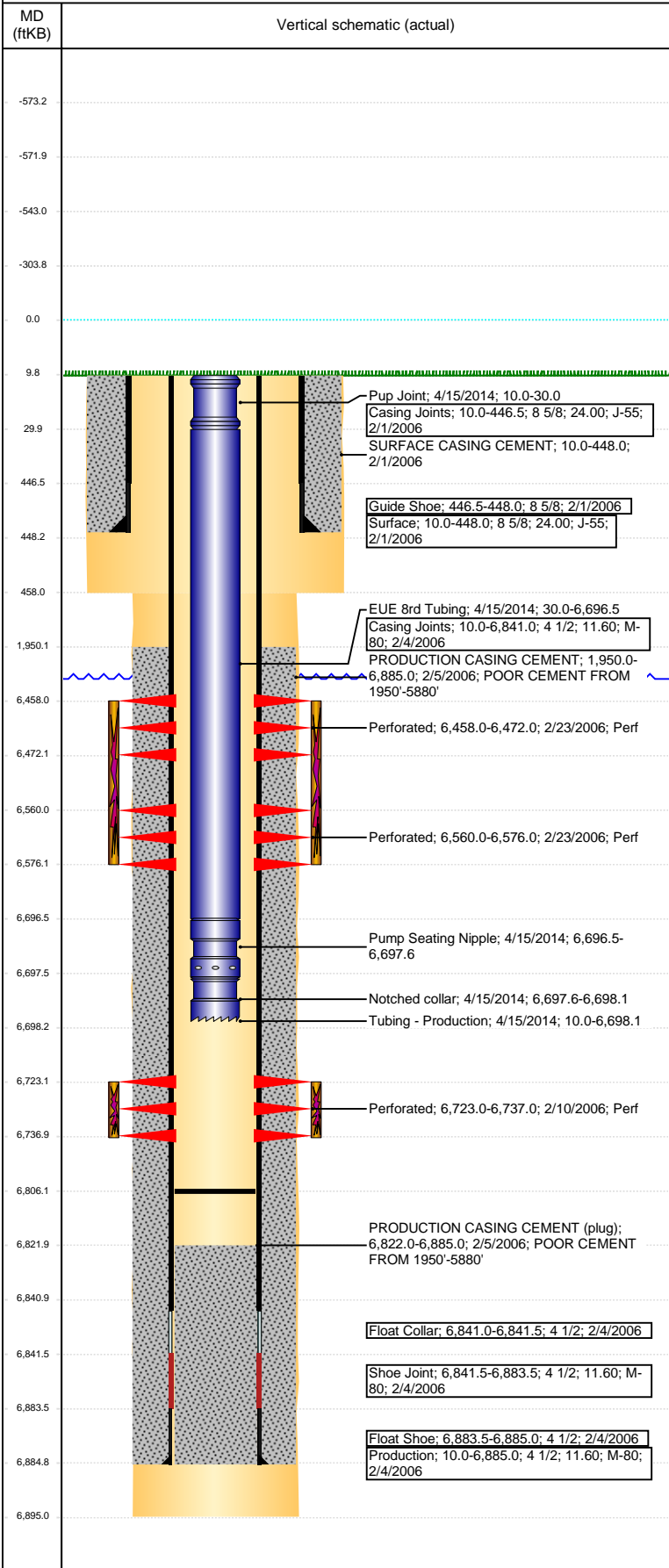
VERTICAL - ORIGINAL HOLE, 4/18/2017 3:24:22 PM



Well Header						
API 05-123-23544	Business Unit DJ BASIN	District 15	Well Config VERTICAL			
Original KB Elevation (ft) 4,610	KB - GL / MSL (ftKB) 10.00	Spud Date 1/31/2006	P & A Date			
Comment						
Directions To Well CR 388 AND 55.5, EAST 4/10, NORTH 2/10 INTO						
Congressional Location						
Quarter 3 NE	Quarter 4 SE	Section 10	Township 5	Twntshp N/S Dir N	Range 64	Range E/W Dir W
Bottom Hole Location						
North-South Distance (ft)		From N or S Line		East-West Distance (ft)		From E or W Line
Plug Back Total Depths						
Date	Depth (ftKB)	Method	Com			
2/4/2006	6,841.0	CASING TALLY	FLOAT SHOE W/BAFFLE			
2/10/2006	6,822.0	CASED HOLE LOG	DEPTH LOGGER ON CBL			
3/28/2006	6,798.0	TAG	CLEAN OUT TO LAND TGB			
12/30/2013	6,806.0	TAG				
Wellbore Sections						
Section Des		Size (in)	Act Top, MD (ftKB)		Act Btm, MD (ftKB)	
SURFACE		12 1/4	10		458	
PRODUCTION		7 7/8	458		6,895	
Zone Statuses						
Zone Name	Status Date	Status	Fluid Type	Job	Prod Method	
NIOBRARA	2/25/2006	PR		DRILLING/CO...		
CODELL	2/25/2006	PR		DRILLING/CO...		
Casing Strings						
Surface, 448.0ftKB						
Casing Description Surface	Run Date 2/1/2006	OD (in) 8 5/8	Wt/Len (l...) 24.00	Grade J-55	Top, MD (ft...) 10.0	MD (ftKB) 448.0
Production, 6,885.0ftKB						
Casing Description Production	Run Date 2/4/2006	OD (in) 4 1/2	Wt/Len (l...) 11.60	Grade M-80	Top, MD (ft...) 10.0	MD (ftKB) 6,885.0
Cement						
Description SURFACE CASING CEMENT					Top Depth (ftKB) 10.0	Bottom Depth (ftKB) 448.0
Description PRODUCTION CASING CEMENT					Top Depth (ftKB) 1,950.0	Bottom Depth (ftKB) 6,885.0
Tubing Strings						
Tubing Description Tubing	Run Date 3/29/2006	String... 2 3/8	ID (in) 2.00	Wt (lb/ft) 4.70	Grade J-55	Len (ft) 6,696.00
Tubing Description Tubing - Production	Run Date 1/2/2014	String... 2 3/8	ID (in) 2.00	Wt (lb/ft) 4.70	Grade J-55	Len (ft) 5,744.70
Tubing Description Tubing - Production	Run Date 4/15/2014	String... 2 3/8	ID (in) 2.00	Wt (lb/ft) 4.70	Grade J-55	Len (ft) 6,688.07
Tubing Components						
Item Des	OD (in)	Wt (lb/ft)	Grade	Jts	Len (ft)	Btm (ftKB)
Pup Joint	2 3/8		N-80	2	20.00	30.0
EUE 8rd Tubing	2 3/8	4.70	J-55	206	6,666.47	6,696.5
Pump Seating Nipple	2 3/8	1.10		1	1.10	6,697.6
Notched collar	2 3/8			1	0.50	6,698.1
Other In Hole						
Run Date	Des			OD (in)	Top (ftKB)	Btm (ftKB)
Logs						
Date	Type				Top, MD (ftKB)	Btm, MD (ftKB)
2/4/2006	COMPENSATED DENSITY				2,600.0	6,877.0
2/4/2006	INDUCTION				448.0	6,897.0
2/10/2006	CEMENT BOND				1,719.0	6,817.0
11/1/2011	GYRO				10.0	6,650.0

Well Name: PECOCK B10-23

VERTICAL - ORIGINAL HOLE, 4/18/2017 3:24:23 PM



Perforation Data					
Linked Zone	Bnch/St g	Sum of Entered Shot Total	Top (ftKB)	Btm (ftKB)	Date
NIOBRARA, ORIGINAL HOLE		84	6,458.00	6,472.00	2/23/2006
NIOBRARA, ORIGINAL HOLE		96	6,560.00	6,576.00	2/23/2006
CODELL, ORIGINAL HOLE		56	6,723.00	6,737.00	2/10/2006
Total (Sum)		236			
Stimulation Intervals					
Start Date		Primary Job Type			
2/23/2006		DRILLING/COMPLETION - ORIGINAL			
Technical Result		Tech Result Details		Tech Result Note	
Comment					
Start Date		Primary Job Type			
2/23/2006		DRILLING/COMPLETION - ORIGINAL			
Technical Result		Tech Result Details		Tech Result Note	
Comment					