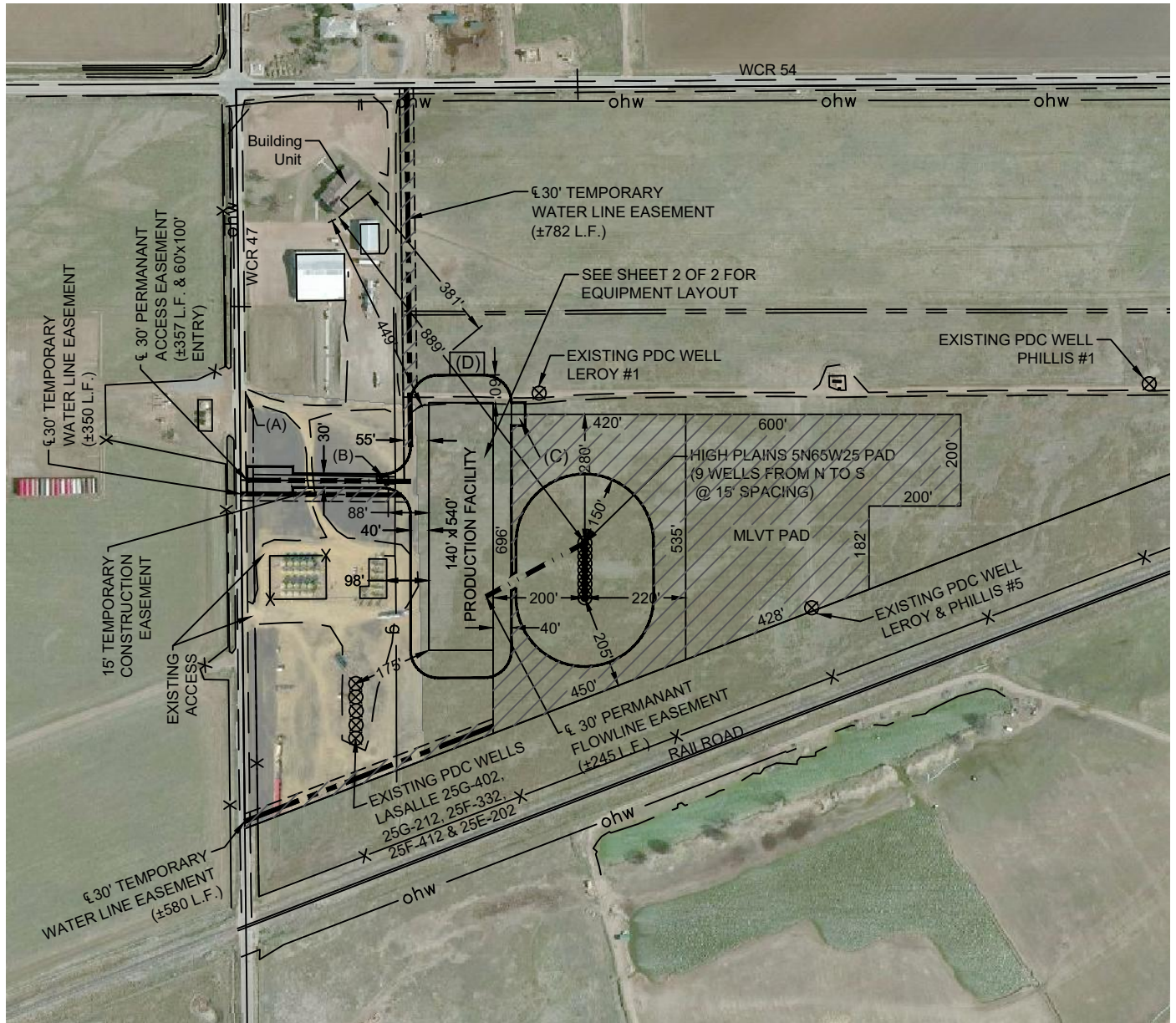




Washburn Land Surveying
www.WashburnSurveying.com
970-232-9645

SCALED FACILITY HIGH PLAINS 5N65W25AF PAD

SECTION: 25
TOWNSHIP: 5N
RANGE: 65W
6TH P.M.
WELD COUNTY, CO



//// - RECLAIMED AREA(S)

TOTAL DISTURBED AREA OF LOCATION: ± 15.4 ACRES
TOTAL SIZE OF LOCATION AFTER RECLAMATION: ± 6.1 ACRES

- — — — — - APPROXIMATE ½ PERMANENT ACCESS EASEMENT
- — — — — - APPROXIMATE ½ TEMPORARY WATERLINE EASEMENT
- — — — — - APPROXIMATE ½ PERMANENT FLOWLINE EASEMENT
- - - - - - PROPERTY DESIGNATED "USR"

- (A) - EXISTING ACCESS TO BE VACATED AFTER CONSTRUCTION HAS BEEN COMPLETED DURING PAD RECLAMATION.
- (B) - EXISTING RISER FACILITY.
- (C) - 30' X 50' OIL METERING AREA.
- (D) - 75' X 50' TEMPORARY WATER TANK AREA.



Scale 1" = 350'

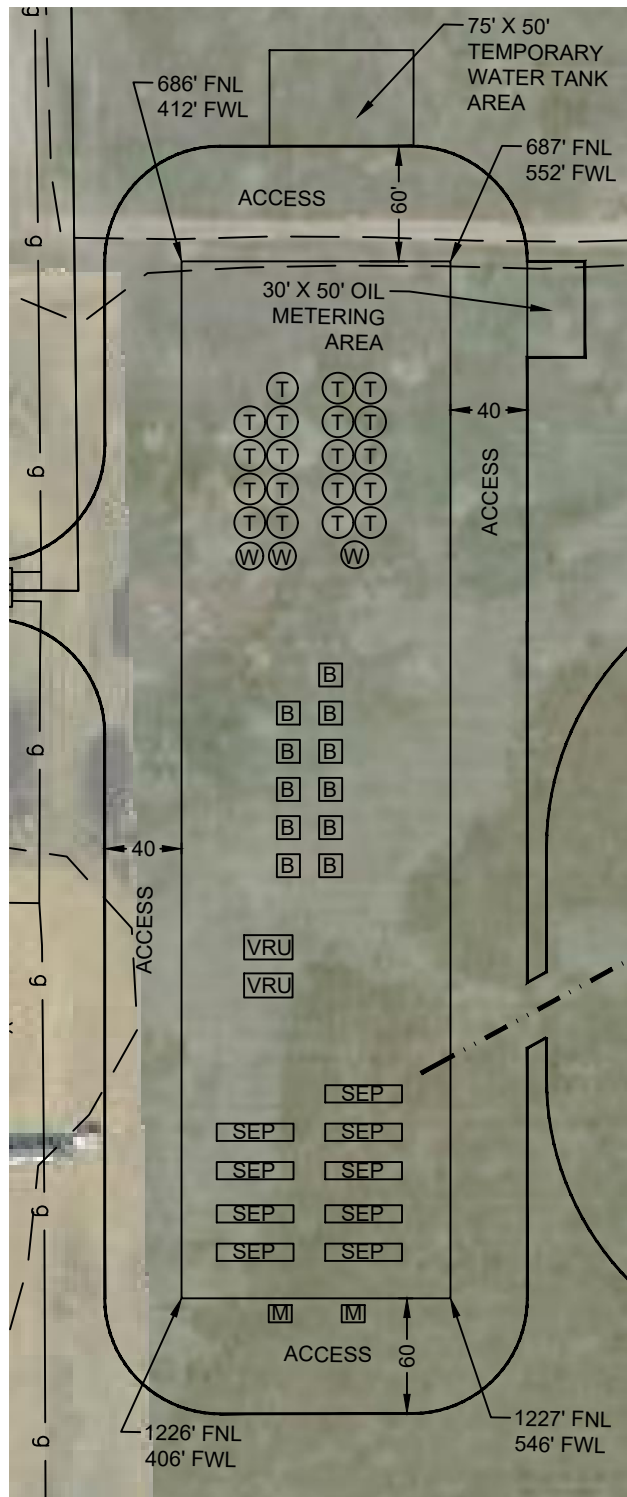




Washburn Land Surveying
www.WashburnSurveying.com
970-232-9645

SCALED FACILITY HIGH PLAINS 5N65W25AF PAD

SECTION: 25
TOWNSHIP: 5N
RANGE: 65W
6TH P.M.
WELD COUNTY, CO



LEGEND:

- ⊙ TANK BATTERY
- ⊙ WATER VAULT
- ⊞ METER
- ⊞ BURNER/ECD
- ⊞ VRU VAPOR RECOVERY UNIT
- ⊞ SEPARATOR

