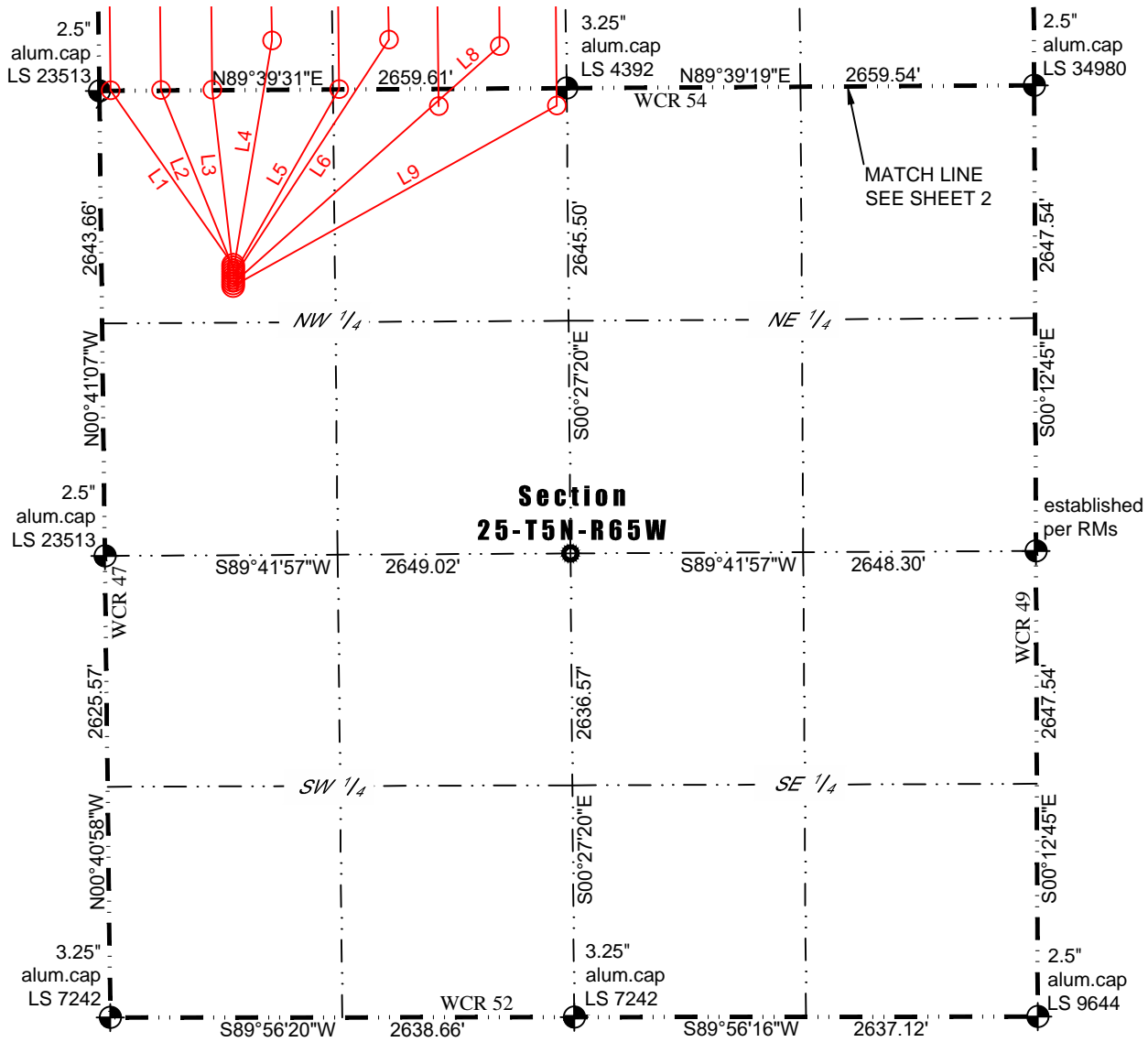




Washburn Land Surveying
www.WashburnSurveying.com
970-232-9645

MULTI-WELL EXHIBIT HIGH PLAINS 5N65W25AF PAD

SECTION: 25
TOWNSHIP: 5N
RANGE: 65W
6TH P.M.
WELD COUNTY, CO

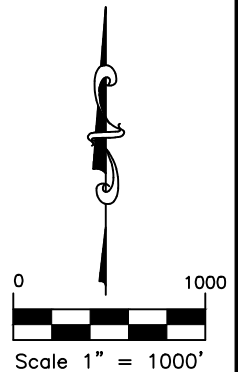


**Section
25-T5N-R65W**

Line Table		
Line #	Length	Bearing
L1	1212'	N35°05'31"W
L2	1089'	N22°09'39"W
L3	1032'	N06°36'12"W
L4	1338'	N09°30'32"E
L5	1219'	N29°39'55"E
L6	1620'	N33°09'48"E
L7	1534'	N49°40'38"E
L8	2030'	N48°21'08"E
L9	2109'	N60°53'51"E

LEGEND

- - Found Survey Monument
- - Calculated Location
- ⊙ - Surface Hole Location (SHL)
- - Entry Point Location (EPL)
- ✕ - Bottom Hole Location (BHL)

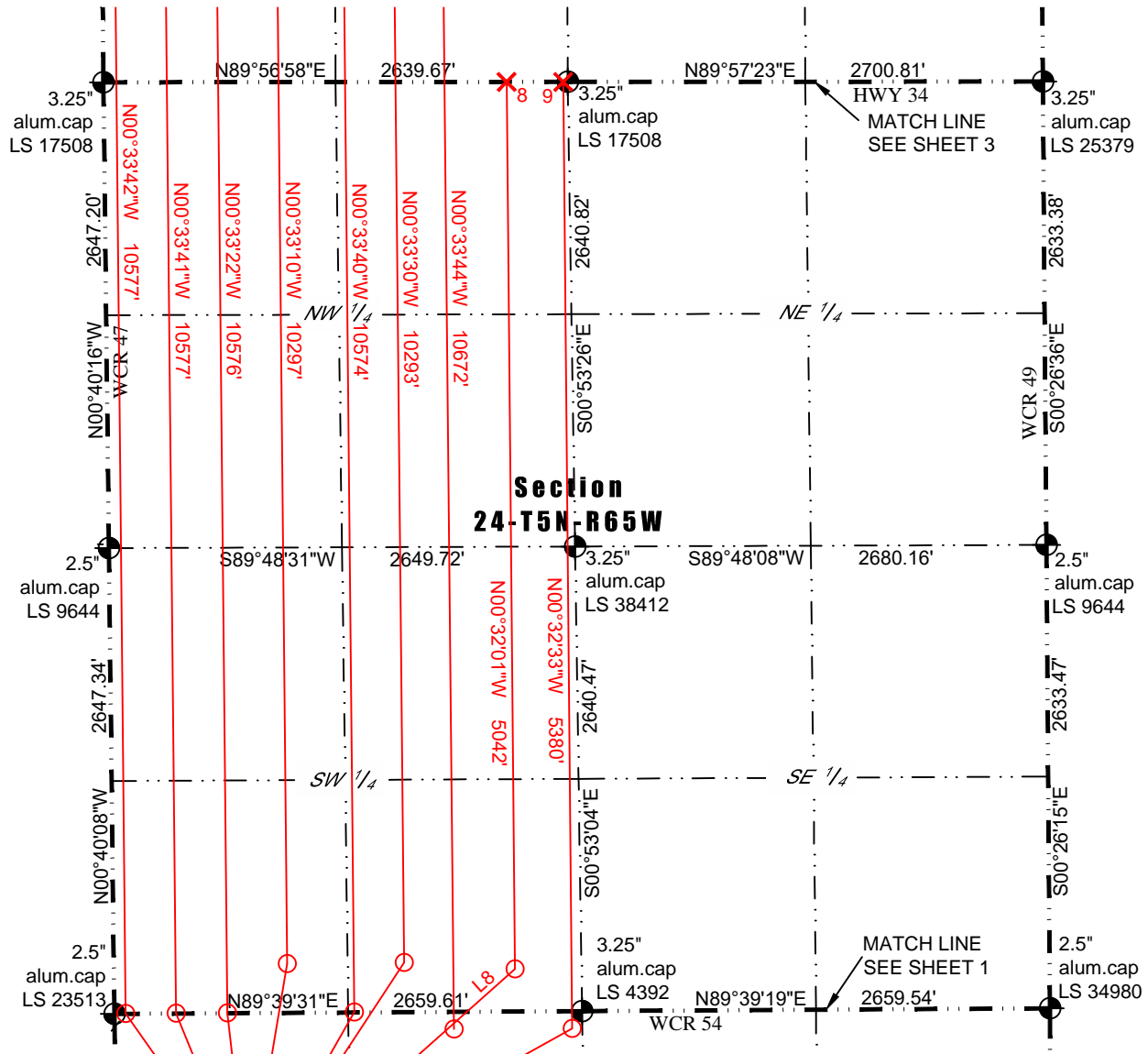




Washburn Land Surveying
www.WashburnSurveying.com
970-232-9645

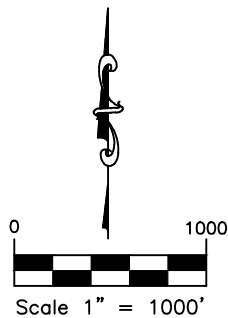
MULTI-WELL EXHIBIT HIGH PLAINS 5N65W25AF PAD

SECTION: 25
TOWNSHIP: 5N
RANGE: 65W
6TH P.M.
WELD COUNTY, CO



LEGEND

- ▣ - Found Survey Monument
- - Calculated Location
- ⊗ - Surface Hole Location (SHL)
- - Entry Point Location (EPL)
- ✕ - Bottom Hole Location (BHL)

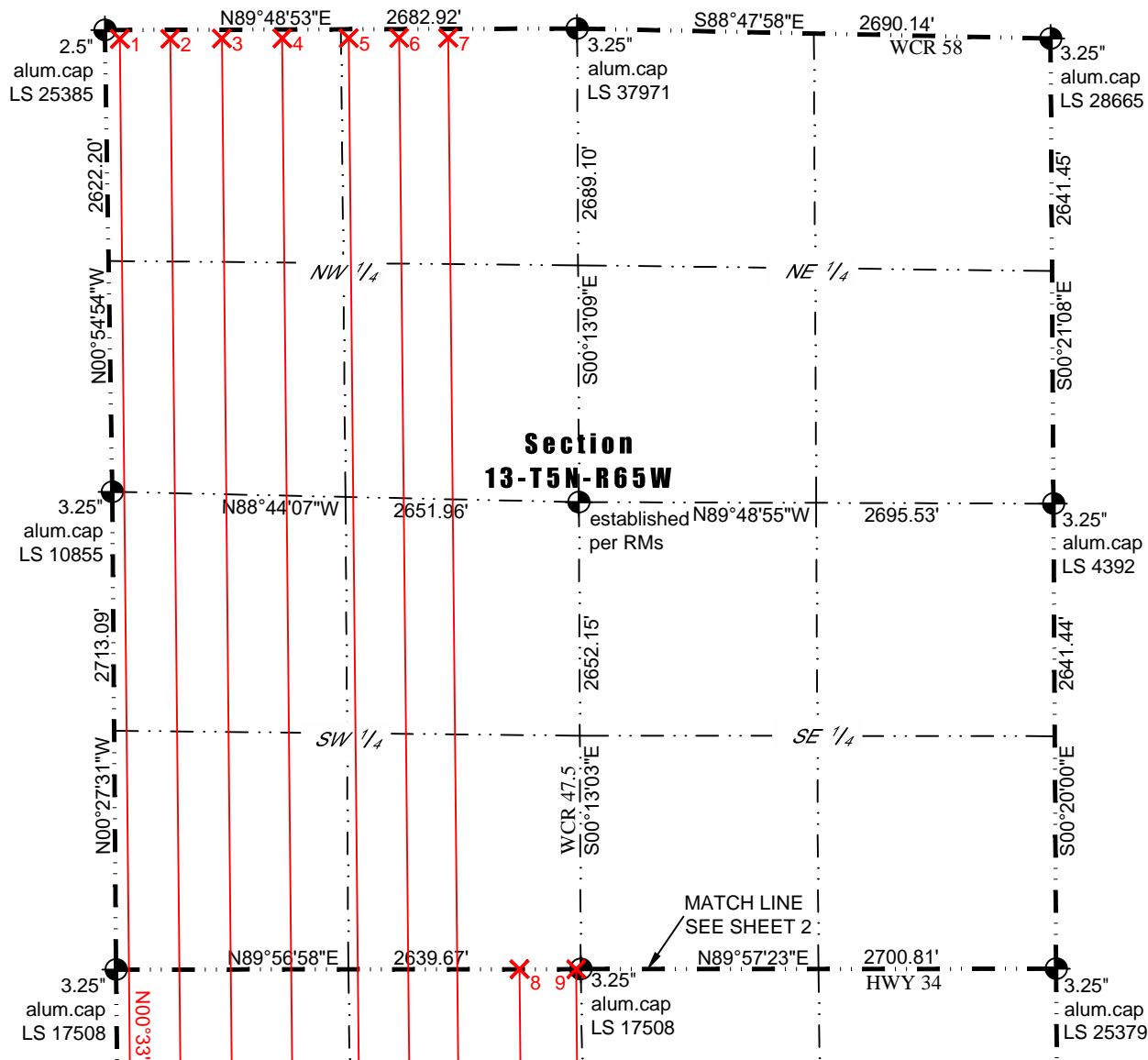




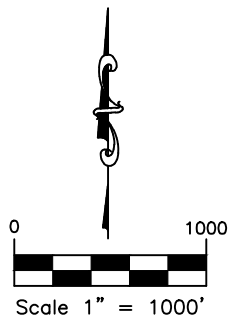
Washburn Land Surveying
www.WashburnSurveying.com
970-232-9645

MULTI-WELL EXHIBIT HIGH PLAINS 5N65W25AF PAD

SECTION: 25
TOWNSHIP: 5N
RANGE: 65W
6TH P.M.
WELD COUNTY, CO



- LEGEND**
- Found Survey Monument
 - Calculated Location
 - Surface Hole Location (SHL)
 - Entry Point Location (EPL)
 - Bottom Hole Location (BHL)





Washburn Land Surveying
www.WashburnSurveying.com
970-232-9645

MULTI-WELL EXHIBIT HIGH PLAINS 5N65W25AF PAD

SECTION: 25
TOWNSHIP: 5N
RANGE: 65W
6TH P.M.
WELD COUNTY, CO



- High Plains Disposal 25F-301
- High Plains Disposal 25F-221
- High Plains Disposal 25A-341
- High Plains Disposal 25A-241
- High Plains Disposal 25A-401
- High Plains Disposal 25A-221
- High Plains Disposal 25A-321
- High Plains Disposal 25N-241
- High Plains Disposal 25N-301



Scale 1" = 100'



Washburn Land Surveying
 www.WashburnSurveying.com
 970-232-9645

MULTI-WELL EXHIBIT HIGH PLAINS 5N65W25AF PAD

SECTION: 25
 TOWNSHIP: 5N
 RANGE: 65W
 6TH P.M.
 WELD COUNTY, CO

ID	WELL	SHL FOOTAGE	LAT	LONG
1	HIGH PLAINS 25F-301	994' FNL 749' FWL, Sec. 25	N40.374712°	W104.618326°
2	HIGH PLAINS 25F-221	1009' FNL 749' FWL, Sec. 25	N40.374671°	W104.618327°
3	HIGH PLAINS 25A-341	1024' FNL 748' FWL, Sec. 25	N40.374630°	W104.618327°
4	HIGH PLAINS25A-241	1039' FNL 748' FWL, Sec. 25	N40.374589°	W104.618328°
5	HIGH PLAINS 25A-401	1054' FNL 748' FWL, Sec. 25	N40.374548°	W104.618328°
6	HIGH PLAINS 25A-221	1069' FNL 748' FWL, Sec. 25	N40.374506°	W104.618329°
7	HIGH PLAINS 25A-321	1084' FNL 748' FWL, Sec. 25	N40.374465°	W104.618329°
8	HIGH PLAINS 25N-241	1099' FNL 747' FWL, Sec. 25	N40.374424°	W104.618330°
9	HIGH PLAINS 25N-301	1114' FNL 747' FWL, Sec. 25	N40.374383°	W104.618330°
ID	WELL	EP FOOTAGES	LAT	LONG
1	HIGH PLAINS 25F-301	2' FSL 64' FWL, Sec. 24	N40.377453°	W104.620791°
2	HIGH PLAINS 25F-221	2' FSL 350' FWL, Sec. 24	N40.377450°	W104.619764°
3	HIGH PLAINS 25A-341	2' FSL 642' FWL, Sec. 24	N40.377447°	W104.618716°
4	HIGH PLAINS25A-241	280' FSL 985' FWL, Sec. 24	N40.378206°	W104.617487°
5	HIGH PLAINS 25A-401	2' FSL 1364' FWL, Sec. 24	N40.377439°	W104.616125°
6	HIGH PLAINS 25A-221	282' FSL 1650' FWL, Sec. 24	N40.378204°	W104.615100°
7	HIGH PLAINS 25A-321	98' FNL 1929' FWL, Sec. 25	N40.377158°	W104.614096°
8	HIGH PLAINS 25N-241	241' FSL 2280' FWL, Sec. 24	N40.378085°	W104.612838°
9	HIGH PLAINS 25N-301	99' FNL 2602' FWL, Sec. 25	N40.377148°	W104.611680°
ID	WELL	BHL FOOTAGE	LAT	LONG
1	HIGH PLAINS 25F-301	85' FWL 50' FNL Sec. 13	N40.406488°	W104.620787°
2	HIGH PLAINS 25F-221	371' FWL 50' FNL Sec. 13	N40.406483°	W104.619760°
3	HIGH PLAINS 25A-341	664' FWL 50' FNL Sec. 13	N40.406478°	W104.618708°
4	HIGH PLAINS25A-241	1007' FWL 50' FNL Sec. 13	N40.406471°	W104.617476°
5	HIGH PLAINS 25A-401	1385' FWL 50' FNL Sec. 13	N40.406464°	W104.616118°
6	HIGH PLAINS 25A-221	1671' FWL 50' FNL Sec. 13	N40.406459°	W104.615091°
7	HIGH PLAINS 25A-321	1950' FWL 50' FNL Sec. 13	N40.406454°	W104.614089°
8	HIGH PLAINS 25N-241	2292' FWL 0' FNL Sec. 24	N40.391925°	W104.612826°
9	HIGH PLAINS 25N-301	2614' FWL 0' FNL Sec. 24	N40.391917°	W104.611670°