



Physical Address: 34834 Annie Cir.  
Mail to: Box 2372, Elizabeth, CO 80107  
Ph. 303-243-0037  
[www.franesurveying.com](http://www.franesurveying.com)  
Job # 17-056-Rio Lobo 1-30

Frane Surveying, in accordance with a request from Grand Mesa Operating has determined the location of Rio Lobo #1-30 to be 2474 Feet FNL, and 610 Feet FWL, (90° off Section lines) of Section 30, Township 5s, Range 53w of the 6th Principal Meridian, Washington County, Colorado.

Date: Staked on 03/15/17 drawn on 03/17/17.

**Re:** Staked by Elijah Frane

**Drawn:** Drawn by Elijah Frane

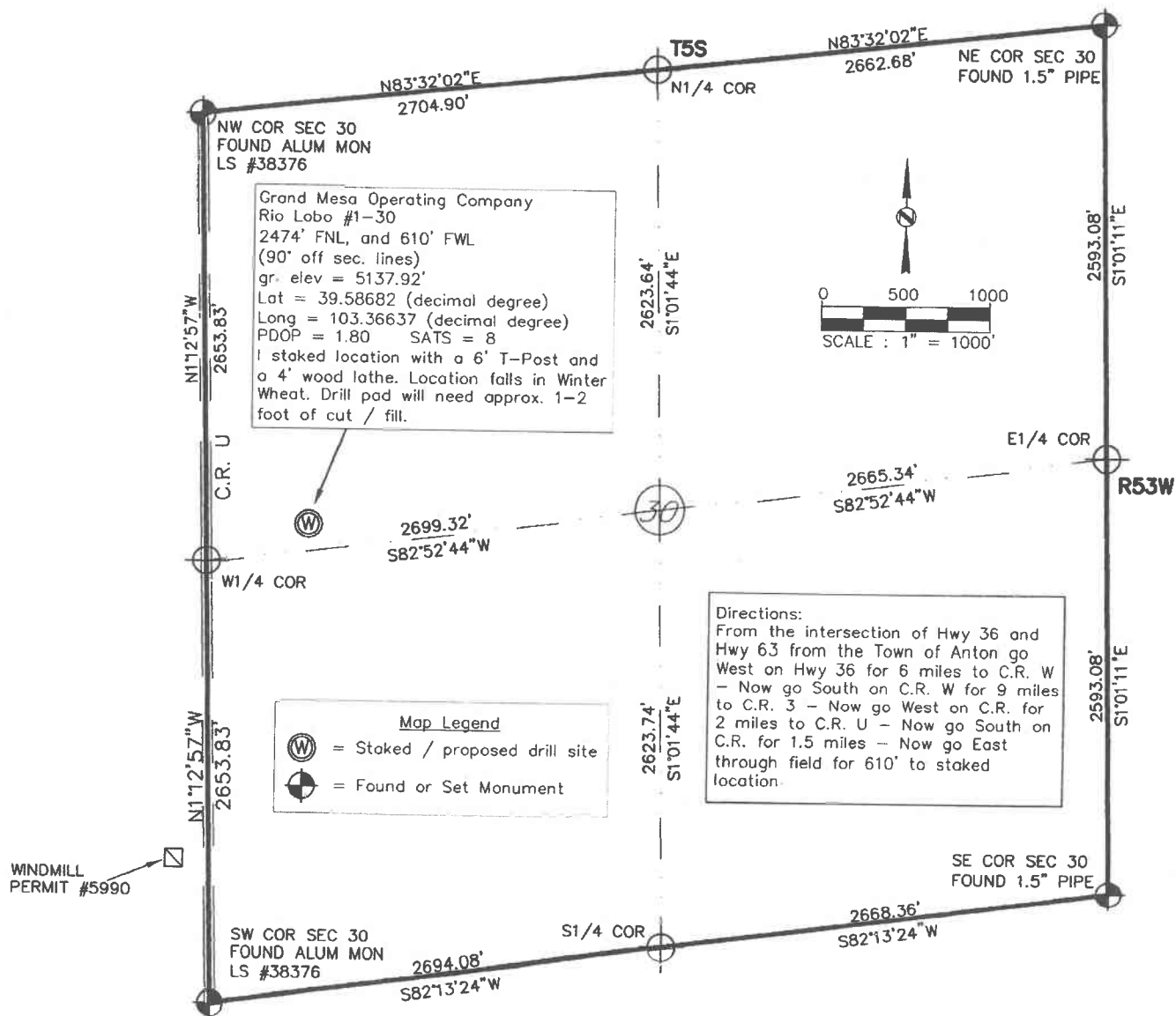
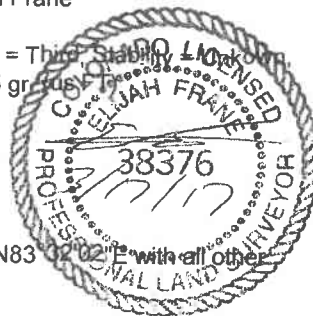
**Basis of Elevation Spot:** USGS BM = ANTON, PID = KJ0478, H-Order = Second, V-Order = Third, Stability = 1.00, P-DOP = 1.90, Sats = 8 US NAD 83 CO-C, Lat. = 39.69930, Long. = W103.21294 = 4903.75 gr. bus

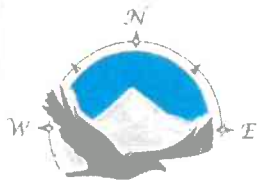
**Notes:** See location drawing for improvements within 500' of proposed well pad / head..

The ground elevation at staked location = 5137.92' gr.

This drawing does not represent a monumented survey or Land Survey Plat.

**Basis of Bearing:** Bearings were determined based on the North line of Section 30 to bear N83°02'02" E with all other bearings contained herein relative thereto.





# FRANE SURVEYING INC.

Physical Address: 34834 Annie Cir.  
Mail to: Box 2372, Elizabeth, CO 80107  
Ph. 303-243-0037  
www.franesurveying.com  
Job # 17-056-Rio Lobo 1-30

Frane Surveying, in accordance with a request from **Grand Mesa Operating** has determined the location of **Rio Lobo #1-30** to be **2474 Feet FNL**, and **610 Feet FWL**, (90° off Section lines) of Section **30**, Township **5s**, Range **53w** of the 6th Principal Meridian, **Washington County**, Colorado.

Date: Staked on 03/15/17 drawn on 03/17/17.

**Re:** Staked by Elijah Frane  
**Drawn:** Drawn by Elijah Frane

**Basis of Elevation Spot:** USGS BM = ANTON, PID = KJ0478, H-Order = Second, V-Order = Third, Stability = Unknown  
P-DOP = 1.90, Sats = 8 US NAD 83 CO-C, Lat. = 39.69930, Long. = W103.21294 = 4903.75 gr. (us-ft)

**Notes:** See location drawing for improvements within 500' of proposed well pad / head..  
The ground elevation at staked location = 5137.92' gr.  
This drawing does not represent a monumented survey or Land Survey Plat.

**Basis of Bearing:** Bearings were determined based on the North line of Section 30 to bear N83°32'02"E with all other bearings contained herein relative thereto.

