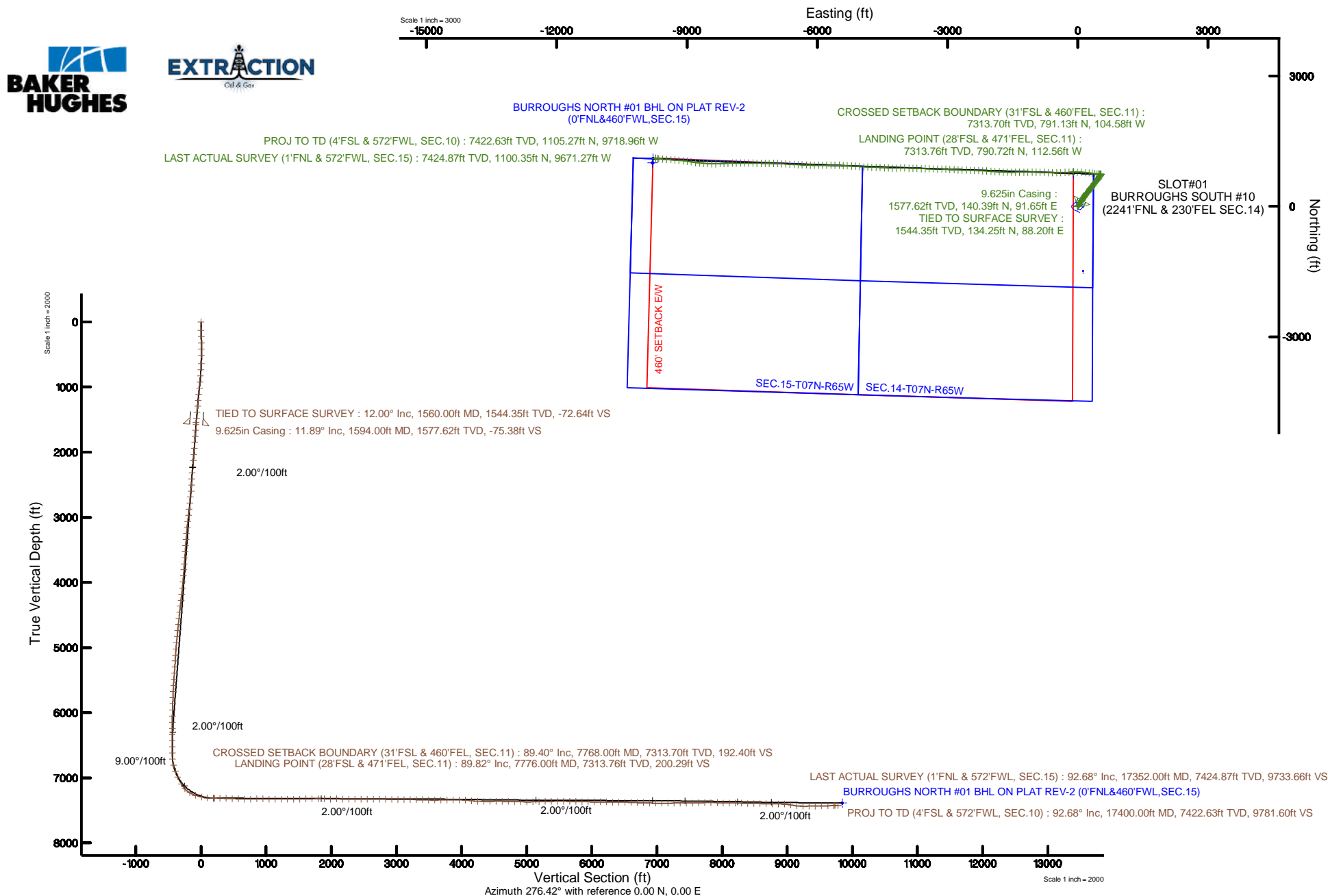


Location:	COLORADO	Slot:	SLOT#05 BURROUGHS NORTH #01 (760'FNL&355'FEL,SEC.14)
Field:	WELD COUNTY (NAD83/TRUE NORTH)	Well:	BURROUGHS NORTH #01
Facility:	SEC.14-T07N-R65W	Wellbore:	BURROUGHS NORTH #01 PWB

Plot reference wellpath is BURROUGHS NORTH #01 (REV-C-G) PWP	Grid System: NAD83 / Lambert Colorado SP, Northern Zone (501), US feet
True vertical depths are referenced to H&P 321 (RKB)	* = Wellpath was transformed from a different geodetic datum
Measured depths are referenced to H&P 321 (RKB)	North Reference: True north
H&P 321 (RKB) to Mean Sea Level: 4977 feet	Scale: True distance
Mean Sea Level to Ground level (At Slot: SLOTR05 BURROUGHS NORTH #01 (760TNL&355FEL,SEC.14)): 0 feet	Depths are in feet
Coordinates are in feet referenced to Slot	Created by: hutsader on 2017-03-24
	Database: WA_DEN_Demver_Deht





Actual Wellpath Report

BURROUGHS NORTH #01 AWP

Page 1 of 10



REFERENCE WELLPATH IDENTIFICATION

Operator	EXTRACTION OIL & GAS	Slot	SLOT#05 BURROUGHS NORTH #01 (760'FNL&355'FEL,SEC.14)
Area	COLORADO	Well	BURROUGHS NORTH #01
Field	WELD COUNTY (NAD83/TRUE NORTH)	Wellbore	BURROUGHS NORTH #01 AWP
Facility	SEC.14-T07N-R65W		

REPORT SETUP INFORMATION

Projection System	NAD83 / Lambert Colorado SP, Northern Zone (501), US feet	Software System	WellArchitect® 5.0
North Reference	True	User	Hutaedr
Scale	0.999973	Report Generated	24/Mar/2017 at 15:36
Convergence at slot	0.57° East	Database/Source file	WA_DEN_Denver_Defn/BURROUGHS_NORTH_#01_AWP.xml

WELLPATH LOCATION

	Local coordinates		Grid coordinates		Geographic coordinates	
	North[ft]	East[ft]	Easting[US ft]	Northing[US ft]	Latitude	Longitude
Slot Location	1485.63	-118.06	3244017.24	1454768.13	40°34'42.310"N	104°37'17.480"W
Facility Reference Pt			3244150.01	1453283.79	40°34'27.630"N	104°37'15.950"W
Field Reference Pt			3185481.27	1419166.81	40°28'55.560"N	104°49'59.556"W

WELLPATH DATUM

Calculation method	Minimum curvature	H&P 321 (RKB) to Facility Vertical Datum	4977.00ft
Horizontal Reference Pt	Slot	H&P 321 (RKB) to Mean Sea Level	4977.00ft
Vertical Reference Pt	H&P 321 (RKB)	H&P 321 (RKB) to Ground Level at Slot (SLOT#05 BURROUGHS NORTH #01 (760'FNL&355'FEL,SEC.14))	4977.00ft
MD Reference Pt	H&P 321 (RKB)	Section Origin	N 0.00, E 0.00 ft
Field Vertical Reference	Mean Sea Level	Section Azimuth	276.42°



Actual Wellpath Report

BURROUGHS NORTH #01 AWP

Page 2 of 10



REFERENCE WELLPATH IDENTIFICATION			
Operator	EXTRACTION OIL & GAS	Slot	SLOT#05 BURROUGHS NORTH #01 (760'FNL&355'FEL,SEC.14)
Area	COLORADO	Well	BURROUGHS NORTH #01
Field	WELD COUNTY (NAD83/TRUE NORTH)	Wellbore	BURROUGHS NORTH #01 AWB
Facility	SEC.14-T07N-R65W		

WELLPATH DATA (186 stations)										
MD [ft]	Inclination [°]	Azimuth [°]	TVD [ft]	Vert Sect [ft]	North [ft]	East [ft]	Latitude	Longitude	DLS [°/100ft]	Comments
0.00	0.000	273.100	0.00	0.00	0.00	0.00	40°34'42.310"N	104°37'17.480"W	0.00	
131.00	1.100	273.100	130.99	1.26	0.07	-1.26	40°34'42.311"N	104°37'17.496"W	0.84	
226.00	1.600	278.600	225.97	3.49	0.32	-3.48	40°34'42.313"N	104°37'17.525"W	0.54	
321.00	1.300	293.300	320.94	5.85	0.94	-5.78	40°34'42.319"N	104°37'17.555"W	0.50	
417.00	0.500	31.200	416.93	6.71	1.73	-6.56	40°34'42.327"N	104°37'17.565"W	1.52	
512.00	0.700	77.900	511.92	5.99	2.21	-5.78	40°34'42.332"N	104°37'17.555"W	0.54	
639.00	2.500	49.700	638.87	3.36	4.16	-2.91	40°34'42.351"N	104°37'17.518"W	1.51	
734.00	4.800	50.700	733.67	-0.84	8.02	1.75	40°34'42.389"N	104°37'17.457"W	2.42	
829.00	6.800	47.100	828.18	-7.28	14.36	8.94	40°34'42.452"N	104°37'17.364"W	2.14	
925.00	8.900	46.400	923.27	-15.76	23.36	18.49	40°34'42.541"N	104°37'17.240"W	2.19	
1020.00	10.600	38.800	1016.90	-25.16	35.23	29.28	40°34'42.658"N	104°37'17.100"W	2.24	
1115.00	11.500	35.800	1110.14	-34.49	49.73	40.30	40°34'42.801"N	104°37'16.958"W	1.12	
1210.00	12.200	33.300	1203.12	-43.67	65.80	51.35	40°34'42.960"N	104°37'16.815"W	0.91	
1305.00	13.100	27.800	1295.81	-52.13	83.71	61.88	40°34'43.137"N	104°37'16.678"W	1.58	
1401.00	13.400	25.600	1389.26	-59.75	103.37	71.76	40°34'43.331"N	104°37'16.550"W	0.61	
1496.00	12.600	29.000	1481.82	-67.35	122.36	81.54	40°34'43.519"N	104°37'16.423"W	1.16	
1560.00	12.000	29.500	1544.35	-72.64	134.25	88.20	40°34'43.637"N	104°37'16.337"W	0.95	TIED TO SURFACE SURVEY
1680.00	11.600	28.220	1661.82	-82.01	155.74	100.05	40°34'43.849"N	104°37'16.183"W	0.40	
1775.00	10.550	28.310	1755.05	-88.80	171.81	108.69	40°34'44.008"N	104°37'16.071"W	1.11	
1869.00	9.100	37.530	1847.67	-95.85	185.29	117.30	40°34'44.141"N	104°37'15.960"W	2.27	
1964.00	8.830	37.530	1941.51	-103.50	197.03	126.32	40°34'44.257"N	104°37'15.843"W	0.28	
2058.00	8.090	38.320	2034.49	-110.72	207.94	134.82	40°34'44.365"N	104°37'15.733"W	0.80	
2153.00	9.710	38.410	2128.34	-118.49	219.46	143.94	40°34'44.479"N	104°37'15.615"W	1.71	
2247.00	9.360	36.480	2221.04	-126.52	231.82	153.41	40°34'44.601"N	104°37'15.492"W	0.50	
2342.00	8.880	34.550	2314.84	-133.85	244.07	162.16	40°34'44.722"N	104°37'15.378"W	0.60	
2437.00	8.090	30.240	2408.80	-140.01	255.88	169.69	40°34'44.838"N	104°37'15.281"W	1.07	
2531.00	8.350	34.020	2501.84	-145.84	267.25	176.84	40°34'44.951"N	104°37'15.188"W	0.64	
2626.00	9.760	36.650	2595.65	-153.09	279.43	185.50	40°34'45.071"N	104°37'15.076"W	1.55	
2721.00	9.580	33.320	2689.30	-160.72	292.50	194.65	40°34'45.200"N	104°37'14.957"W	0.62	
2815.00	11.430	43.250	2781.73	-169.84	305.82	205.33	40°34'45.332"N	104°37'14.819"W	2.75	



Actual Wellpath Report

BURROUGHS NORTH #01 AWP

Page 3 of 10



REFERENCE WELLPATH IDENTIFICATION			
Operator	EXTRACTION OIL & GAS	Slot	SLOT#05 BURROUGHS NORTH #01 (760'FNL&355'FEL,SEC.14)
Area	COLORADO	Well	BURROUGHS NORTH #01
Field	WELD COUNTY (NAD83/TRUE NORTH)	Wellbore	BURROUGHS NORTH #01 AWB
Facility	SEC.14-T07N-R65W		

WELLPATH DATA (186 stations)										
MD [ft]	Inclination [°]	Azimuth [°]	TVD [ft]	Vert Sect [ft]	North [ft]	East [ft]	Latitude	Longitude	DLS [°/100ft]	Comments
2910.00	11.120	45.440	2874.90	-181.25	319.11	218.31	40°34'45.463"N	104°37'14.651"W	0.56	
3004.00	10.770	44.830	2967.19	-192.42	331.70	230.96	40°34'45.588"N	104°37'14.487"W	0.39	
3099.00	10.810	44.570	3060.51	-203.43	344.34	243.47	40°34'45.712"N	104°37'14.325"W	0.07	
3193.00	10.330	34.810	3152.92	-212.89	357.54	254.47	40°34'45.843"N	104°37'14.182"W	1.97	
3288.00	9.930	34.630	3246.44	-220.81	371.27	263.99	40°34'45.979"N	104°37'14.059"W	0.42	
3382.00	9.360	33.050	3339.11	-228.07	384.35	272.76	40°34'46.108"N	104°37'13.945"W	0.67	
3477.00	9.100	32.350	3432.88	-234.81	397.17	280.99	40°34'46.235"N	104°37'13.838"W	0.30	
3572.00	8.480	31.120	3526.76	-241.03	409.51	288.63	40°34'46.357"N	104°37'13.739"W	0.68	
3666.00	7.600	42.460	3619.84	-247.58	420.03	296.41	40°34'46.460"N	104°37'13.639"W	1.93	
3761.00	8.000	43.860	3713.96	-255.29	429.43	305.23	40°34'46.553"N	104°37'13.524"W	0.47	
3855.00	7.910	36.740	3807.06	-262.54	439.33	313.64	40°34'46.651"N	104°37'13.415"W	1.05	
3950.00	8.830	34.720	3901.05	-269.29	450.56	321.70	40°34'46.762"N	104°37'13.311"W	1.02	
4044.00	9.400	39.640	3993.86	-276.92	462.41	330.71	40°34'46.879"N	104°37'13.194"W	1.03	
4139.00	12.440	37.620	4087.13	-286.47	476.49	341.90	40°34'47.018"N	104°37'13.049"W	3.22	
4234.00	12.570	36.480	4179.88	-296.95	492.91	354.30	40°34'47.181"N	104°37'12.888"W	0.29	
4328.00	12.960	35.950	4271.56	-307.27	509.66	366.57	40°34'47.346"N	104°37'12.729"W	0.43	
4423.00	13.140	34.460	4364.10	-317.59	527.19	378.93	40°34'47.519"N	104°37'12.569"W	0.40	
4518.00	12.480	35.420	4456.74	-327.65	544.46	390.99	40°34'47.690"N	104°37'12.413"W	0.73	
4614.00	11.560	37.620	4550.63	-337.66	560.53	402.87	40°34'47.849"N	104°37'12.259"W	1.07	
4709.00	10.770	40.520	4643.83	-347.57	574.82	414.45	40°34'47.990"N	104°37'12.109"W	1.02	
4804.00	9.620	43.420	4737.33	-357.32	587.33	425.67	40°34'48.114"N	104°37'11.963"W	1.33	
4899.00	8.970	43.950	4831.09	-366.61	598.43	436.27	40°34'48.223"N	104°37'11.826"W	0.69	
4994.00	8.130	46.760	4925.03	-375.47	608.36	446.30	40°34'48.321"N	104°37'11.696"W	0.99	
5089.00	8.390	42.460	5019.04	-383.89	618.08	455.88	40°34'48.417"N	104°37'11.572"W	0.71	
5184.00	8.130	31.650	5113.06	-390.83	628.91	464.08	40°34'48.524"N	104°37'11.466"W	1.65	
5279.00	8.970	25.840	5207.01	-396.16	641.30	470.83	40°34'48.647"N	104°37'11.378"W	1.27	
5374.00	10.460	30.770	5300.65	-402.18	655.37	478.47	40°34'48.786"N	104°37'11.279"W	1.79	
5469.00	8.220	35.070	5394.38	-408.99	668.34	486.79	40°34'48.914"N	104°37'11.171"W	2.47	
5563.00	8.260	34.110	5487.41	-415.35	679.43	494.44	40°34'49.024"N	104°37'11.072"W	0.15	
5658.00	9.010	32.350	5581.33	-421.77	691.37	502.24	40°34'49.142"N	104°37'10.971"W	0.84	



Actual Wellpath Report

BURROUGHS NORTH #01 AWP

Page 4 of 10



REFERENCE WELLPATH IDENTIFICATION			
Operator	EXTRACTION OIL & GAS	Slot	SLOT#05 BURROUGHS NORTH #01 (760'FNL&355'FEL, SEC.14)
Area	COLORADO	Well	BURROUGHS NORTH #01
Field	WELD COUNTY (NAD83/TRUE NORTH)	Wellbore	BURROUGHS NORTH #01 AWB
Facility	SEC.14-T07N-R65W		

WELLPATH DATA (186 stations) † = interpolated/extrapolated station										
MD [ft]	Inclination [°]	Azimuth [°]	TVD [ft]	Vert Sect [ft]	North [ft]	East [ft]	Latitude	Longitude	DLS [°/100ft]	Comments
5752.00	8.130	23.380	5674.29	-426.93	703.69	508.82	40°34'49.263"N	104°37'10.886"W	1.70	
5847.00	6.860	23.380	5768.47	-430.55	715.06	513.74	40°34'49.376"N	104°37'10.822"W	1.34	
5942.00	5.410	29.800	5862.93	-433.98	724.16	518.21	40°34'49.466"N	104°37'10.764"W	1.69	
6037.00	4.310	33.490	5957.59	-437.38	731.02	522.41	40°34'49.533"N	104°37'10.710"W	1.20	
6131.00	2.900	28.390	6051.40	-439.88	736.06	525.49	40°34'49.583"N	104°37'10.670"W	1.54	
6226.00	2.590	26.280	6146.29	-441.51	740.10	527.58	40°34'49.623"N	104°37'10.643"W	0.34	
6320.00	0.220	121.210	6240.26	-442.39	741.91	528.68	40°34'49.641"N	104°37'10.628"W	2.79	
6415.00	0.350	170.070	6335.26	-442.64	741.53	528.88	40°34'49.637"N	104°37'10.626"W	0.28	
6510.00	0.130	251.200	6430.26	-442.62	741.21	528.83	40°34'49.634"N	104°37'10.626"W	0.37	
6604.00	0.310	223.690	6524.25	-442.37	740.99	528.56	40°34'49.632"N	104°37'10.630"W	0.22	
6699.00	0.660	190.380	6619.25	-442.18	740.26	528.28	40°34'49.625"N	104°37'10.633"W	0.46	
6794.00	7.080	276.600	6714.01	-436.28	740.40	522.36	40°34'49.626"N	104°37'10.710"W	7.44	
6889.00	13.580	275.450	6807.42	-419.25	742.13	505.42	40°34'49.643"N	104°37'10.930"W	6.85	
6984.00	20.480	272.550	6898.20	-391.49	743.93	477.68	40°34'49.661"N	104°37'11.289"W	7.32	
7078.00	24.740	275.540	6984.96	-355.40	746.57	441.66	40°34'49.687"N	104°37'11.756"W	4.69	
7198.00	28.520	278.350	7092.21	-301.63	753.15	388.30	40°34'49.752"N	104°37'12.448"W	3.32	
7293.00	43.150	280.380	7169.02	-246.26	762.35	333.61	40°34'49.843"N	104°37'13.156"W	15.45	
7388.00	58.400	274.840	7228.95	-172.94	771.68	260.88	40°34'49.935"N	104°37'14.099"W	16.67	
7482.00	72.550	277.390	7267.87	-87.65	780.87	176.08	40°34'50.026"N	104°37'15.198"W	15.25	
7578.00	76.900	272.030	7293.17	4.86	788.42	83.84	40°34'50.101"N	104°37'16.393"W	7.04	
7673.00	84.420	272.030	7308.58	98.26	791.74	-9.77	40°34'50.133"N	104°37'17.607"W	7.92	
7768.00†	89.400	267.242	7313.70	192.40	791.13	-104.58	40°34'50.127"N	104°37'18.835"W	7.27	CROSSED SETBACK BOUNDARY (31'FSL & 460'FEL, SEC.11)
7776.00	89.820	266.840	7313.76	200.29	790.72	-112.56	40°34'50.123"N	104°37'18.939"W	7.27	LANDING POINT (28'FSL & 471'FEL, SEC.11)
7867.00	90.400	267.460	7313.58	290.10	786.19	-203.45	40°34'50.079"N	104°37'20.117"W	0.93	
7962.00	87.980	268.070	7314.93	384.00	782.49	-298.36	40°34'50.042"N	104°37'21.347"W	2.63	
8057.00	87.580	268.330	7318.61	477.95	779.51	-393.24	40°34'50.013"N	104°37'22.576"W	0.50	
8151.00	87.800	268.770	7322.39	570.99	777.13	-487.14	40°34'49.989"N	104°37'23.793"W	0.52	
8246.00	87.800	271.410	7326.04	665.33	777.28	-582.06	40°34'49.990"N	104°37'25.024"W	2.78	
8341.00	91.630	273.260	7326.51	760.07	781.15	-676.96	40°34'50.029"N	104°37'26.253"W	4.48	
8436.00	92.110	272.730	7323.41	854.85	786.11	-771.78	40°34'50.078"N	104°37'27.482"W	0.75	



Actual Wellpath Report

BURROUGHS NORTH #01 AWP

Page 5 of 10



REFERENCE WELLPATH IDENTIFICATION			
Operator	EXTRACTION OIL & GAS	Slot	SLOT#05 BURROUGHS NORTH #01 (760'FNL&355'FEL,SEC.14)
Area	COLORADO	Well	BURROUGHS NORTH #01
Field	WELD COUNTY (NAD83/TRUE NORTH)	Wellbore	BURROUGHS NORTH #01 AWB
Facility	SEC.14-T07N-R65W		

WELLPATH DATA (186 stations)										
MD [ft]	Inclination [°]	Azimuth [°]	TVD [ft]	Vert Sect [ft]	North [ft]	East [ft]	Latitude	Longitude	DLS [°/100ft]	Comments
8531.00	88.150	270.970	7323.20	949.52	789.17	-866.70	40°34'50.108"N	104°37'28.713"W	4.56	
8626.00	89.120	270.530	7325.46	1044.03	790.42	-961.67	40°34'50.120"N	104°37'29.943"W	1.12	
8720.00	89.560	270.180	7326.55	1137.50	791.00	-1055.66	40°34'50.126"N	104°37'31.161"W	0.60	
8815.00	90.130	269.920	7326.80	1231.91	791.08	-1150.66	40°34'50.127"N	104°37'32.393"W	0.66	
8909.00	89.960	269.740	7326.73	1325.29	790.80	-1244.66	40°34'50.124"N	104°37'33.611"W	0.26	
9004.00	90.660	268.690	7326.21	1419.53	789.50	-1339.64	40°34'50.111"N	104°37'34.842"W	1.33	
9098.00	91.450	268.600	7324.48	1512.65	787.28	-1433.60	40°34'50.089"N	104°37'36.060"W	0.85	
9193.00	90.700	270.000	7322.70	1606.90	786.12	-1528.57	40°34'50.077"N	104°37'37.290"W	1.67	
9288.00	91.140	270.880	7321.18	1701.37	786.85	-1623.56	40°34'50.085"N	104°37'38.521"W	1.04	
9383.00	91.230	272.470	7319.21	1796.02	789.63	-1718.49	40°34'50.112"N	104°37'39.752"W	1.68	
9478.00	85.560	274.220	7321.87	1890.80	795.16	-1813.25	40°34'50.167"N	104°37'40.980"W	6.25	
9572.00	90.750	273.080	7324.90	1984.61	801.14	-1906.98	40°34'50.226"N	104°37'42.195"W	5.65	
9667.00	90.440	274.750	7323.91	2079.51	807.63	-2001.75	40°34'50.290"N	104°37'43.423"W	1.79	
9762.00	89.210	274.660	7324.20	2174.47	815.42	-2096.43	40°34'50.367"N	104°37'44.650"W	1.30	
9856.00	89.820	272.820	7325.00	2268.36	821.55	-2190.22	40°34'50.427"N	104°37'45.865"W	2.06	
9950.00	89.780	272.030	7325.32	2362.13	825.53	-2284.13	40°34'50.466"N	104°37'47.083"W	0.84	
10045.00	89.820	271.760	7325.66	2456.83	828.67	-2379.08	40°34'50.497"N	104°37'48.313"W	0.29	
10140.00	90.220	271.320	7325.62	2551.49	831.22	-2474.05	40°34'50.522"N	104°37'49.544"W	0.63	
10235.00	90.880	270.970	7324.71	2646.08	833.12	-2569.02	40°34'50.541"N	104°37'50.775"W	0.79	
10329.00	89.300	272.200	7324.56	2739.74	835.72	-2662.98	40°34'50.567"N	104°37'51.992"W	2.13	
10424.00	87.230	273.870	7327.44	2834.52	840.74	-2757.80	40°34'50.616"N	104°37'53.221"W	2.80	
10518.00	88.680	273.170	7330.79	2928.34	846.51	-2851.56	40°34'50.673"N	104°37'54.436"W	1.71	
10613.00	90.440	272.730	7331.52	3023.16	851.40	-2946.42	40°34'50.721"N	104°37'55.666"W	1.91	
10707.00	88.900	271.940	7332.06	3116.91	855.23	-3040.34	40°34'50.759"N	104°37'56.883"W	1.84	
10802.00	89.520	271.500	7333.37	3211.58	858.08	-3135.29	40°34'50.787"N	104°37'58.114"W	0.80	
10897.00	89.210	271.670	7334.43	3306.24	860.71	-3230.25	40°34'50.813"N	104°37'59.344"W	0.37	
10992.00	87.230	270.710	7337.38	3400.79	862.68	-3325.17	40°34'50.832"N	104°38'00.575"W	2.32	
11086.00	88.770	271.760	7340.66	3494.35	864.71	-3419.09	40°34'50.852"N	104°38'01.792"W	1.98	
11181.00	90.440	272.380	7341.31	3589.07	868.14	-3514.02	40°34'50.886"N	104°38'03.022"W	1.88	
11276.00	90.260	272.380	7340.73	3683.83	872.08	-3608.94	40°34'50.925"N	104°38'04.252"W	0.19	



Actual Wellpath Report

BURROUGHS NORTH #01 AWP

Page 6 of 10



REFERENCE WELLPATH IDENTIFICATION			
Operator	EXTRACTION OIL & GAS	Slot	SLOT#05 BURROUGHS NORTH #01 (760'FNL&355'FEL,SEC.14)
Area	COLORADO	Well	BURROUGHS NORTH #01
Field	WELD COUNTY (NAD83/TRUE NORTH)	Wellbore	BURROUGHS NORTH #01 AWB
Facility	SEC.14-T07N-R65W		

WELLPATH DATA (186 stations)										
MD [ft]	Inclination [°]	Azimuth [°]	TVD [ft]	Vert Sect [ft]	North [ft]	East [ft]	Latitude	Longitude	DLS [°/100ft]	Comments
11370.00	90.840	272.470	7339.83	3777.59	876.06	-3702.85	40°34'50.964"N	104°38'05.469"W	0.62	
11465.00	89.650	271.850	7339.42	3872.33	879.64	-3797.78	40°34'50.999"N	104°38'06.700"W	1.41	
11559.00	90.040	271.500	7339.68	3966.01	882.39	-3891.74	40°34'51.026"N	104°38'07.917"W	0.56	
11654.00	85.870	270.530	7343.07	4060.50	884.07	-3986.64	40°34'51.043"N	104°38'09.147"W	4.51	
11749.00	83.890	268.770	7351.55	4154.45	883.49	-4081.25	40°34'51.037"N	104°38'10.373"W	2.78	
11843.00	87.280	269.830	7358.78	4247.44	882.35	-4174.95	40°34'51.025"N	104°38'11.588"W	3.78	
11937.00	89.690	270.360	7361.27	4340.83	882.51	-4268.91	40°34'51.027"N	104°38'12.806"W	2.63	
12032.00	90.090	273.170	7361.45	4435.50	885.43	-4363.86	40°34'51.055"N	104°38'14.036"W	2.99	
12126.00	90.700	273.870	7360.80	4529.38	891.20	-4457.67	40°34'51.112"N	104°38'15.252"W	0.99	
12221.00	89.170	272.550	7360.91	4624.22	896.52	-4552.52	40°34'51.165"N	104°38'16.481"W	2.13	
12315.00	87.890	271.320	7363.32	4717.90	899.70	-4646.43	40°34'51.196"N	104°38'17.698"W	1.89	
12410.00	89.300	272.030	7365.65	4812.54	902.47	-4741.36	40°34'51.223"N	104°38'18.929"W	1.66	
12504.00	88.950	272.200	7367.08	4906.27	905.94	-4835.29	40°34'51.257"N	104°38'20.146"W	0.41	
12599.00	89.780	272.990	7368.14	5001.05	910.24	-4930.18	40°34'51.300"N	104°38'21.376"W	1.21	
12694.00	91.010	274.570	7367.48	5095.94	916.50	-5024.97	40°34'51.361"N	104°38'22.604"W	2.11	
12788.00	91.320	274.220	7365.57	5189.86	923.71	-5118.67	40°34'51.432"N	104°38'23.819"W	0.50	
12883.00	91.270	273.260	7363.42	5284.73	929.90	-5213.44	40°34'51.493"N	104°38'25.047"W	1.01	
12977.00	90.880	272.990	7361.66	5378.56	935.03	-5307.29	40°34'51.544"N	104°38'26.263"W	0.50	
13072.00	91.270	273.430	7359.88	5473.39	940.34	-5402.12	40°34'51.596"N	104°38'27.492"W	0.62	
13167.00	88.240	270.800	7360.29	5568.11	943.85	-5497.04	40°34'51.630"N	104°38'28.722"W	4.22	
13262.00	89.960	270.180	7361.78	5662.58	944.66	-5592.02	40°34'51.638"N	104°38'29.953"W	1.92	
13356.00	88.590	269.480	7362.97	5755.95	944.38	-5686.01	40°34'51.635"N	104°38'31.171"W	1.64	
13451.00	89.030	269.570	7364.94	5850.24	943.60	-5780.98	40°34'51.627"N	104°38'32.402"W	0.47	
13546.00	88.420	271.150	7367.05	5944.68	944.19	-5875.95	40°34'51.633"N	104°38'33.633"W	1.78	
13639.00	88.990	270.800	7369.16	6037.24	945.77	-5968.91	40°34'51.648"N	104°38'34.838"W	0.72	
13734.00	89.560	271.060	7370.36	6131.80	947.32	-6063.89	40°34'51.663"N	104°38'36.069"W	0.66	
13829.00	90.040	271.940	7370.69	6226.44	949.80	-6158.86	40°34'51.688"N	104°38'37.300"W	1.06	
13924.00	88.550	272.380	7371.86	6321.17	953.38	-6253.78	40°34'51.723"N	104°38'38.530"W	1.64	
14018.00	89.340	272.470	7373.59	6414.93	957.36	-6347.68	40°34'51.762"N	104°38'39.747"W	0.85	
14113.00	89.910	272.820	7374.21	6509.72	961.74	-6442.58	40°34'51.805"N	104°38'40.977"W	0.70	



Actual Wellpath Report

BURROUGHS NORTH #01 AWP

Page 7 of 10



REFERENCE WELLPATH IDENTIFICATION			
Operator	EXTRACTION OIL & GAS	Slot	SLOT#05 BURROUGHS NORTH #01 (760'FNL&355'FEL,SEC.14)
Area	COLORADO	Well	BURROUGHS NORTH #01
Field	WELD COUNTY (NAD83/TRUE NORTH)	Wellbore	BURROUGHS NORTH #01 AWB
Facility	SEC.14-T07N-R65W		

WELLPATH DATA (186 stations)										
MD [ft]	Inclination [°]	Azimuth [°]	TVD [ft]	Vert Sect [ft]	North [ft]	East [ft]	Latitude	Longitude	DLS [°/100ft]	Comments
14208.00	87.190	272.990	7376.61	6604.50	966.56	-6537.42	40°34'51.852"N	104°38'42.206"W	2.87	
14303.00	87.630	273.080	7380.91	6699.24	971.58	-6632.19	40°34'51.902"N	104°38'43.434"W	0.47	
14397.00	88.200	272.990	7384.33	6793.01	976.55	-6725.99	40°34'51.951"N	104°38'44.650"W	0.61	
14492.00	88.290	273.170	7387.24	6887.80	981.66	-6820.81	40°34'52.001"N	104°38'45.879"W	0.21	
14587.00	89.470	270.710	7389.09	6982.49	984.87	-6915.73	40°34'52.032"N	104°38'47.109"W	2.87	
14682.00	90.440	271.320	7389.17	7077.06	986.55	-7010.71	40°34'52.049"N	104°38'48.340"W	1.21	
14777.00	90.350	271.500	7388.51	7171.70	988.89	-7105.68	40°34'52.071"N	104°38'49.571"W	0.21	
14871.00	90.310	271.060	7387.97	7265.32	990.99	-7199.66	40°34'52.092"N	104°38'50.789"W	0.47	
14966.00	90.260	270.710	7387.50	7359.87	992.46	-7294.64	40°34'52.106"N	104°38'52.020"W	0.37	
15060.00	90.400	270.800	7386.96	7453.41	993.70	-7388.63	40°34'52.118"N	104°38'53.238"W	0.18	
15155.00	91.230	270.360	7385.61	7547.91	994.66	-7483.62	40°34'52.127"N	104°38'54.469"W	0.99	
15250.00	91.580	270.620	7383.28	7642.37	995.47	-7578.58	40°34'52.135"N	104°38'55.700"W	0.46	
15344.00	91.230	271.940	7380.97	7735.96	997.57	-7672.53	40°34'52.156"N	104°38'56.917"W	1.45	
15440.00	90.180	269.480	7379.79	7831.47	998.76	-7768.51	40°34'52.167"N	104°38'58.161"W	2.79	
15535.00	87.890	269.040	7381.39	7925.71	997.53	-7863.48	40°34'52.155"N	104°38'59.392"W	2.45	
15630.00	87.540	267.980	7385.18	8019.73	995.06	-7958.37	40°34'52.130"N	104°39'00.622"W	1.17	
15724.00	89.960	268.250	7387.23	8112.71	991.97	-8052.29	40°34'52.099"N	104°39'01.839"W	2.59	
15819.00	90.400	267.100	7386.93	8206.61	988.12	-8147.21	40°34'52.061"N	104°39'03.069"W	1.30	
15914.00	87.720	267.720	7388.49	8300.41	983.83	-8242.09	40°34'52.018"N	104°39'04.299"W	2.90	
16009.00	88.420	268.860	7391.69	8394.40	980.99	-8336.99	40°34'51.990"N	104°39'05.529"W	1.41	
16104.00	90.350	272.900	7392.71	8488.93	982.45	-8431.95	40°34'52.004"N	104°39'06.759"W	4.71	
16198.00	87.890	272.730	7394.15	8582.72	987.07	-8525.82	40°34'52.049"N	104°39'07.976"W	2.62	
16293.00	88.200	274.490	7397.39	8677.55	993.05	-8620.57	40°34'52.108"N	104°39'09.204"W	1.88	
16387.00	89.520	275.630	7399.26	8771.50	1001.34	-8714.18	40°34'52.189"N	104°39'10.417"W	1.86	
16482.00	89.250	276.680	7400.28	8866.49	1011.52	-8808.63	40°34'52.290"N	104°39'11.641"W	1.14	
16577.00	87.010	279.410	7403.38	8961.39	1024.81	-8902.63	40°34'52.421"N	104°39'12.860"W	3.72	
16672.00	78.880	279.060	7415.04	9055.48	1039.93	-8995.61	40°34'52.570"N	104°39'14.065"W	8.57	
16767.00	83.500	275.890	7429.59	9149.30	1052.12	-9088.66	40°34'52.690"N	104°39'15.271"W	5.88	
16862.00	89.520	274.400	7435.37	9244.06	1060.61	-9183.05	40°34'52.773"N	104°39'16.494"W	6.53	
16956.00	91.140	274.220	7434.83	9337.99	1067.68	-9276.78	40°34'52.843"N	104°39'17.709"W	1.73	



Actual Wellpath Report

BURROUGHS NORTH #01 AWP

Page 8 of 10



REFERENCE WELLPATH IDENTIFICATION

Operator	EXTRACTION OIL & GAS	Slot	SLOT#05 BURROUGHS NORTH #01 (760'FNL&355'FEL,SEC.14)
Area	COLORADO	Well	BURROUGHS NORTH #01
Field	WELD COUNTY (NAD83/TRUE NORTH)	Wellbore	BURROUGHS NORTH #01 AWB
Facility	SEC.14-T07N-R65W		

WELLPATH DATA (186 stations)

MD [ft]	Inclination [°]	Azimuth [°]	TVD [ft]	Vert Sect [ft]	North [ft]	East [ft]	Latitude	Longitude	DLS [°/100ft]	Comments
17051.00	90.970	274.140	7433.08	9432.90	1074.60	-9371.51	40°34'52.911"N	104°39'18.937"W	0.20	
17145.00	90.880	274.490	7431.56	9526.82	1081.67	-9465.23	40°34'52.980"N	104°39'20.151"W	0.38	
17240.00	91.850	275.190	7429.30	9621.76	1089.69	-9559.87	40°34'53.059"N	104°39'21.378"W	1.26	
17334.00	92.550	275.630	7425.69	9715.68	1098.54	-9653.38	40°34'53.146"N	104°39'22.590"W	0.88	
17352.00	92.680	275.890	7424.87	9733.66	1100.35	-9671.27	40°34'53.164"N	104°39'22.822"W	1.61	LAST ACTUAL SURVEY (1'FNL & 572'FWL, SEC.15)
17400.00	92.680	275.890	7422.63	9781.60	1105.27	-9718.96	40°34'53.213"N	104°39'23.440"W	0.00	PROJ TO TD (4'FSL & 572'FWL, SEC.10)

HOLE & CASING SECTIONS - Ref Wellbore: BURROUGHS NORTH #01 AWB Ref Wellpath: BURROUGHS NORTH #01 AWP

String/Diameter	Start MD [ft]	End MD [ft]	Interval [ft]	Start TVD [ft]	End TVD [ft]	Start N/S [ft]	Start E/W [ft]	End N/S [ft]	End E/W [ft]
9.625in Casing	30.00	1594.00	1564.00	30.00	1577.62	0.00	-0.07	140.39	91.65
7.875in Open Hole	1594.00	17400.00	15806.00	1577.62	7422.63	140.39	91.65	1105.27	-9718.96



Actual Wellpath Report

BURROUGHS NORTH #01 AWP

Page 9 of 10



REFERENCE WELLPATH IDENTIFICATION			
Operator	EXTRACTION OIL & GAS	Slot	SLOT#05 BURROUGHS NORTH #01 (760'FNL&355'FEL,SEC.14)
Area	COLORADO	Well	BURROUGHS NORTH #01
Field	WELD COUNTY (NAD83/TRUE NORTH)	Wellbore	BURROUGHS NORTH #01 AWB
Facility	SEC.14-T07N-R65W		

TARGETS								
Name	TVD [ft]	North [ft]	East [ft]	Grid East [US ft]	Grid North [US ft]	Latitude	Longitude	Shape
SEC.14-T07N-R65W	5.00	-1485.63	118.07	3244150.01	1453283.79	40°34'27.630"N	104°37'15.950"W	polygon
SEC.15-T07N-R65W	5.00	-1485.63	118.07	3244150.01	1453283.79	40°34'27.630"N	104°37'15.950"W	polygon
BURROUGHS SOUTH #10 PSU	7288.00	-1485.63	118.07	3244150.01	1453283.79	40°34'27.630"N	104°37'15.950"W	polygon
SEC.14 & 15-T07N-R65W 460' SETBACK E/W	7288.00	-1485.63	118.07	3244150.01	1453283.79	40°34'27.630"N	104°37'15.950"W	polygon
BURROUGHS NORTH #01 BHL ON PLAT REV-1 (0'FNL&460'FWL,SEC.15)	7297.00	1100.99	-9783.01	3234224.09	1455772.12	40°34'53.170"N	104°39'24.270"W	point
BURROUGHS NORTH #01 BHL REV-1 FROM PLAN (0'FNL&460'FWL,SEC.15)	7297.00	1004.11	-9793.31	3234214.75	1455675.15	40°34'52.213"N	104°39'24.403"W	point
LANDING POINT ON PLAT (0'FNL&460'FEL,SEC.14)	7312.00	763.10	-101.88	3243907.81	1455530.16	40°34'49.850"N	104°37'18.800"W	point
BURROUGHS NORTH #01 BHL ON PLAT REV-2 (0'FNL&460'FWL,SEC.15)	7387.00	1100.99	-9783.01	3234224.09	1455772.12	40°34'53.170"N	104°39'24.270"W	point

WELLPATH COMPOSITION - Ref Wellbore: BURROUGHS NORTH #01 AWB Ref Wellpath: BURROUGHS NORTH #01 AWP					
Start MD [ft]	End MD [ft]	Positional Uncertainty Model	Log Name/Comment	Wellbore	
0.00	1560.00	ISCWSA MWD, Rev. 4 (Standard)	3rd Party Surface Surveys Provided by Extraction <131-1560>	BURROUGHS NORTH #01 AWB	
1560.00	17352.00	ISCWSA MWD, Rev. 4 (Standard)	3rd Party 7 7/8" Monobor Hole Surveys <1680'-17352>	BURROUGHS NORTH #01 AWB	
17352.00	17400.00	Blind Drilling (std)	Projection to bit	BURROUGHS NORTH #01 AWB	



Actual Wellpath Report

BURROUGHS NORTH #01 AWP

Page 10 of 10



REFERENCE WELLPATH IDENTIFICATION

Operator	EXTRACTION OIL & GAS	Slot	SLOT#05 BURROUGHS NORTH #01 (760'FNL&355'FEL,SEC.14)
Area	COLORADO	Well	BURROUGHS NORTH #01
Field	WELD COUNTY (NAD83/TRUE NORTH)	Wellbore	BURROUGHS NORTH #01 AWB
Facility	SEC.14-T07N-R65W		

WELLPATH COMMENTS

MD [ft]	Inclination [°]	Azimuth [°]	TVD [ft]	Comment
1560.00	12.000	29.500	1544.35	TIED TO SURFACE SURVEY
7768.00	89.400	267.242	7313.70	CROSSED SETBACK BOUNDARY (31'FSL & 460'FEL, SEC.11)
7776.00	89.820	266.840	7313.76	LANDING POINT (28'FSL & 471'FEL, SEC.11)
17352.00	92.680	275.890	7424.87	LAST ACTUAL SURVEY (1'FNL & 572'FWL, SEC.15)
17400.00	92.680	275.890	7422.63	PROJ TO TD (4'FSL & 572'FWL, SEC.10)