

1801 Broadway
Suite 500
Denver, Colorado 80202



Allison Schieber
Regulatory Technician
Tel: 303.398.0355
E-mail: aschieber@gwogco.com

February 28, 2017

Colorado Oil and Gas Conservation Commission
1120 Lincoln Street, Suite 801
Denver, Colorado 80203

RE: **Proposed Wellbore Spacing Unit**
Schnieder HD 11-259HNX
Niobrara New Drill

SWSW Section 7
Township 4N, Range 66W, 6th P.M.
Weld County, Colorado

Dear Director:

Great Western Operating Company, LLC is planning to drill the above captioned well in accordance with the provisions of COGCC Rule 318A.e.
Great Western proposed wellbore spacing unit consists of:

- **Sec 11: S2**
- **Sec 12: S2**
- **640 Acres**

The 30 day notification time period has passed and we have not received any objections to such well locations or proposed spacing unit, therefore Great Western hereby requests the Director to approve the above mentioned well. Great Western Operating Company, LLC respectfully requests that the COGCC review the enclosed map illustrating the proposed wellbore spacing unit.

Respectfully,

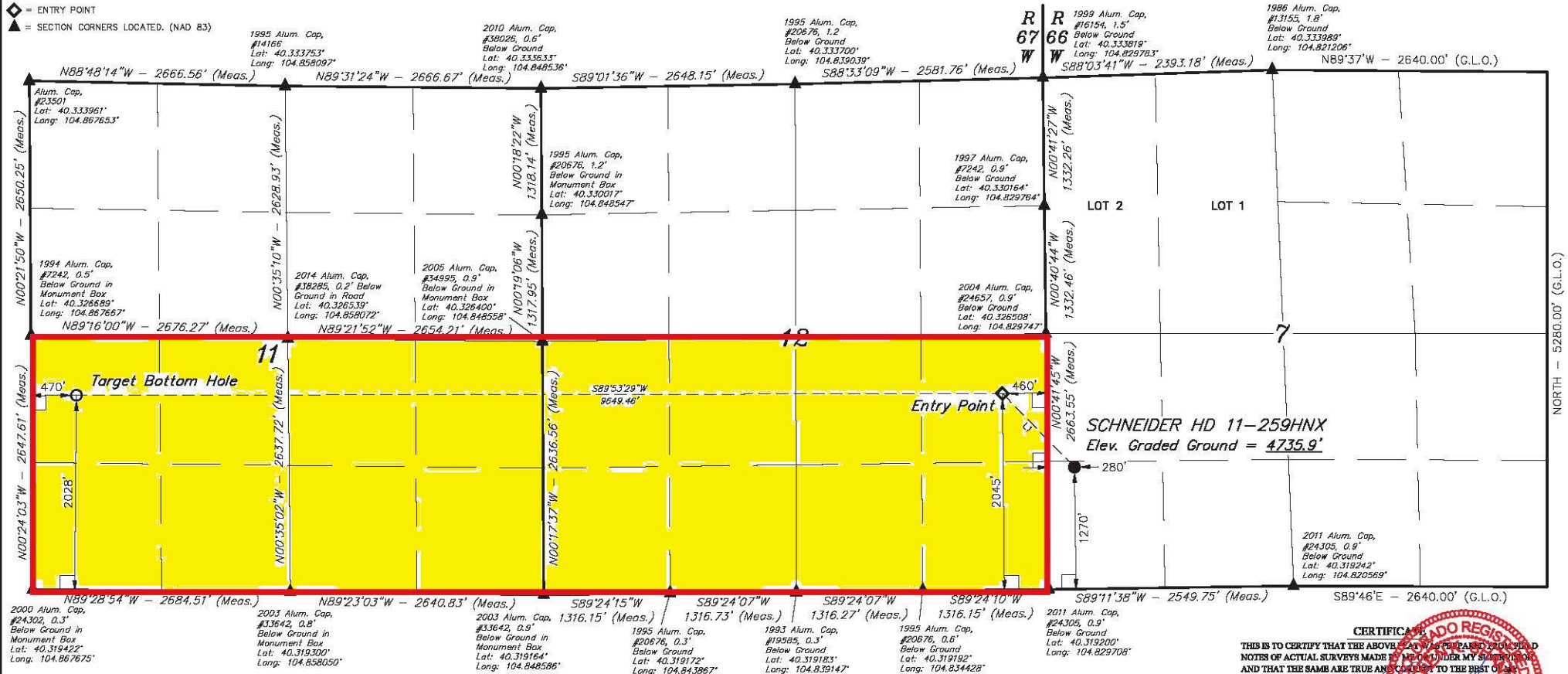
Allison Schieber

Allison Schieber
Regulatory Technician
Great Western Operating Company, LLC

LEGEND:

- 90° SYMBOL
- PROPOSED WELLHEAD.
- TARGET BOTTOM HOLE.
- ENTRY POINT
- SECTION CORNERS LOCATED. (NAD 83)

T4N, R66W, 6th P.M.



2000 Alum. Cap. #24302, 0.3' Below Ground in Monument Box Lat: 40.319422° Long: 104.867675°

2003 Alum. Cap. #33642, 0.8' Below Ground in Monument Box Lat: 40.319300° Long: 104.858050°

2003 Alum. Cap. #33642, 0.9' Below Ground in Monument Box Lat: 40.319164° Long: 104.848586°

1995 Alum. Cap. #20676, 0.3' Below Ground Lat: 40.319172° Long: 104.843867°

1993 Alum. Cap. #19585, 0.3' Below Ground Lat: 40.319183° Long: 104.839147°

1995 Alum. Cap. #20676, 0.6' Below Ground Lat: 40.319192° Long: 104.834428°

2011 Alum. Cap. #24305, 0.9' Below Ground Lat: 40.319200° Long: 104.829708°

1995 Alum. Cap. #20676, 0.9' Below Ground Lat: 40.319200° Long: 104.829708°

1995 Alum. Cap. #20676, 0.9' Below Ground Lat: 40.319200° Long: 104.829708°

1995 Alum. Cap. #20676, 0.9' Below Ground Lat: 40.319200° Long: 104.829708°

1995 Alum. Cap. #20676, 0.9' Below Ground Lat: 40.319200° Long: 104.829708°

1995 Alum. Cap. #20676, 0.9' Below Ground Lat: 40.319200° Long: 104.829708°

1995 Alum. Cap. #20676, 0.9' Below Ground Lat: 40.319200° Long: 104.829708°

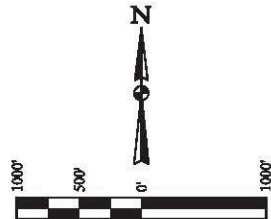
1995 Alum. Cap. #20676, 0.9' Below Ground Lat: 40.319200° Long: 104.829708°

1995 Alum. Cap. #20676, 0.9' Below Ground Lat: 40.319200° Long: 104.829708°

BASIS OF BEARINGS
BASIS OF BEARINGS IS A G.P.S. OBSERVATION
BASIS OF ELEVATION
USGS COOPERATIVE BASE NETWORK CONTROL STATION, DESIGNATION "VERMILYRA", NGS DATA SHEET LISTS THE NAVD 88 ELEVATION AS BEING 5026 FEET.



UELLS, LLC
Corporate Office • 85 South 200 East
Vernal, UT 84078 • (435) 789-1017



LINE TABLE		
LINE	DIRECTION	LENGTH
L1	N44°22'22"W	1071.58'

NAD 83 (SURFACE LOCATION)	NAD 83 (ENTRY POINT)	NAD 83 (TARGET BOTTOM HOLE)
LATITUDE = 40°1921.68" (40.322689)	LATITUDE = 40°1929.31" (40.324808)	LATITUDE = 40°1929.88" (40.324967)
LONGITUDE = 104°4943.40" (104.828722)	LONGITUDE = 104°4953.00" (104.831389)	LONGITUDE = 104°5157.54" (104.865983)
NAD 27 (SURFACE LOCATION)	NAD 27 (ENTRY POINT)	NAD 27 (TARGET BOTTOM HOLE)
LATITUDE = 40°1921.75" (40.322708)	LATITUDE = 40°1929.37" (40.324825)	LATITUDE = 40°1929.95" (40.324986)
LONGITUDE = 104°4941.51" (104.828197)	LONGITUDE = 104°4951.10" (104.830861)	LONGITUDE = 104°5155.64" (104.865436)

CERTIFICATE
THIS IS TO CERTIFY THAT THE ABOVE SAID SURVEY WAS MADE IN ACCORDANCE WITH THE NOTES OF ACTUAL SURVEYS MADE BY ME OR UNDER MY SUPERVISION, AND THAT THE SAME ARE TRUE AND CORRECT TO THE BEST OF MY KNOWLEDGE AND BELIEF.



REV: 1 11-16-16 K.B. (NAME, EP & TBH CHANGE)

GREAT WESTERN OPERATING COMPANY

SCHNEIDER HD 11-259HNX
SW 1/4 SW 1/4, SECTION 7, T4N, R66W, 6th P.M.
WELD COUNTY, COLORADO

SURVEYED BY	GREG WEIMER, J.S.	SCALE	1" = 1000'
DRAWN BY	K.B.	DATE	05-31-16

WELL LOCATION PLAT