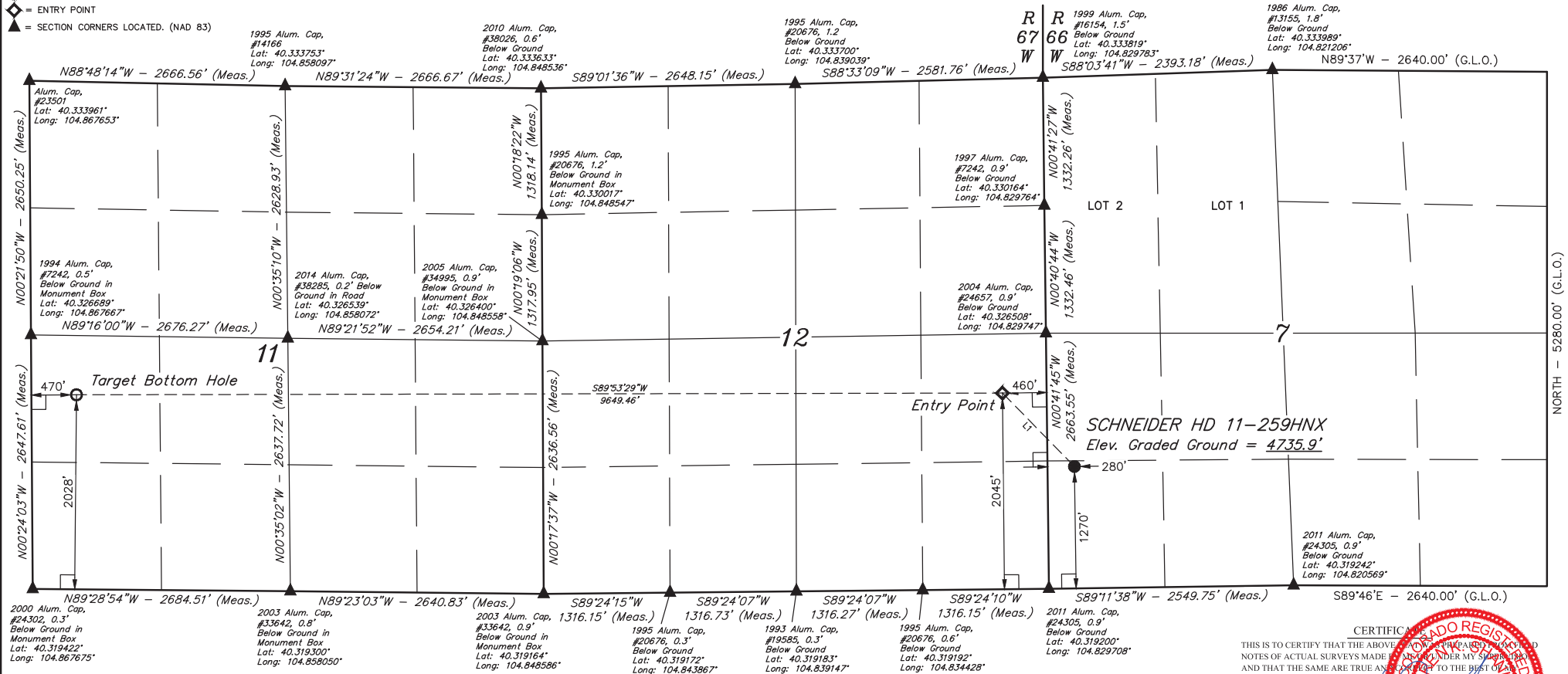


LEGEND:

- = 90° SYMBOL
- = PROPOSED WELLHEAD.
- = TARGET BOTTOM HOLE.
- ◆ = ENTRY POINT
- ▲ = SECTION CORNERS LOCATED. (NAD 83)

T4N, R66W, 6th P.M.



NORTH — 5280.00' (G.L.O.)



CERTIFICATE
THIS IS TO CERTIFY THAT THE ABOVE NOTED SURVEY WAS MADE IN ACCORDANCE WITH THE NOTES OF ACTUAL SURVEYS MADE BY ME OR UNDER MY SUPERVISION AND THAT THE SAME ARE TRUE AND CORRECT TO THE BEST OF MY KNOWLEDGE AND BELIEF.

REGISTERED LAND SURVEYOR
REGISTRATION NO. 28285
STATE OF COLORADO
DAVID L. SMITH

LINE TABLE		
LINE	DIRECTION	LENGTH
L1	N44°22'22"W	1071.58'

REV: 1 11-16-16 K.B. (NAME, EP & TBH CHANGE)

GREAT WESTERN OPERATING COMPANY

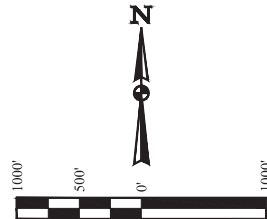
SCHNEIDER HD 11-259HNX
SW 1/4 SW 1/4, SECTION 7, T4N, R66W, 6th P.M.
WELD COUNTY, COLORADO

SURVEYED BY	GREG WEIMER, J.S.	05-27-16	SCALE
DRAWN BY	K.B.	05-31-16	1" = 1000'

WELL LOCATION PLAT

PDOP = 1.2

NAD 83 (SURFACE LOCATION)	NAD 83 (ENTRY POINT)	NAD 83 (TARGET BOTTOM HOLE)
LATITUDE = 40°19'21.68" (40.322689)	LATITUDE = 40°19'29.31" (40.324808)	LATITUDE = 40°19'29.88" (40.324967)
LONGITUDE = 104°49'43.40" (104.828722)	LONGITUDE = 104°49'53.00" (104.831389)	LONGITUDE = 104°51'57.54" (104.865983)
NAD 27 (SURFACE LOCATION)	NAD 27 (ENTRY POINT)	NAD 27 (TARGET BOTTOM HOLE)
LATITUDE = 40°19'21.75" (40.322708)	LATITUDE = 40°19'29.37" (40.324825)	LATITUDE = 40°19'29.95" (40.324986)
LONGITUDE = 104°49'41.51" (104.828197)	LONGITUDE = 104°49'51.10" (104.830861)	LONGITUDE = 104°51'55.64" (104.865456)



BASIS OF BEARINGS
BASIS OF BEARINGS IS A G.P.S. OBSERVATION

BASIS OF ELEVATION
USGS COOPERATIVE BASE NETWORK CONTROL STATION, DESIGNATION "VERMILYEA". NGS DATA SHEET LISTS THE NAVD 88 ELEVATION AS BEING 5026 FEET.



UELS, LLC
Corporate Office * 85 South 200 East
Vernal, UT 84078 * (435) 789-1017