



Kerr-McGee Oil & Gas Onshore LP

A subsidiary of Anadarko Petroleum Corporation

1099 18th Street
Denver, CO 80202
720-929-6000

April 13, 2017

Matt Lepore
Director, Colorado Oil and Gas Conservation Commission
Department of Natural Resources
The Chancery Building
1120 Lincoln Street, Suite 801
Denver, CO 80203

Re: **30 Day Certification Letter - 318A.e**
RW 35N-32HZ (Doc No. 401203301)
Township 3 North, Range 65 West
Section 29: SESW
Unit Acreage: 480 acres
Unit Spacing: 03N65W Sec 29: S/2SW/4
03N65W Sec 32: W/2
02N65W Sec 5: N/2NW/4
Weld County, Colorado

Dear Director Lepore:

Kerr McGee Oil and Gas Onshore LP (“KMG”) hereby certifies that KMG owns one hundred percent (100%) of the leasehold interest in the mineral rights in the proposed spacing unit. KMG hereby respectfully requests approval of this boundary well.

If you have any questions or issues regarding this permit, please contact our office.

Sincerely,

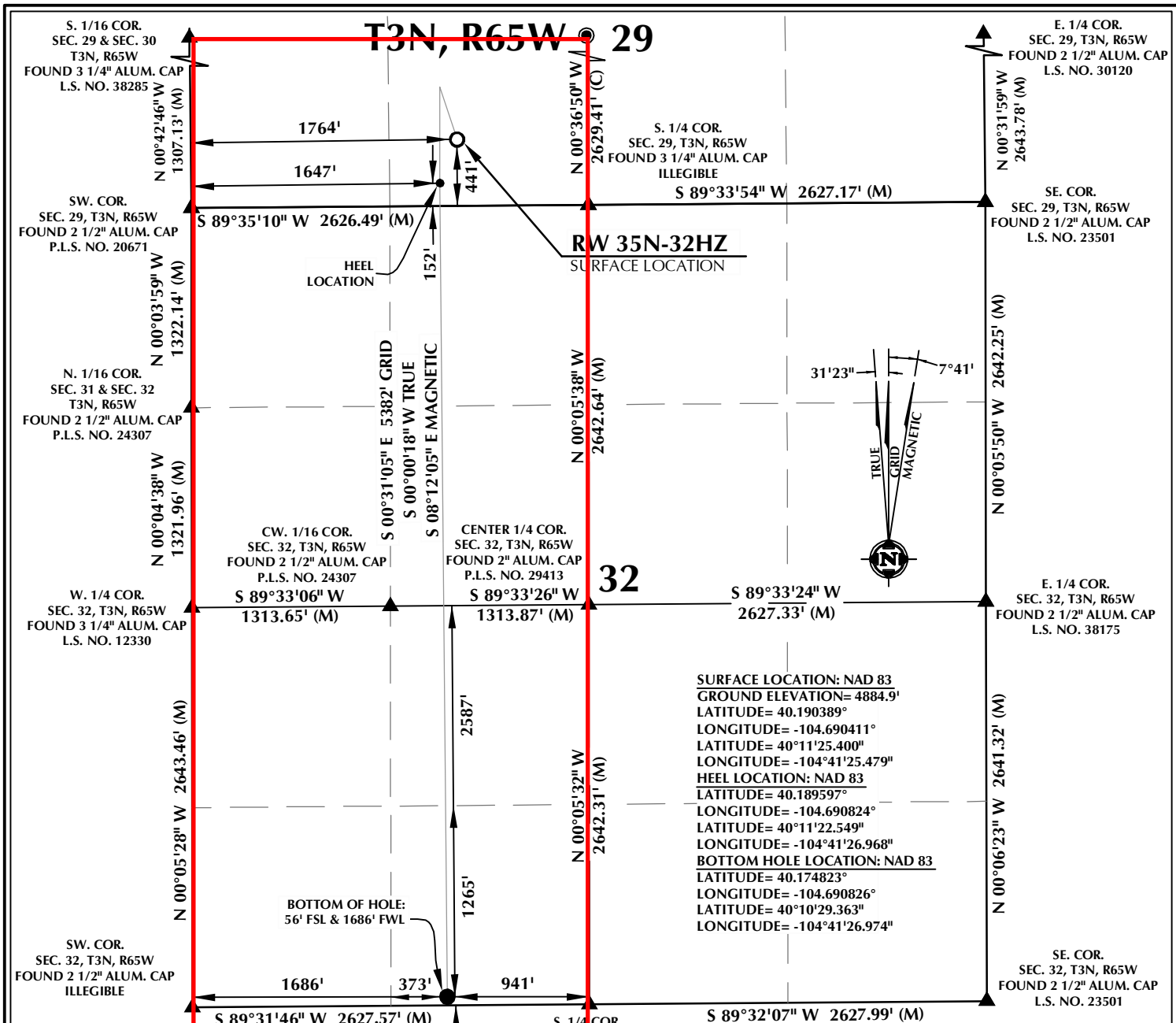
Kerr-McGee Oil and Gas Onshore LP

A handwritten signature in blue ink that reads "Cheryl Light".

Cheryl Light
Senior Regulatory Analyst

Enclosure

PROPOSED SPACING UNIT



CERTIFICATE OF SURVEYOR:

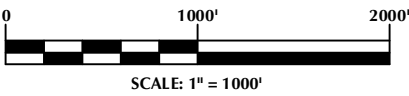
THIS IS TO CERTIFY THAT THE ABOVE PLAT WAS PREPARED FROM FIELD NOTES OF ACTUAL SURVEY MADE BY ME OR UNDER MY SUPERVISION AND THAT THE SAME ARE TRUE AND CORRECT TO THE BEST OF MY KNOWLEDGE AND BELIEF. THIS CERTIFICATE DOES NOT REPRESENT A LAND SURVEY PLAT OR IMPROVEMENT SURVEY PLAT AS DEFINED BY C.R.S. 38-51-302 AND CANNOT BE RELIED UPON TO DETERMINE OWNERSHIP.

Randall K. French
RANDALL K. FRENCH
 PROFESSIONAL LAND SURVEYOR
 COLORADO REGISTRATION NUMBER 38512

NOTICE:
 ACCORDING TO COLORADO STATE LAW YOU MUST COMMENCE ANY LEGAL ACTION BASED UPON ANY DEFECT IN THIS SURVEY WITHIN THREE YEARS AFTER YOU FIRST DISCOVER SUCH DEFECT. IN NO EVENT MAY ANY ACTION BASED UPON ANY DEFECT IN THIS SURVEY BE COMMENCED MORE THAN TEN YEARS FROM THE DATE ON THE CERTIFICATION SHOWN HEREON.

NOTES:

1. ▲ INDICATES SECTION CORNER
2. ● INDICATES CALCULATED CORNER
3. ELEVATION BASED ON NAVD88 (GEOID12B)
4. BASIS OF BEARING DERIVED FROM COLORADO COORDINATE SYSTEM OF 1983 NORTH ZONE.
5. ALL MEASURED DISTANCES ARE GRID.
 COMBINED SCALE FACTOR: .99972501 CALCULATED FROM THE W. 1/4 CORNER OF SECTION 29, T3N, R65W
 OPERATOR: ROB WILSON / PDOP = 1.2
6. SEE ADDENDUM TO WELL LOCATION CERTIFICATE FOR EXISTING IMPROVEMENTS WITHIN 500' OF THE WELL PAD.
7. WELL FOOTAGES ARE MEASURED AT RIGHT ANGLES TO THE SECTION LINES.
8. THE BOTTOM OF HOLE BEARS S00°31'05"E, 5382' FROM THE HEEL LOCATION.



NOTE:
 MAGNETIC NORTH IS CURRENT AS OF 12/2/2016.
 MAGNETIC NORTH CHANGES WEST 0°06' PER YEAR.

WELL PAD - RW 29N-5HZ

RW 35N-32HZ
 LOCATION CERTIFICATE
 441' FSL & 1764' FWL SESW (SURFACE)
 152' FSL & 1647' FWL SESW (HEEL)
 LOCATED IN SECTION 29
 56' FSL & 1686' FWL SESW (BOTTOM)
 LOCATED IN SECTION 32
 T3N, R65W, 6TH P.M.
 WELD COUNTY, COLORADO

Kerr-McGee Oil & Gas Onshore L.P.
 1099 18th Street
 Denver, Colorado 80202



CONSULTING, LLC

SHERIDAN OFFICE
 1095 Saberton Avenue
 Sheridan, Wyoming 82801
 Phone 307-674-0609

LOVELAND OFFICE
 1635 Foxtrail Drive, Suite 204
 Loveland, Colorado 80538
 Phone 970-776-4331

DRAFTED BY: LMO	CHECKED BY: RKF
DATE DRAFTED: 1/23/17	DATE SURVEYED: 12/1/16
REVISED:	FILE NAME: 16-147