

EXTRACTION OIL & GAS

WELD COUNTY, COLORADO (NAD 83)

SW SE SEC. 32 T6N R65W 6th P.M.

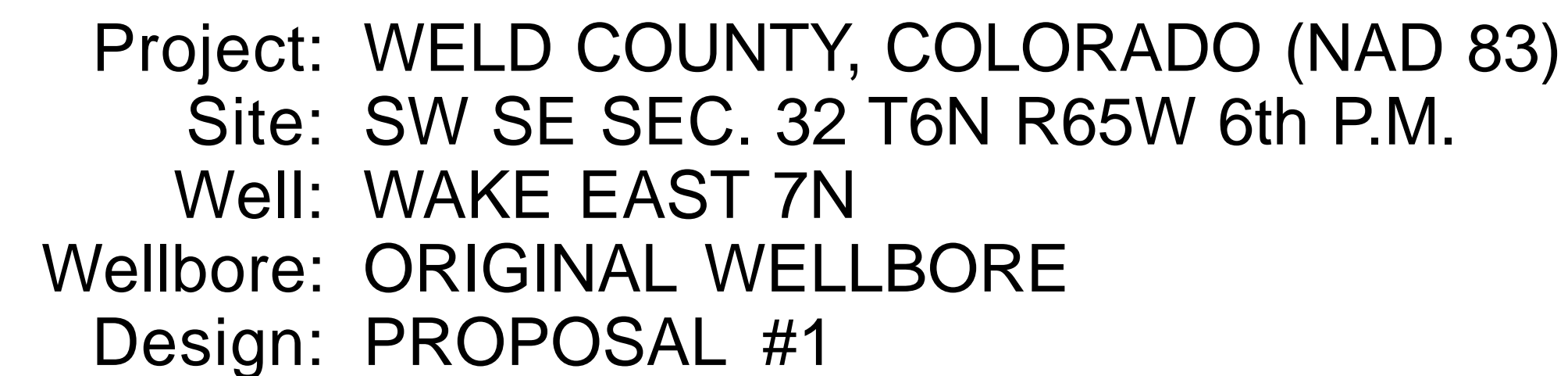
WAKE EAST 7N

ORIGINAL WELLBORE

04 March, 2017

Plan: PROPOSAL #1





<p>PROPOSED LOCAL COORDINATES</p> <p>SHL: 854ft FSL & 1636ft FEL of Sec 32</p> <p>LP: 1608ft FNL & 460ft FWL of Sec 33</p> <p>BHL: 1651ft FNL & 460ft FEL of Sec 34</p>	
	<p>Azimuths to True North</p> <p>Magnetic North: 8.20°</p> <p>Magnetic Field</p> <p>Strength: 52455.3nT</p> <p>Dip Angle: 66.9°</p> <p>Date: 04/03/2014</p> <p>Model: IGRF2010</p>

True Vertical Depth (550 usft/in)

Vertical Section at 31.81° (550 usft/in)

START NUDGE (2°/100ft BUR)

EOB TO 35.84° INC

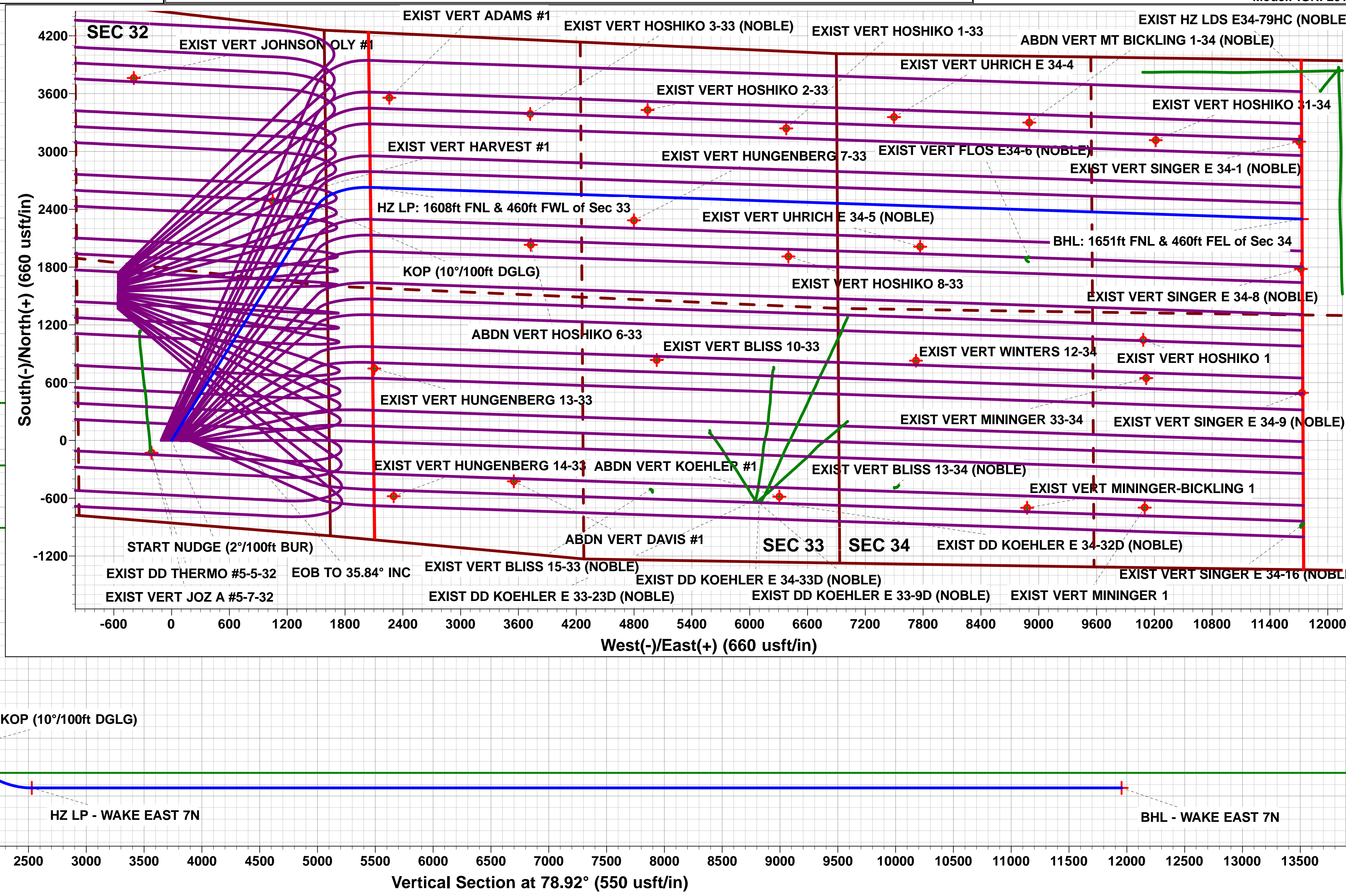
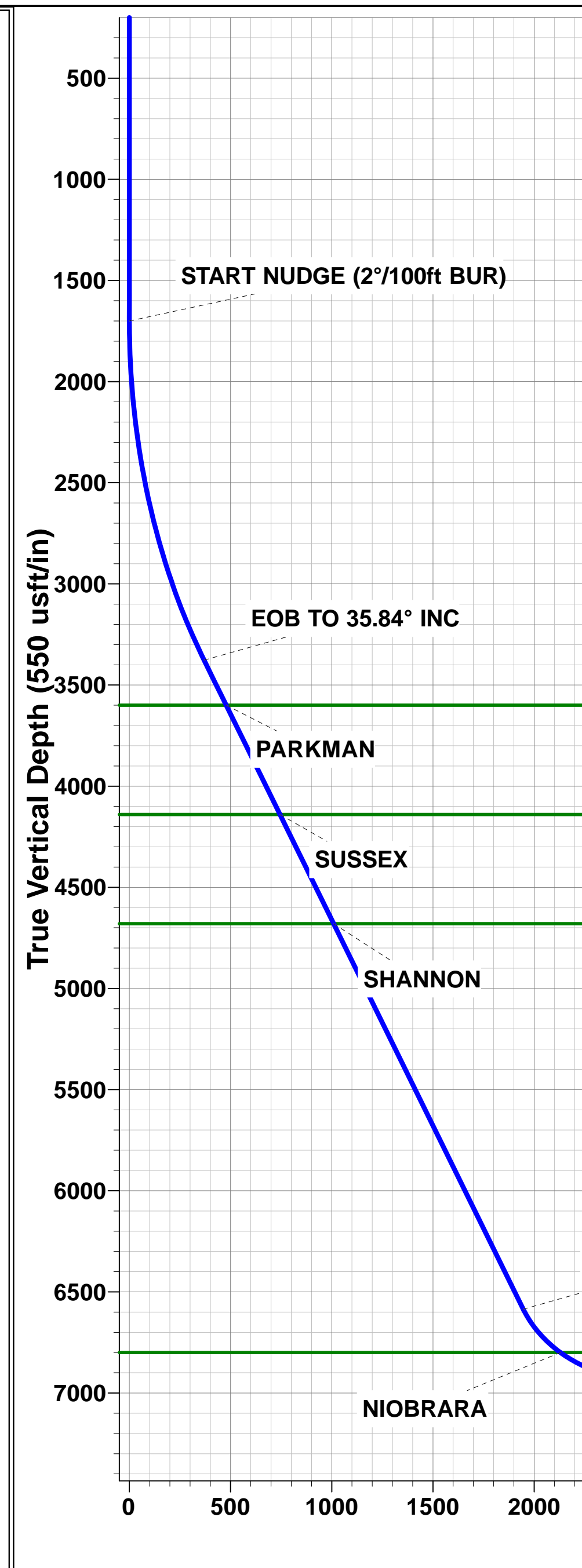
PARKMAN

SUSSEX

SHANNON

KOP (10°/100ft DGLG)

NIOBRARA



Planning Report



Database:	EDM 5000.1 Single User Db	Local Co-ordinate Reference:	Well WAKE EAST 7N
Company:	EXTRACTION OIL & GAS	TVD Reference:	KB-EST @ 4659.0usft (Original Well Elev)
Project:	WELD COUNTY, COLORADO (NAD 83)	MD Reference:	KB-EST @ 4659.0usft (Original Well Elev)
Site:	SW SE SEC. 32 T6N R65W 6th P.M.	North Reference:	True
Well:	WAKE EAST 7N	Survey Calculation Method:	Minimum Curvature
Wellbore:	ORIGINAL WELLBORE		
Design:	PROPOSAL #1		

Project	WELD COUNTY, COLORADO (NAD 83)		
Map System:	US State Plane 1983	System Datum:	Mean Sea Level
Geo Datum:	North American Datum 1983		
Map Zone:	Colorado Northern Zone		Using geodetic scale factor

Site	SW SE SEC. 32 T6N R65W 6th P.M.		
Site Position:		Northing:	1,403,754.85 usft
From:	Lat/Long	Easting:	3,227,136.61 usft
Position Uncertainty:	0.0 usft	Slot Radius:	1.10000ft
		Latitude:	40.438840
		Longitude:	-104.683980
		Grid Convergence:	0.53 °

Well	WAKE EAST 7N		
Well Position	+N/-S	0.0 usft	Northing:
	+E/-W	108.6 usft	Easting:
Position Uncertainty	0.0 usft		Wellhead Elevation:
			Latitude:
			Longitude:
			Ground Level:

Wellbore	ORIGINAL WELLBORE				
Magnetics	Model Name	Sample Date	Declination (°)	Dip Angle (°)	Field Strength (nT)
	IGRF2015	04/03/2017	8.20	66.91	52,455

Design	PROPOSAL #1			
Audit Notes:				
Version:	Phase:	PROTOTYPE	Tie On Depth:	0.0
Vertical Section:	Depth From (TVD) (usft)	+N/-S (usft)	+E/-W (usft)	Direction (°)
	6,930.0	0.0	0.0	78.92

Plan Sections											
MD (usft)	Inc (°)	Azi (°)	Vertical Depth	SS (usft)	+N/-S (usft)	+E/-W (usft)	Dogleg Rate (°/100usf)	Build Rate (°/100usf)	Turn Rate (°/100usf)	TFO (°)	Target
0.0	0.00	0.00	0.0	-4,659.0	0.0	0.0	0.00	0.00	0.00	0.00	
1,700.0	0.00	0.00	1,700.0	-2,959.0	0.0	0.0	0.00	0.00	0.00	0.00	
3,491.8	35.84	31.81	3,377.3	-1,281.7	460.9	285.9	2.00	2.00	0.00	31.81	
7,449.8	35.84	31.81	6,586.0	1,927.0	2,430.1	1,507.4	0.00	0.00	0.00	0.00	
8,180.3	90.00	91.95	6,930.0	2,271.0	2,626.8	2,062.4	10.00	7.41	8.23	65.04	HZ LP - WAKE EAS
17,855.3	90.00	91.95	6,930.0	2,271.0	2,298.0	11,731.8	0.00	0.00	0.00	0.00	BHL - WAKE EAST

Database:	EDM 5000.1 Single User Db	Local Co-ordinate Reference:	Well WAKE EAST 7N
Company:	EXTRACTION OIL & GAS	TVD Reference:	KB-EST @ 4659.0usft (Original Well Elev)
Project:	WELD COUNTY, COLORADO (NAD 83)	MD Reference:	KB-EST @ 4659.0usft (Original Well Elev)
Site:	SW SE SEC. 32 T6N R65W 6th P.M.	North Reference:	True
Well:	WAKE EAST 7N	Survey Calculation Method:	Minimum Curvature
Wellbore:	ORIGINAL WELLBORE		
Design:	PROPOSAL #1		

Planned Survey

MD (usft)	Inc (°)	Azi (°)	TVD (usft)	SS (usft)	+N/-S (usft)	+E/-W (usft)	Vertical Section (usft)	Dogleg Rate (°/100usft)	Build Rate (°/100usft)	Turn Rate (°/100usft)
SHL: 854ft FSL & 1636ft FEL of Sec 32										
0.0	0.00	0.00	0.0	4,659.00	0.0	0.0	0.0	0.00	0.00	0.00
100.0	0.00	0.00	100.0	4,559.00	0.0	0.0	0.0	0.00	0.00	0.00
200.0	0.00	0.00	200.0	4,459.00	0.0	0.0	0.0	0.00	0.00	0.00
300.0	0.00	0.00	300.0	4,359.00	0.0	0.0	0.0	0.00	0.00	0.00
400.0	0.00	0.00	400.0	4,259.00	0.0	0.0	0.0	0.00	0.00	0.00
500.0	0.00	0.00	500.0	4,159.00	0.0	0.0	0.0	0.00	0.00	0.00
600.0	0.00	0.00	600.0	4,059.00	0.0	0.0	0.0	0.00	0.00	0.00
700.0	0.00	0.00	700.0	3,959.00	0.0	0.0	0.0	0.00	0.00	0.00
800.0	0.00	0.00	800.0	3,859.00	0.0	0.0	0.0	0.00	0.00	0.00
900.0	0.00	0.00	900.0	3,759.00	0.0	0.0	0.0	0.00	0.00	0.00
1,000.0	0.00	0.00	1,000.0	3,659.00	0.0	0.0	0.0	0.00	0.00	0.00
1,100.0	0.00	0.00	1,100.0	3,559.00	0.0	0.0	0.0	0.00	0.00	0.00
1,200.0	0.00	0.00	1,200.0	3,459.00	0.0	0.0	0.0	0.00	0.00	0.00
1,300.0	0.00	0.00	1,300.0	3,359.00	0.0	0.0	0.0	0.00	0.00	0.00
1,400.0	0.00	0.00	1,400.0	3,259.00	0.0	0.0	0.0	0.00	0.00	0.00
1,500.0	0.00	0.00	1,500.0	3,159.00	0.0	0.0	0.0	0.00	0.00	0.00
1,600.0	0.00	0.00	1,600.0	3,059.00	0.0	0.0	0.0	0.00	0.00	0.00
START NUDGE (2°/100ft BUR)										
1,700.0	0.00	0.00	1,700.0	2,959.00	0.0	0.0	0.0	0.00	0.00	0.00
1,800.0	2.00	31.81	1,800.0	2,859.02	1.5	0.9	1.2	2.00	2.00	0.00
1,900.0	4.00	31.81	1,899.8	2,759.16	5.9	3.7	4.7	2.00	2.00	0.00
2,000.0	6.00	31.81	1,999.5	2,659.55	13.3	8.3	10.7	2.00	2.00	0.00
2,100.0	8.00	31.81	2,098.7	2,560.30	23.7	14.7	19.0	2.00	2.00	0.00
2,200.0	10.00	31.81	2,197.5	2,461.53	37.0	22.9	29.6	2.00	2.00	0.00
2,300.0	12.00	31.81	2,295.6	2,363.38	53.2	33.0	42.6	2.00	2.00	0.00
2,400.0	14.00	31.81	2,393.1	2,265.94	72.3	44.9	57.9	2.00	2.00	0.00
2,500.0	16.00	31.81	2,489.6	2,169.36	94.3	58.5	75.5	2.00	2.00	0.00
2,600.0	18.00	31.81	2,585.3	2,073.73	119.2	73.9	95.4	2.00	2.00	0.00
2,700.0	20.00	31.81	2,679.8	1,979.18	146.8	91.1	117.6	2.00	2.00	0.00
2,800.0	22.00	31.81	2,773.2	1,885.83	177.3	110.0	142.0	2.00	2.00	0.00
2,900.0	24.00	31.81	2,865.2	1,793.79	210.5	130.6	168.6	2.00	2.00	0.00
3,000.0	26.00	31.81	2,955.8	1,703.16	246.4	152.8	197.3	2.00	2.00	0.00
3,100.0	28.00	31.81	3,044.9	1,614.06	285.0	176.8	228.2	2.00	2.00	0.00
3,200.0	30.00	31.81	3,132.4	1,526.61	326.2	202.3	261.2	2.00	2.00	0.00
3,300.0	32.00	31.81	3,218.1	1,440.89	369.9	229.5	296.3	2.00	2.00	0.00
3,400.0	34.00	31.81	3,302.0	1,357.03	416.2	258.2	333.4	2.00	2.00	0.00
EOB TO 35.84° INC										
3,491.8	35.84	31.81	3,377.3	1,281.74	460.9	285.9	369.1	2.00	2.00	0.00
3,500.0	35.84	31.81	3,383.9	1,275.11	464.9	288.4	372.4	0.00	0.00	0.00
3,600.0	35.84	31.81	3,465.0	1,194.04	514.7	319.3	412.2	0.00	0.00	0.00
3,700.0	35.84	31.81	3,546.0	1,112.97	564.4	350.1	452.1	0.00	0.00	0.00
PARKMAN										
3,766.6	35.84	31.81	3,600.0	1,059.00	597.6	370.7	478.6	0.00	0.00	0.00
3,800.0	35.84	31.81	3,627.1	1,031.90	614.2	381.0	491.9	0.00	0.00	0.00
3,900.0	35.84	31.81	3,708.2	950.84	663.9	411.8	531.8	0.00	0.00	0.00
4,000.0	35.84	31.81	3,789.2	869.77	713.7	442.7	571.6	0.00	0.00	0.00
4,100.0	35.84	31.81	3,870.3	788.70	763.5	473.6	611.5	0.00	0.00	0.00
4,200.0	35.84	31.81	3,951.4	707.63	813.2	504.4	651.3	0.00	0.00	0.00
4,300.0	35.84	31.81	4,032.4	626.56	863.0	535.3	691.2	0.00	0.00	0.00
4,400.0	35.84	31.81	4,113.5	545.49	912.7	566.1	731.0	0.00	0.00	0.00
SUSSEX										
4,432.7	35.84	31.81	4,140.0	519.00	929.0	576.2	744.1	0.00	0.00	0.00
4,500.0	35.84	31.81	4,194.6	464.42	962.5	597.0	770.9	0.00	0.00	0.00

Planning Report



Database:	EDM 5000.1 Single User Db	Local Co-ordinate Reference:	Well WAKE EAST 7N
Company:	EXTRACTION OIL & GAS	TVD Reference:	KB-EST @ 4659.0usft (Original Well Elev)
Project:	WELD COUNTY, COLORADO (NAD 83)	MD Reference:	KB-EST @ 4659.0usft (Original Well Elev)
Site:	SW SE SEC. 32 T6N R65W 6th P.M.	North Reference:	True
Well:	WAKE EAST 7N	Survey Calculation Method:	Minimum Curvature
Wellbore:	ORIGINAL WELLBORE		
Design:	PROPOSAL #1		

Planned Survey

MD (usft)	Inc (°)	Azi (°)	TVD (usft)	SS (usft)	+N/-S (usft)	+E/-W (usft)	Vertical Section (usft)	Dogleg Rate (°/100usft)	Build Rate (°/100usft)	Turn Rate (°/100usft)
4,600.0	35.84	31.81	4,275.6	383.35	1,012.2	627.9	810.7	0.00	0.00	0.00
4,700.0	35.84	31.81	4,356.7	302.28	1,062.0	658.7	850.6	0.00	0.00	0.00
4,800.0	35.84	31.81	4,437.8	221.21	1,111.7	689.6	890.4	0.00	0.00	0.00
4,900.0	35.84	31.81	4,518.9	140.14	1,161.5	720.5	930.3	0.00	0.00	0.00
5,000.0	35.84	31.81	4,599.9	59.07	1,211.2	751.3	970.1	0.00	0.00	0.00
SHANNON										
5,098.8	35.84	31.81	4,680.0	-21.00	1,260.4	781.8	1,009.5	0.00	0.00	0.00
5,100.0	35.84	31.81	4,681.0	-21.99	1,261.0	782.2	1,010.0	0.00	0.00	0.00
5,200.0	35.84	31.81	4,762.1	-103.06	1,310.7	813.0	1,049.8	0.00	0.00	0.00
5,300.0	35.84	31.81	4,843.1	-184.13	1,360.5	843.9	1,089.7	0.00	0.00	0.00
5,400.0	35.84	31.81	4,924.2	-265.20	1,410.2	874.8	1,129.5	0.00	0.00	0.00
5,500.0	35.84	31.81	5,005.3	-346.27	1,460.0	905.6	1,169.4	0.00	0.00	0.00
5,600.0	35.84	31.81	5,086.3	-427.34	1,509.7	936.5	1,209.2	0.00	0.00	0.00
5,700.0	35.84	31.81	5,167.4	-508.41	1,559.5	967.3	1,249.1	0.00	0.00	0.00
5,800.0	35.84	31.81	5,248.5	-589.48	1,609.3	998.2	1,288.9	0.00	0.00	0.00
5,900.0	35.84	31.81	5,329.5	-670.55	1,659.0	1,029.1	1,328.8	0.00	0.00	0.00
6,000.0	35.84	31.81	5,410.6	-751.62	1,708.8	1,059.9	1,368.6	0.00	0.00	0.00
6,100.0	35.84	31.81	5,491.7	-832.69	1,758.5	1,090.8	1,408.5	0.00	0.00	0.00
6,200.0	35.84	31.81	5,572.8	-913.76	1,808.3	1,121.7	1,448.3	0.00	0.00	0.00
6,300.0	35.84	31.81	5,653.8	-994.83	1,858.0	1,152.5	1,488.2	0.00	0.00	0.00
6,400.0	35.84	31.81	5,734.9	-1,075.89	1,907.8	1,183.4	1,528.0	0.00	0.00	0.00
6,500.0	35.84	31.81	5,816.0	-1,156.96	1,957.5	1,214.2	1,567.9	0.00	0.00	0.00
6,600.0	35.84	31.81	5,897.0	-1,238.03	2,007.3	1,245.1	1,607.7	0.00	0.00	0.00
6,700.0	35.84	31.81	5,978.1	-1,319.10	2,057.0	1,276.0	1,647.6	0.00	0.00	0.00
6,800.0	35.84	31.81	6,059.2	-1,400.17	2,106.8	1,306.8	1,687.4	0.00	0.00	0.00
6,900.0	35.84	31.81	6,140.2	-1,481.24	2,156.5	1,337.7	1,727.3	0.00	0.00	0.00
7,000.0	35.84	31.81	6,221.3	-1,562.31	2,206.3	1,368.5	1,767.1	0.00	0.00	0.00
7,100.0	35.84	31.81	6,302.4	-1,643.38	2,256.0	1,399.4	1,807.0	0.00	0.00	0.00
7,200.0	35.84	31.81	6,383.4	-1,724.45	2,305.8	1,430.3	1,846.8	0.00	0.00	0.00
7,300.0	35.84	31.81	6,464.5	-1,805.52	2,355.6	1,461.1	1,886.7	0.00	0.00	0.00
7,400.0	35.84	31.81	6,545.6	-1,886.59	2,405.3	1,492.0	1,926.5	0.00	0.00	0.00
KOP (10°/100ft DGLG)										
7,449.8	35.84	31.81	6,586.0	-1,926.98	2,430.1	1,507.4	1,946.4	0.00	0.00	0.00
7,500.0	38.19	39.18	6,626.1	-1,967.06	2,454.6	1,524.9	1,968.3	10.00	4.69	14.69
7,600.0	44.03	51.57	6,701.5	-2,042.50	2,500.3	1,571.8	2,023.1	10.00	5.84	12.39
7,700.0	50.94	61.40	6,769.1	-2,110.13	2,540.6	1,633.2	2,091.1	10.00	6.91	9.83
NIOBRARA										
7,751.1	54.75	65.68	6,800.0	-2,141.00	2,558.7	1,669.7	2,130.4	10.00	7.46	8.37
7,800.0	58.52	69.40	6,826.9	-2,167.89	2,574.3	1,707.4	2,170.4	10.00	7.72	7.62
7,900.0	66.53	76.17	6,873.0	-2,214.03	2,600.3	1,792.1	2,258.5	10.00	8.00	6.77
8,000.0	74.79	82.14	6,906.1	-2,247.15	2,617.9	1,884.7	2,352.7	10.00	8.26	5.98
8,100.0	83.20	87.66	6,925.2	-2,266.24	2,626.5	1,982.3	2,450.2	10.00	8.41	5.52
HZ LP: 1608ft FNL & 460ft FWL of Sec 33										
8,180.3	90.00	91.95	6,930.0	-2,271.00	2,626.8	2,062.4	2,528.9	10.00	8.47	5.33
8,200.0	90.00	91.95	6,930.0	-2,271.00	2,626.1	2,082.1	2,548.1	0.00	0.00	0.00
8,300.0	90.00	91.95	6,930.0	-2,271.00	2,622.7	2,182.0	2,645.5	0.00	0.00	0.00
8,400.0	90.00	91.95	6,930.0	-2,271.00	2,619.3	2,282.0	2,742.9	0.00	0.00	0.00
8,500.0	90.00	91.95	6,930.0	-2,271.00	2,615.9	2,381.9	2,840.3	0.00	0.00	0.00
8,600.0	90.00	91.95	6,930.0	-2,271.00	2,612.5	2,481.9	2,937.8	0.00	0.00	0.00
8,700.0	90.00	91.95	6,930.0	-2,271.00	2,609.1	2,581.8	3,035.2	0.00	0.00	0.00
8,800.0	90.00	91.95	6,930.0	-2,271.00	2,605.7	2,681.8	3,132.6	0.00	0.00	0.00
8,900.0	90.00	91.95	6,930.0	-2,271.00	2,602.3	2,781.7	3,230.0	0.00	0.00	0.00
9,000.0	90.00	91.95	6,930.0	-2,271.00	2,598.9	2,881.6	3,327.5	0.00	0.00	0.00

Planning Report



Database:	EDM 5000.1 Single User Db	Local Co-ordinate Reference:	Well WAKE EAST 7N
Company:	EXTRACTION OIL & GAS	TVD Reference:	KB-EST @ 4659.0usft (Original Well Elev)
Project:	WELD COUNTY, COLORADO (NAD 83)	MD Reference:	KB-EST @ 4659.0usft (Original Well Elev)
Site:	SW SE SEC. 32 T6N R65W 6th P.M.	North Reference:	True
Well:	WAKE EAST 7N	Survey Calculation Method:	Minimum Curvature
Wellbore:	ORIGINAL WELLBORE		
Design:	PROPOSAL #1		

Planned Survey										
MD (usft)	Inc (°)	Azi (°)	TVD (usft)	SS (usft)	+N/-S (usft)	+E/-W (usft)	Vertical Section (usft)	Dogleg Rate (°/100usft)	Build Rate (°/100usft)	Turn Rate (°/100usft)
9,100.0	90.00	91.95	6,930.0	-2,271.00	2,595.5	2,981.6	3,424.9	0.00	0.00	0.00
9,200.0	90.00	91.95	6,930.0	-2,271.00	2,592.1	3,081.5	3,522.3	0.00	0.00	0.00
9,300.0	90.00	91.95	6,930.0	-2,271.00	2,588.7	3,181.5	3,619.7	0.00	0.00	0.00
9,400.0	90.00	91.95	6,930.0	-2,271.00	2,585.3	3,281.4	3,717.2	0.00	0.00	0.00
9,500.0	90.00	91.95	6,930.0	-2,271.00	2,581.9	3,381.3	3,814.6	0.00	0.00	0.00
9,600.0	90.00	91.95	6,930.0	-2,271.00	2,578.5	3,481.3	3,912.0	0.00	0.00	0.00
9,700.0	90.00	91.95	6,930.0	-2,271.00	2,575.2	3,581.2	4,009.4	0.00	0.00	0.00
9,800.0	90.00	91.95	6,930.0	-2,271.00	2,571.8	3,681.2	4,106.9	0.00	0.00	0.00
9,900.0	90.00	91.95	6,930.0	-2,271.00	2,568.4	3,781.1	4,204.3	0.00	0.00	0.00
10,000.0	90.00	91.95	6,930.0	-2,271.00	2,565.0	3,881.1	4,301.7	0.00	0.00	0.00
10,100.0	90.00	91.95	6,930.0	-2,271.00	2,561.6	3,981.0	4,399.1	0.00	0.00	0.00
10,200.0	90.00	91.95	6,930.0	-2,271.00	2,558.2	4,080.9	4,496.6	0.00	0.00	0.00
10,300.0	90.00	91.95	6,930.0	-2,271.00	2,554.8	4,180.9	4,594.0	0.00	0.00	0.00
10,400.0	90.00	91.95	6,930.0	-2,271.00	2,551.4	4,280.8	4,691.4	0.00	0.00	0.00
10,500.0	90.00	91.95	6,930.0	-2,271.00	2,548.0	4,380.8	4,788.8	0.00	0.00	0.00
10,600.0	90.00	91.95	6,930.0	-2,271.00	2,544.6	4,480.7	4,886.3	0.00	0.00	0.00
10,700.0	90.00	91.95	6,930.0	-2,271.00	2,541.2	4,580.7	4,983.7	0.00	0.00	0.00
10,800.0	90.00	91.95	6,930.0	-2,271.00	2,537.8	4,680.6	5,081.1	0.00	0.00	0.00
10,900.0	90.00	91.95	6,930.0	-2,271.00	2,534.4	4,780.5	5,178.6	0.00	0.00	0.00
11,000.0	90.00	91.95	6,930.0	-2,271.00	2,531.0	4,880.5	5,276.0	0.00	0.00	0.00
11,100.0	90.00	91.95	6,930.0	-2,271.00	2,527.6	4,980.4	5,373.4	0.00	0.00	0.00
11,200.0	90.00	91.95	6,930.0	-2,271.00	2,524.2	5,080.4	5,470.8	0.00	0.00	0.00
11,300.0	90.00	91.95	6,930.0	-2,271.00	2,520.8	5,180.3	5,568.3	0.00	0.00	0.00
11,400.0	90.00	91.95	6,930.0	-2,271.00	2,517.4	5,280.3	5,665.7	0.00	0.00	0.00
11,500.0	90.00	91.95	6,930.0	-2,271.00	2,514.0	5,380.2	5,763.1	0.00	0.00	0.00
11,600.0	90.00	91.95	6,930.0	-2,271.00	2,510.6	5,480.1	5,860.5	0.00	0.00	0.00
11,700.0	90.00	91.95	6,930.0	-2,271.00	2,507.2	5,580.1	5,958.0	0.00	0.00	0.00
11,800.0	90.00	91.95	6,930.0	-2,271.00	2,503.8	5,680.0	6,055.4	0.00	0.00	0.00
11,900.0	90.00	91.95	6,930.0	-2,271.00	2,500.4	5,780.0	6,152.8	0.00	0.00	0.00
12,000.0	90.00	91.95	6,930.0	-2,271.00	2,497.0	5,879.9	6,250.2	0.00	0.00	0.00
12,100.0	90.00	91.95	6,930.0	-2,271.00	2,493.6	5,979.8	6,347.7	0.00	0.00	0.00
12,200.0	90.00	91.95	6,930.0	-2,271.00	2,490.2	6,079.8	6,445.1	0.00	0.00	0.00
12,300.0	90.00	91.95	6,930.0	-2,271.00	2,486.8	6,179.7	6,542.5	0.00	0.00	0.00
12,400.0	90.00	91.95	6,930.0	-2,271.00	2,483.4	6,279.7	6,639.9	0.00	0.00	0.00
12,500.0	90.00	91.95	6,930.0	-2,271.00	2,480.0	6,379.6	6,737.4	0.00	0.00	0.00
12,600.0	90.00	91.95	6,930.0	-2,271.00	2,476.6	6,479.6	6,834.8	0.00	0.00	0.00
12,700.0	90.00	91.95	6,930.0	-2,271.00	2,473.2	6,579.5	6,932.2	0.00	0.00	0.00
12,800.0	90.00	91.95	6,930.0	-2,271.00	2,469.8	6,679.4	7,029.6	0.00	0.00	0.00
12,900.0	90.00	91.95	6,930.0	-2,271.00	2,466.4	6,779.4	7,127.1	0.00	0.00	0.00
13,000.0	90.00	91.95	6,930.0	-2,271.00	2,463.0	6,879.3	7,224.5	0.00	0.00	0.00
13,100.0	90.00	91.95	6,930.0	-2,271.00	2,459.6	6,979.3	7,321.9	0.00	0.00	0.00
13,200.0	90.00	91.95	6,930.0	-2,271.00	2,456.2	7,079.2	7,419.3	0.00	0.00	0.00
13,300.0	90.00	91.95	6,930.0	-2,271.00	2,452.8	7,179.2	7,516.8	0.00	0.00	0.00
13,400.0	90.00	91.95	6,930.0	-2,271.00	2,449.4	7,279.1	7,614.2	0.00	0.00	0.00
13,500.0	90.00	91.95	6,930.0	-2,271.00	2,446.0	7,379.0	7,711.6	0.00	0.00	0.00
13,600.0	90.00	91.95	6,930.0	-2,271.00	2,442.6	7,479.0	7,809.0	0.00	0.00	0.00
13,700.0	90.00	91.95	6,930.0	-2,271.00	2,439.2	7,578.9	7,906.5	0.00	0.00	0.00
13,800.0	90.00	91.95	6,930.0	-2,271.00	2,435.8	7,678.9	8,003.9	0.00	0.00	0.00
13,900.0	90.00	91.95	6,930.0	-2,271.00	2,432.4	7,778.8	8,101.3	0.00	0.00	0.00
14,000.0	90.00	91.95	6,930.0	-2,271.00	2,429.0	7,878.7	8,198.7	0.00	0.00	0.00
14,100.0	90.00	91.95	6,930.0	-2,271.00	2,425.6	7,978.7	8,296.2	0.00	0.00	0.00
14,200.0	90.00	91.95	6,930.0	-2,271.00	2,422.2	8,078.6	8,393.6	0.00	0.00	0.00
14,300.0	90.00	91.95	6,930.0	-2,271.00	2,418.8	8,178.6	8,491.0	0.00	0.00	0.00
14,400.0	90.00	91.95	6,930.0	-2,271.00	2,415.4	8,278.5	8,588.4	0.00	0.00	0.00

Database:	EDM 5000.1 Single User Db	Local Co-ordinate Reference:	Well WAKE EAST 7N
Company:	EXTRACTION OIL & GAS	TVD Reference:	KB-EST @ 4659.0usft (Original Well Elev)
Project:	WELD COUNTY, COLORADO (NAD 83)	MD Reference:	KB-EST @ 4659.0usft (Original Well Elev)
Site:	SW SE SEC. 32 T6N R65W 6th P.M.	North Reference:	True
Well:	WAKE EAST 7N	Survey Calculation Method:	Minimum Curvature
Wellbore:	ORIGINAL WELLBORE		
Design:	PROPOSAL #1		

Planned Survey

MD (usft)	Inc (°)	Azi (°)	TVD (usft)	SS (usft)	+N/-S (usft)	+E/-W (usft)	Vertical Section (usft)	Dogleg Rate (°/100usft)	Build Rate (°/100usft)	Turn Rate (°/100usft)
14,500.0	90.00	91.95	6,930.0	-2,271.00	2,412.0	8,378.5	8,685.9	0.00	0.00	0.00
14,600.0	90.00	91.95	6,930.0	-2,271.00	2,408.6	8,478.4	8,783.3	0.00	0.00	0.00
14,700.0	90.00	91.95	6,930.0	-2,271.00	2,405.2	8,578.3	8,880.7	0.00	0.00	0.00
14,800.0	90.00	91.95	6,930.0	-2,271.00	2,401.8	8,678.3	8,978.1	0.00	0.00	0.00
14,900.0	90.00	91.95	6,930.0	-2,271.00	2,398.4	8,778.2	9,075.6	0.00	0.00	0.00
15,000.0	90.00	91.95	6,930.0	-2,271.00	2,395.0	8,878.2	9,173.0	0.00	0.00	0.00
15,100.0	90.00	91.95	6,930.0	-2,271.00	2,391.6	8,978.1	9,270.4	0.00	0.00	0.00
15,200.0	90.00	91.95	6,930.0	-2,271.00	2,388.2	9,078.1	9,367.8	0.00	0.00	0.00
15,300.0	90.00	91.95	6,930.0	-2,271.00	2,384.8	9,178.0	9,465.3	0.00	0.00	0.00
15,400.0	90.00	91.95	6,930.0	-2,271.00	2,381.4	9,277.9	9,562.7	0.00	0.00	0.00
15,500.0	90.00	91.95	6,930.0	-2,271.00	2,378.0	9,377.9	9,660.1	0.00	0.00	0.00
15,600.0	90.00	91.95	6,930.0	-2,271.00	2,374.6	9,477.8	9,757.5	0.00	0.00	0.00
15,700.0	90.00	91.95	6,930.0	-2,271.00	2,371.2	9,577.8	9,855.0	0.00	0.00	0.00
15,800.0	90.00	91.95	6,930.0	-2,271.00	2,367.8	9,677.7	9,952.4	0.00	0.00	0.00
15,900.0	90.00	91.95	6,930.0	-2,271.00	2,364.4	9,777.7	10,049.8	0.00	0.00	0.00
16,000.0	90.00	91.95	6,930.0	-2,271.00	2,361.0	9,877.6	10,147.2	0.00	0.00	0.00
16,100.0	90.00	91.95	6,930.0	-2,271.00	2,357.6	9,977.5	10,244.7	0.00	0.00	0.00
16,200.0	90.00	91.95	6,930.0	-2,271.00	2,354.2	10,077.5	10,342.1	0.00	0.00	0.00
16,300.0	90.00	91.95	6,930.0	-2,271.00	2,350.8	10,177.4	10,439.5	0.00	0.00	0.00
16,400.0	90.00	91.95	6,930.0	-2,271.00	2,347.4	10,277.4	10,536.9	0.00	0.00	0.00
16,500.0	90.00	91.95	6,930.0	-2,271.00	2,344.0	10,377.3	10,634.4	0.00	0.00	0.00
16,600.0	90.00	91.95	6,930.0	-2,271.00	2,340.6	10,477.2	10,731.8	0.00	0.00	0.00
16,700.0	90.00	91.95	6,930.0	-2,271.00	2,337.2	10,577.2	10,829.2	0.00	0.00	0.00
16,800.0	90.00	91.95	6,930.0	-2,271.00	2,333.8	10,677.1	10,926.6	0.00	0.00	0.00
16,900.0	90.00	91.95	6,930.0	-2,271.00	2,330.4	10,777.1	11,024.1	0.00	0.00	0.00
17,000.0	90.00	91.95	6,930.0	-2,271.00	2,327.0	10,877.0	11,121.5	0.00	0.00	0.00
17,100.0	90.00	91.95	6,930.0	-2,271.00	2,323.6	10,977.0	11,218.9	0.00	0.00	0.00
17,200.0	90.00	91.95	6,930.0	-2,271.00	2,320.2	11,076.9	11,316.3	0.00	0.00	0.00
17,300.0	90.00	91.95	6,930.0	-2,271.00	2,316.8	11,176.8	11,413.8	0.00	0.00	0.00
17,400.0	90.00	91.95	6,930.0	-2,271.00	2,313.5	11,276.8	11,511.2	0.00	0.00	0.00
17,500.0	90.00	91.95	6,930.0	-2,271.00	2,310.1	11,376.7	11,608.6	0.00	0.00	0.00
17,600.0	90.00	91.95	6,930.0	-2,271.00	2,306.7	11,476.7	11,706.0	0.00	0.00	0.00
17,700.0	90.00	91.95	6,930.0	-2,271.00	2,303.3	11,576.6	11,803.5	0.00	0.00	0.00
17,800.0	90.00	91.95	6,930.0	-2,271.00	2,299.9	11,676.6	11,900.9	0.00	0.00	0.00
BHL: 1651ft FNL & 460ft FEL of Sec 34										
17,855.3	90.00	91.95	6,930.0	-2,271.00	2,298.0	11,731.8	11,954.8	0.00	0.00	0.00

Formations

MD (usft)	TVD (usft)	Name	Lithology	Dip (°)	Dip Direction (°)
3,766.6	3,600.0	PARKMAN			
4,432.7	4,140.0	SUSSEX			
5,098.8	4,680.0	SHANNON			
7,751.1	6,800.0	NIOBRARA			

Database:	EDM 5000.1 Single User Db	Local Co-ordinate Reference:	Well WAKE EAST 7N
Company:	EXTRACTION OIL & GAS	TVD Reference:	KB-EST @ 4659.0usft (Original Well Elev)
Project:	WELD COUNTY, COLORADO (NAD 83)	MD Reference:	KB-EST @ 4659.0usft (Original Well Elev)
Site:	SW SE SEC. 32 T6N R65W 6th P.M.	North Reference:	True
Well:	WAKE EAST 7N	Survey Calculation Method:	Minimum Curvature
Wellbore:	ORIGINAL WELLBORE		
Design:	PROPOSAL #1		

Plan Annotations

MD (usft)	TVD (usft)	Local Coordinates		Comment
		+N/-S (usft)	+E/-W (usft)	
0.0	0.0	0.0	0.0	SHL: 854ft FSL & 1636ft FEL of Sec 32
1,700.0	1,700.0	0.0	0.0	START NUDGE (2°/100ft BUR)
3,491.8	3,377.3	460.9	285.9	EOB TO 35.84° INC
7,449.8	6,586.0	2,430.1	1,507.4	KOP (10°/100ft DGLG)
8,180.3	6,930.0	2,626.8	2,062.4	HZ LP: 1608ft FNL & 460ft FWL of Sec 33
17,855.3	6,930.0	2,298.0	11,731.8	BHL: 1651ft FNL & 460ft FEL of Sec 34