

### LAND SURVEYOR'S CERTIFICATION

LAMP, RYNEARSON & ASSOCIATES, INC., OF FT. COLLINS, COLORADO HAS, IN ACCORDANCE WITH A REQUEST FROM ERIN MATHEWS FOR EXTRACTION OIL AND GAS, DETERMINED THE SURFACE LOCATION OF THE WELL DESIGNATED AS WAKE EAST 7N TO BE 854' FROM THE SOUTH LINE AND 1636' FROM THE EAST LINE OF SECTION 32, TOWNSHIP 6 NORTH, RANGE 65 WEST OF THE 6TH P.M., WELD COUNTY, COLORADO.

PETER ELLIOTT PAULUS  
COLORADO PLS 38318

DATE OF SURVEY: 07/08/2009, 02/09/2017 (SECTION CONTROL)  
DATE OF SURVEY: 02/09/2017 (WELL LOCATION)



### NOTES:

1. DISTANCES ARE MEASURED PERPENDICULAR TO NEAREST SECTION LINE AND ARE SHOWN ON THE SAME SIDE OF THE SECTION LINE WHERE THE WELL IS LOCATED.
2. THIS MAP DOES NOT REPRESENT A MONUMENTED BOUNDARY SURVEY. SIXTEENTH CORNER LOCATIONS ARE COMPUTED, UNLESS OTHERWISE NOTED.
3. BOTTOM HOLE LOCATIONS AND HORIZONTAL COMPLETION ZONE PROVIDED BY OTHERS.

### BASIS OF BEARING:

THE SOUTH LINE OF THE SOUTHEAST QUARTER OF SECTION 32-T6N-R65W BEARS N85°52'57\"W BETWEEN THE SOUTHEAST CORNER OF SECTION 32 MONUMENTED WITH A 2 1/2\" A.C. IN R.B. STAMPED \"LS 17500\" AND THE SOUTH QUARTER CORNER OF SECTION 32 MONUMENTED WITH A 3 1/4\" A.C. IN R.B. STAMPED \"LS 28259\" BASED ON THE COLORADO STATE PLANE COORDINATE SYSTEM, NORTH ZONE 0501.

ELEVATIONS ARE NAVD 88, USING THE CONUS GEOID 03 AS OBSERVED FROM GPS OBSERVATIONS



**LAMP RYNEARSON**  
& ASSOCIATES

4715 Innovation Drive 970.226.0342 | P  
Fort Collins, CO 80525 970.226.0879 | F  
www.LRA-Inc.com

PROPOSED WELL LOCATION EXHIBIT  
WAKE EAST 7N  
1 OF 3

DRAWN BY  
JJM  
PATH/FILENAME

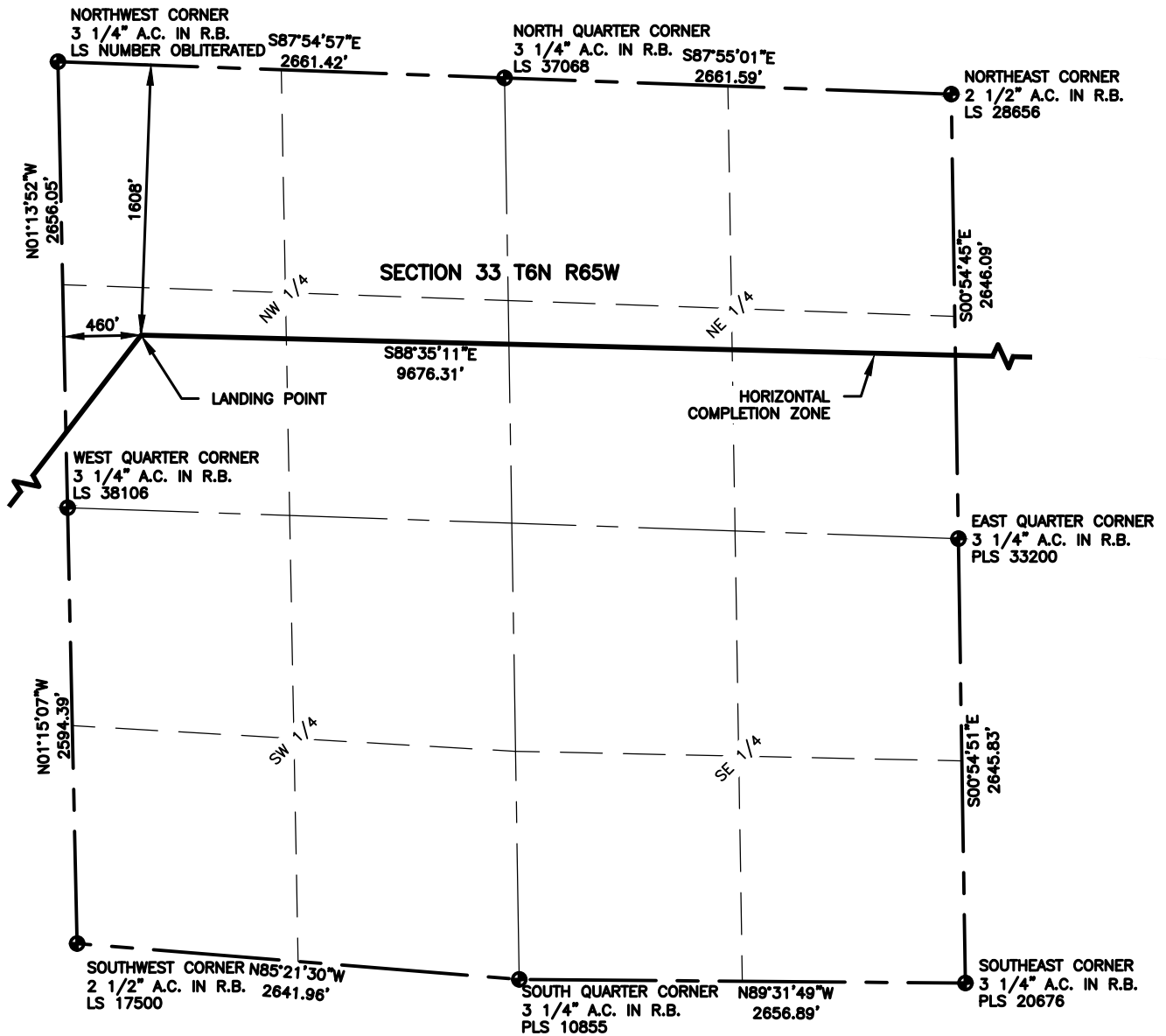
DATE  
2/17/17  
P:\Engineering\0215045.02 Extraction Wake East\SURVEY\DRAWINGS\EXHIBITS\0215045.02

COGCC ID

PROJECT - TASK NUMBER

BOOK AND PAGE  
MRI-05 34-36

SURFACE - LOCATION  
SW1/4, SE1/4, SEC 32, T6N,  
R65W

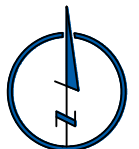


#### NOTES:

- DISTANCES ARE MEASURED PERPENDICULAR TO NEAREST SECTION LINE AND ARE SHOWN ON THE SAME SIDE OF THE SECTION LINE WHERE THE WELL IS LOCATED.
- THIS MAP DOES NOT REPRESENT A MONUMENTED BOUNDARY SURVEY. SIXTEENTH CORNER LOCATIONS ARE COMPUTED, UNLESS OTHERWISE NOTED.
- BOTTOM HOLE LOCATIONS AND HORIZONTAL COMPLETION ZONE PROVIDED BY OTHERS.

#### LEGEND

- ALIQUOT CORNER
- BOTTOM HOLE
- ⊕ PROPOSED WELL
- A.C. ALUMINUM CAP
- R.B. RANGE BOX
- REB. REBAR



0 1000

SCALE: 1" = 1000'  
U.S. SURVEY FEET



**LAMP RYNEARSON**  
& ASSOCIATES

4715 Innovation Drive 970.226.0342 | P  
Fort Collins, CO 80525 970.226.0879 | F  
www.LRA-Inc.com

PROPOSED WELL LOCATION EXHIBIT  
WAKE EAST 7N  
2 OF 3

DRAWN BY  
JJM  
PATHFILENAME

DATE  
2/17/17  
P:\Engineering\0215045.02 Extraction Wake East\SURVEY\DRAWINGS\EXHIBITS\0215045.02 WDO7B.dwg

COGCC ID

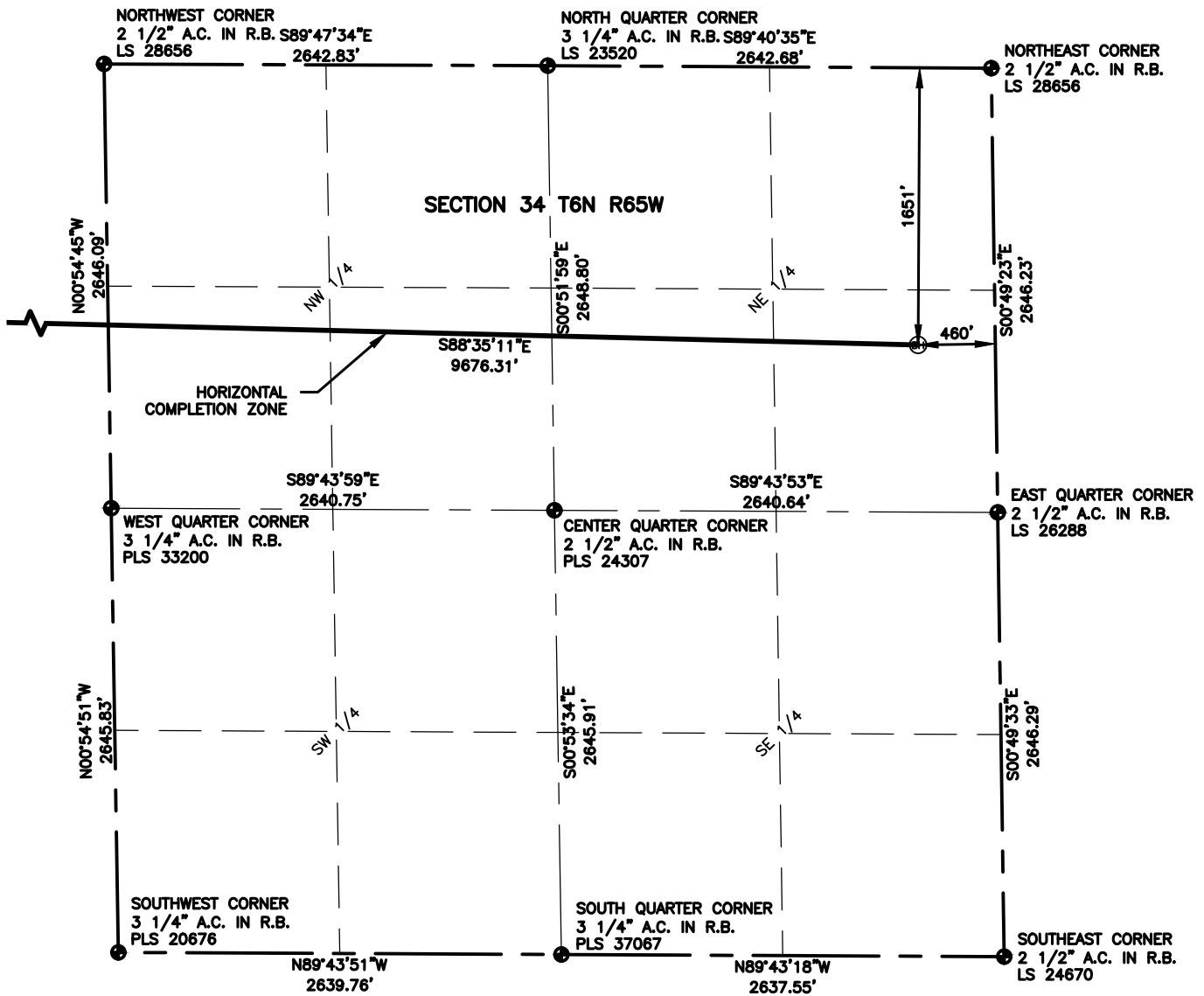
PROJECT - TASK NUMBER

BOOK AND PAGE

MRI-05 34-36

SURFACE - LOCATION

SW1/4, SE1/4, SEC 32, T6N,  
R65W

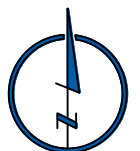


#### NOTES:

- DISTANCES ARE MEASURED PERPENDICULAR TO NEAREST SECTION LINE AND ARE SHOWN ON THE SAME SIDE OF THE SECTION LINE WHERE THE WELL IS LOCATED.
- THIS MAP DOES NOT REPRESENT A MONUMENTED BOUNDARY SURVEY. SIXTEENTH CORNER LOCATIONS ARE COMPUTED, UNLESS OTHERWISE NOTED.
- BOTTOM HOLE LOCATIONS AND HORIZONTAL COMPLETION ZONE PROVIDED BY OTHERS.

#### LEGEND

- ALIQUOT CORNER
- BOTTOM HOLE
- ⊙ PROPOSED WELL
- A.C. ALUMINUM CAP
- R.B. RANGE BOX
- REB. REBAR



0 1000

SCALE: 1" = 1000'  
U.S. SURVEY FEET



4715 Innovation Drive 970.226.0342 | P  
Fort Collins, CO 80525 970.226.0879 | F  
www.LRA-Inc.com

PROPOSED WELL LOCATION EXHIBIT  
WAKE EAST 7N  
3 OF 3

DRAWN BY	DATE	COGCC ID	PROJECT - TASK NUMBER	BOOK AND PAGE
JJM	2/17/17	0215045.02	0215045.02	MRI-05 34-36
PATH\FILENAME	P:\_Engineering\0215045.02 Extraction Wake East\SURVEY\DRAWINGS\EXHIBITS\0215045.02			

**SURFACE - LOCATION**  
SW1/4, SE1/4, SEC 32, T6N,  
R65W