

NOBLE ENERGY INC.
 Gunther B18-01
 NENE 18-5N-64W
 662 FNL & 659 FEL
 WELD COUNTY, CO
 Wattenberg
CURRENT WELLBORE SCHEMATIC
 with PROPOSED P&A
 3/17/2017

API: 05-123-15693
 COGCC #

GL Elev: 4619
 KB Elev: 4631

Spud Date: 5/1/1992

Surface Casing :
 8-5/8" 24# @ 370'
 Cement: 300 sx
 TOC: Surface

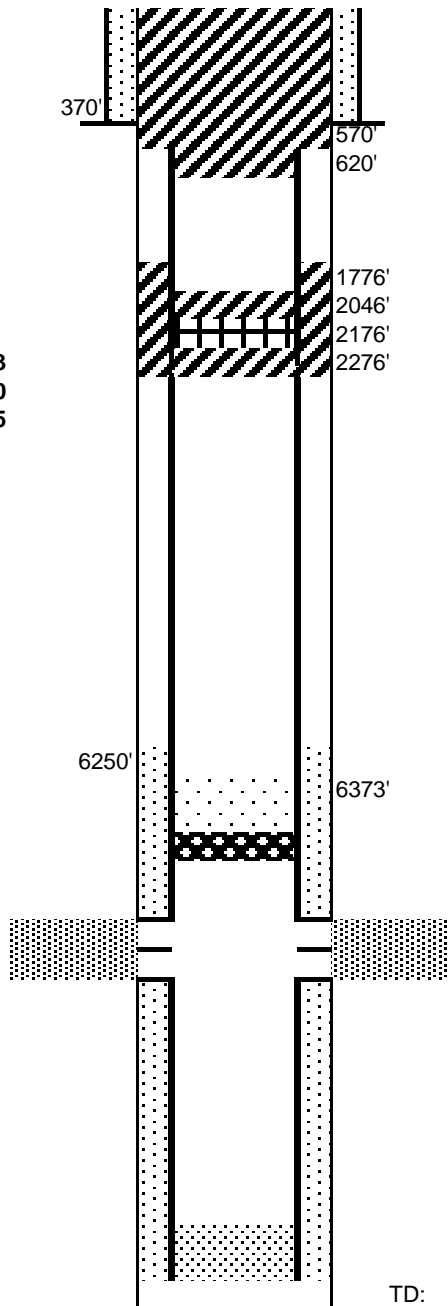
WW	103	303
SC	370	570
FH	255	455

No Sussex within 1 mile

TOC @ 6250'

Nio Log Top: 6573'

Production Casing :
 2-7/8" 6.5# N-80 @ 7,002'
 Cement: 220 sx
 TD: 4/27/1992



Cut surface casing off 6'-8' below surface.

Cement to surface with 215 sx @ 620'

Pump 225 sx thru and 2 bbls (10 sx) on top
 Set CICR @ 2,176'
 Perforate csg @ 2,276'

CIBP @ 6,817' w/ 15 sx on top

Codell Perforations: 6,867'-6,882'

TD: 7035