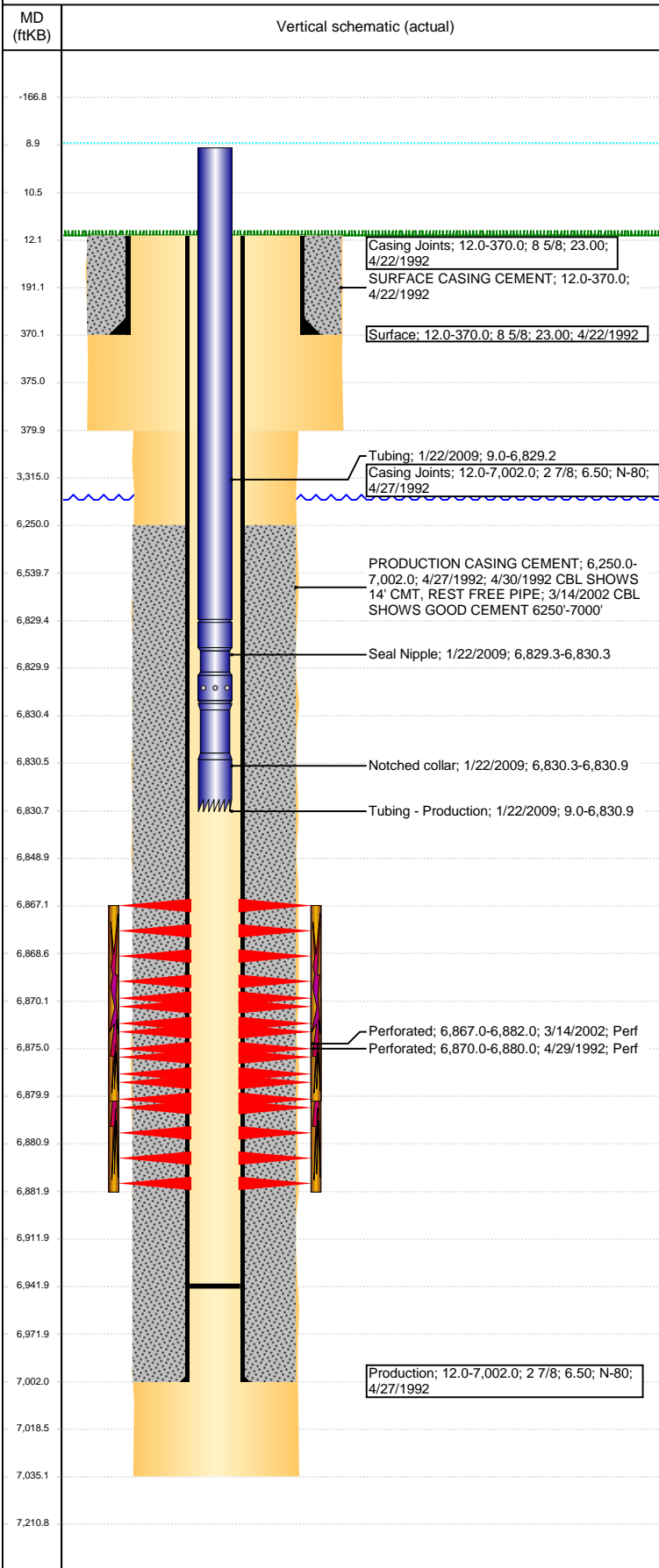


Well Name: GUNTHER B18-01

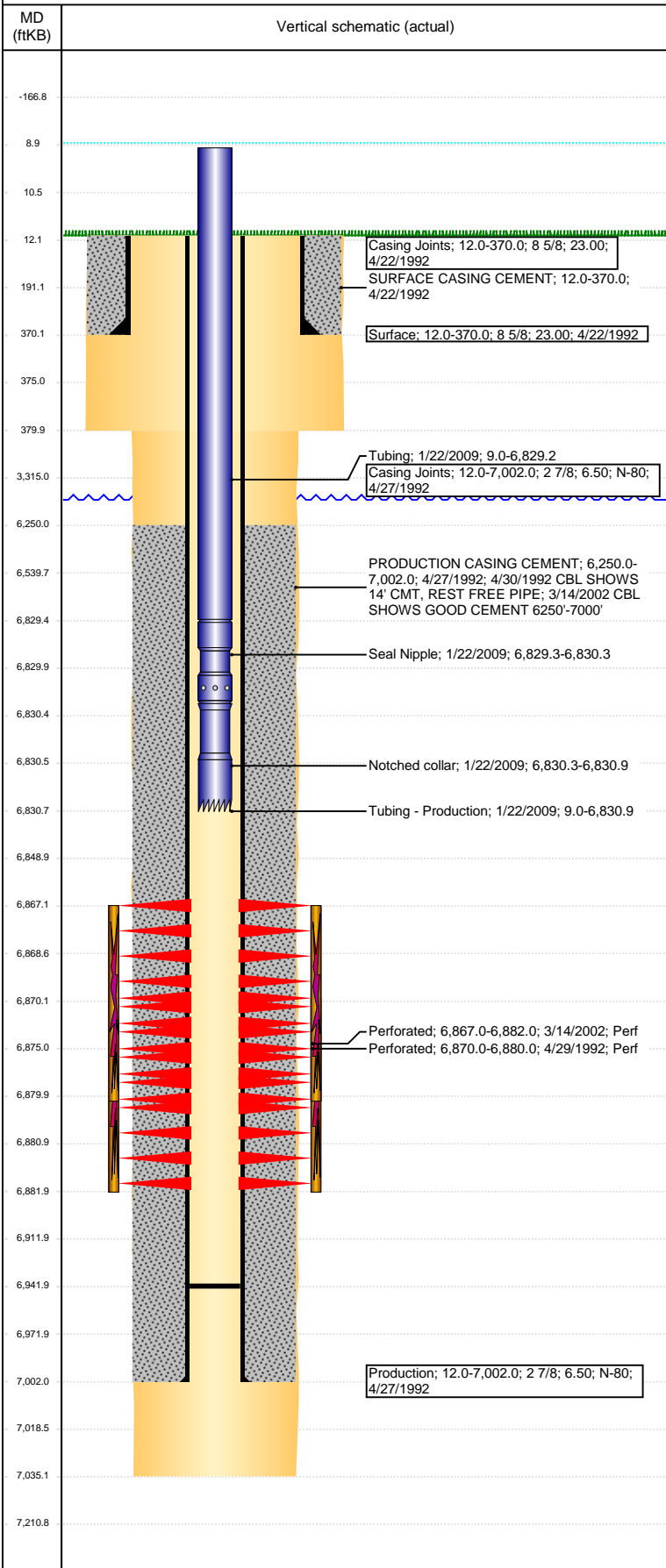
VERTICAL - ORIGINAL HOLE, 4/12/2017 1:34:11 PM



Well Header							
API	05-123-15693	Business Unit	DJ BASIN	District	15	Well Config	VERTICAL
Original KB Elevation (ft)	4,631	KB - GL / MSL (ftKB)	12.00	Spud Date	4/22/1992	P & A Date	
Comment							
Directions To Well							
WCR 58 & 51, WEST 2/10, SOUTH INTO							
Congressional Location							
Quarter 3	Quarter 4	Section	Township	TwNS Dir	Range	Range E/W Dir	
NE	NE	18	5	N	64	W	
Bottom Hole Location							
North-South Distance (ft)		From N or S Line		East-West Distance (ft)		From E or W Line	
Plug Back Total Depths							
Date	Depth (ftKB)	Method		Com			
4/27/1992	6,942.0	CASING TALLY		DEPTH LOGGER ON CBL			
4/30/1992	6,942.0	CASED HOLE LOG					
1/22/2009	6,942.0	TAG					
Wellbore Sections							
Section Des		Size (in)	Act Top, MD (ftKB)		Act Btm, MD (ftKB)		
SURFACE		12 1/4	12		380		
PRODUCTION		7 7/8	380		7,035		
Zone Statuses							
Zone Name	Status Date	Status	Fluid Type	Job	Prod Method		
CODELL	6/19/1992	PR	Oil	DRILLING/CO...			
CODELL	3/23/2002	PR	Oil	RE-FRAC, 3/12...			
CODELL	3/3/2009	PR	Oil	TRI-FRAC, 12/...			
Casing Strings							
Surface, 370.0ftKB							
Casing Description	Run Date	OD (in)	Wt/Len (l...)	Grade	Top, MD (ft...)	MD (ftKB)	
Surface	4/22/1992	8 5/8	23.00		12.0	370.0	
Production, 7,002.0ftKB							
Casing Description	Run Date	OD (in)	Wt/Len (l...)	Grade	Top, MD (ft...)	MD (ftKB)	
Production	4/27/1992	2 7/8	6.50	N-80	12.0	7,002.0	
Cement							
Description	SURFACE CASING CEMENT				Top Depth (ftKB)	Bottom Depth (ftKB)	
					12.0	370.0	
Description	PRODUCTION CASING CEMENT				Top Depth (ftKB)	Bottom Depth (ftKB)	
					6,250.0	7,002.0	
Tubing Strings							
Tubing Description	Run Date	String...	ID (in)	Wt (lb/ft)	Grade	Len (ft)	Set De...
Tubing - Production	10/2/2002	1.66	1.38	2.33	J-55	6,828.00	
Tubing Description	Run Date	String...	ID (in)	Wt (lb/ft)	Grade	Len (ft)	Set De...
Tubing - Production	1/22/2009	1.66	1.38	2.30	J-55	6,821.85	
Tubing Components							
Item Des	OD (in)	Wt (lb/ft)	Grade	Jts	Len (ft)	Btm (ftKB)	Btm (TVD) (ftKB)
Tubing	1.66	2.30	J-55	212	6,820.25	6,829.3	
Seal Nipple	1.66			1	1.00	6,830.3	
Notched collar	1.66			1	0.60	6,830.9	
Other In Hole							
Run Date	Des			OD (in)	Top (ftKB)	Btm (ftKB)	
Logs							
Date	Type				Top, MD (ftKB)	Btm, MD (ftKB)	
4/26/1992	Compensated Density				6,840.0	7,060.0	
4/30/1992	Cement Bond				6,150.0	6,937.0	
3/14/2002	Cement Bond				6,090.0	6,500.0	
1/12/2016	GYRO				0.0	6,700.0	
Perforation Data							
Linked Zone	Bnch/St g	Sum of Entered Shot Total	Top (ftKB)	Btm (ftKB)	Date		
CODELL, ORIGINAL HOLE		60	6,867.00	6,882.00	3/14/2002		
CODELL, ORIGINAL HOLE		40	6,870.00	6,880.00	4/29/1992		
Total (Sum)		100					

Well Name: GUNTHER B18-01

VERTICAL - ORIGINAL HOLE, 4/12/2017 1:34:12 PM



Stimulation Intervals		
Start Date 5/1/1992	Primary Job Type DRILLING/COMPLETION - ORIGINAL	
Technical Result	Tech Result Details	Tech Result Note
Comment		
Start Date 3/21/2002	Primary Job Type RE-FRAC	
Technical Result	Tech Result Details	Tech Result Note
Comment		
Start Date 1/20/2009	Primary Job Type TRI-FRAC	
Technical Result Success	Tech Result Details According to Plan	Tech Result Note
<p>Comment</p> <p>PRE- ISIP = 3090 PSI, 5-MIN= 2765 PSI. PUMP KICKING OUT OF GEAR DURING 1.0 PPG WAS TOOK OFFLINE. LOOSE CIRCUIT BOARD ON THE ROSEMOUNT DURING 2.0 PPG SAND CAUSED THE DISCHARGE MAG FLOW METER TO SPIKE - WENT TO TURBINE. VISCOSITY RAN LOW THROUGHOUT WITH CORRECT GEL LOADING, WHICH WAS INCREASE AS NEEDED FROM 7.0 GPT TO 7.5 GPT - FOUND OUT ONE OF THE RECIRCULATING VALVES WAS CLOSED ON HYDRATION UNIT CAUSING THE LOW VISCOSITY. FLUSHED EVEN, POST-ISIP = 3427 PSI, 5-MIN = 2870 PSI.</p>		