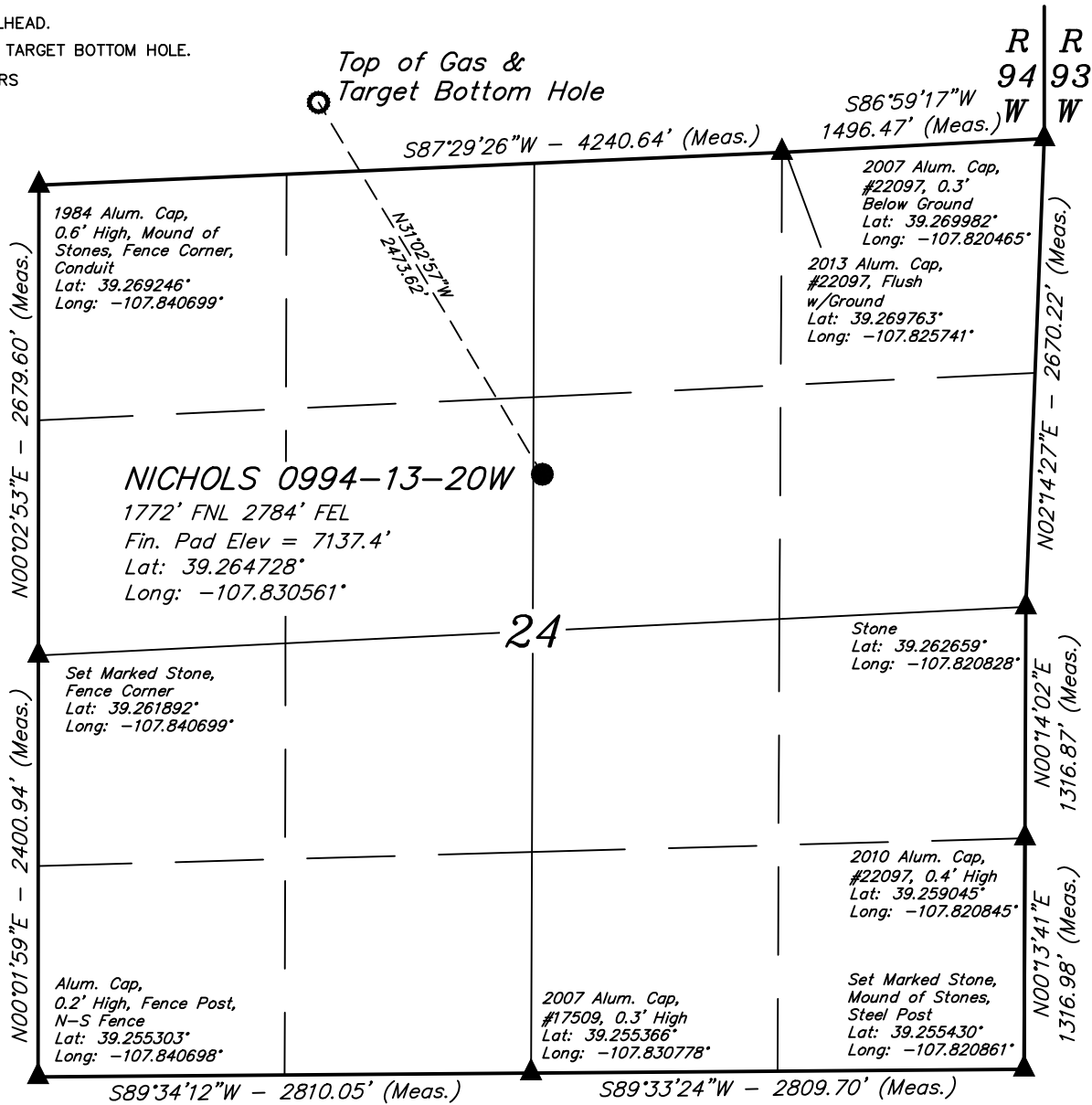


LEGEND:

- └─┘ = 90° SYMBOL
- = PROPOSED WELLHEAD.
- = TOP OF GAS & TARGET BOTTOM HOLE.
- ▲ = SECTION CORNERS LOCATED.

T9S, R94W, 6th P.M.

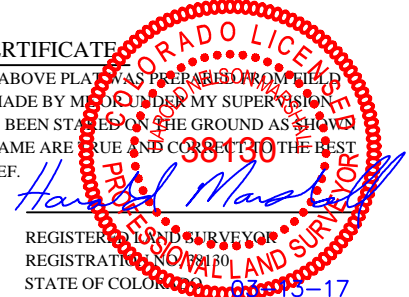


NOTE DISTANCE TO NEAREST:
 BUILDING: N46°E 2132'
 BUILDING UNIT: OVER A MILE
 HOBUS: OVER A MILE
 DOAA: OVER A MILE
 PUBLIC ROAD: N03°W 318'
 ABOVE GROUND UTILITY: N05°W 355'
 RAILROAD: OVER A MILE
 PROPERTY LINE: N03°W 441'

NOTE:
 1.) All latitudes and longitudes are given in NAD 83 coordinates.
 2.) Distances to nearest section lines are measured perpendicularly.

CERTIFICATE

THIS IS TO CERTIFY THAT THE ABOVE PLAT WAS PREPARED FROM FIELD NOTES OF ACTUAL SURVEYS MADE BY ME OR UNDER MY SUPERVISION AND THAT THE LOCATION HAS BEEN STAKED ON THE GROUND AS SHOWN ON THE PLAT AND THAT THE SAME ARE TRUE AND CORRECT TO THE BEST OF MY KNOWLEDGE AND BELIEF.



REGISTERED LAND SURVEYOR
 REGISTRATION NO. 38190
 STATE OF COLORADO 03-17

PDOP = 1.6



BASIS OF BEARINGS
 BASIS OF BEARINGS IS A G.P.S. OBSERVATION

BASIS OF ELEVATION

BENCH MARK (19 RDS) LOCATED IN THE SE 1/4 OF SECTION 16, T9S, R93W, 6th P.M., TAKEN FROM THE SOUTH MAMM PEAK, QUADRANGLE, COLORADO, 7.5 MINUTE QUAD. (TOPOGRAPHIC MAP) PUBLISHED BY THE UNITED STATES DEPARTMENT OF THE INTERIOR, GEOLOGICAL SURVEY. SAID ELEVATION IS MARKED AS BEING 7252 FEET.

UELS, LLC

Corporate Office * 85 South 200 East
 Vernal, UT 84078 * (435) 789-1017



LARAMIE ENERGY, LLC

NICHOLS 0994-13-20W (SURFACE LOCATION)
 SW 1/4 NE 1/4, SECTION 24, T9S, R94W, 6th P.M.
 MESA COUNTY, COLORADO

SURVEYED BY	CODY RICH, B.H.	08-30-16	SCALE
DRAWN BY	S.S.	03-01-17	1" = 1000'

WELL LOCATION PLAT

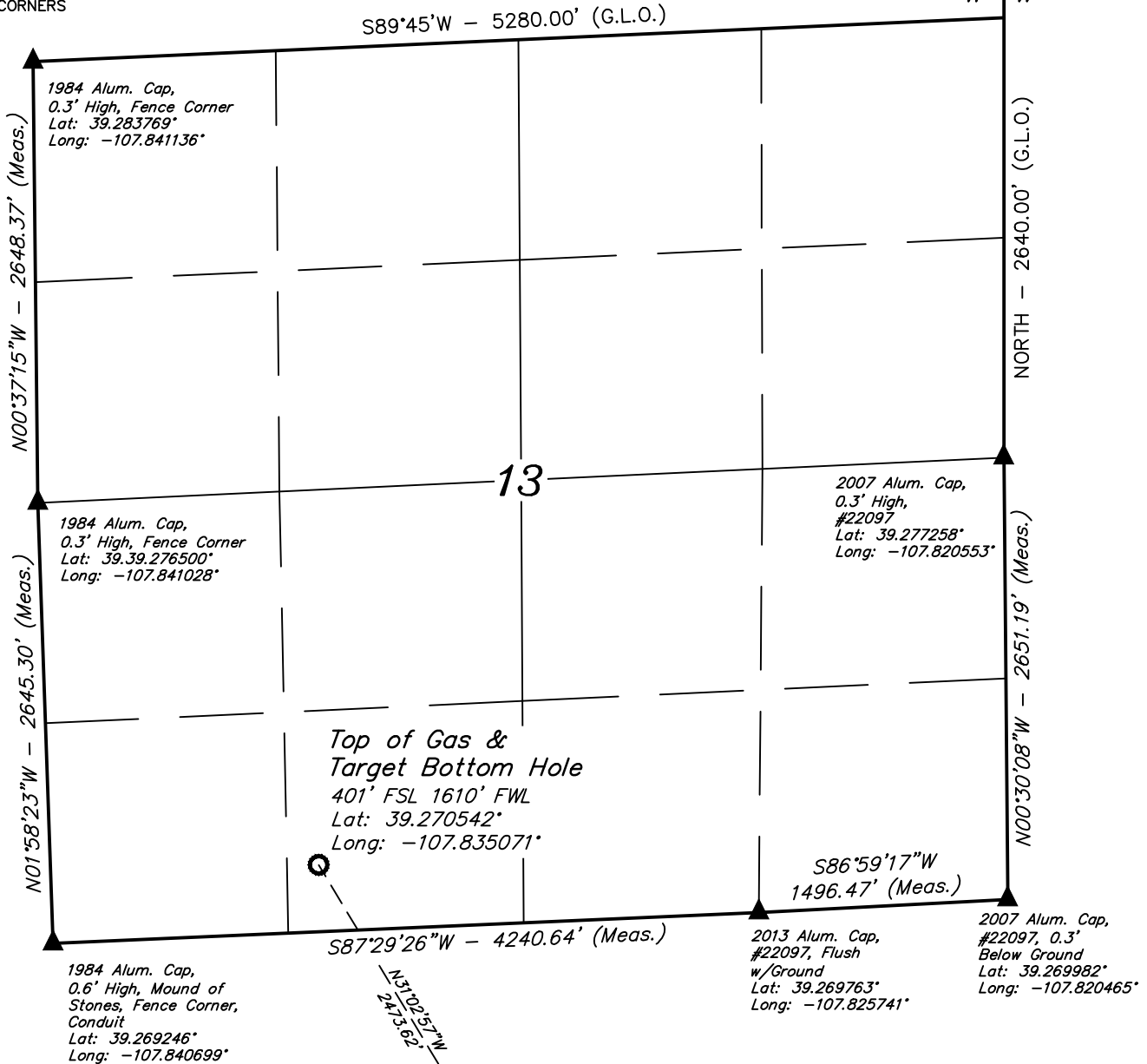


LEGEND:

- └─ = 90° SYMBOL
- = PROPOSED WELLHEAD.
- = TOP OF GAS & TARGET BOTTOM HOLE.
- ▲ = SECTION CORNERS LOCATED.

T9S, R94W, 6th P.M.

R 94 W
R 93 W



NICHOLS 0994-13-20W ●
SURFACE LOCATION

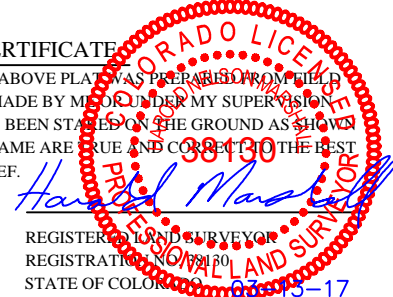
NOTE:

- 1.) All latitudes and longitudes are given in NAD 83 coordinates.
- 2.) Distances to nearest section lines are measured perpendicularly.



CERTIFICATE

THIS IS TO CERTIFY THAT THE ABOVE PLAT WAS PREPARED FROM FIELD NOTES OF ACTUAL SURVEYS MADE BY ME OR UNDER MY SUPERVISION AND THAT THE LOCATION HAS BEEN STAKED ON THE GROUND AS SHOWN ON THE PLAT AND THAT THE SAME ARE TRUE AND CORRECT TO THE BEST OF MY KNOWLEDGE AND BELIEF.



BASIS OF BEARINGS
BASIS OF BEARINGS IS A G.P.S. OBSERVATION

BASIS OF ELEVATION
BENCH MARK (19 RDS) LOCATED IN THE SE 1/4 OF SECTION 16, T9S, R93W, 6th P.M., TAKEN FROM THE SOUTH MAMM PEAK, QUADRANGLE, COLORADO, 7.5 MINUTE QUAD. (TOPOGRAPHIC MAP) PUBLISHED BY THE UNITED STATES DEPARTMENT OF THE INTERIOR, GEOLOGICAL SURVEY. SAID ELEVATION IS MARKED AS BEING 7252 FEET.



UELS, LLC
Corporate Office * 85 South 200 East
Vernal, UT 84078 * (435) 789-1017



LARAMIE ENERGY, LLC

NICHOLS 0994-13-20W (TARGET BOTTOM HOLE)
SE 1/4 SW 1/4, SECTION 13, T9S, R94W, 6th P.M.
MESA COUNTY, COLORADO

SURVEYED BY	CODY RICH, B.H.	08-30-16	SCALE
DRAWN BY	S.S.	03-01-17	1" = 1000'

WELL LOCATION PLAT