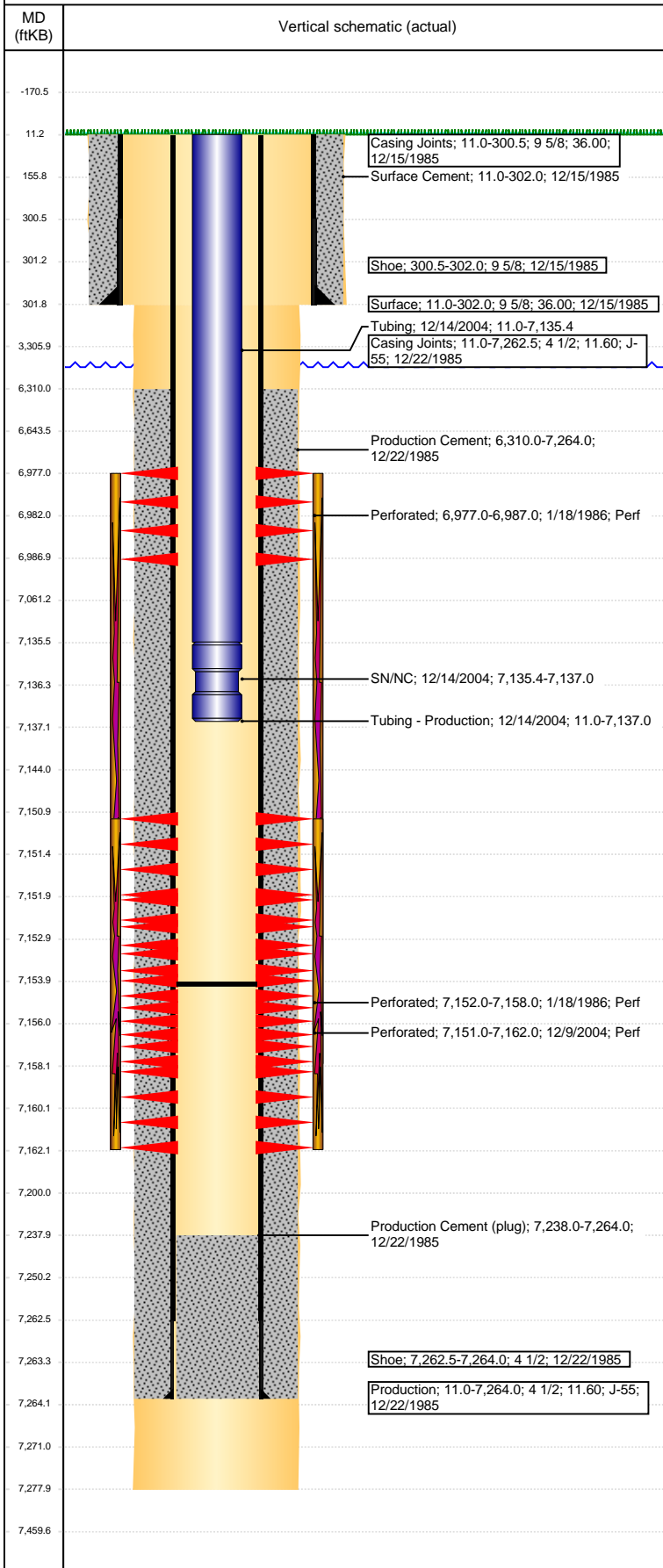


Well Name: HAROLD B01-21

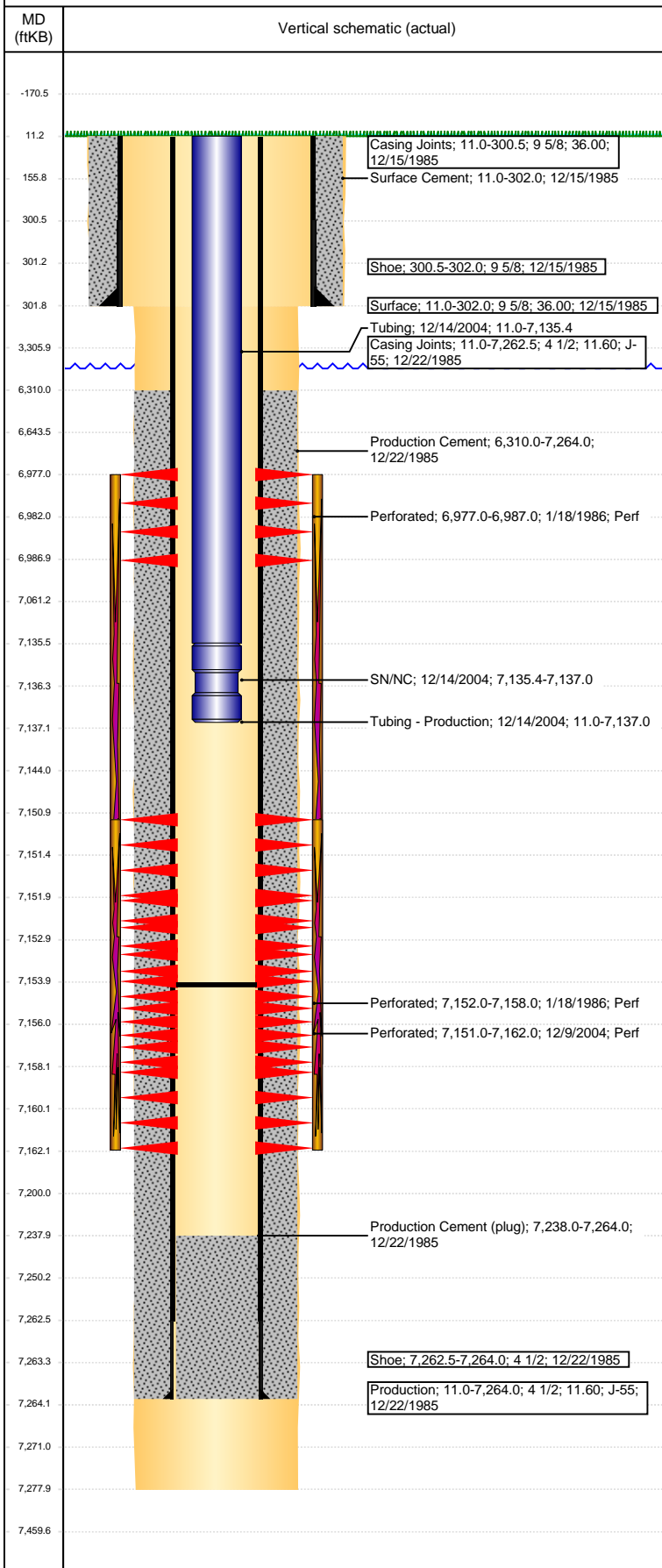
VERTICAL - ORIGINAL HOLE, 4/12/2017 11:43:19 AM



Well Header									
API 05-123-12905		Business Unit DJ BASIN		District 15		Well Config VERTICAL			
Original KB Elevation (ft) 4,756		KB - GL / MSL (ftKB) 11.00		Spud Date 12/15/1985		P & A Date			
Comment LIMITED ENTRY. PLUG PUSHED TO PBTD 12/8/04, FRAC'D INTO BY IEFFLER I21-6									
Directions To Well									
Congressional Location									
Quarter 3 NE		Quarter 4 SW	Section 21	Township 6	Twnshp N/S Dir N	Range 66		Range E/W Dir W	
Bottom Hole Location									
North-South Distance (ft) 1,980.0			From N or S Line FSL		East-West Distance (ft) 1,790.0		From E or W Line FWL		
Plug Back Total Depths									
Date		Depth (ftKB)	Method		Com				
1/18/1986		7,194.0	CASED HOLE LOG		CBL DEPTH LOGGER				
12/14/2004		7,154.0	TAG		CO TO 7194				
Wellbore Sections									
Section Des			Size (in)		Act Top, MD (ftKB)		Act Btm, MD (ftKB)		
SURFACE			12 1/4		11		302		
PRODUCTION			7 7/8		302		7,278		
Zone Statuses									
Zone Name		Status Date	Status	Fluid Type	Job	Prod Method			
CODELL		2/11/1986	PR	Gas	DRILLING/CO...	Flowing			
CODELL		12/20/2004	PR	Gas	RE-FRAC, 12/9...				
CODELL		6/25/2009	PR	Water					
NIOBRARA		2/11/1986	PR	Gas	DRILLING/CO...	Flowing			
NIOBRARA		5/18/2009	PR						
NIOBRARA		6/25/2009	PR	Water					
Casing Strings									
Surface, 302.0ftKB									
Casing Description Surface		Run Date 12/15/1985	OD (in) 9 5/8	Wt/Len (l...) 36.00	Grade	Top, MD (ft...) 11.0	MD (ftKB) 302.0		
Production, 7,264.0ftKB									
Casing Description Production		Run Date 12/22/1985	OD (in) 4 1/2	Wt/Len (l...) 11.60	Grade J-55	Top, MD (ft...) 11.0	MD (ftKB) 7,264.0		
Cement									
Description Surface Cement					Top Depth (ftKB) 11.0		Bottom Depth (ftKB) 302.0		
Description Production Cement					Top Depth (ftKB) 6,310.0		Bottom Depth (ftKB) 7,264.0		
Tubing Strings									
Tubing Description Tubing - Production		Run Date 12/14/2004	String... 2 3/8	ID (in) 2.00	Wt (lb/ft) 4.70	Grade J-55	Len (ft) 7,126.00	Set De... 	
Tubing Components									
Item Des		OD (in)	Wt (lb/ft)	Grade	Jts	Len (ft)	Btm (ftKB)	Btm (TVD) (ftKB)	
Tubing		2 3/8	4.70	J-55	216	7,124.40	7,135.4		
SN/NC		2 3/8	1.60			1.60	7,137.0		
Other In Hole									
Run Date		Des			OD (in)	Top (ftKB)	Btm (ftKB)		
Logs									
Date		Type				Top, MD (ftKB)		Btm, MD (ftKB)	
12/22/1985		COMPENSATED NEUTRON				4,300.0		7,275.0	
12/22/1985		CYBERLOOK				6,800.0		7,250.0	
12/22/1985		INDUCTION				302.0		7,272.0	
1/18/1986		CEMENT BOND				6,100.0		7,186.0	
3/23/2017		GYRO				0.0		7,050.0	
Perforation Data									
Linked Zone		Bnch/St g	Sum of Entered Shot Total	Top (ftKB)		Btm (ftKB)		Date	
NIOBRARA, ORIGINAL HOLE			6	6,977.00		6,987.00		1/18/1986	
CODELL, ORIGINAL HOLE			44	7,151.00		7,162.00		12/9/2004	

Well Name: HAROLD B01-21

VERTICAL - ORIGINAL HOLE, 4/12/2017 11:43:22 AM



Perforation Data					
Linked Zone	Bnch/St g	Sum of Entered Shot Total	Top (ftKB)	Btm (ftKB)	Date
CODELL, ORIGINAL HOLE		15	7,152.00	7,158.00	1/18/1986
Total (Sum)		65			
Stimulation Intervals					
Start Date 1/22/1986		Primary Job Type DRILLING/COMPLETION - ORIGINAL			
Technical Result		Tech Result Details		Tech Result Note	
Comment					
Start Date 12/10/2004		Primary Job Type RE-FRAC			
Technical Result		Tech Result Details		Tech Result Note	
Comment					